



Kawarau Falls Bridge Replacement Project

PROJECT UPDATE

SEPTEMBER 2016

The work site for the new two-lane Kawarau Falls Bridge has become a real hive of activity as construction moves up a gear, in the push to have the bridge open in the second of half of 2017.

The \$22 million project is being delivered by the NZ Transport Agency on behalf of the government, as part of its Accelerated Regional Road Package announced in 2014.

WORK PROGRESS

One of the most visible pieces of equipment on the construction site is the crane being used to help build the southern bridge piers, with work on these starting in the coming weeks.

On the north bank, another crane will assist the crew erecting the temporary trestle needed to build the new bridge foundations and superstructure.

Drilling operations for the main bridge piles is going well and to ensure it stays on track, drilling will continue over the next few Sundays.

Those living nearby may notice vibrations and an increase in noise and dust.

We apologise in advance for this and thank them for their patience while this work is completed.

Further tree removal is planned in the next few weeks along the true right of the riverbank. Stop/go traffic control will be in place. Every effort will be made to minimise disruptions for road users. Similar traffic management will be used during concrete placement for the new bridge piles over the next few weeks. This is necessary to ensure safety and the successful placement of the piles.



An aerial view of the construction platform needed to build the new bridge edges further out into the Kawarau River.

What will the new bridge deliver?

- » More predictable journey times for bridge users.
- » Eliminate often lengthy traffic delays at the current bridge during peak ski and summer holiday periods.
- » A stronger bridge built to withstand a once in every 2500-year earthquake.
- » Improved links to Queenstown International Airport, Frankton Flats and Queenstown.
- » Safer and more efficient movement of freight and people south of Queenstown to key destinations, including Milford Sound and Invercargill.

TRAFFIC WEB CAMS

A traffic web camera was recently installed on the north side of the existing single lane bridge; another has just been added at the BP roundabout in Frankton. The cameras provide images of traffic conditions at the sites that motorists can view online to make better informed decisions around their travel plans.

The Transport Agency's Wellington Traffic Operations Centre also use the web camera images to monitor traffic conditions, to adjust traffic light phasing to improve vehicle flows and help reduce delays. All four traffic web cameras in the Queenstown and Frankton areas can be viewed at www.nzta.govt.nz/otago-traffic.

TRAFFIC

We have also been working alongside the NZSki.com group to minimise delays on the one-lane Kawarau Falls Bridge during the afternoon peak traffic on busy ski days.

With the ski season in full swing, please allow extra time for your journey to the ski slopes. Real-time destination information can be found at: www.nzski.com/transport

WHAT TO LOOK OUT FOR IN AND AROUND THE CONSTRUCTION SITE

- » More trucks delivering materials and equipment needed to build the new bridge.
- » Stop/go traffic management will often be operating and may result in delays, so please plan for these.
- » The 50km/h speed restriction on SH6 through the construction site will ensure the safety of motorists and bridge construction workers.



Drilling work on the south river bank for the first river pier.

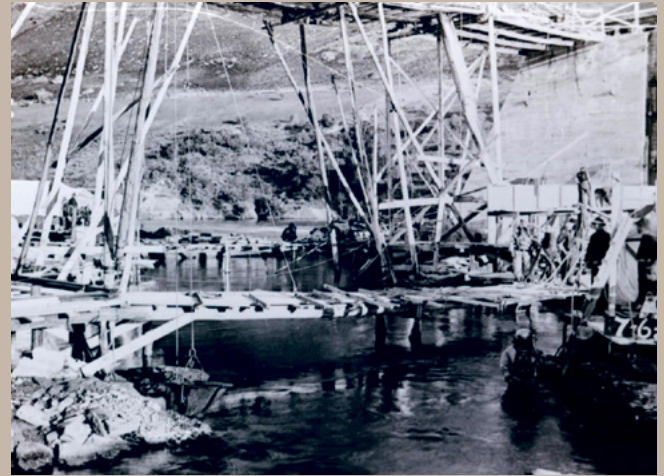
SAFETY INFORMATION

Throughout the construction of the new bridge, the public (including cyclists and pedestrians) can use the existing bridge. For safety reasons, access to the construction site is restricted to authorised site inducted people only. Anyone requiring access to the site must first visit the project office located at 1a Robertson Street, Frankton.

FROM THE ARCHIVES

Each newsletter, we will publish an historical picture of the original bridge build.

Workers inspect the new single bridge from a temporary structure.



A crane positions a driving plate on top of an abutment pile, in preparation for driving it into the schist bedrock.

PROJECT CONTACTS

McConnell Dowell
0508 KAWARAU (0508 529 2728) or
Phil Dowsett
NZ Transport Agency
Project Manager
phil.dowsett@nzta.govt.nz

Keep up with progress at:
www.nzta.govt.nz/kawarau-falls

NZ TRANSPORT AGENCY
WAKA KOTAHĪ