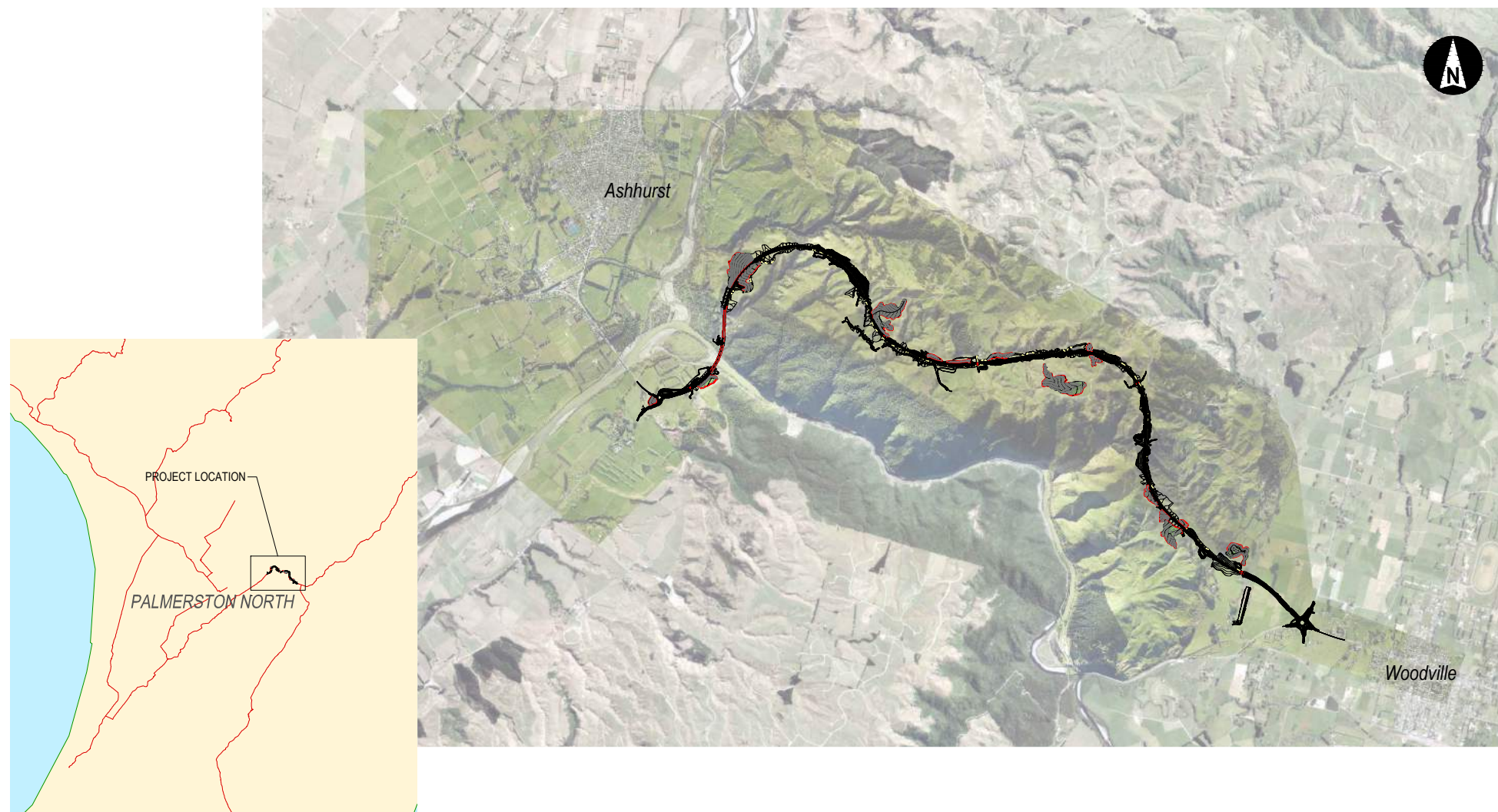


Te Ahu a Turanga Manawatū Tararua Highway

LOCALITY PLAN



CONSENT
 NOT FOR CONSTRUCTION

| SIZE | DATE | DRAWING No. | PROJECT No. | AREA | TYPE | DISC | NUMBER | REV |
|------|------------|-------------|-------------|------|------|------|--------|-----|
| A1 | 24/02/2020 | TAT | - | 3 | DG | R | 0001 | C |

T. WATTERSON 24/02/2020

DRAWING INDEX

DRG No. REV TITLE

GENERAL

| | | |
|-----------------|---|--------------------------------|
| TAT-3-DG-R-0001 | C | COVER SHEET & LOCALITY PLAN |
| TAT-3-DG-R-0002 | C | DRAWING INDEX |
| TAT-3-DG-R-0010 | A | ENABLING WORKS - OVERVIEW PLAN |

GEOMETRICS

| | | |
|-----------------|---|-------------------------------------|
| TAT-3-DG-R-0100 | C | GENERAL ARRANGEMENT - KEY PLAN |
| TAT-3-DG-R-0101 | C | GENERAL ARRANGEMENT PLAN - SHEET 1 |
| TAT-3-DG-R-0102 | C | GENERAL ARRANGEMENT PLAN - SHEET 2 |
| TAT-3-DG-R-0103 | C | GENERAL ARRANGEMENT PLAN - SHEET 3 |
| TAT-3-DG-R-0104 | C | GENERAL ARRANGEMENT PLAN - SHEET 4 |
| TAT-3-DG-R-0105 | C | GENERAL ARRANGEMENT PLAN - SHEET 5 |
| TAT-3-DG-R-0106 | C | GENERAL ARRANGEMENT PLAN - SHEET 6 |
| TAT-3-DG-R-0107 | C | GENERAL ARRANGEMENT PLAN - SHEET 7 |
| TAT-3-DG-R-0108 | C | GENERAL ARRANGEMENT PLAN - SHEET 8 |
| TAT-3-DG-R-0109 | C | GENERAL ARRANGEMENT PLAN - SHEET 9 |
| TAT-3-DG-R-0110 | C | GENERAL ARRANGEMENT PLAN - SHEET 10 |
| TAT-3-DG-R-0111 | C | GENERAL ARRANGEMENT PLAN - SHEET 11 |
| TAT-3-DG-R-0112 | C | GENERAL ARRANGEMENT PLAN - SHEET 12 |
| TAT-3-DG-R-0113 | C | GENERAL ARRANGEMENT PLAN - SHEET 13 |
| TAT-3-DG-R-0114 | C | GENERAL ARRANGEMENT PLAN - SHEET 14 |
| TAT-3-DG-R-0115 | C | GENERAL ARRANGEMENT PLAN - SHEET 15 |
| TAT-3-DG-R-0116 | C | GENERAL ARRANGEMENT PLAN - SHEET 16 |
| TAT-3-DG-R-0117 | C | GENERAL ARRANGEMENT PLAN - SHEET 17 |
| TAT-3-DG-R-0121 | C | GENERAL ARRANGEMENT PLAN - SHEET 21 |

| | | |
|-----------------|---|----------------------------------|
| TAT-3-DG-R-0201 | C | TYPICAL CROSS SECTIONS - SHEET 1 |
| TAT-3-DG-R-0202 | C | TYPICAL CROSS SECTIONS - SHEET 2 |
| TAT-3-DG-R-0203 | C | TYPICAL CROSS SECTIONS - SHEET 3 |
| TAT-3-DG-R-0204 | C | TYPICAL CROSS SECTIONS - SHEET 4 |
| TAT-3-DG-R-0205 | C | TYPICAL CROSS SECTIONS - SHEET 5 |
| TAT-3-DG-R-0206 | C | TYPICAL CROSS SECTIONS - SHEET 6 |

| | | |
|-----------------|---|--|
| TAT-3-DG-R-0501 | C | PLAN AND LONG SECTION - STATE HIGHWAY 3 (MC00) - SHEET 1 |
| TAT-3-DG-R-0502 | C | PLAN AND LONG SECTION - STATE HIGHWAY 3 (MC00) - SHEET 2 |
| TAT-3-DG-R-0503 | C | PLAN AND LONG SECTION - STATE HIGHWAY 3 (MC00) - SHEET 3 |
| TAT-3-DG-R-0504 | C | PLAN AND LONG SECTION - STATE HIGHWAY 3 (MC00) - SHEET 4 |
| TAT-3-DG-R-0505 | C | PLAN AND LONG SECTION - STATE HIGHWAY 3 (MC00) - SHEET 5 |
| TAT-3-DG-R-0506 | C | PLAN AND LONG SECTION - STATE HIGHWAY 3 (MC00) - SHEET 6 |
| TAT-3-DG-R-0507 | C | PLAN AND LONG SECTION - STATE HIGHWAY 3 (MC00) - SHEET 7 |
| TAT-3-DG-R-0508 | C | PLAN AND LONG SECTION - STATE HIGHWAY 3 (MC00) - SHEET 8 |
| TAT-3-DG-R-0509 | C | PLAN AND LONG SECTION - STATE HIGHWAY 3 (MC00) - SHEET 9 |

| | | |
|-----------------|---|--|
| TAT-3-DG-R-0530 | C | PLAN AND LONG SECTION - MERIDIAN ACCESS (MCW0) - SHEET 1 |
| TAT-3-DG-R-0531 | C | PLAN AND LONG SECTION - MERIDIAN ACCESS (MCW0) - SHEET 2 |
| TAT-3-DG-R-0532 | C | PLAN AND LONG SECTION - MERIDIAN ACCESS (MCW0) - SHEET 3 |
| TAT-3-DG-R-0533 | C | PLAN AND LONG SECTION - MERIDIAN UNDERPASS (MCX0) |
| TAT-3-DG-R-0534 | C | PLAN AND LONG SECTION - MERIDIAN ACCESS (MCY0) |
| TAT-3-DG-R-0535 | C | PLAN AND LONG SECTION - MERIDIAN ACCESS (MCY1) |
| TAT-3-DG-R-0536 | C | PLAN AND LONG SECTION - MERIDIAN ACCESS (MCY2) |
| TAT-3-DG-R-0537 | B | PLAN AND LONG SECTION - MERIDIAN ACCESS (MCY3) |
| TAT-3-DG-R-0538 | B | PLAN AND LONG SECTION - MERIDIAN ACCESS (MCW1 & MCW2) |
| TAT-3-DG-R-0539 | B | PLAN AND LONG SECTION - MERIDIAN ACCESS (MCX1) |
| TAT-3-DG-R-0540 | B | PLAN AND LONG SECTION - MERIDIAN ACCESS (MCX2) |

GEOTECHNICAL

| | | |
|-----------------|---|--------------------------------------|
| TAT-3-DG-G-1251 | C | EARTHWORKS TYPICAL DETAILS - SHEET 1 |
| TAT-3-DG-G-1252 | C | EARTHWORKS TYPICAL DETAILS - SHEET 2 |
| TAT-3-DG-G-1253 | C | EARTHWORKS TYPICAL DETAILS - SHEET 3 |
| TAT-3-DG-G-1254 | C | EARTHWORKS TYPICAL DETAILS - SHEET 4 |
| TAT-3-DG-G-1255 | C | EARTHWORKS TYPICAL DETAILS - SHEET 5 |
| TAT-3-DG-G-1256 | C | EARTHWORKS TYPICAL DETAILS - SHEET 6 |
| TAT-3-DG-G-1257 | C | EARTHWORKS TYPICAL DETAILS - SHEET 7 |

STORMWATER

| | | |
|-----------------|---|--|
| TAT-3-DG-H-1401 | C | STORMWATER DRAINAGE LAYOUT PLAN - SHEET 1 |
| TAT-3-DG-H-1402 | C | STORMWATER DRAINAGE LAYOUT PLAN - SHEET 2 |
| TAT-3-DG-H-1403 | C | STORMWATER DRAINAGE LAYOUT PLAN - SHEET 3 |
| TAT-3-DG-H-1404 | C | STORMWATER DRAINAGE LAYOUT PLAN - SHEET 4 |
| TAT-3-DG-H-1405 | C | STORMWATER DRAINAGE LAYOUT PLAN - SHEET 5 |
| TAT-3-DG-H-1406 | C | STORMWATER DRAINAGE LAYOUT PLAN - SHEET 6 |
| TAT-3-DG-H-1407 | C | STORMWATER DRAINAGE LAYOUT PLAN - SHEET 7 |
| TAT-3-DG-H-1408 | C | STORMWATER DRAINAGE LAYOUT PLAN - SHEET 8 |
| TAT-3-DG-H-1409 | C | STORMWATER DRAINAGE LAYOUT PLAN - SHEET 9 |
| TAT-3-DG-H-1410 | C | STORMWATER DRAINAGE LAYOUT PLAN - SHEET 10 |
| TAT-3-DG-H-1411 | C | STORMWATER DRAINAGE LAYOUT PLAN - SHEET 11 |
| TAT-3-DG-H-1412 | C | STORMWATER DRAINAGE LAYOUT PLAN - SHEET 12 |
| TAT-3-DG-H-1413 | C | STORMWATER DRAINAGE LAYOUT PLAN - SHEET 13 |
| TAT-3-DG-H-1414 | C | STORMWATER DRAINAGE LAYOUT PLAN - SHEET 14 |
| TAT-3-DG-H-1415 | C | STORMWATER DRAINAGE LAYOUT PLAN - SHEET 15 |
| TAT-3-DG-H-1416 | C | STORMWATER DRAINAGE LAYOUT PLAN - SHEET 16 |
| TAT-3-DG-H-1417 | C | STORMWATER DRAINAGE LAYOUT PLAN - SHEET 17 |
| TAT-3-DG-H-1421 | C | STORMWATER DRAINAGE LAYOUT PLAN - SHEET 21 |

| | | |
|-----------------|---|--|
| TAT-3-DG-H-1434 | A | STORMWATER MANAGEMENT DEVICES - CATCHMENT PLAN - SHEET 1 |
| TAT-3-DG-H-1435 | A | STORMWATER MANAGEMENT DEVICES - CATCHMENT PLAN - SHEET 2 |
| TAT-3-DG-H-1436 | A | STORMWATER MANAGEMENT DEVICES - CATCHMENT PLAN - SHEET 3 |
| TAT-3-DG-H-1437 | A | STORMWATER MANAGEMENT DEVICES - CATCHMENT PLAN - SHEET 4 |
| TAT-3-DG-H-1438 | A | STORMWATER MANAGEMENT DEVICES - CATCHMENT PLAN - SHEET 5 |
| TAT-3-DG-H-1439 | A | STORMWATER MANAGEMENT DEVICES - CATCHMENT PLAN - SHEET 6 |

| | | |
|-----------------|---|--|
| TAT-3-DG-H-1440 | C | CROSS CULVERTS - CATCHMENT OVERVIEW PLAN |
| TAT-3-DG-H-1441 | C | CROSS CULVERTS - SCHEDULE |

| | | |
|-----------------|---|---|
| TAT-3-DG-H-1450 | C | TYPICAL STORMWATER DRAINAGE DETAILS - NETWORK DRAINAGE, CHANNELS AND BASINS |
|-----------------|---|---|

| | | |
|-----------------|---|--|
| TAT-3-DG-H-1451 | C | TYPICAL STORMWATER DRAINAGE DETAILS - STREAM DIVERSIONS AND CUT-OFF DRAINS |
|-----------------|---|--|

| | | |
|-----------------|---|--|
| TAT-3-DG-H-1452 | C | TYPICAL STORMWATER DRAINAGE DETAILS - CROSS CULVERTS |
| TAT-3-DG-H-1453 | C | TYPICAL STORMWATER DRAINAGE DETAILS - WETLAND |

STRUCTURES

| | | |
|-----------------|---|--|
| TAT-3-DG-S-2100 | C | BRIDGE LOCATION PLAN |
| TAT-3-DG-S-2101 | C | UNDERPASS STRUCTURE (BR01, BR05 & BR06) - TYPICAL PLAN & SECTIONS |
| TAT-3-DG-S-2201 | C | BR02 - MANAWATŪ RIVER BRIDGE - PLAN & ELEVATION |
| TAT-3-DG-S-2301 | C | BR03 - ECO BRIDGE - PLAN & ELEVATION |
| TAT-3-DG-S-2701 | C | BR07 - MANGAMANIA STREAM CROSSING BRIDGE - PLAN |
| TAT-3-DG-S-2702 | C | BR07 - MANGAMANIA STREAM CROSSING BRIDGE - ELEVATION & TYPICAL CROSS SECTION |

TEMPORARY WORKS

| | | |
|-----------------|---|--------------------------------|
| TAT-3-DG-C-3601 | B | ACCOMMODATION WORKS - SHEET 1 |
| TAT-3-DG-C-3602 | B | ACCOMMODATION WORKS - SHEET 2 |
| TAT-3-DG-C-3603 | B | ACCOMMODATION WORKS - SHEET 3 |
| TAT-3-DG-C-3604 | B | ACCOMMODATION WORKS - SHEET 4 |
| TAT-3-DG-C-3605 | B | ACCOMMODATION WORKS - SHEET 5 |
| TAT-3-DG-C-3606 | B | ACCOMMODATION WORKS - SHEET 6 |
| TAT-3-DG-C-3607 | B | ACCOMMODATION WORKS - SHEET 7 |
| TAT-3-DG-C-3608 | B | ACCOMMODATION WORKS - SHEET 8 |
| TAT-3-DG-C-3609 | B | ACCOMMODATION WORKS - SHEET 9 |
| TAT-3-DG-C-3610 | B | ACCOMMODATION WORKS - SHEET 10 |
| TAT-3-DG-C-3611 | B | ACCOMMODATION WORKS - SHEET 11 |
| TAT-3-DG-C-3612 | B | ACCOMMODATION WORKS - SHEET 12 |
| TAT-3-DG-C-3613 | B | ACCOMMODATION WORKS - SHEET 13 |
| TAT-3-DG-C-3614 | B | ACCOMMODATION WORKS - SHEET 14 |
| TAT-3-DG-C-3615 | B | ACCOMMODATION WORKS - SHEET 15 |
| TAT-3-DG-C-3616 | B | ACCOMMODATION WORKS - SHEET 16 |

SPOIL SITES

| | | |
|-----------------|---|-------------------------------------|
| TAT-3-DG-C-3640 | A | SPOIL SITES - KEY PLAN |
| TAT-3-DG-C-3641 | A | SPOIL SITES - SHEET 1 |
| TAT-3-DG-C-3642 | A | SPOIL SITES - SHEET 2 |
| TAT-3-DG-C-3643 | A | SPOIL SITES - SHEET 3 |
| TAT-3-DG-C-3644 | A | SPOIL SITES - SHEET 4 |
| TAT-3-DG-C-3645 | A | SPOIL SITES - SHEET 5 |
| TAT-3-DG-C-3650 | A | SPOIL SITES - TYPICAL CROSS SECTION |

EROSION AND SEDIMENT CONTROL

| | | |
|-----------------|---|--|
| TAT-3-DG-E-3801 | A | CONCEPT EROSION AND SEDIMENT CONTROL - BULK EARTHWORKS (MAIN ALIGNMENT) - SHEET 1 |
| TAT-3-DG-E-3802 | A | CONCEPT EROSION AND SEDIMENT CONTROL - BULK EARTHWORKS (MAIN ALIGNMENT) - SHEET 2 |
| TAT-3-DG-E-3803 | A | CONCEPT EROSION AND SEDIMENT CONTROL - BULK EARTHWORKS (MAIN ALIGNMENT) - SHEET 3 |
| TAT-3-DG-E-3804 | A | CONCEPT EROSION AND SEDIMENT CONTROL - BULK EARTHWORKS (MAIN ALIGNMENT) - SHEET 4 |
| TAT-3-DG-E-3805 | A | CONCEPT EROSION AND SEDIMENT CONTROL - BULK EARTHWORKS (MAIN ALIGNMENT) - SHEET 5 |
| TAT-3-DG-E-3806 | A | CONCEPT EROSION AND SEDIMENT CONTROL - BULK EARTHWORKS (MAIN ALIGNMENT) - SHEET 6 |
| TAT-3-DG-E-3807 | A | CONCEPT EROSION AND SEDIMENT CONTROL - BULK EARTHWORKS (MAIN ALIGNMENT) - SHEET 7 |
| TAT-3-DG-E-3808 | A | CONCEPT EROSION AND SEDIMENT CONTROL - BULK EARTHWORKS (MAIN ALIGNMENT) - SHEET 8 |
| TAT-3-DG-E-3809 | A | CONCEPT EROSION AND SEDIMENT CONTROL - BULK EARTHWORKS (MAIN ALIGNMENT) - SHEET 9 |
| TAT-3-DG-E-3810 | A | CONCEPT EROSION AND SEDIMENT CONTROL - BULK EARTHWORKS (MAIN ALIGNMENT) - SHEET 10 |
| TAT-3-DG-E-3811 | A | CONCEPT EROSION AND SEDIMENT CONTROL - BULK EARTHWORKS (MAIN ALIGNMENT) - SHEET 11 |
| TAT-3-DG-E-3812 | A | CONCEPT EROSION AND SEDIMENT CONTROL - BULK EARTHWORKS (MAIN ALIGNMENT) - SHEET 12 |
| TAT-3-DG-E-3813 | A | CONCEPT EROSION AND SEDIMENT CONTROL - BULK EARTHWORKS (MAIN ALIGNMENT) - SHEET 13 |
| TAT-3-DG-E-3814 | A | CONCEPT EROSION AND SEDIMENT CONTROL - BULK EARTHWORKS (MAIN ALIGNMENT) - SHEET 14 |
| TAT-3-DG-E-3815 | A | CONCEPT EROSION AND SEDIMENT CONTROL - BULK EARTHWORKS (MAIN ALIGNMENT) - SHEET 15 |
| TAT-3-DG-E-3816 | A | CONCEPT EROSION AND SEDIMENT CONTROL - BULK EARTHWORKS (MAIN ALIGNMENT) - SHEET 16 |
| TAT-3-DG-E-3817 | A | CONCEPT EROSION AND SEDIMENT CONTROL - BULK EARTHWORKS (MAIN ALIGNMENT) - SHEET 17 |
| TAT-3-DG-E-3821 | A | CONCEPT EROSION AND SEDIMENT CONTROL - BULK EARTHWORKS (MAIN ALIGNMENT) - SHEET 21 |
| TAT-3-DG-E-3831 | A | SITE SPECIFIC EROSION AND SEDIMENT CONTROL - ECO BRIDGE |
| TAT-3-DG-E-3832 | A | SITE SPECIFIC EROSION AND SEDIMENT CONTROL - CULVERT 8 (CH 7850) |
| TAT-3-DG-E-3833 | A | SITE SPECIFIC EROSION AND SEDIMENT CONTROL - CH 12100 - 12900 - SHEET 1 |
| TAT-3-DG-E-3834 | A | SITE SPECIFIC EROSION AND SEDIMENT CONTROL - CH 12100 - 12900 - SHEET 2 |
| TAT-3-DG-E-3835 | A | SITE SPECIFIC EROSION AND SEDIMENT CONTROL - CH 12100 - 12900 - SHEET 3 |

ECOLOGY

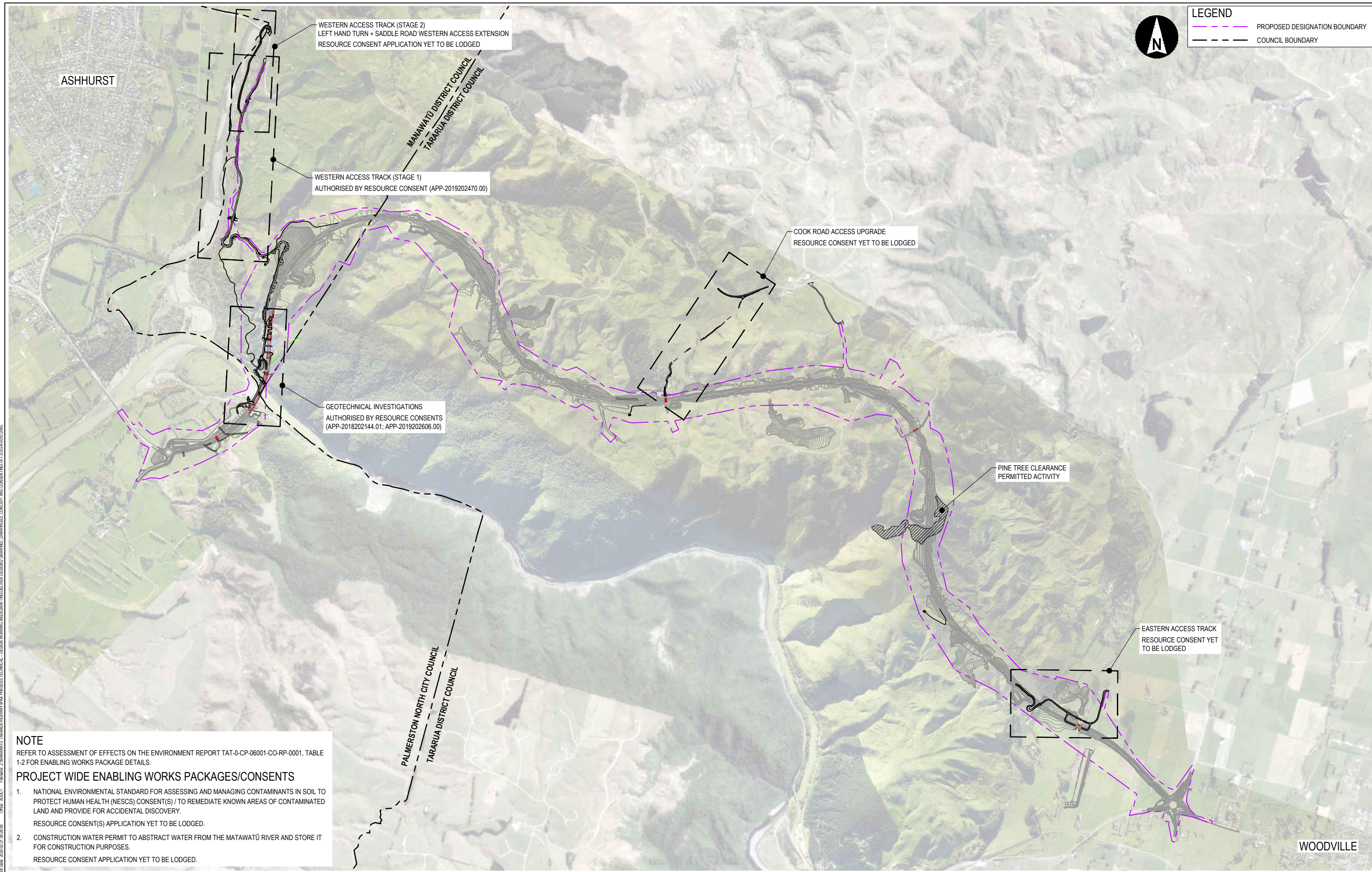
| | | |
|-----------------|---|--|
| TAT-3-DG-E-4100 | A | WATERWAYS AND CATCHMENTS - OVERVIEW PLAN |
| TAT-3-DG-E-4131 | A | TERRESTRIAL ECOSYSTEMS PLAN - SHEET 1 |
| TAT-3-DG-E-4132 | A | TERRESTRIAL ECOSYSTEMS PLAN - SHEET 2 |
| TAT-3-DG-E-4133 | A | TERRESTRIAL ECOSYSTEMS PLAN - SHEET 3 |
| TAT-3-DG-E-4134 | A | TERRESTRIAL ECOSYSTEMS PLAN - SHEET 4 |
| TAT-3-DG-E-4135 | A | TERRESTRIAL ECOSYSTEMS PLAN - SHEET 5 |
| TAT-3-DG-E-4136 | A | TERRESTRIAL ECOSYSTEMS PLAN - SHEET 6 |
| TAT-3-DG-E-4137 | A | TERRESTRIAL ECOSYSTEMS PLAN - SHEET 7 |
| TAT-3-DG-E-4141 | A | FRESHWATER ECOSYSTEMS PLAN - SHEET 1 |
| TAT-3-DG-E-4142 | A | FRESHWATER ECOSYSTEMS PLAN - SHEET 2 |
| TAT-3-DG-E-4143 | A | FRESHWATER ECOSYSTEMS PLAN - SHEET 3 |
| TAT-3-DG-E-4144 | A | FRESHWATER ECOSYSTEMS PLAN - SHEET 4 |
| TAT-3-DG-E-4145 | A | FRESHWATER ECOSYSTEMS PLAN - SHEET 5 |
| TAT-3-DG-E-4146 | A | FRESHWATER ECOSYSTEMS PLAN - SHEET 6 |
| TAT-3-DG-E-4147 | A | FRESHWATER ECOSYSTEMS PLAN - SHEET 7 |
| TAT-3-DG-E-4150 | A | PROPOSED ECOLOGICAL OFFSET / COMPENSATION - OVERVIEW PLAN |
| TAT-3-DG-E-4151 | A | PROPOSED ECOLOGICAL OFFSET / COMPENSATION PLAN - SHEET 1 |
| TAT-3-DG-E-4152 | A | PROPOSED ECOLOGICAL OFFSET / COMPENSATION PLAN - SHEET 2 |
| TAT-3-DG-E-4153 | A | PROPOSED ECOLOGICAL OFFSET / COMPENSATION PLAN - SHEET 3 |
| TAT-3-DG-E-4154 | A | PROPOSED ECOLOGICAL OFFSET / COMPENSATION PLAN - SHEET 4 |
| TAT-3-DG-E-4155 | A | PROPOSED ECOLOGICAL OFFSET / COMPENSATION PLAN - SHEET 5 |
| TAT-3-DG-E-4156 | A | PROPOSED ECOLOGICAL OFFSET / COMPENSATION PLAN - SHEET 6 |
| TAT-3-DG-E-4157 | A | PROPOSED ECOLOGICAL OFFSET / COMPENSATION PLAN - SHEET 7 |
| TAT-3-DG-E-4161 | A | PROPOSED ECOLOGICAL OFFSET / COMPENSATION PLAN - SITE 1: SPROULL FARM |
| TAT-3-DG-E-4162 | A | PROPOSED ECOLOGICAL OFFSET / COMPENSATION PLAN - SITE 2: RATAHIWI FARM |

ORIGINAL DRAWING SIZE A1
DRAWING SCALE DOUBLES WHEN
PRINTING AT A3 (1:1000 BECOMES 1:2000)

P:\01 - 2024\03 15:51:48 - Client - AUDI - E:\waka - ZANANAWATU TARARUA HIGHWAY PHASE 3\TECHNICAL - DESIGN WORKING\REGULATING\DESIGN DRAWING - DRAWINGS\CONCEPT AND CONSENTING\TA13\04\02\002.DWG



| | | | | | | | | | | | | | | | | | |
|--------|--|-----|--|------------|-------------------------------|---------------|---------------|------|----------------------|--|-------------|--|-------|------|------|--------|-----|
| CLIENT | | REV | | DATE | REVISION DETAILS | APPROVED | SCALE | SIZE | CONSENT | | PROJECT | TE AHU A TURANGA: MANAWATŪ TARARUA HIGHWAY | | | | | |
| | | C | | 24/02/2020 | ISSUED FOR REGIONAL CONSENT | D. MCGAHAN | NOT TO SCALE | A1 | NOT FOR CONSTRUCTION | | | | | | | | |
| | | B | | 19/11/2019 | ISSUED FOR CONCEPT DESIGN | D. MACKINTOSH | DRAWN | | APPROVED | | TITLE | DRAWING INDEX | | | | | |
| | | A | | 18/10/2019 | CONCEPT DESIGN - DRAFT REVIEW | D. MACKINTOSH | C. LANE | | | | | | | | | | |
| | | | | | | | DESIGNED | | DATE | | DRAWING No. | PROJECT No. | PHASE | TYPE | DISC | NUMBER | REV |
| | | | | | | | - | | 24/02/2020 | | | | | | | | |
| | | | | | | | REVIEWED | | T. WATTERSON | | | | | | | | |
| | | | | | | | D. MACKINTOSH | | T. WATTERSON | | | | | | | | |



| LEGEND | |
|--------|-------------------------------|
| | PROPOSED DESIGNATION BOUNDARY |
| | COUNCIL BOUNDARY |

NOTE
 REFER TO ASSESSMENT OF EFFECTS ON THE ENVIRONMENT REPORT TAT-0-CP-06001-CO-RP-0001, TABLE 1-2 FOR ENABLING WORKS PACKAGE DETAILS.

PROJECT WIDE ENABLING WORKS PACKAGES/CONSENTS

- NATIONAL ENVIRONMENTAL STANDARD FOR ASSESSING AND MANAGING CONTAMINANTS IN SOIL TO PROTECT HUMAN HEALTH (NESCS) CONSENT(S) / TO REMEDIATE KNOWN AREAS OF CONTAMINATED LAND AND PROVIDE FOR ACCIDENTAL DISCOVERY.
 RESOURCE CONSENT(S) APPLICATION YET TO BE LODGED.
- CONSTRUCTION WATER PERMIT TO ABSTRACT WATER FROM THE MATAWATŪ RIVER AND STORE IT FOR CONSTRUCTION PURPOSES.
 RESOURCE CONSENT APPLICATION YET TO BE LODGED.

File Name: Z:\MANAWATU TARARUA HIGHWAY\PAK PHASE\03\TECHNICAL - DESIGN WORKING\RESURFACING\DESIGN DRAWING - DRAWINGS\CONCEPT AND CONSENTING\TAT-13-04-010.DWG
 Date: 2020/02/24 09:28:39
 User: AUDI

| | | | | | | | | | |
|---------------|-------------|-------|------------|-----------------------------|------------|--------------|------|----------------------|--|
| CLIENT | | REV | DATE | REVISION DETAILS | APPROVED | SCALE | SIZE | CONSENT | PROJECT |
| | | A | 24/02/2020 | ISSUED FOR REGIONAL CONSENT | D. MCGAHAN | NOT TO SCALE | A1 | NOT FOR CONSTRUCTION | TE AHU A TURANGA: MANAWATŪ TARARUA HIGHWAY |
| DRAWN | | | | | | | | APPROVED | TITLE |
| L. STEINER | | | | | | | | DATE | ENABLING WORKS - OVERVIEW PLAN |
| DESIGNED | | | | | | | | T. WATTERSON | |
| H. ATKINS | | | | | | | | | |
| REVIEWED | | | | | | | | | |
| D. MACKINTOSH | | | | | | | | | |
| DRAWING No. | PROJECT No. | PHASE | TYPE | DISC | NUMBER | REV | | | |
| TAT | | 3 | DG | R | 0010 | A | | | |

