

Potential safety solutions

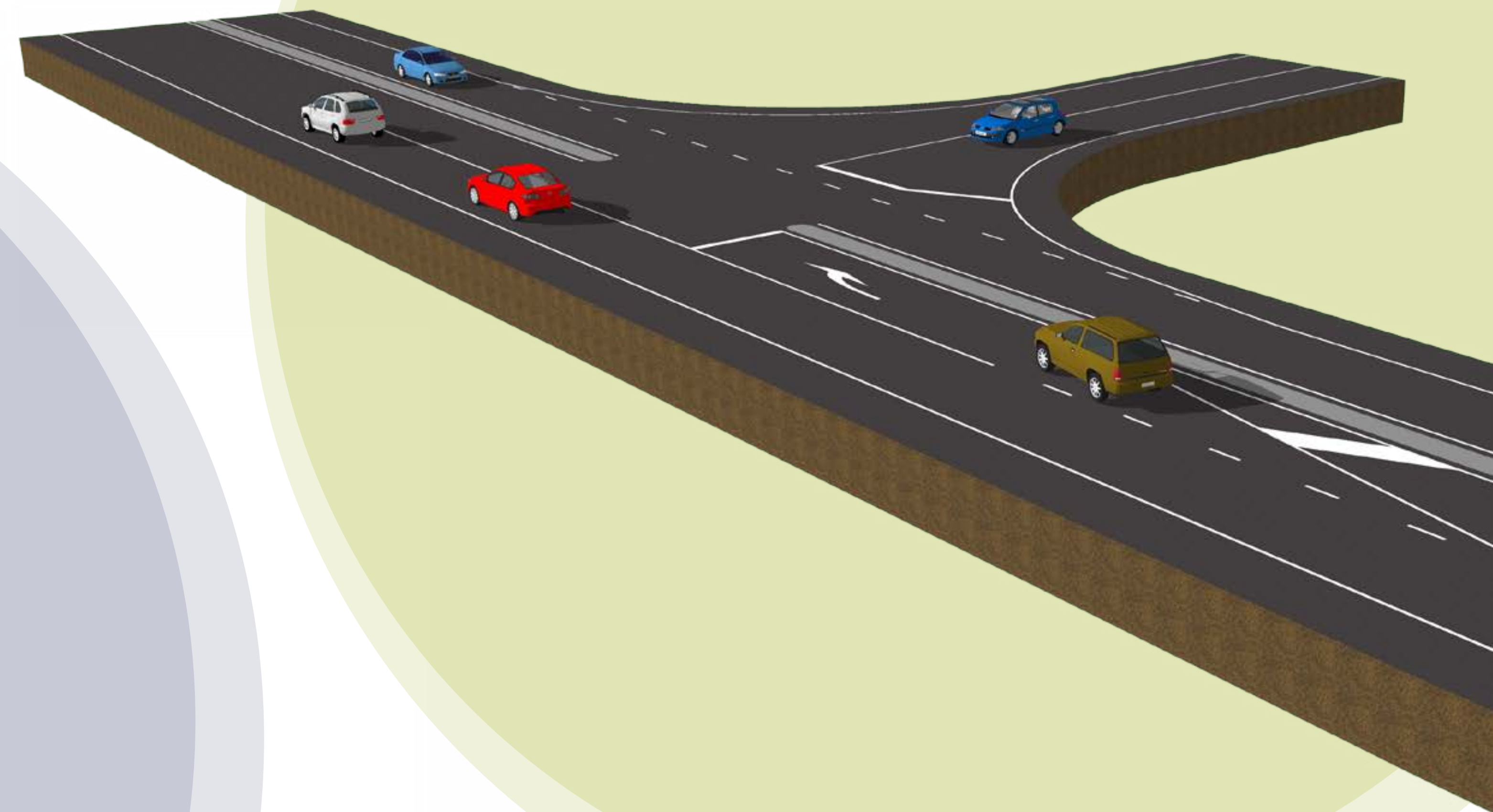
Wide centrelines or flush medians

- Increase the separation between opposing traffic.
- Provide turning drivers with a safe place to wait.
- Steer drivers away from each other.



Right turn bays

- Provide drivers who are turning right with a safe place to wait.



Flexible road safety barriers

- Are installed down the middle of a road (median barriers) to prevent head-on collisions or along the edge of the road (side barriers) to stop run-off-road crashes.
- Catch drivers who leave their lane before hitting something harder like trees, poles, ditches or other vehicles.



Shoulder widening

- A wider sealed shoulder provides space for pedestrians, cyclists as well as recovery room for drivers who lose control or need to take evasive action.



Visualisations are indicative only