

SH20A to Airport

FACT SHEET

2015



The SH20A to Airport project includes the following improvements:

- Upgrading SH20A to motorway standard (currently expressway standard)
- Providing for future bus shoulder lanes
- Constructing a trench to separate motorway and local traffic at the SH20A/Kirkbride Road intersection
- Improving landscaping and lighting
- Protecting the environment through enhanced stormwater treatment and drainage
- Constructing a new, fully segregated, shared path adjacent to the motorway
- Signalising Richard Pearse Drive/ Ascot Road and Westney Road/ Kirkbride Road/Jordan Road intersections
- Integrating with future rail to and from the airport

THE PROJECT

As part of the Accelerate Auckland Project, The NZ Transport Agency has secured additional Government funding to upgrade State Highway 20A.

The state highway will be upgraded to a motorway with a new interchange constructed at the Kirkbride Road intersection. Construction commenced in January and the project is expected to take 2.5 years to complete.

SH20A is the primary route to Auckland Airport and forms a strategic link between the Western Ring Route (SH20 and SH16), the airport and the greater Auckland area. SH20A is also a crucial connection to the regional ports and industrial areas and plays a significant role in connecting Auckland and a growing New Zealand.

The signalised intersection at SH20A/ Kirkbride Road is heavily congested during peak travel periods, creating significant delays to traffic travelling to and from the airport. Projected population growth in Auckland and increasing volumes of air passengers will place additional pressure on SH20A in the future.

The NZ Transport Agency's upgrade of SH20A will provide a safer, more reliable route to and from the airport and will increase freight efficiency through South Auckland.

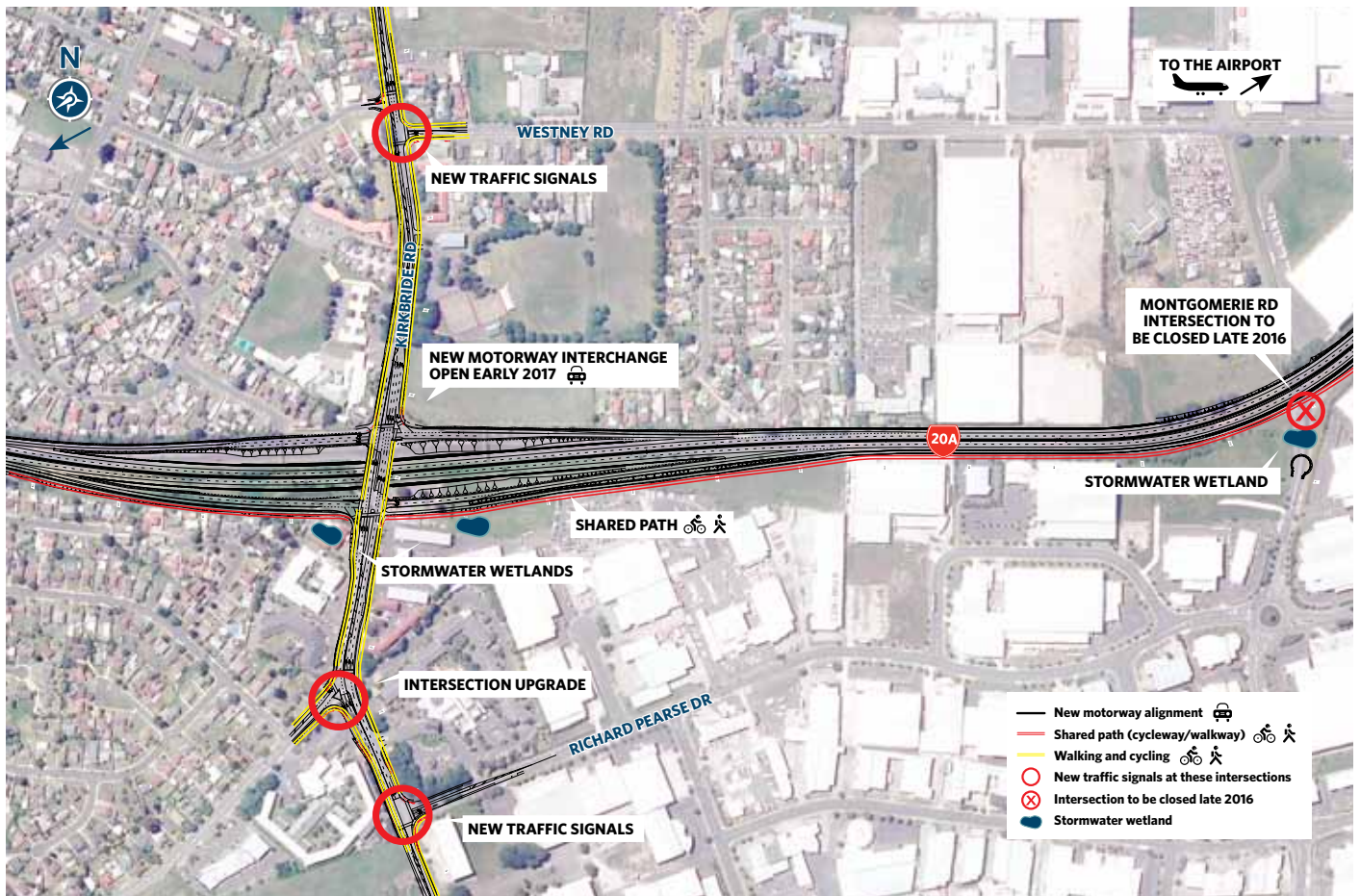
BENEFITS

Upgrading SH20A will improve journey reliability for traffic to and from Auckland Airport. Safety for all road users will be improved by separating motorway traffic from local traffic at the SH20A/Kirkbride Road intersection.

Relocating cyclists from the existing state highway onto a new shared path alongside the upgraded corridor will improve safety for cyclists to and from the airport. Local cycling and pedestrian connections will also be improved with shared paths across SH20A at Kirkbride Road.

The upgraded corridor with new Kirkbride Road interchange will support future population and business growth in the area, cater for increasing numbers of travellers, and improve freight efficiency in South Auckland.

For the local community, the design of the Kirkbride Road bridge will reconnect the community currently severed by the state highway. Lighting will improve safety at the intersection and over 750 metres of noise wall will provide benefits of reduced road noise to residents adjacent to the motorway.



Key facts

- Project length 3km
- Construction cost of \$146 million
- Includes constructing a 580metre long trench for SH20A traffic to travel under Kirkbride Road
- Integrates with Watercare's Hunua 4 watermain at Kirkbride Road
- Includes 2km of shared path alongside SH20A
- Trench design is future proofed to integrate with future rail to the airport
- Opening early 2017

ACCELERATE AUCKLAND PROJECT

Auckland's population is growing exponentially, and an ever-increasing Auckland creates ever-increasing demands on its transport networks. To meet these demands and to manage Auckland's transport system the NZ Transport Agency needs a strategic response that makes the best use of its existing infrastructure and identifies new infrastructure solutions to make it better.

In May 2014, the government announced \$375m in additional funding to enable the Transport Agency to deliver four projects early. These projects will provide a number of benefits which include significant improvements to Auckland's motorway network north and south of

the Harbour Bridge, a safer and more reliable journey to and from the airport through SH20A as well as better access and connections to Auckland's east and west. Accelerating all these projects will help ensure that key routes in Auckland - that provide the backbone to national economic growth and productivity - will provide better links and improved journeys for both commercial and private use.

if English is not your first language we can organise a translation of this information for you. Please contact us if you would like this service.



Stay in touch: 0508 6982 742
 Email: sh20a@nzta.govt.nz
www.nzta.govt.nz/projects/sh20a-to-airport