

Construction underway on SH20A

SH20A TO AIRPORT PROJECT UPDATE

MARCH 2015



What are the Improvements?

The SH20A to Airport project includes the following:

- Upgrading SH20A from an expressway to a motorway
- Building a motorway interchange at Kirkbride Road, with motorway traffic travelling under the local road for a distance of about 580 metres
- A widened trench design to allow for a future rail link to the airport
- A fully segregated shared path alongside SH20A between the Landing Drive roundabout and Kirkbride Road
- An upgrade of the Kirkbride Road/Ascot Road intersection to include two left turn lanes from Kirkbride Road
- Traffic signals at the Richard Pearse Drive/Ascot Road and Kirkbride Road/ Westney Road/ Jordan Road intersection
- Improved lighting, landscape and stormwater provision along the corridor
- Integration with Watercare's Hunua 4 water main as it crosses over SH20A
- Closure of the Montgomerie Road/SH20A intersection once interchange is complete

The official start of construction was marked in February with an iwi led dawn blessing followed by a Ministerial event to turn the first piece of earth.

The SH20A to Airport project will provide for better journey reliability for all road users, as well as improved safety with the separation of motorway traffic and local traffic at the Kirkbride intersection.

It will also enable the Transport Agency to fully realise the benefits of the development of the Western Ring Route, taking travellers to and from the airport along SH20A, SH20 through the Waterview Connection, SH16 and SH18, when the Waterview tunnels open in 2017.

NZ Transport Agency's Regional Director Ernst Zollner, Transport Minister Simon Bridges, and Mayor Len Brown turn the first sod for the project.



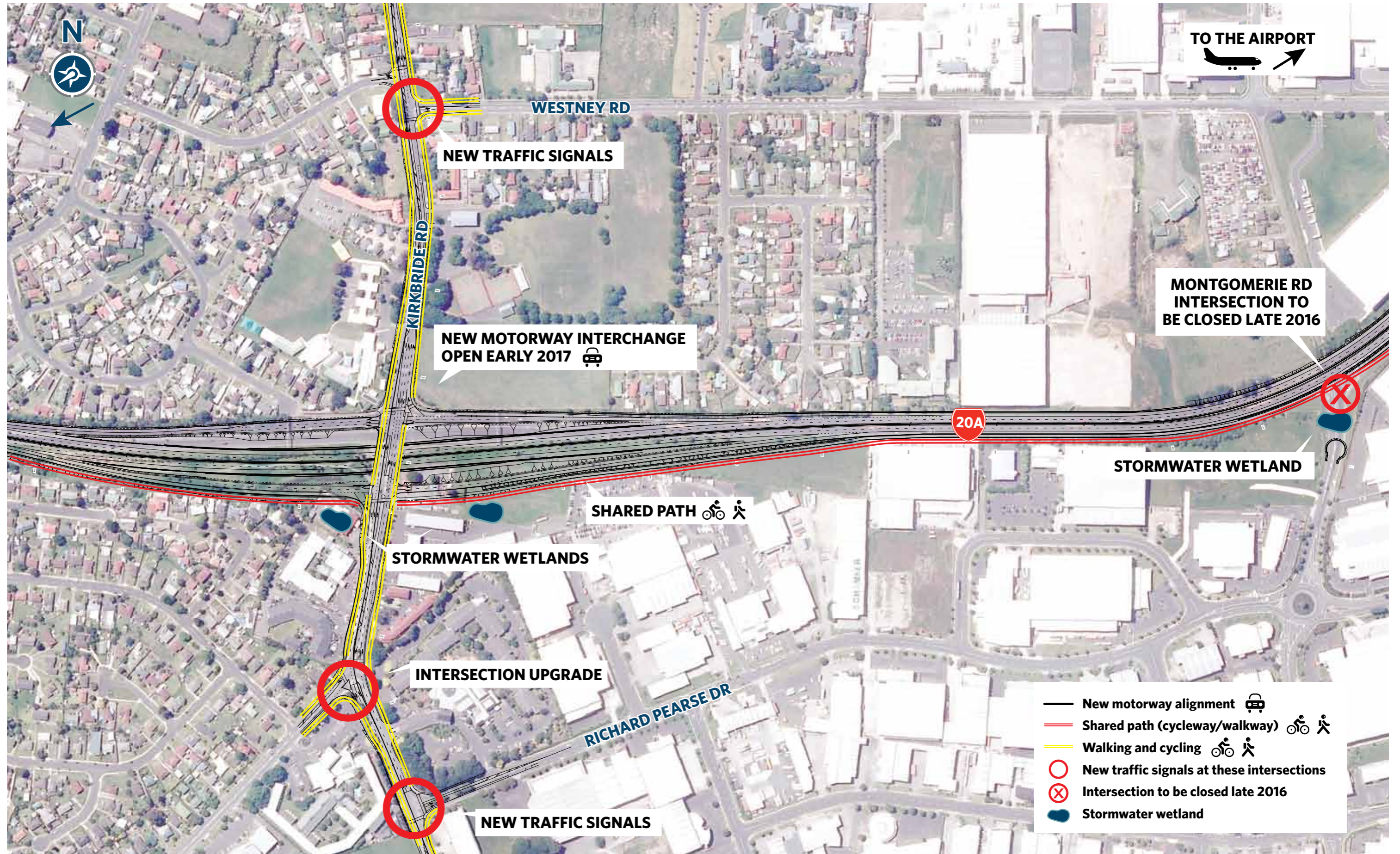
TRENCH DESIGNED FOR FUTURE RAIL

As part of the SH20A to Airport project, the Transport Agency has been working closely with Auckland Transport to future proof a rail connection to the airport. The initial trench design for the motorway interchange at Kirkbride Road has been widened to accommodate future rail, with this future proofing adding an estimated \$30 million to the project costs.

While the provision of either heavy or light rail is still being investigated by Auckland Transport, it makes sense that the design of the new Kirkbride Interchange does not preclude either option.

Auckland Transport's focus is about ensuring the rail mode is protected irrespective of the final choice of rail type and funding yet to be determined.

SH20A to Airport - planned improvements



Neighbourhood BBQs

From April this year there will be up to 200 workers on site at Kirkbride Road. To help us get to know the community we'd like to introduce ourselves over a friendly sausage sizzle.



A number of on-street barbeques will be set up between 4.30-6.00pm on weeknights in March and April for our neighbours and communities alongside SH20A. Look out for an invitation in your letterbox and come down and enjoy a free sausage and a friendly chat with the project team.

Allow five

If you are heading to or from the airport via SH20A we encourage you to add another five minutes to your journey. Earthworks will commence in June and there will be diversions for local road traffic for up to 18 months.

While the two current lanes of SH20A traffic in each direction will be maintained throughout construction, there will be a lower speed limit through the construction area and restrictions on some turning movements at Kirkbride Road.

If you're dropping off rental cars, or accessing accommodation providers in the Airport Oaks area, we recommend you add additional travel time and plan your route in advance to avoid potential delays.



Traffic signals

As part of the SH20A to Airport project we are planning to install traffic signals at the Richard Pearce Drive/Ascot Road and Kirkbride Road/Westney Road/Jordan Road intersections.

Installing traffic signals will assist in keeping traffic moving through the planned detour routes that will be in place later this year.

Dependent on consultation and obtaining all necessary approvals, traffic signals are planned to be installed and operational by June this year.

As part of the consultation, the Transport Agency would like to know how the proposed traffic signals may affect you, including any changes to how you access employment, schools and community facilities. To have your say on the proposed traffic signals you can call the Freephone number: 0508 6982 742, or email: sh20a@nzta.govt.nz

For more information on the SH20A to Airport project, or to be added to the Stay in Touch project database, please contact Kelli Sullivan, Stakeholder Manager for the MHX Kirkbride Alliance.

Freephone: 0508 6982 742

Email: sh20a@nzta.govt.nz

Website: www.nzta.govt.nz/sh20atoairport

