

CONSTRUCTION UPDATE

MAY 2018

It has been a busy year for the SH16 Lincoln to Westgate Project and we thank residents for their patience during our ongoing works. The old bridges crossing over the highway have been demolished and new bridge spans built.

We are now at the point where we need to join or 'stitch' the new bridge spans together with steel reinforced concrete. We will do this over two weekends in May starting with Huruhuru Bridge.

When completed, the bridges will have improved shared paths for cyclists and pedestrians, increased height clearance from the motorway and wider lanes for traffic.

BRIDGE CLOSURES

Huruhuru Road Bridge will be closed to vehicles from 7pm Saturday 5 May to 8am Sunday 6 May while we 'stitch' the two sides of the bridge together.

The works are being done at night so that fewer drivers are affected.

We use concrete to stitch the two new bridge sections together and strengthen it. The steel reinforced concrete needs 12 hours to cure or set. The vibration from passing traffic would affect the quality of the cure and because of this we will close the bridge to vehicle traffic. You will still be able to walk over the bridge.

If you are a resident directly affected by the closure and you think you will need to use your car during these works, please consider parking your car on local roads on the other side of the bridge.

Please contact us on 022 687 0391 if you have special needs and we will provide assistance. Emergency services are the only vehicles that will be permitted to travel over the bridge during the closure.

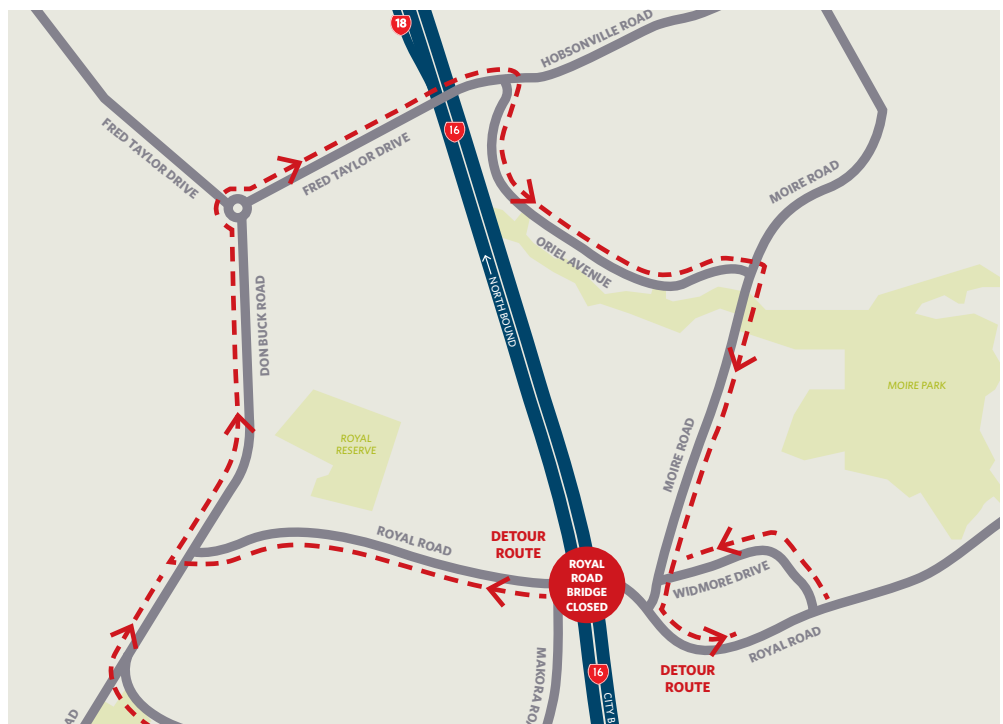
The motorway will also be closed in both directions from 8pm Saturday to 8am Sunday during these works.

Royal Road Bridge will be closed to vehicles from 7pm Saturday 9 June to 8am Sunday 10 June.

To strengthen Royal Road Bridge we will 'stitch' the sides of the new bridge sections together using concrete.

The reason for closing the bridge to vehicles is because the steel reinforced concrete takes 12 hours to cure, or set and vibration from passing traffic would weaken the strength of the concrete stitch. You will still be able to walk across the bridge. Detours will be in place during the closure - see map.

The motorway will also be closed in both directions from 8pm Saturday to 8am Sunday during these works.



ROYAL ROAD SCHOOL PRESENTATION

A member of the project team recently visited Royal Road School to talk about the demolition of the old bridges on Royal Road and Huruhuru Road.

The children were fascinated and the team enjoyed the opportunity to talk about the work it was doing on behalf of the NZ Transport Agency.

If you would like members of the team to present to your group on the Lincoln to Westgate Project please contact Sheila Herrick. Her contact details are at the bottom of the page.



MEET ONE OF THE TEAM

Emerito Fabian



What is your role on the project?

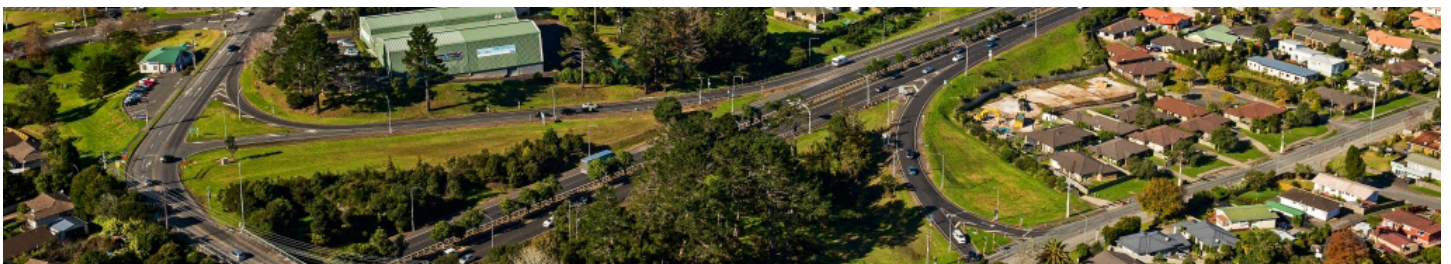
I am the Senior Quantity Surveyor for this project. I am responsible for the commercial and contract administration of the project. Part of my role is to work with suppliers and subcontractors. I visit the site often and my busiest time is toward the end of the month.

How did you come to be in this role?

I have a Bachelor's Degree in Civil Engineering from the Philippines and have worked as a Project Engineer for several years. In 2001 while in the Middle East, I was given the choice to work as a Project Engineer on site or as a Quantity Surveyor based in the office. With temperatures hovering at around 50 degrees celsius at the height of summer, I chose to be a Quantity Surveyor.

What do you do in your spare time?

I enjoy doing community work and coaching basketball. At the moment I coach between 60-70 children aged between 8 and 17. It keeps me busy.



PROJECT CONTACTS

Please contact Sheila Herrick at sheila.herrick@downer.co.nz or 022 687 0391. Keep up with progress at: www.nzta.govt.nz/projects/the-western-ring-route/sh16-lincoln-to-westgate/