

Royal Road Bridge closure

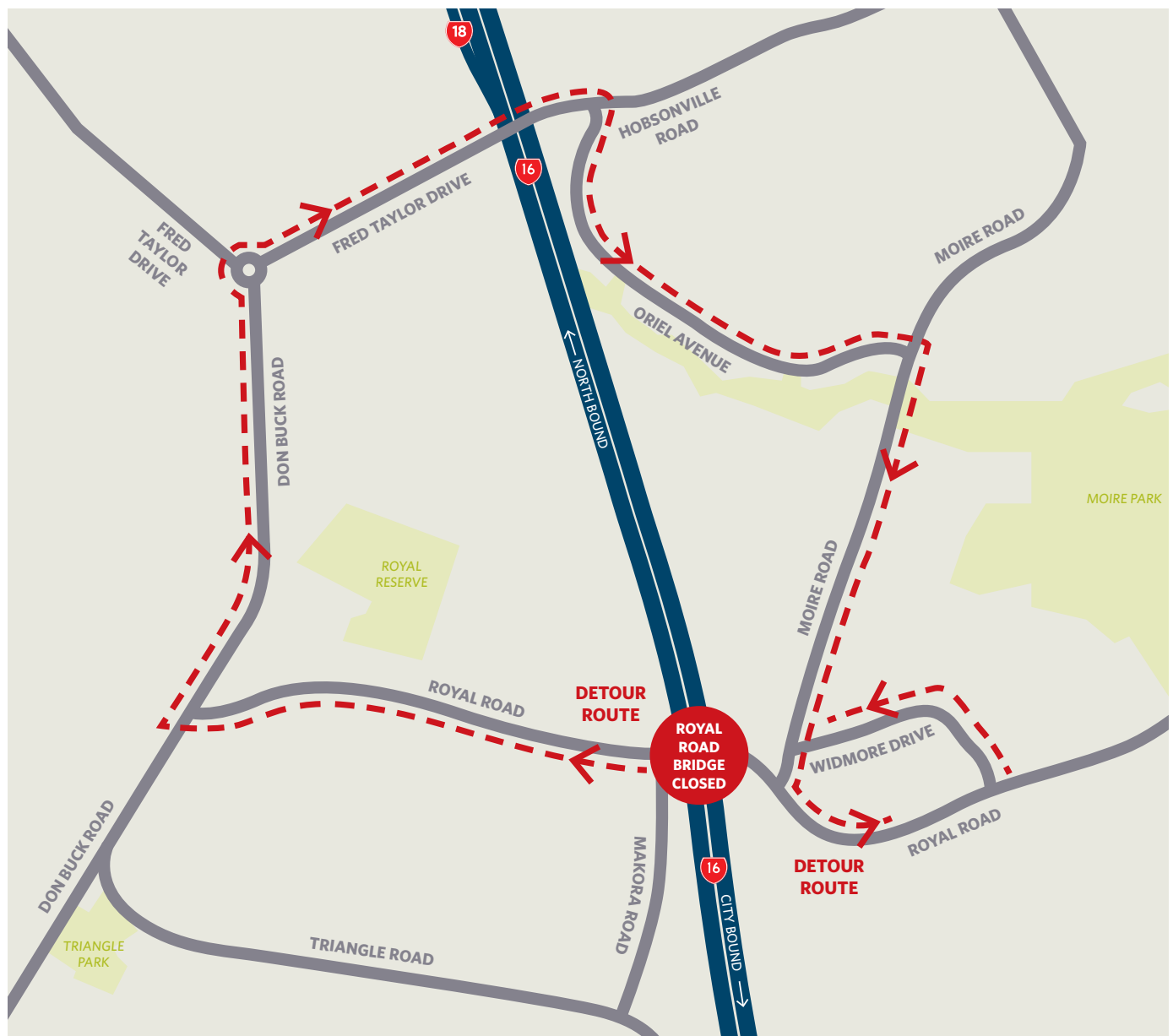
Royal Road Bridge over State Highway 16 will be closed overnight on Saturday 9 June from 7pm to 8am on Sunday 10 June.

The closure will be in place while we join or 'stitch' the new bridge spans together with reinforced concrete.

The concrete needs 12 hours to cure or set. Vibration from passing traffic will affect the quality of the cure and because of this we will close the bridge to vehicle traffic.

You will still be able to walk over the bridge. If you are driving, please follow the detours in place on the night.

SH16 will also be closed in both directions from Brigham Creek to Lincoln Road from 11pm to 5am on the night.





Construction of the new Lincoln Road on-ramp to SH16 heading north.

What's happening at the Lincoln Road on-ramp?

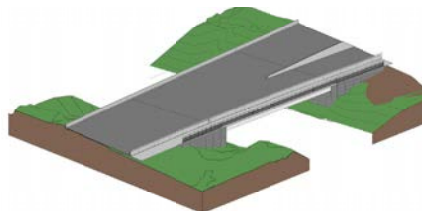
The new Lincoln Road on-ramp to SH16 will be longer and provide a smoother, safer merge for traffic joining SH16 going north. We will also build a new bridge over Huruwuru Creek.

The new bridge will be built in two halves. To build the first half we will excavate all the material that overlays the rock at the bridge abutment and replace this with a mass concrete block along with associated temporary works. We will then build the bridge abutment and large super T beams. Finally we will build the bridge deck and associated structures.

Once this half of the bridge is built, traffic will be moved onto the newly built spans before the existing bridge is demolished and we repeat the process and build the second side of the bridge.

We will provide details of lane changes in updates closer to the time.

The new bridge will feature a pedestrian and cyclist shared use path on the western side. The new bridge is expected to be completed early 2019.



Graphic of Lincoln #1 Bridge to be constructed.

Meet one of the team

Dan Trotman



What is your role on the project?

I am the Construction Manager responsible for all construction activities on the project. I work with team members; engineers, superintendents, traffic, quality assurance, health & safety, environmental and stakeholders to ensure the project is constructed to a high standard with zero incidents and no defects.

How did you come to be in this role?

I have a Bachelor's Degree in Civil Engineering from the UK, where I started work as a site engineer. Three years into my career, I followed a lifelong dream to work overseas. Canada, Australia and New Zealand were the options. I chose New Zealand with a view of spending two years here. Over 12 years later I am still here.

I have worked on some amazing projects with some amazing people. With each job comes a new role, progressing to my current role here on the SH16 Lincoln to Westgate Upgrade.

What do you do in your spare time?

Not a lot really, am a pretty standard everyday person. I enjoy mountain biking and snowboarding with my wife of 10 years and six year old son, both of whom also love mountain biking and we are usually accompanied by our two dogs.



PROJECT CONTACTS

Please contact Sheila Herrick at sheila.herrick@downer.co.nz or 022 687 0391. Keep up with progress at: www.nzta.govt.nz/projects/the-western-ring-route/sh16-lincoln-to-westgate/