

# THE BIGGER PICTURE

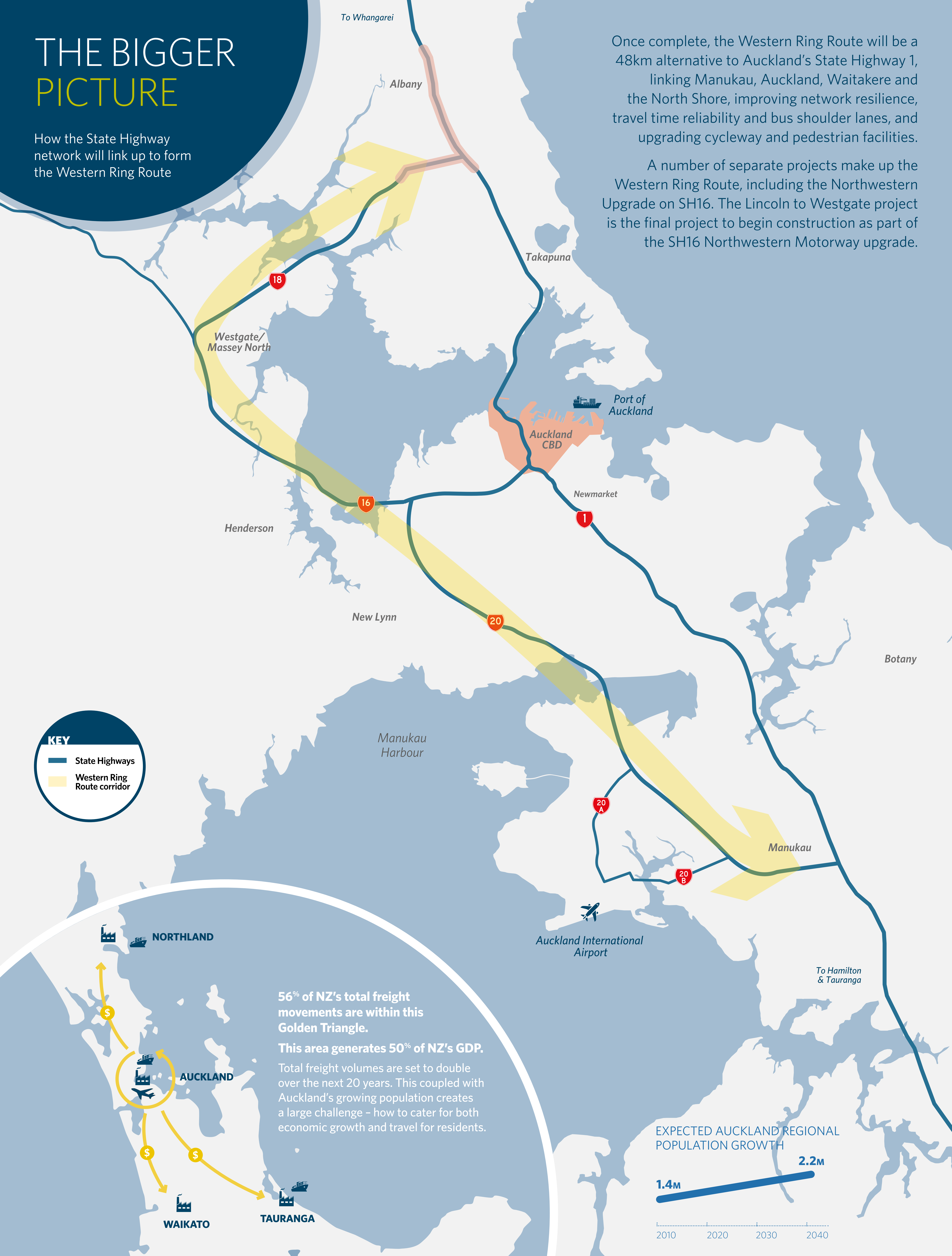
How the State Highway network will link up to form the Western Ring Route

Once complete, the Western Ring Route will be a 48km alternative to Auckland's State Highway 1, linking Manukau, Auckland, Waitakere and the North Shore, improving network resilience, travel time reliability and bus shoulder lanes, and upgrading cycleway and pedestrian facilities.

A number of separate projects make up the Western Ring Route, including the Northwestern Upgrade on SH16. The Lincoln to Westgate project is the final project to begin construction as part of the SH16 Northwestern Motorway upgrade.

**KEY**

- State Highways
- Western Ring Route corridor



**56% of NZ's total freight movements are within this Golden Triangle.**  
**This area generates 50% of NZ's GDP.**  
 Total freight volumes are set to double over the next 20 years. This coupled with Auckland's growing population creates a large challenge – how to cater for both economic growth and travel for residents.

