






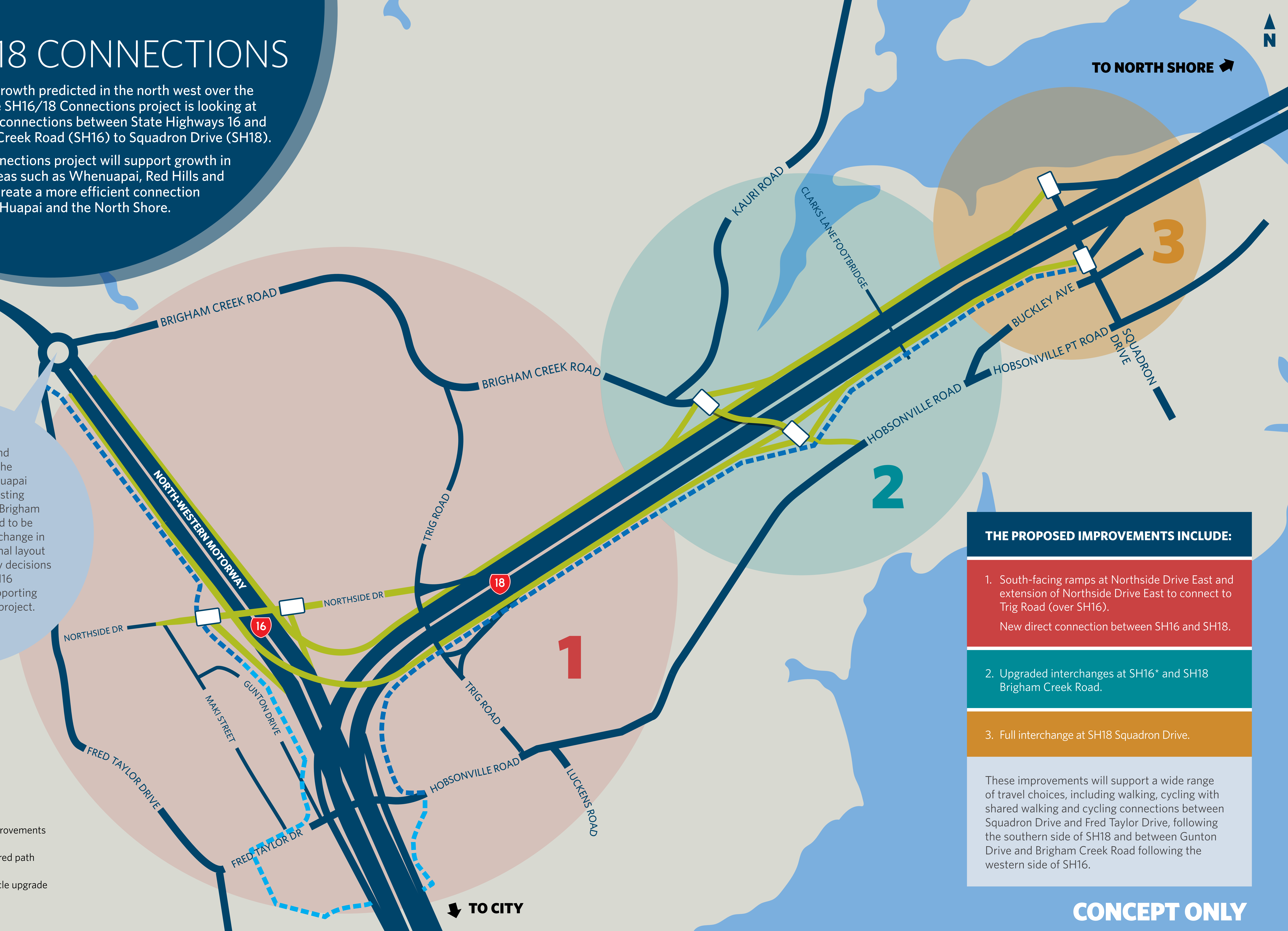
SH16/18 CONNECTIONS

With significant growth predicted in the north west over the next 30 years, the SH16/18 Connections project is looking at improvements to connections between State Highways 16 and 18 from Brigham Creek Road (SH16) to Squadron Drive (SH18).

The SH16/18 Connections project will support growth in the north west areas such as Whenuapai, Red Hills and Hobsonville and create a more efficient connection between Kumeu/Huapai and the North Shore.

*To support growth and maintain access for the Westgate and Whenuapai growth areas, the existing roundabout at SH16 Brigham Creek is likely to need to be upgraded to an interchange in the long term. The final layout may be influenced by decisions on the alternative SH16 corridor, another Supporting Growth Programme project.

- KEY**
-  Intersection
 -  Current road
 -  Proposed improvements
 -  Proposed shared path
 -  Local road cycle upgrade



THE PROPOSED IMPROVEMENTS INCLUDE:

1. South-facing ramps at Northside Drive East and extension of Northside Drive East to connect to Trig Road (over SH16).
New direct connection between SH16 and SH18.
2. Upgraded interchanges at SH16* and SH18 Brigham Creek Road.
3. Full interchange at SH18 Squadron Drive.

These improvements will support a wide range of travel choices, including walking, cycling with shared walking and cycling connections between Squadron Drive and Fred Taylor Drive, following the southern side of SH18 and between Gunton Drive and Brigham Creek Road following the western side of SH16.

CONCEPT ONLY