



SH1 Tinwald Corridor Improvements

Project Overview

Waka Kotahi NZ Transport Agency is working with Ashburton District Council, iwi and KiwiRail to improve the SH1/Lagmhor Road/Agnes Street intersection and adjacent streets.

We'll be installing traffic lights, improving the existing rail level crossing on Lagmhor Road and improving pedestrian and cycling facilities.

Weather dependent, we expect everything to be finished by the middle of 2024. The project is part of the New Zealand Upgrade Programme, the Government's \$8.7 billion investment in growing communities across the country.

What work is coming up?

During the first two weeks, we will establish our work site and commence underground service location and traffic light ducting.

This work will include the use of a hydro-excavator which is a noisy operation.

We apologise for any inconvenience this might cause.



Example of hydro-excavation

Traffic Impacts

A 30km/h speed restriction and other traffic management will be in place during construction. Please drive with care when travelling through the site, allow extra time and pay attention to signs and changes to the road layout.

Two lanes will be open to traffic for the majority of the works, with several temporary traffic management layouts installed as the project progresses. These will be communicated closer to the time. To keep school students and other pedestrians and cyclists safe, pedestrian refuges will be maintained, along with temporary fencing sitewide.

We will update you ahead of any significant changes to the site as work gets underway.

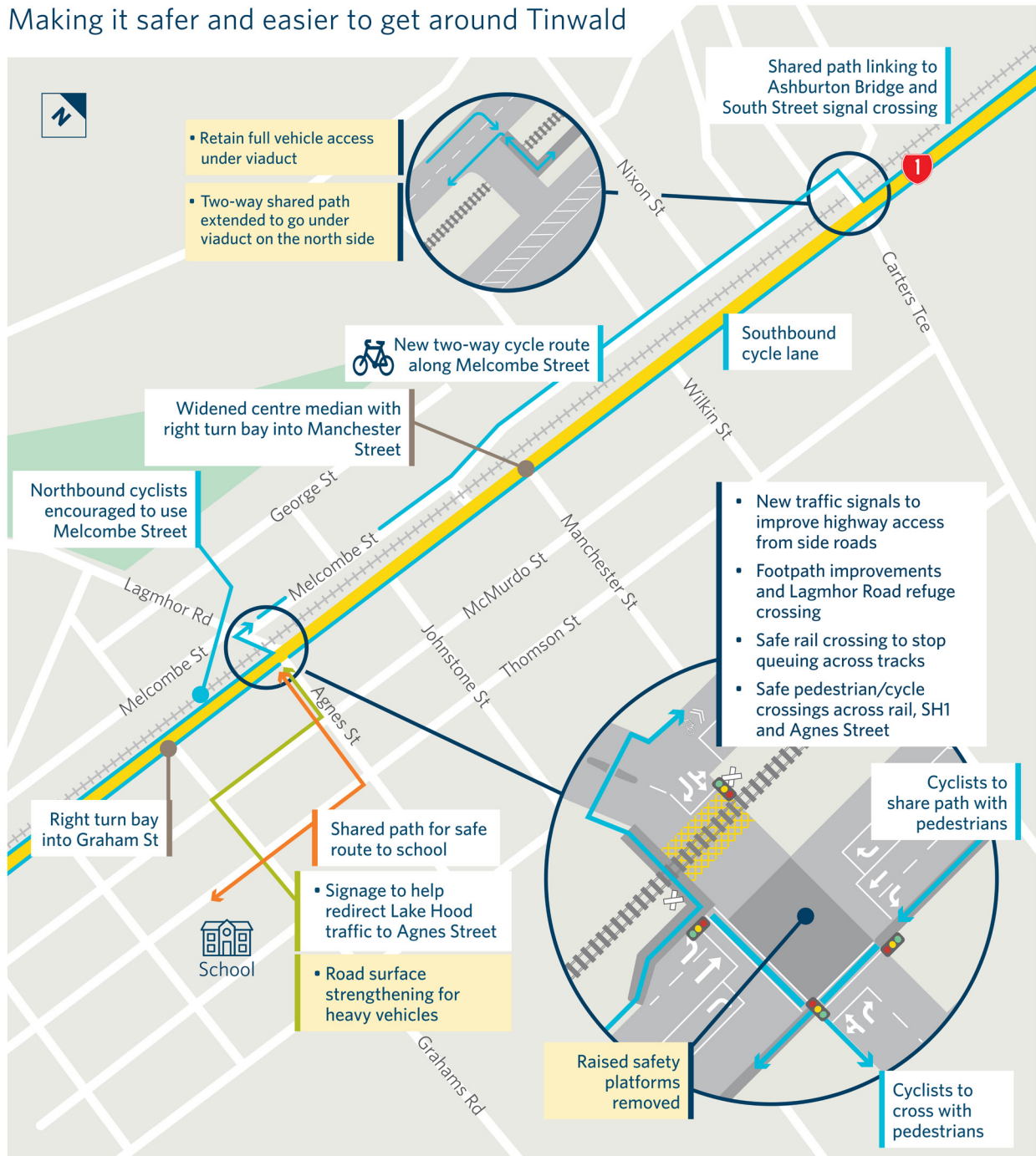
GENERAL INFORMATION

The majority of the work will be carried out from Monday to Friday between 7:00am and 7:00pm, and on Saturdays and at night if needed. When work is required to be undertaken at night, this will be communicated to those potentially affected. Measures will be in place to minimise noise, dust and vibration levels.

Please keep an eye out for updates online and in your letterbox as the project progresses.

Work Area

Making it safer and easier to get around Tinwald



CAN WE HELP?

Please contact Fulton Hogan on 0800 ROAD FH (0800 7623 34)

Monday to Fridays, 8am - 5pm, to discuss any specific access needs such as nurse/doctor visits or Meals on Wheels deliveries to your property. Contact us at anytime if the matter is urgent. For more information on the SH1 Tinwald Corridor Improvements project or to subscribe to updates, please visit www.nzta.govt.nz/projects/sh1-tinwald