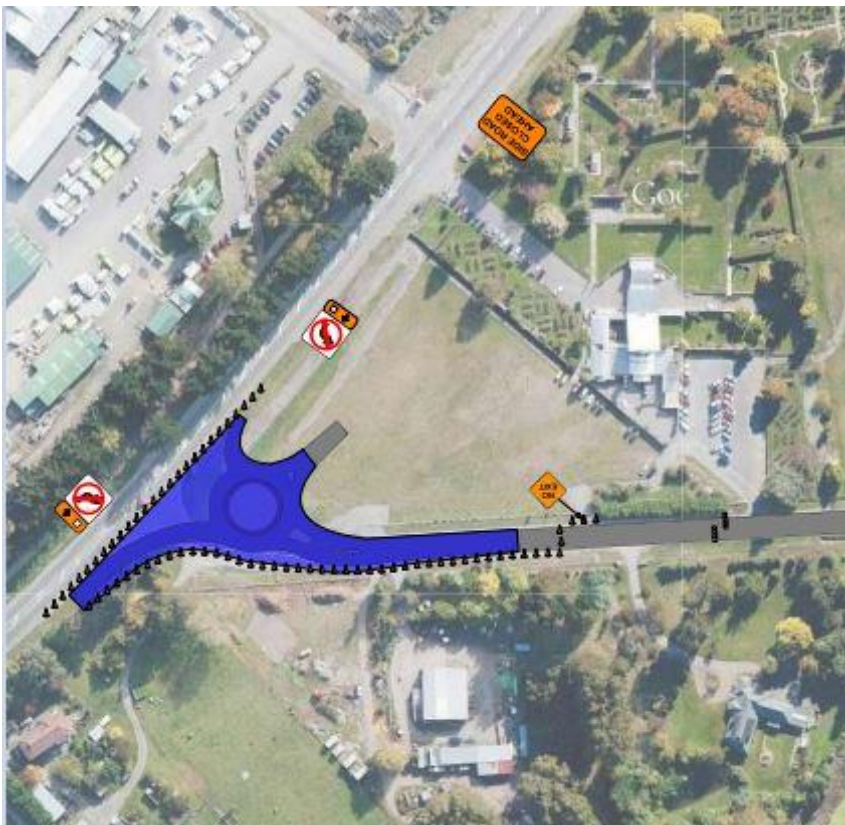


(SH1) Johns Road Four-laning Groynes to Sawyers Arms Part of the Western Corridor

PROJECT UPDATE

October 2015



WILKINSONS RD – ACCESS TO JOHNS RD CLOSED UNTIL END OF MARCH 2016

Access to and from Wilkinsons Road at the Johns Road intersection will be closed to all traffic from Monday 5 October. This is to allow the construction of a roundabout that will provide a new access to the Crematorium in the future and an exit for a new service lane on Johns Road.

Road users in this area will need to use Sawyers Arms Road to access Johns Road.

During construction access to the Crematorium will still be possible on Wilkinsons Road via Gardiners Road.

When this work is completed access to Johns Road from Wilkinsons Road will be limited to a left turn only.



**IMPROVE
SAFETY**



**REDUCED
CONGESTION**



**SUPPORT
ECONOMIC
GROWTH**



**JOB CREATION
AND ACCESS
TO JOBS**



Information on this project is available at <http://www.nzta.govt.nz/projects/christchurch-motorways/>. The NZ Transport Agency produces project update newsletters. If you would like to receive these, fill in the online form on the website.

You can follow us on Facebook and Twitter:
www.facebook.com/nztasouthisland
www.twitter.com/nztacwc