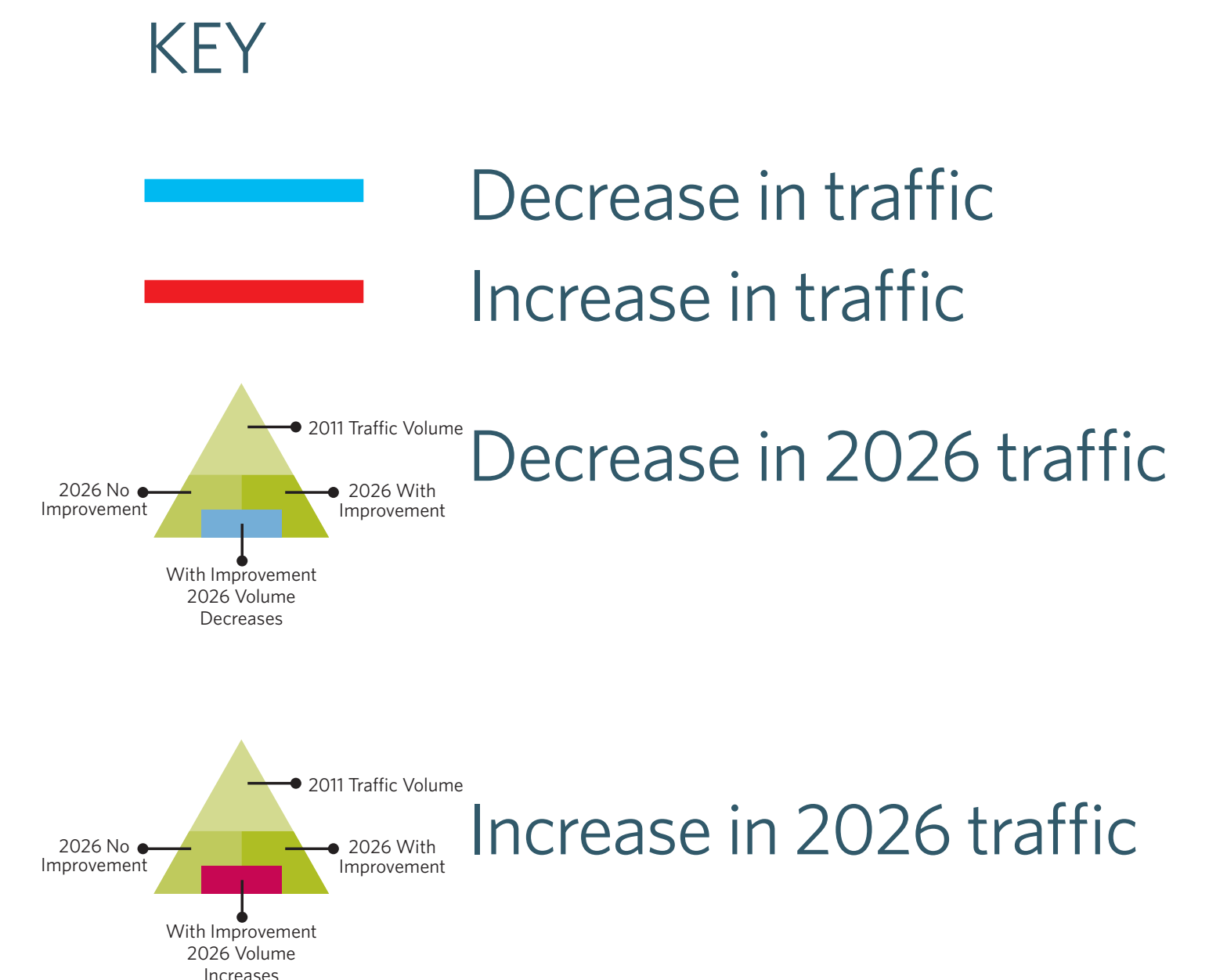
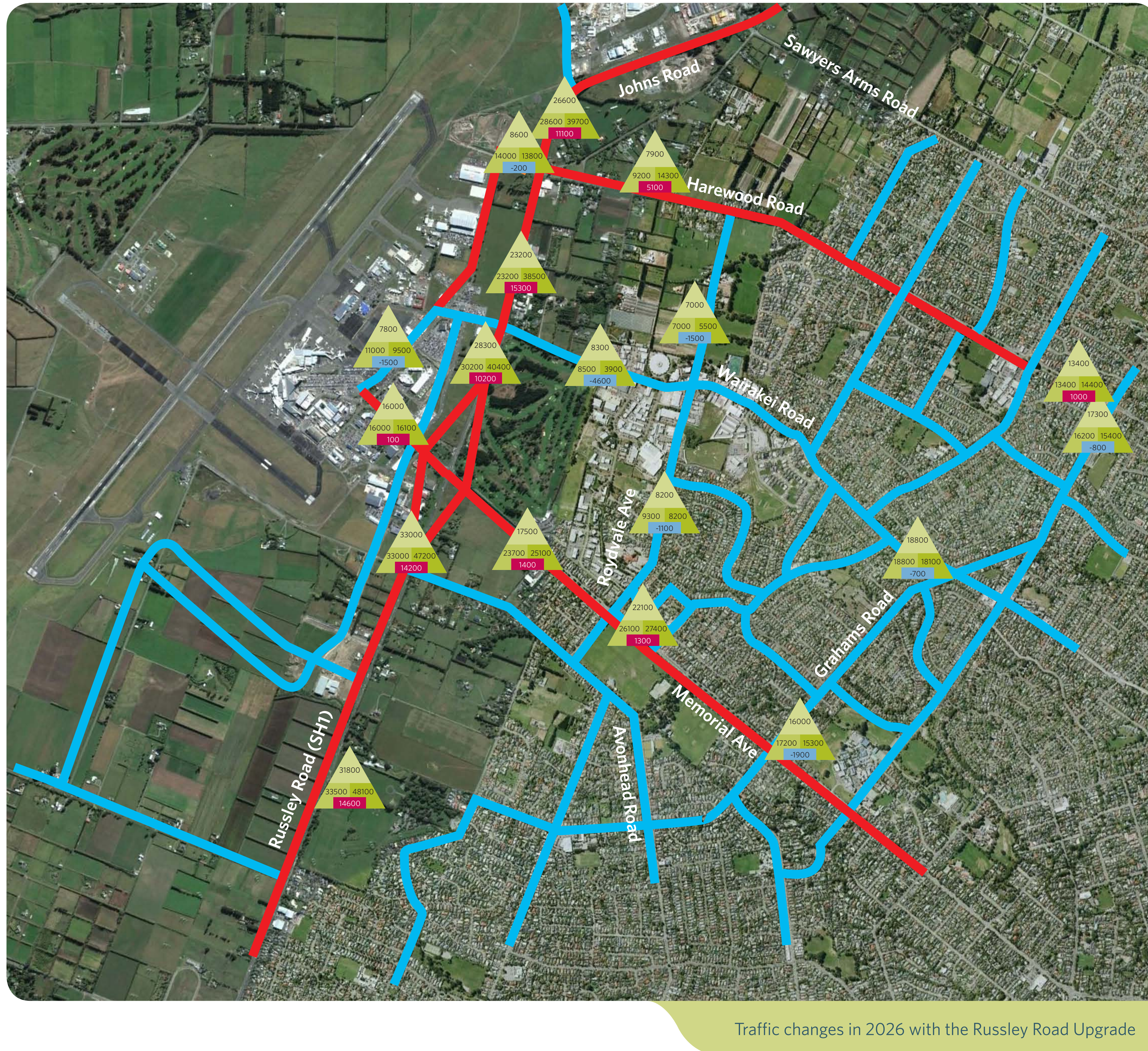


## Traffic Impact Assessment Summary

This study measured the effects this project will have on traffic using the state highway and the surrounding local roads. Traffic modelling was used to predict future traffic volumes and network conditions in 2026 with and without the Russley Road (SH1) upgrade.



### Without the Russley Road (SH1) improvements (2026)

There will be:

- Heavy congestion and considerable delays at all intersections on Russley Road (SH1)
- Increased traffic and delays on the local roads including Harewood Road, Wairakei Road, Memorial Avenue, Sawyers Arms Road and Roydvale Avenue.

### With the Russley Road (SH1) improvements (2026)

There will be:

- Overall improvement to network performance
- A considerable reduction in delays for vehicles travelling along Russley Road (SH1) even with traffic numbers increasing on Russley Road
- An increase in traffic on some east-west routes like Harewood Road and Memorial Avenue due to:
  - Drivers choosing to use the improved Russley Road (SH1)
  - The changes at the Russley (SH1)/Wairakei intersection
 However, delays will not increase as these roads have been built to handle these traffic increases
- A decrease in traffic on Roydvale Avenue
  - There will be an increase in local trips (e.g. from the Airport to the Wairakei Business area)
  - But there will be an even greater decrease in through traffic (rat-runners) as delays reduce on Russley Road
- A reduction in traffic on all other local road.

The transportation impact assessment confirmed the need for the Russley Road (SH1) upgrade. The NZTA and City Council will continue to assess the performance of the nearby roads and intersections, and improvements will be made as needed.

**This panel summarises the Traffic Impact Assessment of this project on the Northwest Christchurch road network**