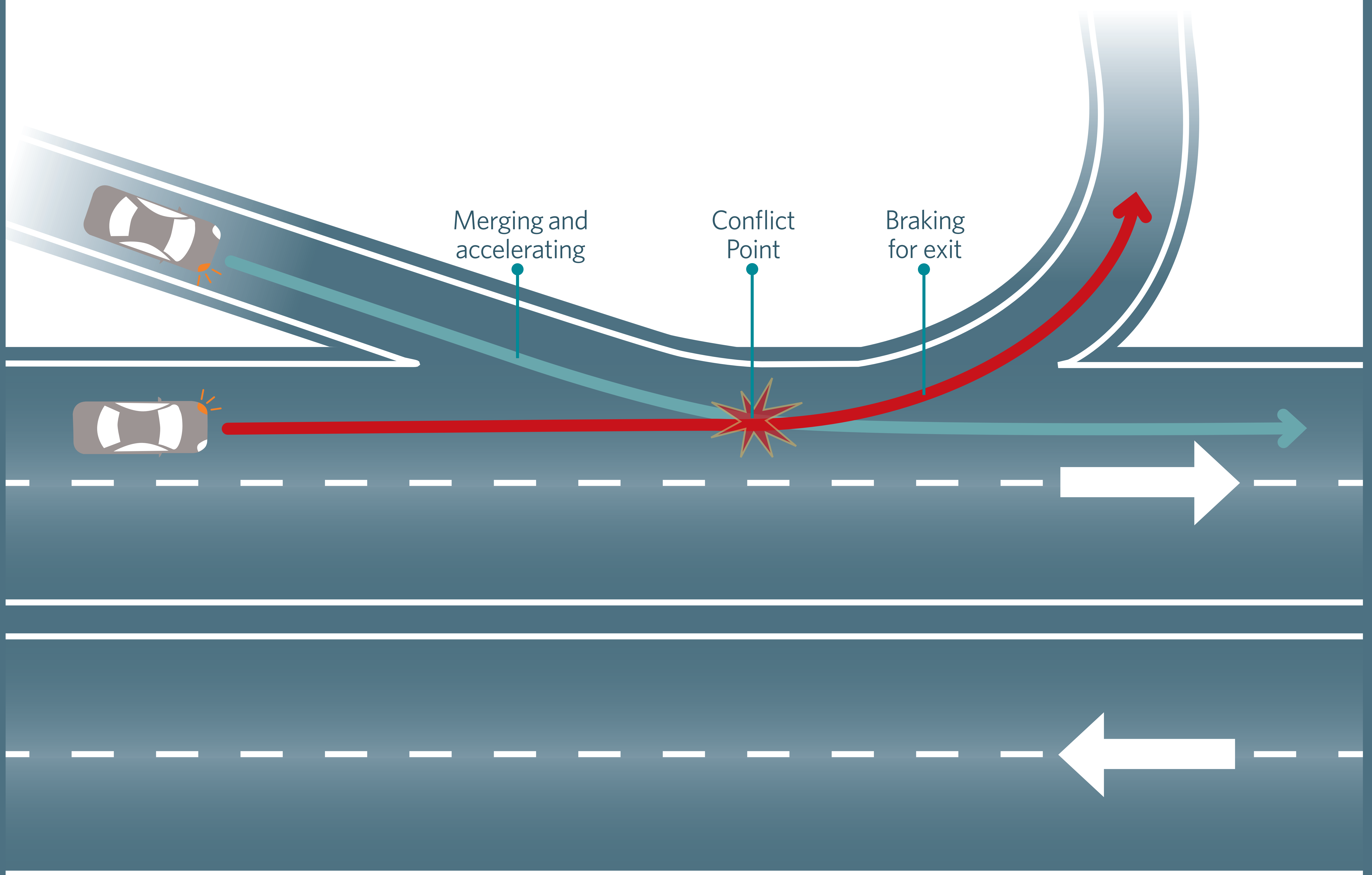




Why can't Avonhead and Wairakei Roads remain open

A common question we receive is: why are you closing direct access to Russley Road (SH1) at Wairakei Road and Avonhead Road?

The answer is: It is not safe to have slip lanes close together.



This panel shows why direct access from Avonhead Road and Wairakei Road to Russley Road (SH1) is not safe