

1 Rangiriri project update

September 2016

The project team is making good progress at Rangiriri with the next stages of the project planned to open

08
September

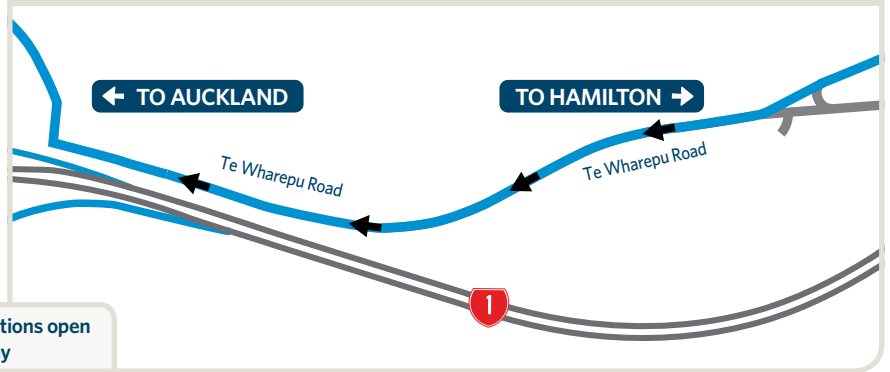
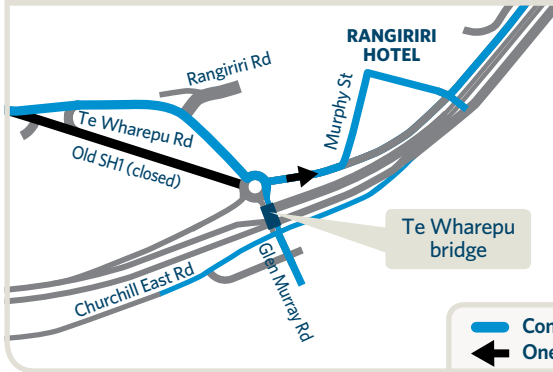
Murphy Street off-ramp open

On September 8 the off-ramp into Rangiriri which connects to Murphy Street will open to traffic and the newly named Te Wharepu Bridge will be operating two-way. All traffic from Glen Murray wanting to head south will use this connection and access the Expressway through Rangiriri and the south-bound on-ramp. All other traffic wanting to head north will take the new Te Wharepu Road.

25
October

Local link road (Te Wharepu Road) one-way only for five weeks.

The local link road between Rangiriri and Te Kauwhata will be one-way only from October 25. Only north-bound traffic from Rangiriri will be able to use this link road. South-bound traffic from Te Kauwhata, wanting to get to Rangiriri, will need to use the Expressway and exit at Rangiriri. The reason for this one-way is so the contractor can work on the new alignment of the intersection at Te Kauwhata and carry out work to turn this road into a local road which will be managed by Waikato District Council in the future. This is a temporary one-way which will be in place for approximately five weeks.



— Connections open
← One way

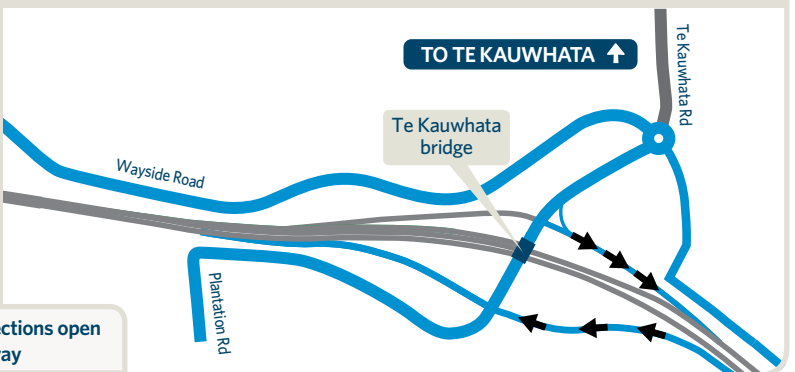
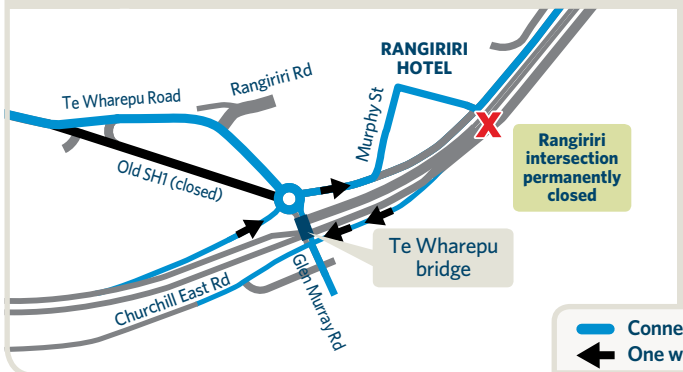
19
October

Rangiriri intersection to close

The Rangiriri intersection with State Highway 1 will permanently close from October 19 and all traffic wanting to get to Rangiriri will use the Rangiriri interchange. The south-bound off-ramp at the Rangiriri interchange will also open at this time.

New connections open at Te Kauwhata

The south-bound on-ramp at the Te Kauwhata interchange will open at this time.



— Connections open
← One way

i Keeping you informed

It's important to the project team we keep you informed as the project progresses.

These works are key steps towards final project completion connecting local roads to the new expressway. We appreciate your patience as drivers become accustomed to the new layouts.

f Follow us on Facebook
[facebook.com/Waikatoexpressway](https://www.facebook.com/Waikatoexpressway)

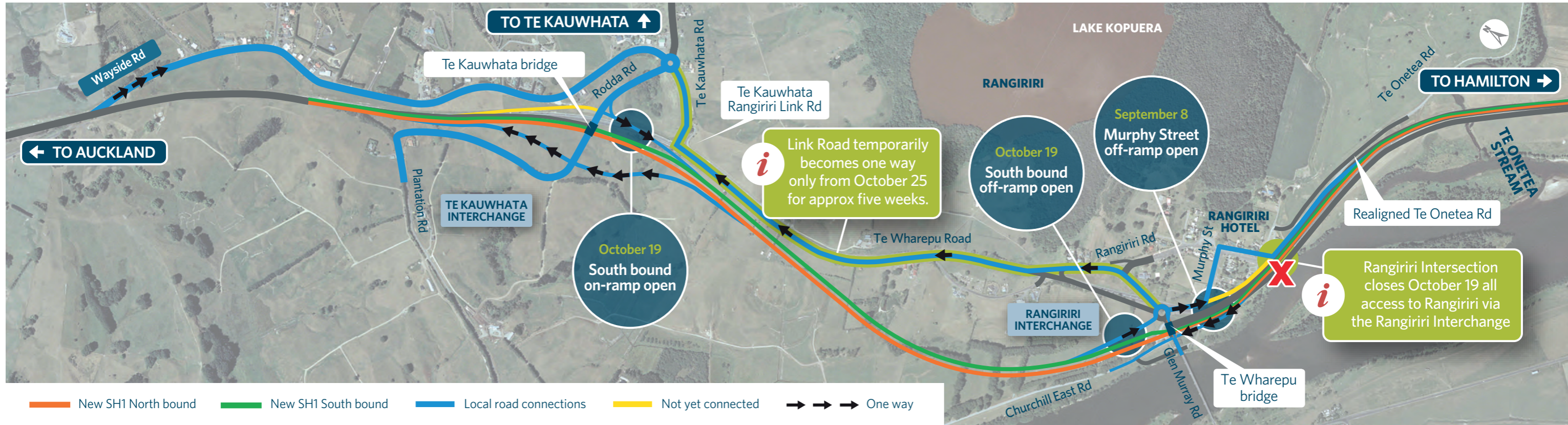
🔗 Visit our website
www.nzta.govt.nz/rangiriri

✉ Email us with feedback
Waikatoexpressway@nzta.govt.nz

We will be providing updates to the local community about specific works through letter drops and information flyers.

SIGN UP To sign up for our email newsletters go to www.nzta.govt.nz/rangiriri

Rangiriri staged opening: Connections open September 8 and October 19



Rangiriri Paa and Te Wheoro Redoubt returned to iwi ownership

I Riro whenua atu, me hoki whenua mai
Land that was taken, that land shall be returned

This statement was the driving mantra of the Waikato Raupatu Settlement Act 1995. Waikato was the first iwi to settle and much of the claim was focused around the invasion of Rangiriri in 1863.

On August 19, a 5am ceremony was held at Rangiriri Paa to mark the returning of Rangiriri Paa and Te Wheoro's Redoubt to iwi ownership.

As part of the agreement Heritage New Zealand and DOC will also work alongside iwi to provide expert advice over the management and protection of the reserves as heritage places.

During the ceremony Waikato-Tainui offered time for each of the iwi present that morning to conduct a karakia from their iwi. Several karakia were carried out. Waikato finished off the proceedings with its traditional karakia which was given to the second Maaori King, Taawhiaao, who received this karakia from Taranaki iwi. The karakia provided some re-connection for those iwi whose ancestors were at Rangiriri Paa in 1863.

The iwi from around the country who were represented were given a Tewhatewha, a gift on behalf of Waikato-Tainui and on behalf of Kiingitanga.

Following the karakia several native plants were planted in the wetland below the paa. These plants are a recognisable point of difference to those plants already planted in the wetland. It means that when the iwi visit the site they will be able to easily recognise their contribution to the day.



Deputy Prime Minister, Hon Bill English, addressing Kiingi Tuheitia and assembled guests at Turangawaewae Marae.



Minister for Arts, Culture and Heritage, Hon Maggie Barry, formally presented Kiingi Tuheitia with the deed of vesting.



Acknowledgement of the vesting by Waikato-Tainui Toa. (Photos courtesy of Heritage New Zealand)

Did you know...

The new bridge at Rangiriri and the link road have been named Te Wharepu after Pene Te Wharepu who was the architect of the Rangiriri Paa and was mortally wounded in the 1863 Battle of Rangiriri.

Longswamp section to start in October

As works near completion at Rangiriri, the start of construction on the Longswamp section will get under way.

The NZ Transport Agency has awarded the contract to build the Longswamp section to Downer New Zealand Ltd with work planned to start in October.

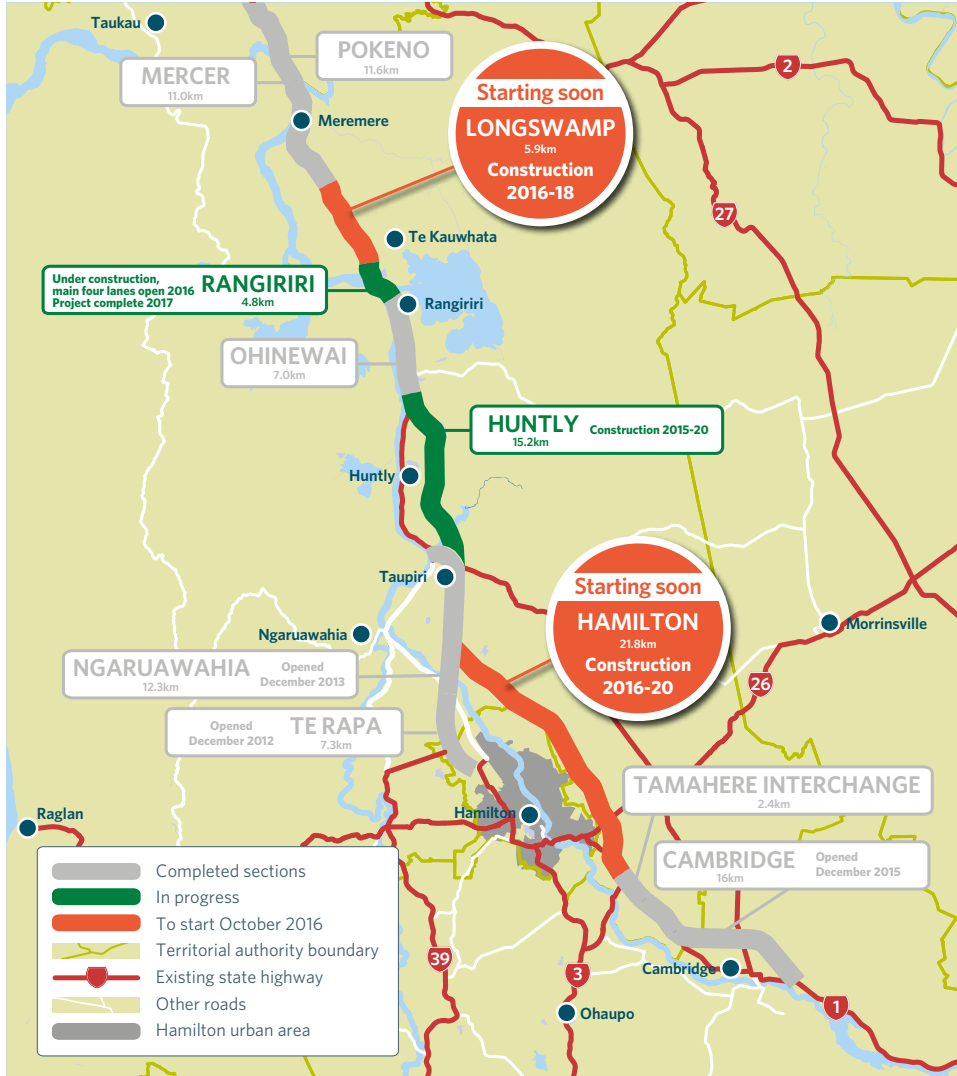
Most of their early work is planned for the northern end of the project, near Hampton Downs which will allow Fletchers to complete the job at Rangiriri and minimise any delays to drivers travelling between the two projects on State Highway 1.



Looking south from Hampton Downs. Work will start on the Longswamp section in October, starting where the project will connect to the current four lanes.

Expressway overview map

The Waikato Expressway is one of the Government's seven Roads of National Significance. The Expressway will improve safety and reliability and reduce travel times and congestion on State Highway 1 by delivering a four-lane highway from the Bombay Hills to south of Cambridge. It is being built in seven sections.



Work on backfilling old SH1 begins

A key focus for the contractor over the next three months will be backfilling the old State Highway 1 to restore the earth form of the historic Rangiriri Paa.

Approximately 20,000m3 of earth will need to be used to backfill the site.

Once the earth infill is complete, work on the symbolic restoration of the Rangiriri Paa will begin in the New Year. Starting the earth infill will be a significant milestone for the project.

Concept plans for the paa have been refined and are expected to be finalised in the next couple of months with Waikato Tainui and Heritage NZ. The concept design is a reinterpretation of the paa, using the military survey of the time as a footprint layout.



Old State Highway 1

The Waikato Expressway will...

- Reduce the travel times between Auckland and South of Cambridge by up to 35 minutes
- Significantly reduce the number of deaths and serious injury crashes on this section of State Highway 1
- Increase the highways capacity and passing opportunities
- Reduce traffic congestion and improve safety within smaller communities like Huntly, Ngauwahia and Cambridge by significantly reducing through traffic

Any questions?

Adrian Bathgate
 NZ Transport Agency, Communications and stakeholder liaison
 Phone: 07 958 9601 Email: Adrian.Bathgate@nzta.govt.nz

Paul Nimmo
 Fletcher Construction, Traffic and stakeholder manager
 Mobile: 027 206 4212 Email: PaulN@fcc.co.nz