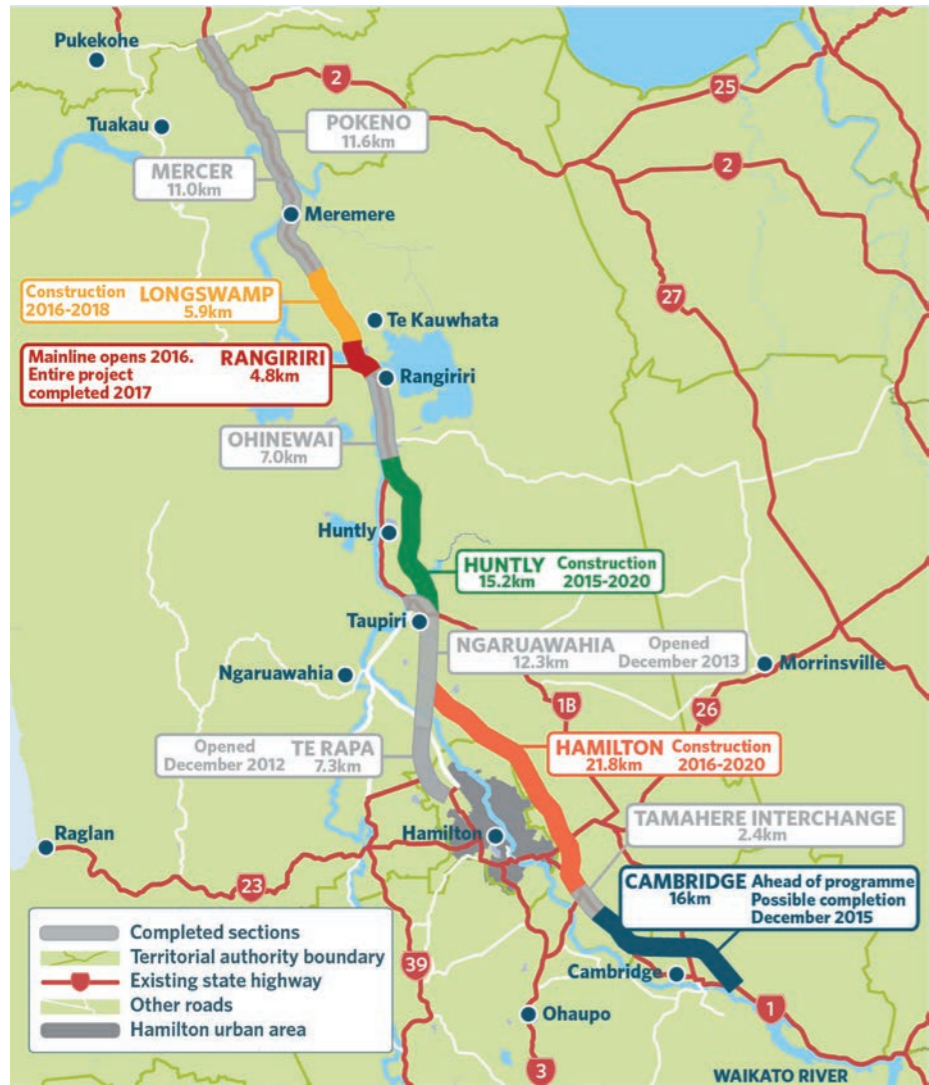


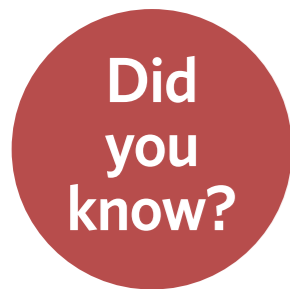
Expressway overview map

The Waikato Expressway project will improve safety and reliability and reduce travel times and congestion on State Highway 1 by delivering a four-lane highway from the Bombay Hills to south of Cambridge. The Expressway is being built in seven sections.



The Rangiriri section involves

- 1.6 million cubic metres of earthworks
- 12 excavators ranging from 12 to 40 tonne working six days a week
- 16km of stone columns around the Rangiriri interchange to strengthen the ground
- beams for the Rangiriri bridge weigh between 25 and 30 tonnes each



Rangiriri wins environmental award

The Rangiriri section of the Waikato Expressway came up trumps at the recent Waikato Regional Council Earthworks awards.

The Fletcher project team was recognised jointly alongside HEB Construction from the Cambridge section winning the best large earthworks site award.

The 4.8km section involves 1.6 million cubic metres of earthworks.

Hamilton's Highways Manager Kaye Clark says it's great to see the industry being lauded for their work.

"It shows our commitment to careful planning and best practice to ensure our projects minimise any adverse effects on waterways and water quality."

Council chairperson Paula Southgate, who attended the ceremony, said the standards had been rising so much that the council had also introduced new "special recognition" awards this year.

"It's great to see such strong buy in from the industry to lifting their performance bar. The council really appreciates the efforts being made."



Earthworks at Rangiriri

1 Rangiriri project update

October 2015

Rangiriri Paa and urban design concepts finalised



An artist's impression of the Rangiriri Paa

Culture and heritage plans for the historic Rangiriri Paa have now been finalised. The Ministry for Culture and Heritage, Waikato-Tainui and Heritage New Zealand have worked together with the Transport Agency, Fletcher Construction and consultants Boffa Miskell to reach the final concept.

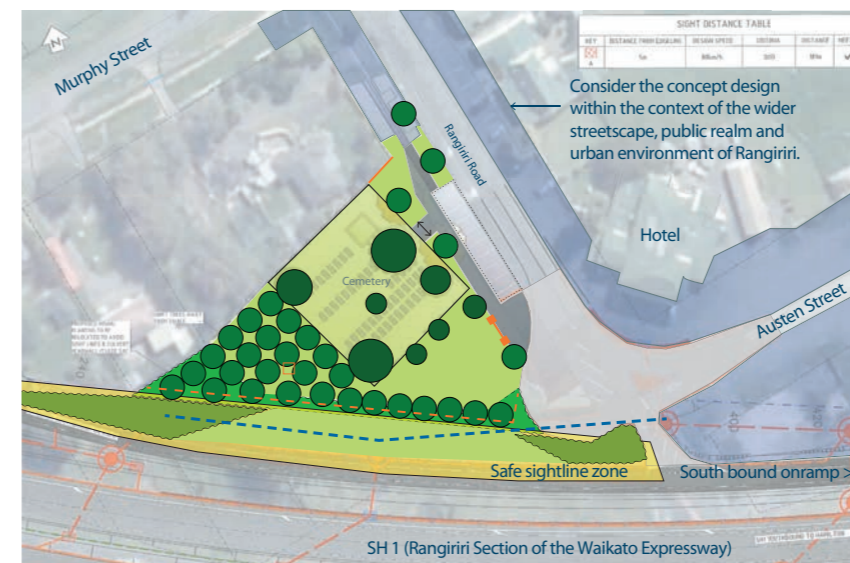
A multi-plate arch culvert that spans the original 1840 battle trench underneath the new Expressway is now largely complete. This is one element of a number that recognises the historic and cultural importance of the area in relation to the 1863 Battle of Rangiriri.

Realigning the state highway away from the paa site will allow the current section of SH1 to be filled in and a connection created between Rangiriri and the Paa. A parking area for buses and cars will also be provided as part of the design.

A concept plan for the urban design of the entrance to Rangiriri, alongside Rangiriri Road and adjacent to the Rangiriri Hotel, has also been developed in consultation with the Waikato District Council.

The plan will include a planted screen between the future south-bound on-ramp to the Expressway and the memorial area. The WWII Memorial Gates will be reinstated and consideration will be given to providing a picnic area nearby.

The heritage of the area is also being reflected on the Rangiriri interchange bridge. The bridge's concrete barriers were cast onsite and include a palisade pattern to reference the historic Rangiriri Paa.



KEY	
	Existing Reserve trees
	Notional trees (e.g. Totara)
	Notional native screen planting
	Low native planting
	Notional Lawn and mown grass
	Reserve fence (notional)
	Drainage (notional)
	Footpath/ paving

Concept design for entrance to Rangiriri

Design considerations:



Reference to battle and heritage themes to create a sense of place

Introduce native trees - ie totara

Reinstatement of WWII Memorial Gates

Widen pedestrian space around the cemetery

Consider mainstreet character and layout

Any questions?

Nicola Martin
 NZ Transport Agency, Communications and stakeholder liaison manager
 Phone: 07 958 7260 Email: Nicola.martin@nzta.govt.nz

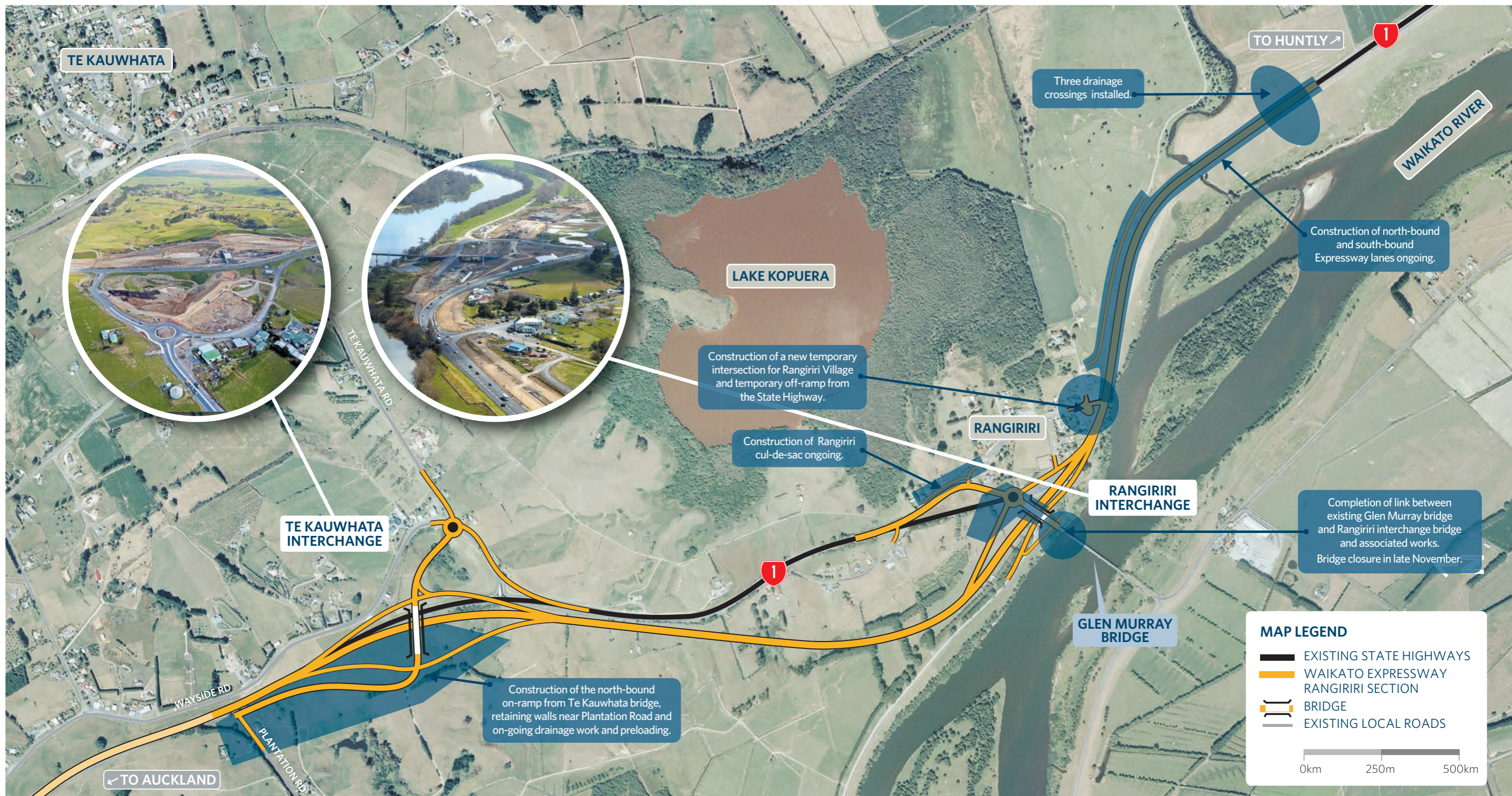
Paul Nimmo
 Fletcher Construction, Traffic and stakeholder manager
 Phone: 07 853 0553 Mobile: 027 206 4212 Email: PaulN@fcc.co.nz

Keeping you informed

Keeping the community informed about progress on the Rangiriri section is important to the project team.

Along with these quarterly updates and regular updates to residents of works happening in their area you can also check our website and the Facebook page.

- Follow us on Facebook [Facebook.com/waikatoexpressway](https://www.facebook.com/waikatoexpressway)
- Visit our website www.nzta.govt.nz/rangiriri
- To sign up for our email newsletters go to www.nzta.govt.nz/waikatoexpressway



Work in full swing

The summer works season is under way which means motorists travelling through the site will see some changes to the traffic management on State Highway 1, while people accessing local roads in the area may have to negotiate some detours.

The Transport Agency and Fletcher Construction are working hard to minimise any disruption or delays and appreciate both the community and motorists' patience while they're carrying out this work.

The biggest change will be a proposed five-day closure of the Glen Murray Bridge, planned to start in the later part of November. Actual dates will be confirmed in the next few weeks to ensure we give everyone plenty of notice.

The closure will allow the team to connect the new Rangiriri interchange bridge to the existing Glen Murray Bridge and complete associated services and works including street lighting, traffic signals, footpaths and kerbs and line marking.

Other work happening across the site between now and December includes drainage crossings being installed across State Highway 1, south of Rangiriri, and ongoing works constructing both the future south-bound on-ramp at Rangiriri and the future south-bound lanes.

Work will also continue on the Rangiriri cul-de-sac and at the Rangiriri intersection, which includes the removal of the existing traffic islands at the Rangiriri intersection (adjacent to the Rangiriri Hotel).

Please note, the south-bound left turn into Rangiriri (currently closed) from the state highway will be opened to traffic again before Christmas. At the northern end of the project the team are busy constructing the north-bound on-ramp from the Te Kauwhata interchange and installing retaining walls and drainage.

Speed on State Highway 1 through the Rangiriri work site is restricted to 70km/h.
The speed limit is in place to protect both workers on site and the traveling public
Thanks for your patience.