

Green light to start work



Safety and capacity improvements on a busy stretch of State Highway 2 from Pokeno to Mangatarata are to get under way over the next year.

The NZ Transport Agency Board has approved investment, paving the way for a \$278 million upgrade to this popular regional highway. Work will begin in June this year on the design, consents and property purchase for a long-term overhaul of the route.

The main improvement on the 32km stretch of highway will see three lanes – with two lanes west-bound. There will also be four grade-separated intersections, wire rope median and side barriers and turnaround facilities. There will be three deviations from the current highway: at Maramarua, Kopuku and an undulating section west of the Mangatawhiri Stream.

The construction programme will be staged to match funding availability over several years and progress generally from west to east. The project is future-proofed to allow for four-laning when required. The speed limit will return to 100km/h when works are completed.

Let's stay in touch

Work on achieving improvements for this route has been ongoing for many years and has involved regular engagement with key stakeholders, landowners and the public.

Consultation with the community will continue as the project progresses and detailed designs become available.

As things get moving next year there will be more newsletters and a public information day.

You can also visit the website www.nzta.govt.nz/projects/maramaruahighway which will be updated as the project develops.

Background

This stretch of SH2 is operating at capacity. On average 15,560 vehicles (2200 are heavy) use this corridor daily.

During holiday periods and summer weekends, traffic volumes can reach 25,000 vehicles per day. Travellers from Auckland experience delays east-bound five times a year but their return journey results in long west-bound queues 12 times a year. This has led to the decision to provide two continuous west-bound lanes and space for a future east-bound lane.

The Pokeno to Mangatarata corridor has been developed in sections (see graphic overleaf):

- Section A: SH1/SH2 Pokeno to Mangatawhiri
- Section B: Mangatawhiri (upgraded in 2008)
- Section C: Kopuku (deviation north of Kopuku)
- Section D: Maramarua (deviation north of Maramarua)
- Section E: Maramarua to SH2/25 intersection

The roundabout at the intersection at SH2/25 is part of these improvements, and was finished in early 2015.

Key benefits of the improvements ahead include:

- To reduce death and serious injuries by 80% over 20 years
- Improve the KiwiRAP rating from 2.5 to 4 stars
- Improve journey time predictability
- Safer access for local communities
- Provision for cyclists, with wider shoulders



Keeping you informed

If you have questions talk to the Transport Agency

Project manager

Peter Murphy

phone: 07 958 7251

Email: peter.murphy@nzta.govt.nz

Senior communications advisor

Simon Brandon

phone: 07 958 7888

Email: simon.brandon@nzta.govt.nz

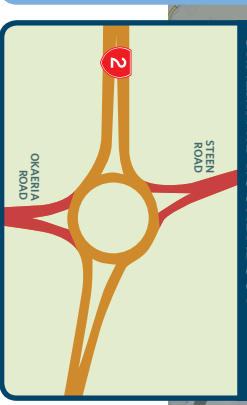
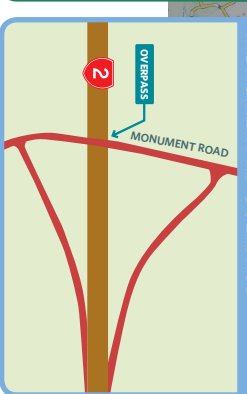
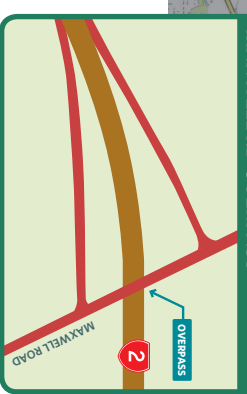
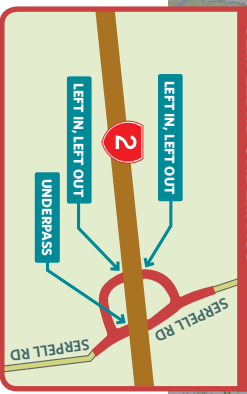
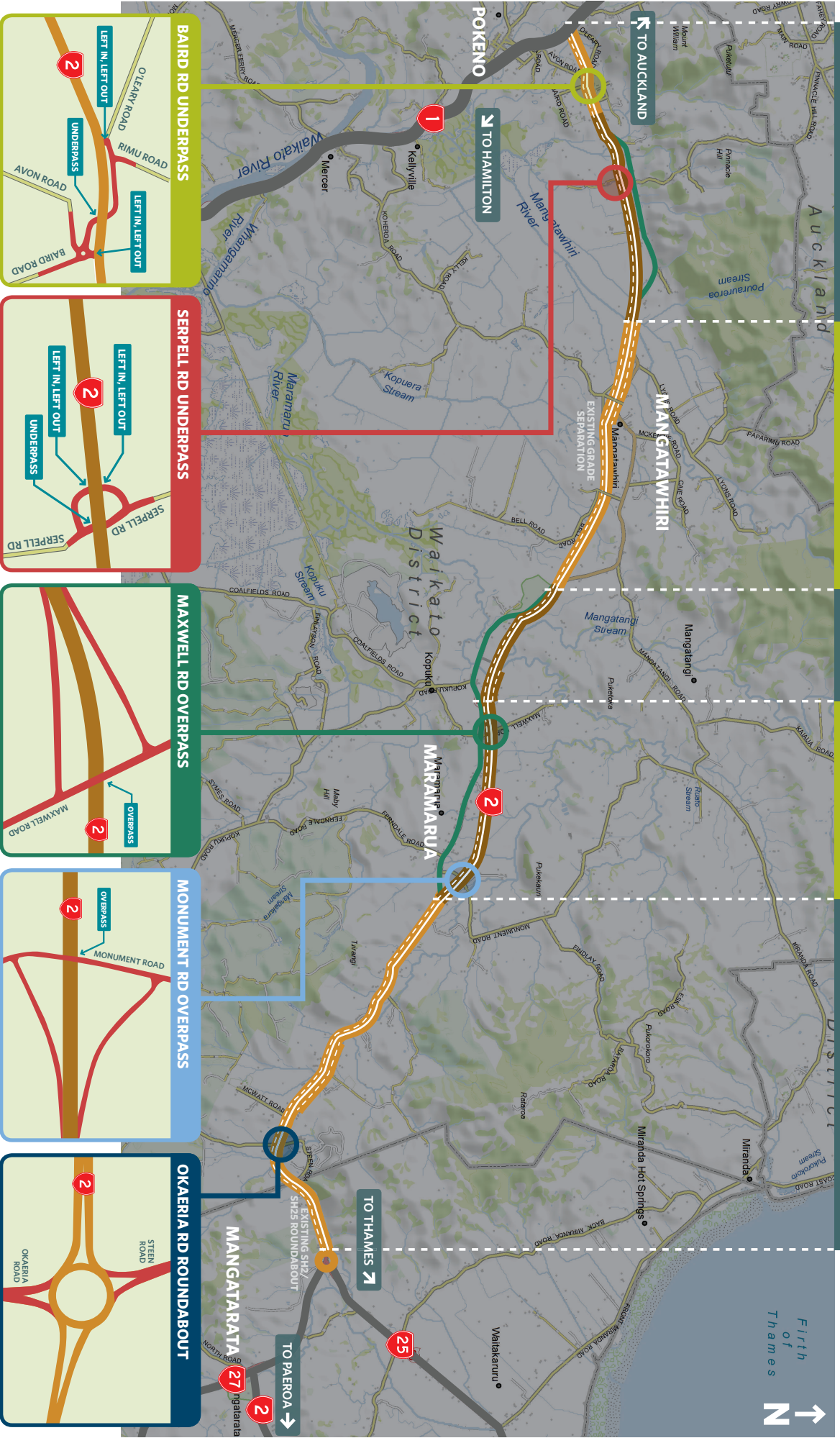
WESTERN SECTION
SECTION A

MANGATAWHIRI DEVIATION
SECTION B

KOPUKU
REALIGNMENT
SECTION C

MARAMARUA DEVIATION
SECTION D

EASTERN SECTION
SECTION E



MAP LEGEND

UPGRADE TO EXISTING STATE HIGHWAY WITH 2 LANES WESTBOUND AND 1 LANE EASTBOUND

PROPOSED REALIGNMENTS 2 LANE WESTBOUND AND 1 LANE EASTBOUND

CURRENT STATE HIGHWAY

EASTBOUND PASSING LANE