



## What's happening?

Since announcing our preferred alignment route for the Petone to Grenada Link Road in November 2015, we've been busy continuing to develop our proposals for the new route.

We've been gathering information to refine and confirm our proposals, including:

- A safety review
- Geotechnical assessment
- Baseline ecological monitoring of birds, bats, lizards, fish and flora
- Developing hydrological models for the identified water catchments.

We recently held a workshop with residents from the Horokiwi Community. This was a great opportunity to talk about the results of our safety and geotechnical work, and how this has allowed us to propose some adjustments to the corridor through the Horokiwi area [www.nzta.govt.nz/projects/petone-to-grenada-link-road/community-engagement/](http://www.nzta.govt.nz/projects/petone-to-grenada-link-road/community-engagement/). We also talked about how the community accesses Horokiwi Road now and how they might be connected to the new Link Road.

### Next steps

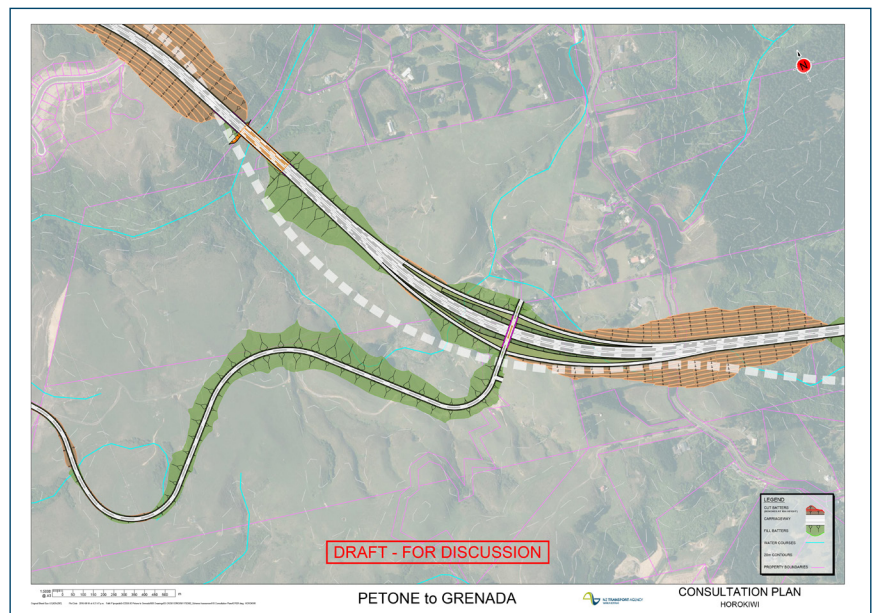
We'll be refining designs for the Petone and Tawa interchanges in the next few months.

We'll share this information with you and get feedback from affected communities and community representatives through a series of workshops. This information is an important part of the process and helps to confirm the land requirements for lodging consents.

We'll be in touch with workshop details and how you can get involved. We urge you to take this opportunity to come along and share your views with us.

This work is all part of the process to develop our proposals to the point where we can apply for the necessary consents to build the new Link Road. If the consent applications are successful, we are on target to begin construction in 2019.

Check out our website at [www.nzta.govt.nz/petone-grenada-link-road](http://www.nzta.govt.nz/petone-grenada-link-road) to read previous updates and for more detailed information about this project. If you have any further questions, please contact us directly on [petone2grenada@nzta.govt.nz](mailto:petone2grenada@nzta.govt.nz) or **0508 P2G INFO (724 4636)**.



## Contact us

**For the Petone to Grenada Link Road:**

**Website:** [www.nzta.govt.nz/petone-grenada-link-road](http://www.nzta.govt.nz/petone-grenada-link-road)

**Email:** [petone2grenada@nzta.govt.nz](mailto:petone2grenada@nzta.govt.nz)

**Freephone:** 0508 P2G INFO (0508 724 4636)

**Freepost:** Petone to Grenada Link Road Team

Freepost 225938

PO Box 5084, Thorndon, Wellington 6145