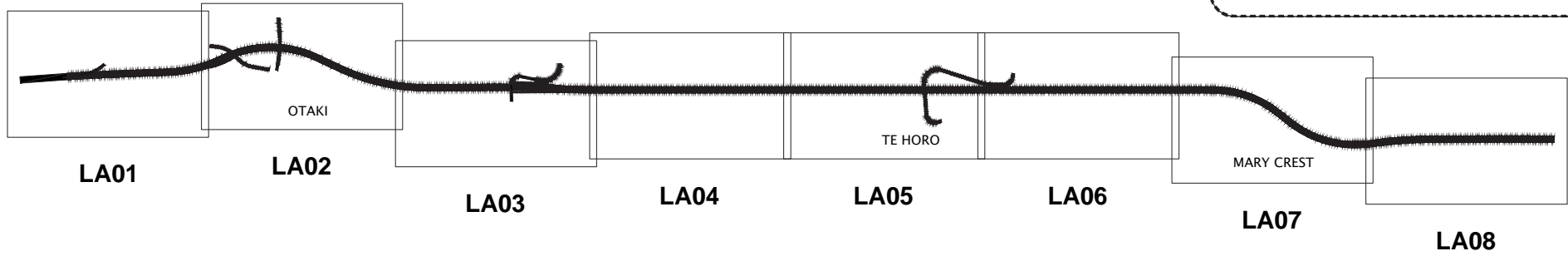




Appendix A.
Landscape drawings (for consenting)

Please Note: For A3 versions of these drawings to scale, please refer to the drawing set in the AEE report.



LEGEND FOR SHEETS LA01-LA08

- | | | | |
|---|---|---|--|
|  | WATERWAYS |  | EXISTING LOCAL ACCESS WAYS OR WALKING/CYCLING PATHS |
|  | PROPOSED STORMWATER BASINS |  | PROPOSED SHARED PATH (PART OF PEKAPEKA TO OTAKI PROJECT) |
|  | EXISTING VEGETATION TO BE RETAINED |  | PROPOSED LOW BUNDING |
|  | PROPOSED NATIVE SCREEN PLANTING OF VARIED HEIGHTS |  | PROPOSED FENCE FOR VISUAL SCREENING |
|  | PROPOSED GRASS | | |
|  | PROPOSED LOW GROWING OR AMENITY PLANTING | | |
|  | PROPOSED VEGETATED SWALE | | |
|  | PROPOSED RIPARIAN OR STREAMSIDE PLANTING | | |
|  | PROPOSED WETLAND PLANTING | | |

Snapshot of Landscape Drawing 5/2664/1/6504 LA00, not to scale

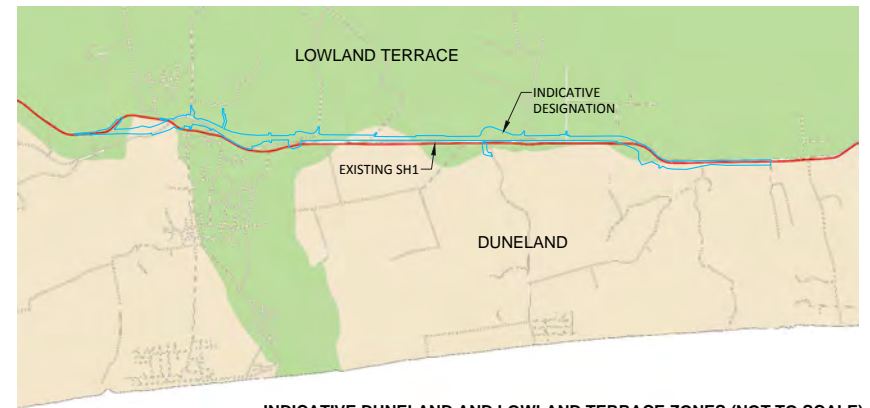
IN LINE WITH THE PLANT RECOMMENDATIONS FOR THESE AREAS IN 'WELLINGTON REGIONAL NATIVE PLANT GUIDE,' BY GREATER WELLINGTON REGIONAL COUNCIL (2010), OUR AREAS MARKED AS DUNELAND AND LOWLAND TERRACE ZONES MAY INCLUDE THE FOLLOWING PLANT SPECIES:

INDICATIVE PROPOSED PLANT SPECIES FOR SHEETS LA01-LA08		
DUNELAND ZONE	LOWLAND TERRACE ZONE	RIPARIAN, WETLAND AND/OR SWALE
TREES AND SHRUBS:	TREES AND SHRUBS:	TREES AND SHRUBS (NOT TO BE USED IN SWALES):
<i>Cordyline australis</i> , cabbage tree	<i>Cordyline australis</i> , cabbage tree	<i>Cordyline australis</i> , cabbage tree
<i>Cordyline banksii</i> , forest cabbage tree	<i>Coprosma acerosa</i> , sand coprosma	<i>Cordyline banksii</i> , forest cabbage tree
<i>Dacrycarpus dacrydioides</i> , kahikatea	<i>Coprosma rhamnoides</i>	<i>Cortaderia fulvida</i> , toetoe
<i>Dacrydium cupressinum</i> , rimu	<i>Cortaderia fulvida</i> , toetoe	<i>Cortaderia toetoe</i> , toetoe
<i>Dysoxylum spectabile</i> , kohekohe	<i>Cortaderia toetoe</i> , toetoe	<i>Dacrycarpus dacrydioides</i> , kahikatea
<i>Elaeocarpus dentatus</i> , hinau	<i>Dadonea viscosa</i> , akeake	<i>Hebe stricta</i> var. <i>atkinsonii</i> , koromiko
<i>Hedycarya arborea</i> , pigeonwood	<i>Dysoxylum spectabile</i> , kohekohe	<i>Kunzea ericoides</i> , kanuka
<i>Knightia excelsa</i> , rewarewa	<i>Entelea arborescens</i> , whau	<i>Leptospermum scoparium</i> , manuka
<i>Leptospermum scoparium</i> , manuka	<i>Kunzea ericoides</i> , kanuka	<i>Melicytus ramiflorus</i> , mahoe
<i>Lophomyrtus bullata</i> , ramarama	<i>Leptospermum scoparium</i> , manuka	<i>Pittosporum tenuifolium</i> , kohuhu
<i>Melicope ternata</i> , wharangi	<i>Melicytus ramiflorus</i> , mahoe	<i>Pseudopanax arboreus</i> , five-finger
<i>Metrosideros robusta</i> , northern rata	<i>Myrsine australis</i> , mapou	GRASSES AND LOW GROWING PLANTS:
<i>Neomyrtus pedunculata</i> , rohutu	<i>Olearia paniculata</i> , akiraho	<i>Carex secta</i>
<i>Olearia rani</i> , heketara	<i>Olearia solandri</i> , coastal tree daisy	<i>Carex virgata</i>
<i>Pittosporum eugeniaoides</i> , lemonwood	<i>Phormium tenax</i> , harakeke	<i>Juncus maritimus</i> , sea rush
<i>Pittosporum tenuifolium</i> , kohuhu	<i>Plagianthus divaricatus</i> , salt-marsh ribbonwood	<i>Juncus pallidus</i>
<i>Podocarpus totara</i> , totara	<i>Pseudopanax crassifolius</i> , lancewood	<i>Leptocarpus similis</i> , jointed wire rush
<i>Prumnopitys taxifolia</i> , matai	GRASSES AND LOW GROWING PLANTS:	<i>Phormium tenax</i> , harakeke
<i>Pseudopanax arboreus</i> , five-finger	<i>Carex secta</i>	<i>Schoenoplectus validus</i> , lake clubrush
<i>Rhabdothermus solandri</i> , NZ gloxinia	<i>Carex pumila</i> , sand sedge	<i>Typhus orientalis</i> , raupo
<i>Streblus banksii</i> , large-leaved milk tree	<i>Carex virgata</i>	
<i>Streblus heterophyllus</i> , small leaved milk tree	<i>Desmoschoenus spiralis</i> , pingao	
GRASSES AND LOW GROWING PLANTS:	<i>Hebe stricta</i> var. <i>atkinsonii</i> , koromiko	
<i>Carex testacea</i> , speckled sedge	<i>Leptocarpus similis</i> , jointed wire rush	
<i>Hebe stricta</i> var. <i>atkinsonii</i> , koromiko	<i>Libertia peregrinans</i> , NZ iris	
<i>Helichrysum aggregatum</i> , niniao	<i>Pimelea prostrata</i>	
<i>Poa cita</i> , silver tussock	<i>Spinifex sericeus</i> , silvery sand grass	

NOTE: FINAL PLANT SPECIES AND DENSITIES/SPACINGS SPECIFIED WILL BE CONFIRMED WITH INPUTS FROM KDCD AND OTHER PROJECT SPECIALISTS (SUCH AS ECOLOGY AND HYDROLOGY) DURING FUTURE DESIGN STAGES.

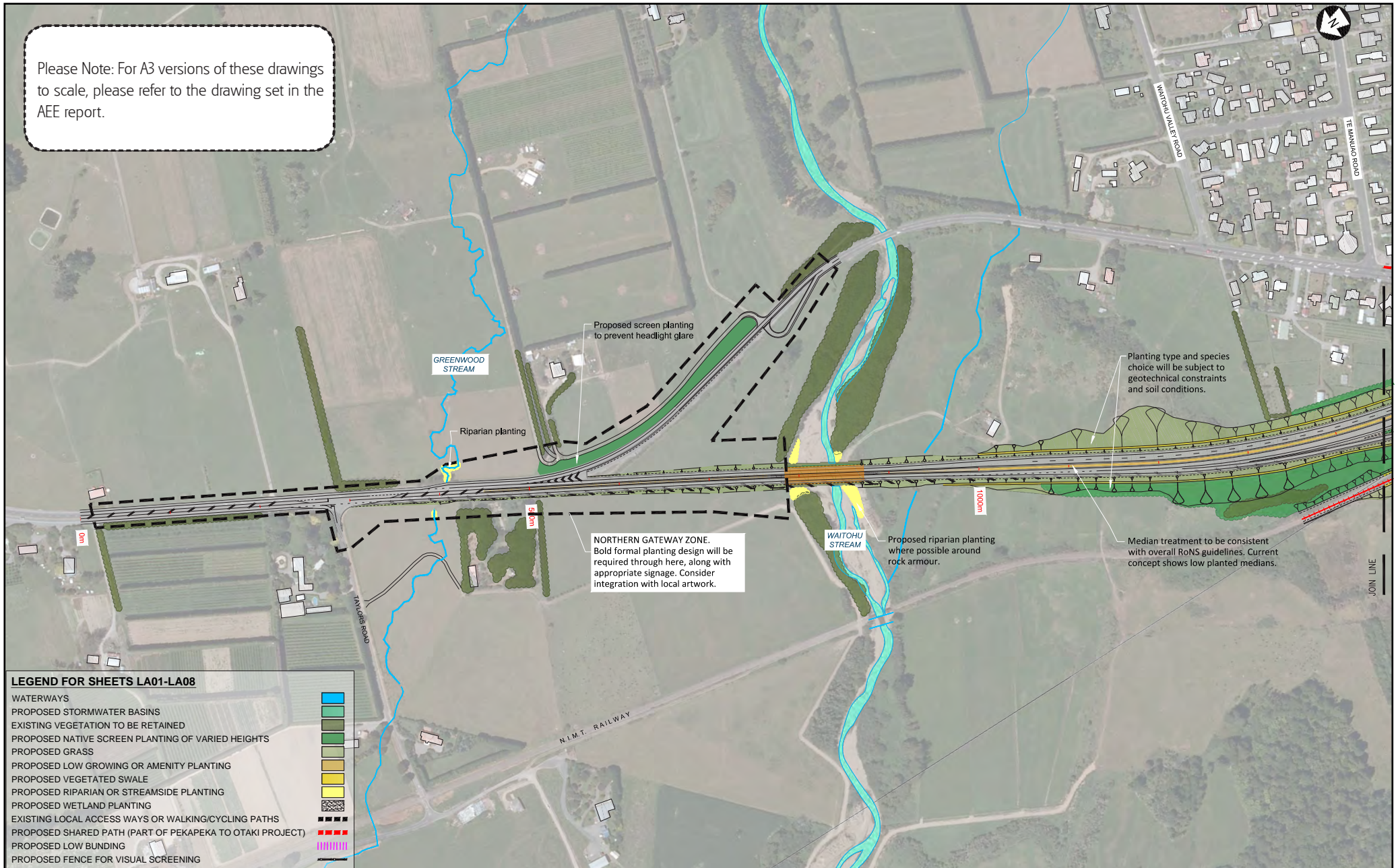
INDICATIVE PROPOSED PLANT DENSITIES/SPACINGS ARE AS FOLLOWS:

- TREES AT 3-5m SPACINGS
- SHRUBS AT 1-3m SPACINGS
- GRASSES AND LOW GROWING PLANTS AT 1-2m SPACINGS



INDICATIVE DUNELAND AND LOWLAND TERRACE ZONES (NOT TO SCALE)

Please Note: For A3 versions of these drawings to scale, please refer to the drawing set in the AEE report.

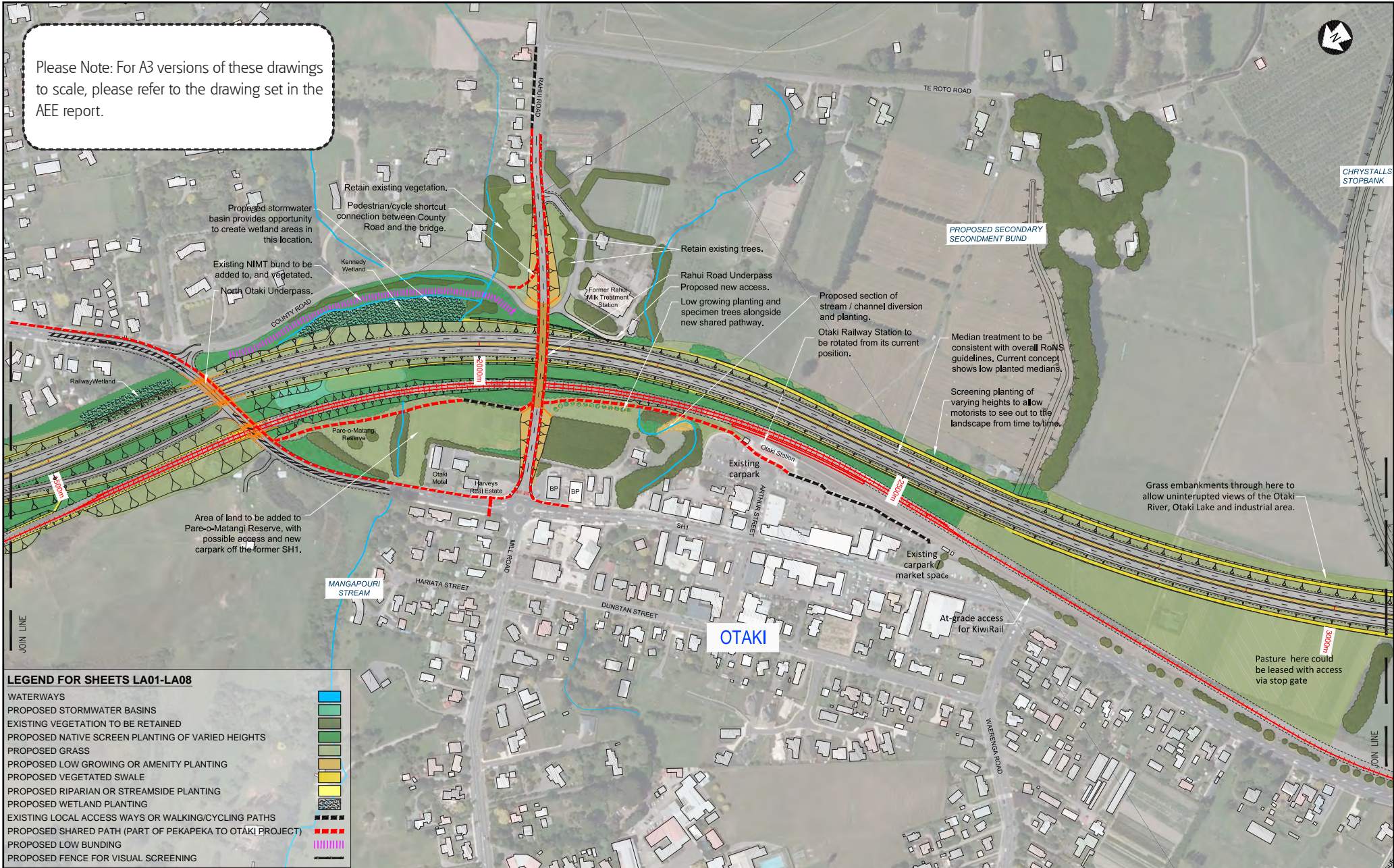


LEGEND FOR SHEETS LA01-LA08

- WATERWAYS
- PROPOSED STORMWATER BASINS
- EXISTING VEGETATION TO BE RETAINED
- PROPOSED NATIVE SCREEN PLANTING OF VARIED HEIGHTS
- PROPOSED GRASS
- PROPOSED LOW GROWING OR AMENITY PLANTING
- PROPOSED VEGETATED SWALE
- PROPOSED RIPARIAN OR STREAMSIDE PLANTING
- PROPOSED WETLAND PLANTING
- EXISTING LOCAL ACCESS WAYS OR WALKING/CYCLING PATHS
- PROPOSED SHARED PATH (PART OF PEKAPEKA TO OTAKI PROJECT)
- PROPOSED LOW BUNDING
- PROPOSED FENCE FOR VISUAL SCREENING



Snapshot of Landscape Drawing 5/2664/1/6504 LA01, not to scale

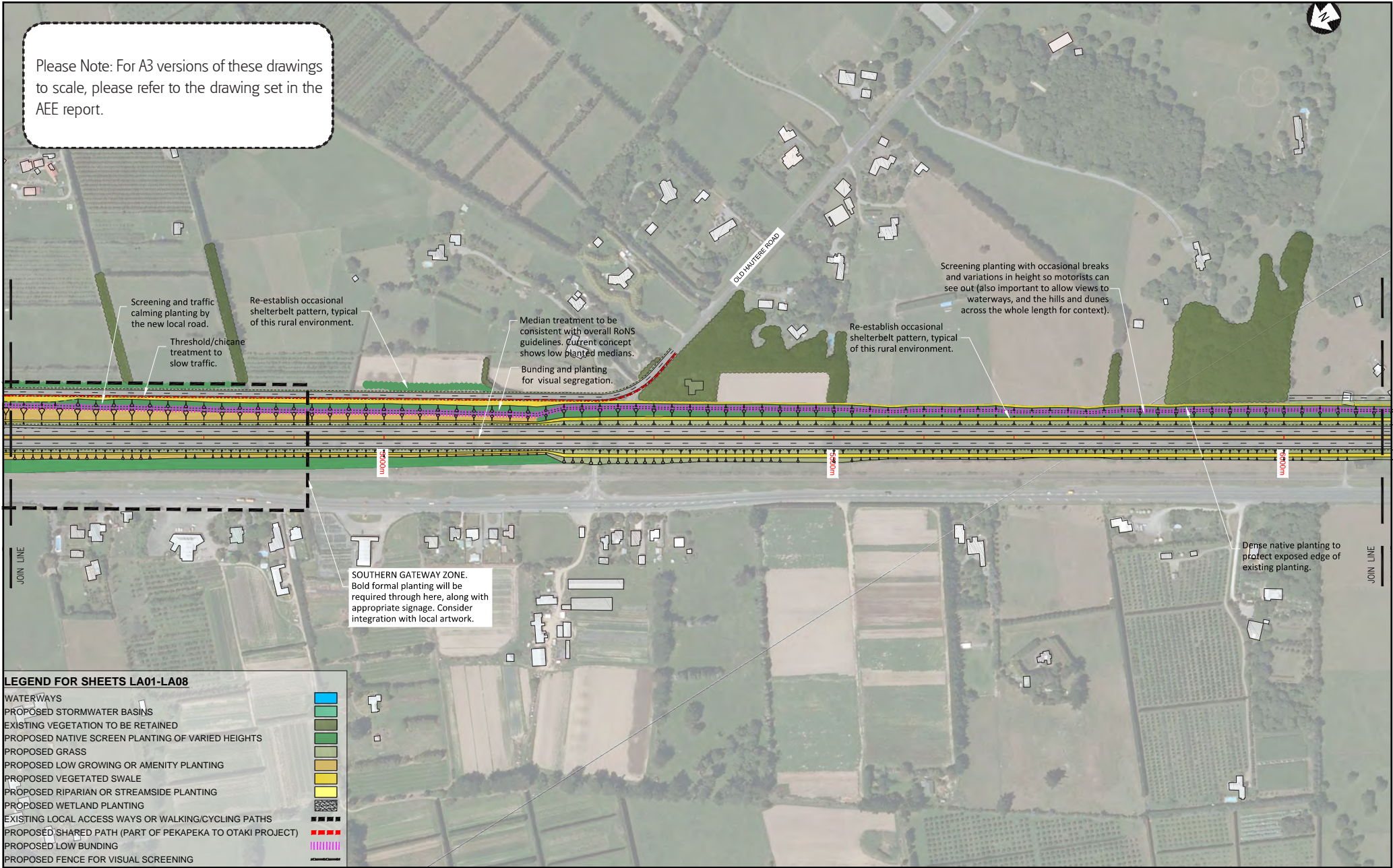


Snapshot of Landscape Drawing 5/2664/1/6504 LA02, not to scale

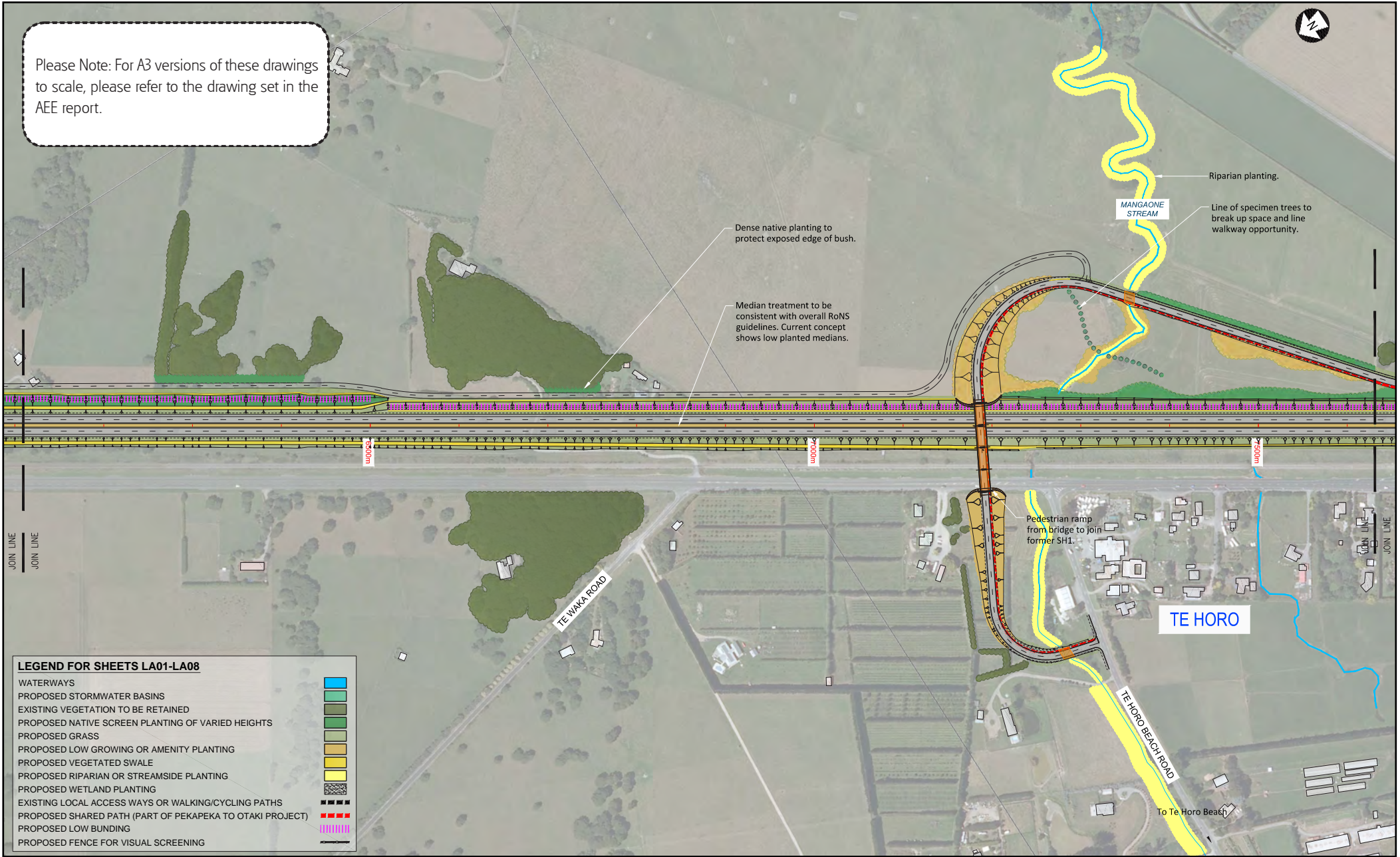


Please Note: For A3 versions of these drawings to scale, please refer to the drawing set in the AEE report.

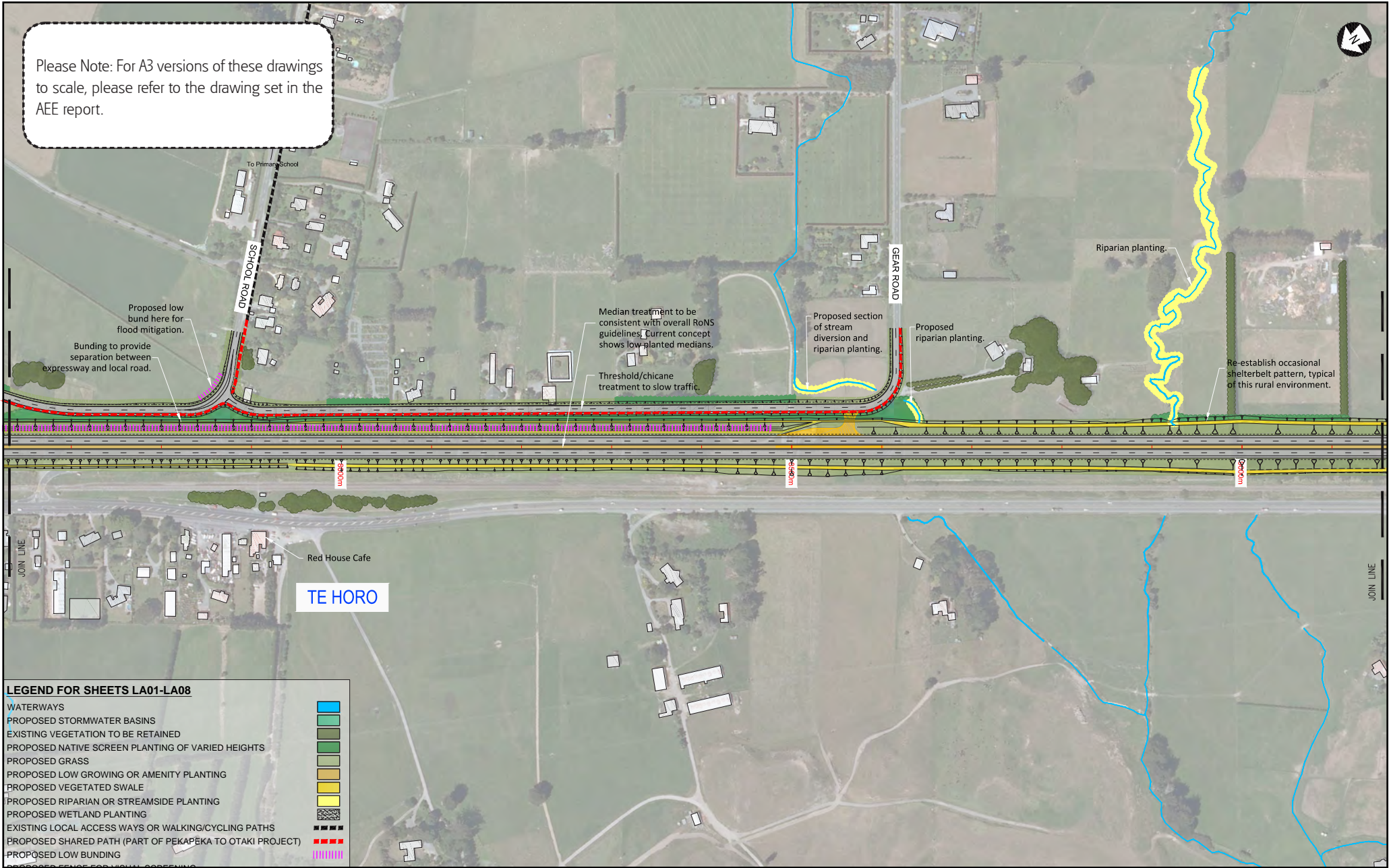
Snapshot of Landscape Drawing 5/2664/1/6504 LA03, not to scale



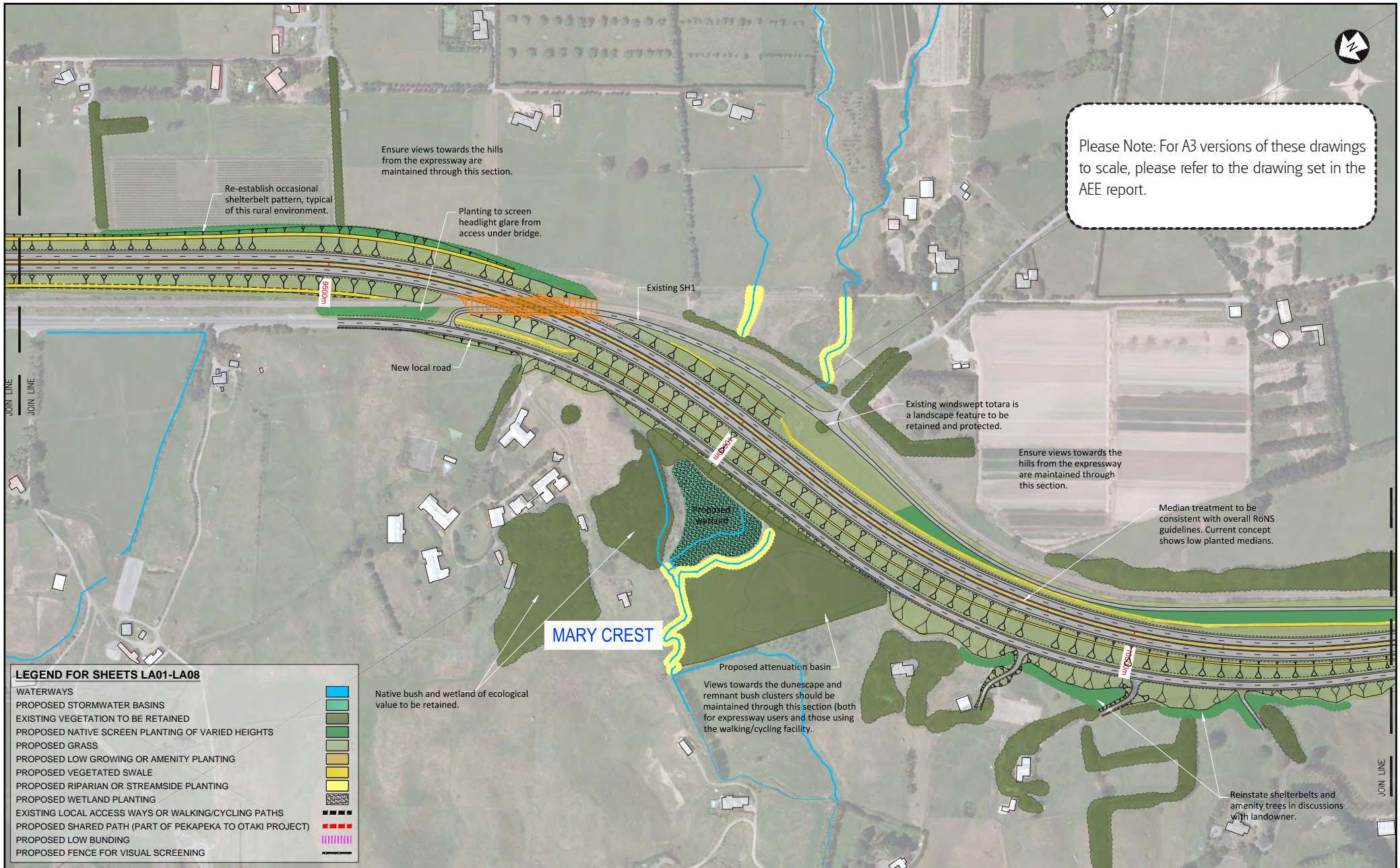
Snapshot of Landscape Drawing 5/2664/1/6504 LA04, not to scale



Snapshot of Landscape Drawing 5/2664/1/6504 LA05, not to scale

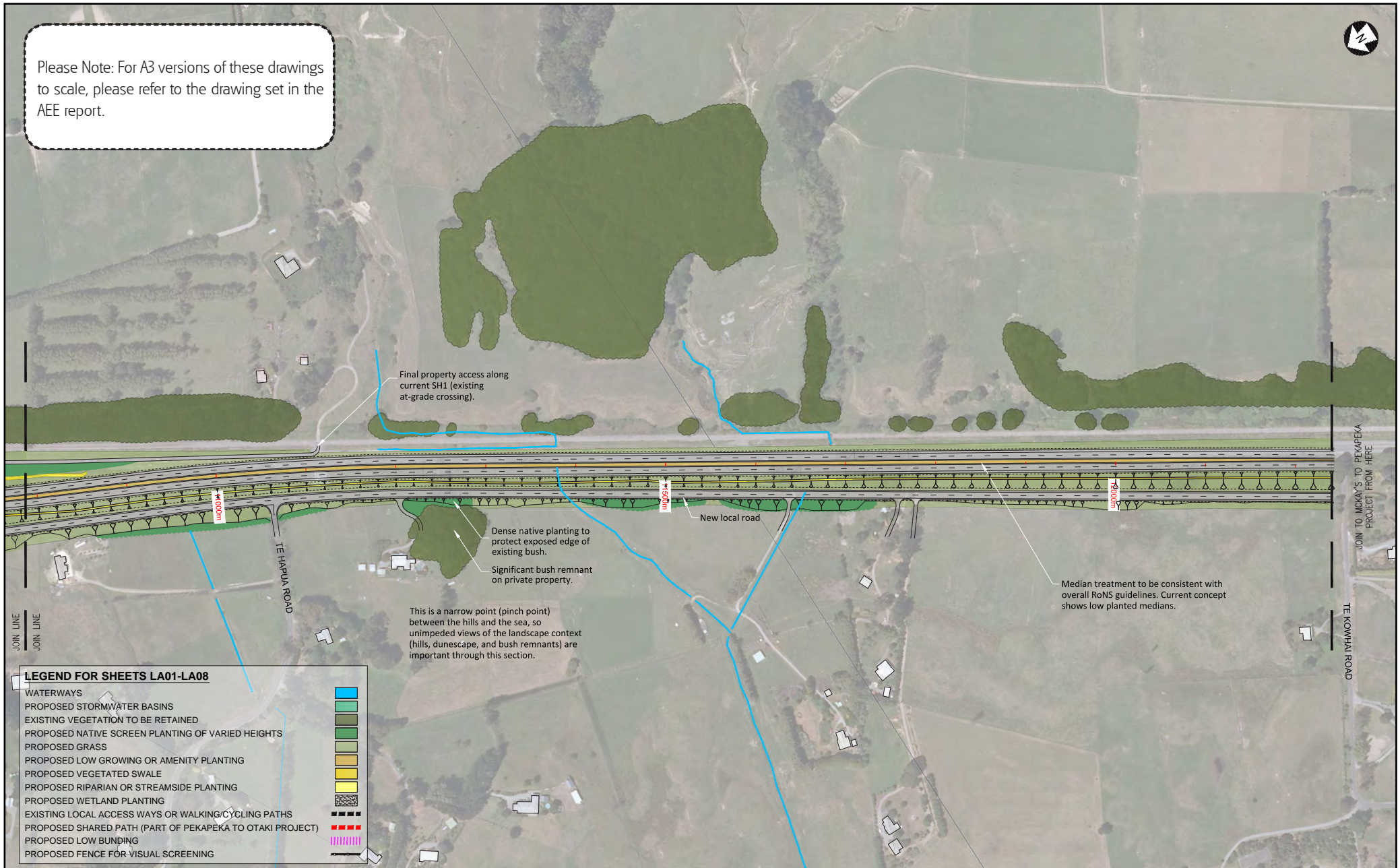


Snapshot of Landscape Drawing 5/2664/1/6504 LA06, not to scale



Snapshot of Landscape Drawing 5/2664/1/6504 LA07, not to scale

Please Note: For A3 versions of these drawings to scale, please refer to the drawing set in the AEE report.



LEGEND FOR SHEETS LA01-LA08

WATERWAYS	
PROPOSED STORMWATER BASINS	
EXISTING VEGETATION TO BE RETAINED	
PROPOSED NATIVE SCREEN PLANTING OF VARIED HEIGHTS	
PROPOSED GRASS	
PROPOSED LOW GROWING OR AMENITY PLANTING	
PROPOSED VEGETATED SWALE	
PROPOSED RIPARIAN OR STREAMSIDE PLANTING	
PROPOSED WETLAND PLANTING	
EXISTING LOCAL ACCESS WAYS OR WALKING/CYCLING PATHS	
PROPOSED SHARED PATH (PART OF PEKAPEKA TO OTAKI PROJECT)	
PROPOSED LOW BUNDING	
PROPOSED FENCE FOR VISUAL SCREENING	

This is a narrow point (pinch point) between the hills and the sea, so unimpeded views of the landscape context (hills, dunescape, and bush remnants) are important through this section.

JOIN TO MCKAY'S TO PEKAPEKA PROJECT FROM HERE

TE KOWHAI ROAD

Snapshot of Landscape Drawing 5/2664/1/6504 LA08, not to scale