




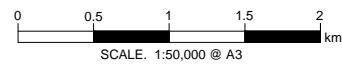




LEGEND

-  STATE HIGHWAYS
-  TERRITORIAL AUTHORITY BOUNDARIES
-  COUNCIL LABELS
-  PROPOSED MAIN EXPRESSWAY ALIGNMENT AND LINK ROADS
-  SUBURBS AND TOWNS

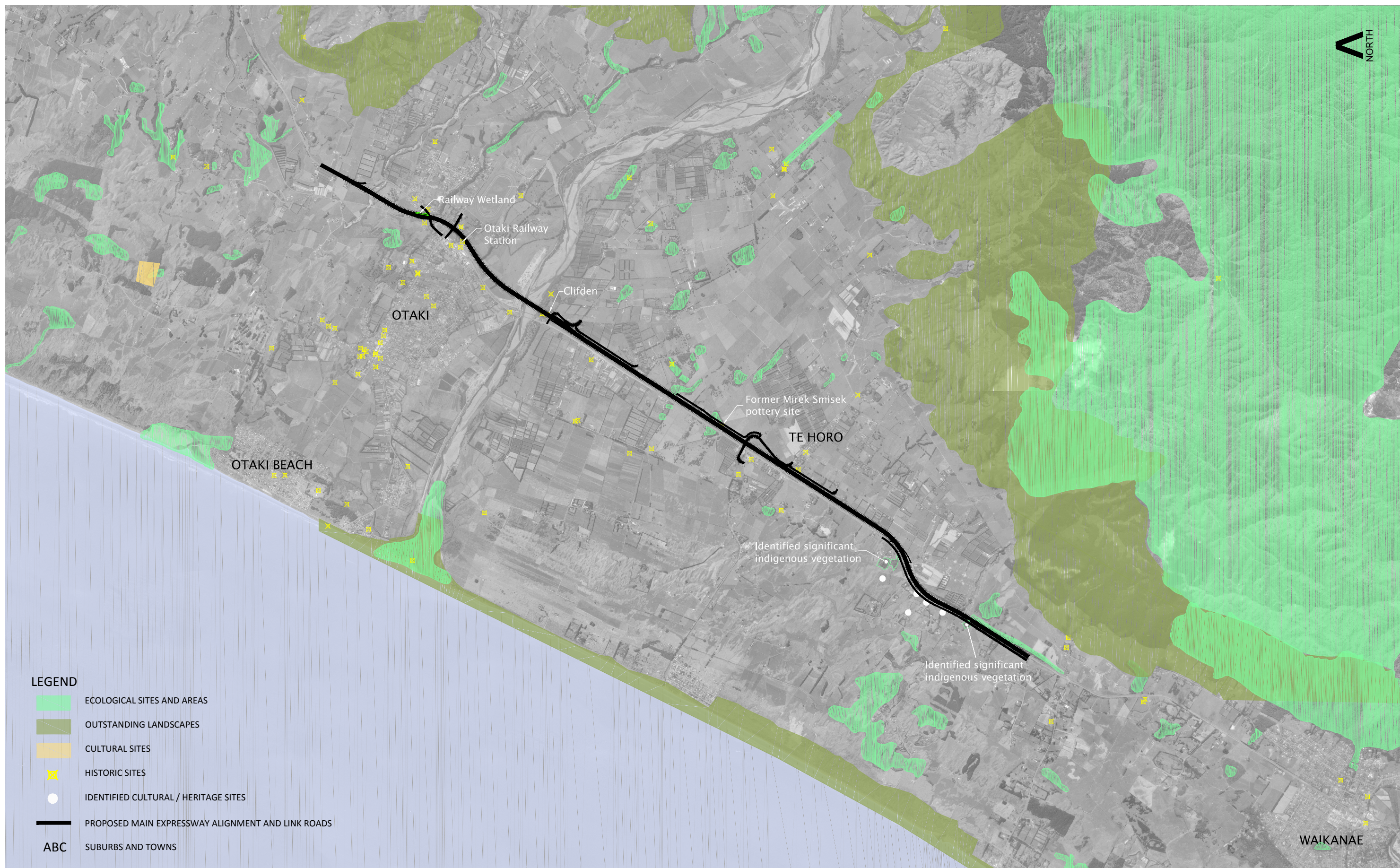


Revision	Amendment	Approved	Revision Date
R1	ISSUED FOR CONSENT	A.N.	MAR 2013



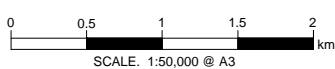
Drawn	Designed	Approved	Revision Date
CAD	MAE	T.COULMAN	10/2012
Project No.	Scale		
5C1814.00	1:25,000(A1), 1:50,000(A3)		

Project	
NEW ZEALAND TRANSPORT AGENCY PEKA PEKA TO NORTH OTAKI EXPRESSWAY FOR CONSENTING	
Sheet	
Site Layout Plans Territorial Authority Boundaries	
Drawing No.	Sheet No. Revision
5/2664/1/6504	GA01 R1



LEGEND

- ECOLOGICAL SITES AND AREAS
- OUTSTANDING LANDSCAPES
- CULTURAL SITES
- HISTORIC SITES
- IDENTIFIED CULTURAL / HERITAGE SITES
- PROPOSED MAIN EXPRESSWAY ALIGNMENT AND LINK ROADS
- ABC** SUBURBS AND TOWNS



- NOTES:**
1. HISTORIC SITES - RECEIVED FROM KCDC 09/2010 AND KCDC 1999 DISTRICT PLAN PART 1 HERITAGE REGISTER.
 2. ECOLOGICAL SITES & AREAS AND OUTSTANDING LANDSCAPES SOURCED FROM KCDC 09/2010.
 3. ADDITIONAL CULTURAL, ECOLOGICAL AND HERITAGE SITES ADDED DURING SCHEME ASSESSMENT PHASE.

Revision	Amendment	Approved	Revision Date
R1	ISSUED FOR CONSENT	A.N.	MAR 2013



Drawn	Designed	Approved	Revision Date
CAD	MAE	T.COULMAN	10/2012

Project No.	Scale
5C1814.00	1:25,000(A1), 1:50,000(A3)

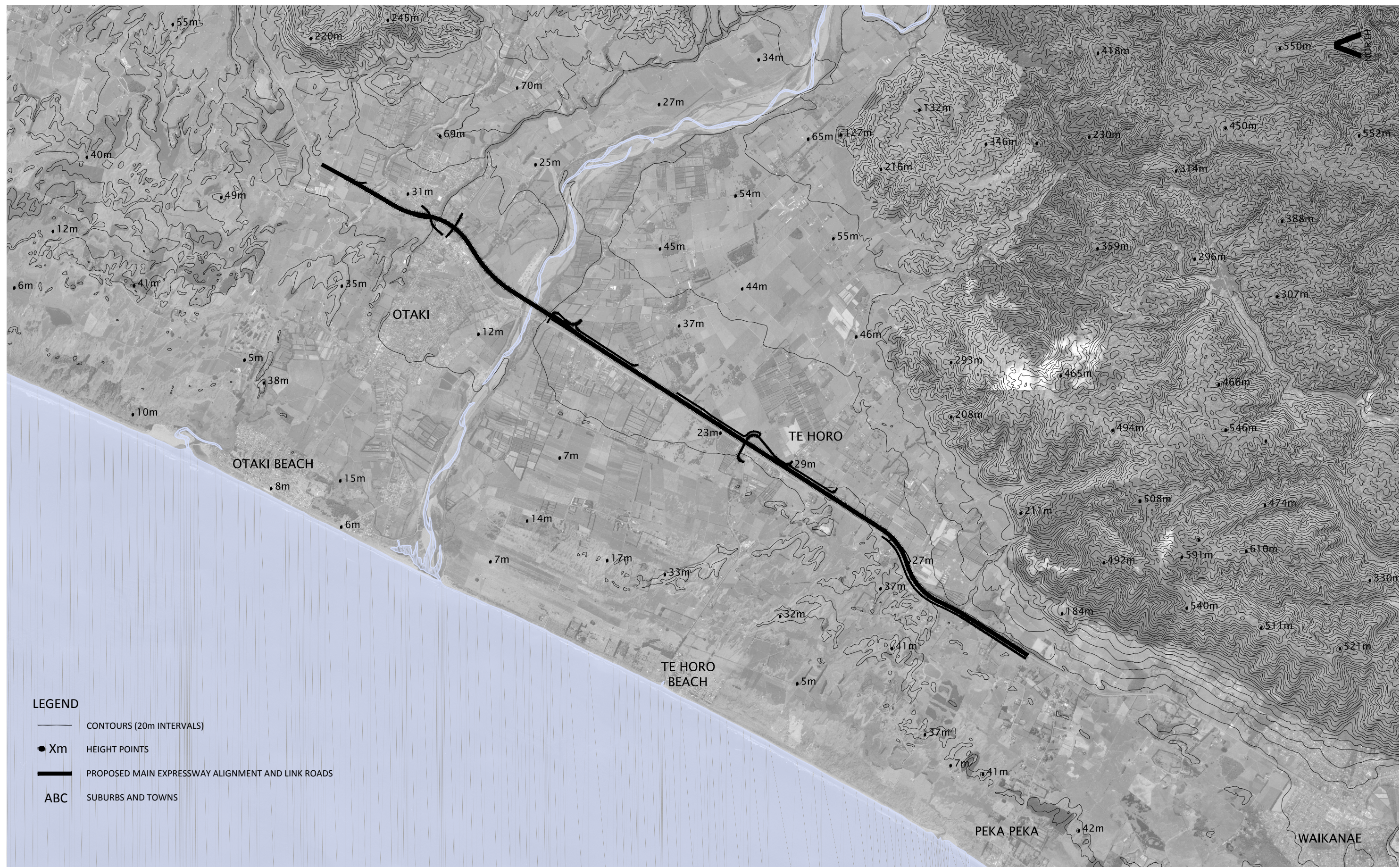
Project

**NEW ZEALAND TRANSPORT AGENCY
PEKA PEKA TO NORTH OTAKI EXPRESSWAY
FOR CONSENTING**

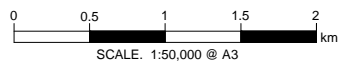
Sheet

**Site Layout Plans
Constraints Map**

Drawing No.	Sheet No.	Revision
5/2664/1/6504	GA02	R1



- LEGEND**
- CONTOURS (20m INTERVALS)
 - HEIGHT POINTS
 - PROPOSED MAIN EXPRESSWAY ALIGNMENT AND LINK ROADS
 - ABC** SUBURBS AND TOWNS



- NOTES:**
1. CO-ORDINATES ARE IN TERMS OF NZTM
 2. LEVELS ARE TO NZ GEODETIC DATUM 2000

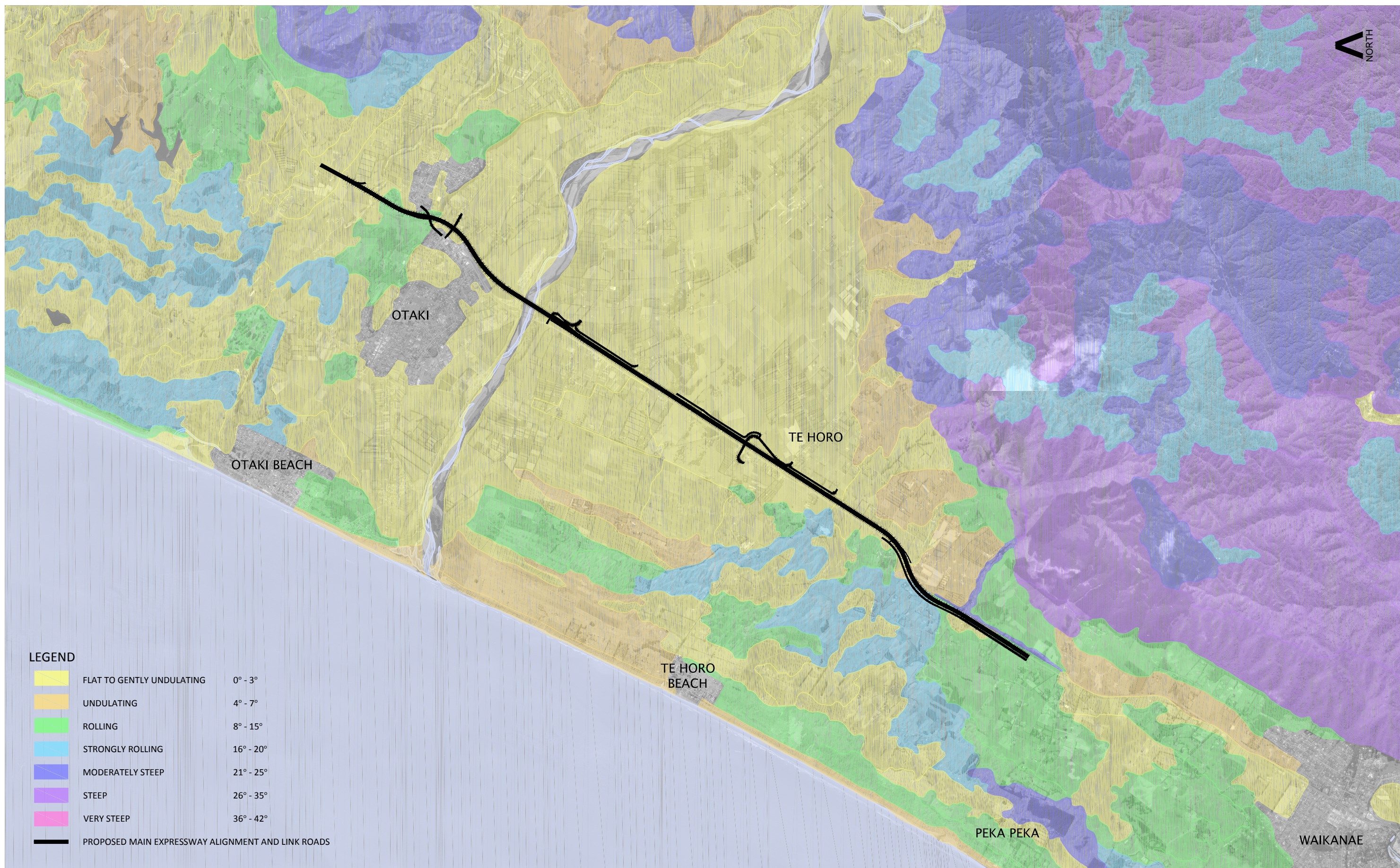
Revision	Amendment	Approved	Revision Date
R1	ISSUED FOR CONSENT	A.N.	MAR 2013



Drawn	Designed	Approved	Revision Date
CAD	MAE	T.COULMAN	10/2012

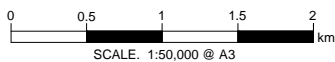
Project No.	Scale
5C1814.00	1:25,000(A1), 1:50,000(A3)

Project			
NEW ZEALAND TRANSPORT AGENCY PEKA PEKA TO NORTH OTAKI EXPRESSWAY FOR CONSENTING			
Sheet			
Site Layout Plans Landform			
Drawing No.	Sheet No.	Revision	
5/2664/1/6504	GA03	R1	



LEGEND

	FLAT TO GENTLY UNDULATING	0° - 3°
	UNDULATING	4° - 7°
	ROLLING	8° - 15°
	STRONGLY ROLLING	16° - 20°
	MODERATELY STEEP	21° - 25°
	STEEP	26° - 35°
	VERY STEEP	36° - 42°
	PROPOSED MAIN EXPRESSWAY ALIGNMENT AND LINK ROADS	

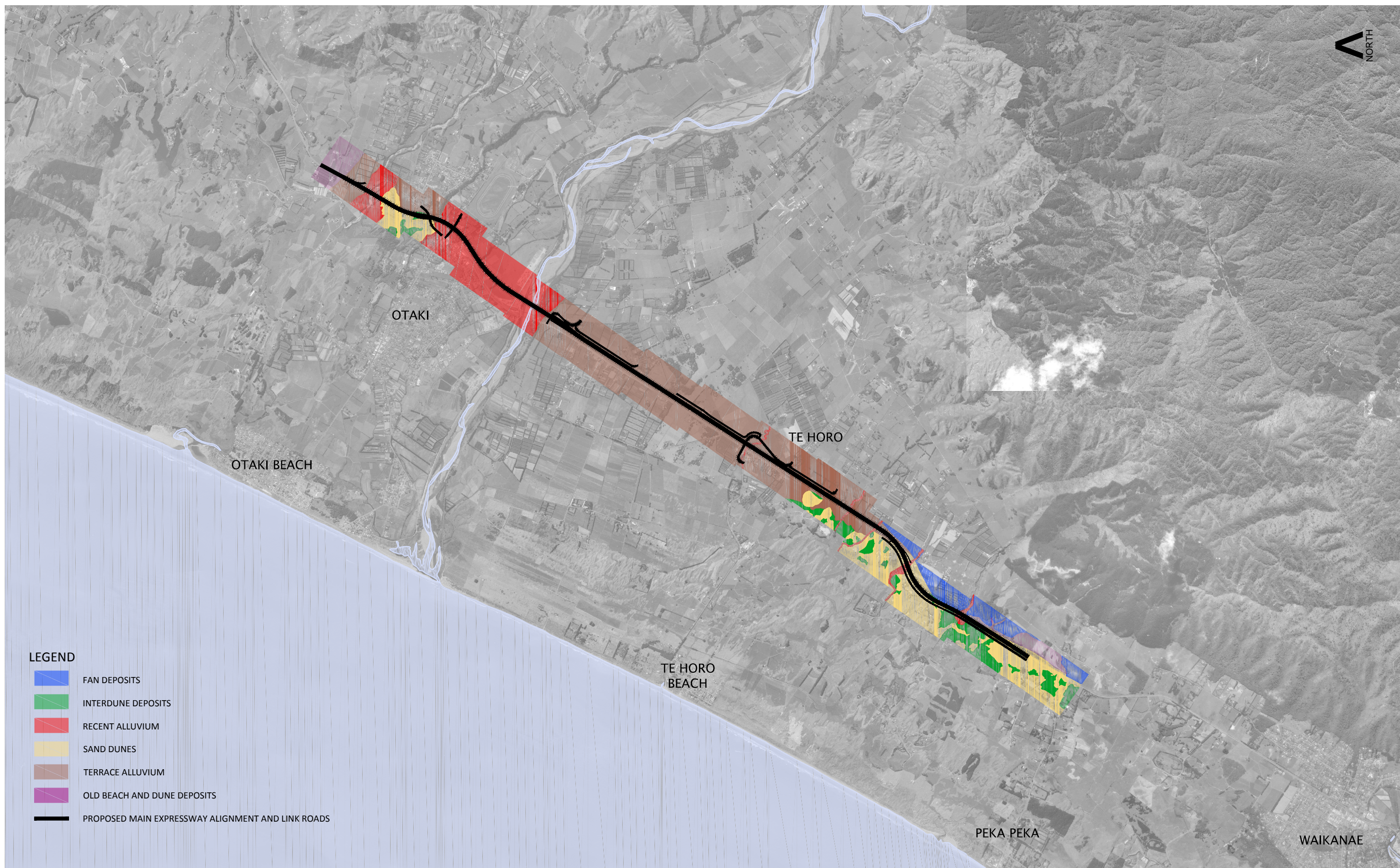


Revision	Amendment	Approved	Revision Date
R1	ISSUED FOR CONSENT	A.N.	MAR 2013

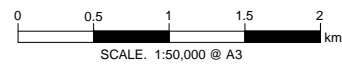


Drawn	Designed	Approved	Revision Date
CAD	MAE	T.COULMAN	10/2012
Project No.	Scale		Revision No.
5C1814.00	1:25,000(A1), 1:50,000(A3)		5/2664/1/6504

Project	
NEW ZEALAND TRANSPORT AGENCY PEKA PEKA TO NORTH OTAKI EXPRESSWAY FOR CONSENTING	
Sheet	
Site Layout Plans Slope	
Drawing No.	Sheet No. Revision
5/2664/1/6504	GA04 R1



- LEGEND**
- FAN DEPOSITS
 - INTERDUNE DEPOSITS
 - RECENT ALLUVIUM
 - SAND DUNES
 - TERRACE ALLUVIUM
 - OLD BEACH AND DUNE DEPOSITS
 - PROPOSED MAIN EXPRESSWAY ALIGNMENT AND LINK ROADS



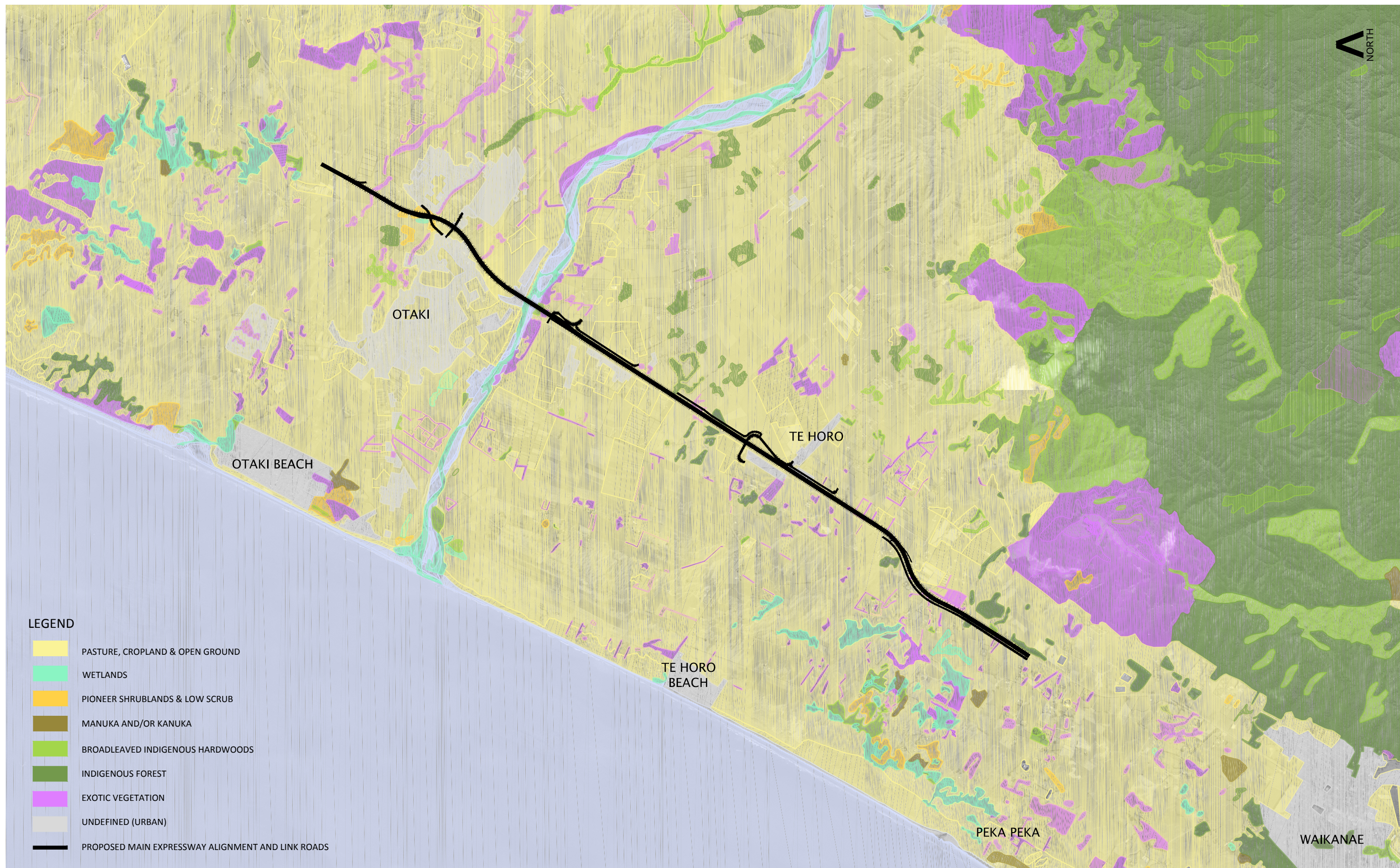
Revision	Amendment	Approved	Revision Date
R1	ISSUED FOR CONSENT	A.N.	MAR 2013



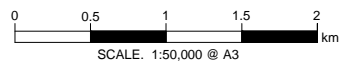
Drawn	Designed	Approved	Revision Date
CAD	MAE	T.COULMAN	10/2012

Project No.	Scale
5C1814.00	1:25,000(A1), 1:50,000(A3)

Project	
NEW ZEALAND TRANSPORT AGENCY PEKA PEKA TO NORTH OTAKI EXPRESSWAY FOR CONSENTING	
Sheet	
Site Layout Plans Geology	
Drawing No.	Sheet No. Revision
5/2664/1/6504	GA05 R1



- LEGEND**
- PASTURE, CROPLAND & OPEN GROUND
 - WETLANDS
 - PIONEER SHRUBLANDS & LOW SCRUB
 - MANUKA AND/OR KANUKA
 - BROADLEAVED INDIGENOUS HARDWOODS
 - INDIGENOUS FOREST
 - EXOTIC VEGETATION
 - UNDEFINED (URBAN)
 - PROPOSED MAIN EXPRESSWAY ALIGNMENT AND LINK ROADS



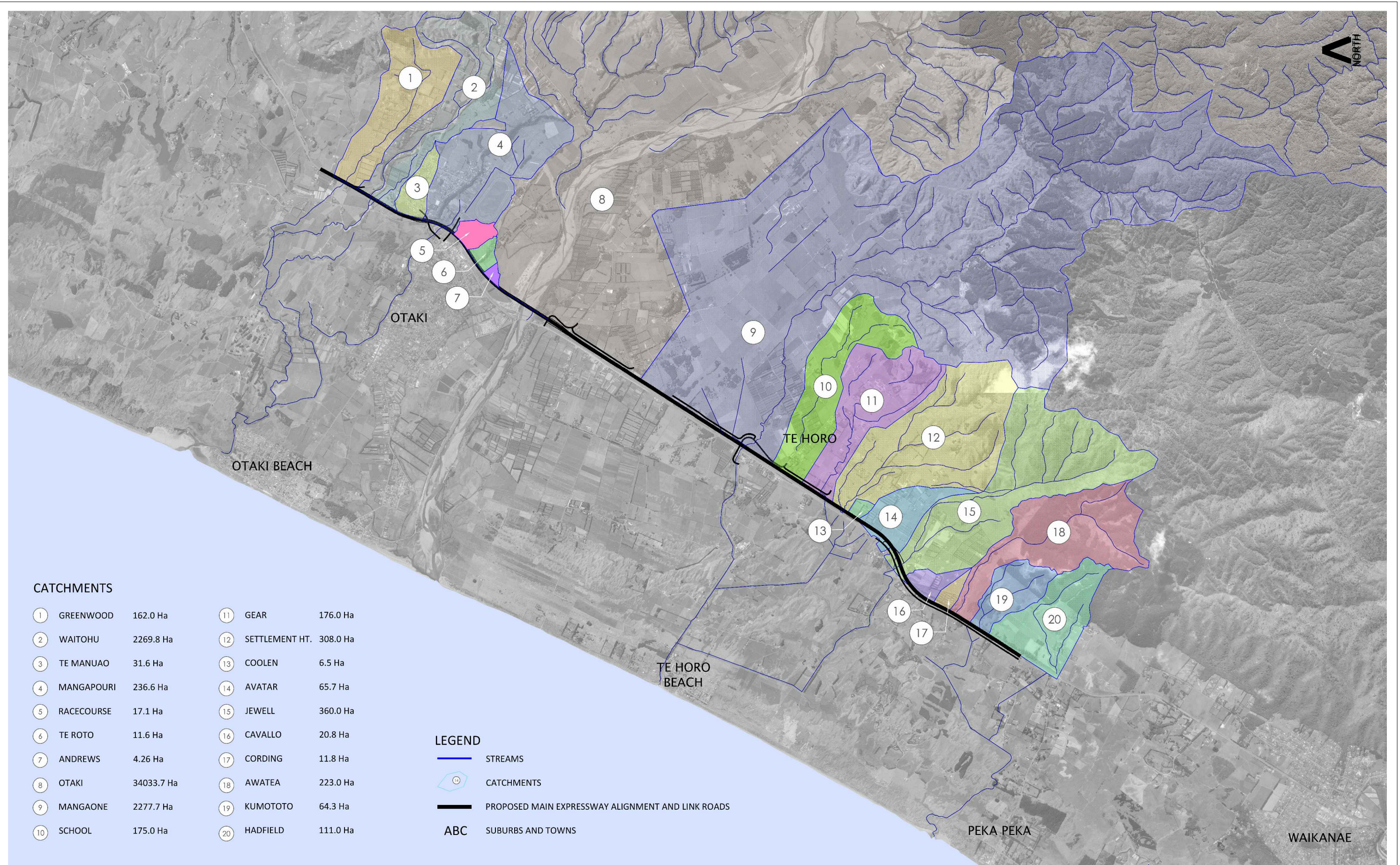
Revision	Amendment	Approved	Revision Date
R1	ISSUED FOR CONSENT	A.N.	MAR 2013



Drawn	Designed	Approved	Revision Date
CAD	MAE	T.COULMAN	10/2012

Project No.	Scale
5C1814.00	1:25,000(A1), 1:50,000(A3)

Project	
NEW ZEALAND TRANSPORT AGENCY PEKA PEKA TO NORTH OTAKI EXPRESSWAY FOR CONSENTING	
Sheet	
Site Layout Plans Current Vegetation Pattern & Landcover	
Drawing No.	Sheet No.
5/2664/1/6504	GA06
Revision	R1

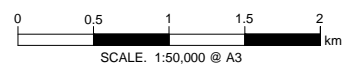


CATCHMENTS

① GREENWOOD	162.0 Ha	⑪ GEAR	176.0 Ha
② WAITOHU	2269.8 Ha	⑫ SETTLEMENT HT.	308.0 Ha
③ TE MANUAO	31.6 Ha	⑬ COOLEN	6.5 Ha
④ MANGAPOURI	236.6 Ha	⑭ AVATAR	65.7 Ha
⑤ RACECOURSE	17.1 Ha	⑮ JEWELL	360.0 Ha
⑥ TE ROTO	11.6 Ha	⑯ CAVALLO	20.8 Ha
⑦ ANDREWS	4.26 Ha	⑰ CORDING	11.8 Ha
⑧ OTAKI	34033.7 Ha	⑱ AWATEA	223.0 Ha
⑨ MANGAONE	2277.7 Ha	⑲ KUMOTOTO	64.3 Ha
⑩ SCHOOL	175.0 Ha	⑳ HADFIELD	111.0 Ha

LEGEND

- STREAMS
- CATCHMENTS
- PROPOSED MAIN EXPRESSWAY ALIGNMENT AND LINK ROADS
- ABC** SUBURBS AND TOWNS



Revision	Amendment	Approved	Revision Date
R1	ISSUED FOR CONSENT	A.N.	MAR 2013



Drawn	Designed	Approved	Revision Date
CAD	MAE	T.COULMAN	10/2012

Project No.	Scale
5C1814.00	1:25,000(A1), 1:50,000(A3)

Project
**NEW ZEALAND TRANSPORT AGENCY
 PEKA PEKA TO NORTH OTAKI EXPRESSWAY
 FOR CONSENTING**

Sheet
**Site Layout Plans
 Stream Catchments**

Drawing No.	Sheet No.	Revision
5/2664/1/6504	GA07	R1