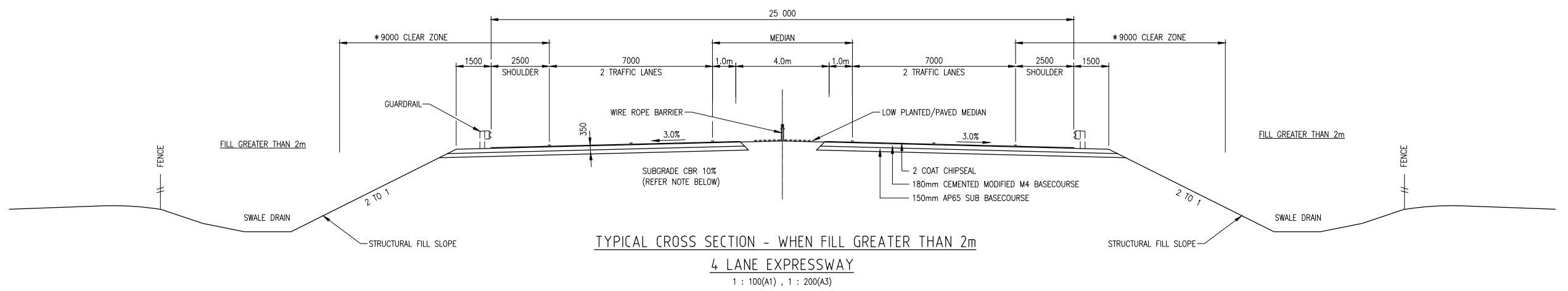
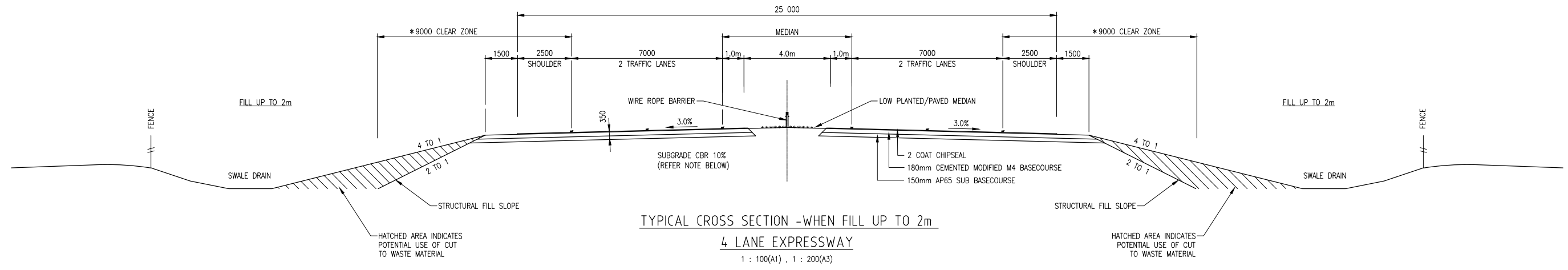
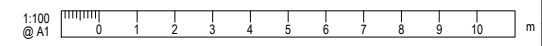


300mm  
200  
100  
50  
0 10mm



- NOTES:**
1. INCLUDE IMPROVEMENT LAYER OF 160mm GRANULAR MATERIAL IF IN SITU SUBGRADE CBR IS 5 - 8%.
  2. OPGA (LOW NOISE) SURFACING CURRENTLY ASSUMED TO BE PROVIDED BETWEEN THE FOLLOWING CHAINAGES : 1200 - 3100 AND 4300 - 9700 EXACT EXTENT TO BE CONFIRMED THROUGH AEE PROCESS.



Revision	Amendment	Approved	Revision Date

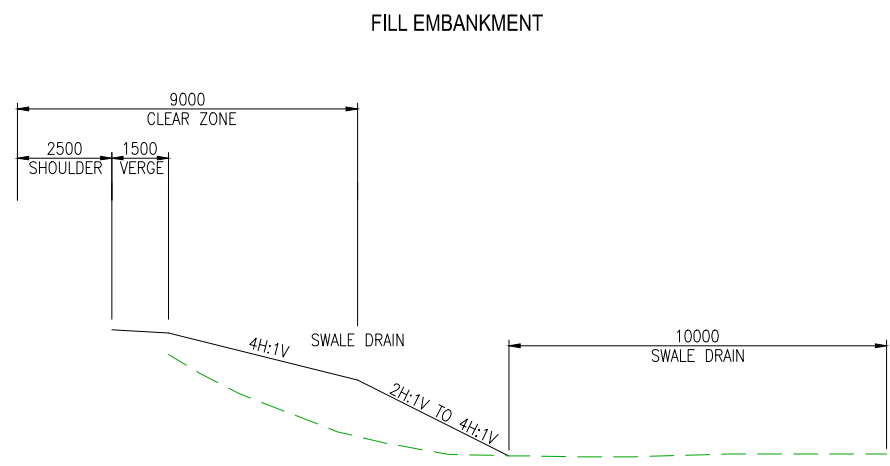
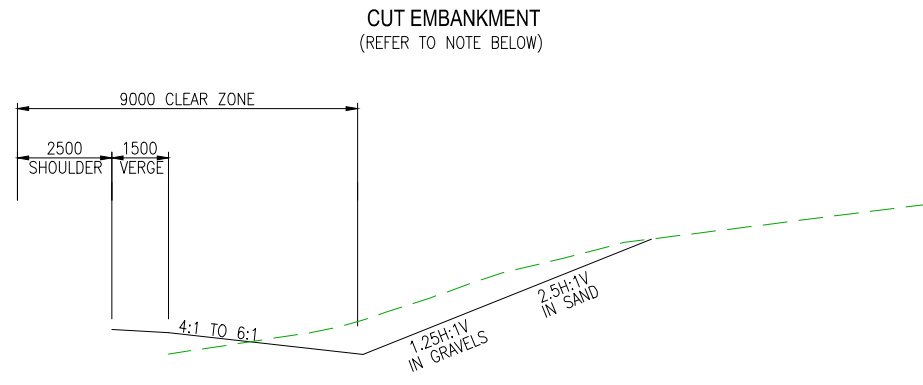


Drawn	Designed	Approved	Revision Date
CAD	MAE	T.COULMAN	09/2011
Project No. 5C1814.00		Scale 1:100(A1), 1:200(A3)	

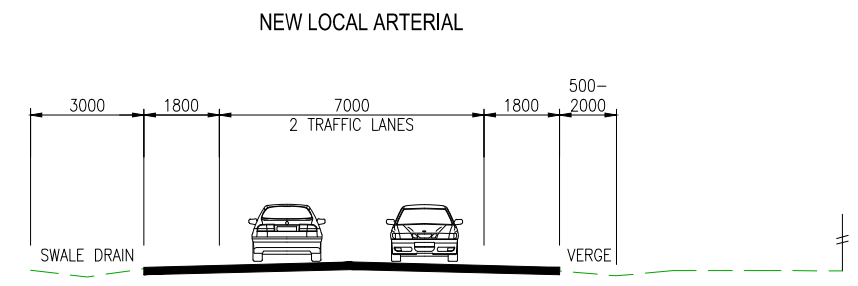
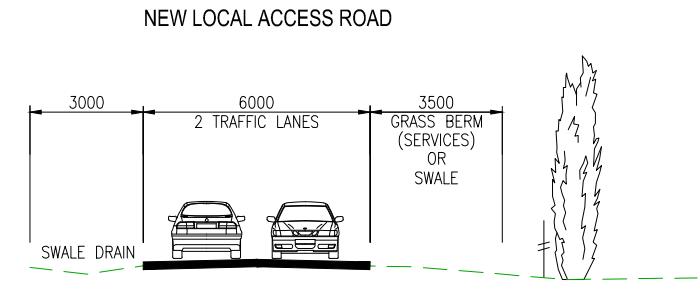
Project	
NEW ZEALAND TRANSPORT AGENCY PEKA PEKA TO NORTH OTAKI EXPRESSWAY FOR CONSENTING	
Sheet	
TYPICAL CROSS SECTION SHEET 1 OF 2	
Sheet No.	Revision
5/2664/1/6504	GM09 R0

300 mm  
200  
100  
50  
10 mm  
0

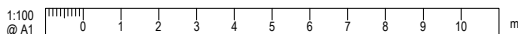
PRELIMINARY EARTHWORKS CROSS SECTIONS



TYPICAL LOCAL ROAD CROSS SECTIONS



**NOTES:**  
1. IN LOCATIONS WITH SWALES A FLAT INVERT WOULD BE INCLUDED.



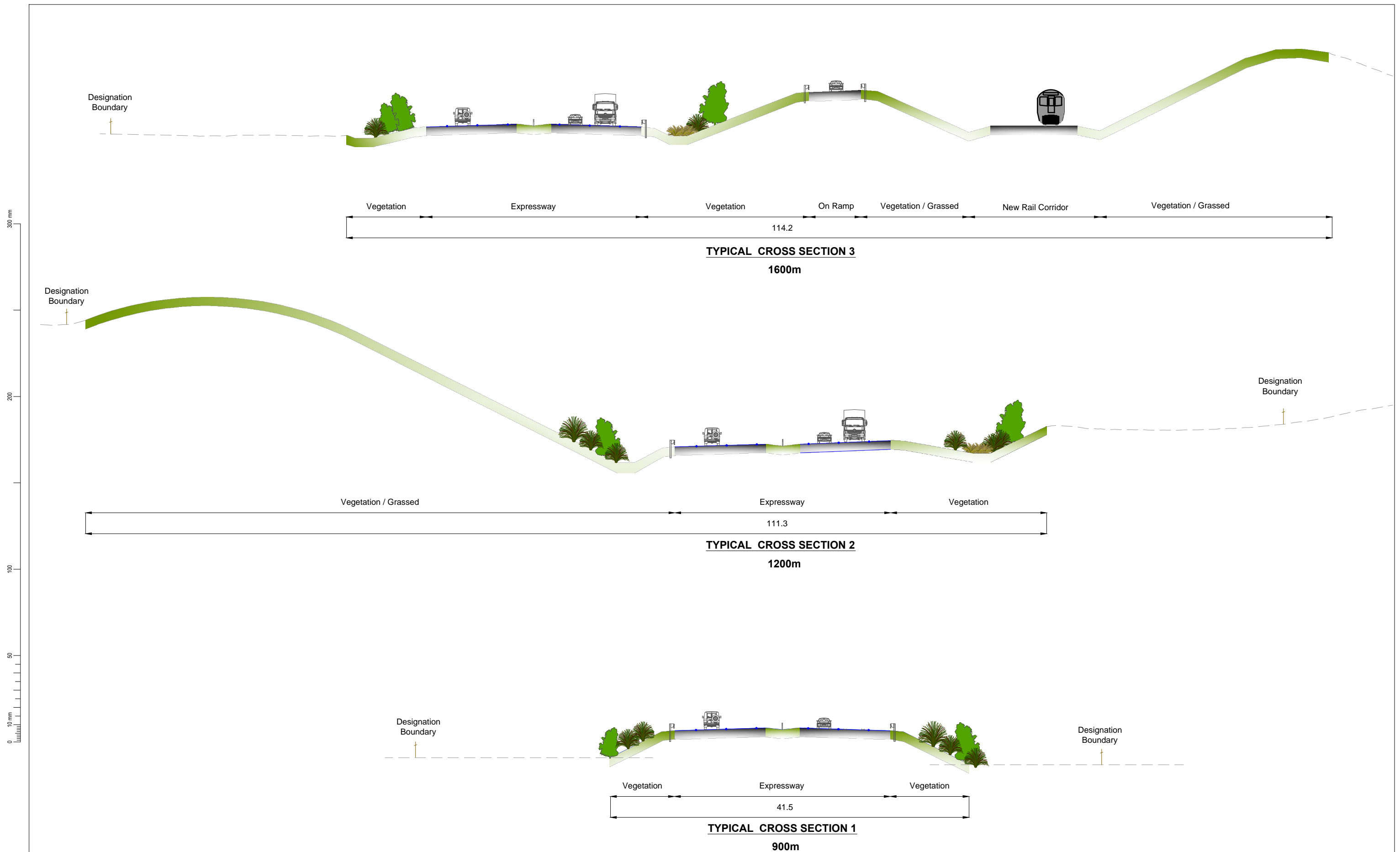
Revision	Amendment	Approved	Revision Date



Drawn	Designed	Approved	Revision Date
CAD	MAE	T.COULMAN	09/2011

Project No.	Scale
5C1814.00	1:100(A1), 1:200(A3)

Project	
NEW ZEALAND TRANSPORT AGENCY PEKA PEKA TO NORTH OTAKI EXPRESSWAY FOR CONSENTING	
Sheet	
TYPICAL CROSS SECTION SHEET 2 OF 2	
Drawing No.	Sheet No. / Revision
5/2664/1/6504	GM10 / R0



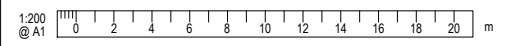
Revision	Amendment	Approved	Revision Date
R1	ISSUED FOR CONSENT	A.N.	MAR 2013

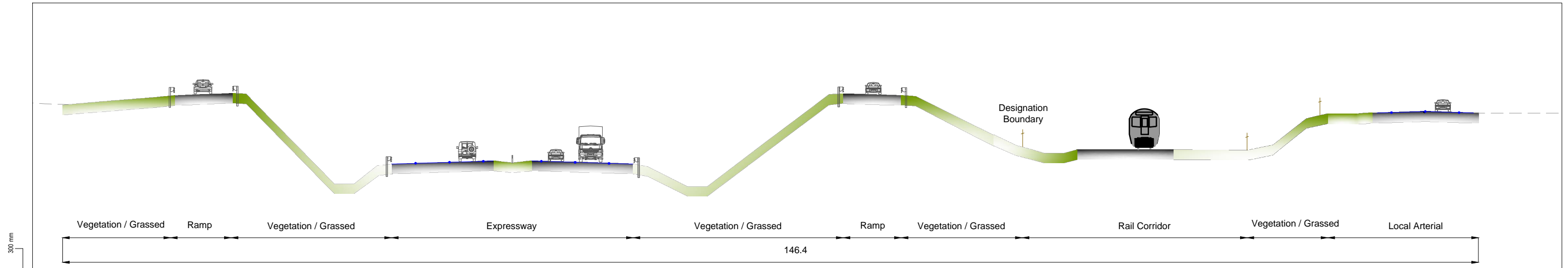


Drawn	Designed	Approved	Revision Date
MAE	MAE	T.COULMAN	11/2012
Project No.	Scale		Sheet No.
5C1814.00	1:200(A1), 1:400(A3)		5/2664/1/6504
Revision			
GM11			R1

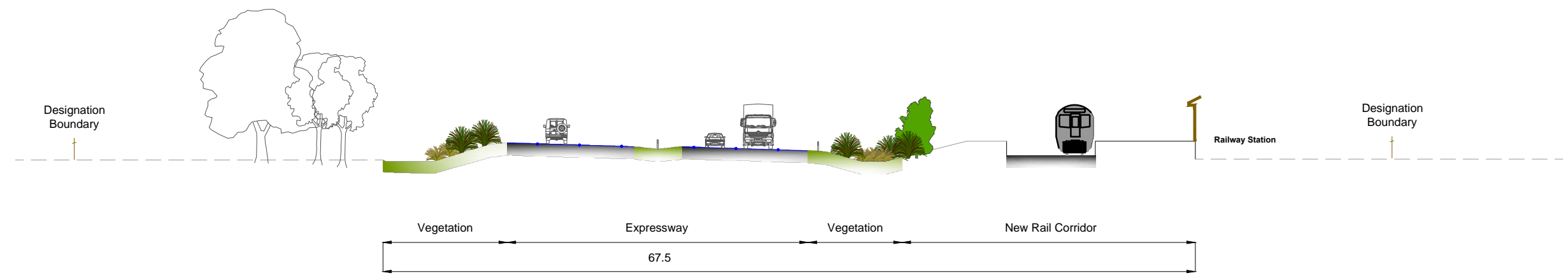
Project  
NEW ZEALAND TRANSPORT AGENCY  
PEKA PEKA TO NORTH OTAKI EXPRESSWAY  
FOR CONSENTING

Sheet  
**ROAD SECTIONS**  
**SHEET 1 OF 5**

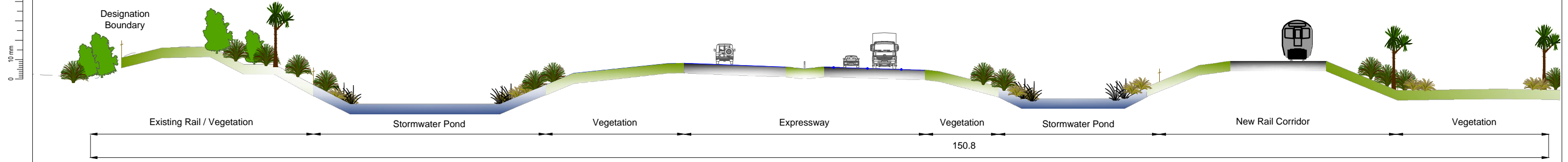




**TYPICAL CROSS SECTION 6**  
4050m



**TYPICAL CROSS SECTION 5**  
2350m



**TYPICAL CROSS SECTION 4**  
1900m

Revision	Amendment	Approved	Revision Date
R1	ISSUED FOR CONSENT	A.N.	MAR 2013



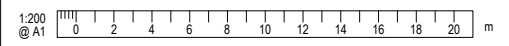
**OPUS URS**

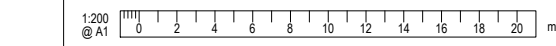
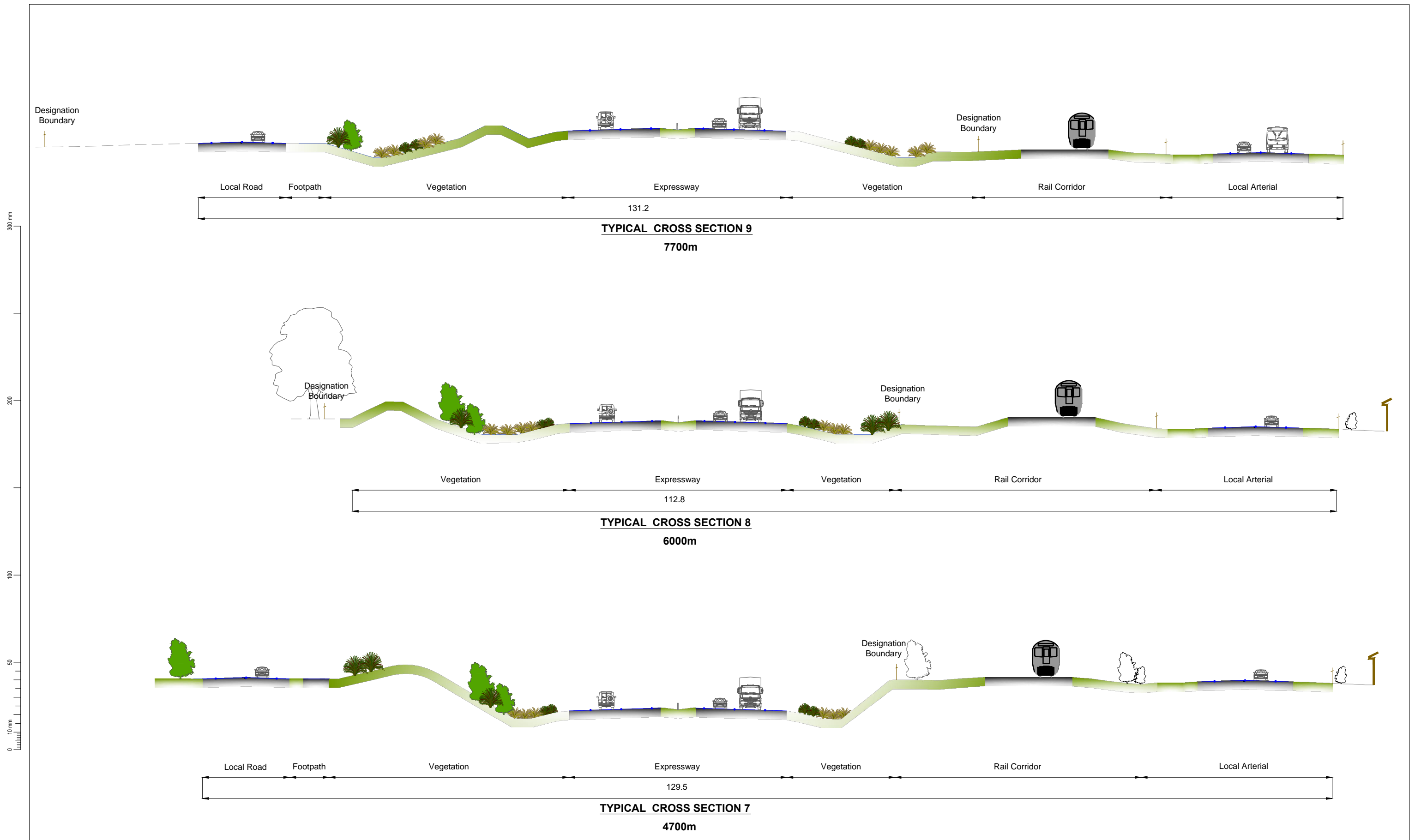
Drawn	Designed	Approved	Revision Date
MAE	MAE	T.COULMAN	11/2012
Project No.	Scale		Drawing No.
5C1814.00	1:200(A1), 1:400(A3)		5/2664/1/6504

Project  
NEW ZEALAND TRANSPORT AGENCY  
PEKA PEKA TO NORTH OTAKI EXPRESSWAY  
FOR CONSENTING

Sheet  
**ROAD SECTIONS**  
SHEET 2 OF 5

Sheet No.	Revision
GM12	R1



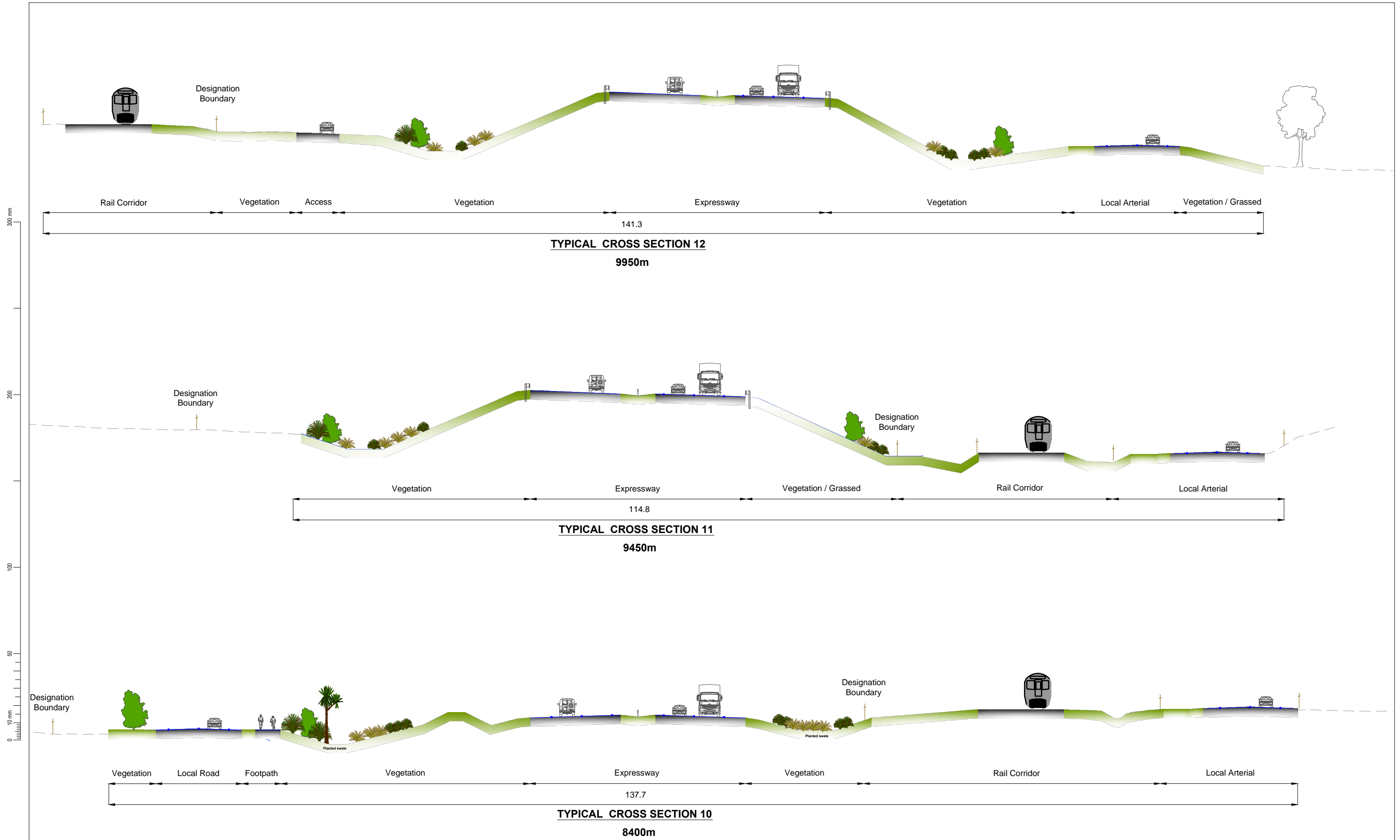


Revision	Amendment	Approved	Revision Date
R1	ISSUED FOR CONSENT	A.N.	MAR 2013



Drawn	Designed	Approved	Revision Date
MAE	MAE	T.COULMAN	11/2012
Project No.	Scale		Revision Date
5C1814.00	1:200(A1), 1:400(A3)		11/2012

Project NEW ZEALAND TRANSPORT AGENCY PEKA PEKA TO NORTH OTAKI EXPRESSWAY FOR CONSENTING	
Sheet ROAD SECTIONS SHEET 3 OF 5	
Drawing No. 5/2664/1/6504	Sheet No. Revision GM13 R1

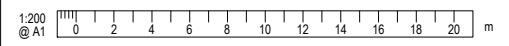


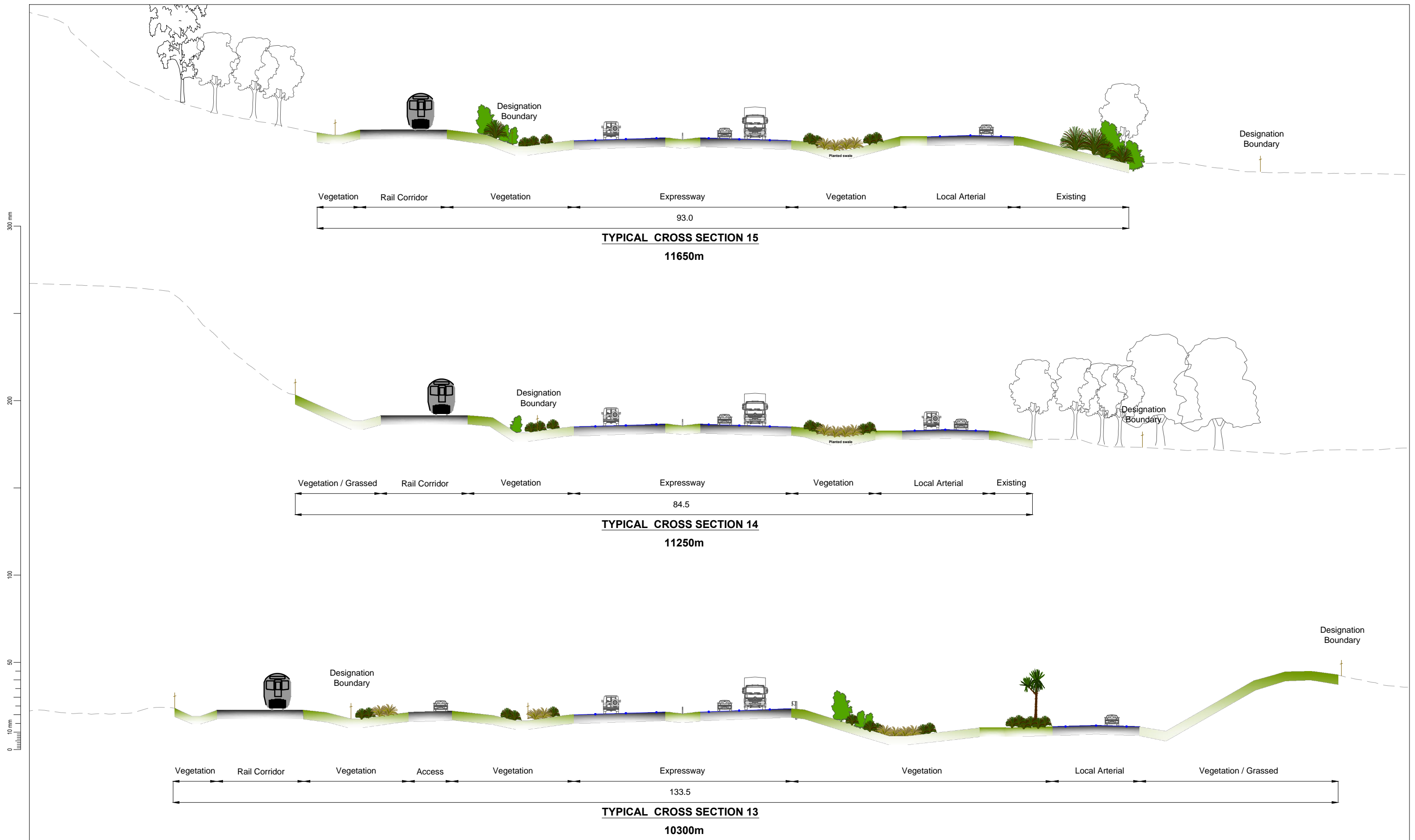
Revision	Amendment	Approved	Revision Date
R1	ISSUED FOR CONSENT	A.N.	MAR 2013



Drawn	Designed	Approved	Revision Date
MAE	MAE	T.COULMAN	11/2012
Project No.	Scale		Revision Date
5C1814.00	1:200(A1), 1:400(A3)		11/2012

Project NEW ZEALAND TRANSPORT AGENCY PEKA PEKA TO NORTH OTAKI EXPRESSWAY FOR CONSENTING	
Sheet ROAD SECTIONS SHEET 4 OF 5	
Drawing No. 5/2664/1/6504	Sheet No. Revision GM14 R1



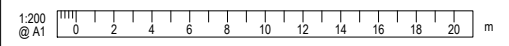


Revision	Amendment	Approved	Revision Date
R1	ISSUED FOR CONSENT	A.N.	MAR 2013



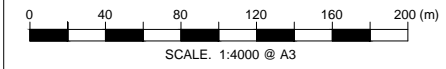
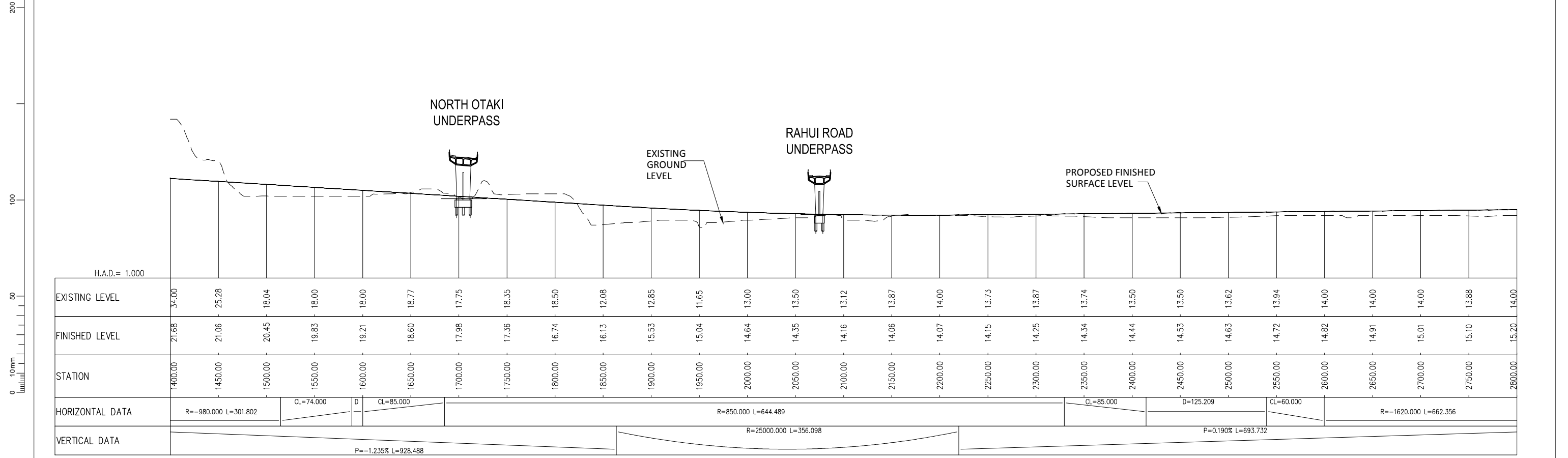
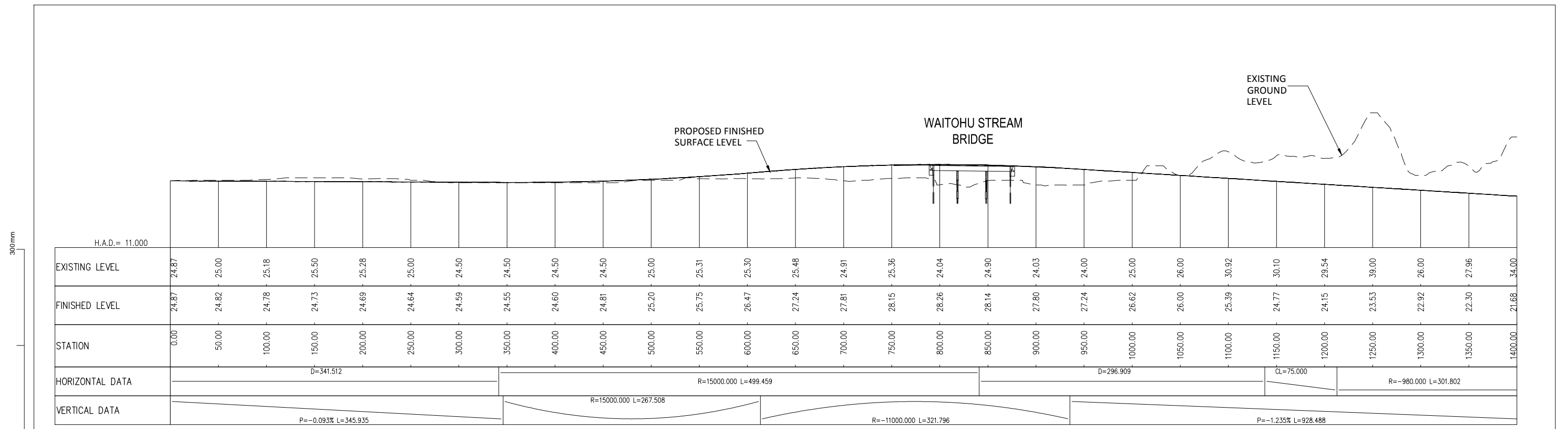
Drawn	Designed	Approved	Revision Date
MAE	MAE	T.COULMAN	11/2012
Project No.	Scale		Sheet No.
5C1814.00	1:200(A1), 1:400(A3)		5/2664/1/6504

Project NEW ZEALAND TRANSPORT AGENCY PEKA PEKA TO NORTH OTAKI EXPRESSWAY FOR CONSENTING	
Sheet ROAD SECTIONS SHEET 5 OF 5	
Sheet No.	Revision
GM15	R1









Revision	Amendment	Approved	Revision Date



**OPUS** **URS**

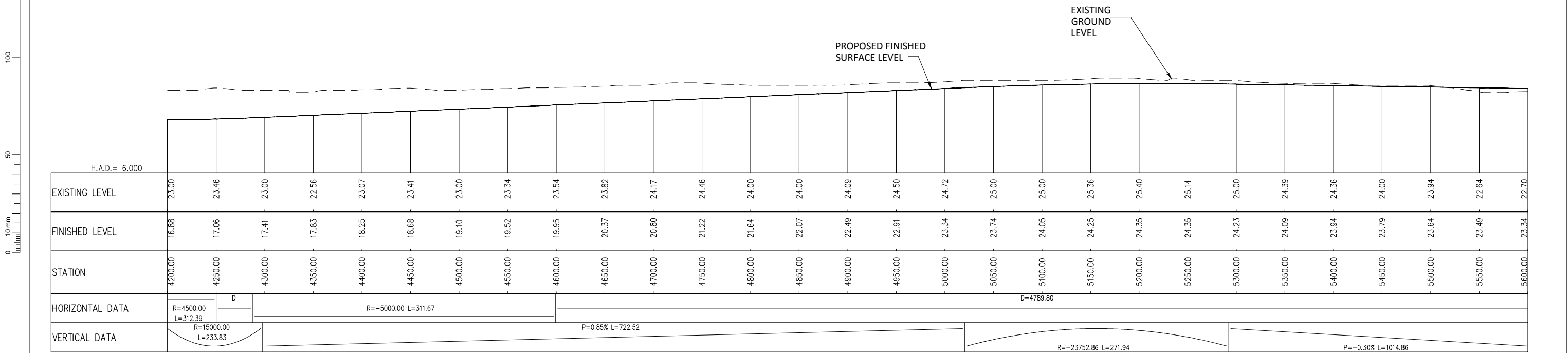
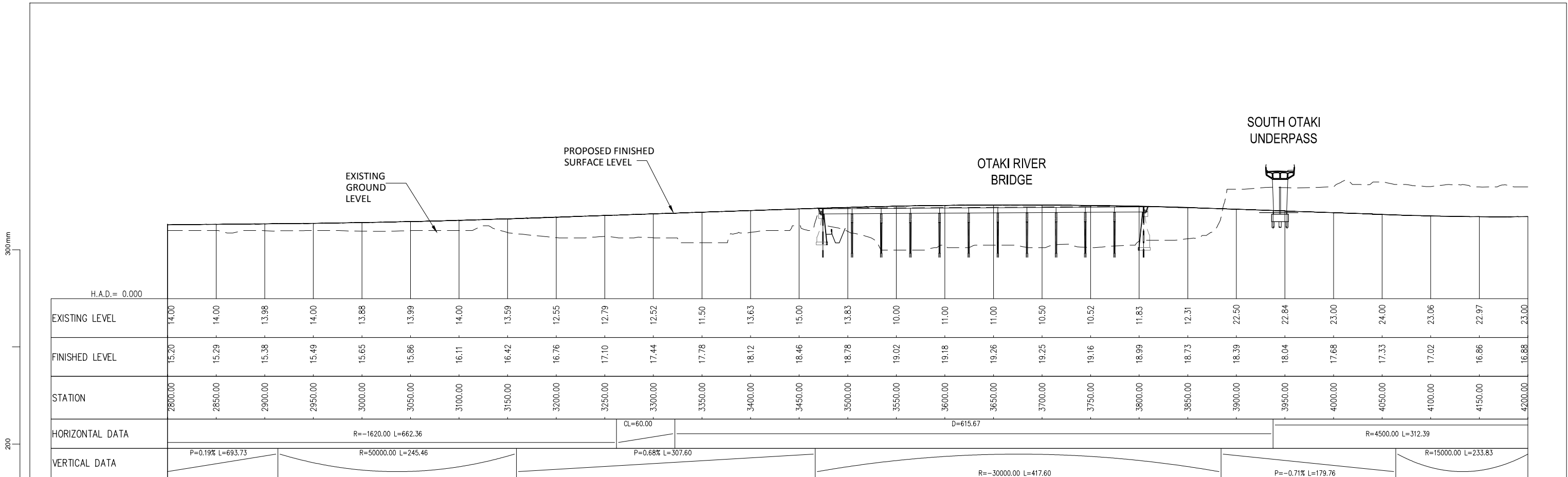
Drawn: MX, Designed: MAE, Approved: T.COULMAN, Revision Date: 09/2011

Project No: 5C1814.00, Scale: 1:2000(A1), 1:4000(A3)

Project: NEW ZEALAND TRANSPORT AGENCY PEKA PEKA TO NORTH OTAKI EXPRESSWAY FOR CONSENTING

Sheet: MAIN ALIGNMENT - LONGITUDINAL PROFILE SHEET 1 OF 5

Drawing No: 5/2664/1/6504, Sheet No: GM20, Revision: R0



Revision	Amendment	Approved	Revision Date



Drawn	Designed	Approved	Revision Date
MX	MAE	T.COULMAN	09/2011

Project No.	Scale
5C1814.00	1:2000(A1), 1:4000(A3)

Project	
NEW ZEALAND TRANSPORT AGENCY PEKA PEKA TO NORTH OTAKI EXPRESSWAY FOR CONSENTING	
Sheet	
MAIN ALIGNMENT - LONGITUDINAL PROFILE SHEET 2 OF 5	
Drawing No.	Sheet No. Revision
5/2664/1/6504	GM21 R0

300mm

200

100

50

10mm

0

10mm

0

10mm

0

10mm

0

10mm

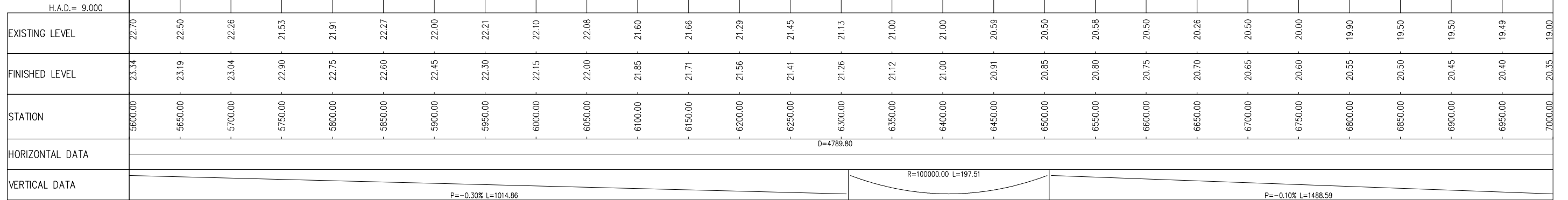
0

10mm

0

EXISTING GROUND LEVEL

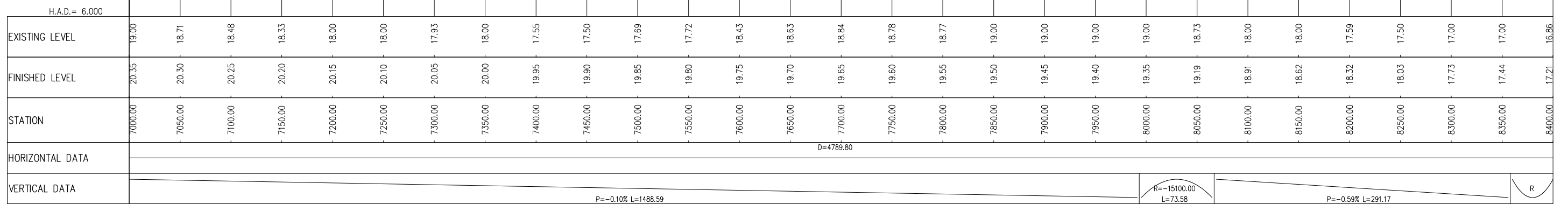
PROPOSED FINISHED SURFACE LEVEL



TE HORO UNDERPASS

EXISTING GROUND LEVEL

PROPOSED FINISHED SURFACE LEVEL



Revision	Amendment	Approved	Revision Date



Project  
 NEW ZEALAND TRANSPORT AGENCY  
 PEKA PEKA TO NORTH OTAKI EXPRESSWAY  
 FOR CONSENTING

Drawn: MX  
 Designed: MAE  
 Approved: T.COULMAN  
 Revision Date: 09/2011

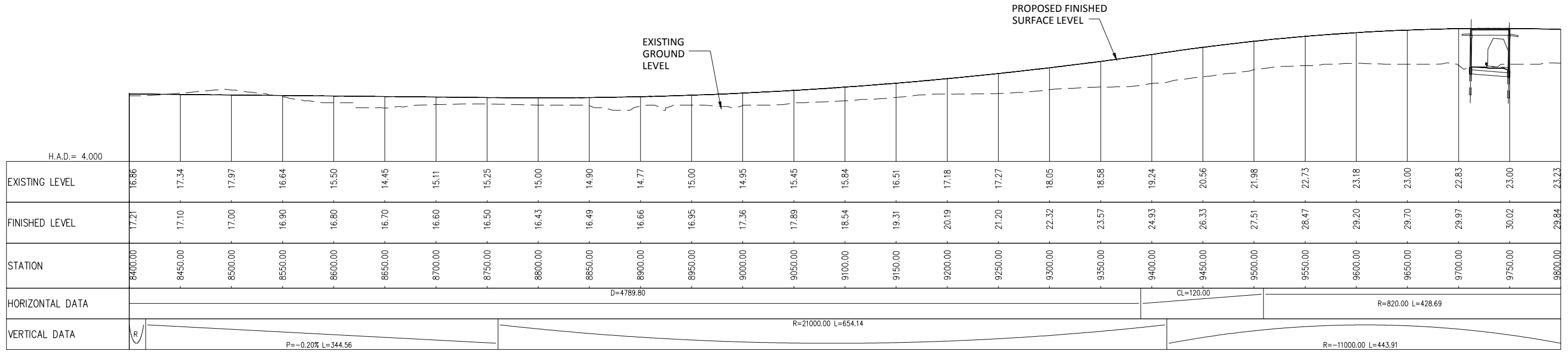
Sheet  
 MAIN ALIGNMENT - LONGITUDINAL PROFILE  
 SHEET 3 OF 5

Project No.: 5C1814.00  
 Scale: 1:2000(A1), 1:4000(A3)

Drawing No.: 5/2664/1/6504  
 Sheet No.: GM22  
 Revision: R0

MARY CREST OVERPASS

300mm

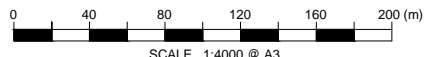
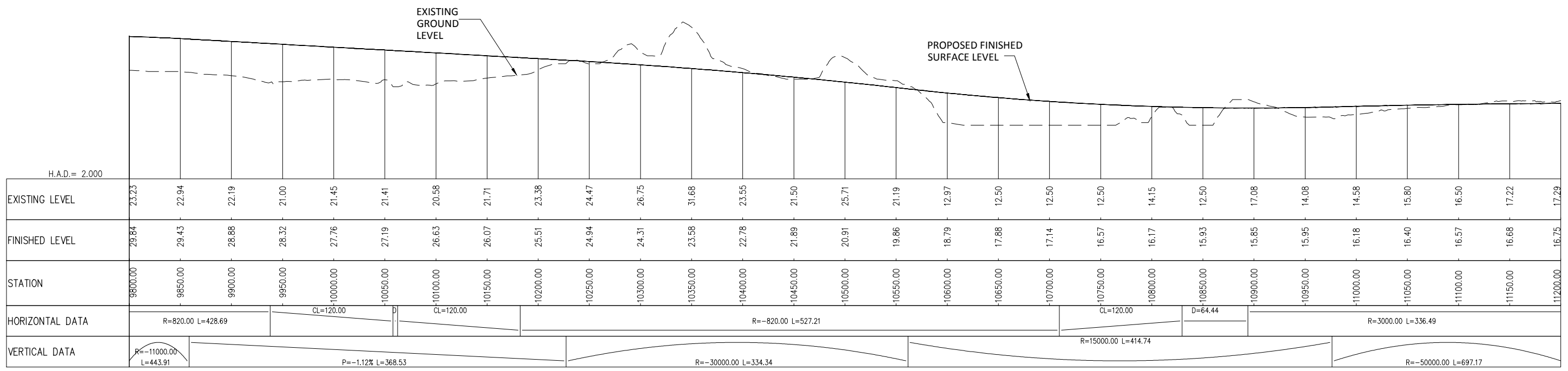


100

50

0

10mm



Revision	Amendment	Approved	Revision Date



Project  
NEW ZEALAND TRANSPORT AGENCY  
PEKA PEKA TO NORTH OTAKI EXPRESSWAY  
FOR CONSENTING

Drawn: MX  
Designed: MAE  
Approved: T.COULMAN  
Revision Date: 09/2011

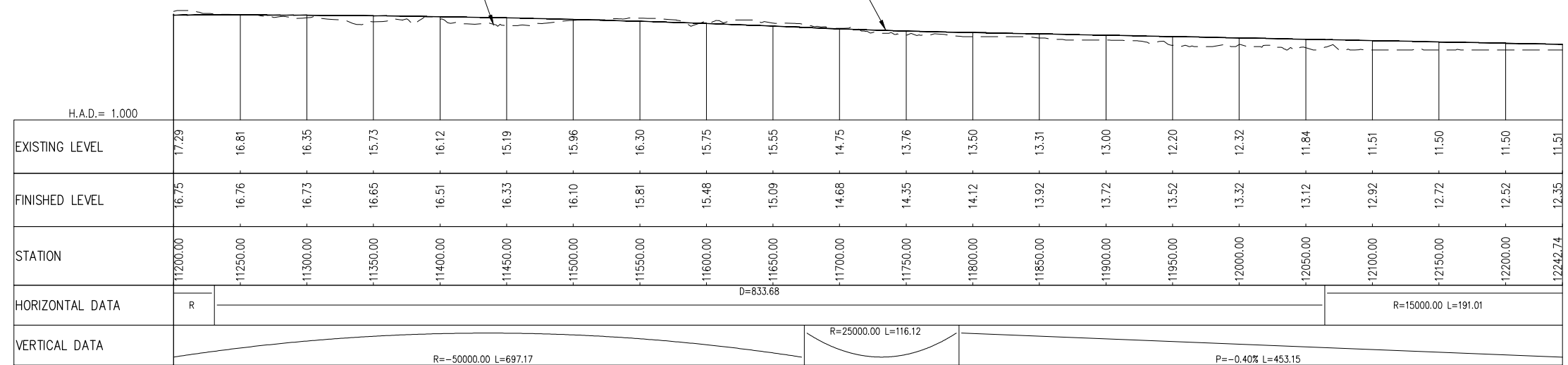
Sheet  
MAIN ALIGNMENT - LONGITUDINAL PROFILE  
SHEET 4 OF 5

Project No.: 5C1814.00  
Scale: 1:2000(A1), 1:4000(A3)

Drawing No.: 5/2664/1/6504  
Sheet No.: GM23  
Revision: R0

300mm  
200  
100  
50  
0  
10mm

EXISTING GROUND LEVEL  
PROPOSED FINISHED SURFACE LEVEL



Revision	Amendment	Approved	Revision Date



Drawn	Designed	Approved	Revision Date
MX	MAE	T.COULMAN	09/2011
Project No.	Scale	Drawing No.	
5C1814.00	1:2000(A1), 1:4000(A3)	5/2664/1/6504	

Project NEW ZEALAND TRANSPORT AGENCY PEKA PEKA TO NORTH OTAKI EXPRESSWAY FOR CONSENTING			
Sheet MAIN ALIGNMENT - LONGITUDINAL PROFILE SHEET 5 OF 5			
Sheet No.	Revision		
GM24	R0		