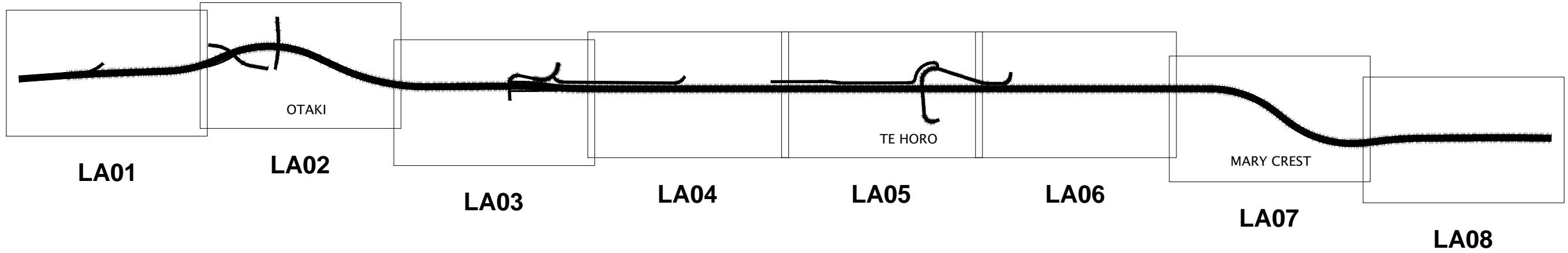


300 mm
200
100
50
0 10 mm



LEGEND FOR SHEETS LA01-LA08

-  WATERWAYS
-  PROPOSED STORMWATER BASINS
-  EXISTING VEGETATION TO BE RETAINED
-  PROPOSED NATIVE SCREEN PLANTING OF VARIED HEIGHTS
-  PROPOSED GRASS
-  PROPOSED LOW GROWING OR AMENITY PLANTING
-  PROPOSED VEGETATED SWALE
-  PROPOSED RIPARIAN OR STREAMSIDE PLANTING
-  PROPOSED WETLAND PLANTING
-  EXISTING LOCAL ACCESS WAYS OR WALKING/CYCLING PATHS
-  PROPOSED SHARED PATH (PART OF PEKAPEKA TO OTAKI PROJECT)
-  PROPOSED LOW BUNDING
-  PROPOSED FENCE FOR VISUAL SCREENING

Revision	Amendment	Approved	Revision Date
R1	ISSUED FOR CONSENT	A.N.	MAR 2013



Project
NEW ZEALAND TRANSPORT AGENCY
PEKA PEKA TO NORTH OTAKI EXPRESSWAY
FOR CONSENTING

Sheet
DRAWING KEY
SHEET 1 OF 9

Drawn	Designed	Approved	Revision Date
T.COX	T.COX	A.NICHOLLS	OCT 2012

Project No.	Scale
5C1814.00	1:2000(A1), 1:4000(A3)

Drawing No.	Sheet No.	Revision
5/2664/1/6504	LA00	R1

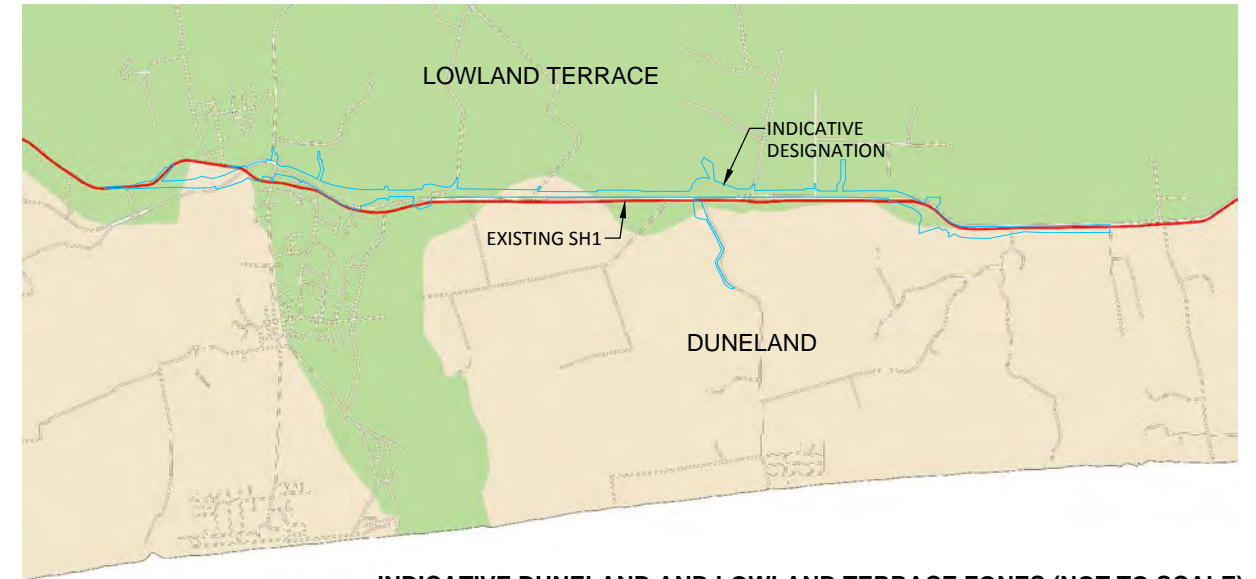
300 mm
200
100
50
0 10 mm

IN LINE WITH THE PLANT RECOMMENDATIONS FOR THESE AREAS IN 'WELLINGTON REGIONAL NATIVE PLANT GUIDE,' BY GREATER WELLINGTON REGIONAL COUNCIL (2010), OUR AREAS MARKED AS DUNELAND AND LOWLAND TERRACE ZONES MAY INCLUDE THE FOLLOWING PLANT SPECIES:

INDICATIVE PROPOSED PLANT SPECIES FOR SHEETS LA01-LA08		
DUNELAND ZONE	LOWLAND TERRACE ZONE	RIPARIAN, WETLAND AND/OR SWALE
TREES AND SHRUBS:	TREES AND SHRUBS:	TREES AND SHRUBS (NOT TO BE USED IN SWALES):
<i>Cordyline australis</i> , cabbage tree	<i>Cordyline australis</i> , cabbage tree	<i>Cordyline australis</i> , cabbage tree
<i>Cordyline banksii</i> , forest cabbage tree	<i>Coprosma acerosa</i> , sand coprosma	<i>Cordyline banksii</i> , forest cabbage tree
<i>Dacrycarpus dacrydioides</i> , kahikatea	<i>Coprosma rhamnoides</i>	<i>Cortaderia fulvida</i> , toetoe
<i>Dacrydium cupressinum</i> , rimu	<i>Cortaderia fulvida</i> , toetoe	<i>Cortaderia toetoe</i> , toetoe
<i>Dysoxylum spectabile</i> , kohekohe	<i>Cortaderia toetoe</i> , toetoe	<i>Dacrycarpus dacrydioides</i> , kahikatea
<i>Elaeocarpus dentatus</i> , hinau	<i>Dadonea viscosa</i> , akeake	<i>Hebe stricta</i> var. <i>atkinsonii</i> , koromiko
<i>Hedycarya arborea</i> , pigeonwood	<i>Dysoxylum spectabile</i> , kohekohe	<i>Kunzea ericoides</i> , kanuka
<i>Knightia excelsa</i> , rewarewa	<i>Entelea arborescens</i> , whau	<i>Leptospermum scoparium</i> , manuka
<i>Leptospermum scoparium</i> , manuka	<i>Kunzea ericoides</i> , kanuka	<i>Melicytus ramiflorus</i> , mahoe
<i>Lophomyrtus bullata</i> , ramarama	<i>Leptospermum scoparium</i> , manuka	<i>Pittosporum tenuifolium</i> , kohuhu
<i>Melicope ternata</i> , wharangi	<i>Melicytus ramiflorus</i> , mahoe	<i>Pseudopanax arboreus</i> , five-finger
<i>Metrosideros robusta</i> , northern rata	<i>Myrsine australis</i> , mapou	GRASSES AND LOW GROWING PLANTS:
<i>Neomyrtus pedunculata</i> , rohu	<i>Olearia paniculata</i> , akiraho	<i>Carex secta</i>
<i>Olearia rani</i> , heketara	<i>Olearia solandri</i> , coastal tree daisy	<i>Carex virgata</i>
<i>Pittosporum eugenioides</i> , lemonwood	<i>Phormium tenax</i> , harakeke	<i>Juncus maritimus</i> , sea rush
<i>Pittosporum tenuifolium</i> , kohuhu	<i>Plagianthus divaricatus</i> , salt-marsh ribbonwood	<i>Juncus pallidus</i>
<i>Podocarpus totara</i> , totara	<i>Pseudopanax crassifolius</i> , lancewood	<i>Leptocarpus similis</i> , jointed wire rush
<i>Prumnopitys taxifolia</i> , matai	GRASSES AND LOW GROWING PLANTS:	<i>Phormium tenax</i> , harakeke
<i>Pseudopanax arboreus</i> , five-finger	<i>Carex secta</i>	<i>Schoenoplectus validus</i> , lake clubrush
<i>Rhabdothamnus solandri</i> , NZ gloxinia	<i>Carex pumila</i> , sand sedge	<i>Typhus orientalis</i> , raupo
<i>Streblus banksii</i> , large-leaved milk tree	<i>Carex virgata</i>	
<i>Streblus heterophyllus</i> , small leaved milk tree	<i>Desmoschoenus spiralis</i> , pingao	
GRASSES AND LOW GROWING PLANTS:	<i>Hebe stricta</i> var. <i>atkinsonii</i> , koromiko	
<i>Carex testacea</i> , speckled sedge	<i>Leptocarpus similis</i> , jointed wire rush	
<i>Hebe stricta</i> var. <i>atkinsonii</i> , koromiko	<i>Libertia peregrinans</i> , NZ iris	
<i>Helichrysum aggregatum</i> , niniao	<i>Pimelea prostrata</i>	
<i>Poa cita</i> , silver tussock	<i>Spinifex sericeus</i> , silvery sand grass	

NOTE: FINAL PLANT SPECIES AND DENSITIES/SPACINGS SPECIFIED WILL BE CONFIRMED WITH INPUTS FROM KCDC AND OTHER PROJECT SPECIALISTS (SUCH AS ECOLOGY AND HYDROLOGY) DURING FUTURE DESIGN STAGES.

INDICATIVE PROPOSED PLANT DENSITIES/SPACINGS ARE AS FOLLOWS:
 TREES AT 3-5m SPACINGS
 SHRUBS AT 1-3m SPACINGS
 GRASSES AND LOW GROWING PLANTS AT 1-2m SPACINGS

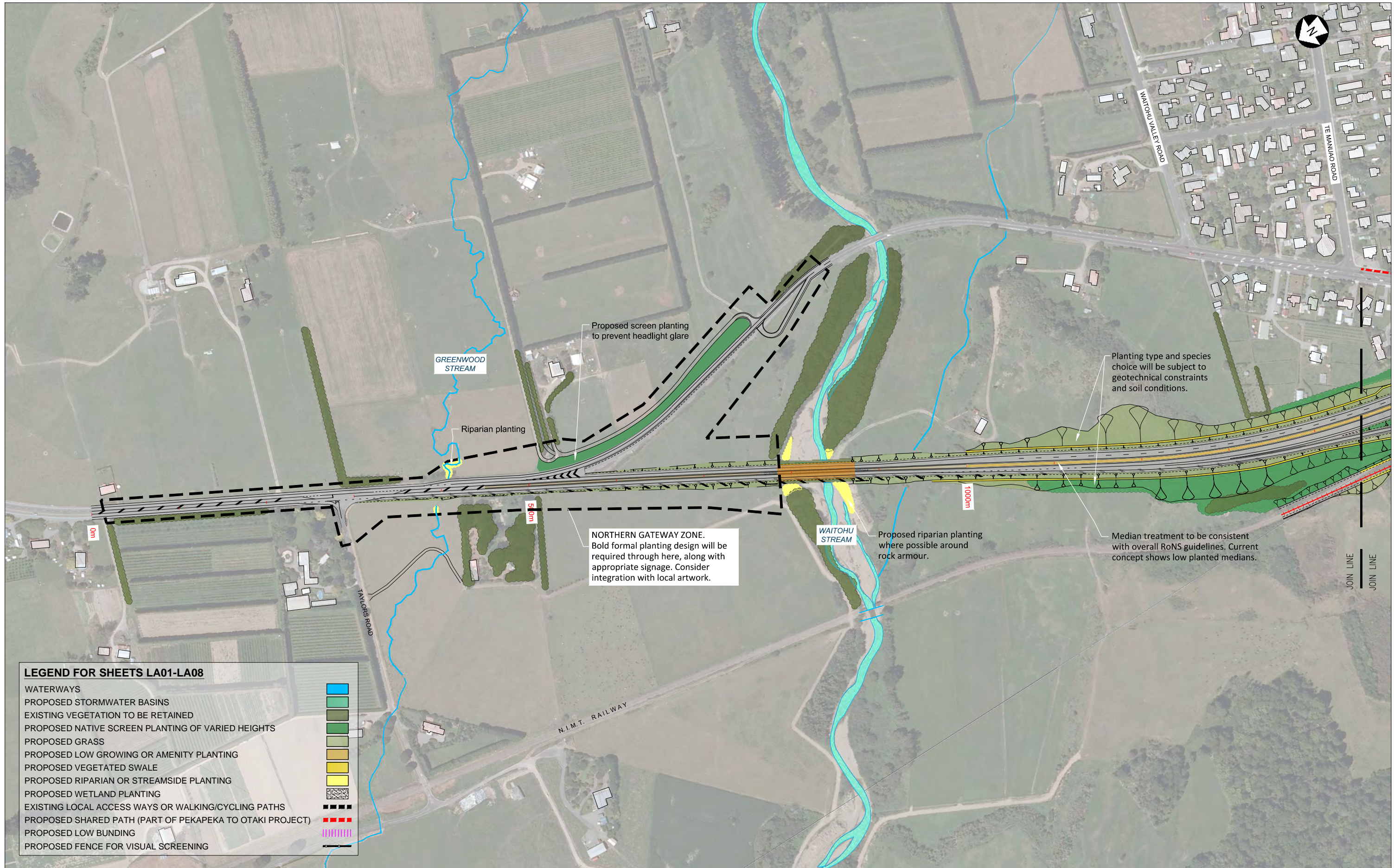


INDICATIVE DUNELAND AND LOWLAND TERRACE ZONES (NOT TO SCALE)

Revision	Amendment	Approved	Revision Date
R1	ISSUED FOR CONSENT	A.N.	MAR 2013



				Project NEW ZEALAND TRANSPORT AGENCY PEKA PEKA TO NORTH OTAKI EXPRESSWAY FOR CONSENTING	
Drawn	Designed	Approved	Revision Date	Sheet INDICATIVE PLANT SPECIES FOR LANDSCAPE PLANS SHEET 1B OF 9	
T.COX	T. COX	A.NICHOLLS	MAR 2013	Drawing No. 5/2664/1/6504	
Project No. 5C1814.00		Scale 1:2000(A1), 1:4000(A3)		Sheet No. LA00B	Revision R1



LEGEND FOR SHEETS LA01-LA08

WATERWAYS	
PROPOSED STORMWATER BASINS	
EXISTING VEGETATION TO BE RETAINED	
PROPOSED NATIVE SCREEN PLANTING OF VARIOUS HEIGHTS	
PROPOSED GRASS	
PROPOSED LOW GROWING OR AMENITY PLANTING	
PROPOSED VEGETATED SWALE	
PROPOSED RIPARIAN OR STREAMSIDE PLANTING	
PROPOSED WETLAND PLANTING	
EXISTING LOCAL ACCESS WAYS OR WALKING/CYCLING PATHS	
PROPOSED SHARED PATH (PART OF PEKAPEKA TO OTAKI PROJECT)	
PROPOSED LOW BUNDING	
PROPOSED FENCE FOR VISUAL SCREENING	

Revision	Amendment	Approved	Revision Date
R1	ISSUED FOR CONSENT	A.N.	MAR 2013



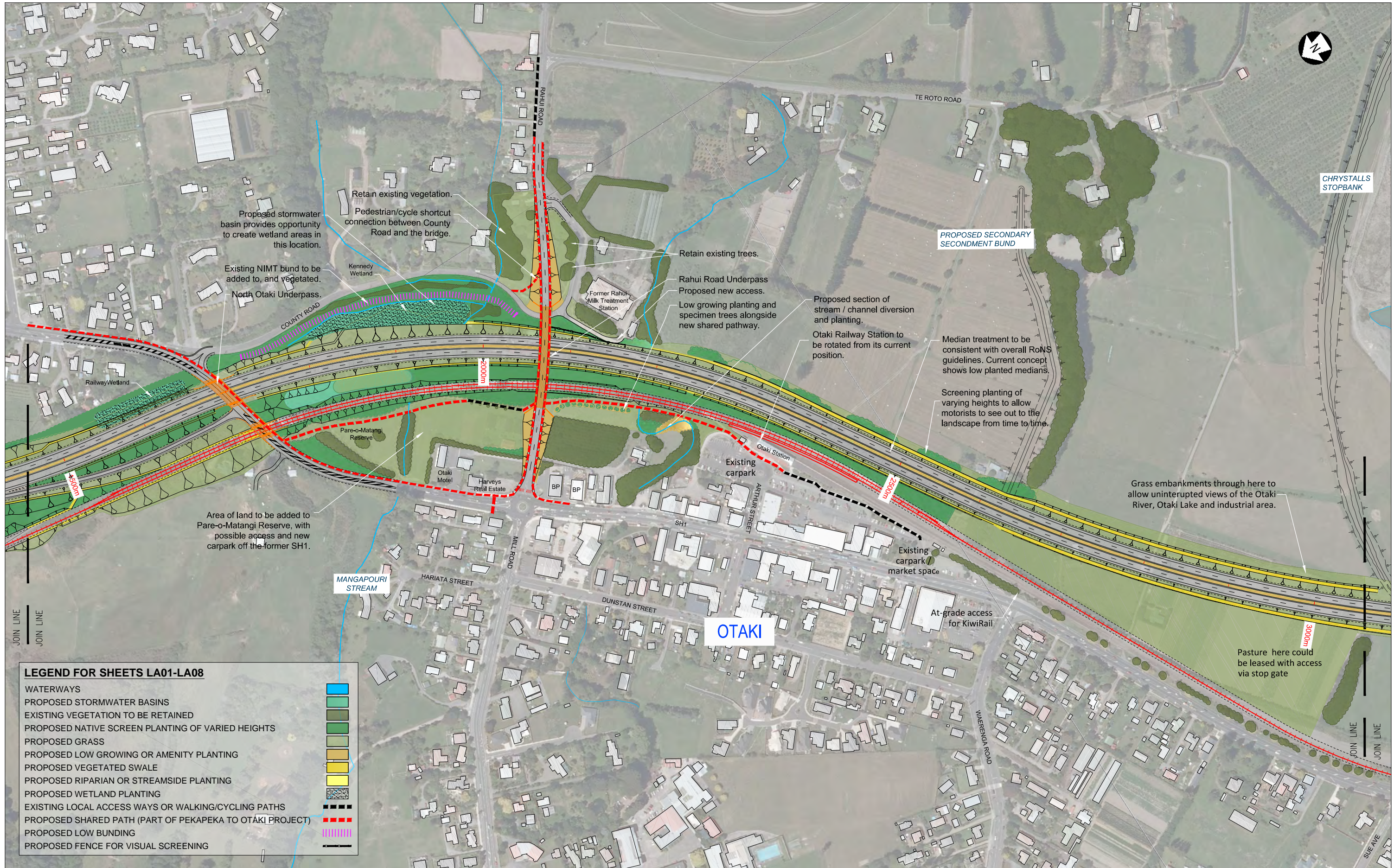
Project
NEW ZEALAND TRANSPORT AGENCY
PEKA PEKA TO NORTH OTAKI EXPRESSWAY
FOR CONSENTING

Drawn	Designed	Approved	Revision Date
T.COX	T.COX	A.NICHOLLS	OCT 2012

Sheet
LANDSCAPE PLAN
SHEET 2 OF 9

Project No.	Scale	Drawing No.	Sheet No.	Revision
5C1814.00	1:2000(A1), 1:4000(A3)	5/2664/1/6504	LA01	R1





LEGEND FOR SHEETS LA01-LA08

WATERWAYS	[Blue line]
PROPOSED STORMWATER BASINS	[Light green fill]
EXISTING VEGETATION TO BE RETAINED	[Dark green fill]
PROPOSED NATIVE SCREEN PLANTING OF VARIED HEIGHTS	[Medium green fill]
PROPOSED GRASS	[Light yellow-green fill]
PROPOSED LOW GROWING OR AMENITY PLANTING	[Yellow-green fill]
PROPOSED VEGETATED SWALE	[Yellow fill]
PROPOSED RIPARIAN OR STREAMSIDE PLANTING	[Light green border]
PROPOSED WETLAND PLANTING	[Dark green border]
EXISTING LOCAL ACCESS WAYS OR WALKING/CYCLING PATHS	[Dashed black line]
PROPOSED SHARED PATH (PART OF PEKAPEKA TO OTAKI PROJECT)	[Red dashed line]
PROPOSED LOW BUNDING	[Red dashed line]
PROPOSED FENCE FOR VISUAL SCREENING	[Pink dashed line]

Revision	Amendment	Approved	Revision Date
R1	ISSUED FOR CONSENT	A.N.	MAR 2013



Project
 NEW ZEALAND TRANSPORT AGENCY
 PEKA PEKA TO NORTH OTAKI EXPRESSWAY
 FOR CONSENTING

Drawn	Designed	Approved	Revision Date
T. COX	T. COX	A. NICHOLLS	OCT 2012
Project No.	Scale		
5C1814.00	1:2000(A1), 1:4000(A3)		

Sheet	Sheet No.	Revision
LANDSCAPE PLAN SHEET 3 OF 9	LA02	R1





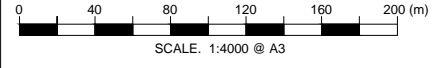
LEGEND FOR SHEETS LA01-LA08

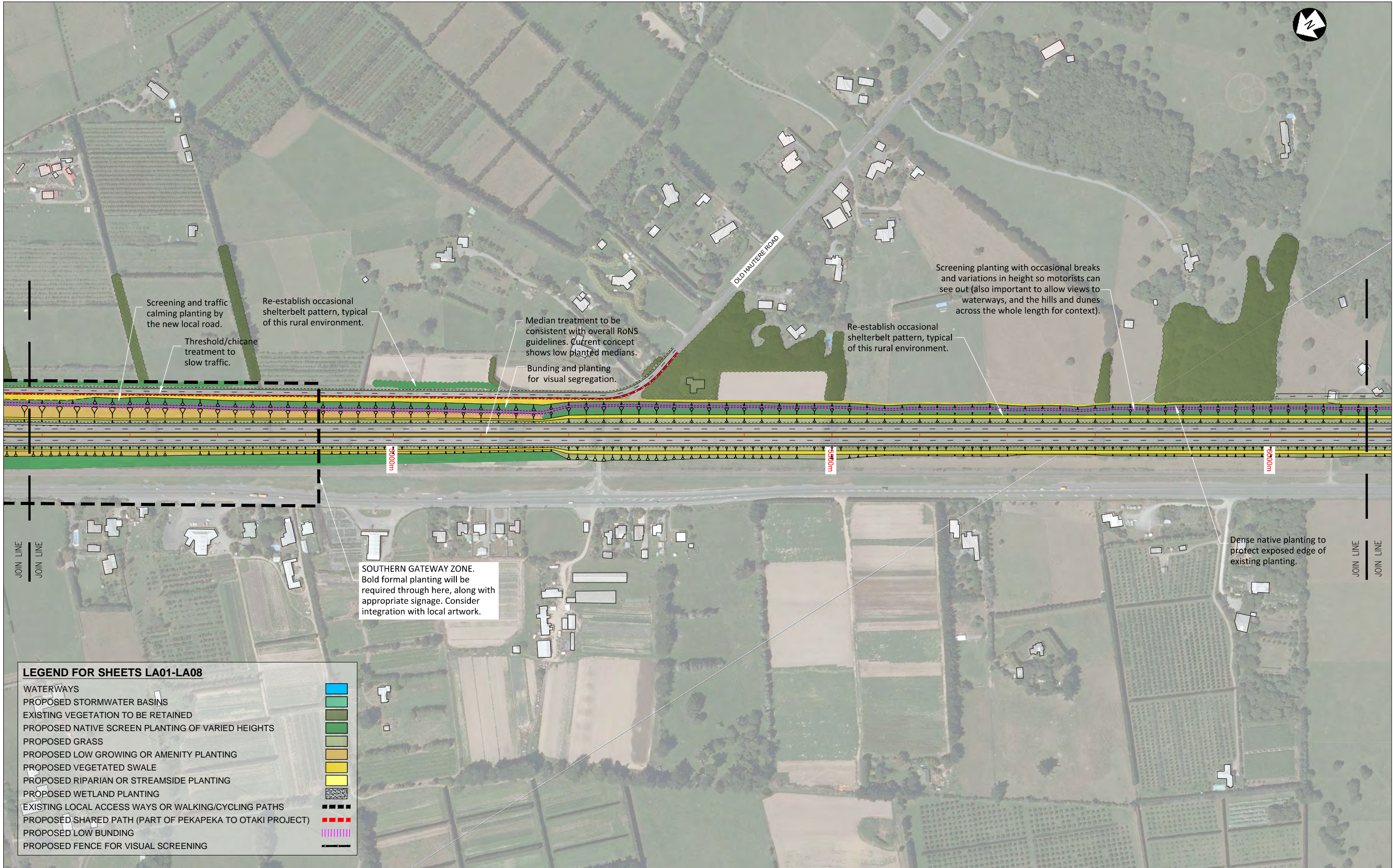
WATERWAYS	
PROPOSED STORMWATER BASINS	
EXISTING VEGETATION TO BE RETAINED	
PROPOSED NATIVE SCREEN PLANTING OF VARIOUS HEIGHTS	
PROPOSED GRASS	
PROPOSED LOW GROWING OR AMENITY PLANTING	
PROPOSED VEGETATED SWALE	
PROPOSED RIPARIAN OR STREAMSIDE PLANTING	
PROPOSED WETLAND PLANTING	
EXISTING LOCAL ACCESS WAYS OR WALKING/CYCLING PATHS	
PROPOSED SHARED PATH (PART OF PEKAPEKA TO OTAKI PROJECT)	
PROPOSED LOW BUNDING	
PROPOSED FENCE FOR VISUAL SCREENING	

Revision	Amendment	Approved	Revision Date
R1	ISSUED FOR CONSENT	A.N.	MAR 2013



Project			
NEW ZEALAND TRANSPORT AGENCY PEKA PEKA TO NORTH OTAKI EXPRESSWAY FOR CONSENTING			
Sheet			
LANDSCAPE PLAN SHEET 4 OF 9			
Drawn	Designed	Approved	Revision Date
T.COX	T.COX	A.NICHOLLS	OCT 2012
Project No.	Scale	Drawing No.	Sheet No. Revision
5C1814.00	1:2000(A1), 1:4000(A3)	5/2664/1/6504	LA03 R1





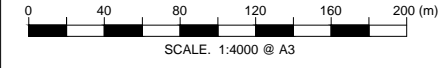
LEGEND FOR SHEETS LA01-LA08

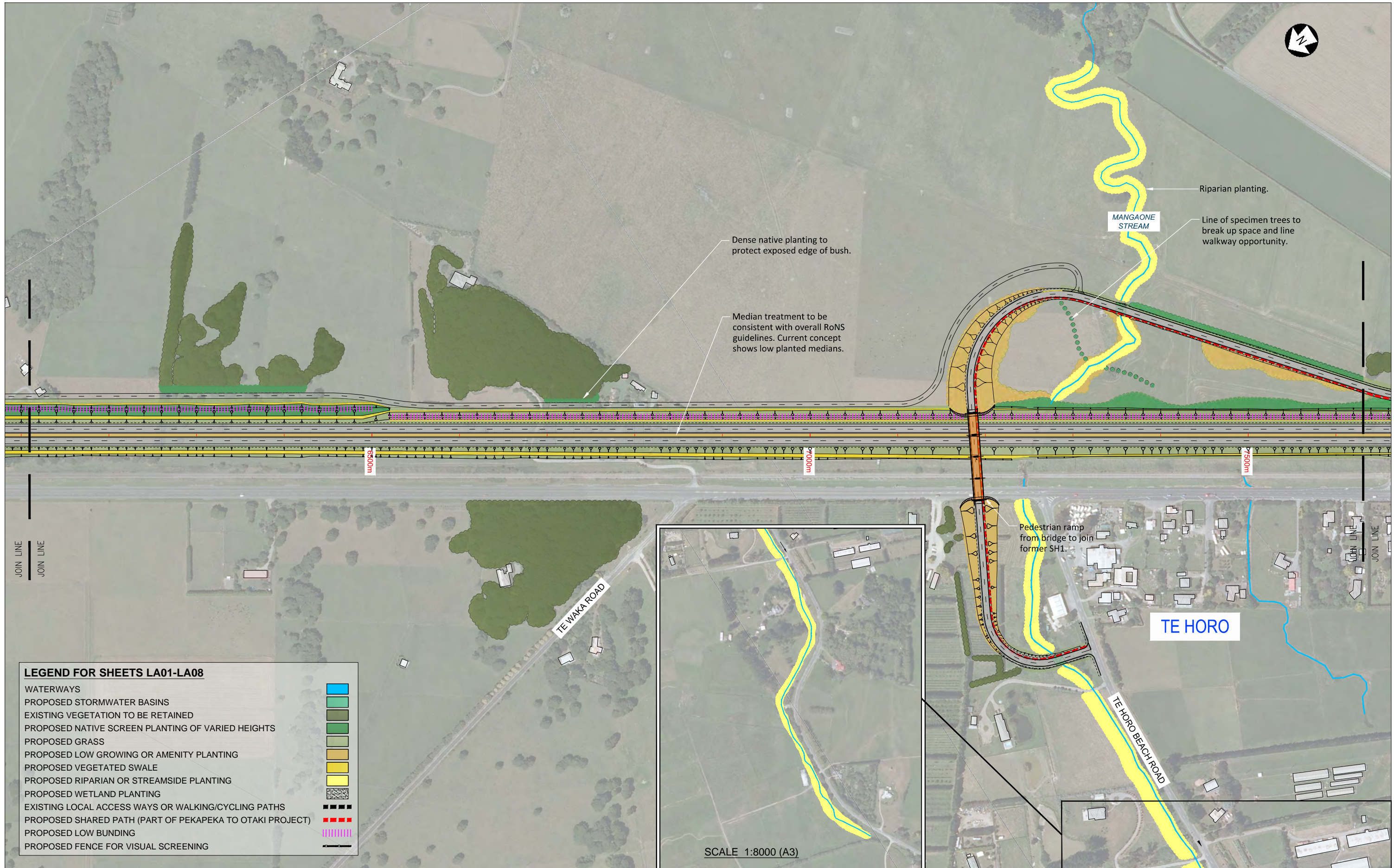
WATERWAYS	
PROPOSED STORMWATER BASINS	
EXISTING VEGETATION TO BE RETAINED	
PROPOSED NATIVE SCREEN PLANTING OF VARIOUS HEIGHTS	
PROPOSED GRASS	
PROPOSED LOW GROWING OR AMENITY PLANTING	
PROPOSED VEGETATED SWALE	
PROPOSED RIPARIAN OR STREAMSIDE PLANTING	
PROPOSED WETLAND PLANTING	
EXISTING LOCAL ACCESS WAYS OR WALKING/CYCLING PATHS	
PROPOSED SHARED PATH (PART OF PEKAPEKA TO OTAKI PROJECT)	
PROPOSED LOW BUNDING	
PROPOSED FENCE FOR VISUAL SCREENING	

Revision	Amendment	Approved	Revision Date
R1	ISSUED FOR CONSENT	A.N.	MAR 2013



Project			
NEW ZEALAND TRANSPORT AGENCY PEKA PEKA TO NORTH OTAKI EXPRESSWAY FOR CONSENTING			
Sheet			
LANDSCAPE PLAN SHEET 5 OF 9			
Drawn	Designed	Approved	Revision Date
T.COX	T.COX	A.NICHOLLS	OCT 2012
Project No.	Scale	Drawing No.	Sheet No. Revision
5C1814.00	1:2000(A1), 1:4000(A3)	5/2664/1/6504	LA04 R1





LEGEND FOR SHEETS LA01-LA08

WATERWAYS	
PROPOSED STORMWATER BASINS	
EXISTING VEGETATION TO BE RETAINED	
PROPOSED NATIVE SCREEN PLANTING OF VARIOUS HEIGHTS	
PROPOSED GRASS	
PROPOSED LOW GROWING OR AMENITY PLANTING	
PROPOSED VEGETATED SWALE	
PROPOSED RIPARIAN OR STREAMSIDE PLANTING	
PROPOSED WETLAND PLANTING	
EXISTING LOCAL ACCESS WAYS OR WALKING/CYCLING PATHS	
PROPOSED SHARED PATH (PART OF PEKAPEKA TO OTAKI PROJECT)	
PROPOSED LOW BUNDING	
PROPOSED FENCE FOR VISUAL SCREENING	

TE WAKA ROAD

TE HORO

TE HORO BEACH ROAD

Pedestrian ramp from bridge to join former SH1.

SCALE 1:8000 (A3)

Revision	Amendment	Approved	Revision Date
R1	ISSUED FOR CONSENT	A.N.	MAR 2013

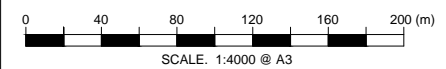


Project
 NEW ZEALAND TRANSPORT AGENCY
 PEKA PEKA TO NORTH OTAKI EXPRESSWAY
 FOR CONSENTING

Drawn	Designed	Approved	Revision Date
T. COX	T. COX	A. NICHOLLS	OCT 2012

Sheet
LANDSCAPE PLAN
SHEET 6 OF 9

Project No.	Scale	Drawing No.	Sheet No.	Revision
5C1814.00	1:2000(A1), 1:4000(A3)	5/2664/1/6504	LA05	R1

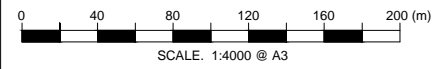




300 mm
200
100
50
0
10 mm

LEGEND FOR SHEETS LA01-LA08

- WATERWAYS
- PROPOSED STORMWATER BASINS
- EXISTING VEGETATION TO BE RETAINED
- PROPOSED NATIVE SCREEN PLANTING OF VARIOUS HEIGHTS
- PROPOSED GRASS
- PROPOSED LOW GROWING OR AMENITY PLANTING
- PROPOSED VEGETATED SWALE
- PROPOSED RIPARIAN OR STREAMSIDE PLANTING
- PROPOSED WETLAND PLANTING
- EXISTING LOCAL ACCESS WAYS OR WALKING/CYCLING PATHS
- PROPOSED SHARED PATH (PART OF PEKAPEKA TO OTAKI PROJECT)
- PROPOSED LOW BUNDING
- PROPOSED FENCE FOR VISUAL SCREENING



Revision	Amendment	Approved	Revision Date
R1	ISSUED FOR CONSENT	A.N.	MAR 2013



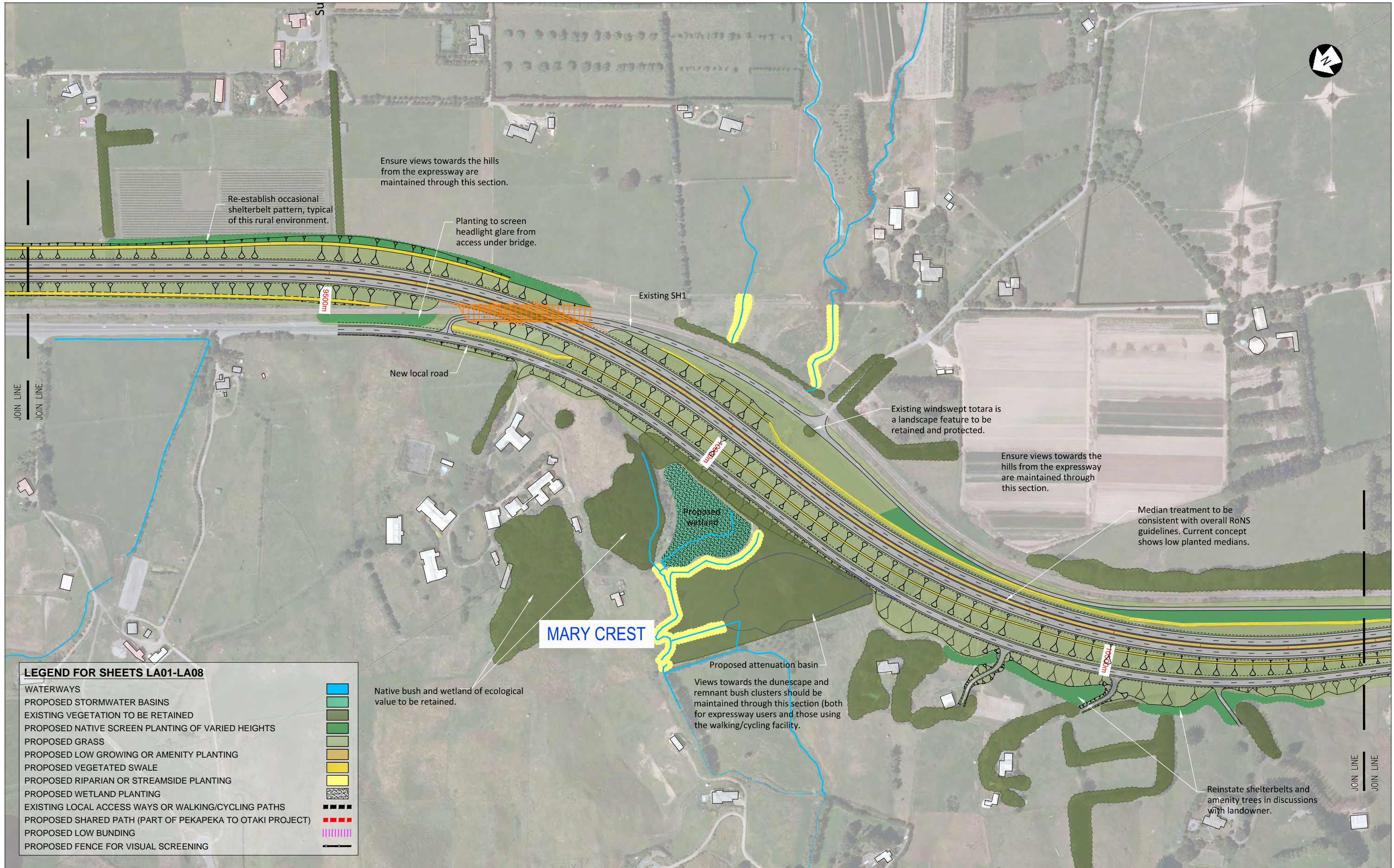
OPUS URS

Drawn	Designed	Approved	Revision Date
T. COX	T. COX	A. NICHOLLS	OCT 2012
Project No. 5C1814.00		Scale 1:2000(A1), 1:4000(A3)	

Project
NEW ZEALAND TRANSPORT AGENCY
PEKA PEKA TO NORTH OTAKI EXPRESSWAY
FOR CONSENTING

Sheet
LANDSCAPE PLAN
SHEET 7 OF 9

Sheet No.	Revision
LA06	R1



LEGEND FOR SHEETS LA01-LA08

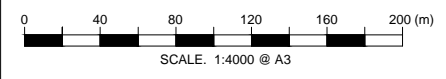
WATERWAYS	
PROPOSED STORMWATER BASINS	
EXISTING VEGETATION TO BE RETAINED	
PROPOSED NATIVE SCREEN PLANTING OF VARIOUS HEIGHTS	
PROPOSED GRASS	
PROPOSED LOW GROWING OR AMENITY PLANTING	
PROPOSED VEGETATED SWALE	
PROPOSED RIPARIAN OR STREAMSIDE PLANTING	
PROPOSED WETLAND PLANTING	
EXISTING LOCAL ACCESS WAYS OR WALKING/CYCLING PATHS	
PROPOSED SHARED PATH (PART OF PEKAPEKA TO OTAKI PROJECT)	
PROPOSED LOW BUNDING	
PROPOSED FENCE FOR VISUAL SCREENING	

MARY CREST

Revision	Amendment	Approved	Revision Date
R1	ISSUED FOR CONSENT	A.N.	MAR 2013



Project			
NEW ZEALAND TRANSPORT AGENCY PEKA PEKA TO NORTH OTAKI EXPRESSWAY FOR CONSENTING			
Sheet			
LANDSCAPE PLAN SHEET 8 OF 9			
Drawn	Designed	Approved	Revision Date
T. COX	T. COX	A. NICHOLLS	OCT 2012
Project No.	Scale	Drawing No.	Sheet No. Revision
5C1814.00	1:2000(A1), 1:4000(A3)	5/2664/1/6504	LA07 R1



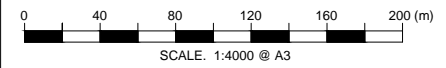


300 mm
200
100
50
0
10 mm
0



LEGEND FOR SHEETS LA01-LA08

- WATERWAYS
- PROPOSED STORMWATER BASINS
- EXISTING VEGETATION TO BE RETAINED
- PROPOSED NATIVE SCREEN PLANTING OF VARIOUS HEIGHTS
- PROPOSED GRASS
- PROPOSED LOW GROWING OR AMENITY PLANTING
- PROPOSED VEGETATED SWALE
- PROPOSED RIPARIAN OR STREAMSIDE PLANTING
- PROPOSED WETLAND PLANTING
- EXISTING LOCAL ACCESS WAYS OR WALKING/CYCLING PATHS
- PROPOSED SHARED PATH (PART OF PEKAPEKA TO OTAKI PROJECT)
- PROPOSED LOW BUNDING
- PROPOSED FENCE FOR VISUAL SCREENING



Revision	Amendment	Approved	Revision Date
R1	ISSUED FOR CONSENT	A.N.	MAR 2013

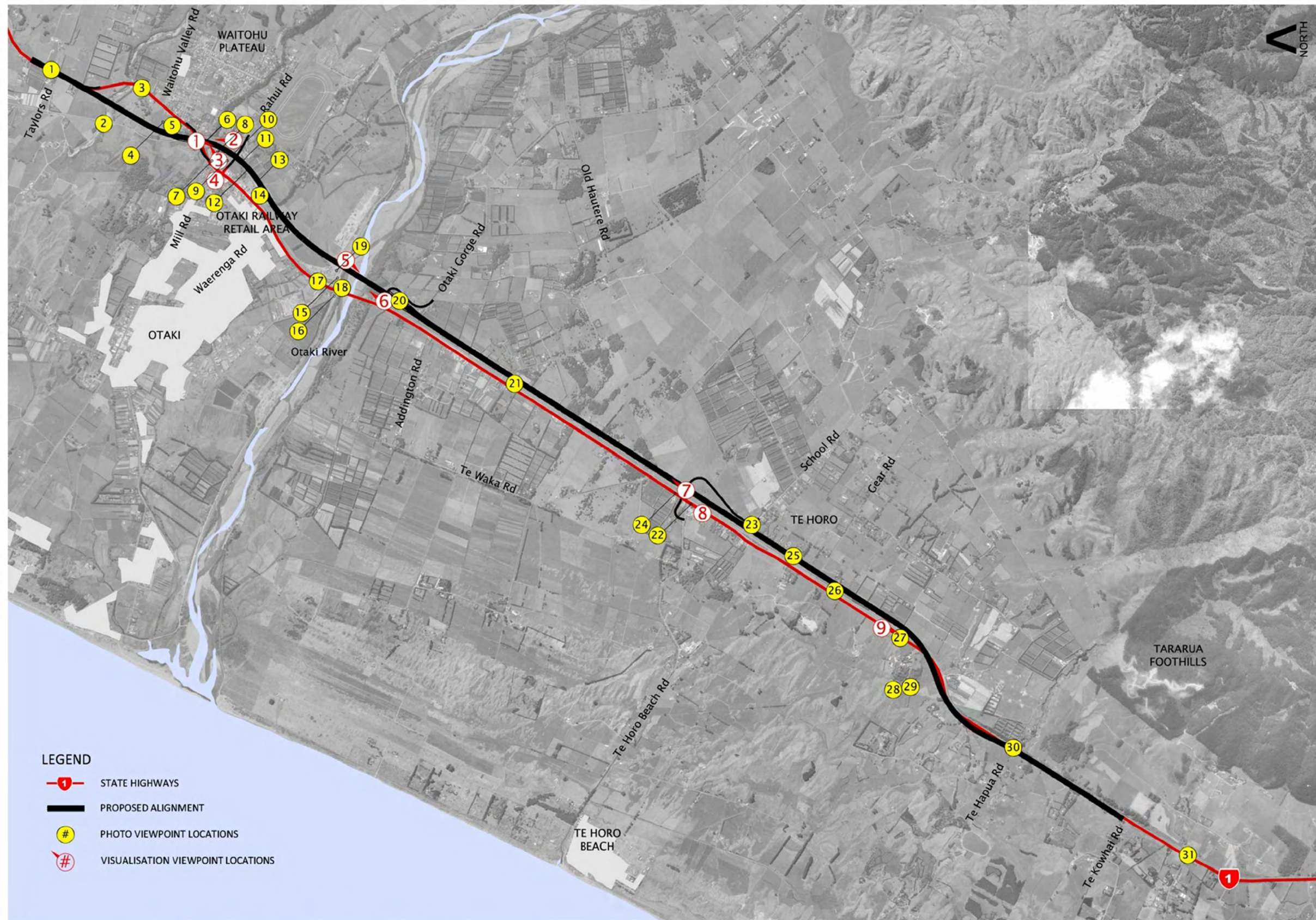


Project
**NEW ZEALAND TRANSPORT AGENCY
 PEKA PEKA TO NORTH OTAKI EXPRESSWAY
 FOR CONSENTING**

Drawn	Designed	Approved	Revision Date
T COX	T. COX	A. NICHOLLS	OCT 2012

Sheet
**LANDSCAPE PLAN
 SHEET 9 OF 9**

Project No.	Scale	Drawing No.	Sheet No.	Revision
5C1814.00	1:2000(A1), 1:4000(A3)	5/2664/1/6504	LA08	R1



- LEGEND**
- STATE HIGHWAYS
 - PROPOSED ALIGNMENT
 - PHOTO VIEWPOINT LOCATIONS
 - VISUALISATION VIEWPOINT LOCATIONS

Viewpoint Map

Revision	Amendment	Approved	Revision Date



Project
 NEW ZEALAND TRANSPORT AGENCY
 PEKA PEKA TO NORTH OTAKI EXPRESSWAY
 FOR CONSENTING

Drawn	Designed	Approved	Revision Date
CAD	D.M.	A.NICHOLLS	MAR 2013

Sheet
LANDSCAPE AND VISUAL ASSESSMENT
SHEET 1 OF 19

Project No.	Scale
5C1814.00	

Drawing No.	
5/2664/1/6504	

Sheet No.	Revision
LA09	R0

300 mm
200
100
50
10 mm
0



Photo 1: Taylors Rd to Waitohu Valley Rd – SH1/Taylor's Road intersection.
(Looking south – Expressway will continue directly south at end of straight and northern off-ramp to Ōtaki Township will follow existing SH1 alignment to left)



Photo 3: Taylors Rd to Waitohu Valley Rd – existing northern 'gateway' to Ōtaki
(Looking south to existing northern 'gateway' to Waitohu 'plateau' area of Ōtaki; existing SH1 alignment will form northern off-ramp to Ōtaki Township)



Photo 2: Taylors Rd to Waitohu Valley Rd – NIMT Railway/Waitohu Stream Bridge
(Looking east and upstream – Expressway will traverse from behind gravel stockpile in middle left across flat paddock in right of photo)



Photo 4: Taylors Rd to Waitohu Valley Rd – sand dune ridge west of existing SH1
(Looking north – Expressway will cut through the sand dune ridge in the area of the twin power poles and all of the immediate foreground would be in cut)

Revision	Amendment	Approved	Revision Date



Project
NEW ZEALAND TRANSPORT AGENCY
PEKA PEKA TO NORTH OTAKI EXPRESSWAY
FOR CONSENTING

Drawn	Designed	Approved	Revision Date
CAD	D.M.	A.NICHOLLS	MAR 2013

Sheet
LANDSCAPE AND VISUAL ASSESSMENT
SHEET 2 OF 19

Project No.	Scale
5C1814.00	

Drawing No.	Sheet No.	Revision
5/2664/1/6504	LA10	R0



Photo 5: Waitohu Valley Rd to Otaki Nth – sand dune ridge west of existing SH1
 (Looking south – Expressway will be in a cutting this sand dune ridge to existing SH1 railway overbridge in the middle distance of the photo; Railway Wetland in centre of photo)



Photo 7: Otaki Nth to Rahui Rd – land between Pare-o-Matangi Reserve and Otaki Motel
 (Looking west – existing SH1 in the background and Mangapouri stream to the right)



Photo 6: Waitohu Valley Rd to Otaki Nth – existing SH1 rail overbridge
 (Looking north –view from existing SH1 rail overbridge. Expressway will traverse through centre right of photo)



Photo 8: Otaki Nth to Rahui Rd – Mangapouri Stream
 (Looking west – view from walkway bridge within Pare-o-Matangi Reserve)

300 mm
200
100
50
10 mm
0

Revision	Amendment	Approved	Revision Date



Project
 NEW ZEALAND TRANSPORT AGENCY
 PEKA PEKA TO NORTH OTAKI EXPRESSWAY
 FOR CONSENTING

Sheet
 LANDSCAPE AND VISUAL ASSESSMENT
 SHEET 3 OF 19

Drawn	Designed	Approved	Revision Date
CAD	D.M.	A.NICHOLLS	MAR 2013

Project No.
 5C1814.00

Scale

Drawing No.
 5/2664/1/6504

Sheet No.	Revision
LA11	R0

300 mm
200
100
50
10 mm
0



Photo 9: Ōtaki North to Rahui Rd – Pare-o-Matangi Reserve
(Looking north – view of the Rahui Rd accessway to the reserve)



Photo 11: Rahui Rd to Waerenga Rd – Rahui Rd railway crossing south
(Looking south – Expressway will occupy the route of the existing NIMT railway)



Photo 10: Rahui Rd to Waerenga Rd – County Rd/Rahui Rd intersection
(Looking south – Former Rahui Milk Treatment Station in midground)

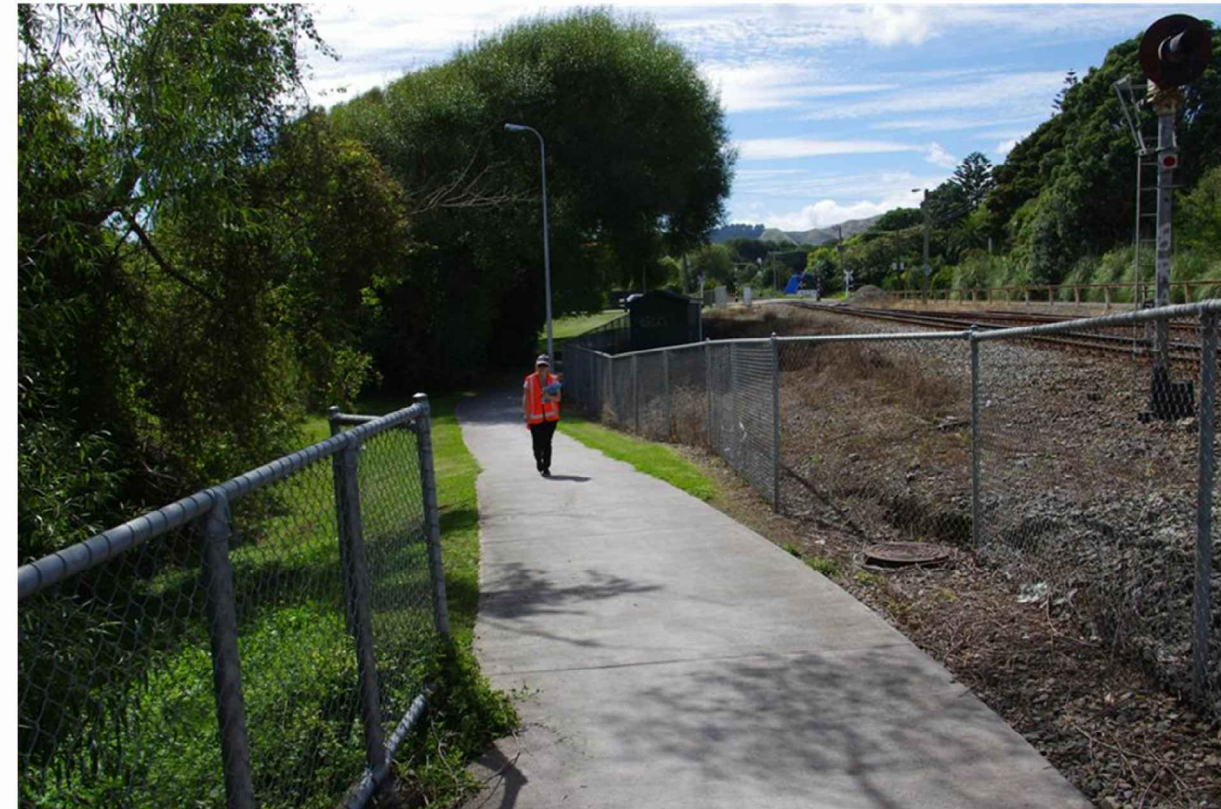


Photo 12: Rahui Rd to Waerenga Rd – Rahui Rd to Ōtaki Railway Station walkway
(Looking north –NIMT railway will traverse through left half with the Expressway to the right)

Revision	Amendment	Approved	Revision Date



Project
NEW ZEALAND TRANSPORT AGENCY
PEKA PEKA TO NORTH OTAKI EXPRESSWAY
FOR CONSENTING

Sheet
LANDSCAPE AND VISUAL ASSESSMENT
SHEET 4 OF 19

Drawn	Designed	Approved	Revision Date
CAD	D.M.	A.NICHOLLS	MAR 2013

Project No.	Scale
5C1814.00	

Drawing No.	Sheet No.	Revision
5/2664/1/6504	LA12	R0



Photo 13: Rahui Rd to Waerenga Rd – Ōtaki Railway Station area
 (Looking north – Expressway will traverse through across far side of railway land/shelterbelt area)



Photo 14: Rahui Rd to Waerenga Rd – southern end of Ōtaki Railway Station area
 (Looking north – Expressway will traverse through the shelterbelt and land immediately beyond)



Photo 15: Waerenga Rd to Ōtaki River – Winstone Aggregate area
 (Looking north – Expressway will traverse across the land immediately beyond the screening plant)

300 mm
200
100
50
10 mm
0

Revision	Amendment	Approved	Revision Date



Project			
NEW ZEALAND TRANSPORT AGENCY PEKA PEKA TO NORTH OTAKI EXPRESSWAY FOR CONSENTING			
Sheet			
LANDSCAPE AND VISUAL ASSESSMENT SHEET 5 OF 19			
Drawn	Designed	Approved	Revision Date
CAD	D.M.	A.NICHOLLS	MAR 2013
Project No.	Scale		Drawing No.
5C1814.00			5/2664/1/6504
Sheet No.			Revision
LA13			R0

300 mm
200
100
50
10 mm
0



Photo 16: Otaki River – existing SH1 bridge downstream
(Looking south – Downstream rest area partially visible on south bank)



Photo 18: Otaki River – NIMT railway bridge upstream
(Looking south – Expressway will cross river on left aspect of photo and transverse through vegetation on south bank)



Photo 17: Otaki River – area between the bridges
(Looking south – access roads to aggregate plant and concrete batching plant in midground of photo)



Photo 19: Otaki River – Otaki River upstream of railway bridge
(Looking south east – Expressway will cross river in the midground)

Revision	Amendment	Approved	Revision Date



Drawn	Designed	Approved	Revision Date
CAD	D.M.	A.NICHOLLS	MAR 2013

Project No.	Scale
5C1814.00	

Project NEW ZEALAND TRANSPORT AGENCY PEKA PEKA TO NORTH OTAKI EXPRESSWAY FOR CONSENTING			
Sheet LANDSCAPE AND VISUAL ASSESSMENT SHEET 6 OF 19			
Drawing No.	Sheet No.	Revision	
5/2664/1/6504	LA14	R0	

300 mm
200
100
50
10 mm
0



Photo 20: Otaki River to Addington Rd – Otaki Gorge Rd rail overbridge south
(Looking south – Expressway will rise from cut to traverse south at grade through centre left of photo)



Photo 22: Te Waka Rd to south of Gear Rd – Te Horo Beach Rd intersection
(Looking south – existing SH 1 and Te Horo Beach Road intersection in foreground)



Photo 21: Addington Rd to Te Waka Rd – Te Horo Straight
(Looking south – Old Hautere Road area south)



Photo 23: Te Waka Rd to south of Gear Rd – School Road north
(Looking north – School Road in centre right, existing SH1 immediately north of Red Café in left of photo)

Revision	Amendment	Approved	Revision Date



Project
NEW ZEALAND TRANSPORT AGENCY
PEKA PEKA TO NORTH OTAKI EXPRESSWAY
FOR CONSENTING

Sheet
LANDSCAPE AND VISUAL ASSESSMENT
SHEET 7 OF 19

Drawn	Designed	Approved	Revision Date
CAD	D.M.	A.NICHOLLS	MAR 2013

Project No.	Scale
5C1814.00	

Drawing No.	Sheet No.	Revision
5/2664/1/6504	LA15	R0

300 mm
200
100
50
10 mm
0



Photo 24: Te Waka Rd to south of Gear Rd – Te Horo/Red Café area
(Looking south – NIMT railway to left, Red Café at centre right of photo)



Photo 26: South of Gear Rd to north of Te Hapua Rd – Te Horo Straight south
(Looking south – Expressway will traverse left half of photo)



Photo 25: Te Waka Rd to south of Gear Rd – Gear Road north
(Looking north - Expressway will traverse along local road alignment/shelterbelt area)



Photo 27: South of Gear Rd to north of Te Hapua Rd – Mary Crest corner north
(Looking north – south end of Te Horo straight; Expressway will be on east side of NIMT railway)

Revision	Amendment	Approved	Revision Date



Project
NEW ZEALAND TRANSPORT AGENCY
PEKA PEKA TO NORTH OTAKI EXPRESSWAY
FOR CONSENTING

Sheet
LANDSCAPE AND VISUAL ASSESSMENT
SHEET 8 OF 19

Drawn	Designed	Approved	Revision Date
CAD	D.M.	A.NICHOLLS	MAR 2013

Project No.	Scale
5C1814.00	

Drawing No.	Sheet No.	Revision
5/2664/1/6504	LA16	R0

300 mm
200
100
50
10 mm
0



Photo 28: South of Gear Rd to north of Te Hapua Rd – Mary Crest swamp forest remnant (Looking north – Mary Crest buildings are beyond forest)



Photo 29: South of Gear Rd to north of Te Hapua Rd – Mary Crest swamp forest remnant Looking south – new arterial road and Expressway will transverse centre midground of photo beyond dune ridges)



Photo 30: North of Te Hapua Rd to Te Kowhai Rd – Te Hapua Road intersection (Looking north – Te Hapua Road intersection in foreground)



Photo 31: North of Te Hapua Rd to Te Kowhai Rd - north to Te Kowhai Road (Looking north – Expressway will transverse left half of photo)

Revision	Amendment	Approved	Revision Date



Project
NEW ZEALAND TRANSPORT AGENCY
PEKA PEKA TO NORTH OTAKI EXPRESSWAY
FOR CONSENTING

Sheet
LANDSCAPE AND VISUAL ASSESSMENT
SHEET 9 OF 19

Drawn	Designed	Approved	Revision Date
CAD	D.M.	A.NICHOLLS	MAR 2013

Project No.	Scale
5C1814.00	

Drawing No.	Sheet No.	Revision
5/2664/1/6504	LA17	R0

View 1



Viewpoint 1: 'Before' photograph



Viewpoint 1: 'After' visualisation

300 mm
200
100
50
10 mm
0

Revision	Amendment	Approved	Revision Date



Project
NEW ZEALAND TRANSPORT AGENCY
PEKA PEKA TO NORTH OTAKI EXPRESSWAY
FOR CONSENTING

Sheet
LANDSCAPE AND VISUAL ASSESSMENT
SHEET 10 OF 19

Drawn	Designed	Approved	Revision Date
CAD	D.M.	A.NICHOLLS	MAR 2013

Project No.	Scale
5C1814.00	

Drawing No.	Sheet No.	Revision
5/2664/1/6504	LA18	R0

View 2



Viewpoint 2: 'Before' photograph



Viewpoint 2: 'After' visualisation

300 mm
200
100
50
10 mm
0

Revision	Amendment	Approved	Revision Date



Project
NEW ZEALAND TRANSPORT AGENCY
PEKA PEKA TO NORTH OTAKI EXPRESSWAY
FOR CONSENTING

Sheet
LANDSCAPE AND VISUAL ASSESSMENT
SHEET 11 OF 19

Drawn	Designed	Approved	Revision Date
CAD	D.M.	A.NICHOLLS	MAR 2013

Project No.
5C1814.00

Scale

Drawing No.
5/2664/1/6504

Sheet No.	Revision
LA19	R0

View 3



Viewpoint 3: 'Before' photograph



Viewpoint 3: 'After' visualisation

300 mm
200
100
50
10 mm
0

Revision	Amendment	Approved	Revision Date



Project
NEW ZEALAND TRANSPORT AGENCY
PEKA PEKA TO NORTH OTAKI EXPRESSWAY
FOR CONSENTING

Sheet
LANDSCAPE AND VISUAL ASSESSMENT
SHEET 12 OF 19

Drawn	Designed	Approved	Revision Date
CAD	D.M.	A.NICHOLLS	MAR 2013

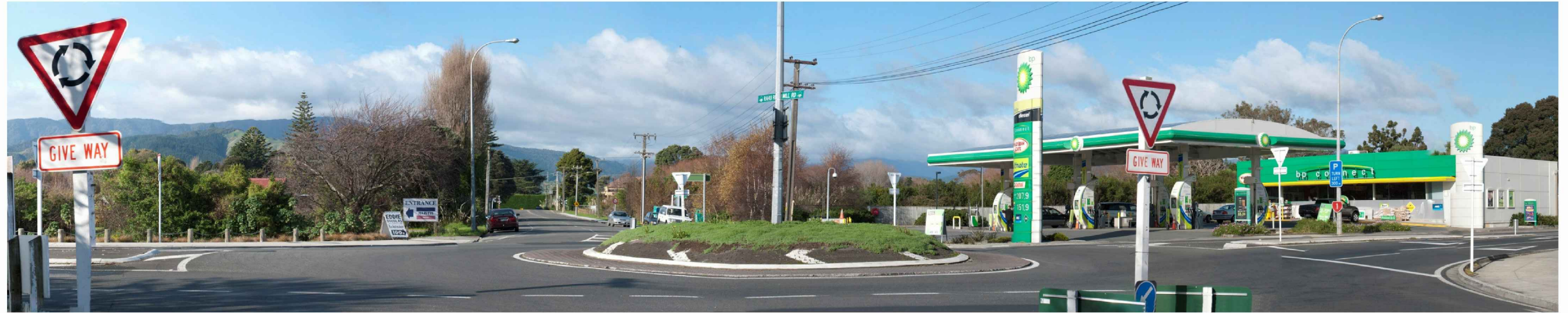
Project No.
5C1814.00

Scale

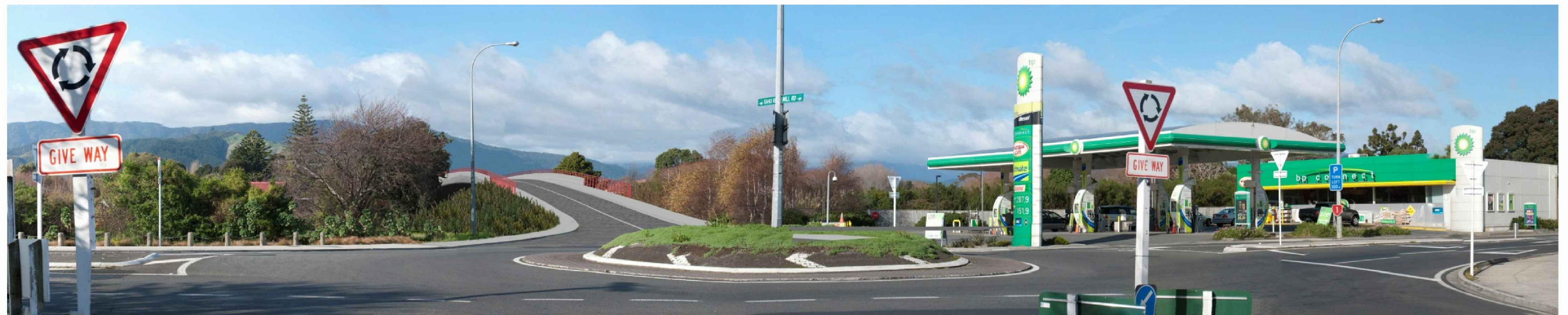
Drawing No.
5/2664/1/6504

Sheet No.	Revision
LA20	R0

View 4



Viewpoint 4: 'Before' photograph



Viewpoint 4: 'After' visualisation

300 mm
200
100
50
10 mm
0
millimetre

Revision	Amendment	Approved	Revision Date



Project
NEW ZEALAND TRANSPORT AGENCY
PEKA PEKA TO NORTH OTAKI EXPRESSWAY
FOR CONSENTING

Sheet
LANDSCAPE AND VISUAL ASSESSMENT
SHEET 13 OF 19

Drawn	Designed	Approved	Revision Date
CAD	D.M.	A.NICHOLLS	MAR 2013

Project No.	Scale
5C1814.00	

Drawing No.	Sheet No.	Revision
5/2664/1/6504	LA21	R0

View 5

300 mm
200
100
50
10 mm
0



Viewpoint 5: 'Before' photograph



Viewpoint 5: 'After' visualisation

Revision	Amendment	Approved	Revision Date



Project
NEW ZEALAND TRANSPORT AGENCY
PEKA PEKA TO NORTH OTAKI EXPRESSWAY
FOR CONSENTING

Sheet
LANDSCAPE AND VISUAL ASSESSMENT
SHEET 14 OF 19

Drawn	Designed	Approved	Revision Date
CAD	D.M.	A.NICHOLLS	MAR 2013

Project No.
5C1814.00

Scale

Drawing No.
5/2664/1/6504

Sheet No.	Revision
LA22	R0

View 6



Viewpoint 6: 'Before' photograph



Viewpoint 6: 'After' visualisation

300 mm
200
100
50
10 mm
0

Revision	Amendment	Approved	Revision Date



Project
NEW ZEALAND TRANSPORT AGENCY
PEKA PEKA TO NORTH OTAKI EXPRESSWAY
FOR CONSENTING

Sheet
LANDSCAPE AND VISUAL ASSESSMENT
SHEET 15 OF 19

Drawn	Designed	Approved	Revision Date
CAD	D.M.	A.NICHOLLS	MAR 2013

Project No.	Scale
5C1814.00	

Drawing No.	Sheet No.	Revision
5/2664/1/6504	LA23	R0

View 7



Viewpoint 7: 'Before' photograph



Viewpoint 7: 'After' visualisation

300 mm
200
100
50
10 mm
0

Revision	Amendment	Approved	Revision Date



Project			
NEW ZEALAND TRANSPORT AGENCY PEKA PEKA TO NORTH OTAKI EXPRESSWAY FOR CONSENTING			
Sheet			
LANDSCAPE AND VISUAL ASSESSMENT SHEET 16 OF 19			
Drawn	Designed	Approved	Revision Date
CAD	D.M.	A.NICHOLLS	MAR 2013
Project No.	Scale		Drawing No.
5C1814.00			5/2664/1/6504
Sheet No.			Revision
LA24			R0

View 8



Viewpoint 8: 'Before' photograph



Viewpoint 8: 'After' visualisation



Viewpoint 8A: 'After' visualisation

300 mm
200
100
50
10 mm
0

Revision	Amendment	Approved	Revision Date



Project
NEW ZEALAND TRANSPORT AGENCY
PEKA PEKA TO NORTH OTAKI EXPRESSWAY
FOR CONSENTING

Sheet
LANDSCAPE AND VISUAL ASSESSMENT
SHEET 17 OF 19

Drawn	Designed	Approved	Revision Date
CAD	D.M.	A.NICHOLLS	MAR 2013

Project No.	Scale
5C1814.00	

Drawing No.	Sheet No.	Revision
5/2664/1/6504	LA25	R0

View 9



Viewpoint 9: 'Before' photograph



Viewpoint 9: 'After' visualisation

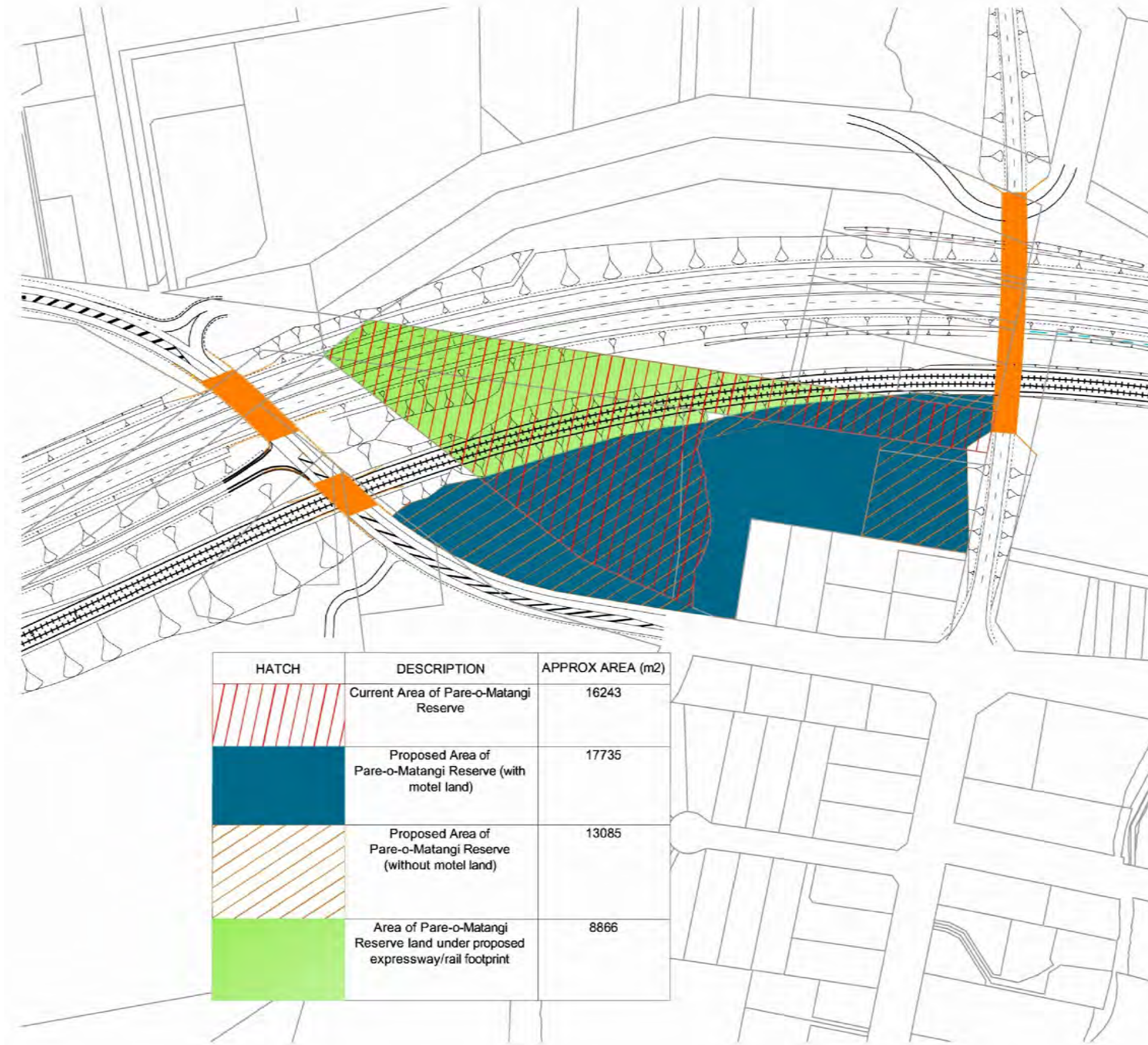
300 mm
200
100
50
10 mm
0

Revision	Amendment	Approved	Revision Date



Project			
NEW ZEALAND TRANSPORT AGENCY PEKA PEKA TO NORTH OTAKI EXPRESSWAY FOR CONSENTING			
Sheet			
LANDSCAPE AND VISUAL ASSESSMENT SHEET 18 OF 19			
Drawn	Designed	Approved	Revision Date
CAD	D.M.	A.NICHOLLS	MAR 2013
Project No.	Scale		Drawing No.
5C1814.00			5/2664/1/6504
Sheet No.			Revision
LA26			R0

300 mm
200
100
50
10 mm
0



Pare-o-Matangi Reserve Areas

Revision	Amendment	Approved	Revision Date



Project
NEW ZEALAND TRANSPORT AGENCY
PEKA PEKA TO NORTH OTAKI EXPRESSWAY
FOR CONSENTING

Sheet
LANDSCAPE AND VISUAL ASSESSMENT
SHEET 19 OF 19

Drawn	Designed	Approved	Revision Date
CAD	D.M.	A.NICHOLLS	MAR 2013

Project No.	Scale
5C1814.00	

Drawing No.	Sheet No.	Revision
5/2664/1/6504	LA27	R0