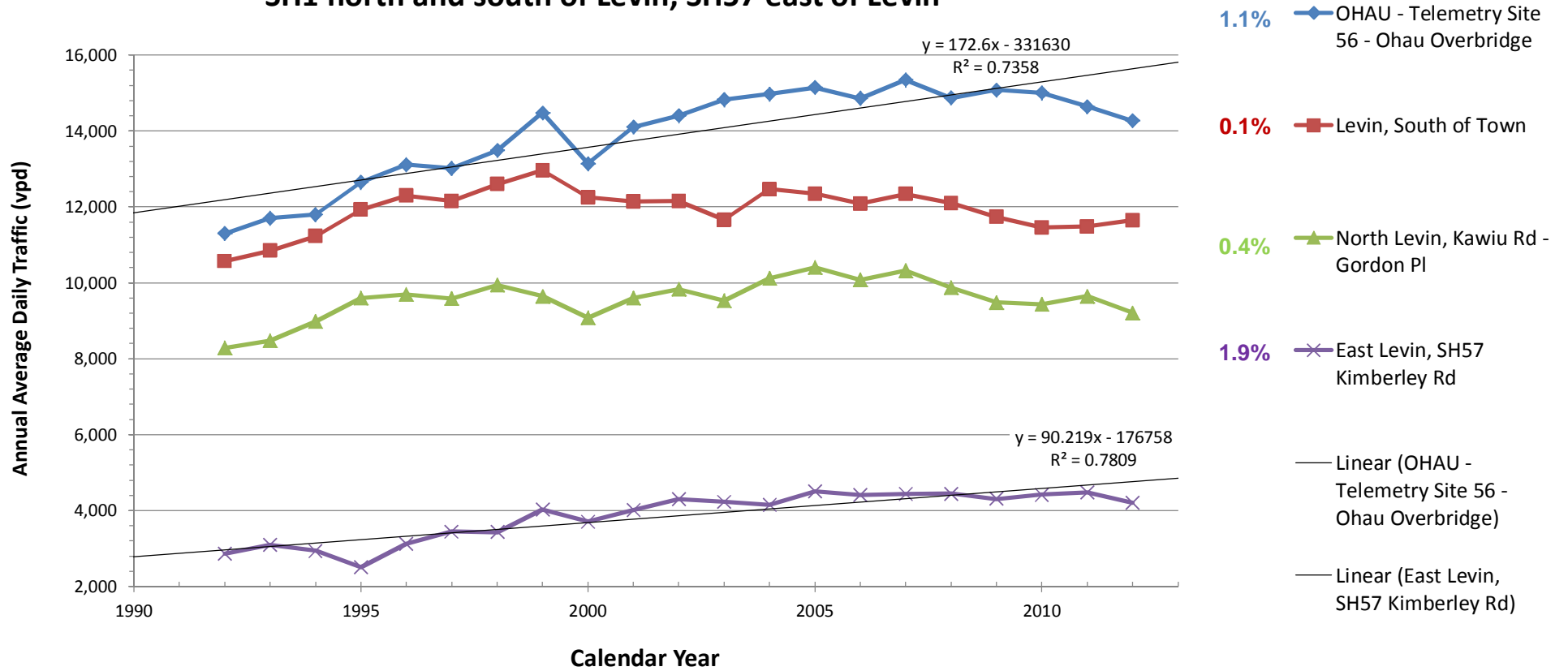
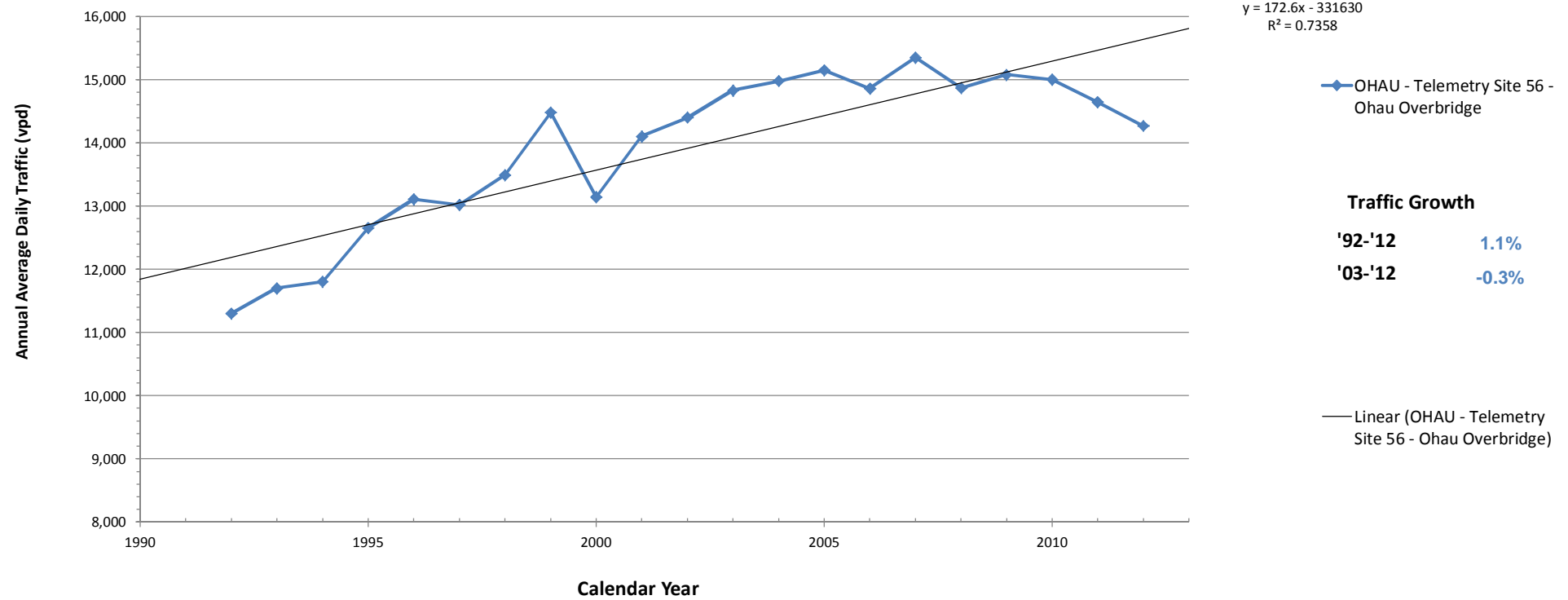


## Traffic Growth 1992 to 2012

### SH1 north and south of Levin, SH57 east of Levin



**Traffic Growth 1992 to 2012**  
**SH1 South of Levin**  
**Oahu Telemetry Site**



<b>TRAFFIC GROWTH 1992-2012</b>					
<b>Annual Average Daily Traffic (vpd)</b>	As published 2012				
	1N/988	1N/984	1N/979	57/02	
<b>Calendar Year</b>	<b>OHAU - Telemetry Site 56 - Ohau Overbridge</b>	Levin, South of Town	North Levin, Kawiu Rd - Gordon Pl	East Levin, SH57 Kimberley Rd	
1992	11300	10570	8290	2870	
1993	11700	10850	8470	3100	
1994	11800	11230	8980	2940	
1995	12650	11930	9600	2510	
1996	13110	12300	9690	3130	
1997	13020	12160	9590	3450	
1998	13490	12600	9940	3430	
1999	14480	12960	9650	4030	
2000	13140	12250	9080	3710	
2001	14104	12143	9600	4012	
2002	14399	12157	9837	4302	
2003	14831	11662	9524	4227	
2004	14977	12467	10124	4153	
2005	15145	12343	10401	4512	
2006	14860	12085	10079	4414	
2007	15347	12341	10323	4443	
2008	14872	12098	9871	4445	
2009	15080	11737	9486	4304	
2010	15004	11458	9439	4421	
2011	14643	11484	9647	4475	
2012	14269	11647	9211	4205	
2023					
Lin Reg start yr	1992	1992	1992	1992	
end yr	2012	2012	2012	2012	
<b>Continuous data</b>					
std err slope	23.7	21.1	17.3	11.0	
slope	172.6	16.5	41.9	90.2	
R square	0.736	0.031	0.235	0.781	
beg yr est	12189.3	11762.5	9144.6	2958.9	
end yr est	15641.3	12092.0	9982.2	4763.3	
% wrt end yr	1.1%	0.1%	0.4%	1.9%	
% wrt end yr+1	1.1%	0.1%	0.4%	1.9%	
<b>Missing data</b>					
beg yr est	12189.3	11762.5	9144.6	2958.9	
end yr est	15641.3	12092.0	9982.2	4763.3	
slope	172.6	16.5	41.9	90.2	
% wrt end yr	1.1%	0.1%	0.4%	1.9%	
% wrt end yr+1	1.1%	0.1%	0.4%	1.9%	

<b>TRAFFIC GROWTH 2003-2012</b>					
<b>Annual Average Daily Traffic (vpd)</b>	As published 2012				
	1N/988	1N/984	1N/979	57/02	
<b>Calendar Year</b>	<b>OHAU - Telemetry Site 56 - Ohau Overbridge</b>	Levin, South of Town	North Levin, Kawiu Rd - Gordon PI	East Levin, SH57 Kimberley Rd	
1992	11300	10570	8290	2870	
1993	11700	10850	8470	3100	
1994	11800	11230	8980	2940	
1995	12650	11930	9600	2510	
1996	13110	12300	9690	3130	
1997	13020	12160	9590	3450	
1998	13490	12600	9940	3430	
1999	14480	12960	9650	4030	
2000	13140	12250	9080	3710	
2001	14104	12143	9600	4012	
2002	14399	12157	9837	4302	
2003	14831	11662	9524	4227	
2004	14977	12467	10124	4153	
2005	15145	12343	10401	4512	
2006	14860	12085	10079	4414	
2007	15347	12341	10323	4443	
2008	14872	12098	9871	4445	
2009	15080	11737	9486	4304	
2010	15004	11458	9439	4421	
2011	14643	11484	9647	4475	
2012	14269	11647	9211	4205	
2023					
Lin Reg start yr	<b>2003</b>	<b>2003</b>	<b>2003</b>	<b>2003</b>	
end yr	<b>2012</b>	<b>2012</b>	<b>2012</b>	<b>2012</b>	
<b>Continuous data</b>					
std err slope	29.9	34.8	38.3	14.6	
slope	-48.0	-77.1	-80.0	7.7	
R square	0.243	0.380	0.353	0.034	
beg yr est	15118.7	12279.3	10170.4	4325.2	
end yr est	14686.9	11585.1	9450.6	4394.6	
% wrt end yr	-0.3%	-0.7%	-0.8%	0.2%	
% wrt end yr+1	<b>-0.3%</b>	<b>-0.7%</b>	<b>-0.9%</b>	<b>0.2%</b>	
<b>Missing data</b>					
beg yr est	15118.7	12279.3	10170.4	4325.2	
end yr est	14686.9	11585.1	9450.6	4394.6	
slope	-48.0	-77.1	-80.0	7.7	
% wrt end yr	-0.3%	-0.7%	-0.8%	0.2%	
% wrt end yr+1	<b>-0.3%</b>	<b>-0.7%</b>	<b>-0.9%</b>	<b>0.2%</b>	

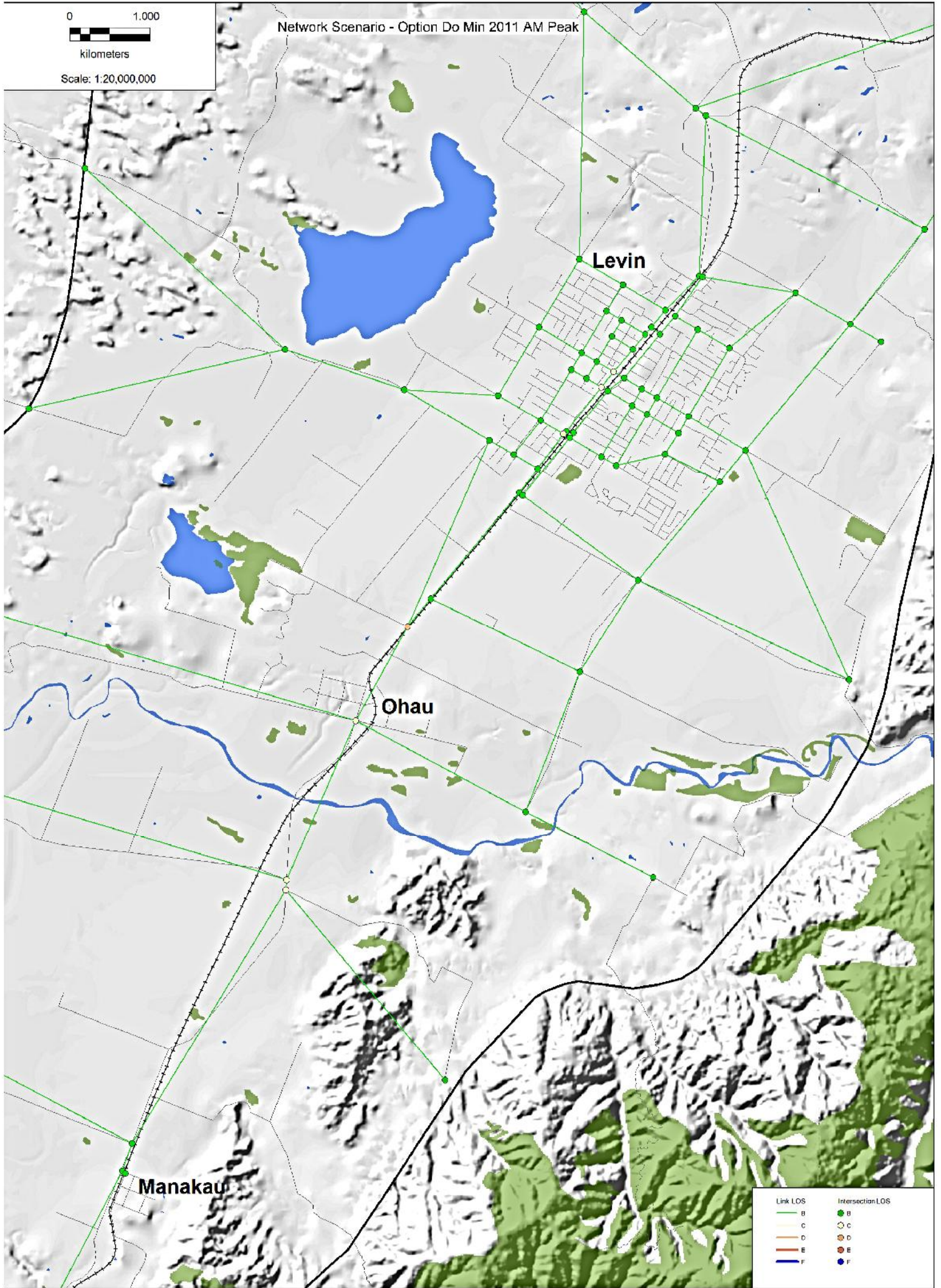
Network Scenario - Option Do Min 2011 AM Peak

0 1.000



kilometers

Scale: 1:20,000,000



Levin

Ohau

Manakau

Link LOS

B

C

D

E

F

Intersection LOS

B

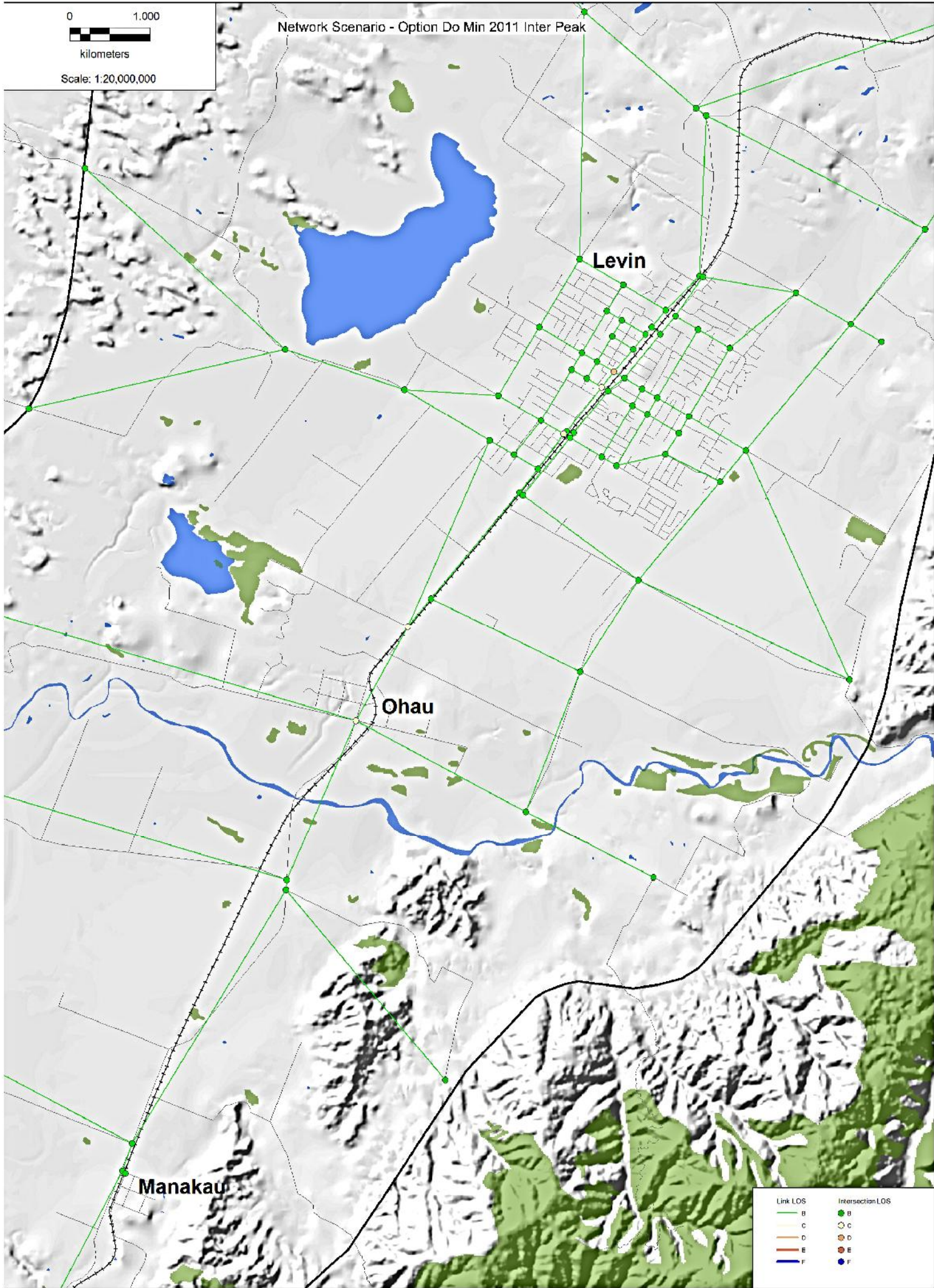
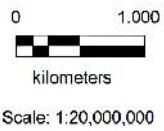
C

D

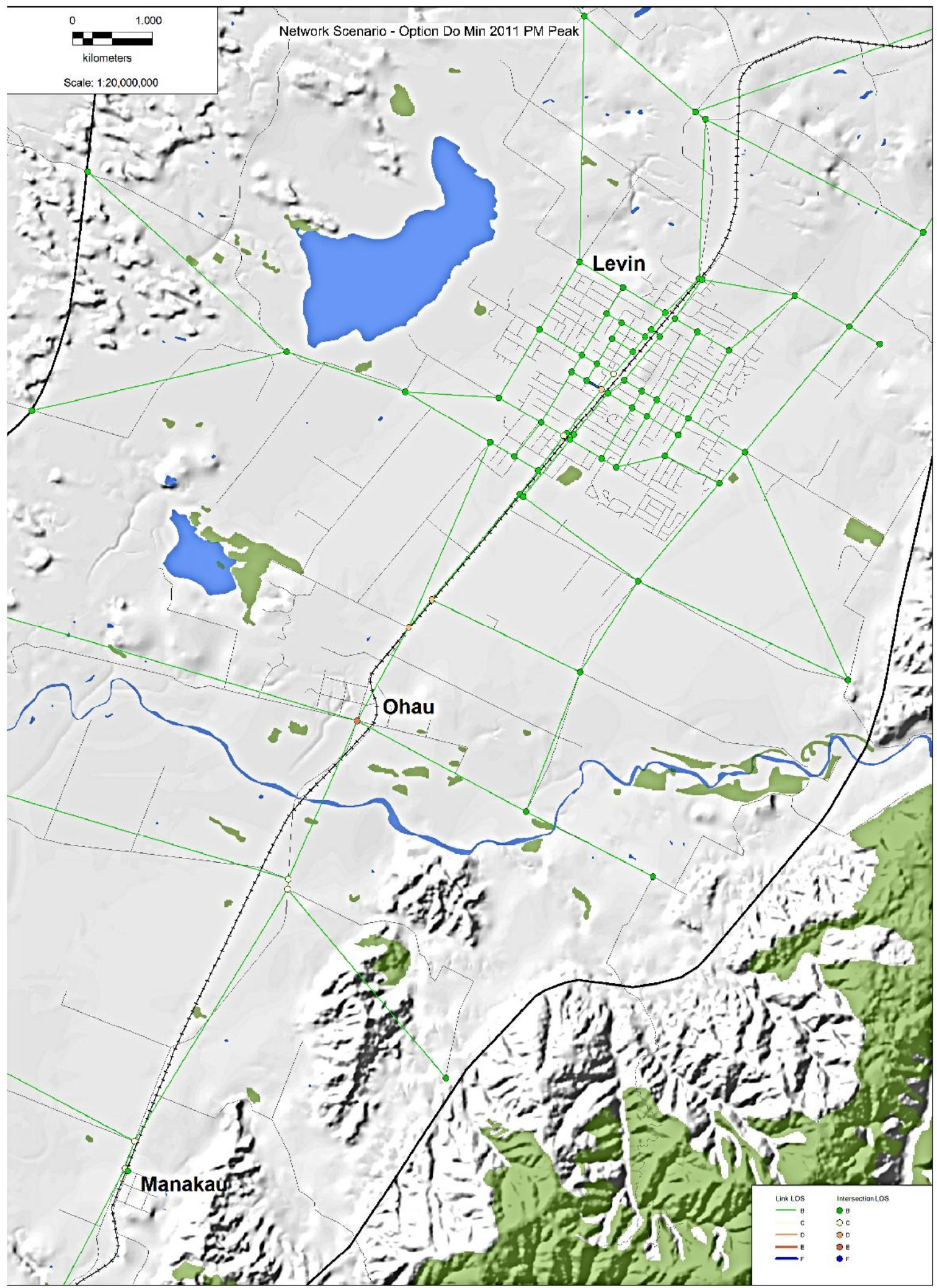
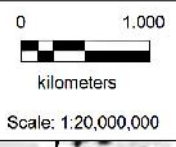
E

F

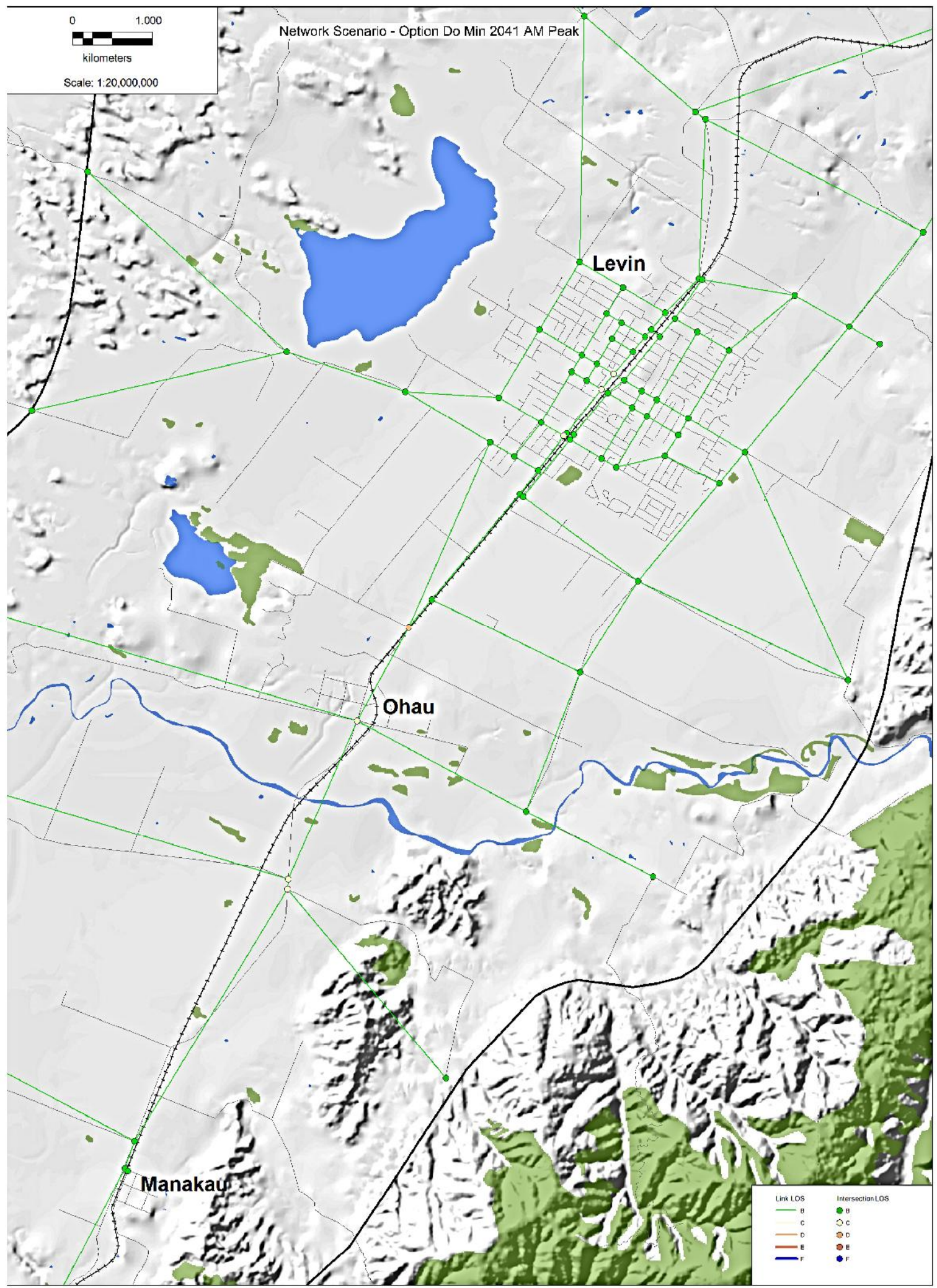
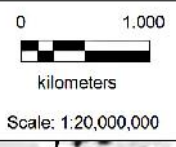
Network Scenario - Option Do Min 2011 Inter Peak



Network Scenario - Option Do Min 2011 PM Peak



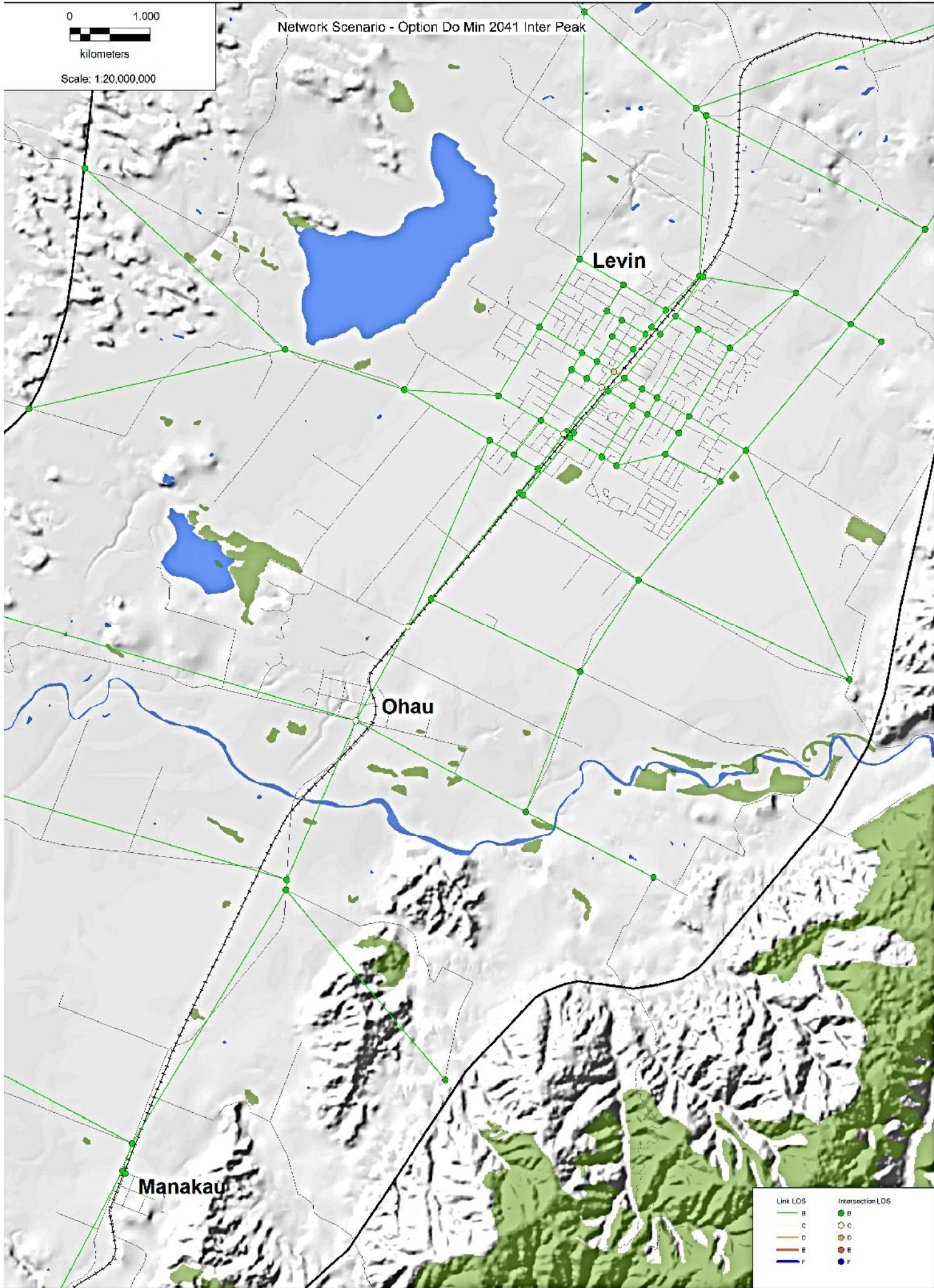
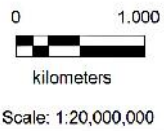
Network Scenario - Option Do Min 2041 AM Peak



Link LOS	Intersection LOS
B	B
C	C
D	D
E	E
F	F



Network Scenario - Option Do Min 2041 Inter Peak



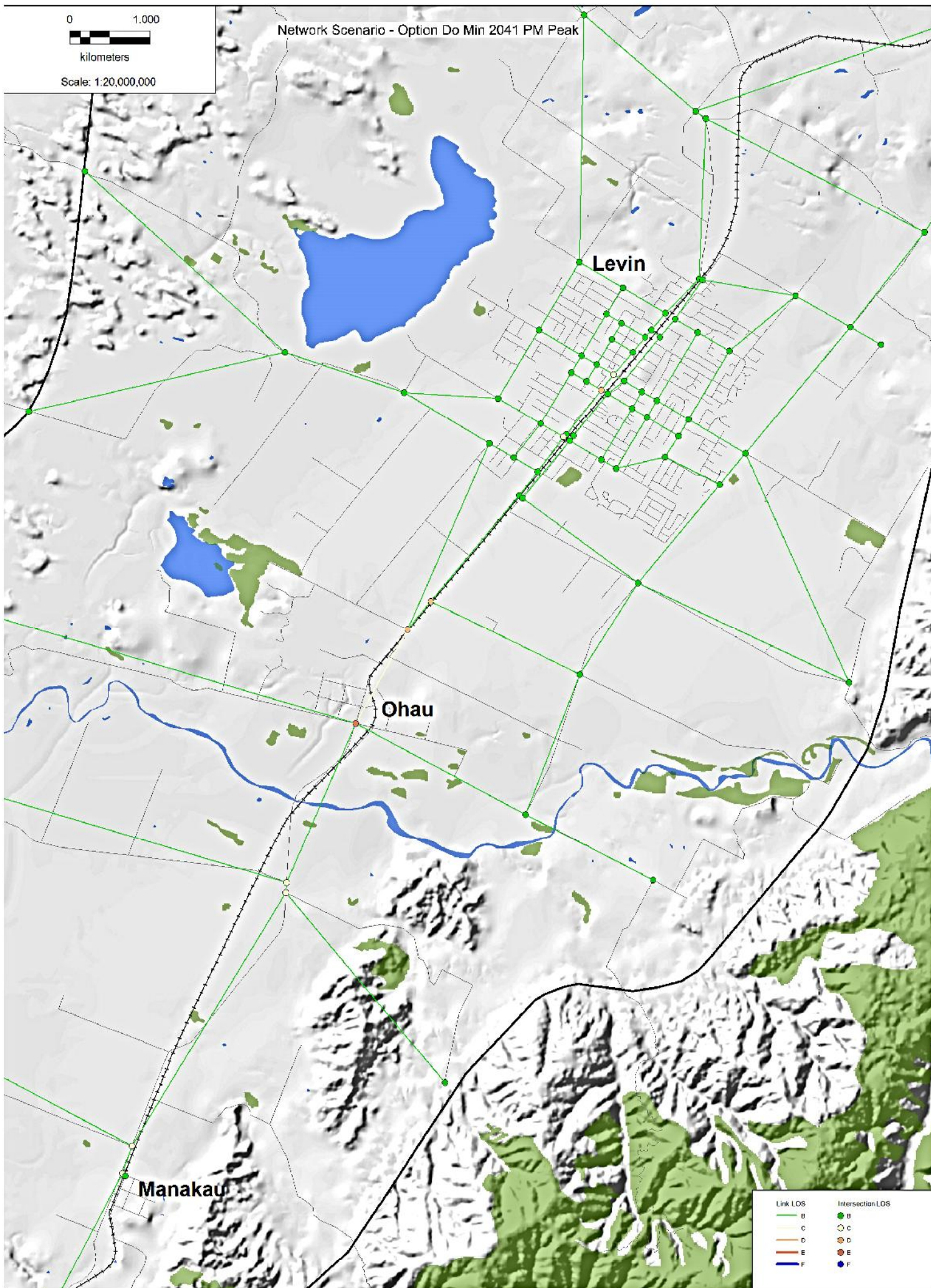
Network Scenario - Option Do Min 2041 PM Peak

0 1.000



kilometers

Scale: 1:20,000,000



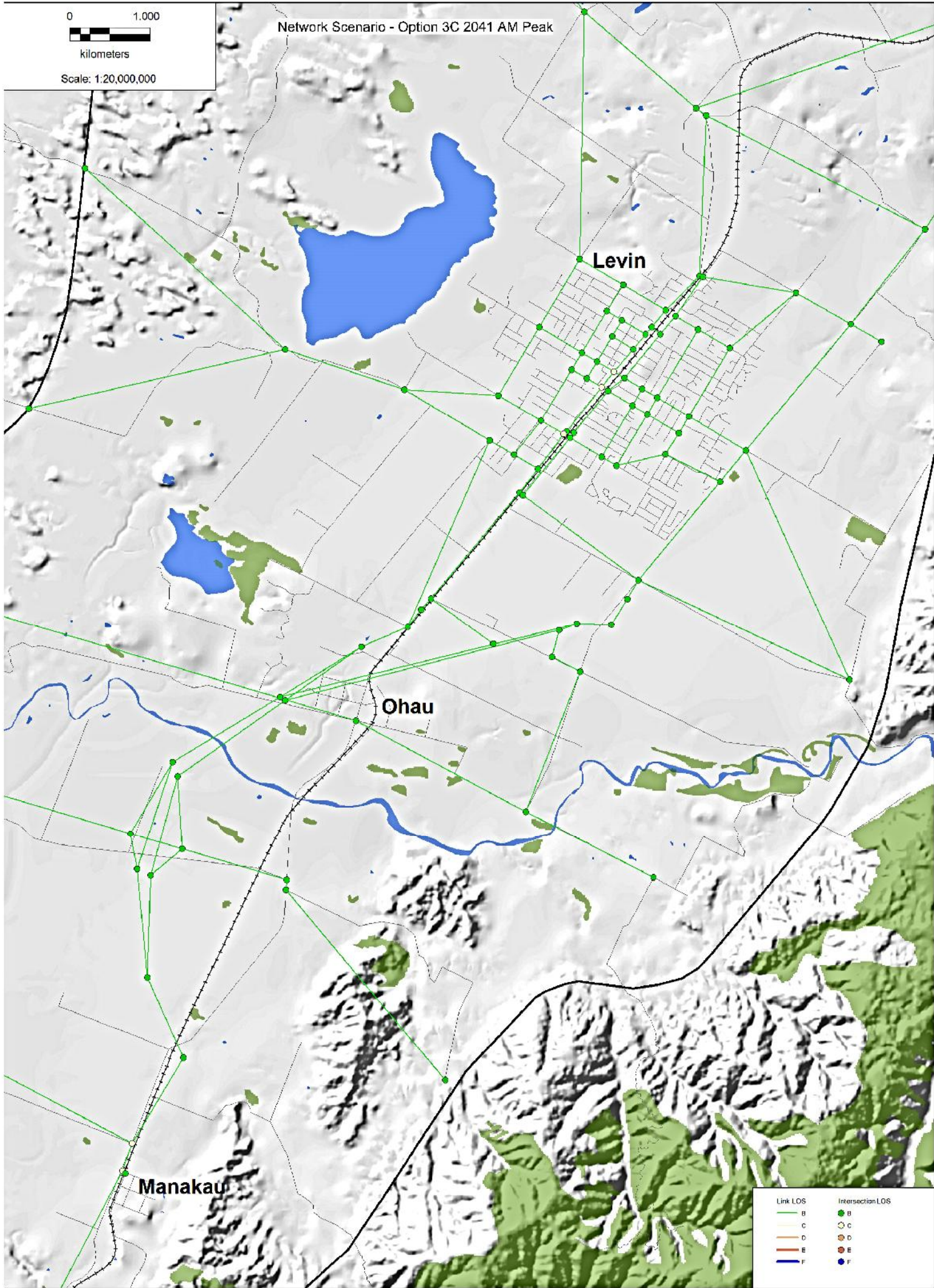
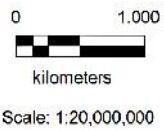
Levin

Ohau

Manakau

Link LOS	Intersection LOS
B	B
C	C
D	D
E	E
F	F

Network Scenario - Option 3C 2041 AM Peak



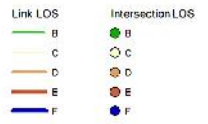
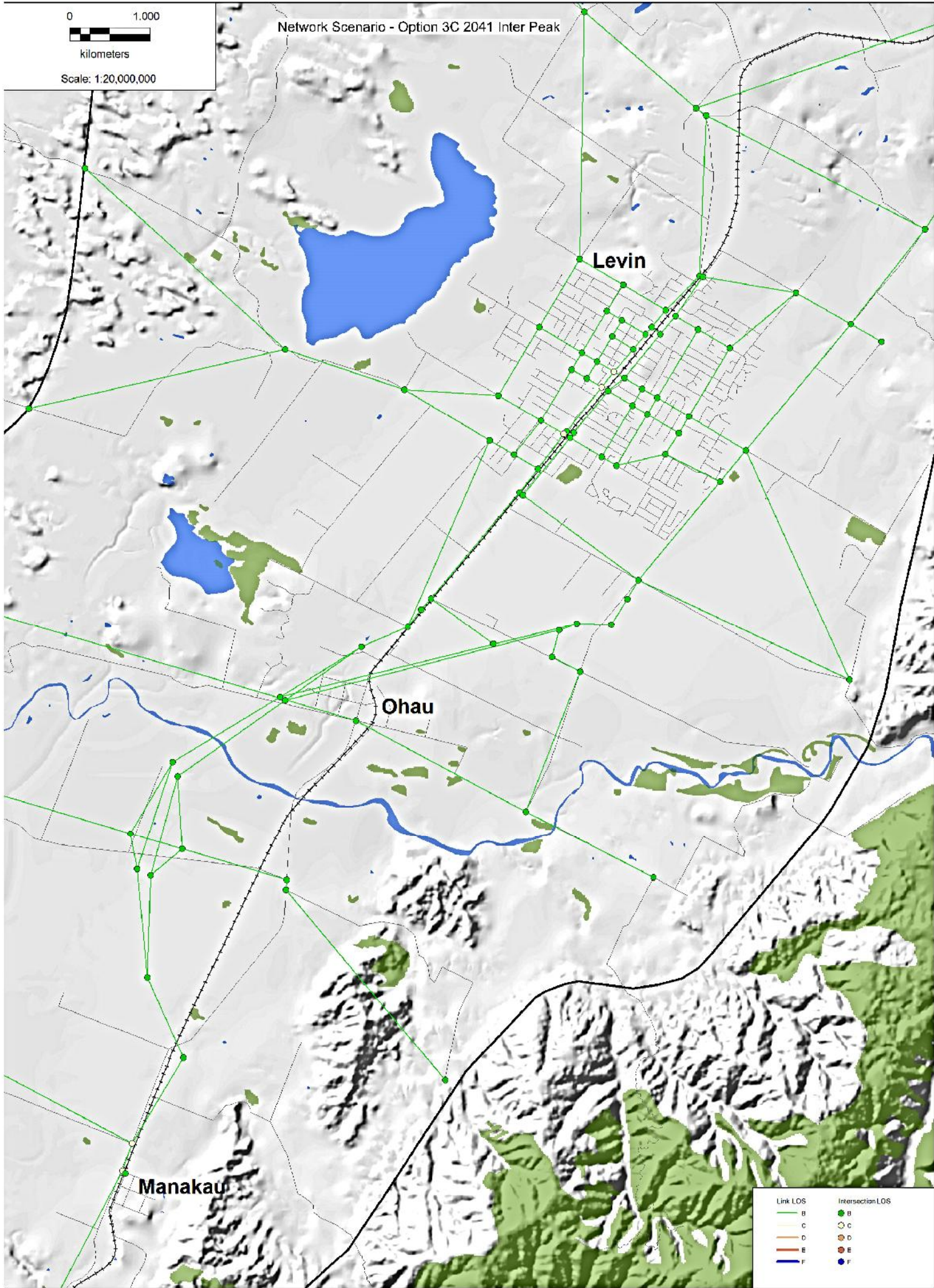
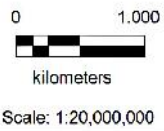
Levin

Ohau

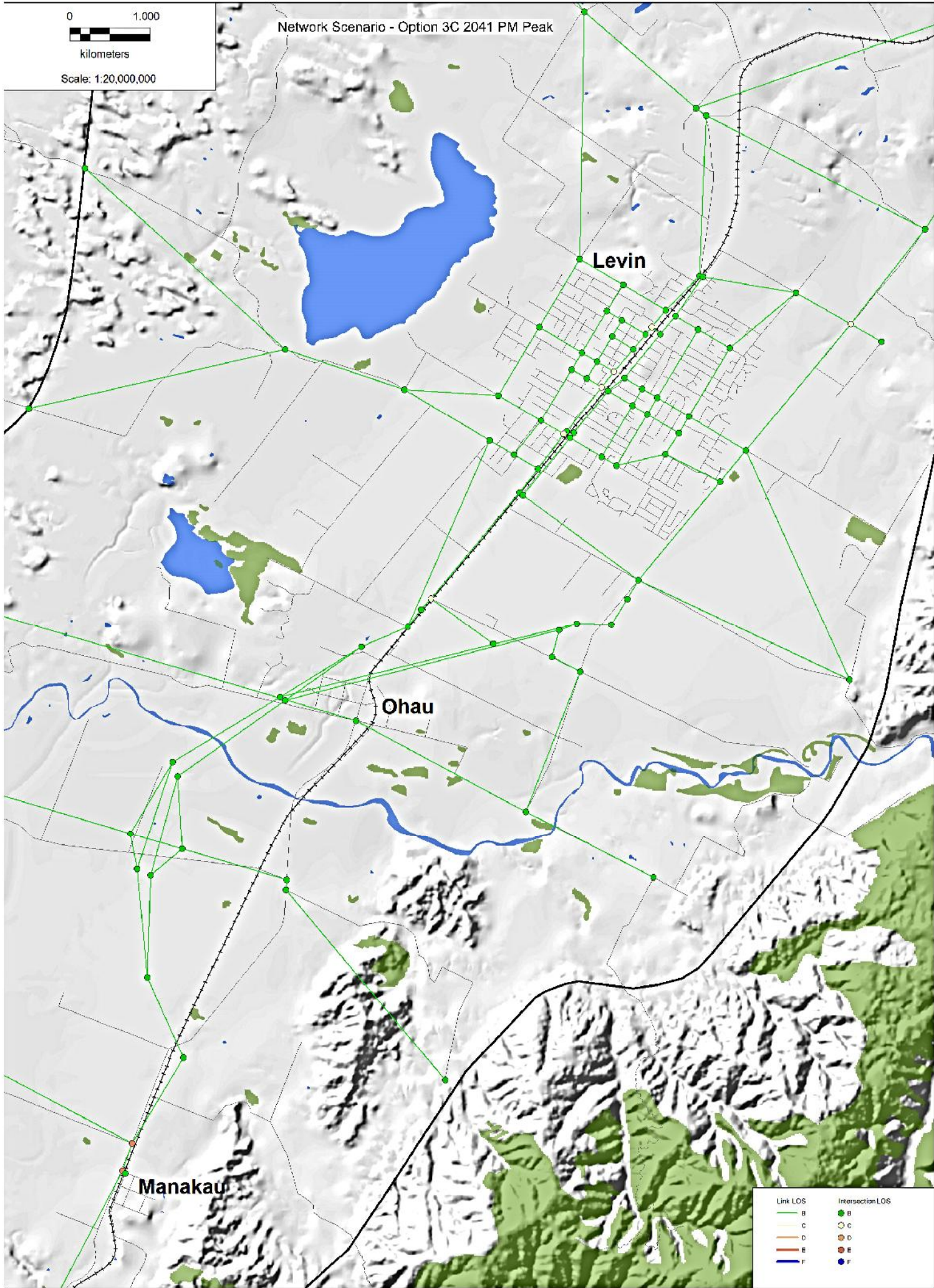
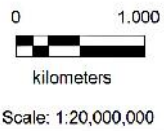
Manakau

Link LOS	Intersection LOS
B	B
C	C
D	D
E	E
F	F

Network Scenario - Option 3C 2041 Inter Peak



Network Scenario - Option 3C 2041 PM Peak



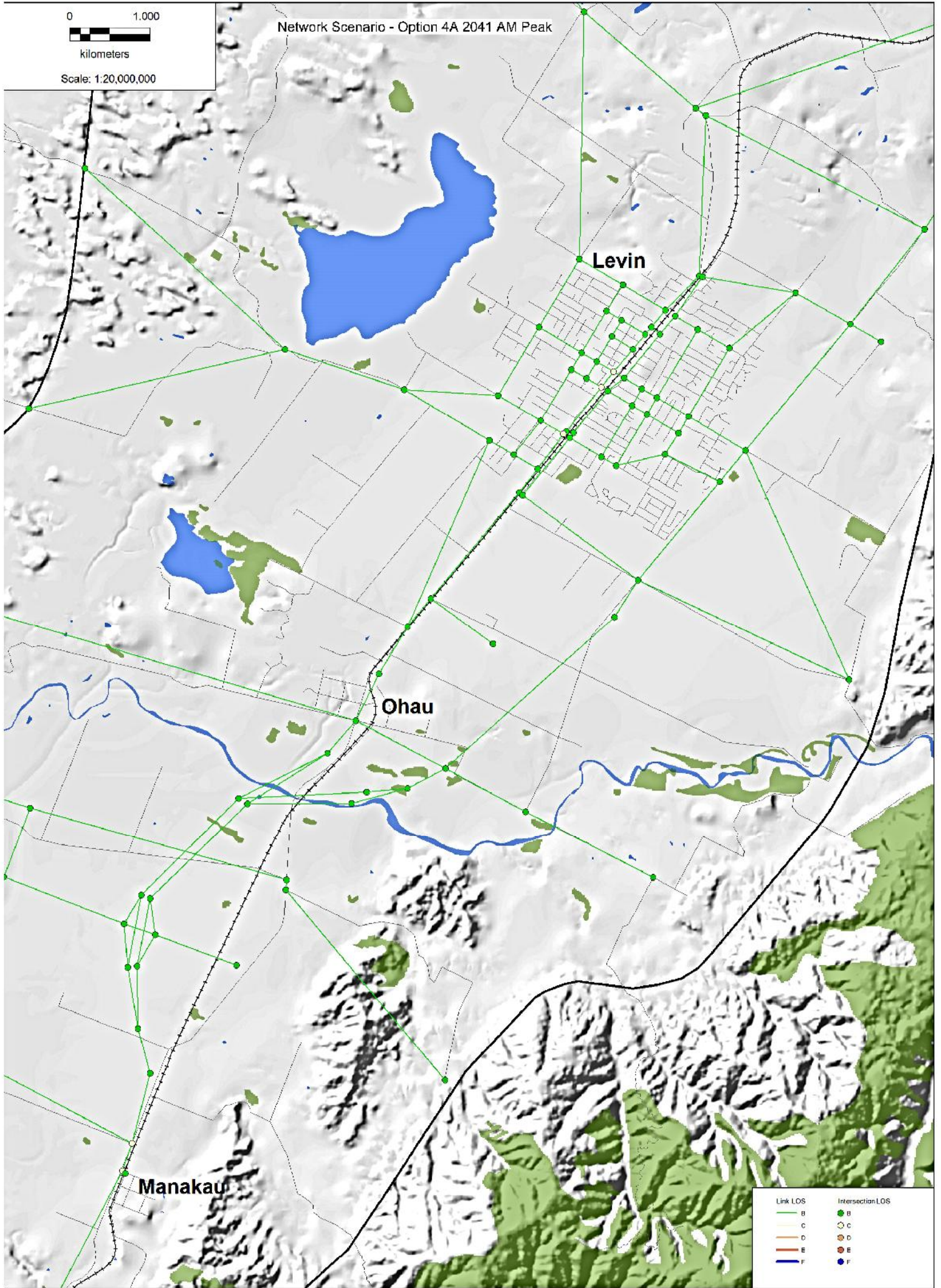
Network Scenario - Option 4A 2041 AM Peak

0 1.000

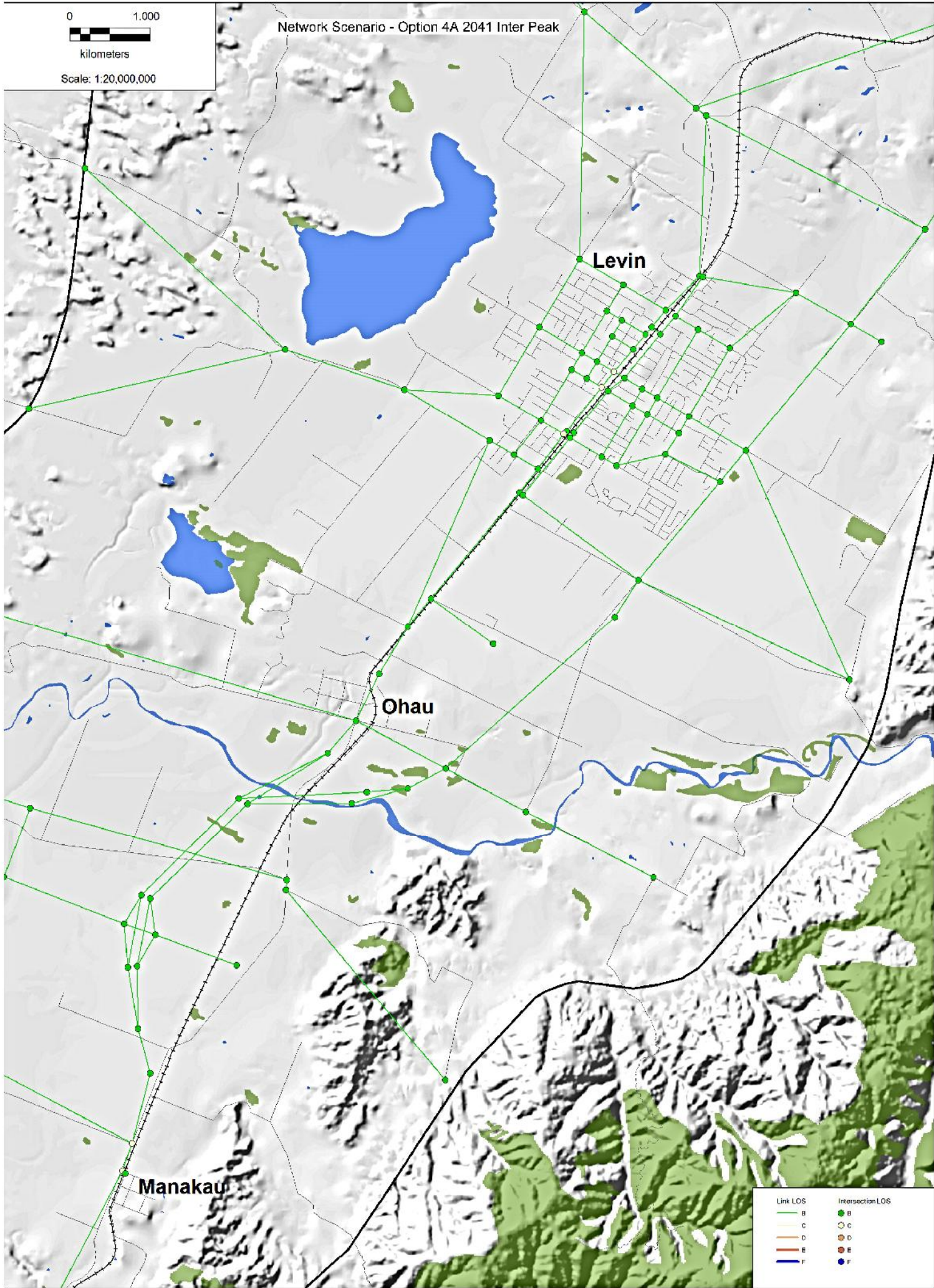
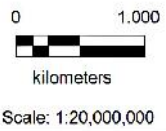


kilometers

Scale: 1:20,000,000

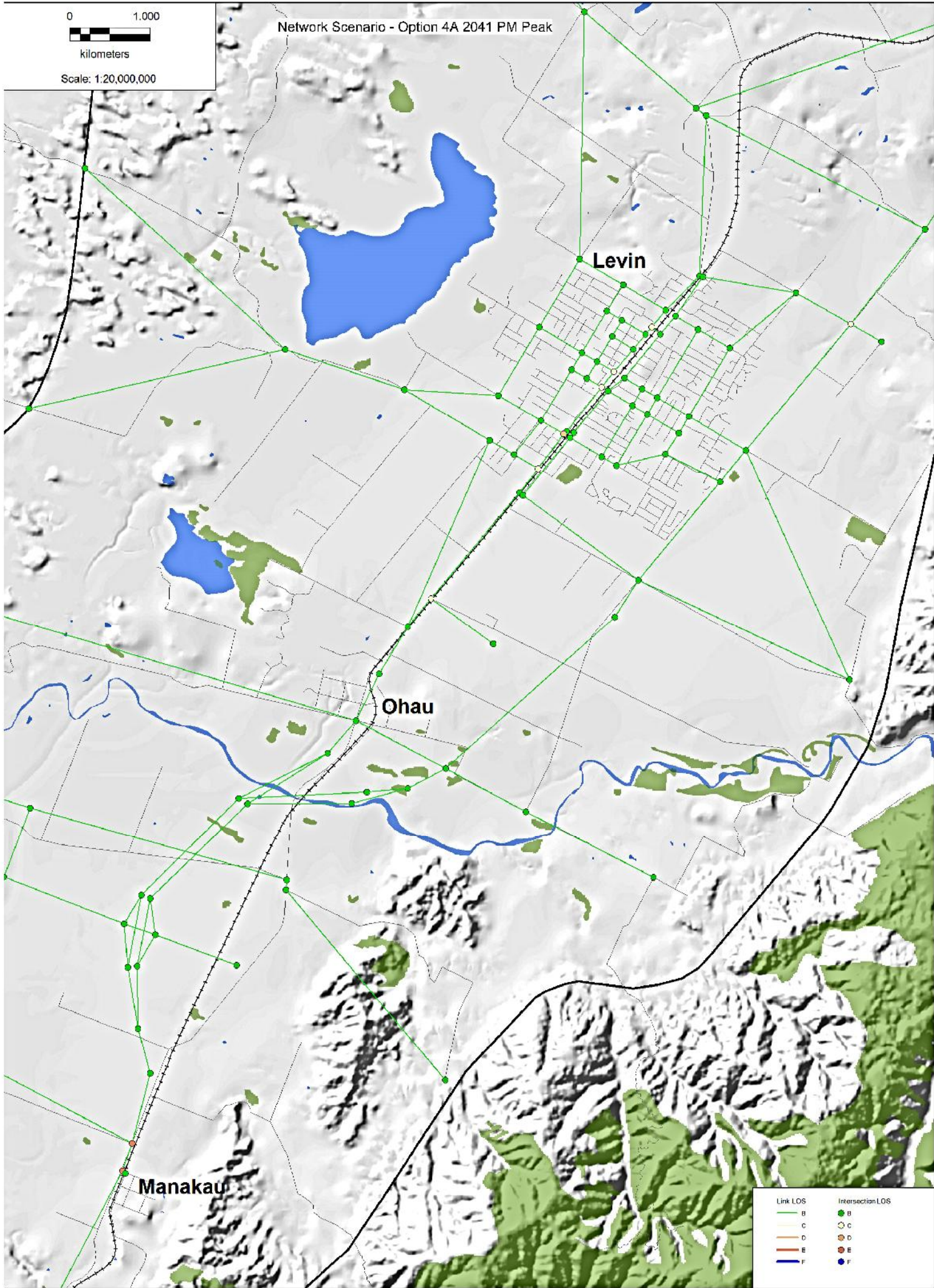
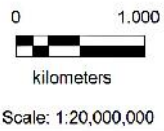


Network Scenario - Option 4A 2041 Inter Peak



Link LOS	Intersection LOS
B	B
C	C
D	D
E	E
F	F

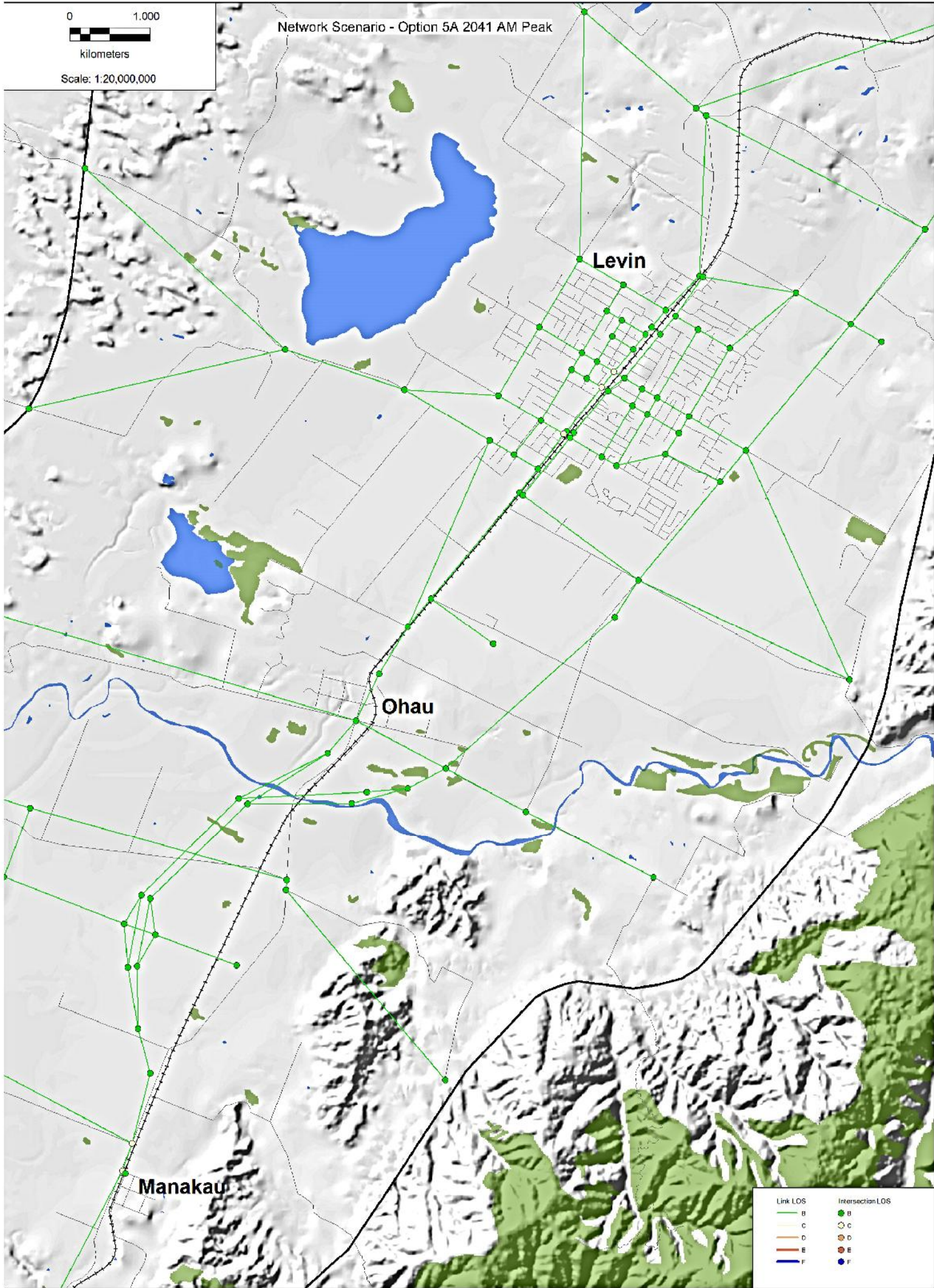
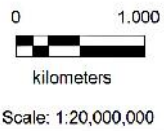
Network Scenario - Option 4A 2041 PM Peak



Link LOS	Intersection LOS
B	B
C	C
D	D
E	E
F	F

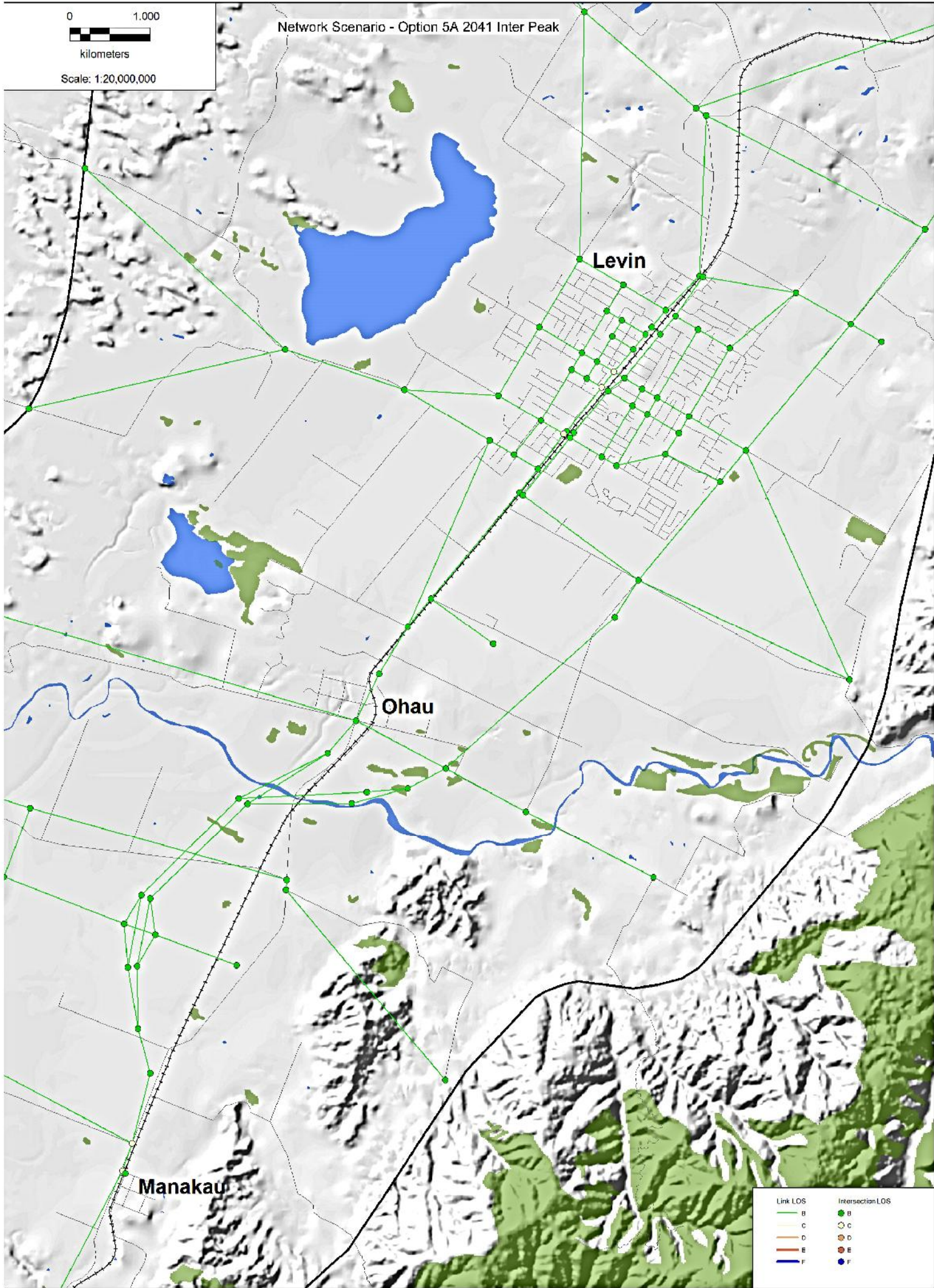
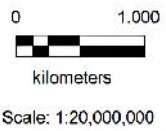


Network Scenario - Option 5A 2041 AM Peak



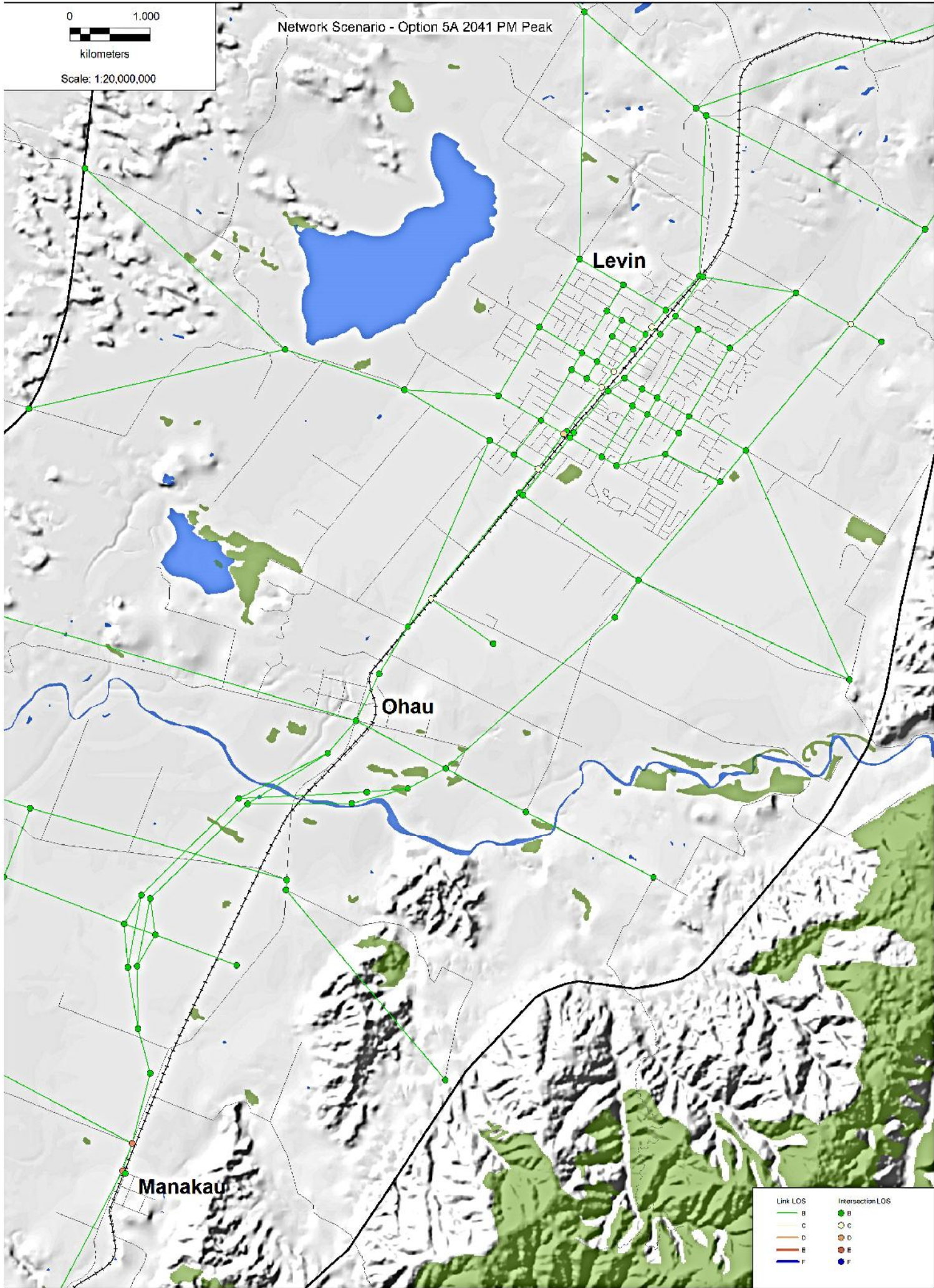
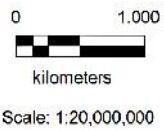
Link LOS	Intersection LOS
B	B
C	C
D	D
E	E
F	F

Network Scenario - Option 5A 2041 Inter Peak



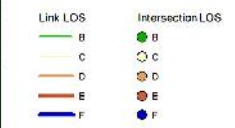
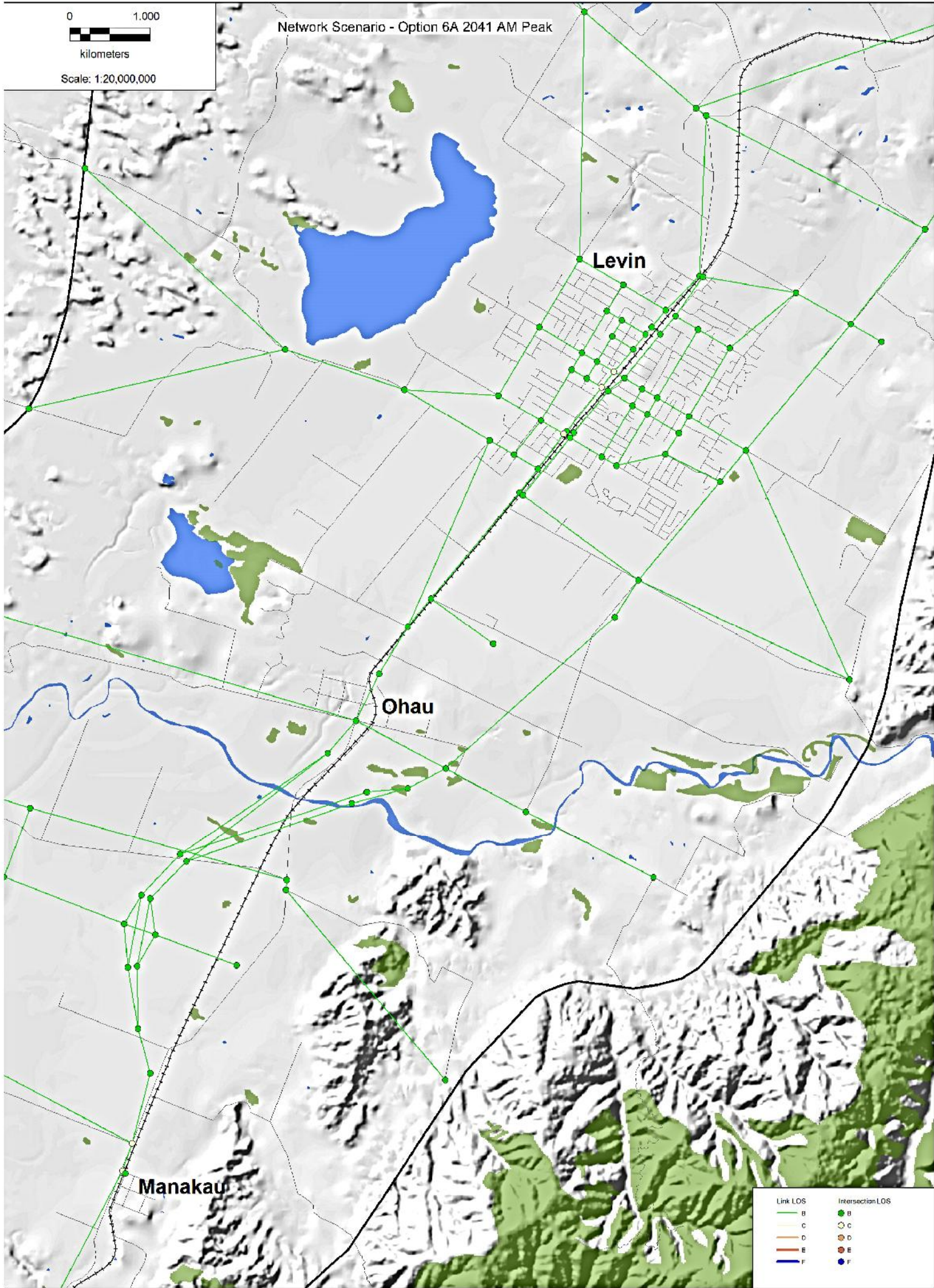
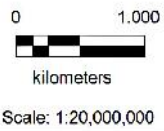
Link LOS	Intersection LOS
B	B
C	C
D	D
E	E
F	F

Network Scenario - Option 5A 2041 PM Peak

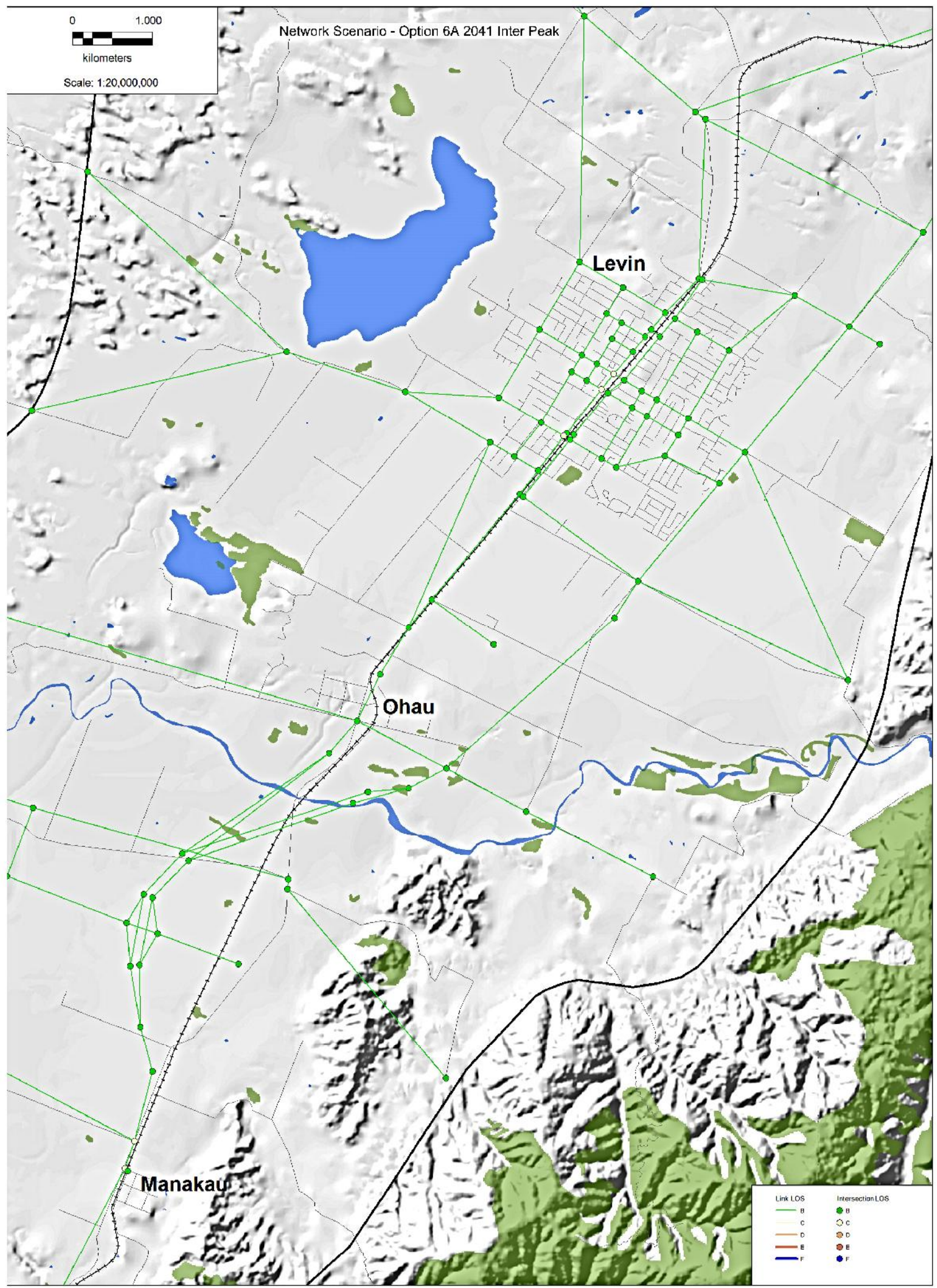
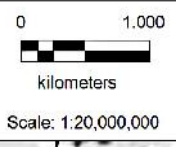


Link LOS	Intersection LOS
B	B
C	C
D	D
E	E
F	F

Network Scenario - Option 6A 2041 AM Peak

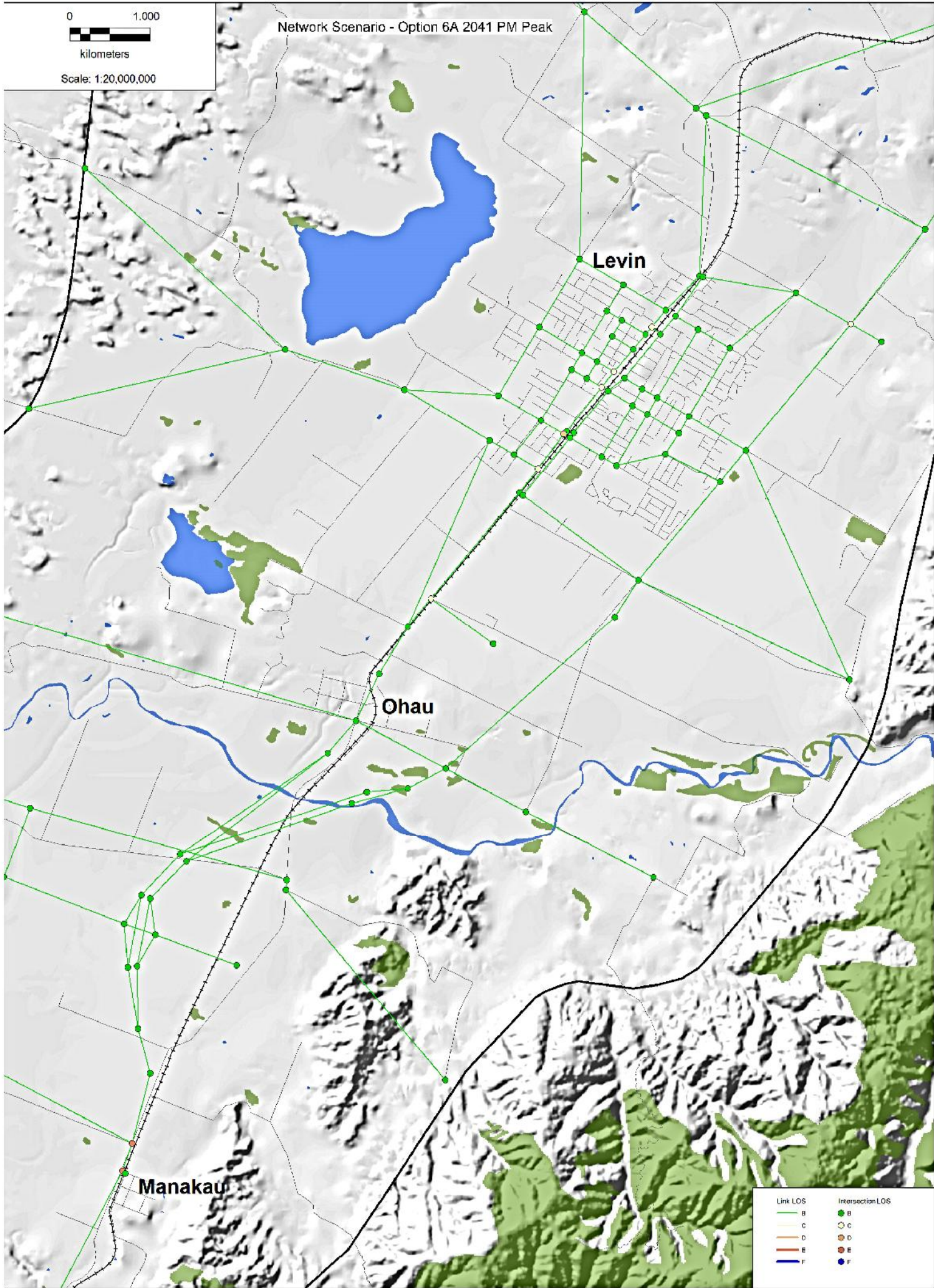
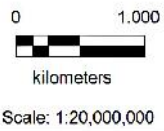


Network Scenario - Option 6A 2041 Inter Peak



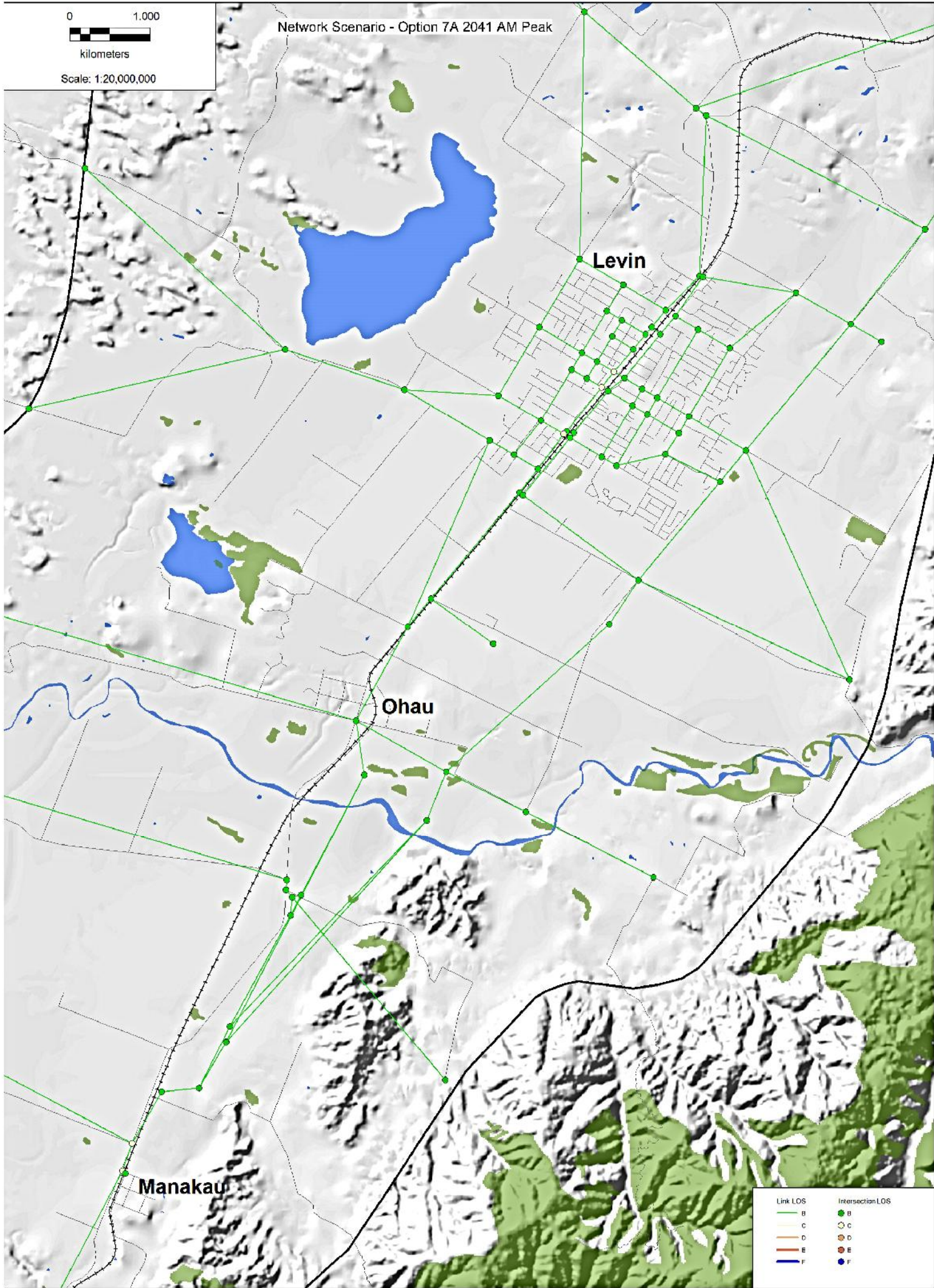
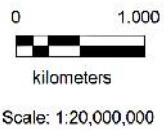
Link LOS	Intersection LOS
B	B
C	C
D	D
E	E
F	F

Network Scenario - Option 6A 2041 PM Peak



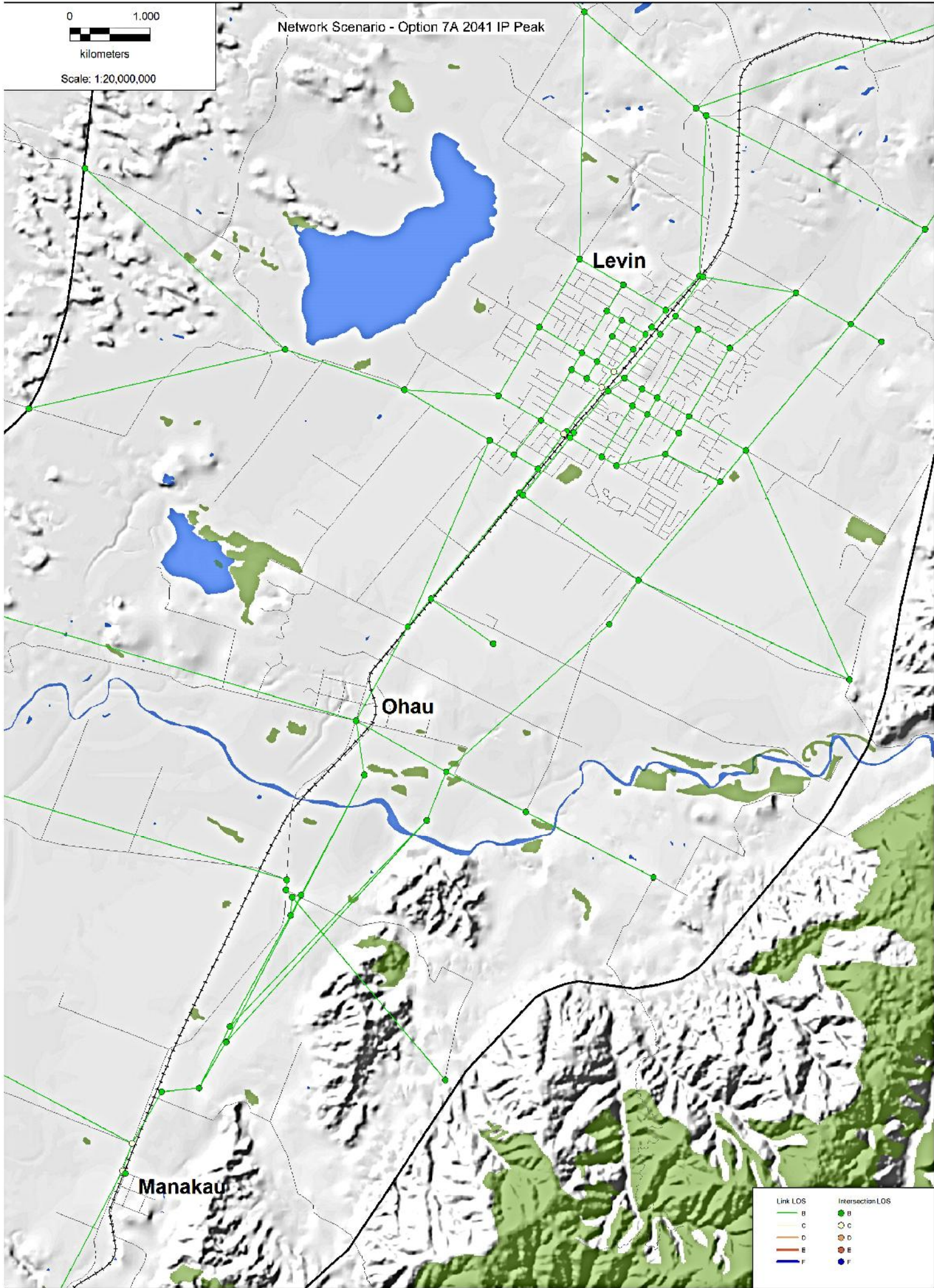
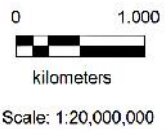
Link LOS	Intersection LOS
B	B
C	C
D	D
E	E
F	F

Network Scenario - Option 7A 2041 AM Peak



Link LOS	Intersection LOS
B	B
C	C
D	D
E	E
F	F

Network Scenario - Option 7A 2041 IP Peak



Link LOS	Intersection LOS
B	B
C	C
D	D
E	E
F	F



Network Scenario - Option 7A 2041 PM Peak

