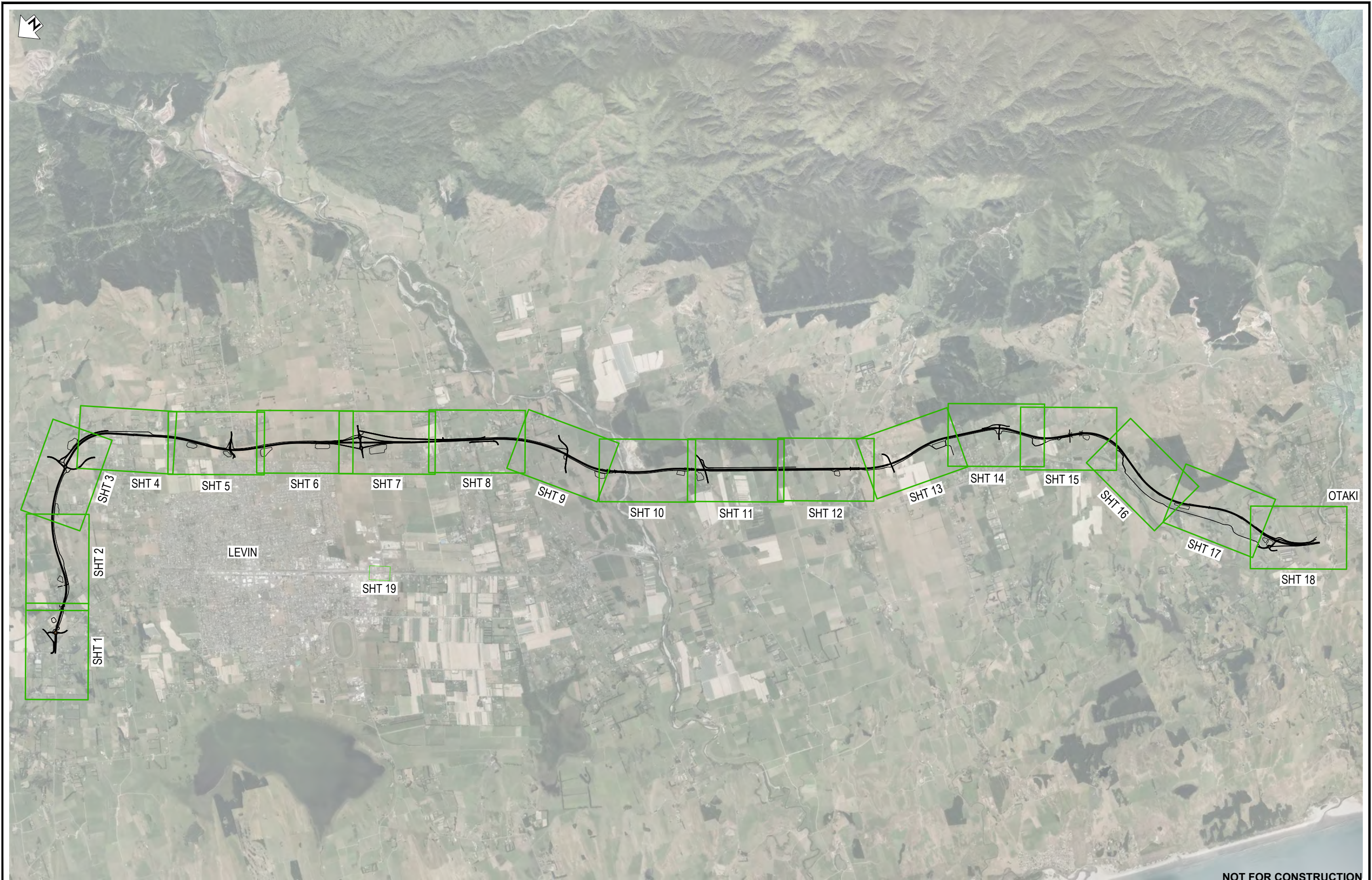


**NOTES**

1. DESIGN SHOWN IS A CONCEPT FOR PURPOSES OF ASSESSING ACTUAL AND POTENTIAL EFFECTS ON THE ENVIRONMENT. ALL INFORMATION SHOWN IS SUBJECT TO FURTHER DESIGN AND THE DETAILS MAY CHANGE WITHIN THE PARAMETERS OF ANY RMA APPROVALS. AREAS AND MEASUREMENTS SUBJECT TO SURVEY.
2. SHARED USE PATH (SUP) DETAILING, CONNECTION POINTS AND CROSSING DETAILS ARE TO BE ADDED AS DESIGNS PROGRESS.
3. INDICATIVE SEAL WIDENING IS SHOWN ON SOME HORIZONTAL CURVES WITH ALLOCATION TO MEDIAN OR SHOULDERS TO BE CONFIRMED IN LATER STAGES.
4. PLAN SET DOES NOT SHOW ALL HEADLIGHT SCREEN REQUIREMENTS BETWEEN ADJACENT ROAD SECTIONS.
5. ROAD MARKINGS ARE INDICATIVE ONLY.
6. BRIDGES ARE SHOWN INDICATIVELY ONLY. REFER TO BRIDGE DRAWING SERIES FOR FURTHER DETAILS.
7. BRIDGE ABUTMENT LOCATIONS, SKEWS AND WINGWALLS ARE INDICATIVE ONLY (INDIVIDUAL BRIDGE PLAN SET TAKES PRECEDENCE).
8. SPOIL SITE EXTENTS ARE SHOWN INDICATIVELY AND WILL BE DESIGNED TO BLEND INTO TOPOGRAPHY / PROJECT OUTCOMES AND INTEGRATED WITH LANDSCAPE AND NOISE MITIGATION DESIGN.
9. PROPERTY ACCESS SYMBOLS SHOWN ONLY WHERE PROJECT AFFECTS EXISTING ACCESS PROVISIONS.

**NOT FOR CONSTRUCTION**

										 		WAKA KOTAHI OTAKI TO NORTH OF LEVIN PROJECT		Status Stamp <b>FOR CONSENT</b>		
												Date Stamp <b>19.08.22</b>				
												Scale: NTS				
												Drawing No. <b>310203848-01-100-C0001</b>		Rev. <b>C</b>		
C ISSUED FOR RMA CONSENT B ISSUED FOR CONSENT - DRAFT A ISSUED FOR CONSENT - DRAFT		SS	KW	JP	19.08.22	DESIGN REVIEW	Keith Weale	08.04.22								
		SS	KW	JP	08.04.22	APPROVED	Jamie Povall	19.08.22								
REVISIONS		DRN	CHK	APP	DATE	PROF REGISTRATION:										



NOT FOR CONSTRUCTION

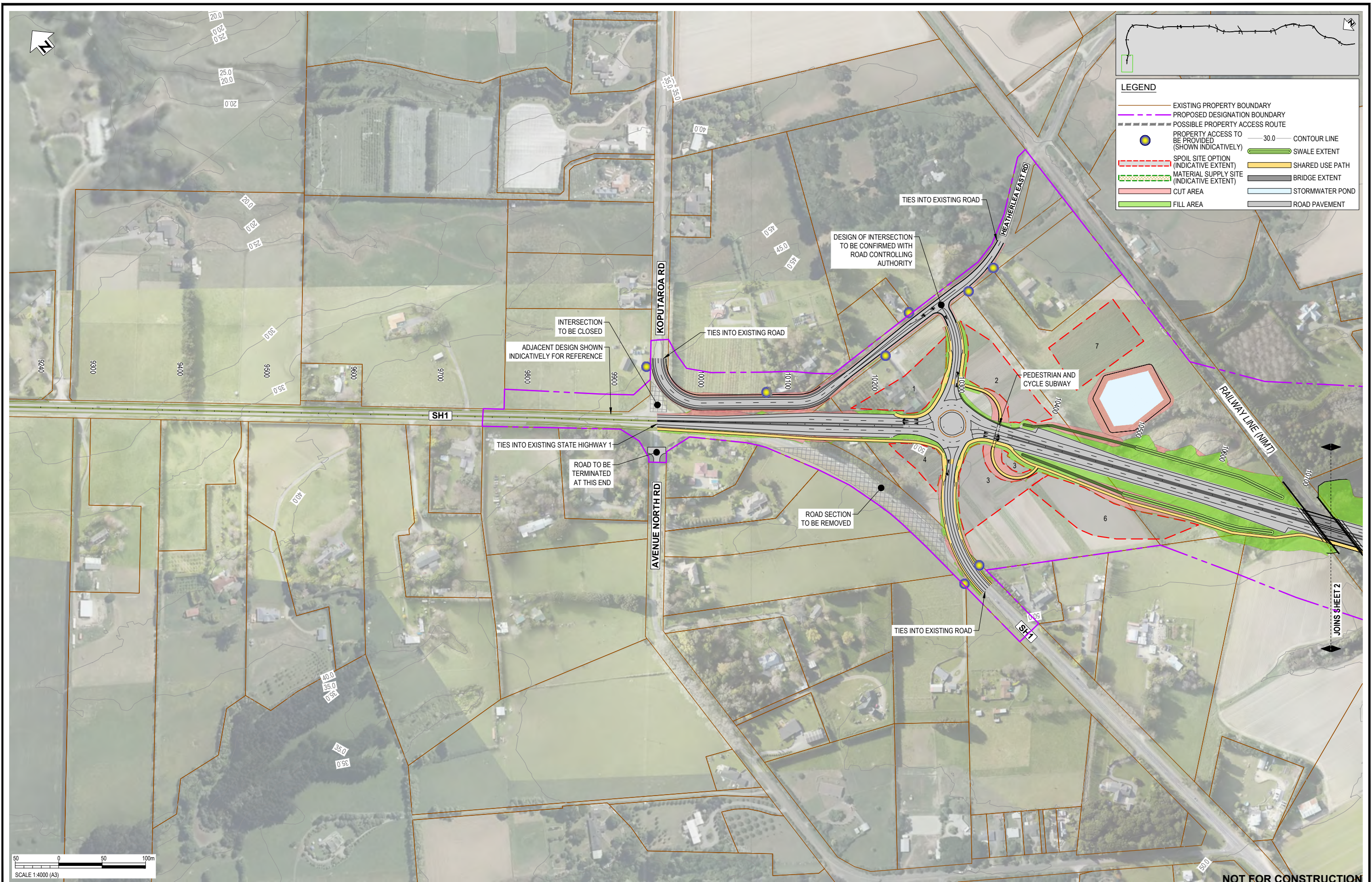
REV	REVISIONS	DRN	CHK	APP	DATE
F	ISSUED FOR RMA CONSENT	MH	JP	JP	10.10.22
E	ISSUED FOR RMA CONSENT	SS	KW	JP	18.06.21
D	ISSUED FOR CONSENT - DRAFT	SS	KW	JP	28.04.22
C	ISSUED FOR CONSENT - DRAFT	SS	KW	JP	09.12.21
B	ISSUED FOR CONSENTING - DRAFT REVIEW	SS	KW	JP	30.08.21
A	ISSUED FOR DBC	SS	KW	JP	18.06.21

SURVEYED	DESIGNED	DRAWN	CAD REVIEW	DESIGN CHECK	DESIGN REVIEW	APPROVED	PROF REGISTRATION:
	Steve Muller	Steve Sutton	Gavin Smit	Jamie Povall	Keith Weale	Jamie Povall	



Client: WAKA KOTAHI  
 OTAKI TO NORTH OF LEVIN PROJECT  
 GENERAL ARRANGEMENT  
 SITE LAYOUT PLAN

Status Stamp	<b>FOR CONSENT</b>
Date Stamp	<b>10.10.22</b>
Scale	NTS
Drawing No.	310203848-01-100-C0100
Rev.	<b>F</b>



REV	REVISIONS	DRN	CHK	APP	DATE
I	MATERIAL SUPPLY SITE HATCH UPDATED - ISSUED FOR RMA CONSENT	BH	JP	JP	21.12.22
H	VARIOUS UPDATES - ISSUED FOR RMA CONSENT	MH	KW	JP	10.10.22
G	ISSUED FOR RMA CONSENT	SS	KW	JP	19.08.22
F	ISSUED FOR CONSENT - DRAFT	SS	KW	JP	08.04.22
E	ISSUED FOR INFORMATION	SS	KC	JP	04.03.22
D	ISSUED FOR CONSENT - DRAFT	SS	KW	JP	08.12.21
C	ISSUED FOR CONSENTING - RE-ISSUE DRAFT REVIEW	SS	KW	JP	09.09.21
B	ISSUED FOR CONSENTING - DRAFT REVIEW	SS	KW	JP	30.08.21
A	ISSUED FOR DBC	SS	KW	JP	18.06.21

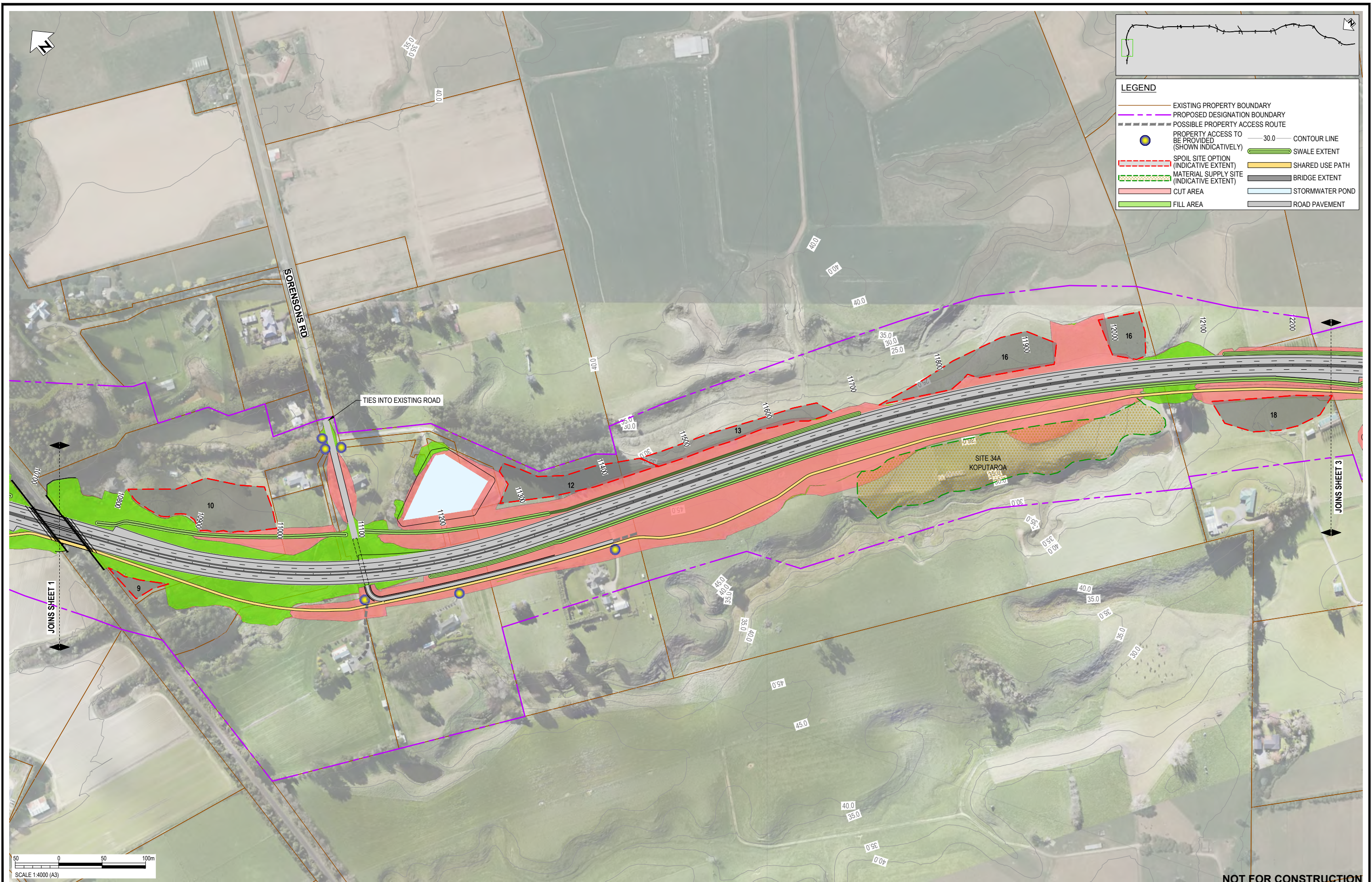
SURVEYED	DESIGNED	DRAWN	CAD REVIEW	DESIGN CHECK	DESIGN REVIEW	APPROVED
	Steve Muller	Steve Sutton	Steve Sutton	Jamie Povall	Keith Weale	Jamie Povall
	18.06.21	18.06.21	18.06.21	08.04.22	08.04.22	21.12.22

Client:



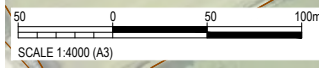

WAKA KOTAHI  
 OTAKI TO NORTH OF LEVIN PROJECT  
 GENERAL ARRANGEMENT PLAN - INDICATIVE  
 SHEET 1

Status Stamp	<b>FOR CONSENT</b>
Date Stamp	<b>21.12.22</b>
Scale	1 : 4000 (A3)
Drawing No.	310203848-01-100-C1000
Rev.	1



**LEGEND**

	EXISTING PROPERTY BOUNDARY		PROPOSED DESIGNATION BOUNDARY
	POSSIBLE PROPERTY ACCESS ROUTE		PROPERTY ACCESS TO BE PROVIDED (SHOWN INDICATIVELY)
	SPOIL SITE OPTION (INDICATIVE EXTENT)		SWALE EXTENT
	MATERIAL SUPPLY SITE (INDICATIVE EXTENT)		SHARED USE PATH
	CUT AREA		BRIDGE EXTENT
	FILL AREA		STORMWATER POND
	ROAD PAVEMENT		30.0 CONTOUR LINE



**NOT FOR CONSTRUCTION**

REV	DESCRIPTION	DRN	CHK	APP	DATE
I	MATERIAL SUPPLY SITE HATCH UPDATED - ISSUED FOR RMA CONSENT	BH	JP	JP	21.12.22
H	VARIOUS UPDATES - ISSUED FOR RMA CONSENT	MH	KW	JP	10.10.22
G	ISSUED FOR RMA CONSENT	SS	KW	JP	19.08.22
F	ISSUED FOR CONSENT - DRAFT	SS	KW	JP	08.04.22
E	ISSUED FOR INFORMATION	SS	KC	JP	04.03.22
D	ISSUED FOR CONSENT - DRAFT	SS	KW	JP	08.12.21
C	ISSUED FOR CONSENTING - RE-ISSUE DRAFT REVIEW	SS	KW	JP	09.09.21
B	ISSUED FOR CONSENTING - DRAFT REVIEW	SS	KW	JP	30.08.21
A	ISSUED FOR DBC	SS	KW	JP	18.06.21

SURVEYED	DESIGNED	DRAWN	CAD REVIEW	DESIGN CHECK	DESIGN REVIEW	APPROVED
	Steve Muller	Steve Sutton	Steve Sutton	Jamie Povall	Keith Weale	Jamie Povall
	18.06.21	18.06.21	18.06.21	08.04.22	08.04.22	21.12.22

Client:

**WAKA KOTAHI**  
**OTAKI TO NORTH OF LEVIN PROJECT**

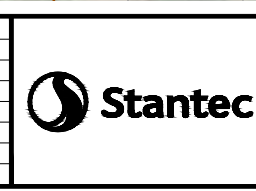
GENERAL ARRANGEMENT PLAN - INDICATIVE  
**SHEET 2**

Status Stamp	<b>FOR CONSENT</b>
Date Stamp	<b>21.12.22</b>
Scale	1 : 4000 (A3)
Drawing No.	310203848-01-100-C1001
Rev.	1



REV	DESCRIPTION	BY	CHK	APP	DATE
I	MATERIAL SUPPLY SITE HATCH UPDATED - ISSUED FOR RMA CONSENT	BH	JP	JP	21.12.22
H	VARIOUS UPDATES - ISSUED FOR RMA CONSENT	MH	KW	JP	10.10.22
G	ISSUED FOR RMA CONSENT	SS	KW	JP	19.08.22
F	ISSUED FOR CONSENT - DRAFT	SS	KW	JP	08.04.22
E	ISSUED FOR INFORMATION	SS	KC	JP	04.03.22
D	ISSUED FOR CONSENT - DRAFT	SS	KW	JP	08.12.21
C	ISSUED FOR CONSENTING - RE-ISSUE DRAFT REVIEW	SS	KW	JP	09.09.21
B	ISSUED FOR CONSENTING - DRAFT REVIEW	SS	KW	JP	30.08.21
A	ISSUED FOR DBC	SS	KW	JP	18.06.21
REV	REVISIONS	DRN	CHK	APP	DATE

SURVEYED	DESIGNED	DRAWN	CAD REVIEW	DESIGN CHECK	DESIGN REVIEW	APPROVED
	Steve Muller	Steve Sutton	Steve Sutton	Jamie Poval	Keith Weale	Jamie Poval
	18.06.21	18.06.21	18.06.21	08.04.22	08.04.22	21.12.22



Client: WAKA KOTAHI  
 OTAKI TO NORTH OF LEVIN PROJECT  
 GENERAL ARRANGEMENT PLAN - INDICATIVE  
 SHEET 3

Status Stamp	<b>FOR CONSENT</b>
Date Stamp	21.12.22
Scale	1 : 4000 (A3)
Drawing No.	310203848-01-100-C1002
Rev.	1



**LEGEND**

	EXISTING PROPERTY BOUNDARY		PROPOSED DESIGNATION BOUNDARY
	POSSIBLE PROPERTY ACCESS ROUTE		PROPERTY ACCESS TO BE PROVIDED (SHOWN INDICATIVELY)
	SPOIL SITE OPTION (INDICATIVE EXTENT)		SWALE EXTENT
	MATERIAL SUPPLY SITE (INDICATIVE EXTENT)		SHARED USE PATH
	CUT AREA		BRIDGE EXTENT
	FILL AREA		STORMWATER POND
			ROAD PAVEMENT
			30.0 CONTOUR LINE

SCALE 1:4000 (A3)

50	0	50	100m
----	---	----	------

REV	REVISIONS	DRN	CHK	APP	DATE
A	ISSUED FOR DBC	SS	KW	JP	18.06.21
B	ISSUED FOR CONSULTING - DRAFT REVIEW	SS	KW	JP	30.08.21
C	ISSUED FOR CONSULTING - RE-ISSUE DRAFT REVIEW	SS	KW	JP	09.09.21
D	ISSUED FOR CONSULTING - DRAFT	SS	KW	JP	08.12.21
E	ISSUED FOR INFORMATION	SS	KC	JP	04.03.22
F	ISSUED FOR CONSULTING - DRAFT	SS	KW	JP	08.04.22
G	ISSUED FOR RMA CONSENT	SS	KW	JP	19.08.22
H	VARIOUS UPDATES - ISSUED FOR RMA CONSENT	MH	KW	JP	10.10.22
I	MATERIAL SUPPLY SITE HATCH UPDATED - ISSUED FOR RMA CONSENT	BH	JP	JP	21.12.22
J	DESIGNATION UPDATED - ISSUED FOR RMA CONSENT	MN	GL	JE	29.11.23

PROF REGISTRATION:	DATE	APP	CHK	DRN
29.11.23	Jon England	JP	KW	SS
18.06.21	Steve Muller	JP	KW	MH
18.06.21	Steve Sutton	JP	KW	SS
18.06.21	Steve Sutton	JP	KW	SS
08.04.22	Jamie Poval	JP	KW	SS
08.04.22	Keith Weale	JP	KW	SS
29.11.23	Jon England	JP	KW	SS

Client:

WAKA KOTAHI  
OTAKI TO NORTH OF LEVIN PROJECT

GENERAL ARRANGEMENT PLAN - INDICATIVE  
SHEET 4

Status Stamp	<b>FOR CONSENT</b>
Date Stamp	<b>29.11.23</b>
Scale	1 : 4000 (A3)
Drawing No.	310203848-01-100-C1003
Rev.	<b>J</b>

pw:\stntec-ap-pw.bentley.com\stntec-ap-pw-01\Documents\New Zealand Clients\NZTA (Waka Kotahi NZ Transport Agency)\310203848 - Otaki to North of Levin DBC\01 - 02NL1100 - Geometric Design\310203848-01-100-C1003



**LEGEND**

	EXISTING PROPERTY BOUNDARY		PROPOSED DESIGNATION BOUNDARY		30.0 CONTOUR LINE
	POSSIBLE PROPERTY ACCESS ROUTE		PROPERTY ACCESS TO BE PROVIDED (SHOWN INDICATIVELY)		SWALE EXTENT
	SPOIL SITE OPTION (INDICATIVE EXTENT)		SHARED USE PATH		BRIDGE EXTENT
	MATERIAL SUPPLY SITE (INDICATIVE EXTENT)		STORMWATER POND		ROAD PAVEMENT
	CUT AREA				
	FILL AREA				

REV	REVISIONS	MN	GL	JE	DATE
J	DESIGNATION UPDATED - ISSUED FOR RMA CONSENT	MN	GL	JE	29.11.23
I	MATERIAL SUPPLY SITE HATCH UPDATED - ISSUED FOR RMA CONSENT	BH	JP	JP	21.12.22
H	VARIOUS UPDATES - ISSUED FOR RMA CONSENT	MH	KW	JP	10.10.22
G	ISSUED FOR RMA CONSENT	SS	KW	JP	19.08.22
F	ISSUED FOR CONSENT - DRAFT	SS	KW	JP	08.04.22
E	ISSUED FOR INFORMATION	SS	KC	JP	04.03.22
D	ISSUED FOR CONSENT - DRAFT	SS	KW	JP	03.12.21
C	ISSUED FOR CONSENTING - RE-ISSUE DRAFT REVIEW	SS	KW	JP	09.09.21
B	ISSUED FOR CONSENTING - DRAFT REVIEW	SS	KW	JP	30.08.21
A	ISSUED FOR DBC	SS	KW	JP	18.06.21
DRN	CHK	APP	DATE		

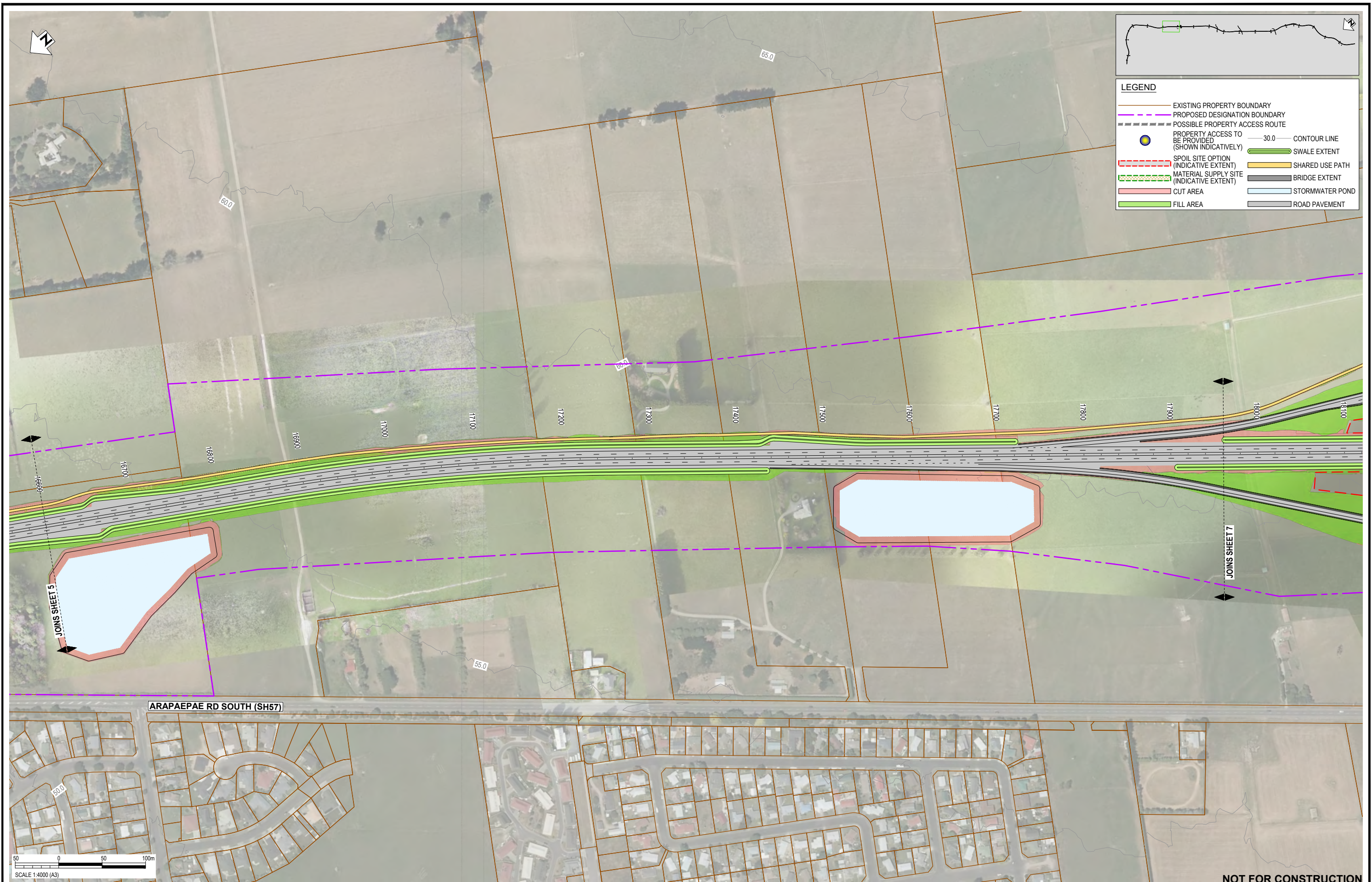
SURVEYED	DESIGNED	DRAWN	CAD REVIEW	DESIGN CHECK	DESIGN REVIEW	APPROVED	DATE
	Steve Muller	Steve Sutton	Steve Sutton	Jamie Povall	Keith Weale	Jon England	29.11.23

Client:

WAKA KOTAHI  
 OTAKI TO NORTH OF LEVIN PROJECT  
 GENERAL ARRANGEMENT PLAN - INDICATIVE  
 SHEET 5

Status Stamp	<b>FOR CONSENT</b>
Date Stamp	29.11.23
Scale	1 : 4000 (A3)
Drawing No.	310203848-01-100-C1004
Rev.	J

pw:\stantec-ap-pw.bentley.com:\stantec-ap-pw-01\Documents\New Zealand Clients\NZTA (Waka Kotahi NZ Transport Agency)\310203848 - Otaki to North of Levin DBC\01 - O2NL100 - Geometric Design\310203848-01-100-C1004



**LEGEND**

	EXISTING PROPERTY BOUNDARY		PROPOSED DESIGNATION BOUNDARY		30.0 CONTOUR LINE
	POSSIBLE PROPERTY ACCESS ROUTE		PROPERTY ACCESS TO BE PROVIDED (SHOWN INDICATIVELY)		SWALE EXTENT
	SPOIL SITE OPTION (INDICATIVE EXTENT)		SHARED USE PATH		BRIDGE EXTENT
	MATERIAL SUPPLY SITE (INDICATIVE EXTENT)		STORMWATER POND		ROAD PAVEMENT
	CUT AREA				
	FILL AREA				



ARAPAEPAE RD SOUTH (SH57)

NOT FOR CONSTRUCTION

REV	REVISIONS	DRN	CHK	APP	DATE
J	MATERIAL SUPPLY SITE HATCH UPDATED - ISSUED FOR RMA CONSENT	BH	JP	JP	21.12.22
I	EAST-WEST ARTERIAL DESIGN REMOVED	MH	JP	JP	19.10.22
H	VARIOUS UPDATES - ISSUED FOR RMA CONSENT	MH	KW	JP	10.10.22
G	ISSUED FOR RMA CONSENT	SS	KW	JP	19.08.22
F	ISSUED FOR CONSENT - DRAFT	SS	KW	JP	08.04.22
E	ISSUED FOR INFORMATION	SS	KC	JP	04.03.22
D	ISSUED FOR CONSENT - DRAFT	SS	KW	JP	08.12.21
C	ISSUED FOR CONSENTING - RE-ISSUE DRAFT REVIEW	SS	KW	JP	09.09.21
B	ISSUED FOR CONSENTING - DRAFT REVIEW	SS	KW	JP	30.08.21
A	ISSUED FOR DBC	SS	KW	JP	18.06.21

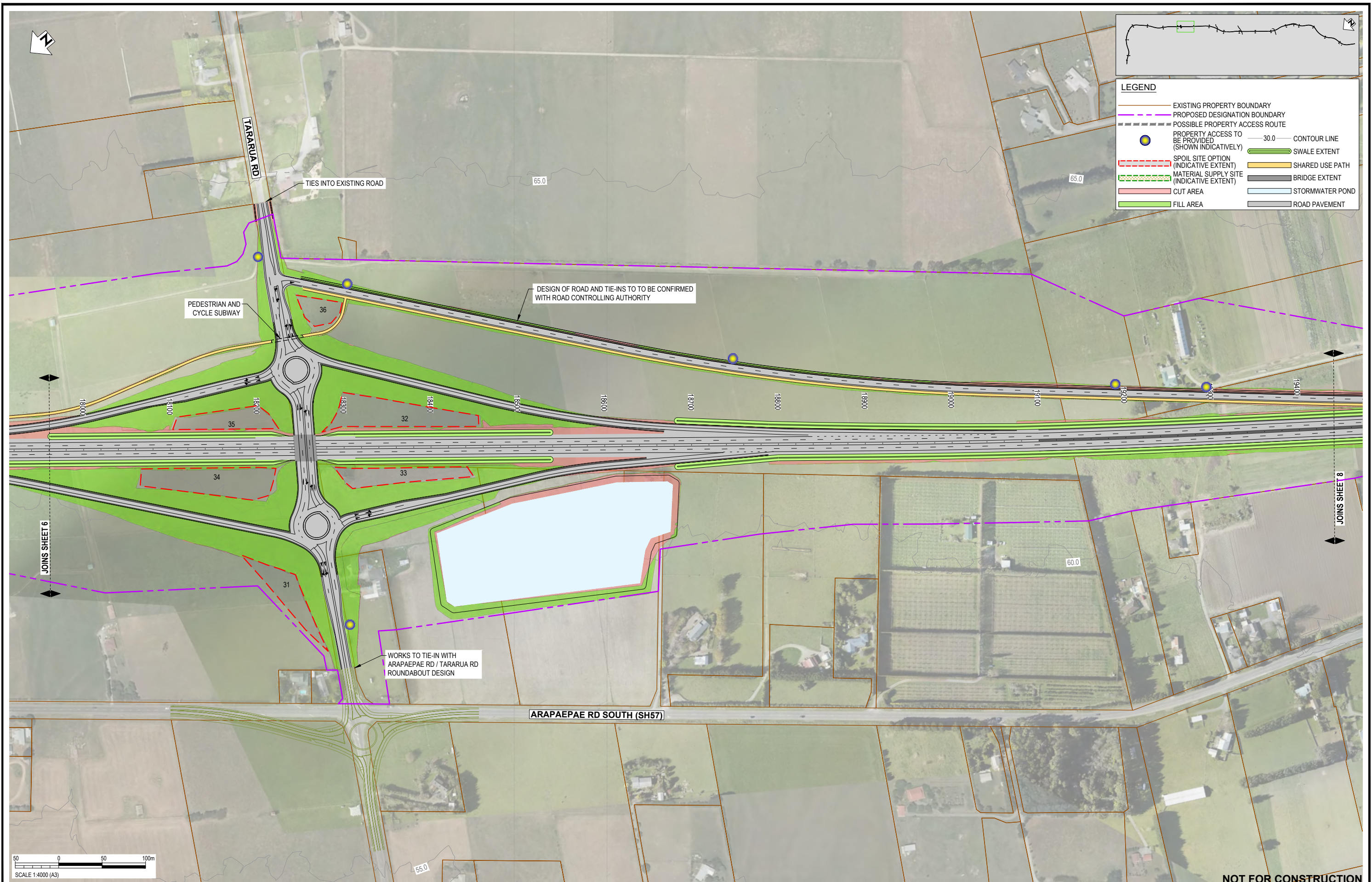
SURVEYED	DESIGNED	DRAWN	CAD REVIEW	DESIGN CHECK	DESIGN REVIEW	APPROVED
	Steve Muller	Steve Sutton	Steve Sutton	Jamie Povall	Keith Weale	Jamie Povall
	18.06.21	18.06.21	18.06.21	08.04.22	08.04.22	21.12.22

Client:

WAKA KOTAHI  
 OTAKI TO NORTH OF LEVIN PROJECT  
 GENERAL ARRANGEMENT PLAN - INDICATIVE  
 SHEET 6

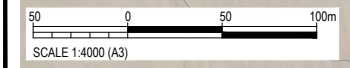
Status Stamp	<b>FOR CONSENT</b>
Date Stamp	<b>21.12.22</b>
Scale	1 : 4000 (A3)
Drawing No.	310203848-01-100-C1005
Rev.	<b>J</b>





**LEGEND**

	EXISTING PROPERTY BOUNDARY		PROPOSED DESIGNATION BOUNDARY
	POSSIBLE PROPERTY ACCESS ROUTE		PROPERTY ACCESS TO BE PROVIDED (SHOWN INDICATIVELY)
	SPOIL SITE OPTION (INDICATIVE EXTENT)		30.0 CONTOUR LINE
	MATERIAL SUPPLY SITE (INDICATIVE EXTENT)		SWALE EXTENT
	CUT AREA		SHARED USE PATH
	FILL AREA		BRIDGE EXTENT
			STORMWATER POND
			ROAD PAVEMENT



**NOT FOR CONSTRUCTION**

REV	REVISIONS	DRN	CHK	APP	DATE
I	MATERIAL SUPPLY SITE HATCH UPDATED - ISSUED FOR RMA CONSENT	BH	JP	JP	21.12.22
H	VARIOUS UPDATES - ISSUED FOR RMA CONSENT	MH	KW	JP	10.10.22
G	ISSUED FOR RMA CONSENT	SS	KW	JP	19.08.22
F	ISSUED FOR CONSENT - DRAFT	SS	KW	JP	08.04.22
E	ISSUED FOR INFORMATION	SS	KC	JP	04.03.22
D	ISSUED FOR CONSENT - DRAFT	SS	KW	JP	09.12.21
C	ISSUED FOR CONSENTING - RE-ISSUE DRAFT REVIEW	SS	KW	JP	09.09.21
B	ISSUED FOR CONSENTING - DRAFT REVIEW	SS	KW	JP	30.08.21
A	ISSUED FOR DBC	SS	KW	JP	18.06.21

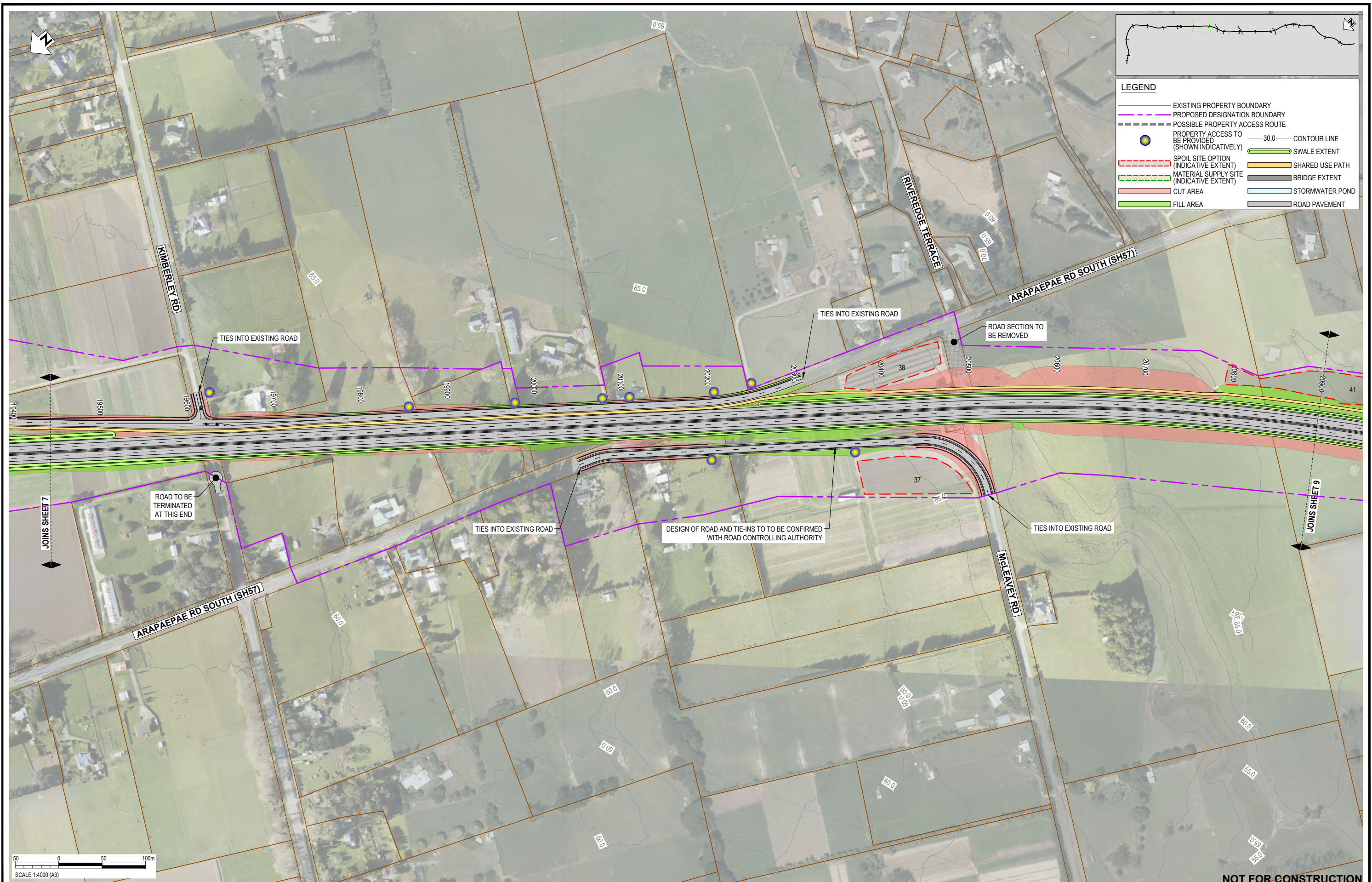
SURVEYED	DESIGNED	DRAWN	CAD REVIEW	DESIGN CHECK	DESIGN REVIEW	APPROVED	DATE
	Steve Muller	Steve Sutton	Steve Sutton	Jamie Povall	Keith Weale	Jamie Povall	18.06.21
							18.06.21
							08.04.22
							08.04.22
							08.04.22
							21.12.22

Client:

**WAKA KOTAHI**  
**OTAKI TO NORTH OF LEVIN PROJECT**  
 GENERAL ARRANGEMENT PLAN - INDICATIVE  
 SHEET 7

Status Stamp	<b>FOR CONSENT</b>
Date Stamp	<b>21.12.22</b>
Scale	1 : 4000 (A3)
Drawing No.	310203848-01-100-C1006
Rev.	1

pw:\stiantec-ap-pw.bentley.com:\stiantec-ap-pw-01\Documents\New Zealand Clients\NZTA (New Zealand Transport Agency)\310203848 - Otaki to North of Levin DBC\01 - 02NL1100 - Geometric Design\310203848-01-100-C1006



**LEGEND**

	EXISTING PROPERTY BOUNDARY		PROPOSED DESIGNATION BOUNDARY		30.0 CONTOUR LINE
	POSSIBLE PROPERTY ACCESS ROUTE		PROPERTY ACCESS TO BE PROVIDED (SHOWN INDICATIVELY)		SWALE EXTENT
	SPOIL SITE OPTION (INDICATIVE EXTENT)		SHARED USE PATH		BRIDGE EXTENT
	MATERIAL SUPPLY SITE (INDICATIVE EXTENT)		STORMWATER POND		ROAD PAVEMENT
	CUT AREA				
	FILL AREA				



**NOT FOR CONSTRUCTION**

REV	DESCRIPTION	BY	CHK	APP	DATE
I	MATERIAL SUPPLY SITE HATCH UPDATED - ISSUED FOR RMA CONSENT	BH	JP	JP	21.12.22
H	VARIOUS UPDATES - ISSUED FOR RMA CONSENT	MH	KW	JP	10.10.22
G	ISSUED FOR RMA CONSENT	SS	KW	JP	19.08.22
F	ISSUED FOR CONSENT - DRAFT	SS	KW	JP	08.04.22
E	ISSUED FOR INFORMATION	SS	KC	JP	04.03.22
D	ISSUED FOR CONSENT - DRAFT	SS	KW	JP	09.12.21
C	ISSUED FOR CONSENTING - RE-ISSUE DRAFT REVIEW	SS	KW	JP	09.09.21
B	ISSUED FOR CONSENTING - DRAFT REVIEW	SS	KW	JP	30.08.21
A	ISSUED FOR DBC	SS	KW	JP	18.06.21

DATE	PROF REGISTRATION	DATE	DESIGNED	DATE	DESIGNED
21.12.22		18.06.21	Steve Muller	18.06.21	Steve Muller
10.10.22		18.06.21	Steve Sutton	18.06.21	Steve Sutton
19.08.22		08.04.22	Steve Sutton	18.06.21	Steve Sutton
08.04.22		08.04.22	Jamie Povall	08.04.22	Jamie Povall
04.03.22		08.04.22	Keith Weale	08.04.22	Keith Weale
09.12.21		21.12.22	Jamie Povall	21.12.22	Jamie Povall
09.09.21					
30.08.21					
18.06.21					

Client:

WAKA KOTAHI  
 OTAKI TO NORTH OF LEVIN PROJECT  
 GENERAL ARRANGEMENT PLAN - INDICATIVE  
 SHEET 8

Status Stamp	<b>FOR CONSENT</b>
Date Stamp	<b>21.12.22</b>
Scale	1 : 4000 (A3)
Drawing No.	310203848-01-100-C1007
Rev.	1

pw:\stantec-ap-pw.bentley.com:\stantec-ap-pw-01\Documents\New Zealand Clients\NZTA (New Zealand Transport Agency)\310203848 - Otaki to North of Levin DBC\01 - 02\NL1100 - Geometric Design\310203848-01-100-C1007



NOT FOR CONSTRUCTION

I	MATERIAL SUPPLY SITE HATCH UPDATED - ISSUED FOR RMA CONSENT	BH	JP	JP	21.12.22
H	VARIOUS UPDATES - ISSUED FOR RMA CONSENT	MH	KW	JP	10.10.22
G	ISSUED FOR RMA CONSENT	SS	KW	JP	19.08.22
F	ISSUED FOR CONSENT - DRAFT	SS	KW	JP	08.04.22
E	ISSUED FOR INFORMATION	SS	KC	JP	04.03.22
D	ISSUED FOR CONSENT - DRAFT	SS	KW	JP	08.12.21
C	ISSUED FOR CONSENTING - RE-ISSUE DRAFT REVIEW	SS	KW	JP	09.09.21
B	ISSUED FOR CONSENTING - DRAFT REVIEW	SS	KW	JP	30.08.21
A	ISSUED FOR DBC	SS	KW	JP	18.06.21
REV	REVISIONS	DRN	CHK	APP	DATE

SURVEYED			
DESIGNED	Steve Muller		18.06.21
DRAWN	Steve Sutton		18.06.21
CAD REVIEW	Steve Sutton		18.06.21
DESIGN CHECK	Jamie Povall		08.04.22
DESIGN REVIEW	Keith Weale		08.04.22
APPROVED	Jamie Povall		21.12.22
PROF REGISTRATION:			

Client:




WAKA KOTAHI  
 OTAKI TO NORTH OF LEVIN PROJECT  
 GENERAL ARRANGEMENT PLAN - INDICATIVE  
 SHEET 9

Status Stamp	<b>FOR CONSENT</b>
Date Stamp	<b>21.12.22</b>
Scale	1 : 4000 (A3)
Drawing No.	310203848-01-100-C1008
Rev.	I



**LEGEND**

	EXISTING PROPERTY BOUNDARY		PROPOSED DESIGNATION BOUNDARY		30.0 CONTOUR LINE
	POSSIBLE PROPERTY ACCESS ROUTE		PROPERTY ACCESS TO BE PROVIDED (SHOWN INDICATIVELY)		SWALE EXTENT
	SPOIL SITE OPTION (INDICATIVE EXTENT)		SHARED USE PATH		BRIDGE EXTENT
	MATERIAL SUPPLY SITE (INDICATIVE EXTENT)		STORMWATER POND		ROAD PAVEMENT
	CUT AREA				
	FILL AREA				



NOT FOR CONSTRUCTION

REV	DESCRIPTION	DATE	BY	CHK	APP
I	MATERIAL SUPPLY SITE HATCH UPDATED - ISSUED FOR RMA CONSENT	21.12.22	BH	JP	JP
H	VARIOUS UPDATES - ISSUED FOR RMA CONSENT	10.10.22	MH	KW	JP
G	ISSUED FOR RMA CONSENT	19.08.22	SS	KW	JP
F	ISSUED FOR CONSENT - DRAFT	08.04.22	SS	KW	JP
E	ISSUED FOR INFORMATION	04.03.22	SS	KC	JP
D	ISSUED FOR CONSENT - DRAFT	08.12.21	SS	KW	JP
C	ISSUED FOR CONSENTING - RE-ISSUE DRAFT REVIEW	09.09.21	SS	KW	JP
B	ISSUED FOR CONSENTING - DRAFT REVIEW	30.08.21	SS	KW	JP
A	ISSUED FOR DBC	18.06.21	SS	KW	JP

DATE	BY	CHK	APP	DESCRIPTION
21.12.22	JP	JP		SURVEYED
18.06.21	JP		Steve Muller	DESIGNED
18.06.21	JP		Steve Sutton	DRAWN
18.06.21	JP		Steve Sutton	CAD REVIEW
08.04.22	JP		Jamie Povall	DESIGN CHECK
08.04.22	JP		Keith Weale	DESIGN REVIEW
21.12.22	JP		Jamie Povall	APPROVED

Client:

WAKA KOTAHI  
 OTAKI TO NORTH OF LEVIN PROJECT  
 GENERAL ARRANGEMENT PLAN - INDICATIVE  
 SHEET 10

Status Stamp	<b>FOR CONSENT</b>
Date Stamp	21.12.22
Scale	1 : 4000 (A3)
Drawing No.	310203848-01-100-C1009
Rev.	I

pw:\stantec-ap-pw-bentley.com:\stantec-ap-pw-01\Documents\New Zealand Clients\NZTA (New Zealand Transport Agency)\310203848 - Otaki to North of Levin DBC\01 - 02NL1100 - Geometric Design\310203848-01-100-C1009



**LEGEND**

	EXISTING PROPERTY BOUNDARY		PROPOSED DESIGNATION BOUNDARY		30.0 CONTOUR LINE
	POSSIBLE PROPERTY ACCESS ROUTE		PROPERTY ACCESS TO BE PROVIDED (SHOWN INDICATIVELY)		SWALE EXTENT
	SPOIL SITE OPTION (INDICATIVE EXTENT)		SHARED USE PATH		BRIDGE EXTENT
	MATERIAL SUPPLY SITE (INDICATIVE EXTENT)		STORMWATER POND		ROAD PAVEMENT
	CUT AREA				
	FILL AREA				

REV	REVISIONS	DRN	CHK	APP	DATE
I	MATERIAL SUPPLY SITE HATCH UPDATED - ISSUED FOR RMA CONSENT	BH	JP	JP	21.12.22
H	VARIOUS UPDATES - ISSUED FOR RMA CONSENT	MH	KW	JP	10.10.22
G	ISSUED FOR RMA CONSENT	SS	KW	JP	19.08.22
F	ISSUED FOR CONSENT - DRAFT	SS	KW	JP	08.04.22
E	ISSUED FOR INFORMATION	SS	KC	JP	04.03.22
D	ISSUED FOR CONSENT - DRAFT	SS	KW	JP	08.12.21
C	ISSUED FOR CONSENTING - RE-ISSUE DRAFT REVIEW	SS	KW	JP	09.09.21
B	ISSUED FOR CONSENTING - DRAFT REVIEW	SS	KW	JP	30.08.21
A	ISSUED FOR DBC	SS	KW	JP	18.06.21

SURVEYED	DESIGNED	DRAWN	CAD REVIEW	DESIGN CHECK	DESIGN REVIEW	APPROVED
	Steve Muller	Steve Sutton	Steve Sutton	Jamie Povall	Keith Weale	Jamie Povall
	18.06.21	18.06.21	18.06.21	08.04.22	08.04.22	21.12.22

Client:

WAKA KOTAHI  
 OTAKI TO NORTH OF LEVIN PROJECT  
 GENERAL ARRANGEMENT PLAN - INDICATIVE  
 SHEET 11

Status Stamp	<b>FOR CONSENT</b>
Date Stamp	<b>21.12.22</b>
Scale	1 : 4000 (A3)
Drawing No.	310203848-01-100-C1010
Rev.	I



**LEGEND**

	EXISTING PROPERTY BOUNDARY		PROPOSED DESIGNATION BOUNDARY		30.0 CONTOUR LINE
	POSSIBLE PROPERTY ACCESS ROUTE		PROPERTY ACCESS TO BE PROVIDED (SHOWN INDICATIVELY)		SWALE EXTENT
	SPOIL SITE OPTION (INDICATIVE EXTENT)		SHARED USE PATH		BRIDGE EXTENT
	MATERIAL SUPPLY SITE (INDICATIVE EXTENT)		STORMWATER POND		ROAD PAVEMENT
	CUT AREA				
	FILL AREA				

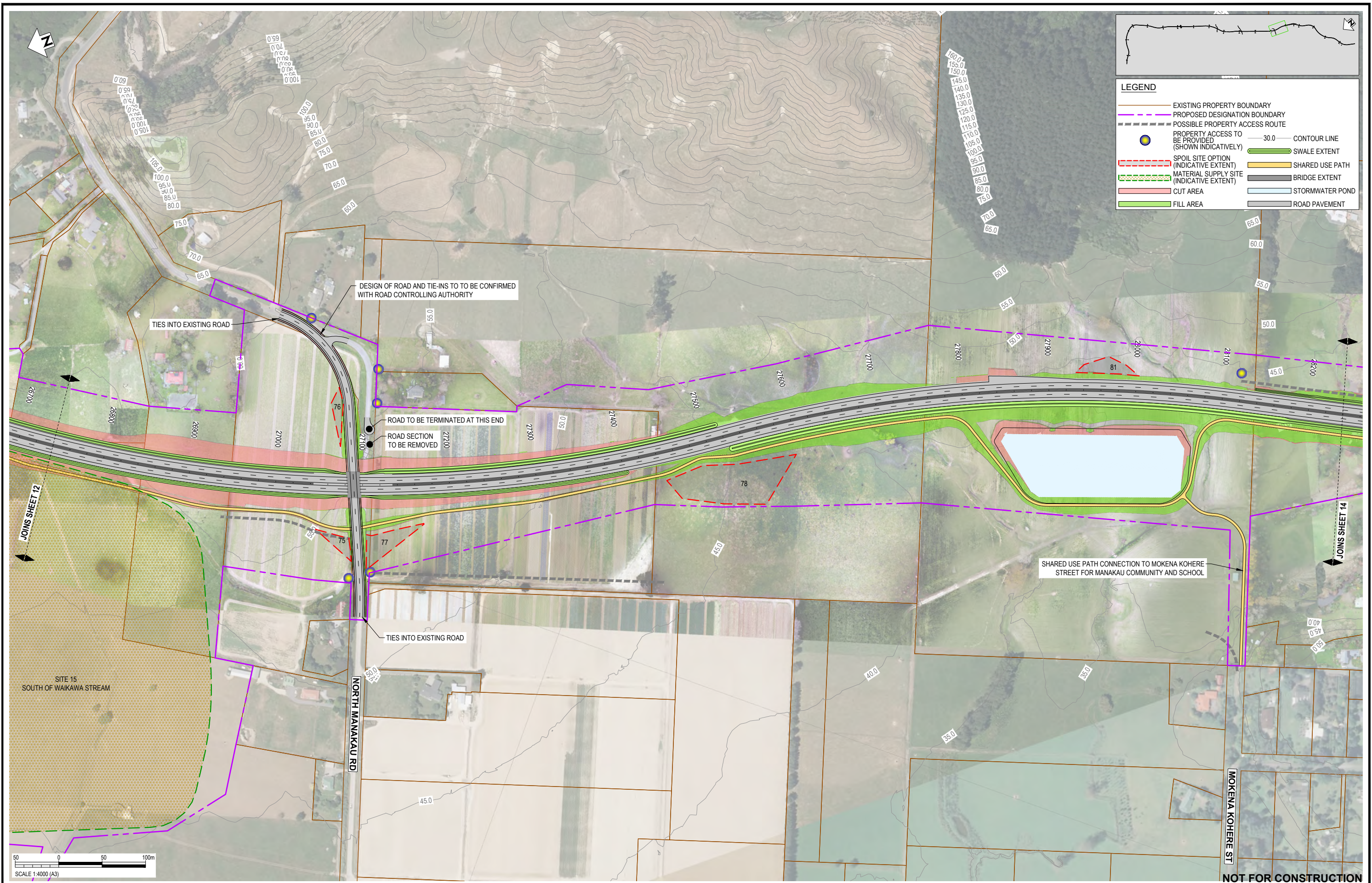
REV	REVISIONS	DRN	CHK	APP	DATE
I	MATERIAL SUPPLY SITE HATCH UPDATED - ISSUED FOR RMA CONSENT	BH	JP	JP	21.12.22
H	VARIOUS UPDATES - ISSUED FOR RMA CONSENT	MH	KW	JP	10.10.22
G	ISSUED FOR RMA CONSENT	SS	KW	JP	19.08.22
F	ISSUED FOR CONSENT - DRAFT	SS	KW	JP	08.04.22
E	ISSUED FOR INFORMATION	SS	KC	JP	04.03.22
D	ISSUED FOR CONSENT - DRAFT	SS	KW	JP	08.12.21
C	ISSUED FOR CONSENTING - RE-ISSUE DRAFT REVIEW	SS	KW	JP	09.09.21
B	ISSUED FOR CONSENTING - DRAFT REVIEW	SS	KW	JP	30.08.21
A	ISSUED FOR DBC	SS	KW	JP	18.06.21

SURVEYED	DESIGNED	DRAWN	CAD REVIEW	DESIGN CHECK	DESIGN REVIEW	APPROVED
	Steve Muller	Steve Sutton	Steve Sutton	Jamie Povall	Keith Weale	Jamie Povall
	18.06.21	18.06.21	18.06.21	08.04.22	08.04.22	21.12.22



Client: WAKA KOTAHI  
 OTAKI TO NORTH OF LEVIN PROJECT  
 GENERAL ARRANGEMENT PLAN - INDICATIVE  
 SHEET 12

Status Stamp	<b>FOR CONSENT</b>
Date Stamp	21.12.22
Scale	1 : 4000 (A3)
Drawing No.	310203848-01-100-C1011
Rev.	I



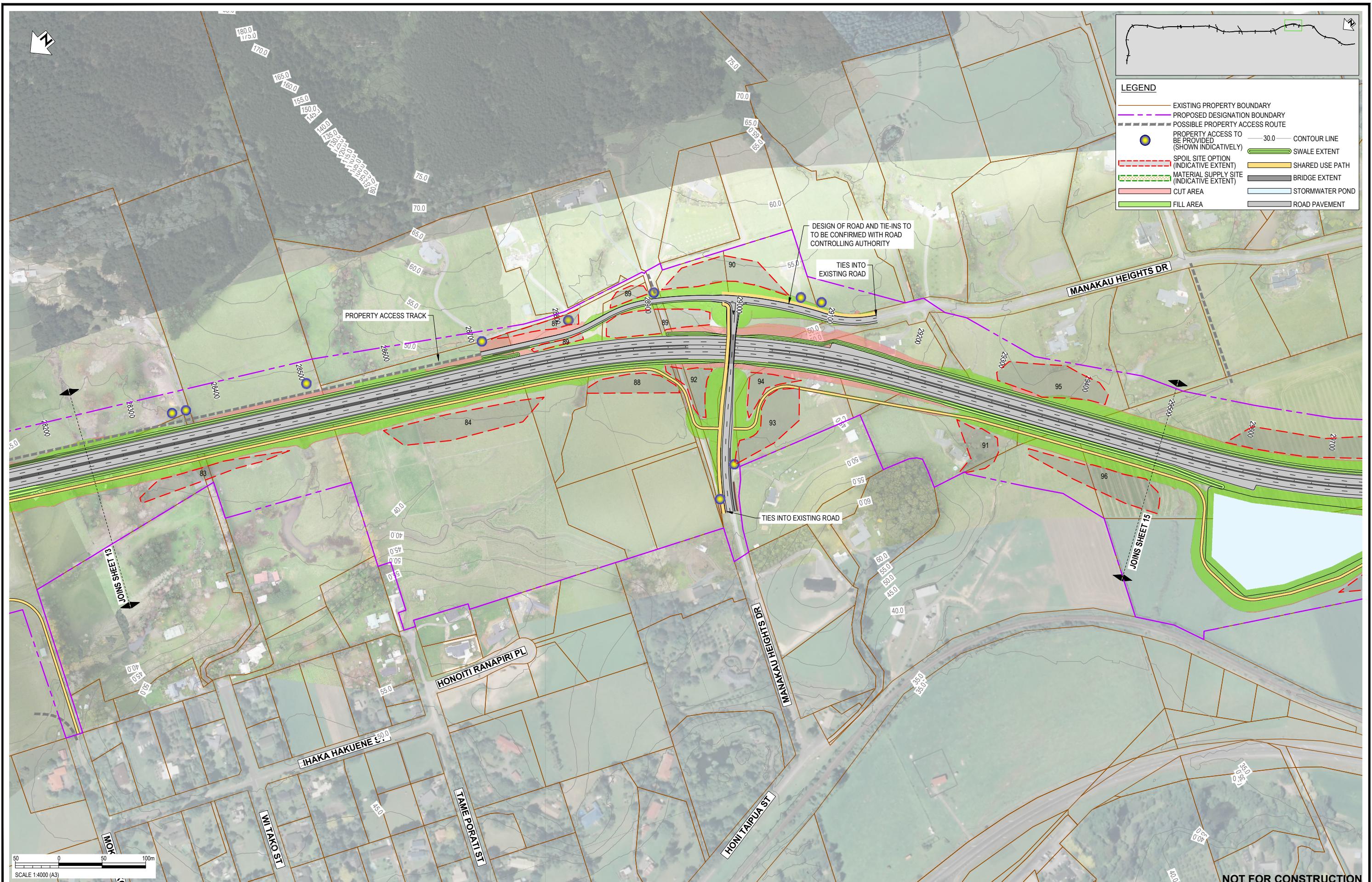
REV	REVISIONS	DRN	CHK	APP	DATE
I	MATERIAL SUPPLY SITE HATCH UPDATED - ISSUED FOR RMA CONSENT	BH	JP	JP	21.12.22
H	VARIOUS UPDATES - ISSUED FOR RMA CONSENT	MH	KW	JP	10.10.22
G	ISSUED FOR RMA CONSENT	SS	KW	JP	19.08.22
F	ISSUED FOR CONSENT - DRAFT	SS	KW	JP	08.04.22
E	ISSUED FOR INFORMATION	SS	KC	JP	04.03.22
D	ISSUED FOR CONSENT - DRAFT	SS	KW	JP	08.12.21
C	ISSUED FOR CONSENTING - RE-ISSUE DRAFT REVIEW	SS	KW	JP	09.09.21
B	ISSUED FOR CONSENTING - DRAFT REVIEW	SS	KW	JP	30.08.21
A	ISSUED FOR DBC	SS	KW	JP	18.06.21

SURVEYED		DESIGNED	DATE
Steve Muller	Steve Muller	Steve Muller	18.06.21
Steve Sutton	Steve Sutton	Steve Sutton	18.06.21
Jamie Povall	Jamie Povall	Jamie Povall	08.04.22
Keith Weale	Keith Weale	Keith Weale	08.04.22
Jamie Povall	Jamie Povall	Jamie Povall	21.12.22

Client:

WAKA KOTAHI  
 OTAKI TO NORTH OF LEVIN PROJECT  
 GENERAL ARRANGEMENT PLAN - INDICATIVE  
 SHEET 13

Status Stamp	<b>FOR CONSENT</b>
Date Stamp	<b>21.12.22</b>
Scale	1 : 4000 (A3)
Drawing No.	310203848-01-100-C1012
Rev.	1



**LEGEND**

	EXISTING PROPERTY BOUNDARY		PROPOSED DESIGNATION BOUNDARY		POSSIBLE PROPERTY ACCESS ROUTE		PROPERTY ACCESS TO BE PROVIDED (SHOWN INDICATIVELY)		30.0 CONTOUR LINE
	SPOIL SITE OPTION (INDICATIVE EXTENT)		SHARED USE PATH		SWALE EXTENT		BRIDGE EXTENT		STORMWATER POND
	MATERIAL SUPPLY SITE (INDICATIVE EXTENT)		CUT AREA		FILL AREA		ROAD PAVEMENT		

SCALE 1:4000 (A3)

50 0 50 100m

REV	DESCRIPTION	DRN	CHK	APP	DATE	PROF REGISTRATION:
J	DESIGNATION UPDATED - ISSUED FOR RMA CONSENT	MN	GL	JE	29.11.23	SURVEYED
I	MATERIAL SUPPLY SITE HATCH UPDATED - ISSUED FOR RMA CONSENT	BH	JP	JP	21.12.22	DESIGNED
H	VARIOUS UPDATES - ISSUED FOR RMA CONSENT	MH	KW	JP	10.10.22	Steve Muller
G	ISSUED FOR RMA CONSENT	SS	KW	JP	19.08.22	DRAWN
F	ISSUED FOR CONSENT - DRAFT	SS	KW	JP	08.04.22	CAD REVIEW
E	ISSUED FOR INFORMATION	SS	KC	JP	04.03.22	Steve Sutton
D	ISSUED FOR CONSENT - DRAFT	SS	KW	JP	08.12.21	DESIGN CHECK
C	ISSUED FOR CONSENTING - RE-ISSUE DRAFT REVIEW	SS	KW	JP	09.09.21	DESIGN REVIEW
B	ISSUED FOR CONSENTING - DRAFT REVIEW	SS	KW	JP	30.08.21	Keith Weale
A	ISSUED FOR DBC	SS	KW	JP	18.06.21	APPROVED
						Jon England

Client:

WAKA KOTAHI  
OTAKI TO NORTH OF LEVIN PROJECT

GENERAL ARRANGEMENT PLAN - INDICATIVE  
SHEET 14

Status Stamp	<b>FOR CONSENT</b>
Date Stamp	<b>29.11.23</b>
Scale	1 : 4000 (A3)
Drawing No.	310203848-01-100-C1013
Rev.	<b>J</b>

pw:\stntec-ap-pw.bentley.com\stntec-ap-pw-01\Documents\New Zealand Clients\NZTA (Waka Kotahi NZ Transport Agency)\310203848 - Otaki to North of Levin DBC\01 - 02NL1100 - Geometric Design\310203848-01-100-C1013





REV	DESCRIPTION	DRN	CHK	APP	DATE
I	MATERIAL SUPPLY SITE HATCH UPDATED - ISSUED FOR RMA CONSENT	BH	JP	JP	21.12.22
H	VARIOUS UPDATES - ISSUED FOR RMA CONSENT	MH	KW	JP	10.10.22
G	ISSUED FOR RMA CONSENT	SS	KW	JP	19.08.22
F	ISSUED FOR CONSENT - DRAFT	SS	KW	JP	08.04.22
E	ISSUED FOR INFORMATION	SS	KC	JP	04.03.22
D	ISSUED FOR CONSENT - DRAFT	SS	KW	JP	08.12.21
C	ISSUED FOR CONSENTING - RE-ISSUE DRAFT REVIEW	SS	KW	JP	09.09.21
B	ISSUED FOR CONSENTING - DRAFT REVIEW	SS	KW	JP	30.08.21
A	ISSUED FOR DBC	SS	KW	JP	18.06.21

SURVEYED	DESIGNED	DRAWN	CAD REVIEW	DESIGN CHECK	DESIGN REVIEW	APPROVED	DATE
	Steve Muller	Steve Sutton	Steve Sutton	Jamie Povall	Keith Weale	Jamie Povall	18.06.21
							18.06.21
							08.04.22
							08.04.22
							21.12.22

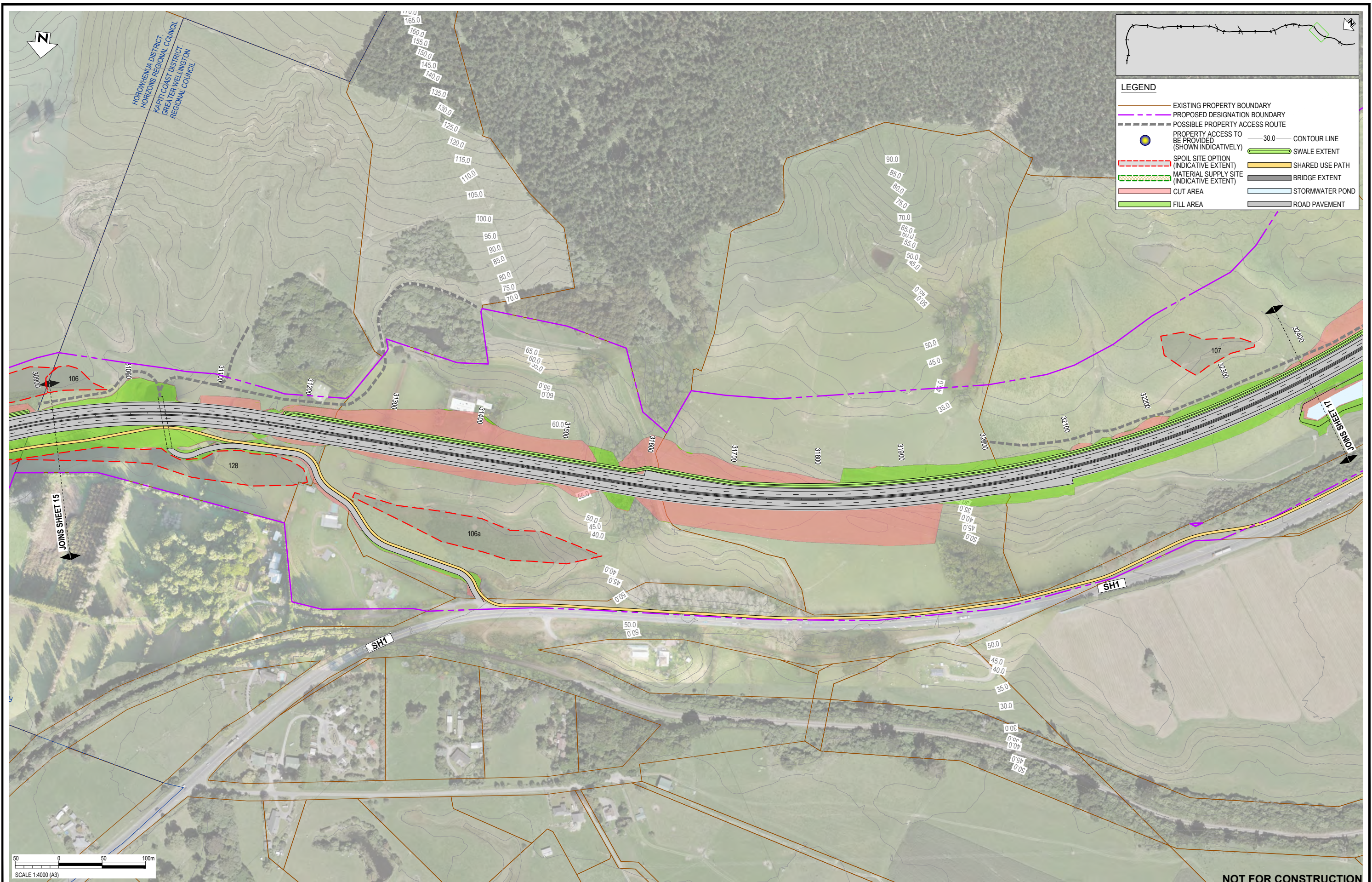
Client:




WAKA KOTAHI  
 OTAKI TO NORTH OF LEVIN PROJECT  
 GENERAL ARRANGEMENT PLAN - INDICATIVE  
 SHEET 15

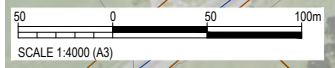
Status Stamp	<b>FOR CONSENT</b>
Date Stamp	<b>21.12.22</b>
Scale	1 : 4000 (A3)
Drawing No.	310203848-01-100-C1014
Rev.	1

pw:\stntec-ap-pw-bentley.com\stntec-ap-pw-01\Documents\New Zealand Clients\NZTA (New Zealand Transport Agency)\310203848 - Otaki to North of Levin DBC\01 - 02NL1100 - Geometric Design\310203848-01-100-C1014



**LEGEND**

	EXISTING PROPERTY BOUNDARY		PROPOSED DESIGNATION BOUNDARY		30.0 CONTOUR LINE
	POSSIBLE PROPERTY ACCESS ROUTE		PROPERTY ACCESS TO BE PROVIDED (SHOWN INDICATIVELY)		SWALE EXTENT
	SPOIL SITE OPTION (INDICATIVE EXTENT)		SHARED USE PATH		BRIDGE EXTENT
	MATERIAL SUPPLY SITE (INDICATIVE EXTENT)		STORMWATER POND		ROAD PAVEMENT
	CUT AREA				
	FILL AREA				



**NOT FOR CONSTRUCTION**

REV	DESCRIPTION	BY	DATE
I	MATERIAL SUPPLY SITE HATCH UPDATED - ISSUED FOR RMA CONSENT	BH JP JP	21.12.22
H	VARIOUS UPDATES - ISSUED FOR RMA CONSENT	MH KW JP	10.10.22
G	ISSUED FOR RMA CONSENT	SS KW JP	19.08.22
F	ISSUED FOR CONSENT - DRAFT	SS KW JP	08.04.22
E	ISSUED FOR INFORMATION	SS KC JP	04.03.22
D	ISSUED FOR CONSENT - DRAFT	SS KW JP	08.12.21
C	ISSUED FOR CONSENTING - RE-ISSUE DRAFT REVIEW	SS KW JP	09.09.21
B	ISSUED FOR CONSENTING - DRAFT REVIEW	SS KW JP	30.08.21
A	ISSUED FOR DBC	SS KW JP	18.06.21
	REVISIONS	DRN CHK APP	DATE

SURVEYED	DESIGNED	DRAWN	CAD REVIEW	DESIGN CHECK	DESIGN REVIEW	APPROVED
	Steve Muller	Steve Sutton	Steve Sutton	Jamie Povall	Keith Weale	Jamie Povall
	18.06.21	18.06.21	18.06.21	08.04.22	08.04.22	21.12.22

Client:

**WAKA KOTAHI**  
**OTAKI TO NORTH OF LEVIN PROJECT**

GENERAL ARRANGEMENT PLAN - INDICATIVE  
 SHEET 16

Status Stamp	<b>FOR CONSENT</b>
Date Stamp	<b>21.12.22</b>
Scale	1 : 4000 (A3)
Drawing No.	310203848-01-100-C1015
Rev.	I

pw:\stamtec-ap-pw-bentley.com\stamtec-ap-pw-01\Documents\New Zealand Clients\NZTA (New Zealand Transport Agency)\310203848 - Otaki to North of Levin DBC\01 - 02\NL1100 - Geometric Design\310203848-01-100-C1015



REV	DESCRIPTION	DRN	CHK	APP	DATE
I	MATERIAL SUPPLY SITE HATCH UPDATED - ISSUED FOR RMA CONSENT	BH	JP	JP	21.12.22
H	VARIOUS UPDATES - ISSUED FOR RMA CONSENT	MH	KW	JP	10.10.22
G	ISSUED FOR RMA CONSENT	SS	KW	JP	19.08.22
F	ISSUED FOR CONSENT - DRAFT	SS	KW	JP	08.04.22
E	ISSUED FOR INFORMATION	SS	KC	JP	04.03.22
D	ISSUED FOR CONSENT - DRAFT	SS	KW	JP	09.12.21
C	ISSUED FOR CONSENTING - RE-ISSUE DRAFT REVIEW	SS	KW	JP	09.09.21
B	ISSUED FOR CONSENTING - DRAFT REVIEW	SS	KW	JP	30.08.21
A	ISSUED FOR DBC	SS	KW	JP	18.06.21

PROF REGISTRATION:	DATE	APP	CHK	DRN
SURVEYED	21.12.22	JP	JP	BH
DESIGNED	18.06.21	Steve Muller		
DRAWN	18.06.21	Steve Sutton		
CAD REVIEW	18.06.21	Steve Sutton		
DESIGN CHECK	08.04.22	Jamie Povall		
DESIGN REVIEW	08.04.22	Keith Weale		
APPROVED	21.12.22	Jamie Povall		

Client:




WAKA KOTAHI  
 OTAKI TO NORTH OF LEVIN PROJECT  
 GENERAL ARRANGEMENT PLAN - INDICATIVE  
 SHEET 17

Status Stamp	<b>FOR CONSENT</b>
Date Stamp	<b>21.12.22</b>
Scale	1 : 4000 (A3)
Drawing No.	310203848-01-100-C1016
Rev.	1



**LEGEND**

	EXISTING PROPERTY BOUNDARY		PROPOSED DESIGNATION BOUNDARY		30.0 CONTOUR LINE
	POSSIBLE PROPERTY ACCESS ROUTE		PROPERTY ACCESS TO BE PROVIDED (SHOWN INDICATIVELY)		SWALE EXTENT
	SPOIL SITE OPTION (INDICATIVE EXTENT)		SHARED USE PATH		BRIDGE EXTENT
	MATERIAL SUPPLY SITE (INDICATIVE EXTENT)		STORMWATER POND		ROAD PAVEMENT
	CUT AREA				
	FILL AREA				



**NOT FOR CONSTRUCTION**

REV	REVISIONS	DRN	CHK	APP	DATE
I	MATERIAL SUPPLY SITE HATCH UPDATED - ISSUED FOR RMA CONSENT	BH	JP	JP	21.12.22
H	VARIOUS UPDATES - ISSUED FOR RMA CONSENT	MH	KW	JP	10.10.22
G	ISSUED FOR RMA CONSENT	SS	KW	JP	19.08.22
F	ISSUED FOR CONSENT - DRAFT	SS	KW	JP	08.04.22
E	ISSUED FOR INFORMATION	SS	KC	JP	04.03.22
D	ISSUED FOR CONSENT - DRAFT	SS	KW	JP	08.12.21
C	ISSUED FOR CONSENTING - RE-ISSUE DRAFT REVIEW	SS	KW	JP	09.09.21
B	ISSUED FOR CONSENTING - DRAFT REVIEW	SS	KW	JP	30.08.21
A	ISSUED FOR DBC	SS	KW	JP	18.06.21

SURVEYED	DESIGNED	DRAWN	CAD REVIEW	DESIGN CHECK	DESIGN REVIEW	APPROVED
	Steve Muller	Steve Sutton	Steve Sutton	Jamie Poval	Keith Weale	Jamie Poval
	18.06.21	18.06.21	18.06.21	08.04.22	08.04.22	21.12.22

Client:

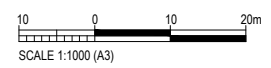
WAKA KOTAHI  
 OTAKI TO NORTH OF LEVIN PROJECT  
 GENERAL ARRANGEMENT PLAN - INDICATIVE  
 SHEET 18

Status Stamp	<b>FOR CONSENT</b>
Date Stamp	<b>21.12.22</b>
Scale	1 : 4000 (A3)
Drawing No.	310203848-01-100-C1017
Rev.	1

pw:\stntec-ap-pw.bentley.com\stntec-ap-pw-01\Documents\New Zealand Clients\NZTA (New Zealand Transport Agency)\310203848 - Otaki to North of Levin DBC\01 - 02NL1100 - Geometric Design\310203848-01-100-C1017



LEGEND	
	EXISTING PROPERTY BOUNDARY
	ROAD PAVEMENT
	PATH
	TRAFFIC ISLAND
	ROAD MARKINGS
	PROPERTY ACCESS TO BE PROVIDED (SHOWN INDICATIVELY)



**NOT FOR CONSTRUCTION**

REV	REVISIONS	DRN	CHK	APP	DATE
E	PROPERTY ACCESS POINTS AND LEGEND ADDED	BH	KW	JP	19.10.22
D	VARIOUS UPDATES - ISSUED FOR RMA CONSENT	MH	KW	JP	10.10.22
C	ISSUED FOR RMA CONSENT	SS	KW	JP	19.08.22
B	ISSUED FOR CONSENT - DRAFT	SS	KW	JP	20.04.22
A	ISSUED FOR CONSENT - DRAFT	SS	KW	JP	09.12.21

SURVEYED		
DESIGNED	Keith Weale	06.06.21
DRAWN	Reid Hermansen	06.06.21
CAD REVIEW	Steve Sutton	09.12.21
DESIGN CHECK	Jamie Povall	09.12.21
DESIGN REVIEW	Keith Weale	14.04.22
APPROVED	Jamie Povall	19.10.22
PROF REGISTRATION:		



Client: WAKA KOTAHI  
 OTAKI TO NORTH OF LEVIN PROJECT  
 GENERAL ARRANGEMENT PLAN - INDICATIVE SHEET 19  
 TARARUA ROAD / STATE HIGHWAY 1 TRAFFIC SIGNALS

Status Stamp	<b>FOR CONSENT</b>
Date Stamp	<b>19.10.22</b>
Scales	1: 1000 (A3)
Drawing No.	310203848-01-100-C1018
Rev.	<b>E</b>

pw:\stantec-ap-pw-bentley.com:stantec-ap-pw-01\Documents\New Zealand Clients\NZTA (New Zealand Transport Agency)\310203848 - Otaki to North of Levin DBC\01 - O2NL100 - Geometric Design\310203848-01-100-C1018