



Kawarau Falls Bridge Replacement Project

PROJECT UPDATE

APRIL 2018



A recently completed intensified work programme has helped ensure both lanes of the new Kawarau Falls Bridge open in May, in time for the new winter ski season.

Jobs carried out as part of the programme included work on the new walking and cycling underpass and fitting new water pipes under the bridge to cater for the rapid increase in developments south of Queenstown.

It's easier to complete this work funded by Queenstown Lakes District Council, while the new bridge is being built.

BRIDGE BENEFITS

- › Improved road network connections to Queenstown International Airport, Frankton Flats and Queenstown CBD.
- › Less traffic congestion especially during peak travel times.
- › Safer and more efficient movement of freight and people in the Frankton Flats area and south of Queenstown.
- › A new cycling and walking connection across the single lane heritage bridge.
- › A more resilient southern highway link into Queenstown.

SOMETHING TO CELEBRATE

An estimated 3000 people took part in a community walkover of the new bridge late last year. Two vehicles – one a 1926 Model T Ford, and the other a new electric Hyundai IONIQ – shared the honour of being the first to drive over the bridge.

There was plenty of excitement about the walk-over, with long queues of people waiting patiently to check out the new bridge.

A huge community effort including a sausage sizzle, coffee cart and balloons for the kids all added to the fun atmosphere and ensured a successful event. Below, on the river, two jet boats entertained the big crowd with a spectacular display of speed and power.



Many of those who walked the bridge said how great it looked. They also had plenty of praise for the project team for creating such a stunning southern gateway into Queenstown that they, and future generations, could be proud of.

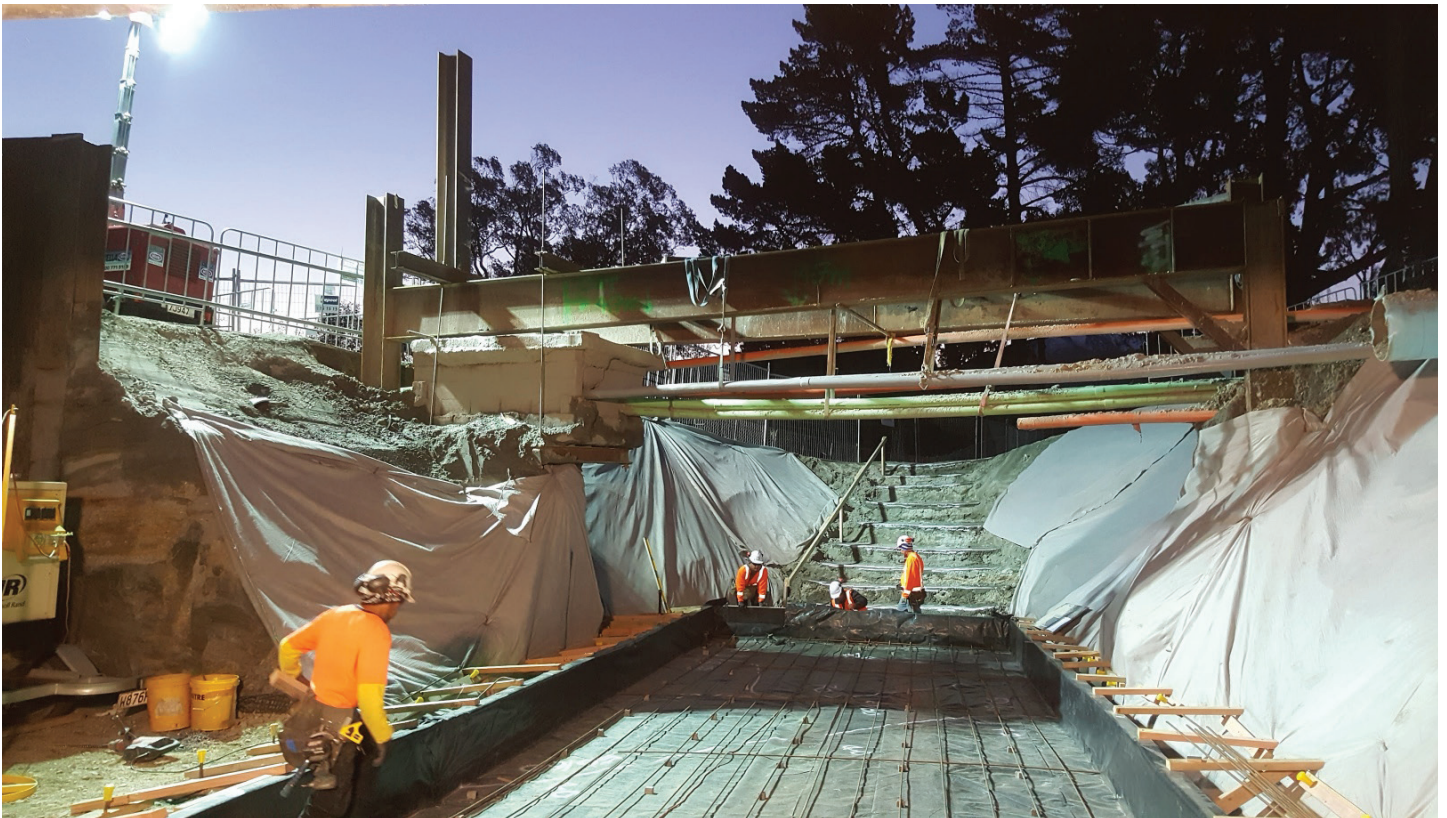
WHAT'S NEXT?

Extra power and telecommunications ducting is being installed under the new bridge to meet increasing demands of the area's growing population.

Completing this future-proofing work while the bridge is still under construction is the best option and reduces inconvenience to locals. It removes the need to dig up the road again or limit access to the bridge in future.

The Queenstown Cycle Trail has been temporarily relocated. It will be reinstated once links to a new shared path for walkers and cyclists on the heritage bridge are completed.

A 140 metre-long rock retaining wall on the southern river bank has been finished. Rocks were packed by hand into nearly 800 steel baskets to create the wall. The steel mesh blends with the rocks, creating an attractive feature wall that separates the highway and river.



Work on the cycle and pedestrian cycle underpass at the northern end of the new bridge was carried out as part of the successful intensified work programme.



PROJECT CONTACTS

McConnell Dowell **0508 KAWARAU (0508 529 2728)** or
Phil Dowsett NZ Transport Agency Project Manager phil.dowsett@nzta.govt.nz
Keep up with progress at: www.nzta.govt.nz/kawarau-falls