



Mt Iron roundabout



The new Mt Iron Roundabout pictured above is taking shape and on track to open by April 2024. It will move people more safely through the busy SH6/SH84 intersection near Wanaka and offer safe and improved access for cyclists and pedestrians.

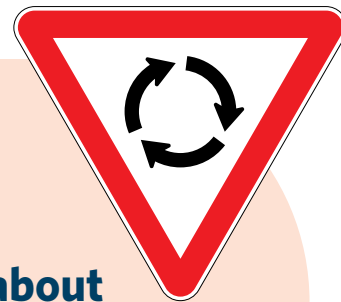
What to expect over the Christmas-New Year holiday break

The roundabout will be operational over the holiday period (standard roundabout give way rules apply).

A lower 50 km/h speed limit will be in place over the holiday period.

As visitors flock into Wanaka over the Christmas-New Year holiday break, make your journey less stressful by

- Being prepared for delays
- Allowing extra time for your journey
- Driving carefully
- Observing on-site signs
- Following traffic management crew directions.



Roundabout rules recap

- 1 You must give way** to vehicles already on the roundabout on entering the roundabout from your right.
- 2 Follow any instructions** given by a sign or road marking.

The new Roundabout in use, as it will be over the upcoming holiday season.



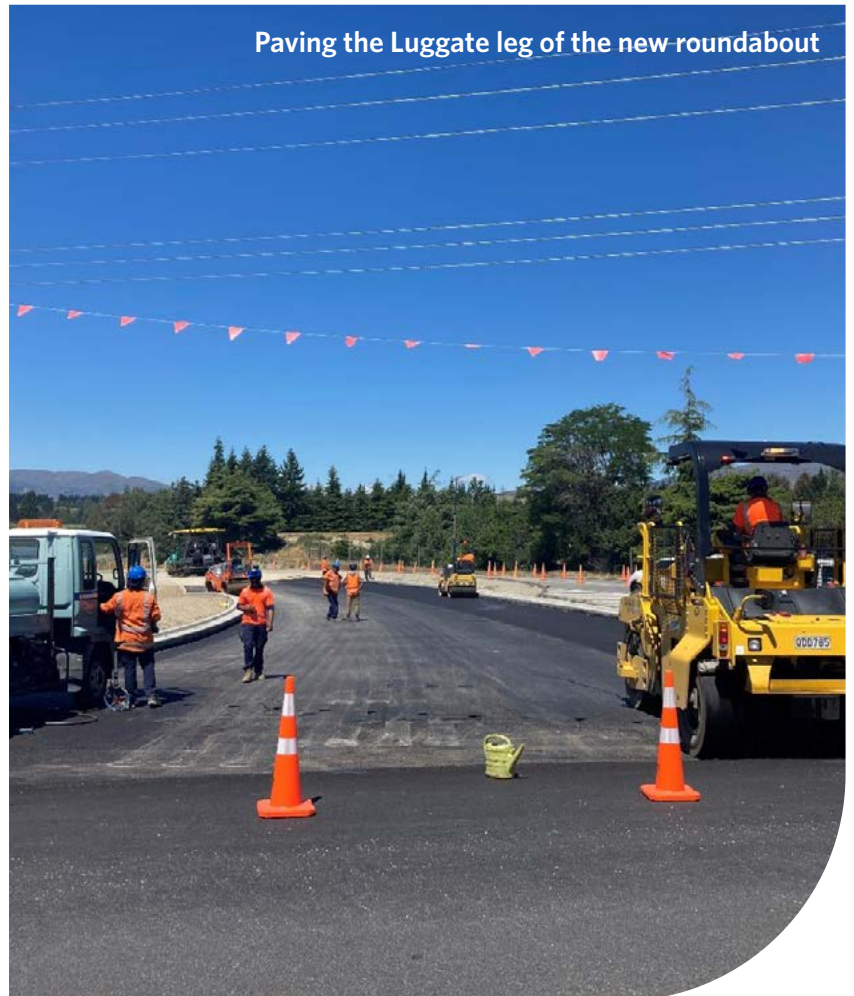
In the New Year

Construction work will pause on Wednesday **20 December 2023** and resume on **Tuesday 16 January 2024**. We will be working on the Luggate leg of the roundabout then build the Riverbank Road lanes.

With teams back on site from 16 January, the speed limit will drop to 30km/h to keep people working on site safe. While the last two roundabout legs are being constructed, vehicles will need to travel on temporary traffic lanes. Over this period, we also expect to complete landscaping and drainage.

While driving through the new roundabout follow both the on-site signs and directions of work site crews. This is one small thing you can do to help keep people working on site, other drivers, and nearby residents safe.

Paving the Luggate leg of the new roundabout



For more information:

Email any questions about this project to mountironupgrade@nzta.govt.nz

Or visit our project website nzta.govt.nz/projects/mt-iron-roundabout