



# Appendix A

## Alignments Between North of Otaki and Peka Peka Road

Opus International Consultants Limited  
Wellington Office  
Level 9, Majestic Centre, 100 Willis Street  
PO Box 12 003, Wellington 6144,  
New Zealand

Telephone: +64 4 471 7000  
Facsimile: +64 4 471 1397

Date: August 2009  
Reference: 5C1333.02

Issue	Description	Date	App'd

Check by	CPD	Checked	
Drawn by	CPD	Date	5.7.2002
Approved		Scale	SNR
			www.meritec.org

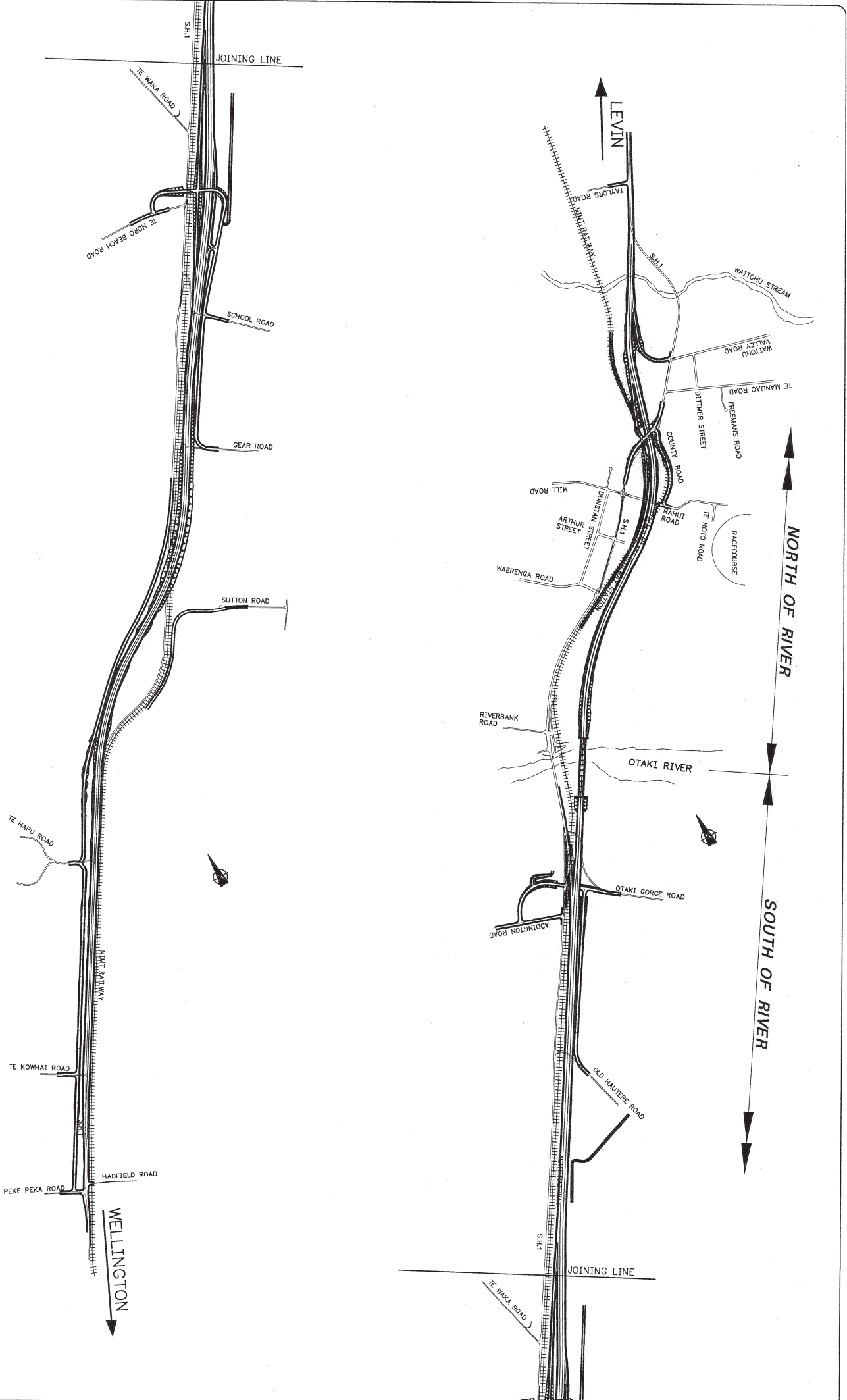


WANGANUI REGIONAL OFFICE

PSW-13 NORTH OTAKI TO PEKA PEKA ROAD FOUR LANING  
RP. 915/3.03 to RP. 915/15.70

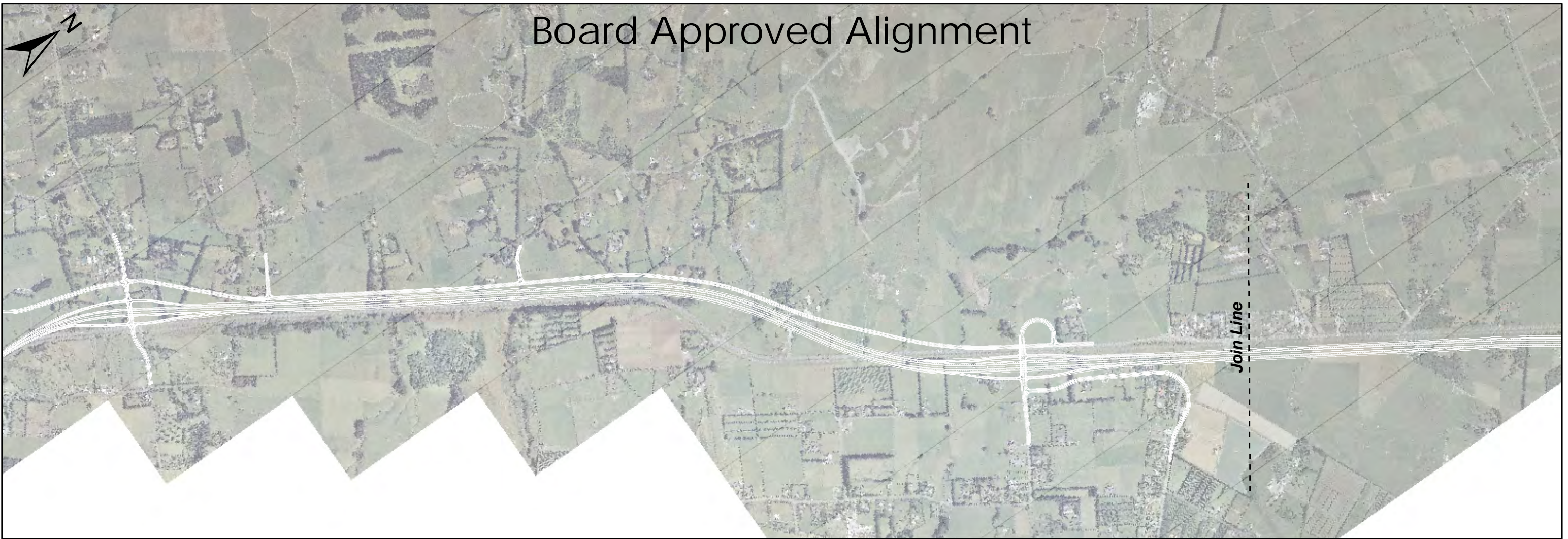
SCHEME PHASE EASTERN IMPROVED ROUTE PLAN

Scale	A1
NOT TO SCALE	
Project No.	5981718
Drawing No.	SP70-6





# Board Approved Alignment





# Opus Recommended Alignment

