

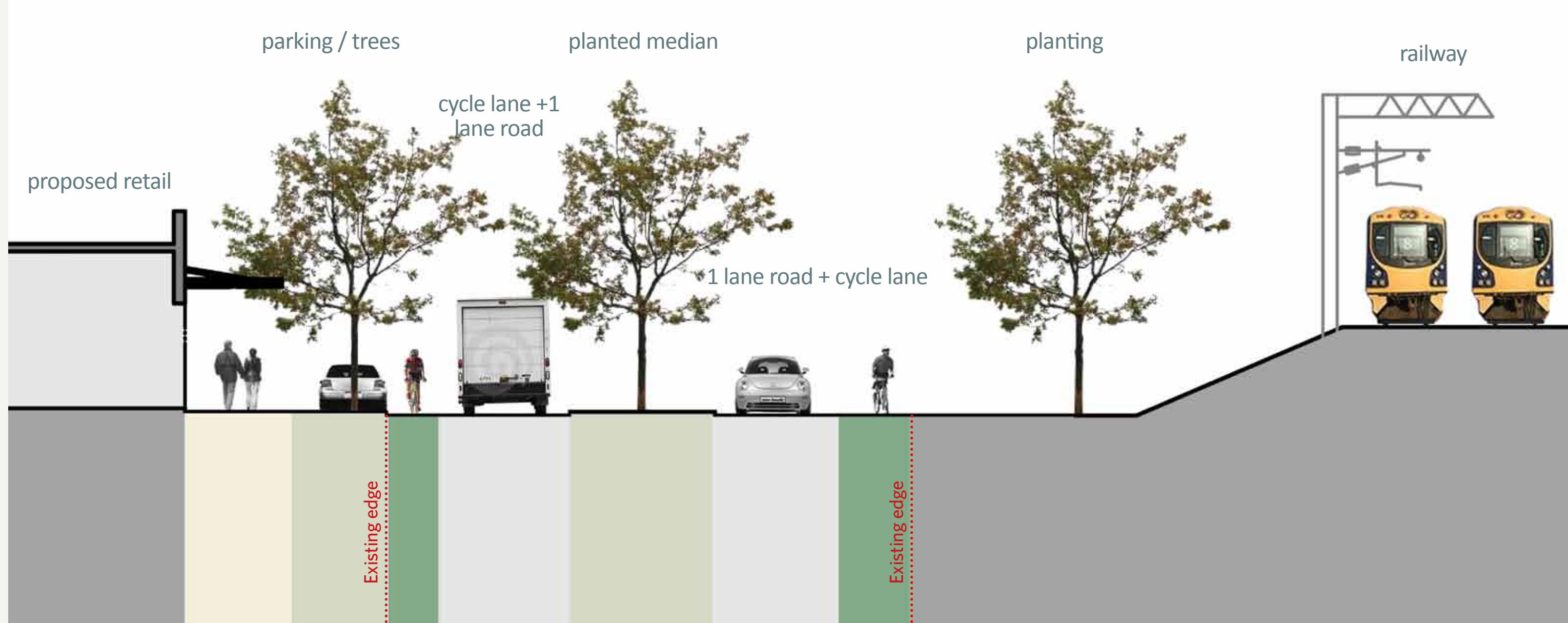
Current State Highway 1 modification

Paraparaumu Town Centre

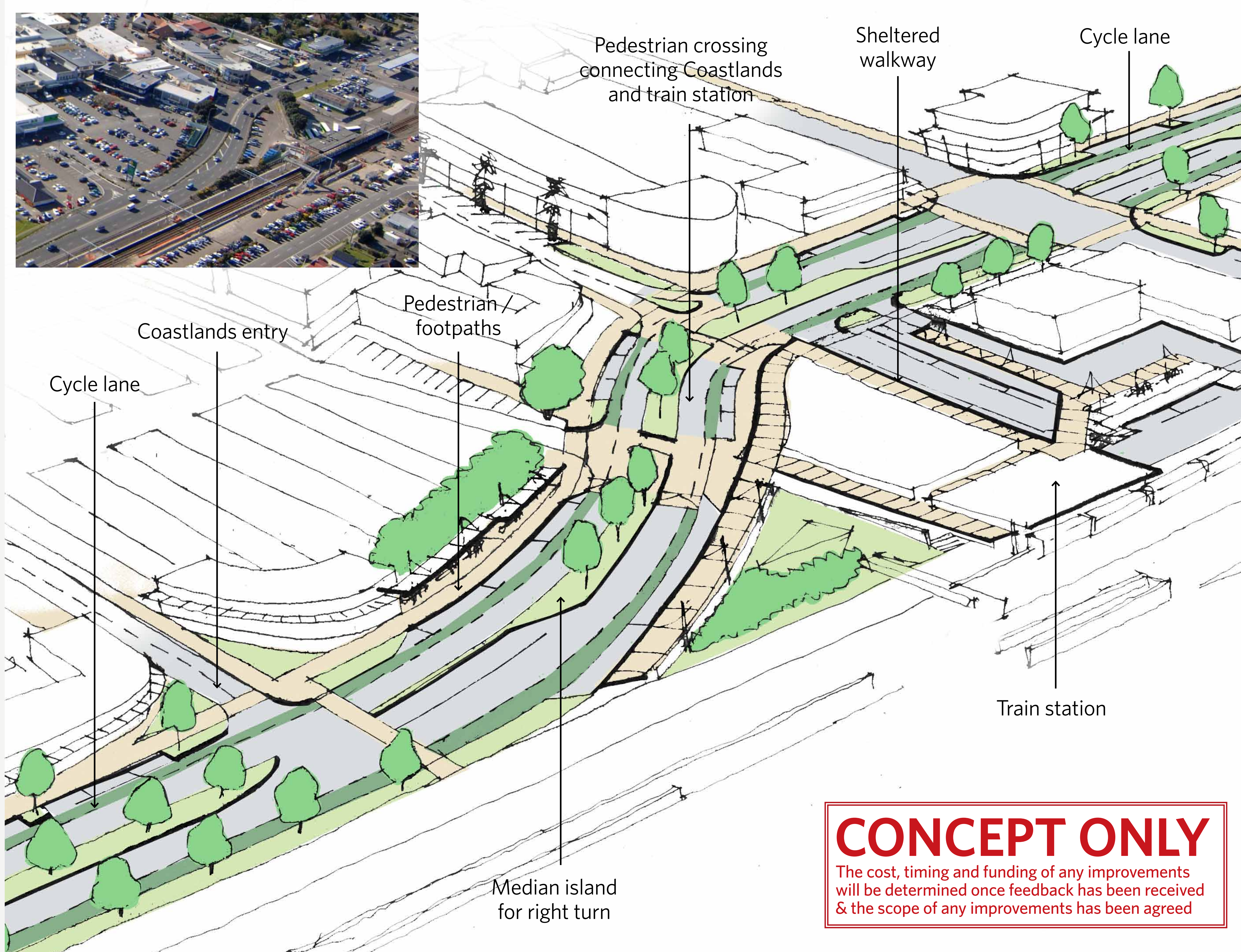
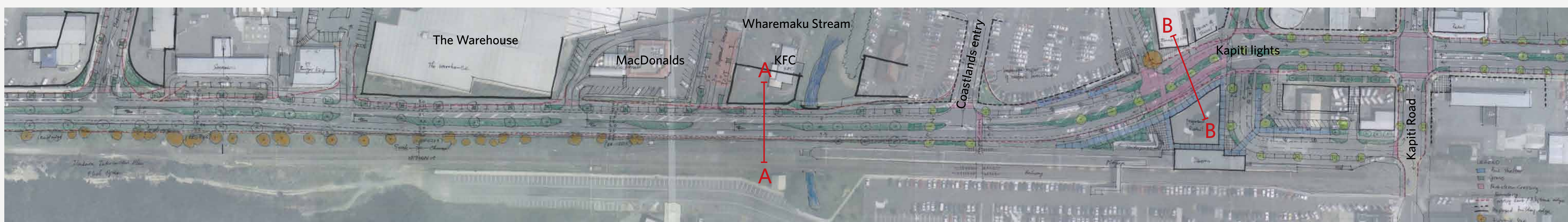
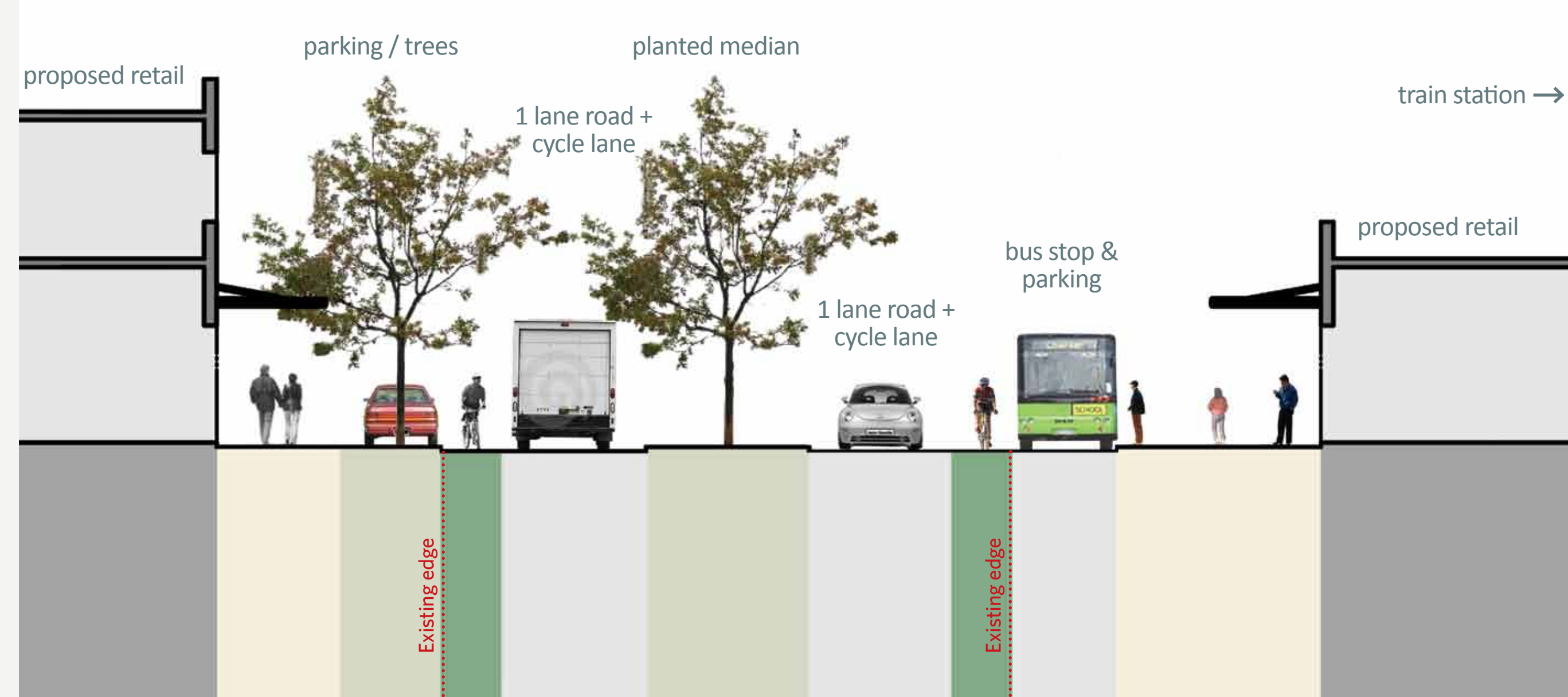
Concept options

- Create a more pleasant walking and shopping environment including footpath and street furniture improvements
- Enhance pedestrian flow from train station to Coastlands and shops across the road, with wider footpaths and pedestrian crossings
- Create a more pleasant, better oriented bus stop/interchange between train station, street and shops
- Locate bus stops on street frontage to improve bus routes
- Reduce through traffic and speeds
- Plant trees between carparks and in raised medians to create amenity and reduce traffic speed
- Encourage new shop fronts with new kerbside parking and improved pedestrian amenity
- Create a narrower carriageway with tighter bends
- Use the road improvements to encourage new business, shopping and other amenities

Possible cross section through Paraparaumu town centre (see A-A below)



Possible cross section through Paraparaumu Train Station (see B-B below)



CONCEPT ONLY
The cost, timing and funding of any improvements will be determined once feedback has been received & the scope of any improvements has been agreed

Possible layout for Paraparaumu Town Centre