

**KEY**

<b>MP</b> MASSED PLANTING	<b>TFx</b> TREES - FORESTRY GRADE	<b>GL</b> GRASS - LOW	<b>WP</b> WETLAND PLANTING
<b>ML</b> MASSED PLANTING - LOW	<b>TS+</b> TREES - SPECIMEN GRADE	<b>GS</b> GRASS - SWALE	<b>RP</b> RIPARIAN PLANTING
<b>MT</b> MASSED PLANTING - TREE ENRICHMENT	<b>TP0</b> TREES - POLE GRADE	<b>GR</b> GRASS - ROUGH	
<b>MS</b> MASSED PLANTING - SWALE	<b>^</b> TREE WIND SHELTER		
<b>MT A 1</b> 43R-8201	<b>EXISTING VEGETATION TO BE RETAINED</b>	<b>DESIGNATION</b>	

**NOTES:**

- REFER TO PLANTING SCHEDULES (8211) FOR PLANT MIX DETAILS.
- REFER TO STANDARD PLANTING DETAILS (8900 SERIES) FOR PLANTING DETAIL.
- A 1.5m OFFSET FROM THE VERGE HAS BEEN MADE TO ACCOMMODATE THE EXTENT OF SUBBASE. THE ACTUAL OFFSET IS TO BE CONFIRMED ON SITE.

A1 REPRODUCTION SCALE

A3 REPRODUCTION SCALE

No.	Revision	By	Chk	Chk-V	Appd	Date
1	FOR CONSTRUCTION	MP	MM	DH	SW	09.04.15

Original Scale (A1)	Design	Drawn	Date	Approved For Construction
1:500	F BAGGALEY	M POWELL	30.09.14	D STIRRAT
Reduced Scale (A3)	Dwg Check	B EVANS	10.03.15	
1:1000	M MEERVELD	M MEERVELD	08.04.15	Date 09.04.13

**NZ TRANSPORT AGENCY**  
WAKA KOTAHĪ

**MacKays to Peka Peka**  
Wellington Northern Corridor

Project: SH1 MACKAYS TO PEKA PEKA EXPRESSWAY  
RP 1012/0.00 TO 1023/5.00

Title: TE MOANA INTERCHANGE PLANTING PLANS SHEET 1

Drawing No: M2PP-51R-D-DWG-8201  
Rev: 1

**510 ORIGINAL DRAWING IN COLOUR FOR CONSTRUCTION**



**KEY**

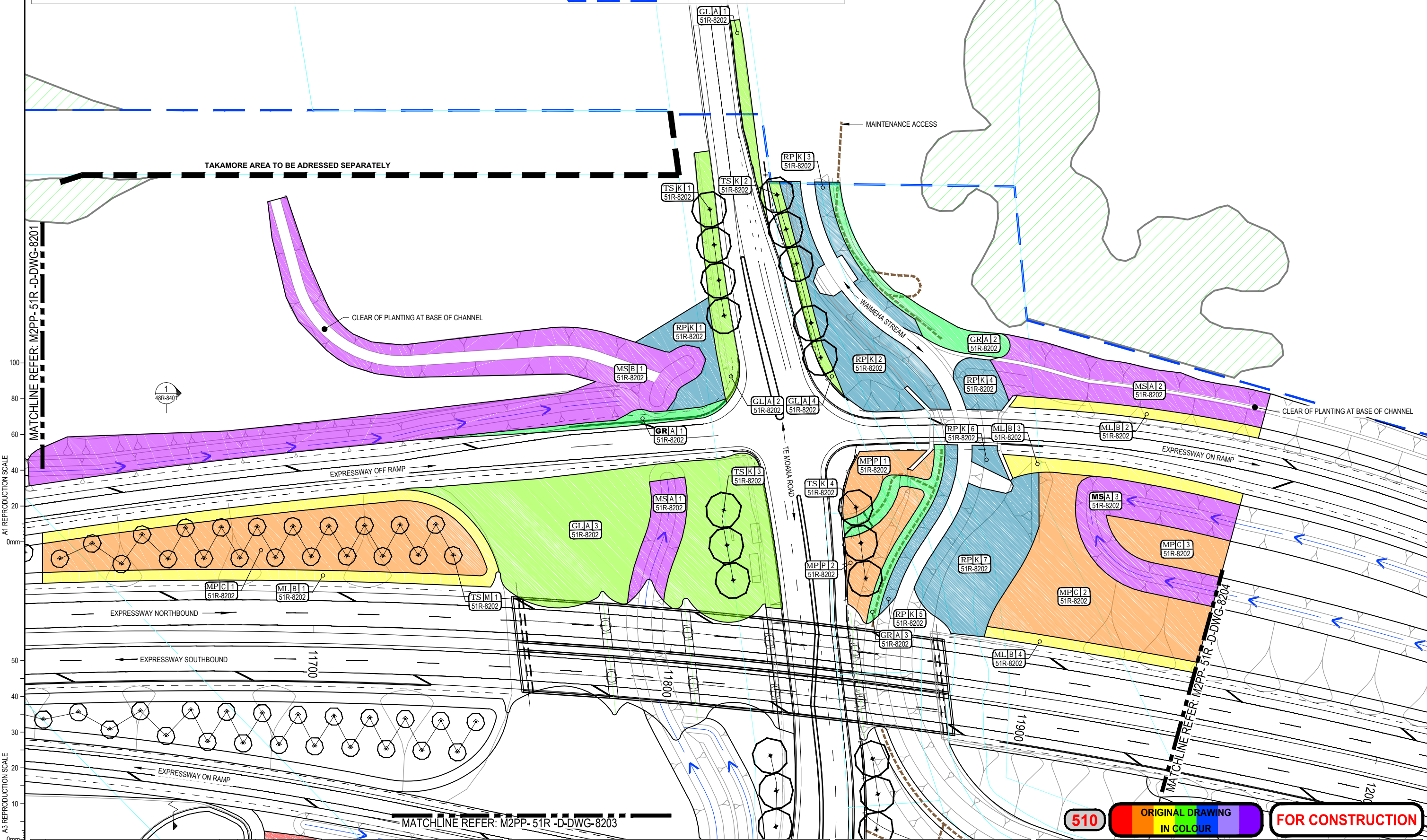
- MP** MASSED PLANTING
- ML** MASSED PLANTING - LOW
- MT** MASSED PLANTING - TREE ENRICHMENT
- MS** MASSED PLANTING - SWALE
- TF** TREES - FORESTRY GRADE
- TS** TREES - SPECIMEN GRADE
- TP** TREES - POLE GRADE
- ^ TREE WIND SHELTER
- EXISTING VEGETATION TO BE RETAINED
- GL** GRASS - LOW
- GS** GRASS - SWALE
- GR** GRASS - ROUGH
- WP** WETLAND PLANTING
- RP** RIPARIAN PLANTING
- DESIGNATION**

**NOTES:**

1. REFER TO PLANTING SCHEDULES (8211) FOR PLANT MIX DETAILS.
2. REFER TO STANDARD PLANTING DETAILS (8900 SERIES) FOR PLANTING DETAIL.
3. A 1.5m OFFSET FROM THE VERGE HAS BEEN MADE TO ACCOMMODATE THE EXTENT OF SUBBASE. THE ACTUAL OFFSET IS TO BE CONFIRMED ON SITE.

**NOTE:**

RIPARIAN PLANTING AT THE STREAM EDGE (RP-K-3 AND RP-K-5) HAVE LOWER GROWING SPECIES TO ALLOW DIGGER TO REACH OVER VEGETATION WHEN CLEARING THE STREAM. RIPARIAN PLANTING (RP-K-2, RP-K-4, RP-K-6 & RP-K-7) IS TO HAVE TALLER PLANTS NOTED BY \* ON SCHEDULE, CLOSE TO THE STREAM EDGE TO GIVE SHADING TO THE STREAM.



MATCHLINE REFER: M2PP-51R-D-DWG-8201

A1 REPRODUCTION SCALE

A3 REPRODUCTION SCALE

MATCHLINE REFER: M2PP-51R-D-DWG-8204

MATCHLINE REFER: M2PP-51R-D-DWG-8203

No.	Revision	By	Chk	Chk-V	Appd	Date
1	FOR CONSTRUCTION	MP	MM	DH	SW	09.04.15

Original Scale (A1)	1:500	Design	F BAGGLEY	30.09.14	Approved For Construction
Reduced Scale (A3)	1:1000	Drawn	M POWELL	30.09.14	D STIRRAW
		Design Checker	B EVANS	10.03.15	
		Design Check	M MEERVELD	08.04.15	Date 09.04.15



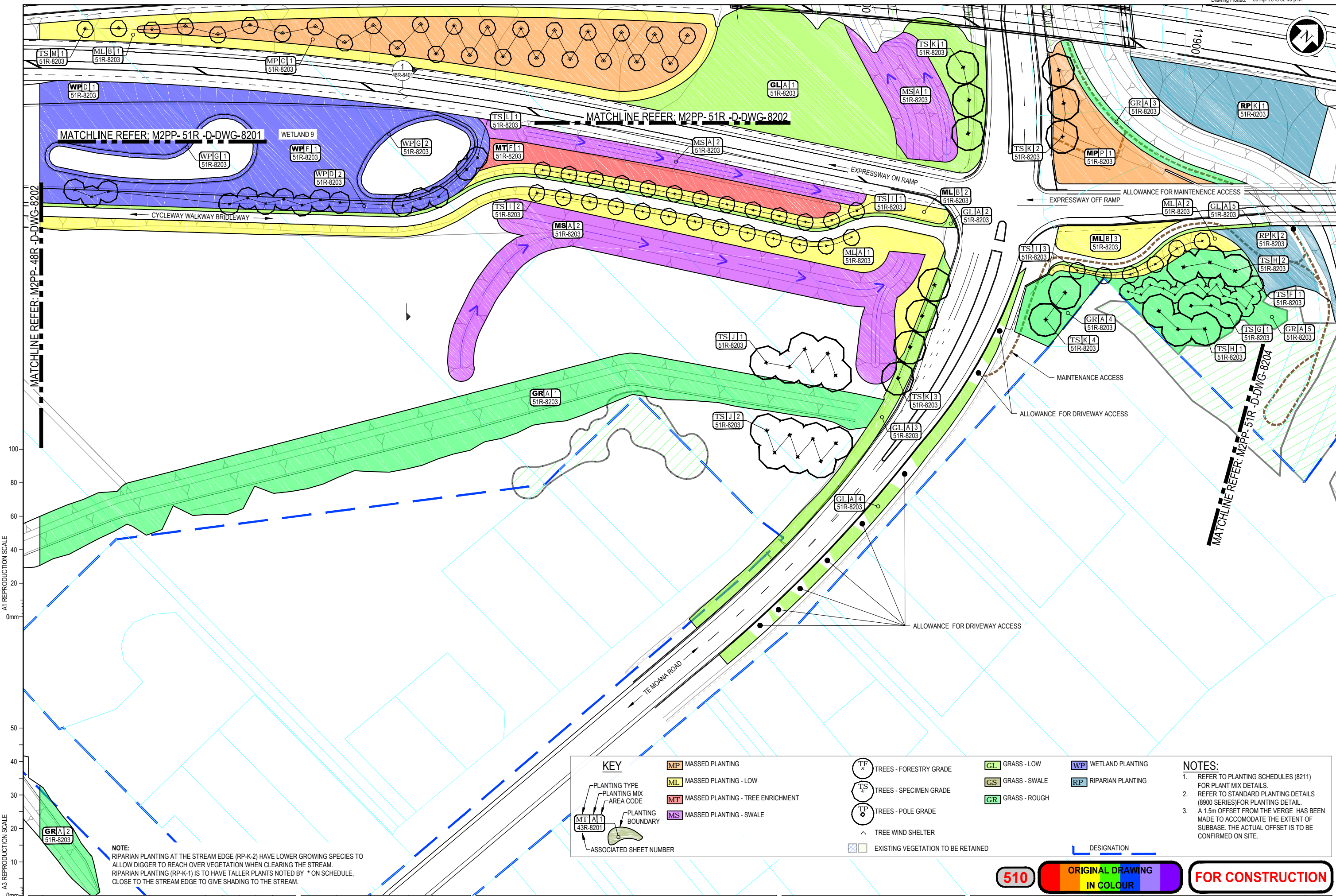
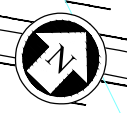
**MacKays to Peka Peka**  
Wellington Northern Corridor

Project: SH1 MACKAYS TO PEKA PEKA EXPRESSWAY  
RP 1012/0.00 TO 1023/5.00

Title: TE MOANA INTERCHANGE PLANTING PLANS SHEET 2

Drawing No: M2PP-51R-D-DWG-8202  
Rev: 1

**510 ORIGINAL DRAWING IN COLOUR FOR CONSTRUCTION**



MATCHLINE REFER: M2PP-48R-D-DWG-8202

MATCHLINE REFER: M2PP-51R-D-DWG-8204

A1 REPRODUCTION SCALE

A3 REPRODUCTION SCALE

**NOTE:**  
 RIPARIAN PLANTING AT THE STREAM EDGE (RP-K-2) HAVE LOWER GROWING SPECIES TO ALLOW DIGGER TO REACH OVER VEGETATION WHEN CLEARING THE STREAM.  
 RIPARIAN PLANTING (RP-K-1) IS TO HAVE TALLER PLANTS NOTED BY \* ON SCHEDULE, CLOSE TO THE STREAM EDGE TO GIVE SHADING TO THE STREAM.

KEY		DESIGNATION	
MP	MASSED PLANTING	GL	GRASS - LOW
ML	MASSED PLANTING - LOW	GS	GRASS - SWALE
MT	MASSED PLANTING - TREE ENRICHMENT	GR	GRASS - ROUGH
MS	MASSED PLANTING - SWALE	WP	WETLAND PLANTING
TSK	TREES - FORESTRY GRADE	RP	RIPARIAN PLANTING
TS+	TREES - SPECIMEN GRADE		
TSO	TREES - POLE GRADE		
^	TREE WIND SHELTER		
[ ]	EXISTING VEGETATION TO BE RETAINED		

**NOTES:**  
 1. REFER TO PLANTING SCHEDULES (8211) FOR PLANT MIX DETAILS.  
 2. REFER TO STANDARD PLANTING DETAILS (8900 SERIES) FOR PLANTING DETAIL.  
 3. A 1.5m OFFSET FROM THE VERGE HAS BEEN MADE TO ACCOMMODATE THE EXTENT OF SUBBASE. THE ACTUAL OFFSET IS TO BE CONFIRMED ON SITE.

No.	Revision	By	Chk	Chk-V	Appd	Date
1	FOR CONSTRUCTION	MP	MM	DH	SW	09.04.15

Original Scale (A1)	1:500
Reduced Scale (A3)	1:1000
Design	F BAGGLEY 30.09.14
Drawn	M POWELL 30.09.14
Design Checker	B EVANS 10.03.15
Dwg Check	M MEERVELD 08.04.15
Date	09.04.13

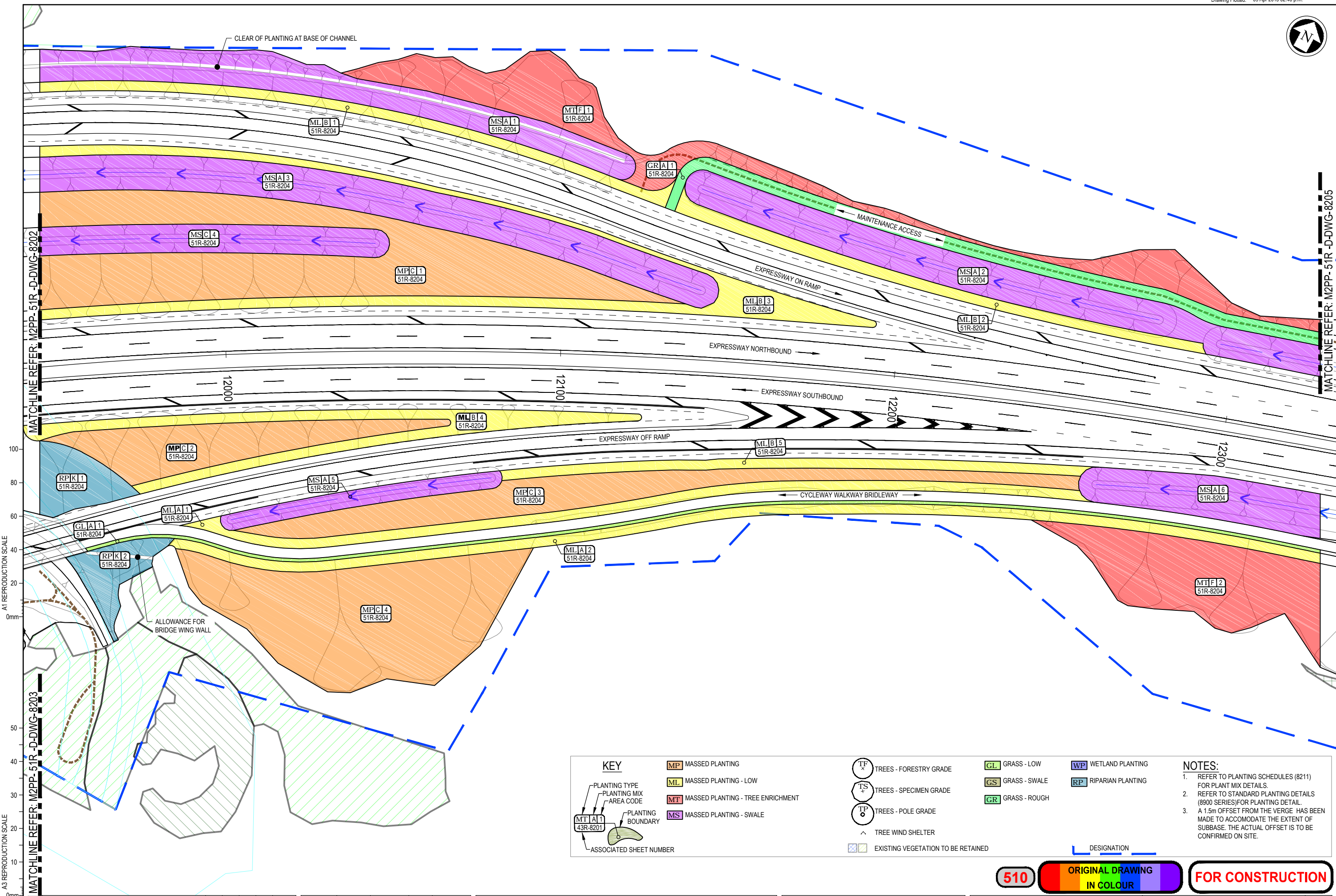


**MacKays to Peka Peka**  
 Wellington Northern Corridor

Project: SH1 MACKAYS TO PEKA PEKA EXPRESSWAY  
 RP 1012/0.00 TO 1023/5.00

Title: TE MOANA INTERCHANGE PLANTING PLANS SHEET 3

Drawing No: M2PP-51R-D-DWG-8203 Rev: 1



A1 REPRODUCTION SCALE  
0mm  
20  
30  
40  
50  
60  
80  
100

<b>KEY</b> PLANTING TYPE PLANTING MIX AREA CODE PLANTING BOUNDARY ASSOCIATED SHEET NUMBER		<b>MP</b> MASSED PLANTING <b>ML</b> MASSED PLANTING - LOW <b>MT</b> MASSED PLANTING - TREE ENRICHMENT <b>MS</b> MASSED PLANTING - SWALE	TREES - FORESTRY GRADE TREES - SPECIMEN GRADE TREES - POLE GRADE TREE WIND SHELTER EXISTING VEGETATION TO BE RETAINED	<b>GL</b> GRASS - LOW <b>GS</b> GRASS - SWALE <b>GR</b> GRASS - ROUGH	<b>WVP</b> WETLAND PLANTING <b>RP</b> RIPARIAN PLANTING	<b>NOTES:</b> 1. REFER TO PLANTING SCHEDULES (8211) FOR PLANT MIX DETAILS. 2. REFER TO STANDARD PLANTING DETAILS (8900 SERIES) FOR PLANTING DETAIL. 3. A 1.5m OFFSET FROM THE VERGE HAS BEEN MADE TO ACCOMMODATE THE EXTENT OF SUBBASE. THE ACTUAL OFFSET IS TO BE CONFIRMED ON SITE.
--	--	--	---	---	--	--

<b>510</b>	ORIGINAL DRAWING IN COLOUR	<b>FOR CONSTRUCTION</b>
------------	-------------------------------	-------------------------

No.	Revision	By	Chk	Chk-V	Appd	Date
1	FOR CONSTRUCTION	MP	MM	DH	SW	09.04.15

Original Scale (A1)	Design	F BAGGLEY	30.09.14	Approved For Construction
1:500	Drawn	M POWELL	30.09.14	D STIRRAT
Reduced Scale (A3)	Drawn	B EVANS	10.03.15	
1:1000	Check	M MEERVELD	08.04.15	Date 09.04.15

**NZ TRANSPORT AGENCY**  
 WAKA KOTAHĪ  
**MacKays to Peka Peka**  
 Wellington Northern Corridor

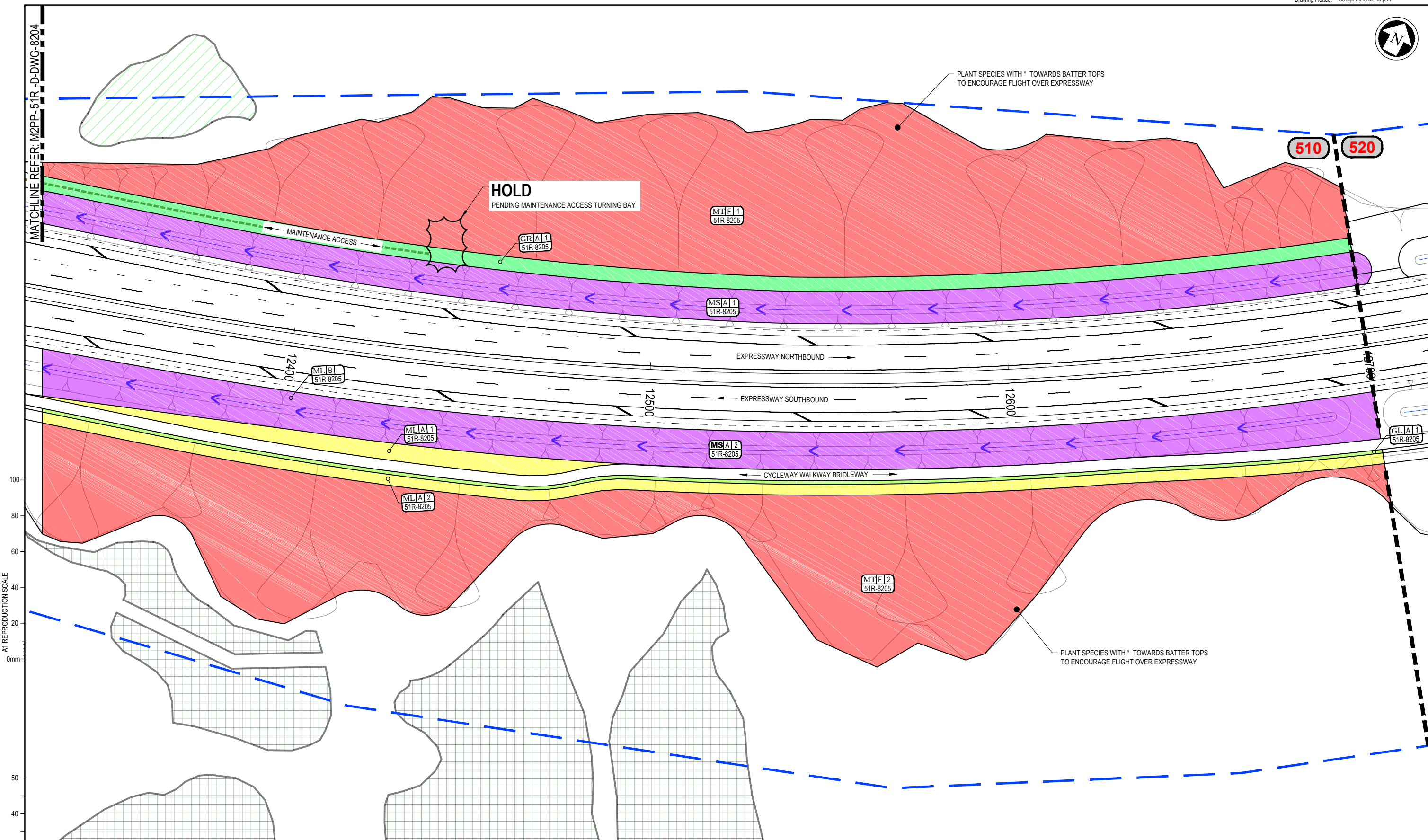
Project: SH1 MACKAYS TO PEKA PEKA EXPRESSWAY  
 RP 1012/0.00 TO 1023/5.00

Title: TE MOANA INTERCHANGE PLANTING PLANS SHEET 4

Document No: M2PP-51R-D-DWG-8204  
 Drawing No: M2PP-51R-D-DWG-8204  
 Rev: 1



MATCHLINE REFER: M2PP-51R-D-DWG-8204



PLANT SPECIES WITH \* TOWARDS BATTER TOPS TO ENCOURAGE FLIGHT OVER EXPRESSWAY

**HOLD**  
PENDING MAINTENANCE ACCESS TURNING BAY

510 520

A1 REPRODUCTION SCALE  
0mm  
20  
40  
60  
80  
100

A3 REPRODUCTION SCALE  
0mm  
10  
20  
30  
40  
50

PLANT SPECIES WITH \* TOWARDS BATTER TOPS TO ENCOURAGE FLIGHT OVER EXPRESSWAY

**KEY**

PLANTING TYPE	MASSED PLANTING
PLANTING MIX AREA CODE	MASSED PLANTING - LOW
PLANTING BOUNDARY	MASSED PLANTING - TREE ENRICHMENT
ASSOCIATED SHEET NUMBER	MASSED PLANTING - SWALE

TREES - FORESTRY GRADE	GRASS - LOW	WETLAND PLANTING
TREES - SPECIMEN GRADE	GRASS - SWALE	RIPARIAN PLANTING
TREES - POLE GRADE	GRASS - ROUGH	
TREE WIND SHELTER		
EXISTING VEGETATION TO BE RETAINED		

**NOTES:**

- REFER TO PLANTING SCHEDULES (8211) FOR PLANT MIX DETAILS.
- REFER TO STANDARD PLANTING DETAILS (8900 SERIES) FOR PLANTING DETAIL.
- A 1.5m OFFSET FROM THE VERGE HAS BEEN MADE TO ACCOMMODATE THE EXTENT OF SUBBASE. THE ACTUAL OFFSET IS TO BE CONFIRMED ON SITE.

No.	Revision	By	Chk	Chk-V	Appd	Date
1	FOR CONSTRUCTION	MP	MM	DH	SW	09.04.15

Original Scale (A1)	1:500	Design	F BAGGLEY	30.09.14	Approved For Construction	30.09.14
Reduced Scale (A3)	1:1000	Drawn	M POWELL	30.09.14	Drawn	D STIRRAAT
		Check	B EVANS	10.03.15	Check	M MEERVELD
		Date	08.04.15	Date	09.04.15	



**MacKays to Peka Peka**  
Wellington Northern Corridor

Project: SH1 MACKAYS TO PEKA PEKA EXPRESSWAY  
RP 1012/0.00 TO 1023/5.00

Title: TE MOANA INTERCHANGE PLANTING PLANS SHEET 5

Drawing No: M2PP-51R-D-DWG-8205  
Rev: 1

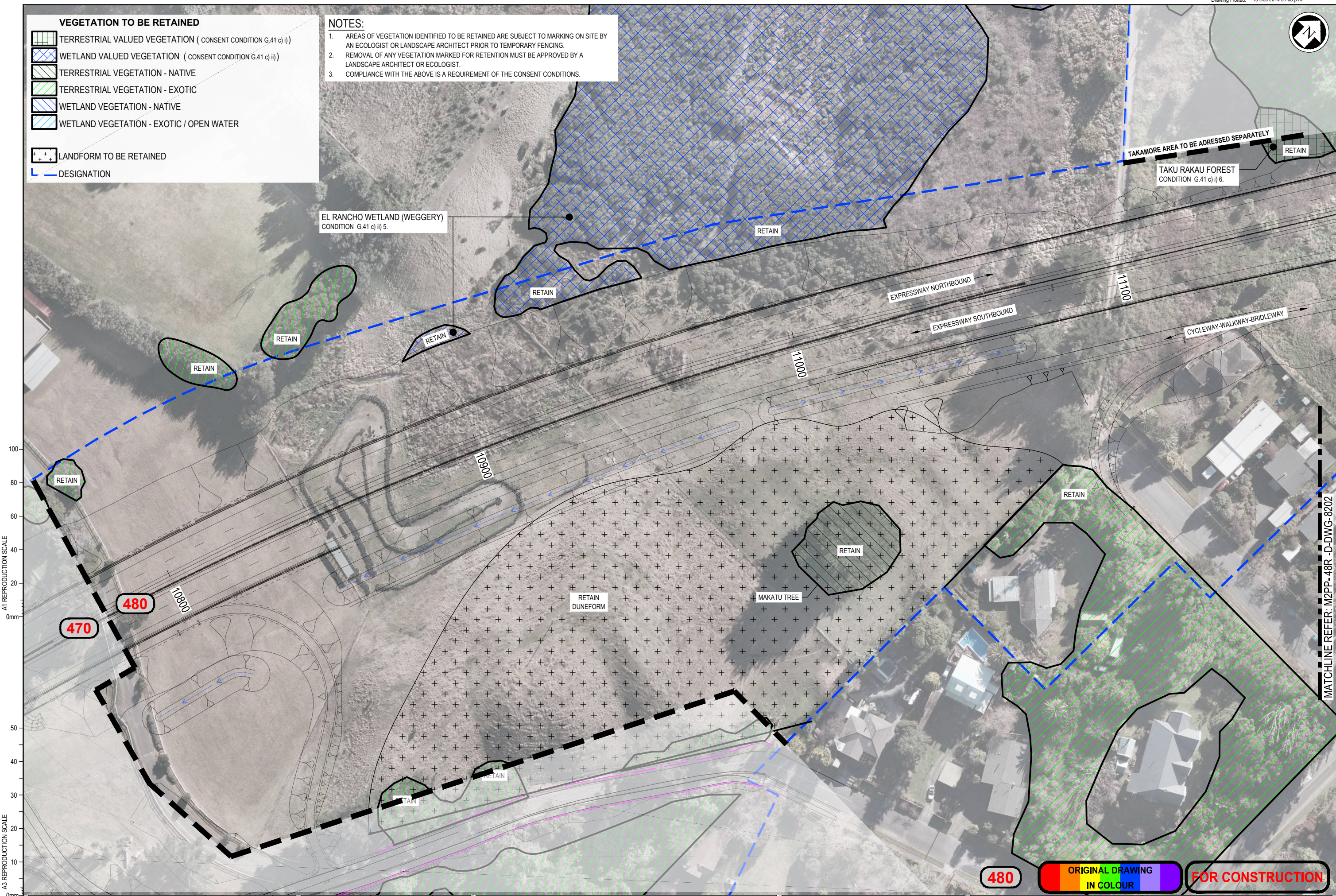
510 ORIGINAL DRAWING IN COLOUR FOR CONSTRUCTION

**VEGETATION TO BE RETAINED**

- TERRESTRIAL VALUED VEGETATION ( CONSENT CONDITION G.41 c) i)
- WETLAND VALUED VEGETATION ( CONSENT CONDITION G.41 c) ii)
- TERRESTRIAL VEGETATION - NATIVE
- TERRESTRIAL VEGETATION - EXOTIC
- WETLAND VEGETATION - NATIVE
- WETLAND VEGETATION - EXOTIC / OPEN WATER
- LANDFORM TO BE RETAINED
- DESIGNATION

**NOTES:**

1. AREAS OF VEGETATION IDENTIFIED TO BE RETAINED ARE SUBJECT TO MARKING ON SITE BY AN ECOLOGIST OR LANDSCAPE ARCHITECT PRIOR TO TEMPORARY FENCING.
2. REMOVAL OF ANY VEGETATION MARKED FOR RETENTION MUST BE APPROVED BY A LANDSCAPE ARCHITECT OR ECOLOGIST.
3. COMPLIANCE WITH THE ABOVE IS A REQUIREMENT OF THE CONSENT CONDITIONS.



A1 REPRODUCTION SCALE  
0mm 20 40 60 80 100

A3 REPRODUCTION SCALE  
0mm 10 20 30 40 50

MATCHLINE REFER: M2PP-48R-D-DWG-8202

**480** ORIGINAL DRAWING IN COLOUR **FOR CONSTRUCTION**

No.	Revision	By	Chk	Chk-V	Appd	Date
3	FOR CONSTRUCTION - DRAWING POSITION ALTERED	MP				
2	FOR CONSTRUCTION - KCDC CERTIFICATION	MP	GFB	BF	PB	01.07.14
1	FOR CONSTRUCTION - WEED CLEARANCE	MP	GFB	DH	DC	17.03.14

Original Scale (A1)	Design	Drawn	Checked	Approved For Construction
1:500	F. BAGGLEY	M. POWELL	31.01.14	P. BRADSHAW
Reduced Scale (A3)		B. FAULKNER	17.03.14	
1:1000		G. F-B	17.03.14	Date 19.03.14

\* Refer to Revision 1 for Original Signature



**MacKays to Peka Peka**  
Wellington Northern Corridor

Project: SH1 MACKAYS TO PEKA PEKA EXPRESSWAY  
RP 1012/0.00 TO 1023/5.00

Title: SECTOR 480 EXPRESSWAY VEGETATION TO BE RETAINED SHEET 1

Drawing No: M2PP-48R-D-DWG-8701  
Rev: 2+



MATCHLINE REFER: M2PP- 51R -D-DWG-8701

TAKAMORE AREA TO BE ADDRESSED SEPARATELY

RETAIN

11200

11300

11400

1500

480

510

RETAIN

RETAIN

RETAIN

TAKU RAKAU FOREST  
CONDITION G.41 (c) 6.

RETAIN

RETAIN

RETAIN

RETAIN

RETAIN

RETAIN

MATCHLINE REFER: M2PP-48R -D-DWG-8701









MATCHLINE REFER: M2PP- 51R -D-DWG-8703

A1 REPRODUCTION SCALE

A3 REPRODUCTION SCALE

PURIRI ROAD

**VEGETATION TO BE RETAINED**

-  TERRESTRIAL VALUED VEGETATION ( CONSENT CONDITION G.41 (c) i )
-  WETLAND VALUED VEGETATION ( CONSENT CONDITION G.41 (c) ii )
-  TERRESTRIAL VEGETATION - NATIVE
-  TERRESTRIAL VEGETATION - EXOTIC
-  WETLAND VEGETATION - NATIVE
-  WETLAND VEGETATION - EXOTIC / OPEN WATER
-  LANDFORM TO BE RETAINED
-  DESIGNATION

**NOTES:**

1. AREAS OF VEGETATION IDENTIFIED TO BE RETAINED ARE SUBJECT TO MARKING ON SITE BY AN ECOLOGIST OR LANDSCAPE ARCHITECT PRIOR TO TEMPORARY FENCING.
2. REMOVAL OF ANY VEGETATION MARKED FOR RETENTION MUST BE APPROVED BY A LANDSCAPE ARCHITECT OR ECOLOGIST.
3. COMPLIANCE WITH THE ABOVE IS A REQUIREMENT OF THE CONSENT CONDITIONS.

480 510

ORIGINAL DRAWING  
IN COLOUR

FOR CONSTRUCTION

No.	Revision	By	Chk	Chk-V	Appd	Date
3	FOR CONSTRUCTION - DRAWING POSITION ALTERED	MP				
2	FOR CONSTRUCTION - KCDC CERTIFICATION	MP	GFB	BF	PB	01.07.14
1	FOR CONSTRUCTION - WEED CLEARANCE	MP	GFB	DH	DC	17.03.14

Original Scale (A1)	Design	Drawn	Drawn Date	Approved For Construction
1:500	F. BAGGLEY	M. POWELL	31.01.14	P. BRADSHAW
Reduced Scale (A3)	Design	Drawn	Drawn Date	Approved For Construction
1:1000	G. F. B.	G. F. B.	17.03.14	



**MacKays to Peka Peka**  
Wellington Northern Corridor

Project: SH1 MACKAYS TO PEKA PEKA EXPRESSWAY  
RP 1012/0.00 TO 1023/5.00

Title: SECTOR 480 EXPRESSWAY  
VEGETATION TO BE RETAINED  
SHEET 2

Document No: M2PP-48R-D-DWG-8702  
M2PP-48R-D-DWG-8702

Rev. 3



**VEGETATION TO BE RETAINED**

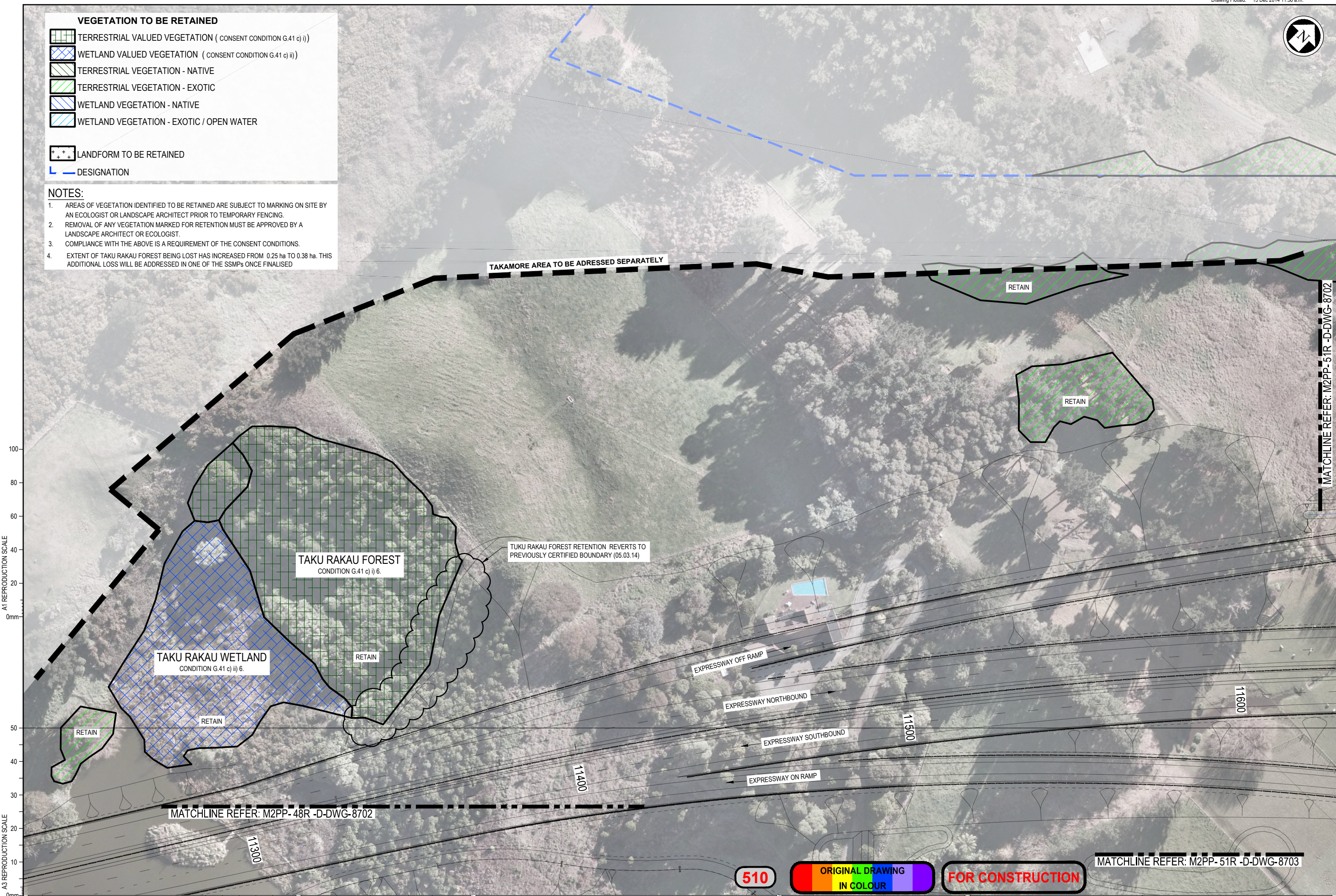
- TERRESTRIAL VALUED VEGETATION ( CONSENT CONDITION G.41 c) i)
- WETLAND VALUED VEGETATION ( CONSENT CONDITION G.41 c) ii)
- TERRESTRIAL VEGETATION - NATIVE
- TERRESTRIAL VEGETATION - EXOTIC
- WETLAND VEGETATION - NATIVE
- WETLAND VEGETATION - EXOTIC / OPEN WATER

LANDFORM TO BE RETAINED

DESIGNATION

**NOTES:**

1. AREAS OF VEGETATION IDENTIFIED TO BE RETAINED ARE SUBJECT TO MARKING ON SITE BY AN ECOLOGIST OR LANDSCAPE ARCHITECT PRIOR TO TEMPORARY FENCING.
2. REMOVAL OF ANY VEGETATION MARKED FOR RETENTION MUST BE APPROVED BY A LANDSCAPE ARCHITECT OR ECOLOGIST.
3. COMPLIANCE WITH THE ABOVE IS A REQUIREMENT OF THE CONSENT CONDITIONS.
4. EXTENT OF TAKU RAKAU FOREST BEING LOST HAS INCREASED FROM 0.25 ha TO 0.38 ha. THIS ADDITIONAL LOSS WILL BE ADDRESSED IN ONE OF THE SSMPs ONCE FINALISED



A1 REPRODUCTION SCALE  
0mm

A3 REPRODUCTION SCALE  
0mm

MATCHLINE REFER: M2PP-51R -D-DWG-8702

No.	Revision	By	Chk	Chk-V	Appd	Date
3	FOR CONSTRUCTION - REVISED AS NOTED	MP				
2	FOR CONSTRUCTION - REVISED AS NOTED	MP	GFB	BF	PB	01.07.14
1	FOR CONSTRUCTION	MP	GFB	DH	DC	07.03.14

Original Scale (A1)	Design	Drawn	Checked	Date	Approved For Construction
1:500	F. BAGGALEY	M. POWELL		31.01.14	P. BRADSHAW
Reduced Scale (A3)		B. FAULKNER		07.03.14	
1:1000		G. F-B		07.03.14	



**MacKays to Peka Peka**  
Wellington Northern Corridor

Project: SH1 MACKAYS TO PEKA PEKA EXPRESSWAY  
RP 1012/0.00 TO 1023/5.00

Title: TE MOANA RD INTERCHANGE VEGETATION TO BE RETAINED SHEET 1

Drawing No: M2PP-51R-D-DWG-8701

Rev: 3

510

ORIGINAL DRAWING  
IN COLOUR

FOR CONSTRUCTION



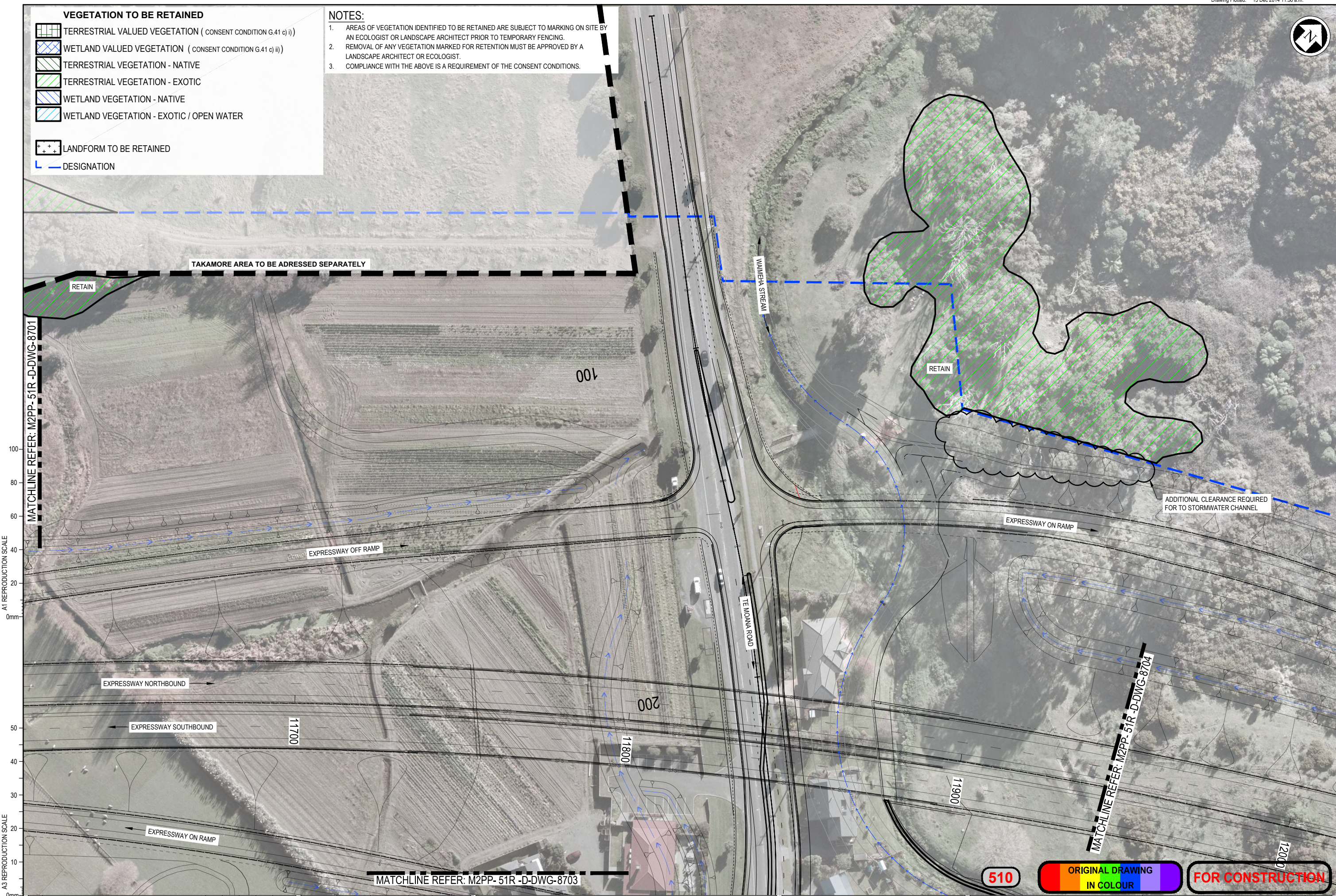


**VEGETATION TO BE RETAINED**

- TERRESTRIAL VALUED VEGETATION ( CONSENT CONDITION G.41 c) i)
- WETLAND VALUED VEGETATION ( CONSENT CONDITION G.41 c) ii)
- TERRESTRIAL VEGETATION - NATIVE
- TERRESTRIAL VEGETATION - EXOTIC
- WETLAND VEGETATION - NATIVE
- WETLAND VEGETATION - EXOTIC / OPEN WATER
- LANDFORM TO BE RETAINED
- DESIGNATION

**NOTES:**

1. AREAS OF VEGETATION IDENTIFIED TO BE RETAINED ARE SUBJECT TO MARKING ON SITE BY AN ECOLOGIST OR LANDSCAPE ARCHITECT PRIOR TO TEMPORARY FENCING.
2. REMOVAL OF ANY VEGETATION MARKED FOR RETENTION MUST BE APPROVED BY A LANDSCAPE ARCHITECT OR ECOLOGIST.
3. COMPLIANCE WITH THE ABOVE IS A REQUIREMENT OF THE CONSENT CONDITIONS.



A1 REPRODUCTION SCALE  
0mm 20 40 60 80 100

A3 REPRODUCTION SCALE  
0mm 10 20 30 40 50

No.	Revision	By	Chk	Chk-V	Appd	Date
2	FOR CONSTRUCTION - REVISED AS NOTED	MP				
1	FOR CONSTRUCTION	MP	GFB	DH	DC	07.03.14

Original Scale (A1)	Design	Drawn	Checked	Date	Approved For Construction
1:500	F BAGALLEY	M POWELL		31.01.14	P BRADSHAW
Reduced Scale (A3)					
1:1000					



**MacKays to Peka Peka**  
Wellington Northern Corridor

Project: SH1 MACKAYS TO PEKA PEKA EXPRESSWAY  
RP 1012/0.00 TO 1023/5.00

Title: TE MOANA RD INTERCHANGE VEGETATION TO BE RETAINED  
SHEET 2

Drawing No: M2PP-51R-D-DWG-8702  
Rev: 2

510

ORIGINAL DRAWING  
IN COLOUR

FOR CONSTRUCTION

MATCHLINE REFER: M2PP-51R-D-DWG-8702

MATCHLINE REFER: M2PP-51R-D-DWG-8701

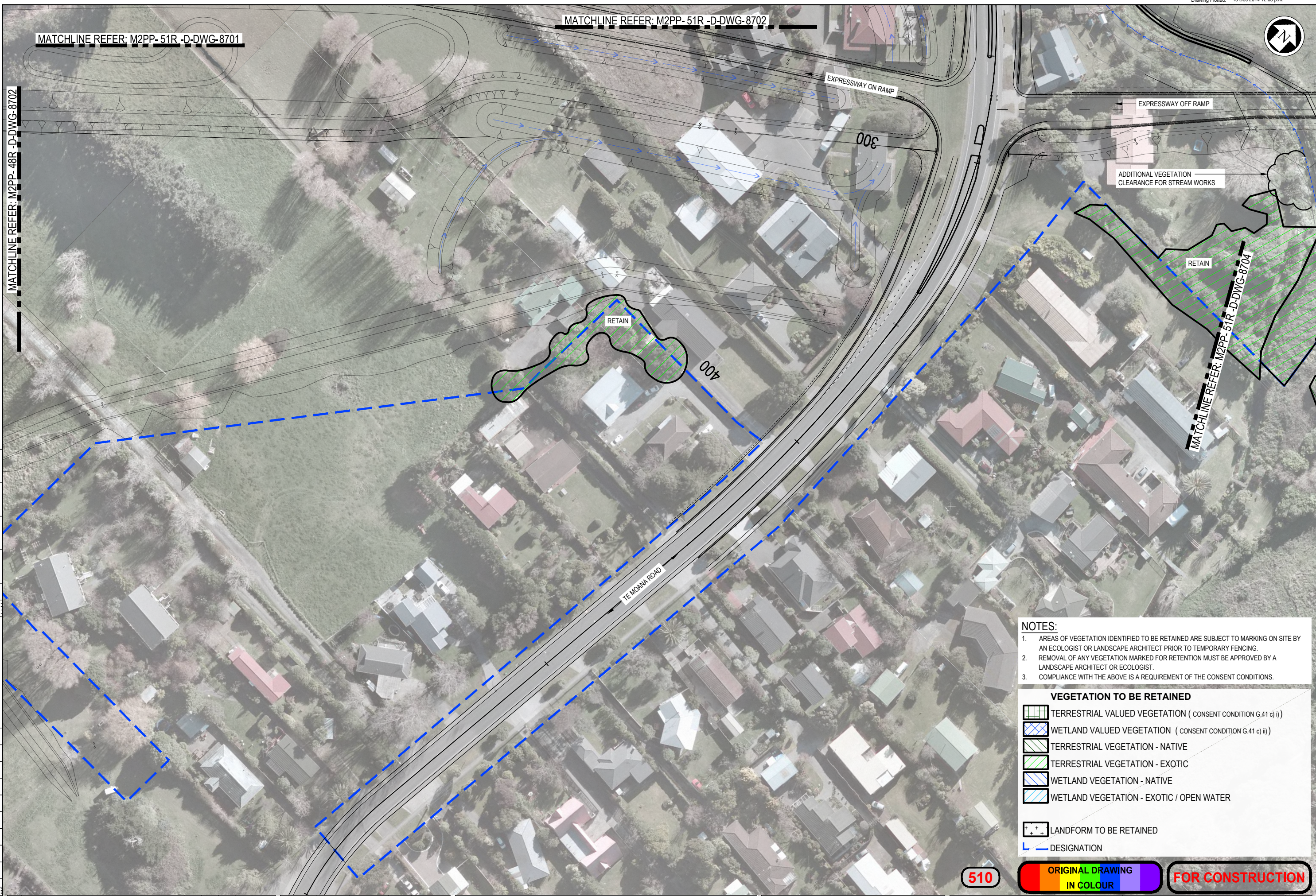
MATCHLINE REFER: M2PP-48R-D-DWG-8702

MATCHLINE REFER: M2PP-51R-D-DWG-8704

A1 REPRODUCTION SCALE

A3 REPRODUCTION SCALE

0mm  
20  
40  
60  
80  
100



- NOTES:**
1. AREAS OF VEGETATION IDENTIFIED TO BE RETAINED ARE SUBJECT TO MARKING ON SITE BY AN ECOLOGIST OR LANDSCAPE ARCHITECT PRIOR TO TEMPORARY FENCING.
  2. REMOVAL OF ANY VEGETATION MARKED FOR RETENTION MUST BE APPROVED BY A LANDSCAPE ARCHITECT OR ECOLOGIST.
  3. COMPLIANCE WITH THE ABOVE IS A REQUIREMENT OF THE CONSENT CONDITIONS.

**VEGETATION TO BE RETAINED**

	TERRESTRIAL VALUED VEGETATION ( CONSENT CONDITION G.41 c) i)
	WETLAND VALUED VEGETATION ( CONSENT CONDITION G.41 c) ii)
	TERRESTRIAL VEGETATION - NATIVE
	TERRESTRIAL VEGETATION - EXOTIC
	WETLAND VEGETATION - NATIVE
	WETLAND VEGETATION - EXOTIC / OPEN WATER
	LANDFORM TO BE RETAINED
	DESIGNATION

510

ORIGINAL DRAWING  
IN COLOUR

FOR CONSTRUCTION

No.	Revision	By	Chk	Chk-V	Appd	Date
2	FOR CONSTRUCTION - REVISED AS NOTED	MP				
1	FOR CONSTRUCTION	MP	GFB	DH	DC	07.03.14

Original Scale (A1)	Design	Drawn	Date	Approved For Construction
1:500	F BAGGALEY	M POWELL	31.01.14	P BRADSHAW
Reduced Scale (A3)	Dwg Verifier	Dwg Check	Date	
1:1000	B FAULKNER	G F-B	07.03.14	

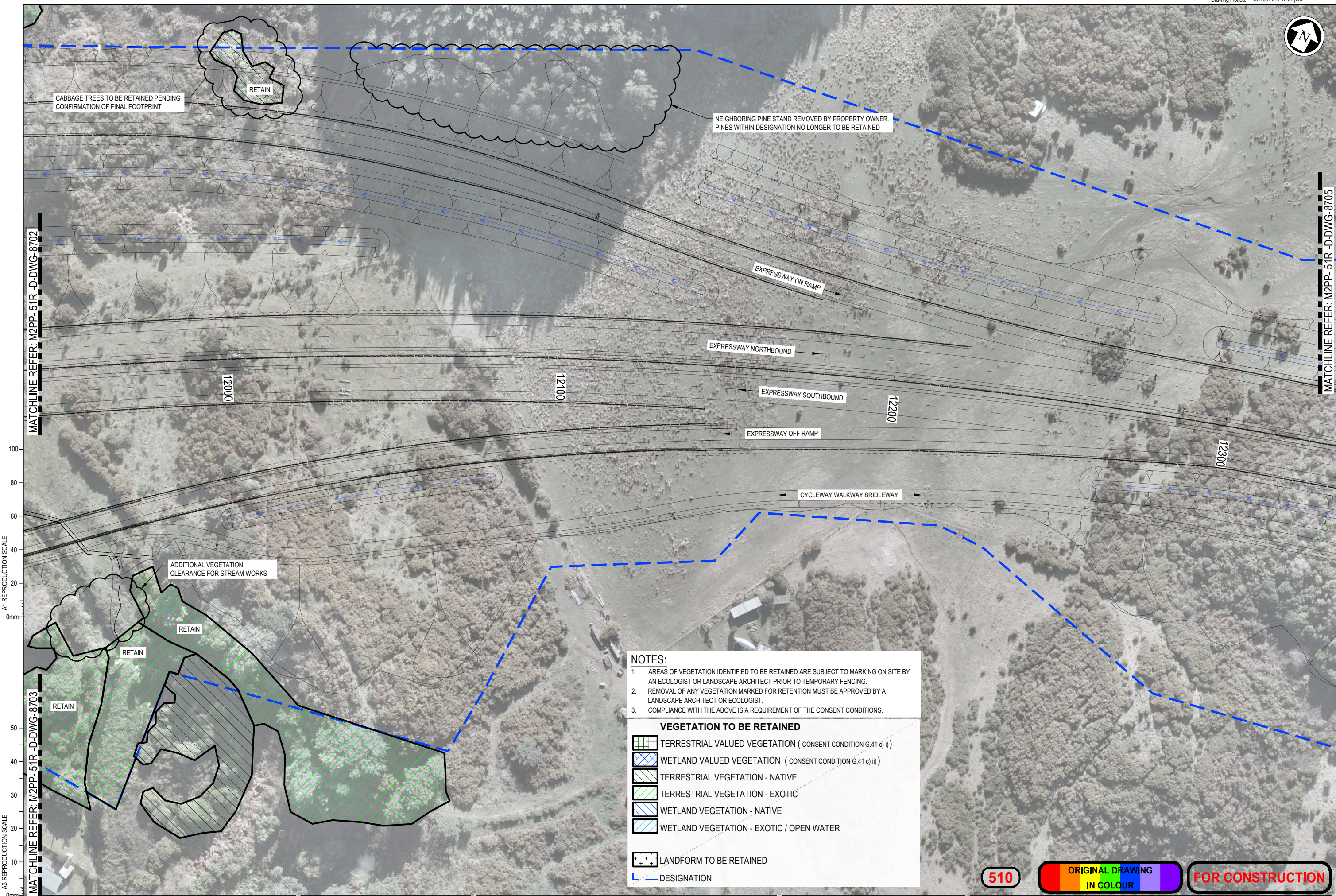


**MacKays to Peka Peka**  
Wellington Northern Corridor

Project: SH1 MACKAYS TO PEKA PEKA EXPRESSWAY  
RP 1012/0.00 TO 1023/5.00

Title: TE MOANA RD INTERCHANGE  
VEGETATION TO BE RETAINED  
SHEET 3

Drawing No: M2PP-51R-D-DWG-8703  
Rev: 2



CABBAGE TREES TO BE RETAINED PENDING CONFIRMATION OF FINAL FOOTPRINT

RETAIN

NEIGHBORING PINE STAND REMOVED BY PROPERTY OWNER. PINES WITHIN DESIGNATION NO LONGER TO BE RETAINED

EXPRESSWAY ON RAMP

EXPRESSWAY NORTHBOUND

EXPRESSWAY SOUTHBOUND

EXPRESSWAY OFF RAMP

CYCLEWAY WALKWAY BRIDLEWAY

ADDITIONAL VEGETATION CLEARANCE FOR STREAM WORKS

RETAIN

RETAIN

RETAIN

**NOTES:**  
 1. AREAS OF VEGETATION IDENTIFIED TO BE RETAINED ARE SUBJECT TO MARKING ON SITE BY AN ECOLOGIST OR LANDSCAPE ARCHITECT PRIOR TO TEMPORARY FENCING.  
 2. REMOVAL OF ANY VEGETATION MARKED FOR RETENTION MUST BE APPROVED BY A LANDSCAPE ARCHITECT OR ECOLOGIST.  
 3. COMPLIANCE WITH THE ABOVE IS A REQUIREMENT OF THE CONSENT CONDITIONS.

**VEGETATION TO BE RETAINED**

- TERRESTRIAL VALUED VEGETATION ( CONSENT CONDITION G.41 c) i)
- WETLAND VALUED VEGETATION ( CONSENT CONDITION G.41 c) ii)
- TERRESTRIAL VEGETATION - NATIVE
- TERRESTRIAL VEGETATION - EXOTIC
- WETLAND VEGETATION - NATIVE
- WETLAND VEGETATION - EXOTIC / OPEN WATER

LANDFORM TO BE RETAINED

DESIGNATION

510

ORIGINAL DRAWING  
IN COLOUR

FOR CONSTRUCTION

No.	Revision	By	Chk	Chk-V	Appd	Date
2	FO CONSTRUCTION - REVISED AS NOTED	MP				
1	FOR CONSTRUCTION	MP	GFB	DH	DC	07.03.14

Original Scale (A1)	Design	Drawn	Design	Date	Approved For Construction
1:500	S DUNN	M POWELL	S DUNN	31.01.14	P BRADSHAW
Reduced Scale (A3)		Dwg Verifier	B FAULKNER	07.03.14	
1:1000		Dwg Check	G F-B	07.03.14	Date 07.03.14



**MacKays to Peka Peka**  
Wellington Northern Corridor

Project: SH1 MACKAYS TO PEKA PEKA EXPRESSWAY  
RP 1012/0.00 TO 1023/5.00

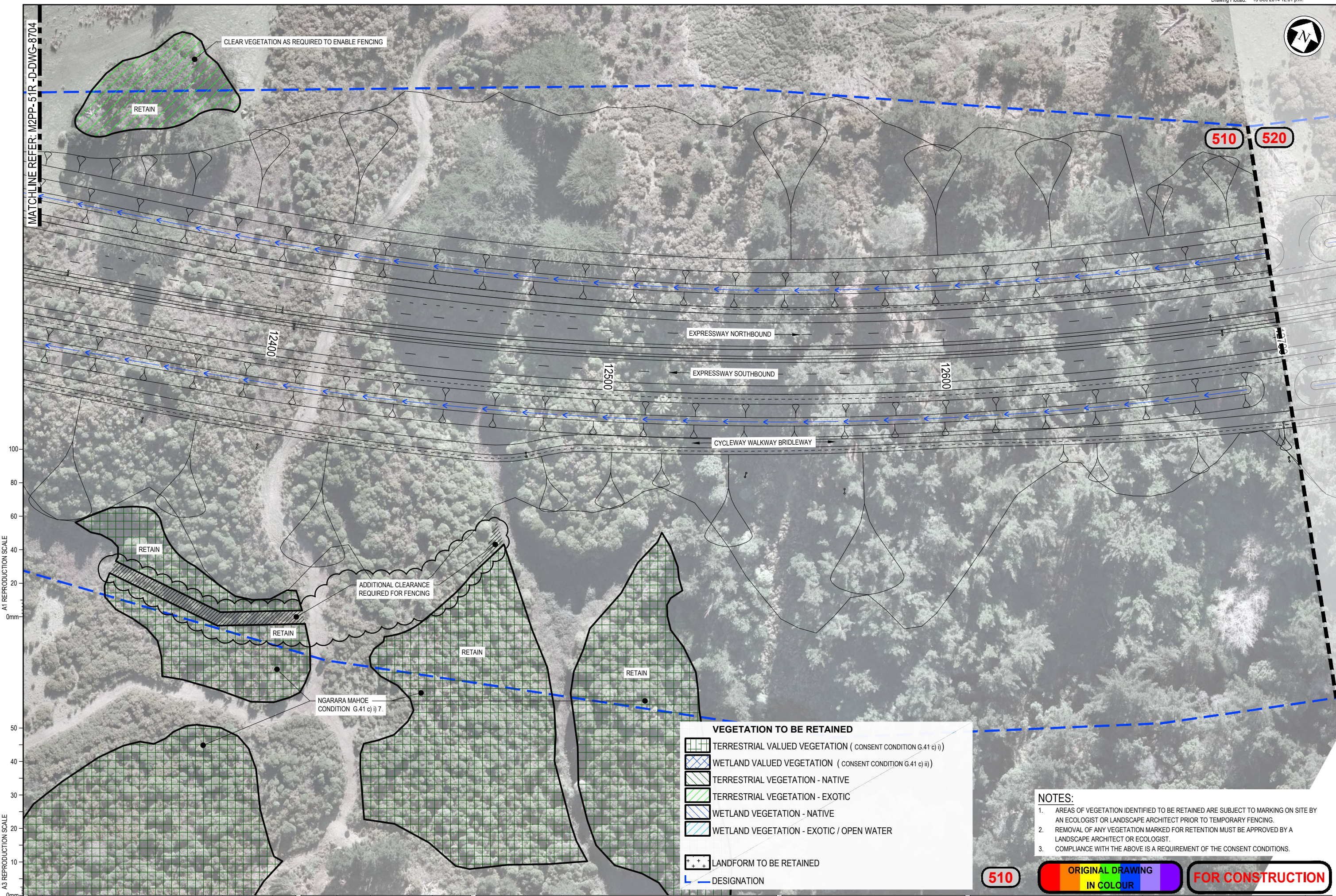
Title: TE MOANA RD INTERCHANGE VEGETATION TO BE RETAINED SHEET 4

Document No: M2PP-51R-D-DWG-8704  
M2PP-51R-D-DWG-8704

Rev. 2



MATCHLINE REFER: M2PP-51R-D-DWG-8704



A1 REPRODUCTION SCALE  
0mm

A3 REPRODUCTION SCALE  
0mm

**VEGETATION TO BE RETAINED**

- TERRESTRIAL VALUED VEGETATION ( CONSENT CONDITION G.41 c) i)
- WETLAND VALUED VEGETATION ( CONSENT CONDITION G.41 c) ii)
- TERRESTRIAL VEGETATION - NATIVE
- TERRESTRIAL VEGETATION - EXOTIC
- WETLAND VEGETATION - NATIVE
- WETLAND VEGETATION - EXOTIC / OPEN WATER
- LANDFORM TO BE RETAINED
- DESIGNATION

- NOTES:**
1. AREAS OF VEGETATION IDENTIFIED TO BE RETAINED ARE SUBJECT TO MARKING ON SITE BY AN ECOLOGIST OR LANDSCAPE ARCHITECT PRIOR TO TEMPORARY FENCING.
  2. REMOVAL OF ANY VEGETATION MARKED FOR RETENTION MUST BE APPROVED BY A LANDSCAPE ARCHITECT OR ECOLOGIST.
  3. COMPLIANCE WITH THE ABOVE IS A REQUIREMENT OF THE CONSENT CONDITIONS.

510

ORIGINAL DRAWING

IN COLOUR

FOR CONSTRUCTION

No.	Revision	By	Chk	Chk-V	Appd	Date
4	FOR CONSTRUCTION - DRAWING POSITION ALTERED	MP				
3	FOR CONSTRUCTION	MP	BF	DH	DC	01.09.14
2	FOR KCDC CERTIFICATION - REVISED AS NOTED	MP	SD	DH	DC	27.08.14
1	FOR CONSTRUCTION	MP	GFB	DH	DC	07.03.14

Original Scale (A1)	Design	Drawn	Design Date	Approved For Construction
1:500	F. BAGGALEY	M. POWELL	14.01.14	P. BRADSHAW
Reduced Scale (A3)	Dwg Verifier	Dwg Check	Date	
1:1000	B. FAULKNER	G. F-B	07.03.14	

\* Refer to Revision 1 for Original Signature

MacKays to Peka Peka

Wellington Northern Corridor

Project: SH1 MACKAYS TO PEKA PEKA EXPRESSWAY  
RP 1012/0.00 TO 1023/5.00

Title: TE MOANA RD INTERCHANGE  
VEGETATION TO BE RETAINED  
SHEET 5

Drawing No: M2PP-51R-D-DWG-8705  
Rev: 4

PLAN REFERENCE	
TOTAL	
AREA	133139 m <sup>2</sup>
AREA ADJUSTED FOR SLOPE	139796 m <sup>2</sup>

MT MIX = 1.0M CRS MASSED PLANTING, ENRICHMENT 10.0M CRS, PLANT CENTRES (METRES)  
 MULCH TYPE OM = ORGANIC MULCH, GM = GRADED GRAVEL MULCH, BC = BIOCOIR  
 N = NO MULCH (IN RIPARIAN / WETLAND ZONES), WM = WOOL MAT SQUARE (RIPARIAN EROSION)

Plant type	Plant mix	Botanical name	Common name	Grade	% mix	Notes		
<b>MASSED LOW EDGE PLANTING, ADJACENT TO CYCLEWAY / FERNBIRD HABITAT</b>								
ML	A	Austroderia fulvida	syn Cortaderia, toetoe	1.0 litre	5%	back	394	no
ML	A	Carex lessoniana	Cutty grass	1.0 litre	10%	front edge	787	no
ML	A	Coprosma acerosa	Sand Coprosma	1.0 litre	10%	front edge	787	no
ML	A	Coprosma propinqua	Mingimingi	1.0 litre	5%	mid back	394	no
ML	A	Coprosma rhamnoides	Coprosma rhamnoides	1.0 litre	10%	mid back	787	no
ML	A	Cyperus ustulatus	Toetoe upokotangata, Giant umbrella sedge	1.0 litre	10%	front		
							787	no
ML	A	Ficinia nodosa	Wiwi, Knobby club rush	1.0 litre	5%	front edge	394	no
ML	A	Hebe stricta	Koromiko	1.0 litre	10%	mid back	787	no
ML	A	Leptospermum scoparium	Manuka	1.0 litre	15%	back	1181	no
ML	A	Melicope simplex	Melicope simplex	1.0 litre	5%	mid back	394	no
ML	A	Muehlenbeckia complexa	Pohuehue, wire vine	1.0 litre	15%	front edge	1181	no
<b>MASSED LOW EDGE PLANTING, ADJACENT TO EXPRESSWAY</b>								
ML	B	Acaena novae-zealandiae	Red bidibidi	1.0 litre	10%		1375	no
ML	B	Austroderia fulvida	syn Cortaderia, toetoe	1.0 litre	5%		687	no
ML	B	Carex dipsacea	Teasel sedge	1.0 litre	10%		1375	no
ML	B	Carex solandri	Forest sedge, Solander's sedge	1.0 litre	10%		1375	no
ML	B	Carex virgata	Swamp sedge	1.0 litre	5%		687	no
ML	B	Coprosma acerosa	Sand Coprosma	1.0 litre	10%		1375	no
ML	B	Coprosma areolata	Thin leaved Coprosma	1.0 litre	5%		687	no
ML	B	Coprosma propinqua	Mingimingi	1.0 litre	5%		687	no
ML	B	Coprosma repens	Taupata	1.0 litre	5%		687	no
ML	B	Ficinia nodosa	Wiwi, Knobby club rush	1.0 litre	10%		1375	no
ML	B	Hebe stricta	Koromiko	1.0 litre	5%		687	no
ML	B	Muehlenbeckia complexa	Pohuehue, wire vine	1.0 litre	20%		2750	no
<b>MASSED PLANTING - GENERAL MIX, MAHOE RICH WITH KOWHAI ENRICHMENT</b>								
MP	C	Carpodetus serratus	Putaputaweta	1.0 litre	5%		1206	no
MP	C	Coprosma propinqua	Mingimingi	1.0 litre	5%		1206	no
MP	C	Coprosma robusta	Karamu	1.0 litre	10%		2412	no
MP	C	Cordyline australis	Ti kouka	1.0 litre	5%		1206	no
MP	C	Griselinia lucida	Puka, Broadleaf	1.0 litre	2%		482	no
MP	C	Hebe stricta	Koromiko	1.0 litre	8%		1929	no
MP	C	Kunzea ericoides	Kanuka	1.0 litre	12%		2894	no
MP	C	Melicytus ramiflorus	Mahoe	1.0 litre	25%		6029	no
MP	C	Melicope ternata	Wharangi	1.0 litre	3%		723	no
MP	C	Macropiper excelsum	Kawakawa	1.0 litre	5%		1206	no
MP	C	Myoporum laetum	Ngaio	1.0 litre	3%		723	no
MP	C	Myrsine australis	Mapou, Matipo	1.0 litre	4%		965	no
MP	C	Pittosporum tenuifolium	Kohuhu	1.0 litre	8%		2059	no
MP	C	Pseudopanax arboreus	Whauwhaupaku, Fivefinger	1.0 litre	2%		482	no
MP	C	Sophora microphylla	Kowhai	1.0 litre	3%		593	no
<b>MASSED PLANTING - GENERAL MIX, MANUKA RICH, ADJOINS EL RANCHO / WEGGERY WETLAND</b>								
MP	D	Myrsine australis	Mapou, Matipo	1.0 litre	5%		186	no
MP	D	Phormium tenax	Harakeke, Flax	1.0 litre	5%		186	no
MP	D	Aristotelia serrata	Makomako	1.0 litre	10%		373	no
MP	D	Coprosma propinqua	Mingimingi	1.0 litre	5%		186	no
MP	D	Coprosma robusta	Karamu	1.0 litre	5%		186	no
MP	D	Cordyline australis	Ti kouka	1.0 litre	5%		186	no
MP	D	Hebe stricta	Koromiko	1.0 litre	5%		186	no
MP	D	Kunzea ericoides	Kanuka	1.0 litre	5%		186	no
MP	D	Leptospermum scoparium	Manuka	1.0 litre	25%		932	no
MP	D	Pittosporum eugenioides	Tarata, lemonwood	1.0 litre	10%		373	no
MP	D	Pseudopanax arboreus	Whauwhaupaku, Fivefinger	1.0 litre	5%		186	no
MP	D	Melicytus ramiflorus	Mahoe	1.0 litre	5%		186	no
MP	D	Hebe stricta	Koromiko	1.0 litre	5%		186	no
MP	D	Carex lessoniana	Cutty grass	1.0 litre	5%		186	no
<b>MASSED PLANTING - AMENITY AREA ADJOINING WAI MEHA STREAM</b>								
MP	P	Apodasmia similis	Oioi	0.5 litre	5%		69	no
MP	P	Austroderia fulvida	syn Cortaderia, toetoe	0.5 litre	20%		274	no
MP	P	Carex lessoniana	Cutty grass	0.5 litre	23%		316	no
MP	P	Cordyline australis	Ti kouka	1.0 litre	5%		69	no
MP	P	Macropiper excelsum	Kawakawa	1.0 litre	10%		137	no
MP	P	Melicope ternata	Wharangi	1.0 litre	10%		137	no
MP	P	Pittosporum eugenioides	Tarata, lemonwood	1.0 litre	10%		137	no
MP	P	Pseudopanax arboreus	Whauwhaupaku, Fivefinger	1.0 litre	10%		137	no
MP	P	Rhopalostylis sapida	Nikau	1.0 litre	7%		96	no
<b>AMENITY SPECIMEN TREES AT TE MOANA INTERCHANGE</b>								
TS	F	Magnolia grandiflora 'Little Gem'	Evergreen magnolia	Pb 40		speci	15	no
TS	G	Michelia doltsopa 'Silver Cloud'	Sweet Michelia	Pb 40		speci	3	no
TS	H	Magnolia 'Felix Jury'	Magnolia cambelli hybrid	Pb 40		speci	6	no
TS	I	Prunus yedoensis 'Awanui'	Flowering cherry	Pb 40		speci	32	no
TS	J	Agathis australis	Kauri	Pb 40		speci	13	no
<b>STREET TREE - TE MOANA ROAD</b>								
TS	K	Eucalyptus ficifolia	Flowering gum	Pb 40		speci	27	no
<b>WETLAND SPECIMEN TREE</b>								
TS	L	Dacrydium dacrydioides	Kahikatea	Pb 40		speci at waters edge	28	no
<b>SPECIMEN TREE - TE MOANA ROAD INTERCHANGE EMBANKMENTS</b>								
TS	M	Sophora microphylla	Kowhai	Pb40		speci	59	no

Plant type	Plant mix	Botanical name	Common name	Grade	% mix	Notes		
<b>MASSED PLANTING + TREE ENRICHMENT (PLANT SPECIES WITH * TOWARD BATTER TOPS TO ENCOURAGE FLIGHT OVER EXPRESSWAY)</b>								
MT	F	Austroderia fulvida	syn Cortaderia, toetoe	1.0 litre	2%		636	no
MT	F	Carpodetus serratus	Putaputaweta	1.0 litre	5%		787	no
MT	F	Coprosma grandifolia	Kanono	1.0 litre	4%		1273	no
MT	F	Coprosma propinqua	Mingimingi	1.0 litre	5%		1591	no
MT	F	Coprosma robusta	Karamu	1.0 litre	5%		1591	no
MT	F	Griselinia lucida	Puka, Broadleaf	1.0 litre	5%		1591	no
MT	F	Hebe stricta	Koromiko	1.0 litre	5%		1591	no
MT	F	Kunzea ericoides	Kanuka	1.0 litre	15%		4772	no
MT	F	Leptospermum scoparium	Manuka	1.0 litre	5%		1591	no
MT	F	Macropiper excelsum	Kawakawa	1.0 litre	5%		1591	no
MT	F	Melicope simplex	Melicope simplex	1.0 litre	5%		1591	no
MT	F	Melicope ternata	Wharangi	1.0 litre	2%		636	no
MT	F	Melicytus ramiflorus	Mahoe	1.0 litre	5%		1591	no
MT	F	Myoporum laetum	Ngaio	1.0 litre	2%		636	no
MT	F	Myrsine australis	Mapou, Matipo	1.0 litre	5%		1591	no
MT	F	Phormium tenax	Harakeke, Flax	1.0 litre	15%		4772	no
MT	F	Pittosporum eugenioides	Tarata, lemonwood	1.0 litre	3%		954	no
MT	F	Pseudopanax arboreus	Whauwhaupaku, Fivefinger	1.0 litre	5%		1591	no
MT	F	Pseudopanax crassifolius	Horoeke, lancewood	1.0 litre	2%		636	no
MT	F	Knightia excelsa *	Rewarewa	PB18	20%	enrich	636	no
MT	F	Podocarpus totara *	Totara	PB18	10%	enrich	318	no
MT	F	Prumnopitys taxifolia	Matatai	PB18	10%	enrich	318	no
MT	F	Rhopalostylis sapida	Nikau	PB18	5%	enrich	159	no
MT	F	Alectryon excelsus *	Titoki	PB18	20%	enrich	636	no
MT	F	Hedycarya arborea	Porokawhiri, Pigeonwood	PB18	10%	enrich	318	no
MT	F	Elaeocarpus dentatus	Hinau	PB18	5%	enrich	159	no
MT	F	Dysoxylum spectabile *	Kohekohe	PB18	20%	enrich	636	no
<b>MASSED SWALE PLANTING</b>								
MS	A	Apodasmia similis	Oioi	0.5 litre	100%		43070	no
<b>MASSED SWALE PLANTING - WITH WOODY PLANTS AT TOP EDGES</b>								
MS	B	Apodasmia similis	Oioi	0.5 litre	50%		2520	no
MS	B	Cordyline australis	Ti kouka	1.0 litre	10%		504	no
MS	B	Leptospermum scoparium	Manuka	1.0 litre	25%		1260	no
MS	B	Phormium tenax	Harakeke, Flax	0.5 litre	15%		756	no
<b>RIPARIAN PLANTING - WAI MEHA STREAM WITH ENRICHMENT, PLANT SPECIES MARKED * CLOSE TO STREAM EDGE OF CANOPY OVERHANG</b>								
RP	K	Aristotelia serrata *	Makomako	1.0 litre	10%	low veg edge	473	no
RP	K	Carex geminata	Cutty grass	0.5 litre	5%	45%	405	no
RP	K	Carex lessoniana	Cutty grass	0.5 litre	5%	30%	349	no
RP	K	Coprosma lucida	Shining karamu	1.0 litre	10%		473	no
RP	K	Coprosma robusta	Karamu	1.0 litre	10%		473	no
RP	K	Cordyline australis	Ti kouka	1.0 litre	5%		237	no
RP	K	Leptospermum scoparium *	Manuka	1.0 litre	20%		947	no
RP	K	Melicytus ramiflorus *	Mahoe	1.0 litre	10%		473	no
RP	K	Pittosporum eugenioides *	Tarata, lemonwood	1.0 litre	10%		473	no
RP	K	Pittosporum tenuifolium *	Kohuhu	1.0 litre	10%		473	no
RP	K	Phormium tenax	Harakeke, Flax	0.5 litre	5%	25%	330	no
RP	K	Sophora microphylla *	Kowhai	PB18	enrich		473	no
<b>WETLAND PLANTING - SLOPING BANK TO PERMANENT WATER, OCC INUNDATION ON EXTREME EVENTS</b>								
WP	D	Carex secta	Pukio, Purei	0.5 litre	65%	waters edge	2452	no
WP	D	Cyperus ustulatus	Toetoe upokotangata, Giant umbrella sedge	0.5 litre	17%	waters edge	641	no
WP	D	Dacrydium dacrydioides	Kahikatea	1.0 litre	1%		38	no
WP	D	Laurelia novae-zealandiae	Pukatea	1.0 litre	2%		75	no
WP	D	Phormium tenax	Harakeke, Flax	0.5 litre	10%		377	no
WP	D	Cordyline australis	Ti kouka	1.0 litre	5%		189	no
<b>WETLAND PLANTING - EMERGENT 0.0 TO 0.3M WATER DEPTH</b>								
WP	F	Carex secta	Pukio, Purei	0.5 litre	10%		600	no
WP	F	Carex virgata	Swamp sedge	0.5 litre	25%		1500	no
WP	F	Cyperus ustulatus	Toetoe upokotangata, Giant umbrella sedge	0.5 litre	25%		1500	no
WP	F	Machaerina rubiginosa (syn Baumea)		0.5 litre	15%		900	no
WP	F	Machaerina teretifolia (syn Baumea)	Common twig rush, pakihī sedge	0.5 litre	15%		900	no
WP	F	Phormium tenax	Harakeke, Flax	0.5 litre	10%		600	no
<b>WETLAND PLANTING - 0.3 TO 0.6M WATER DEPTH</b>								
WP	G	Bolboschoenus fluviatilis	Kukuraho, Marsh club rush	0.5 litre	30%		205	no
WP	G	Carex secta	Pukio, Purei	0.5 litre	10%		68	no
WP	G	Eleocharis acuta	Sharp spiked sedge	0.5 litre	25%		170	no
WP	G	Juncus edgariae (syn J gregifolius)	Wiwi	0.5 litre	35%		239	no
<b>GRASS</b>								
GL	A	Grass low grow mix	sown, close mow to 100mm	sow			9215	m <sup>2</sup>
GR	A	Grass rank - (low grow mix)	sown, allowed to grow rank,	sow			8408	m <sup>2</sup>
<b>TOTAL</b>								

A3 REPRODUCTION SCALE  
0mm  
20  
40  
60  
80  
100

**FOR CONSTRUCTION**

No.	Revision
1	FOR CONSTRUCTION

Original Scale (A1)	Design	F BAGGLEY	30.09.14	Approved For Construction
Reduced Scale (A3)	Drawn	M POWELL	30.09.14	D STIRRA
NTS	Design Checker	B EVANS	10.03.1	