

M2PP-121-D-PLNM-0008

Appendix 1: DRAWING SET

Site Specific Management Plan 008 - [sectors 480/510]  
MacKays to Peka Peka Expressway

31 MARCH 2015 - REV C - CERTIFIED ISSUE



SSMP#	SECTOR	NAME	NOTES
SSMP1	320	[RAUMATI SOUTH]	
SSMP2	330/340/350	[RAUMATI NORTH]	
SSMP3	360/370/380	[WHAREMAUKU BASIN]	
SSMP4	410/420	[KAPITI MAZENGARB]	
SSMP5&6	430/440/460	[OTAIHANGA NORTH&SOUTH]	
SSMP7	470	[WAIKANA E RIVER]	
SSMP8	480/510	[TE MOANA]	
SSMP9	520	[NGARARA]	
SSMP10	530/540/550/580	PEKA PEKA SOUTH	ISSUED IN TWO PARTS: -SSMP10-550 -SSMP10-580/540/530
SSMP11	560/570	[[PEKA PEKA NORTH]	



LEGEND	
	ROAD
	SSMP SHEET (ROAD)
	SSMP SHEET (BRIDGE)
	SSMP BOUNDARY
	CURRENT SSMP SHEET (ROAD)
	CURRENT SSMP SHEET (BRIDGE)
	PARCEL BOUNDARIES
	CONSTRUCTION BOUNDARY

A1 REPRODUCTION SCALE

A3 REPRODUCTION SCALE

No.	Revision	By	Chk	Chk-V	Appd	Date
C	CERTIFIED ISSUE	MP				31/03/15
B	FOR CERTIFICATION	MP				03/03/15
A	PRELIMINARY ISSUE TO KCDC	VB				

Original Scale (A1)	Design	Drawn	Drawn	10/12/14	Approved For Construction*
1:25,000	VB				
Revised Scale (A3)	1:50,000				

Project: SH1 MACKAYS TO PEKA PEKA EXPRESSWAY  
RP 1012/0.00 TO 1023/5.00

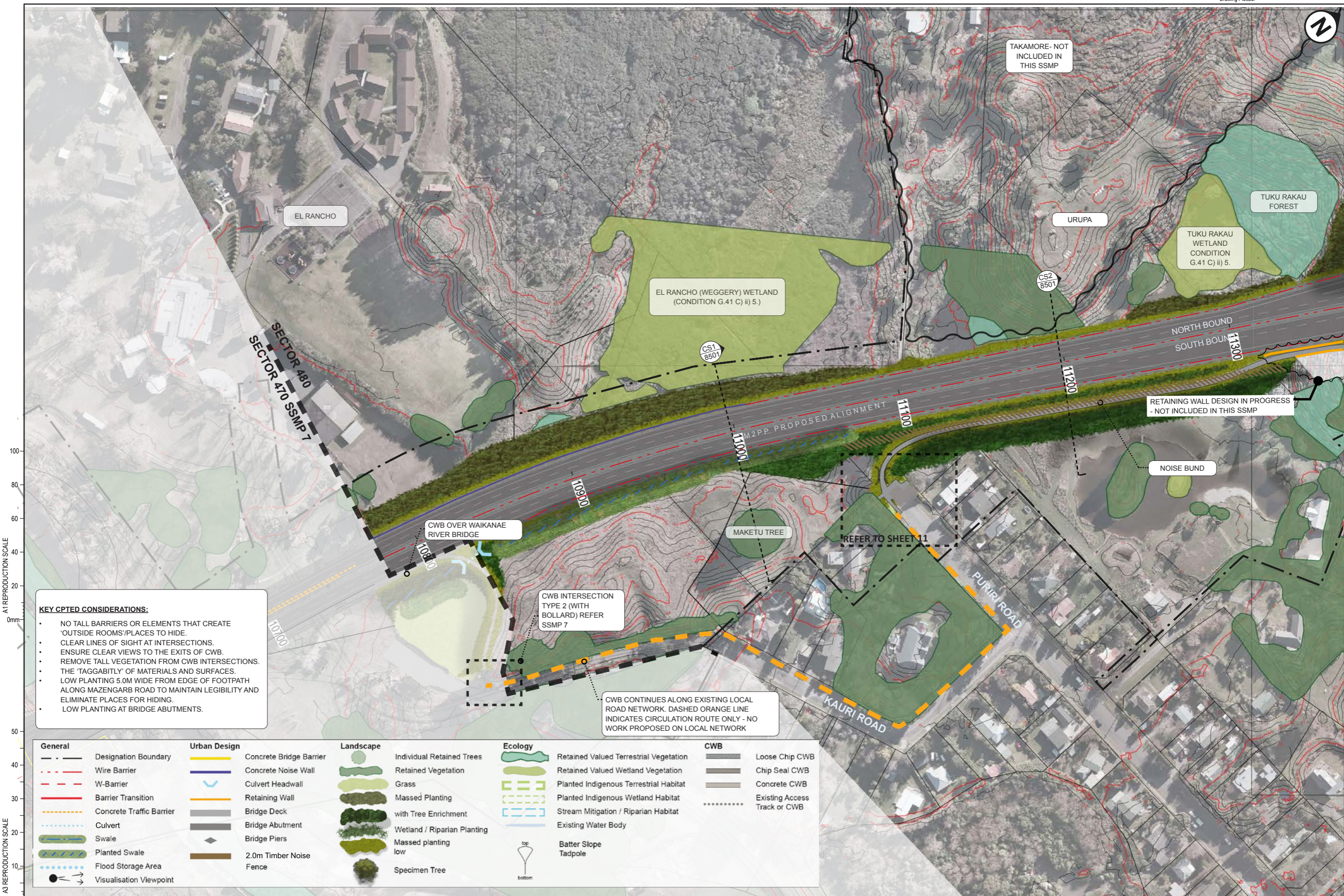
Title: SSMP 8 [480-510] - SHEET 1  
LOCATION PLAN

Drawing No: M2PP-121-D-DWG-8001

Rev. C

DETAIL DESIGN (DET)





A1 REPRODUCTION SCALE

A3 REPRODUCTION SCALE

- KEY CPTED CONSIDERATIONS:**
- NO TALL BARRIERS OR ELEMENTS THAT CREATE 'OUTSIDE ROOMS'/PLACES TO HIDE.
  - CLEAR LINES OF SIGHT AT INTERSECTIONS.
  - ENSURE CLEAR VIEWS TO THE EXITS OF CWB.
  - REMOVE TALL VEGETATION FROM CWB INTERSECTIONS.
  - THE 'TAGGABILITY' OF MATERIALS AND SURFACES.
  - LOW PLANTING 5.0M WIDE FROM EDGE OF FOOTPATH ALONG MAZENGARB ROAD TO MAINTAIN LEGIBILITY AND ELIMINATE PLACES FOR HIDING.
  - LOW PLANTING AT BRIDGE ABUTMENTS.

General		Urban Design		Landscape		Ecology		CWB	
	Designation Boundary		Concrete Bridge Barrier		Individual Retained Trees		Retained Valued Terrestrial Vegetation		Loose Chip CWB
	Wire Barrier		Concrete Noise Wall		Retained Vegetation		Retained Valued Wetland Vegetation		Chip Seal CWB
	W-Barrier		Culvert Headwall		Grass		Planted Indigenous Terrestrial Habitat		Concrete CWB
	Barrier Transition		Retaining Wall		Massed Planting		Planted Indigenous Wetland Habitat		Existing Access Track or CWB
	Concrete Traffic Barrier		Bridge Deck		with Tree Enrichment		Stream Mitigation / Riparian Habitat		
	Culvert		Bridge Abutment		Wetland / Riparian Planting		Existing Water Body		
	Swale		Bridge Piers		Massed planting low		Batter Slope Tadpole		
	Planted Swale		2.0m Timber Noise Fence		Specimen Tree				
	Flood Storage Area								
	Visualisation Viewpoint								

C	CERTIFIED ISSUE	MP			31/03/15
B	FOR CERTIFICATION	MP			03/03/15
A	PRELIMINARY ISSUE TO KCDC	VB			
No.	Revision	By	Chk	Chk-V	Appd

Original Scale (A1)	Design	Drawn	VB	10/12/14	Approved For Construction*
1:1000	Design	Drawn	VB	10/12/14	Date
Revised Scale (A3)	Design	Drawn	VB	10/12/14	Date
1:2000	Design	Drawn	VB	10/12/14	Date

**MacKays to Peka Peka**

Wellington Northern Corridor

Project: SH1 MACKAYS TO PEKA PEKA EXPRESSWAY  
RP 1012/0.00 TO 1023/5.00

Title: SSMP 8 [480-510] - SHEET 2  
MASTER PLAN

Drawing No: M2PP-121-D-DWG-8101

Rev: C

DETAIL DESIGN (DET)





TAKAMORE - NOT INCLUDED IN THIS SSMP

CULVERT 24.1 - 40M LONG

WATERCOURSE DIVERSION

WATERCOURSE DIVERSION

REF. SHEET 7

NORTHBOUND OFF RAMP

NORTHBOUND ON RAMP

M2PP PROPOSED ALIGNMENT

NORTH BOUND

SOUTH BOUND

SOUTHBOUND ON RAMP

REF. SHEET 8

SOUTHBOUND OFF RAMP

RETAINING WALL

RETAINING WALL DESIGN IN PROGRESS - NOT INCLUDED IN THIS SSMP

FLOODWAY

CWB

1M HIGH FLOOD PROTECTION BUND

CWB

TE MOANA ROAD

**KEY CPTED CONSIDERATIONS:**

- NO TALL BARRIERS OR ELEMENTS THAT CREATE 'OUTSIDE ROOMS'/PLACES TO HIDE.
- CLEAR LINES OF SIGHT AT INTERSECTIONS.
- ENSURE CLEAR VIEWS TO THE EXITS OF CWB.
- REMOVE TALL VEGETATION FROM CWB INTERSECTIONS.
- THE 'TAGGABILITY' OF MATERIALS AND SURFACES.
- LOW PLANTING 5.0M WIDE FROM EDGE OF FOOTPATH ALONG MAZENGARB ROAD TO MAINTAIN LEGIBILITY AND ELIMINATE PLACES FOR HIDING.
- LOW PLANTING AT BRIDGE ABUTMENTS.

**General**

- Designation Boundary
- - - Wire Barrier
- - - W-Barrier
- Barrier Transition
- - - Concrete Traffic Barrier
- Culvert
- Swale
- Planted Swale
- Flood Storage Area
- Visualisation Viewpoint

**Urban Design**

- Concrete Bridge Barrier
- Concrete Noise Wall
- Culvert Headwall
- Retaining Wall
- Bridge Deck
- Bridge Abutment
- Bridge Piers
- 2.0m Timber Noise Fence

**Landscape**

- Individual Retained Trees
- Retained Vegetation
- Grass
- Massed Planting with Tree Enrichment
- Wetland / Riparian Planting
- Massed planting low
- Specimen Tree

**Ecology**

- Retained Valued Terrestrial Vegetation
- Retained Valued Wetland Vegetation
- Planted Indigenous Terrestrial Habitat
- Planted Indigenous Wetland Habitat
- Stream Mitigation / Riparian Habitat
- Existing Water Body
- Batter Slope Tadpole

**CWB**

- Loose Chip CWB
- Chip Seal CWB
- Concrete CWB
- Existing Access Track or CWB
- Traffic Signal Poles

A1 REPRODUCTION SCALE

A3 REPRODUCTION SCALE

C	CERTIFIED ISSUE	MP		31/03/15	Original Scale (A1)	Design	VB	10/12/14	Approved For Construction
B	FOR CERTIFICATION	MP		03/03/15	1:10000	Drawn			
A	PRELIMINARY ISSUE TO KCDC	VB			Revised Scale (A3)	Design Verifier			
No.	Revision	By	Clk	Clk-V	1:2000	Dwg Check		Date	

Original Scale (A1)	Design	Approved For Construction
1:10000	VB	10/12/14
Revised Scale (A3)	Design Verifier	
1:2000	Dwg Check	



Project: SH1 MACKAYS TO PEKA PEKA EXPRESSWAY  
 RP 1012/0.00 TO 1023/5.00

Title: SSMP 8 [480-510] - SHEET 3  
 MASTER PLAN

Drawing No: M2PP-121-D-DWG-8102

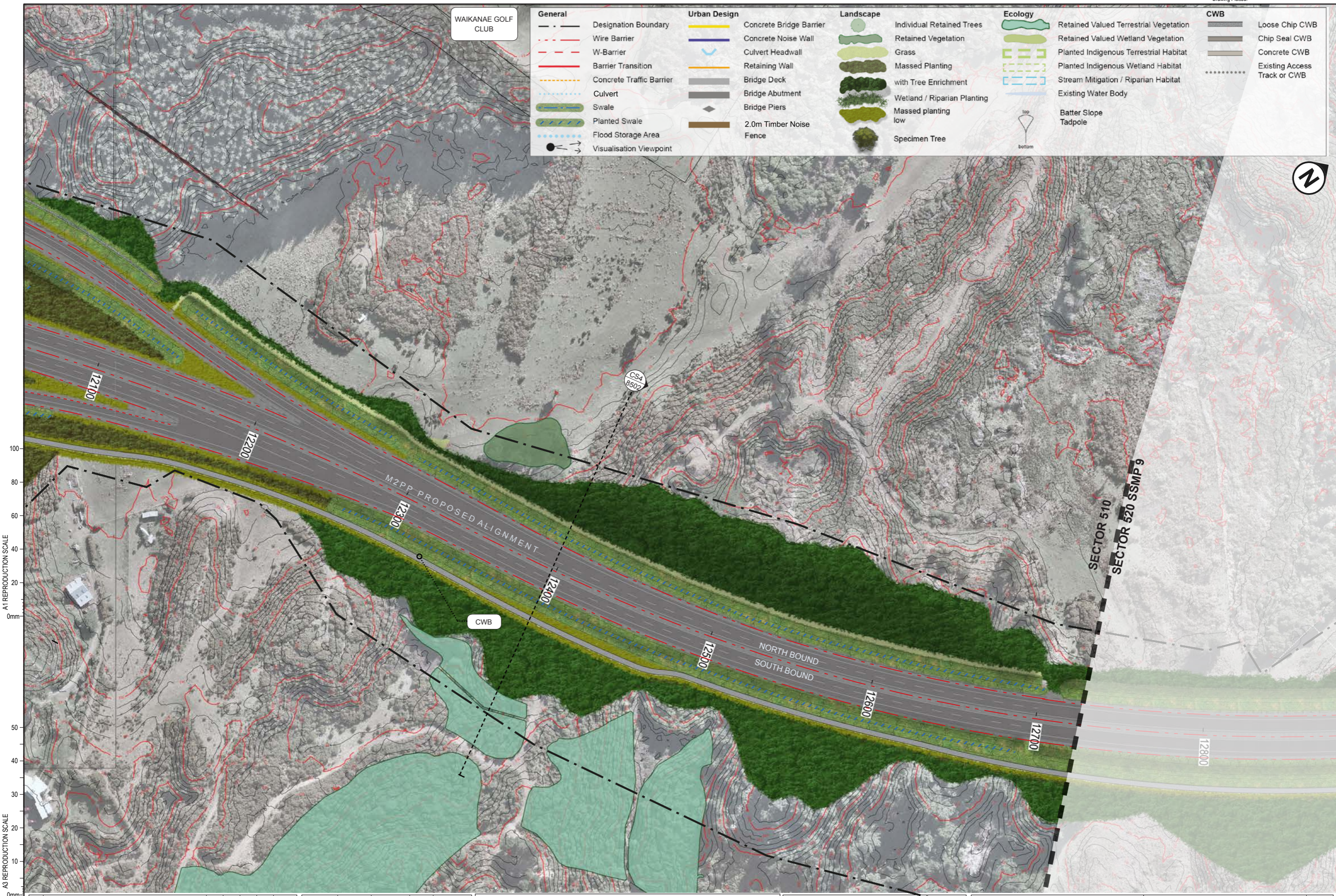
Rev: C

DETAIL DESIGN (DET)



WAIKANAE GOLF CLUB

General	Urban Design	Landscape	Ecology	CWB
<ul style="list-style-type: none"> <li>Designation Boundary</li> <li>Wire Barrier</li> <li>W-Barrier</li> <li>Barrier Transition</li> <li>Concrete Traffic Barrier</li> <li>Culvert</li> <li>Swale</li> <li>Planted Swale</li> <li>Flood Storage Area</li> <li>Visualisation Viewpoint</li> </ul>	<ul style="list-style-type: none"> <li>Concrete Bridge Barrier</li> <li>Concrete Noise Wall</li> <li>Culvert Headwall</li> <li>Retaining Wall</li> <li>Bridge Deck</li> <li>Bridge Abutment</li> <li>Bridge Piers</li> <li>2.0m Timber Noise Fence</li> </ul>	<ul style="list-style-type: none"> <li>Individual Retained Trees</li> <li>Retained Vegetation</li> <li>Grass</li> <li>Massed Planting</li> <li>with Tree Enrichment</li> <li>Wetland / Riparian Planting</li> <li>Massed planting low</li> <li>Specimen Tree</li> </ul>	<ul style="list-style-type: none"> <li>Retained Valued Terrestrial Vegetation</li> <li>Retained Valued Wetland Vegetation</li> <li>Planted Indigenous Terrestrial Habitat</li> <li>Planted Indigenous Wetland Habitat</li> <li>Stream Mitigation / Riparian Habitat</li> <li>Existing Water Body</li> <li>Batter Slope</li> <li>Tadpole</li> </ul>	<ul style="list-style-type: none"> <li>Loose Chip CWB</li> <li>Chip Seal CWB</li> <li>Concrete CWB</li> <li>Existing Access Track or CWB</li> </ul>



A1 REPRODUCTION SCALE

A3 REPRODUCTION SCALE



DETAIL DESIGN (DET)

C	CERTIFIED ISSUE	MP			31/03/15
B	FOR CERTIFICATION	MP			03/03/15
A	PRELIMINARY ISSUE TO KCDC	VB			
No.	Revision	By	Chk	Chk-V	Appd Date

Original Scale (A1)	Design Drawn	Approved For Construction*
1:10000	VB	10/12/14
Revised Scale (A3)	Design Verifier	Date
1:2000	Dwg Check	



**MacKays to Peka Peka**  
Wellington Northern Corridor

Project: SH1 MACKAYS TO PEKA PEKA EXPRESSWAY  
RP 1012/0.00 TO 1023/5.00

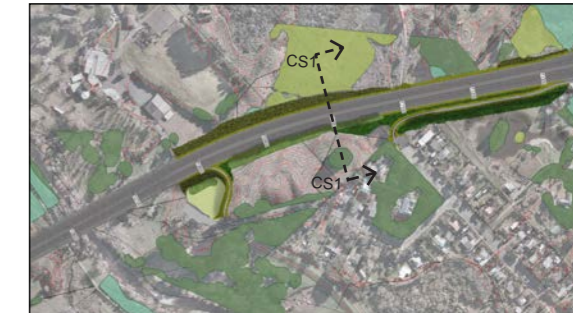
Title: SSMP 8 [480-510] - SHEET 4  
MASTER PLAN

Drawing No: M2PP-121-D-DWG-8103

Rev. C

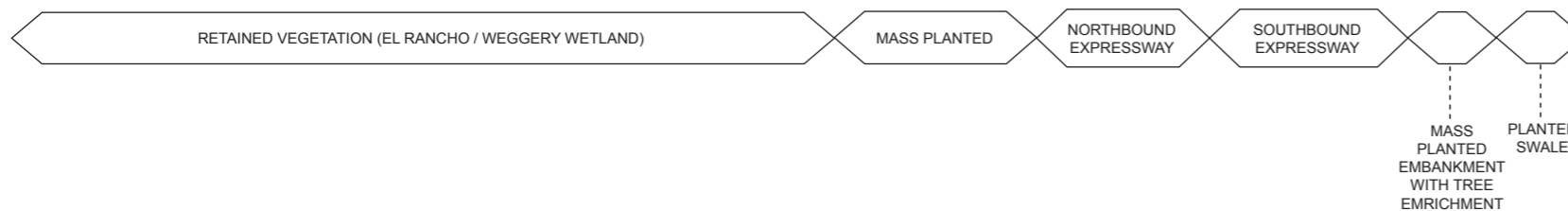
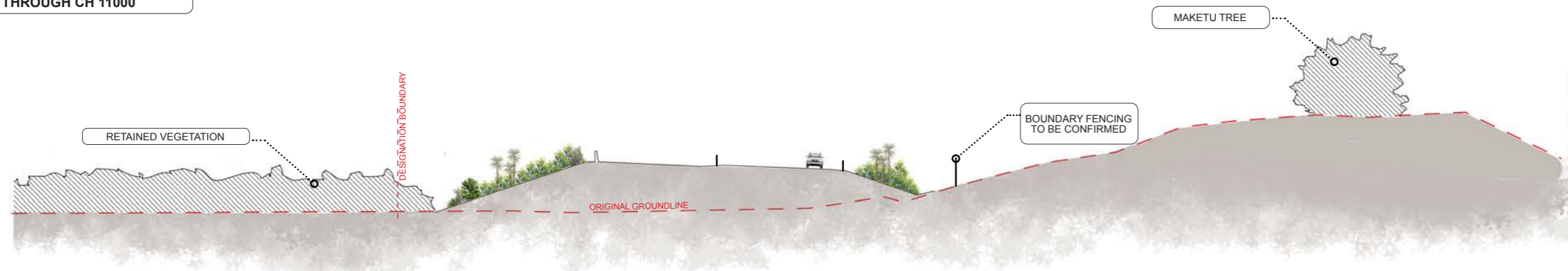


SITE CONTEXT PLAN-M2PP-121-D-GPH-8101



**CS1 - CROSS SECTION THROUGH CH 11000**

SCALE - 1:250@A1 - 1:500@A3 FACING NORTH

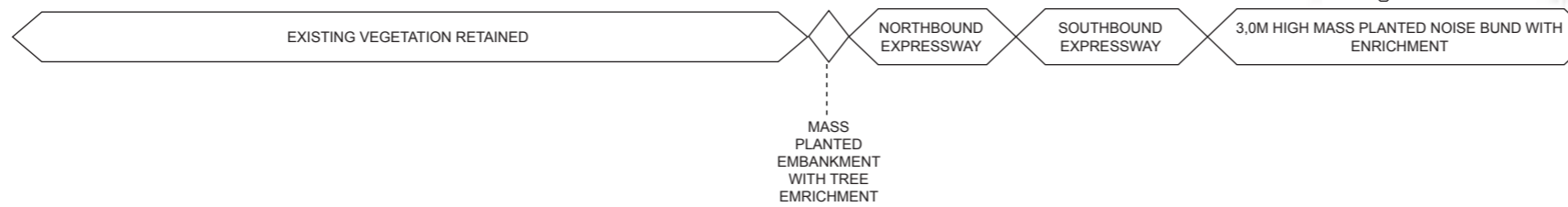
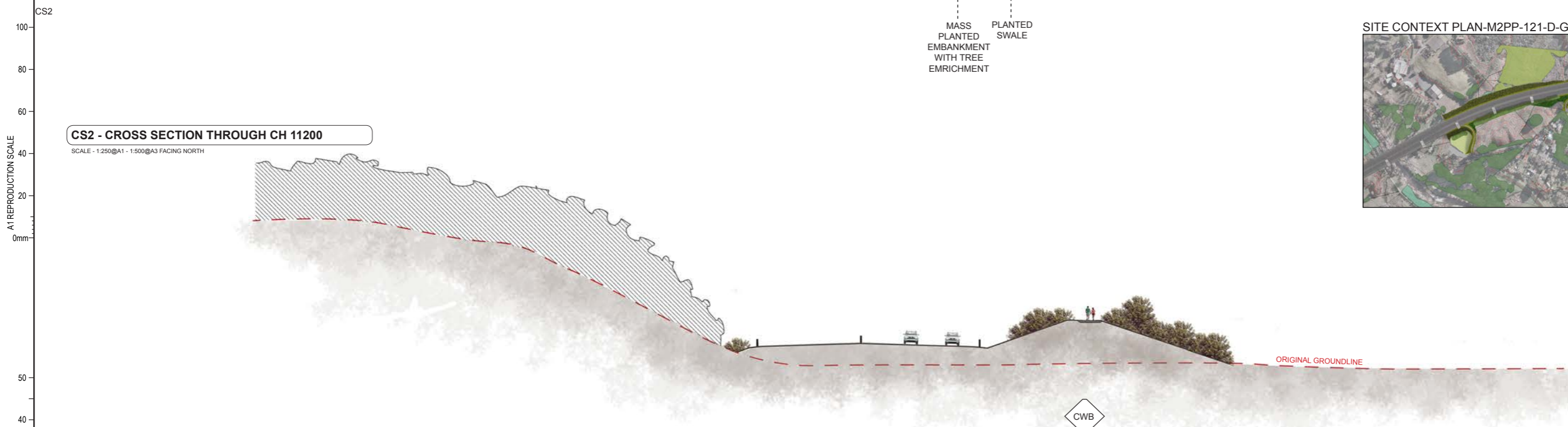


SITE CONTEXT PLAN-M2PP-121-D-GPH-8102



**CS2 - CROSS SECTION THROUGH CH 11200**

SCALE - 1:250@A1 - 1:500@A3 FACING NORTH



No.	Revision	By	Chk	Chk-V	Appd	Date
C	CERTIFIED ISSUE	MP				31/03/15
B	FOR CERTIFICATION	MP				03/03/15
A	PRELIMINARY ISSUE TO KCDC	VB				

Original Scale (A1)	Design	Drawn	10/12/14	Approved For Construction*
AS SHOWN	VB			
Reduced Scale (A3)	VB			
AS SHOWN				

Project: SH1 MACKAYS TO PEKA PEKA EXPRESSWAY  
RP 1012/0.00 TO 1023/5.00

Title: SSMP 8 [480-510] - SHEET 5 SECTIONS

Drawing No: M2PP-121-D-DWG-8501

Rev. C

DETAIL DESIGN (DET)

Document No.



**CS3 - CROSS SECTION THROUGH CH 11660**

FACING WEST SCALE - 1:250@A1 1:500@A3

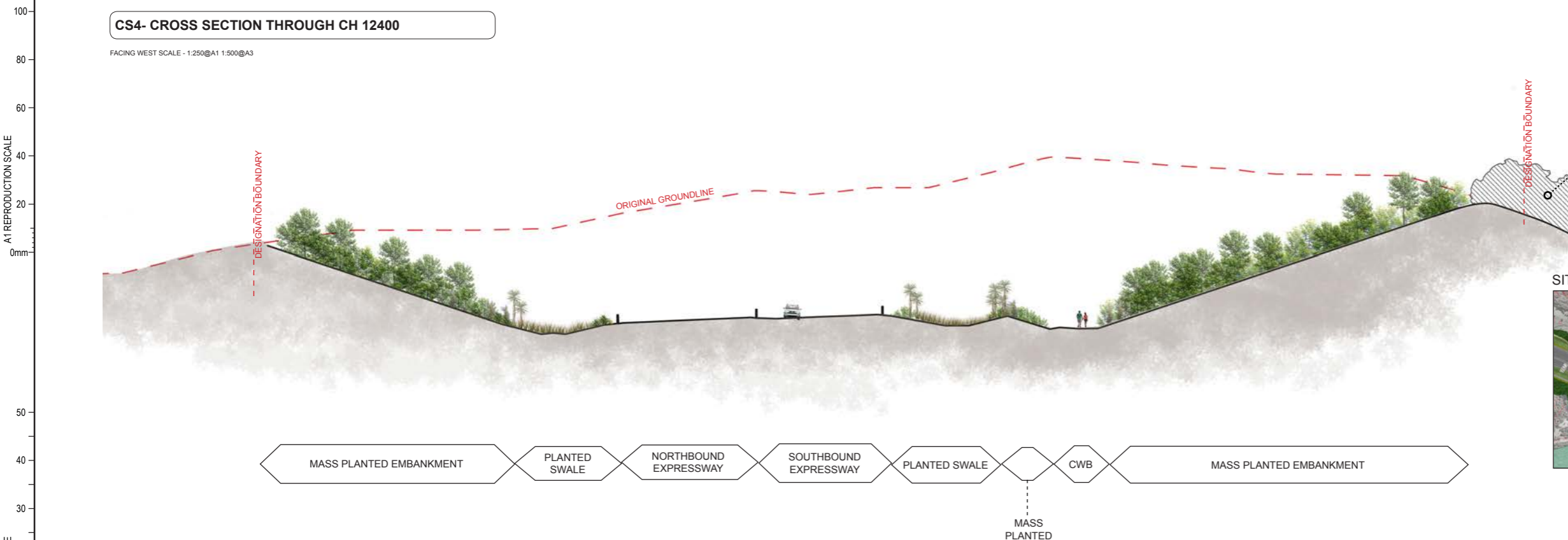
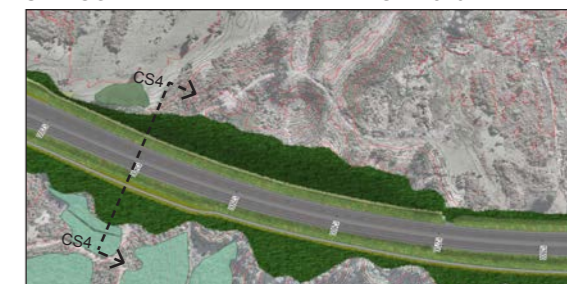
**SITE CONTEXT PLAN-M2PP-121-D-GPH-8103**



**CS4 - CROSS SECTION THROUGH CH 12400**

FACING WEST SCALE - 1:250@A1 1:500@A3

**SITE CONTEXT PLAN-M2PP-121-D-GPH-8104**



A1 REPRODUCTION SCALE  
A3 REPRODUCTION SCALE

No.	Revision	By	Chk	Chk-V	Appd	Date
C	CERTIFIED ISSUE	MP				31/03/15
B	FOR CERTIFICATION	MP				03/03/15
A	PRELIMINARY ISSUE TO KCDC	VB				

Original Scale (A1)	Design	Drawn	10/12/14	Approved For Construction*
AS SHOWN	VB			
Reduced Scale (A3)	VB			
AS SHOWN				

Project: SH1 MACKAYS TO PEKA PEKA EXPRESSWAY  
RP 1012/0.00 TO 1023/5.00

Title: SSMP 8 [480-510] - SHEET 6 SECTIONS

Drawing No: M2PP-121-D-DWG-8502  
Rev: C

DETAIL DESIGN (DET)

Document No.





**Landscape**

- Individual Retained Trees
- Retained Vegetation
- Grass
- Massed Planting
- with Tree Enrichment
- Wetland / Riparian Planting
- Massed planting low
- Specimen Tree

**Ecology**

- Retained Valued Terrestrial Vegetation
- Retained Valued Wetland Vegetation
- Planted Indigenous Terrestrial Habitat
- Planted Indigenous Wetland Habitat
- Stream Mitigation / Riparian Habitat
- Existing Water Body
- Batter Slope
- Tadpole

**CWB**

- Loose Chip CWB
- Chip Seal CWB
- Concrete CWB
- Existing Access Track or CWB
- Horse Mounting Block - Locations TBC
- Cycleway painted surface - non slip

**General**

- Designation Boundary
- Wire Barrier
- W-Barrier
- Barrier Transition
- Concrete Traffic Barrier
- Culvert
- Swale
- Planted Swale
- Flood Storage Area

**Urban Design**

- Concrete Bridge Barrier
- Concrete Noise Wall
- Culvert Headwall
- Retaining Wall
- Bridge Deck
- Bridge Abutment
- Bridge Piers
- 2.0m Timber Noise Fence
- Traffic Signal Poles

A1 REPRODUCTION SCALE

A3 REPRODUCTION SCALE

C	CERTIFIED ISSUE	MP		31/03/15	Original Scale (A1)	Design	Drawn	VB	10/12/14	Approved For Construction*
B	FOR CERTIFICATION	MP		03/03/15	1:250	Drawn	VB			Date
A	PRELIMINARY ISSUE TO KCDC	VB			Revised Scale (A3)	Design	VB			
No.	Revision	By	Chk	Chk-V	Appd	Date				

Original Scale (A1)	1:250
Revised Scale (A3)	1:500
* Refer to Revision 1 for Original Signature	

**NZ TRANSPORT AGENCY**  
WAKA KOTAHĪ

**MacKays to Peka Peka**  
Wellington Northern Corridor

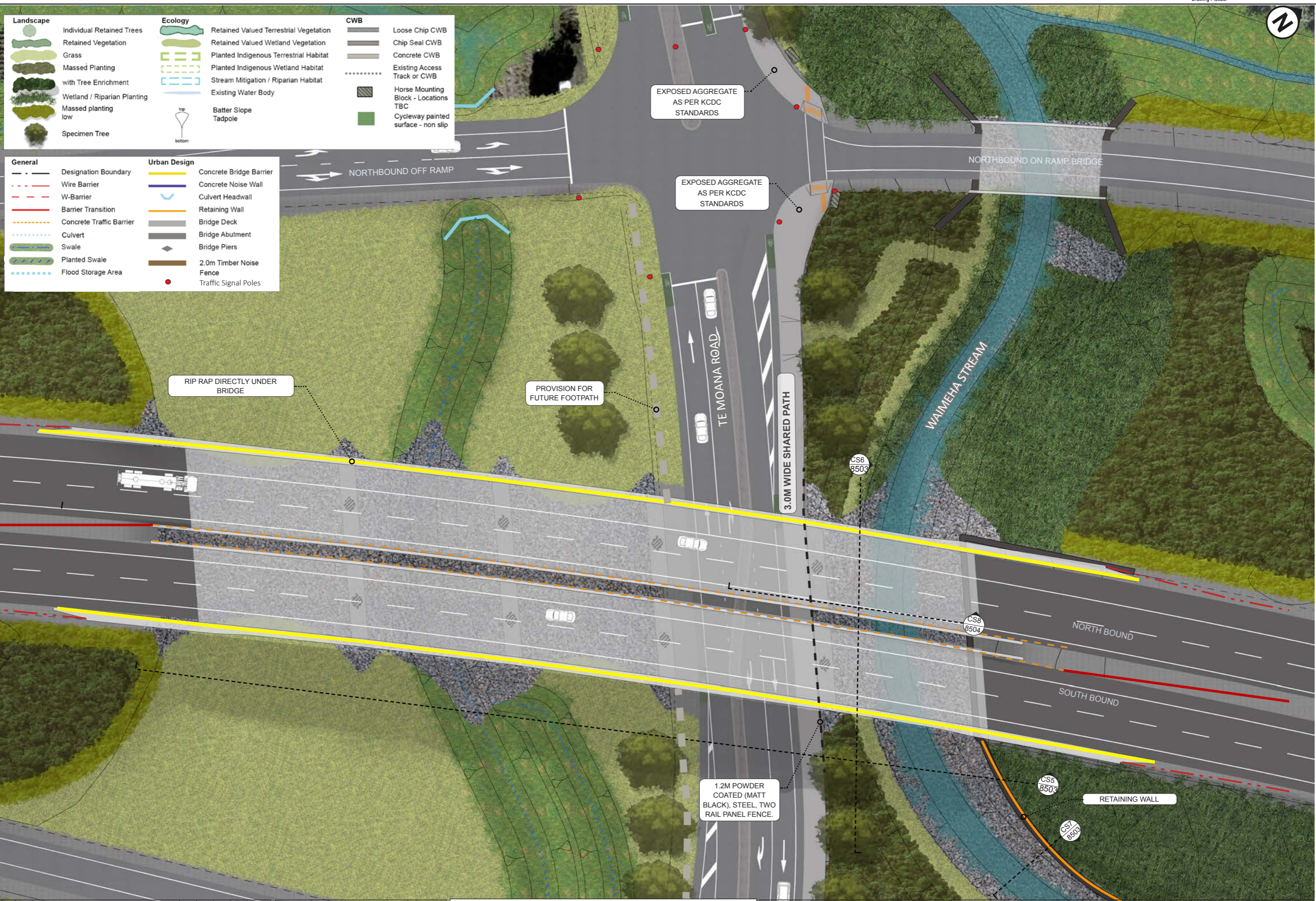
SH1 MACKAYS TO PEKA PEKA EXPRESSWAY  
RP 1012/0.00 TO 1023/5.00

SSMP 8 [480-510] - SHEET 7  
BRIDGE MASTERPLAN

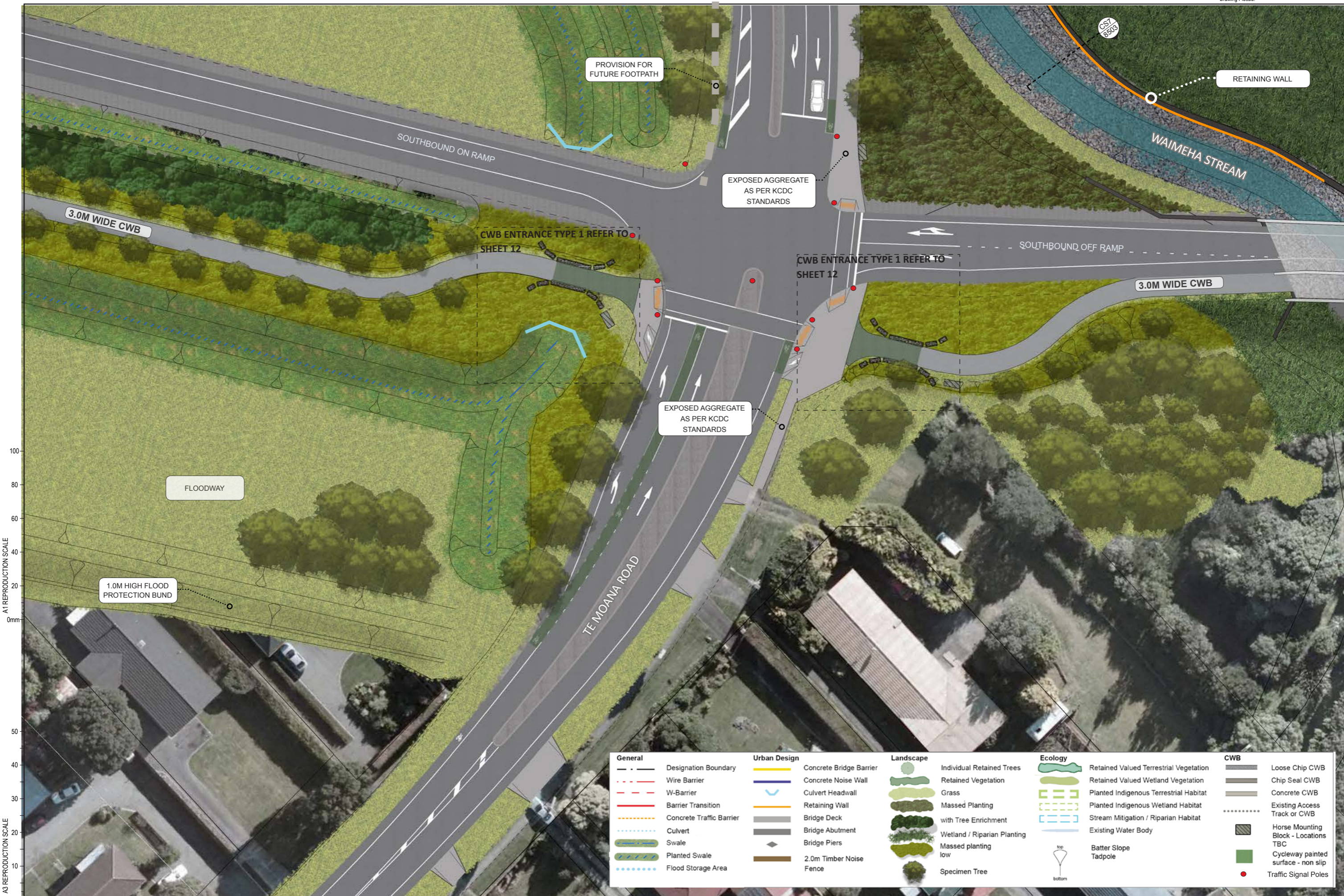
M2PP-121-D-DWG-8301

C

DETAIL DESIGN (DET)







A1 REPRODUCTION SCALE

A3 REPRODUCTION SCALE

DETAIL DESIGN (DET)

General	Urban Design	Landscape	Ecology	CWB
--- Designation Boundary	Concrete Bridge Barrier	Individual Retained Trees	Retained Valued Terrestrial Vegetation	Loose Chip CWB
- - - Wire Barrier	Concrete Noise Wall	Retained Vegetation	Retained Valued Wetland Vegetation	Chip Seal CWB
- - - W-Barrier	Culvert Headwall	Grass	Planted Indigenous Terrestrial Habitat	Concrete CWB
- - - Barrier Transition	Retaining Wall	Massed Planting	Planted Indigenous Wetland Habitat	Existing Access Track or CWB
- - - Concrete Traffic Barrier	Bridge Deck	with Tree Enrichment	Stream Mitigation / Riparian Habitat	Horse Mounting Block - Locations TBC
- - - Culvert	Bridge Abutment	Wetland / Riparian Planting	Existing Water Body	Cycleway painted surface - non slip
- - - Swale	Bridge Piers	Massed planting low	Batter Slope	Traffic Signal Poles
- - - Planted Swale	2.0m Timber Noise Fence	Specimen Tree	Tadpole	
- - - Flood Storage Area				

C	CERTIFIED ISSUE	MP			31/03/15
B	FOR CERTIFICATION	MP			03/03/15
A	PRELIMINARY ISSUE TO KCDC	VB			
No.	Revision	By	Chk	Chk-V	Appd

Original Scale (A1)	Design	Drawn	VB	10/12/14	Approved For Construction*
AS SHOWN	Drawn	VB			Date
Reduced Scale (A3)	Checked				
AS SHOWN	Checked				



Project: SH1 MACKAYS TO PEKA PEKA EXPRESSWAY  
RP 1012/0.00 TO 1023/5.00

Title: SSMP 8 [480-510] - SHEET 8  
BRIDGE MASTERPLAN

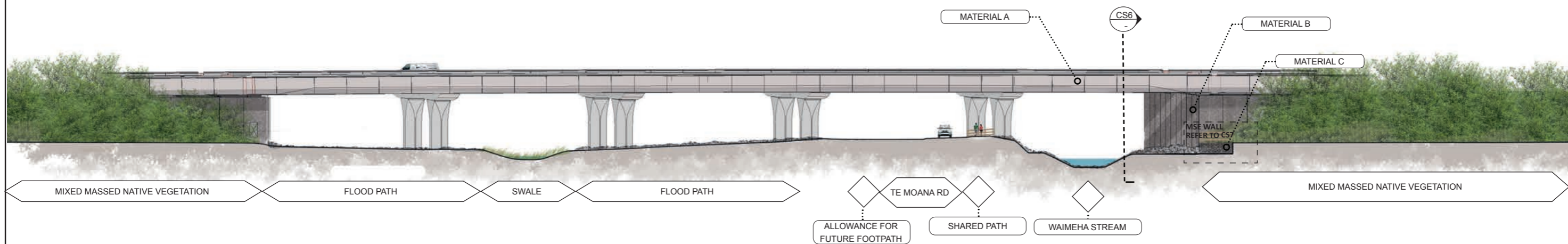
Drawing No: M2PP-121-D-DWG-8302

Rev: C



**CS5 - CROSS SECTIONAL ELEVATION - TE MOANA ROAD BRIDGE**

1:500@A3 FACING WEST

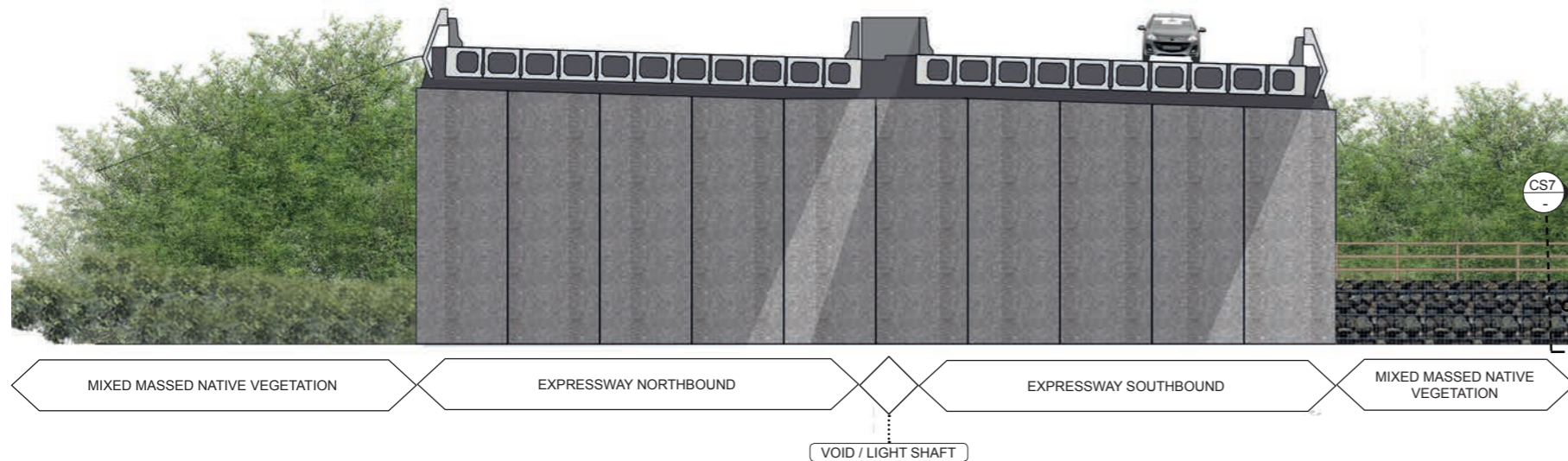


**CS6 - NORTH ABUTMENT**

1:200@A3 FACING SOUTH

A1 REPRODUCTION SCALE

A3 REPRODUCTION SCALE

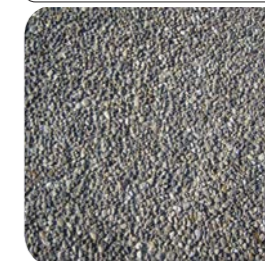


**MATERIAL A**



BRIDGE BARRIER:  
PRECAST  
CONCRETE WITH  
2 COATS WHITE  
KIEM COATING &  
ANTI GRAFFITI  
PROTECTION-  
PENDING SAMPLE  
PANEL APPROVAL

**MATERIAL B**



BRIDGE ABUTMENT:  
PRECAST  
CONCRETE PANEL  
WITH EXPOSED  
AGGREGATE FINISH  
AND MATT GRAFFITI  
PROTECTION-  
PENDING SAMPLE  
PANEL APPROVAL

**MATERIAL C**

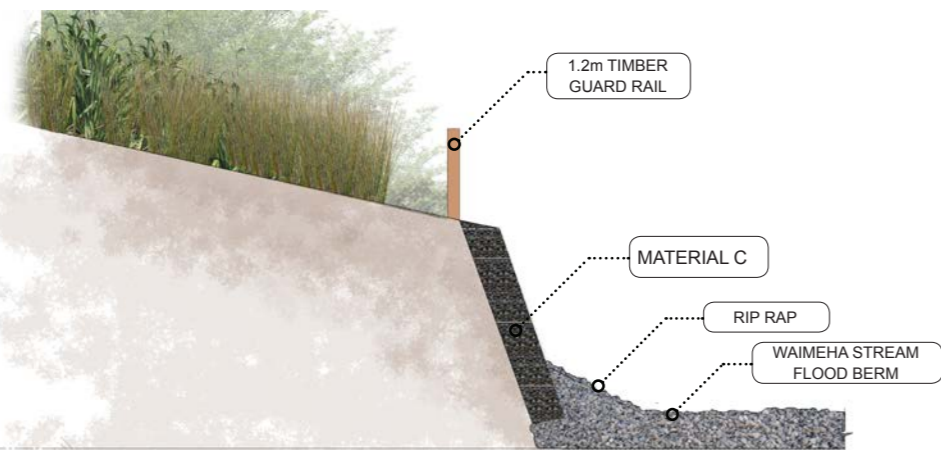


TERRAMESH WALL

**CS7 - WAIMEHA STREAM MSE RETAINING WALL**

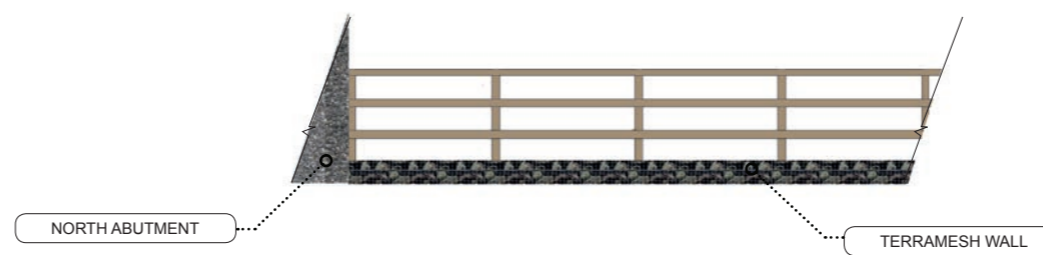
1:100@A3 FACING WEST

A3 REPRODUCTION SCALE



**TIMBER GUARD RAIL ELEVATION**

1:100@A3



- 100X100 TIMBER POSTS - CENTERS TBC
- 100X100 RAILS NOTCHED INTO POSTS
- 1200MM HIGH WITH MAX. 300MM GAPS BETWEEN RAILS

No.	Revision	By	Chk	Chk-V	Appd	Date
C	CERTIFIED ISSUE	MP				31/03/15
B	FOR CERTIFICATION	MP				03/03/15
A	PRELIMINARY ISSUE TO KCDC	VB				

Original Scale (A1)	Design	Drawn	Checked	Approved For Construction
AS SHOWN	VB	VB	10/12/14	
Reduced Scale (A3)	Design Verifier	Design Check	Date	
AS SHOWN				

\* Refer to Revision 1 for Original Signature



**MacKays to Peka Peka**  
Wellington Northern Corridor

Project: SH1 MACKAYS TO PEKA PEKA EXPRESSWAY  
RP 1012/0.00 TO 1023/5.00

Title: SSMP 8 [480-510] - SHEET 9  
BRIDGE SECTIONS

Document No.: M2PP-121-D-DWG-8503

Rev: C

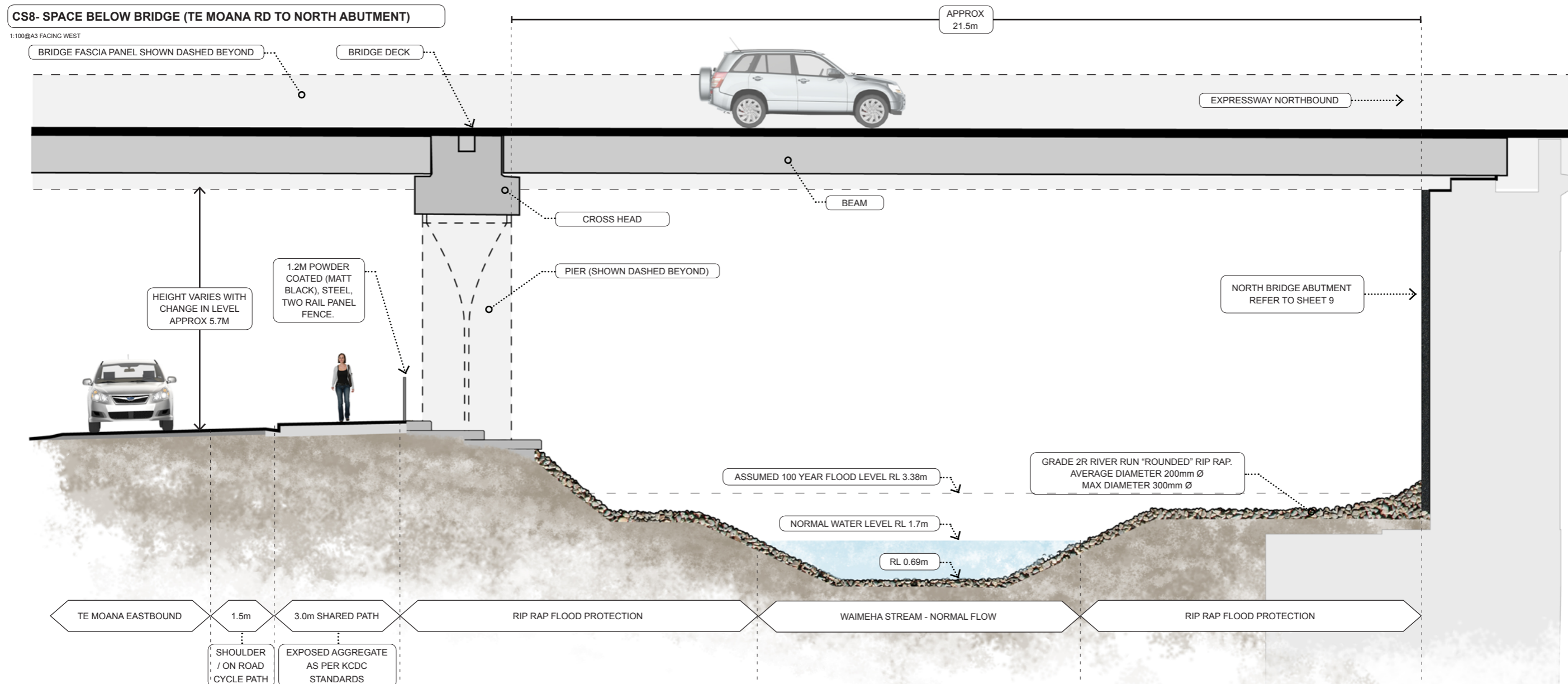
DETAIL DESIGN (DET)



ARTIST'S IMPRESSION



LOCATION PLAN



A1 REPRODUCTION SCALE  
0mm  
20  
30  
40  
50  
60  
80  
100

A3 REPRODUCTION SCALE  
0mm  
10  
20

C	CERTIFIED ISSUE	MP			31/03/15	
B	FOR CERTIFICATION	MP			03/03/15	
A	PRELIMINARY ISSUE TO KCDC	VB				
No.	Revision	By	Clk	Clk-V	Appd	Date

Original Scale (A1)	Design	Drawn	10/12/14	Approved For Construction*
AS SHOWN	VB			Date
Reduced Scale (A3)	Design Verifier			
AS SHOWN	Diag Check			

\* Refer to Revision 1 for Original Signature



Project: SH1 MACKAYS TO PEKA PEKA EXPRESSWAY  
RP 1012/0.00 TO 1023/5.00

Title: SSMP 8 [480-510] - SHEET 9A  
SECTION BELOW BRIDGE

Drawing No: M2PP-121-D-DWG-8504

Rev. C

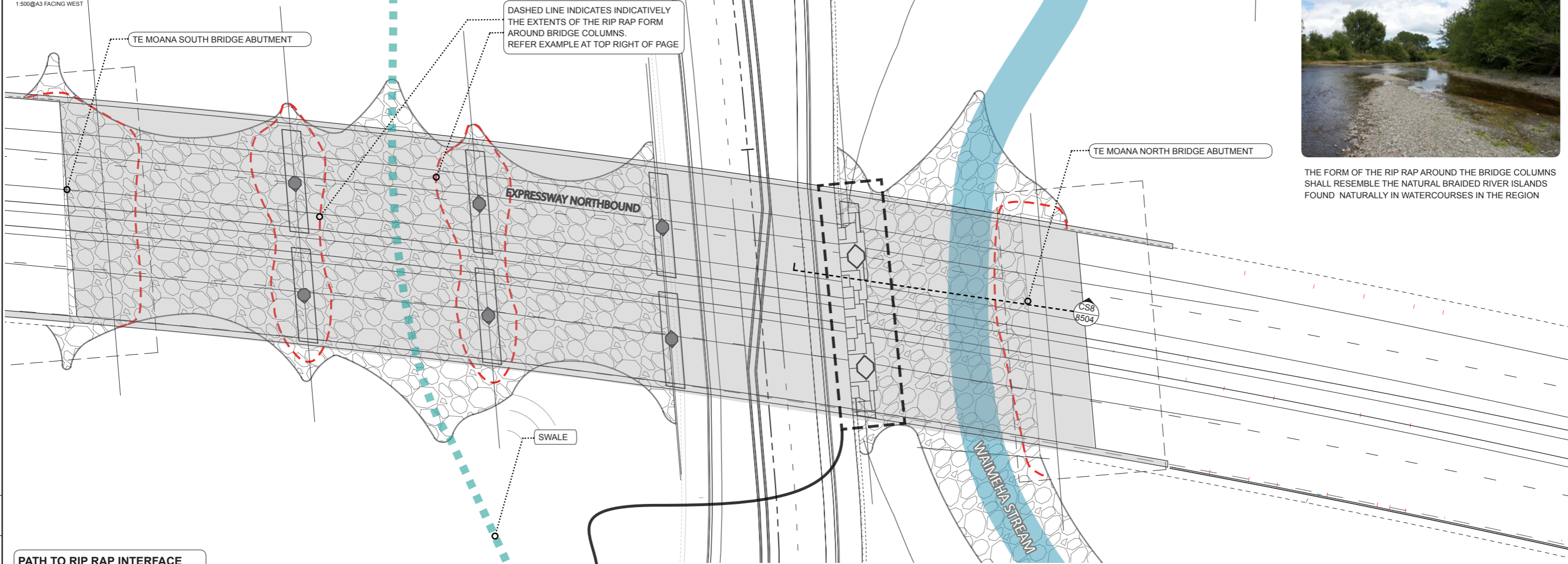
DETAIL DESIGN (DET)

Document No.



**RIP RAP EXTENT PLAN**

1:500@A3 FACING WEST



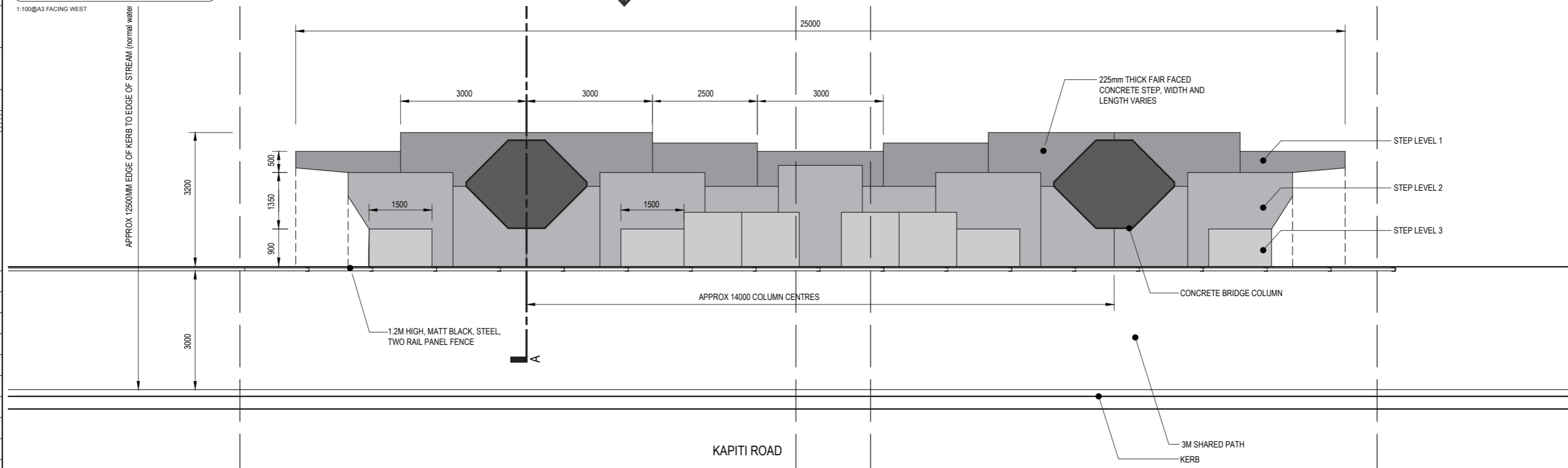
THE FORM OF THE RIP RAP AROUND THE BRIDGE COLUMNS SHALL RESEMBLE THE NATURAL BRAIDED RIVER ISLANDS FOUND NATURALLY IN WATERCOURSES IN THE REGION

**PATH TO RIP RAP INTERFACE**

1:100@A3 FACING WEST

A1 REPRODUCTION SCALE

A3 REPRODUCTION SCALE



C	CERTIFIED ISSUE	MP		31/03/15
B	FOR CERTIFICATION	MP		03/03/15
A	PRELIMINARY ISSUE TO KDC	VB		
No.	Revision	By	Chk	Chk-V
		Appd		Date

Original Scale (A1)	Design	Drawn	10/12/14	Approved For Construction*
AS SHOWN	Drawn	VB		Date
Reduced Scale (A3)	Design Checker			
AS SHOWN	Refer to Revision 1 for Original Signature			



**MacKays to Peka Peka**  
Wellington Northern Corridor

Project: SH1 MACKAYS TO PEKA PEKA EXPRESSWAY  
RP 1012/0.00 TO 1023/5.00

Title: SSMP 8 [480-510] - SHEET 9B  
RIP RAP PLAN TE MOANA

Drawing No: M2PP-121-D-DWG-8303

Rev: C

DETAIL DESIGN (DET)





INDICATIVE VISUALISATION - TE MOANA ROAD BRIDGE (WEST SIDE OF EXPRESSWAY LOOKING EAST) REFER TO PLANS FOR FINAL DETAILS

A1 REPRODUCTION SCALE

0mm

A3 REPRODUCTION SCALE

0mm

- TE MOANA BRIDGE - ARCHITECTURAL LIGHTING DESIGN PRINCIPLES.**
1. ARCHITECTURAL LIGHTING TO BE USED TO ADD ADDITIONAL INTEREST AND SAFETY AT NIGHT.
  2. SOFTLY UP LIGHT THE 4 COLUMNS (THE TWO EITHER SIDE OF TE MOANA ROAD) TO ACCENTUATE THE FORM OF THE COLUMNS.
  3. WHITE - COOL WHITE LIGHT COLOURS/SHADES TO BE USED TO DIFFERENTIATE ARCHITECTURAL LIGHTING FROM ROAD LIGHTING. EXACT COLOURS TO BE CONFIRMED



INDICATIVE NIGHT LIGHTING VISUALISATION - TE MOANA BRIDGE

No.	Revision	By	Chk	Chk-V	Appd	Date
C	CERTIFIED ISSUE	MP				31/03/15
B	FOR CERTIFICATION	MP				03/03/15
A	PRELIMINARY ISSUE TO KCDC	VB				

Original Scale (A1)	Design Drawn	AS SHOWN	Approved For Construction*
AS SHOWN	VB	10/12/14	Date
Reduced Scale (A3)	Diag Verifier		
AS SHOWN	Diag Check		

\* Refer to Revision 1 for Original Signature



Project: SH1 MACKAYS TO PEKA PEKA EXPRESSWAY  
RP 1012/0.00 TO 1023/5.00

Title: SSMP 8 [480-510] - SHEET 10  
TE MOANA ROAD

Drawing No: M2PP-121-D-DWG-8800

Rev. C

DETAIL DESIGN (DET)