

VEGETATION TO BE RETAINED

- TERRESTRIAL VALUED VEGETATION (CONSENT CONDITION G.41 c) ii)
- WETLAND VALUED VEGETATION (CONSENT CONDITION G.41 c) iii)
- TERRESTRIAL VEGETATION - NATIVE
- TERRESTRIAL VEGETATION - EXOTIC
- WETLAND VEGETATION - NATIVE
- WETLAND VEGETATION - EXOTIC / OPEN WATER
- LANDFORM TO BE RETAINED
- DESIGNATION

- NOTES:**
- AREAS OF VEGETATION IDENTIFIED TO BE RETAINED ARE SUBJECT TO MARKING ON SITE BY AN ECOLOGIST OR LANDSCAPE ARCHITECT PRIOR TO TEMPORARY FENCING.
 - REMOVAL OF ANY VEGETATION MARKED FOR RETENTION MUST BE APPROVED BY A LANDSCAPE ARCHITECT OR ECOLOGIST.
 - COMPLIANCE WITH THE ABOVE IS A REQUIREMENT OF THE CONSENT CONDITIONS.

A1 REPRODUCTION SCALE
0mm 20 40 60 80 100

A3 REPRODUCTION SCALE
0mm 10 20 30 40 50

MATCHLINE REFER: M2PP-35R-D-DWG-8702

MATCHLINE REFER: M2PP-35R-D-DWG-8703

MATCHLINE REFER: M2PP-35R-D-DWG-8705

ORIGINAL DRAWING IN COLOUR FOR CONSTRUCTION

No.	Revision	By	Chk	Chk-V	Appd	Date
3	FOR CONSTRUCTION - REVISED AS NOTED	MP	GFB	BF	DS	05.11.14
2	FOR KCDC CERTIFICATION - REVISED AS NOTED	MP	GFB	BF	DS	29.10.14
1	FOR CONSTRUCTION - WEED CLEARANCE	MP	GFB	DH	DS	17.03.14

Original Scale (A1)	Design	Drawn	Checked	Approved For Construction
1:500	S DUNN	M POWELL	09.12.13	P. BRADSHAW
Reduced Scale (A3)	Design	Dwg Verifier	Dwg Check	Date
1:1000	B. FAULKNER	C. F. B.	17.03.14	19.03.14



MacKays to Peka Peka
Wellington Northern Corridor

Project: SH1 MACKAYS TO PEKA PEKA EXPRESSWAY
RP 1012/0.00 TO 1023/5.00

Title: RAUMATI RD TO WHAREMAKAU VEGETATION TO BE RETAINED
SHEET 4

Drawing No: M2PP-35R-D-DWG-8704
Rev: 3

MATCHLINE REFER: M2PP-35R-D-DWG-8704

350 370



A1 REPRODUCTION SCALE
0mm 20 40 60 80 100

A3 REPRODUCTION SCALE
0mm 10 20 30 40 50

MATCHLINE REFER: M2PP-35R-D-DWG-8703

WHAREMAKAU STREAM
WHAREMAKAU STREAM
WHAREMAKAU STREAM

VEGETATION TO BE RETAINED

- TERRESTRIAL VALUED VEGETATION (CONSENT CONDITION G.41 c) i)
- WETLAND VALUED VEGETATION (CONSENT CONDITION G.41 c) ii)
- TERRESTRIAL VEGETATION - NATIVE
- TERRESTRIAL VEGETATION - EXOTIC
- WETLAND VEGETATION - NATIVE
- WETLAND VEGETATION - EXOTIC / OPEN WATER

LANDFORM TO BE RETAINED

DESIGNATION

NOTES:

- AREAS OF VEGETATION IDENTIFIED TO BE RETAINED ARE SUBJECT TO MARKING ON SITE BY AN ECOLOGIST OR LANDSCAPE ARCHITECT PRIOR TO TEMPORARY FENCING.
- REMOVAL OF ANY VEGETATION MARKED FOR RETENTION MUST BE APPROVED BY A LANDSCAPE ARCHITECT OR ECOLOGIST.
- COMPLIANCE WITH THE ABOVE IS A REQUIREMENT OF THE CONSENT CONDITIONS.

No.	Revision	By	Chk	Chk-V	Appd	Date
3	FOR CONSTRUCTION	MP	GFB	BF	DS	05.11.14
2	FOR KCDC CERTIFICATION	MP	GFB	BF	DS	29.10.14
1	FOR CONSTRUCTION - WEED CLEARANCE	MP	GFB	DH	DS	17.03.14

Original Scale (A1)	Design	Drawn	Checked	Approved For Construction
1:500	S DUNN 09.12.13	M POWELL 09.12.13	B. FAULKNER 17.03.14	P. BRADSHAW 17.03.14
Reduced Scale (A3)			C. F.B 17.03.14	Date 19.03.14

* Refer to Revision 1 for Original Signature



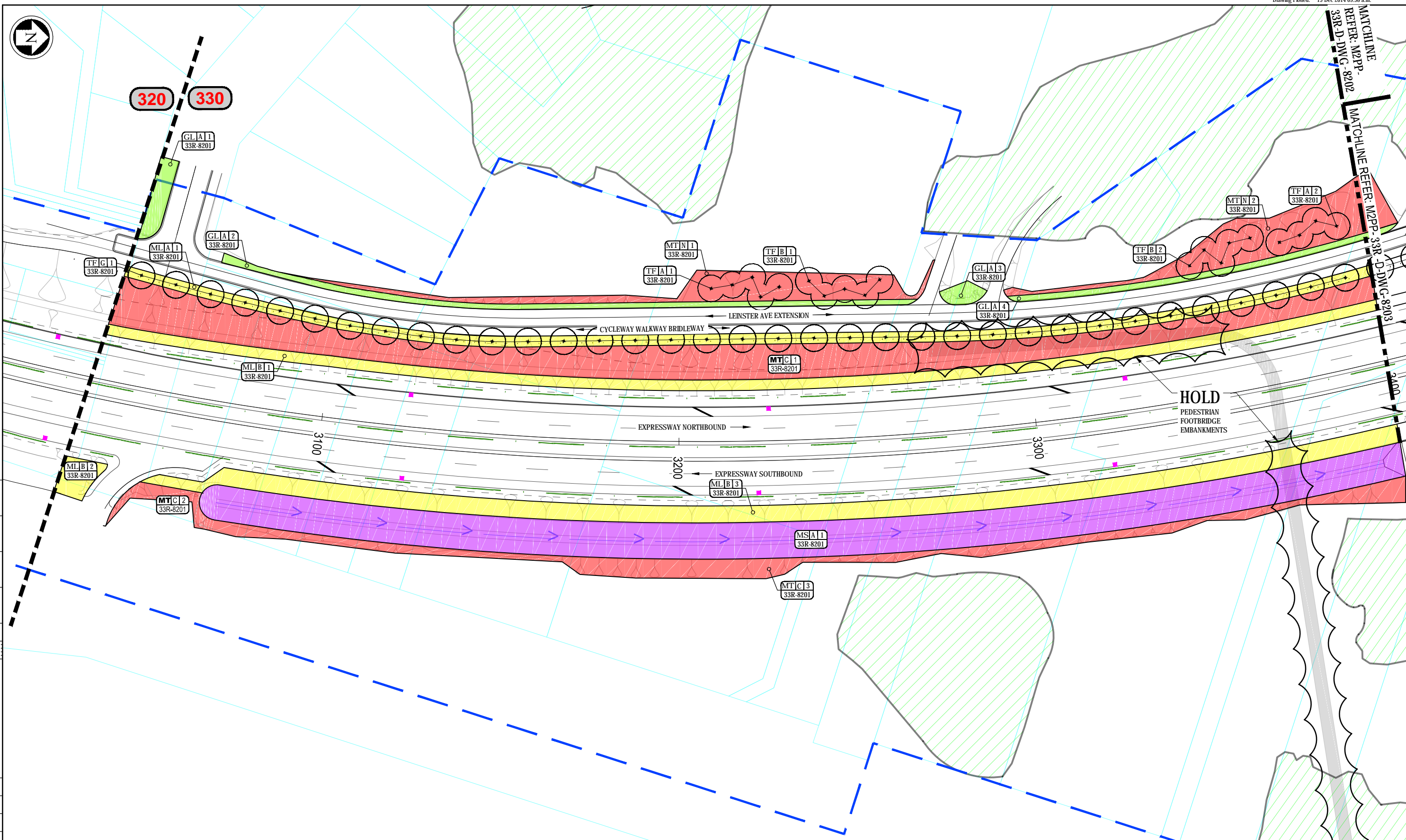
MacKays to Peka Peka
Wellington Northern Corridor

Project: SH1 MACKAYS TO PEKA PEKA EXPRESSWAY
RP 1012/0.00 TO 1023/5.00

Title: RAUMATI RD TO WHAREMAKAU VEGETATION TO BE RETAINED SHEET 5

Drawing No: M2PP-35R-D-DWG-8705
Rev: 3

350 ORIGINAL DRAWING IN COLOUR FOR CONSTRUCTION



KEY

MP MASSED PLANTING	TF x TREES - FORESTRY GRADE	GL GRASS - LOW	WP WETLAND PLANTING
ML MASSED PLANTING - LOW	TS TREES - SPECIMEN GRADE	GS GRASS - SWALE	RP RIPARIAN PLANTING
MT MASSED PLANTING - TREE ENRICHMENT	TP TREES - POLE GRADE	GR GRASS - ROUGH	
MS MASSED PLANTING - SWALE	^ TREE WIND SHELTER		
— PLANTING BOUNDARY	▨ EXISTING VEGETATION TO BE RETAINED		

NOTES:

- REFER TO PLANTING SCHEDULES (8211) FOR PLANT MIX DETAILS.
- REFER TO STANDARD PLANTING DETAILS (8900 SERIES) FOR PLANTING DETAIL.
- A 1.5m OFFSET FROM THE VERGE HAS BEEN MADE TO ACCOMMODATE THE EXTENT OF SUBBASE. THE ACTUAL OFFSET IS TO BE CONFIRMED ON SITE.

No.	Revision	By	Chk	Chk.V	Appd	Date
1	FOR CONSTRUCTION	MP				15.12.14

Original Scale (A1)	Design	Drawn	Date	Approved For Construction
1:500	F BAGGLEY	M. POWELL	11.08.14	
Reduced Scale (A3)	Design Check	B EVANS	18.11.14	
1:1000	Dwg Check	G F-B	18.11.14	15.12.14

* Refer to Revision 1 for Original Signature

NZ TRANSPORT AGENCY
WAKA KOTAHĪ

MacKays to Peka Peka
Wellington Northern Corridor

Project: SH1 MACKAYS TO PEKA PEKA EXPRESSWAY
RP 1012/0.00 TO 1023/5.00

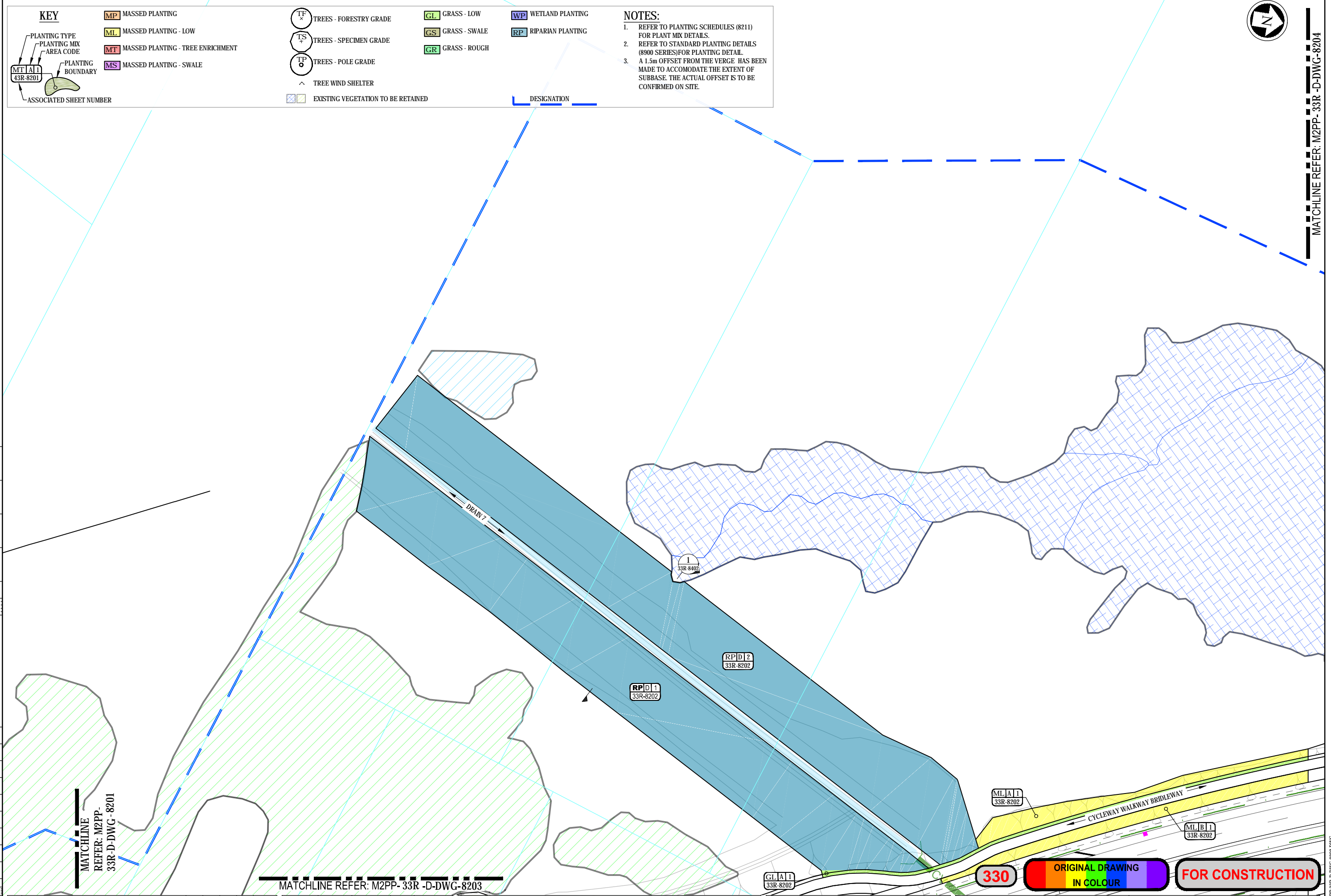
Title: LEINSTER AVE TO RAUMATI RD
PLANTING PLAN
SHEET 1

Drawing No: M2PP-33R-D-DWG-8201
Rev: 1

330 ORIGINAL DRAWING IN COLOUR FOR CONSTRUCTION



MATCHLINE REFER: M2PP-33R-D-DWG-8204



KEY

MT MASSES PLANTING - TREE ENRICHMENT	ML MASSES PLANTING - SWALE	MP MASSES PLANTING	GL GRASS - LOW	WP WETLAND PLANTING
ML MASSES PLANTING - LOW	GS GRASS - SWALE	TS TREES - SPECIMEN GRADE	GR GRASS - ROUGH	RP RIPARIAN PLANTING
TP TREES - POLE GRADE	TF TREES - FORESTRY GRADE	^ TREE WIND SHELTER		
--- PLANTING BOUNDARY	MT A1 1 ASSOCIATED SHEET NUMBER	▨ EXISTING VEGETATION TO BE RETAINED		

NOTES:

- REFER TO PLANTING SCHEDULES (8211) FOR PLANT MIX DETAILS.
- REFER TO STANDARD PLANTING DETAILS (8900 SERIES) FOR PLANTING DETAIL.
- A 1.5m OFFSET FROM THE VERGE HAS BEEN MADE TO ACCOMMODATE THE EXTENT OF SUBBASE. THE ACTUAL OFFSET IS TO BE CONFIRMED ON SITE.

A1 REPRODUCTION SCALE
0mm 20 40 60 80 100

A3 REPRODUCTION SCALE
0mm 10 20 30 40 50

No.	Revision	By	Chk	Chk.V	Appd	Date
1	FOR CONSTRUCTION	MP				15.12.14

Original Scale (A1)	Design	F BAGGLEY	11.08.14	Approved For Construction*
1:500	Drawn	M. POWELL	11.08.14	
Reduced Scale (A3)	Dwg Verifier	B EVANS	18.11.14	
1:1000	Dwg Check	C F-B	18.11.14	Date 15.12.14

* Refer to Revision 1 for Original Signature

NZ TRANSPORT AGENCY
WAKA KOTAHU

MacKays to Peka Peka
Wellington Northern Corridor

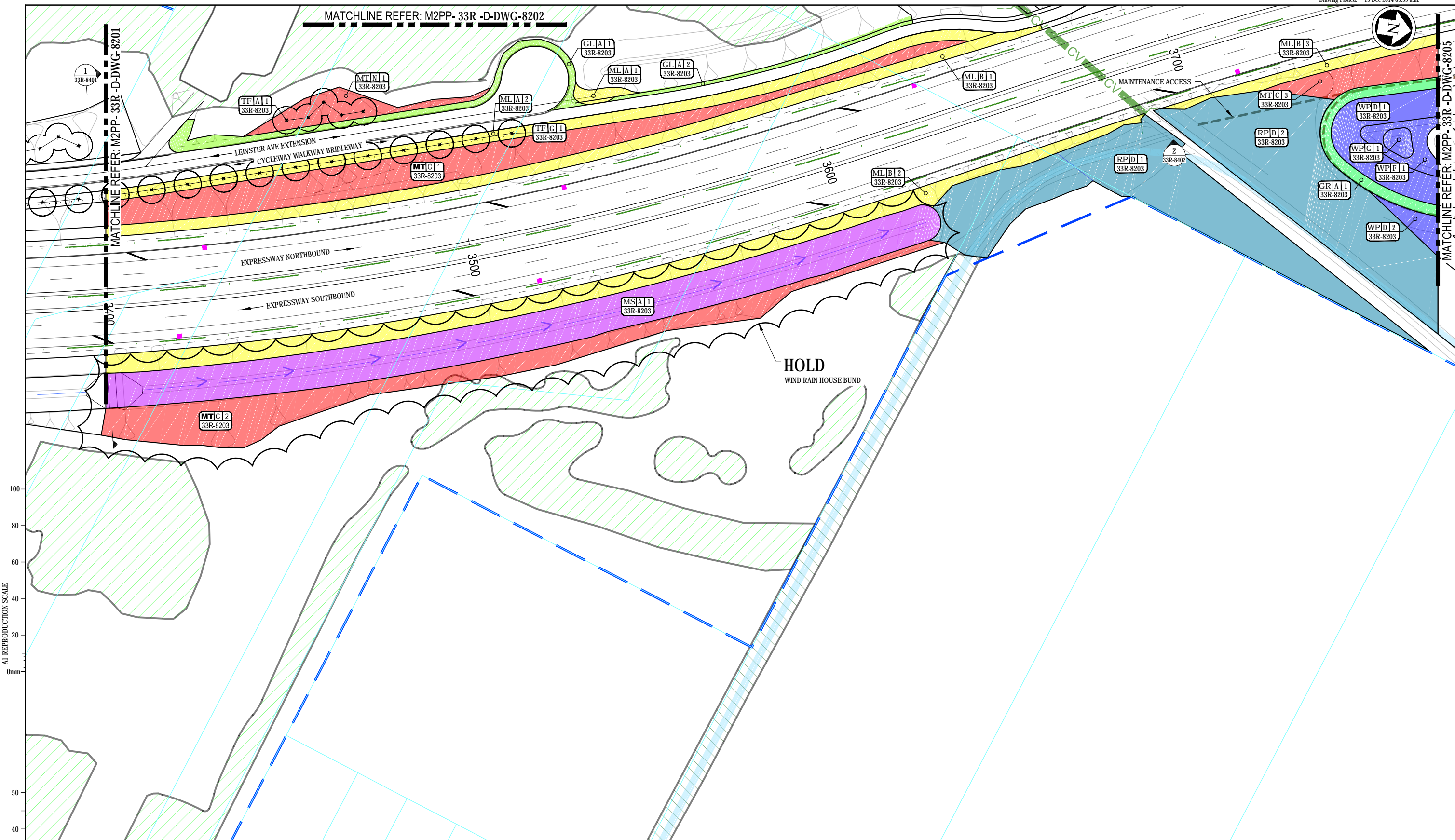
Project: SH1 MACKAYS TO PEKA PEKA EXPRESSWAY
RP 1012/0.00 TO 1023/5.00

Title: LEINSTER AVE TO RAUMATI RD
PLANTING PLAN
SHEET 2

Drawing No: M2PP-33R-D-DWG-8202
Rev: 1

330 ORIGINAL DRAWING IN COLOUR FOR CONSTRUCTION

MATCHLINE REFER: M2PP-33R-D-DWG-8202



A1 REPRODUCTION SCALE

A3 REPRODUCTION SCALE

KEY		PLANTING TYPE		PLANTING MIX		PLANTING AREA CODE		PLANTING BOUNDARY		ASSOCIATED SHEET NUMBER														
	MASSED PLANTING		TREES - FORESTRY GRADE		GRASS - LOW		WETLAND PLANTING		MASSED PLANTING - TREE ENRICHMENT		TREES - SPECIMEN GRADE		GRASS - SWALE		RIPARIAN PLANTING		MT A 1		GRASS - ROUGH		TREES - POLE GRADE		TREE WIND SHELTER	
	MASSED PLANTING - LOW		TREES - SPECIMEN GRADE		MASSED PLANTING - SWALE		EXISTING VEGETATION TO BE RETAINED		DESIGNATION															

NOTES:

- REFER TO PLANTING SCHEDULES (8211) FOR PLANT MIX DETAILS.
- REFER TO STANDARD PLANTING DETAILS (8900 SERIES) FOR PLANTING DETAIL.
- A 1.5m OFFSET FROM THE VERGE HAS BEEN MADE TO ACCOMMODATE THE EXTENT OF SUBBASE. THE ACTUAL OFFSET IS TO BE CONFIRMED ON SITE.

No.	Revision	By	Chk	Chk.V	Appd	Date
1	FOR CONSTRUCTION	MP				15.12.14

Original Scale (A1)	Design	Drawn	Date	Approved For Construction*
1:500	F BAGGLEY	M POWELL	11.08.14	
Reduced Scale (A3)	Dwg Verifier	B EVANS	18.11.14	
1:1000	Dwg Check	C F-B	18.11.14	15.12.14

* Refer to Revision 1 for Original Signature



Project: SH1 MACKAYS TO PEKA PEKA EXPRESSWAY
RP 1012/0.00 TO 1023/5.00

Title: LEINSTER AVE TO RAUMATI RD
PLANTING PLAN
SHEET 3

Drawing No: M2PP-33R-D-DWG-8203
Rev: 1

330

**ORIGINAL DRAWING
IN COLOUR**

FOR CONSTRUCTION

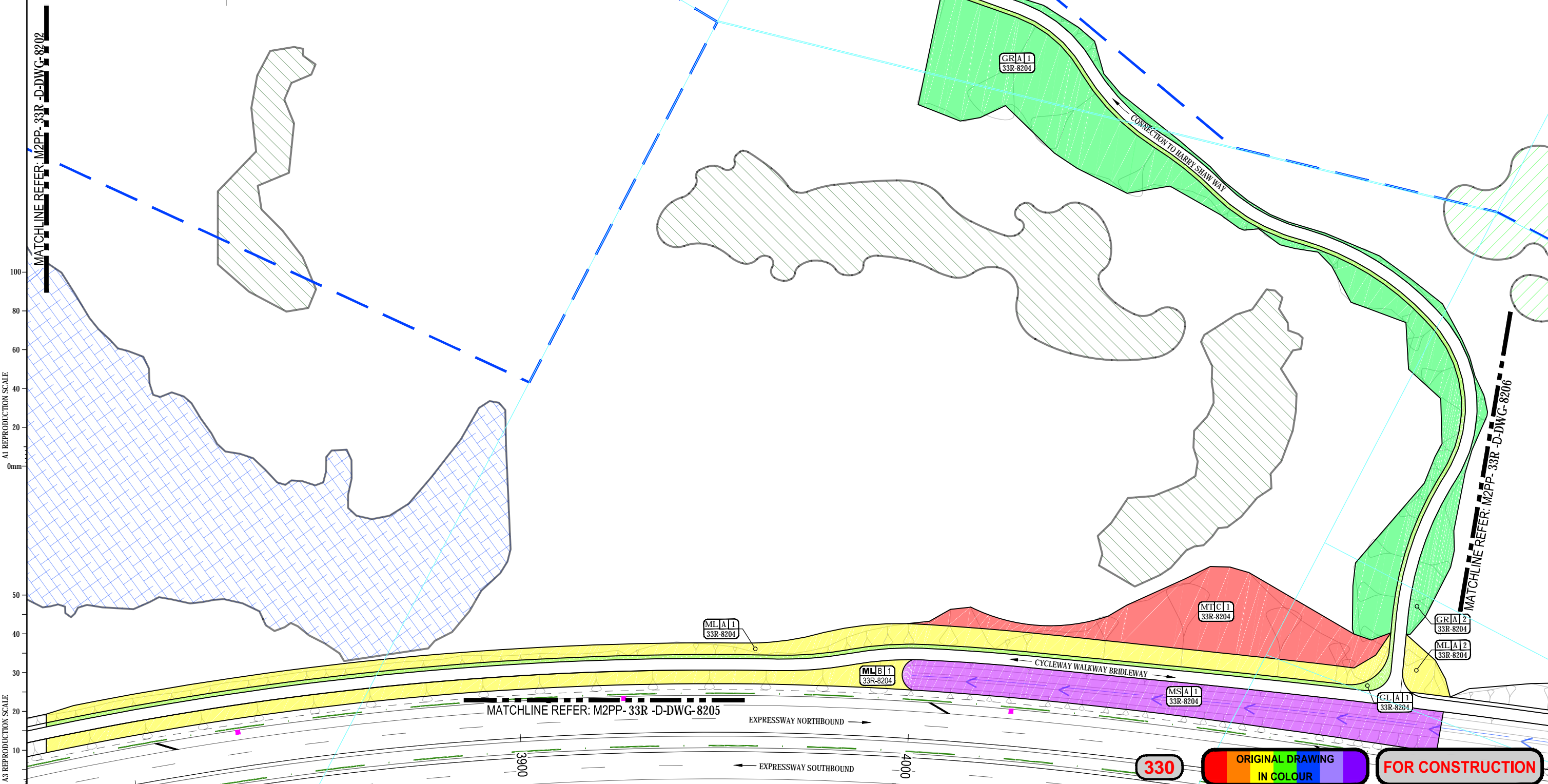


KEY

MP MASSED PLANTING	TF x TREES - FORESTRY GRADE	GL GRASS - LOW	WP WETLAND PLANTING
ML MASSED PLANTING - LOW	TS TREES - SPECIMEN GRADE	GS GRASS - SWALE	RP RIPARIAN PLANTING
MT MASSED PLANTING - TREE ENRICHMENT	TP o TREES - POLE GRADE	GR GRASS - ROUGH	
MS MASSED PLANTING - SWALE	^ TREE WIND SHELTER		
PLANTING TYPE - PLANTING MIX - AREA CODE - PLANTING BOUNDARY	EXISTING VEGETATION TO BE RETAINED		DESIGNATION
ASSOCIATED SHEET NUMBER			

NOTES:

- REFER TO PLANTING SCHEDULES (8211) FOR PLANT MIX DETAILS.
- REFER TO STANDARD PLANTING DETAILS (8900 SERIES) FOR PLANTING DETAIL.
- A 1.5m OFFSET FROM THE VERGE HAS BEEN MADE TO ACCOMMODATE THE EXTENT OF SUBBASE. THE ACTUAL OFFSET IS TO BE CONFIRMED ON SITE.



A1 REPRODUCTION SCALE
0mm 20 40 60 80 100

A3 REPRODUCTION SCALE
0mm 10 20 30 40 50

No.	Revision	By	Chk	Chk.V	Appd	Date
1	FOR CONSTRUCTION	MP				15.12.14

Original Scale (A1)	Design	F BAGGLEY	11.08.14	Approved For Construction*
1:500	Drawn	M. POWELL	11.08.14	
Reduced Scale (A3)	Dwg Verifier	B EVANS	18.11.14	
1:1000	Dwg Check	C F-B	18.11.14	Date 15.12.14
	* Refer to Revision 1 for Original Signature			



Project: SH1 MACKAYS TO PEKA PEKA EXPRESSWAY
RP 1012/0.00 TO 1023/5.00

Title: LEINSTER AVE TO RAUMATI RD
PLANTING PLAN
SHEET 4

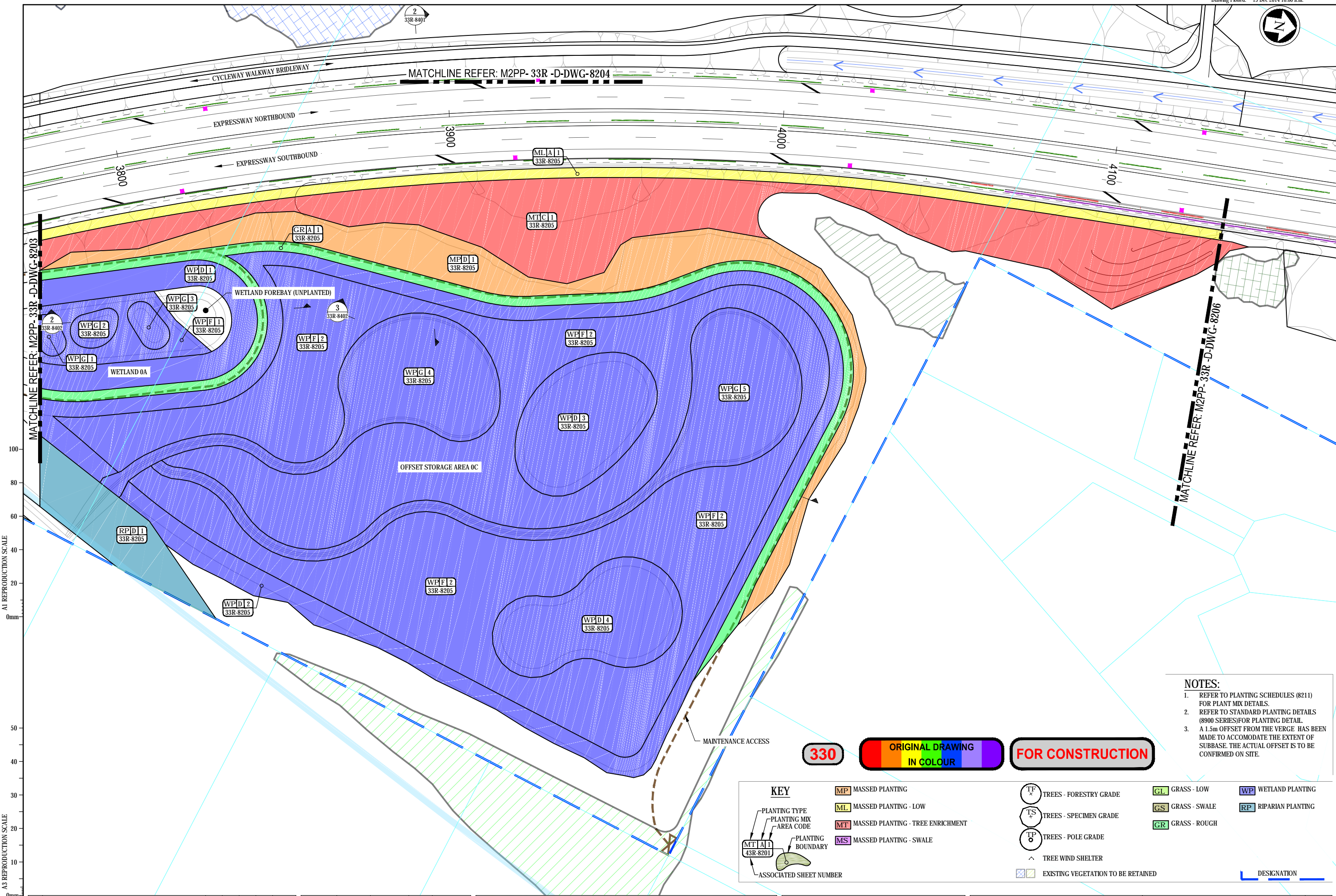
Drawing No: M2PP-33R-D-DWG-8204
Rev: 1

330 ORIGINAL DRAWING IN COLOUR FOR CONSTRUCTION



MATCHLINE REFER: M2PP-33R-D-DWG-8204

CYCLEWAY WALKWAY BRIDLEWAY
EXPRESSWAY NORTHBOUND
EXPRESSWAY SOUTHBOUND



A1 REPRODUCTION SCALE
0mm

A3 REPRODUCTION SCALE
0mm

- NOTES:**
- REFER TO PLANTING SCHEDULES (8211) FOR PLANT MIX DETAILS.
 - REFER TO STANDARD PLANTING DETAILS (8900 SERIES) FOR PLANTING DETAIL.
 - A 1.5m OFFSET FROM THE VERGE HAS BEEN MADE TO ACCOMMODATE THE EXTENT OF SUBBASE. THE ACTUAL OFFSET IS TO BE CONFIRMED ON SITE.

330 ORIGINAL DRAWING IN COLOUR FOR CONSTRUCTION

KEY

<p>PLANTING TYPE PLANTING MIX AREA CODE</p> <p>MT A1 33R-8201</p> <p>ASSOCIATED SHEET NUMBER</p>	<p>MP MASSED PLANTING</p> <p>ML MASSED PLANTING - LOW</p> <p>MT MASSED PLANTING - TREE ENRICHMENT</p> <p>MS MASSED PLANTING - SWALE</p>	<p>TS TREES - FORESTRY GRADE</p> <p>TS TREES - SPECIMEN GRADE</p> <p>TP TREES - POLE GRADE</p> <p>^ TREE WIND SHELTER</p> <p>EXISTING VEGETATION TO BE RETAINED</p>	<p>GL GRASS - LOW</p> <p>GS GRASS - SWALE</p> <p>GR GRASS - ROUGH</p> <p>WP WETLAND PLANTING</p> <p>RP RIPARIAN PLANTING</p>
--	---	---	--

DESIGNATION

No.	Revision	By	Chk	Chk.V	Appd	Date
1	FOR CONSTRUCTION	MP				15.12.14

Original Scale (A1)	Design	Drawn	Date	Approved For Construction
1:500	F BAGGLEY	M. POWELL	11.08.14	
Reduced Scale (A3)	Design	Dwg. Checker	Date	
1:1000	B EVANS	C F-B	18.11.14	15.12.14

NZ TRANSPORT AGENCY
WAKA KOTAHU

MacKays to Peka Peka
Wellington Northern Corridor

Project: SH1 MACKAYS TO PEKA PEKA EXPRESSWAY
RP 1012/0.00 TO 1023/5.00

Title: LEINSTER AVE TO RAUMATI RD
PLANTING PLAN
SHEET 5

Drawing No: M2PP-33R-D-DWG-8205
Rev: 1