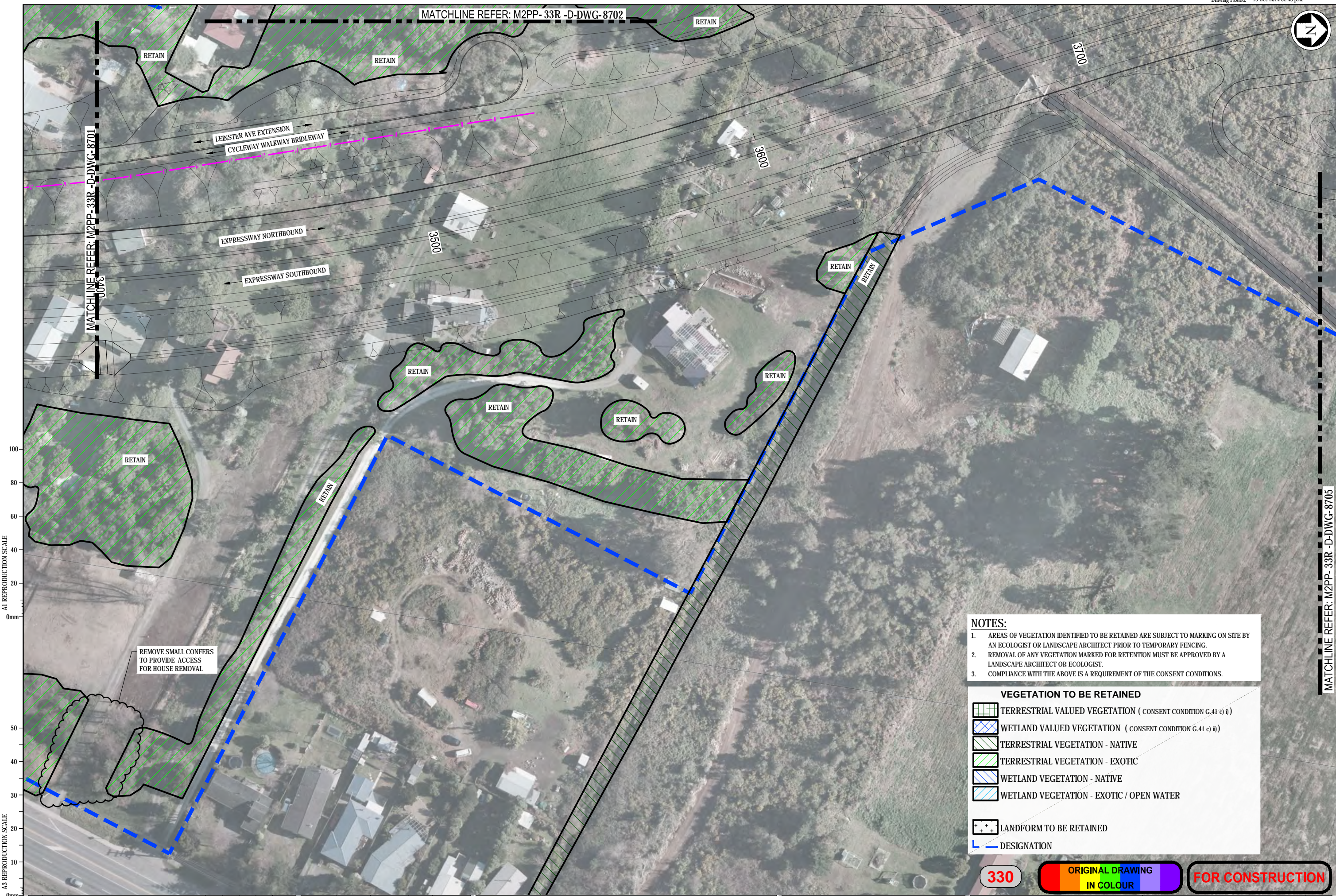


MATCHLINE REFER: M2PP-33R-D-DWG-8702



A1 REPRODUCTION SCALE

A3 REPRODUCTION SCALE

MATCHLINE REFER: M2PP-33R-D-DWG-8705

- NOTES:**
- AREAS OF VEGETATION IDENTIFIED TO BE RETAINED ARE SUBJECT TO MARKING ON SITE BY AN ECOLOGIST OR LANDSCAPE ARCHITECT PRIOR TO TEMPORARY FENCING.
  - REMOVAL OF ANY VEGETATION MARKED FOR RETENTION MUST BE APPROVED BY A LANDSCAPE ARCHITECT OR ECOLOGIST.
  - COMPLIANCE WITH THE ABOVE IS A REQUIREMENT OF THE CONSENT CONDITIONS.

**VEGETATION TO BE RETAINED**

	TERRESTRIAL VALUED VEGETATION ( CONSENT CONDITION G.41 c) i)
	WETLAND VALUED VEGETATION ( CONSENT CONDITION G.41 c) ii)
	TERRESTRIAL VEGETATION - NATIVE
	TERRESTRIAL VEGETATION - EXOTIC
	WETLAND VEGETATION - NATIVE
	WETLAND VEGETATION - EXOTIC / OPEN WATER
	LANDFORM TO BE RETAINED
	DESIGNATION

**330** ORIGINAL DRAWING IN COLOUR FOR CONSTRUCTION

No.	Revision	By	Chk	Chk-V	Appd	Date
2	FOR CONSTRUCTION - REVISED AS NOTED	MP				15.12.14
1	FOR CONSTRUCTION	MP	GFB	DH	SW	07.03.14

Original Scale (A1)	Design	Drawn	Checked	Approved For Construction
1:500	S. DUNN 09.12.13	M. POWELL 09.12.13	B. FAULKNER 07.03.14	P. BRADSHAW 07.03.14
Reduced Scale (A3)			C. F. B 07.03.14	Date 07.03.14

\* Refer to Revision 1 for Original Signature

**NZ TRANSPORT AGENCY** WAKA KOTAHĪ

**MacKays to Peka Peka**  
Wellington Northern Corridor

Project: SH1 MACKAYS TO PEKA PEKA EXPRESSWAY  
RP 1012/0.00 TO 1023/5.00

Title: LEINSTER AVE TO RAUMATI RD  
VEGETATION TO BE RETAINED  
SHEET 3

Document No. M2PP-33R-D-DWG-8705  
Drawing No. M2PP-33R-D-DWG-8703  
Rev. 2





**VEGETATION TO BE RETAINED**

- TERRESTRIAL VALUED VEGETATION ( CONSENT CONDITION G.41 c) i)
- WETLAND VALUED VEGETATION ( CONSENT CONDITION G.41 c) ii)
- TERRESTRIAL VEGETATION - NATIVE
- TERRESTRIAL VEGETATION - EXOTIC
- WETLAND VEGETATION - NATIVE
- WETLAND VEGETATION - EXOTIC / OPEN WATER

LANDFORM TO BE RETAINED

DESIGNATION

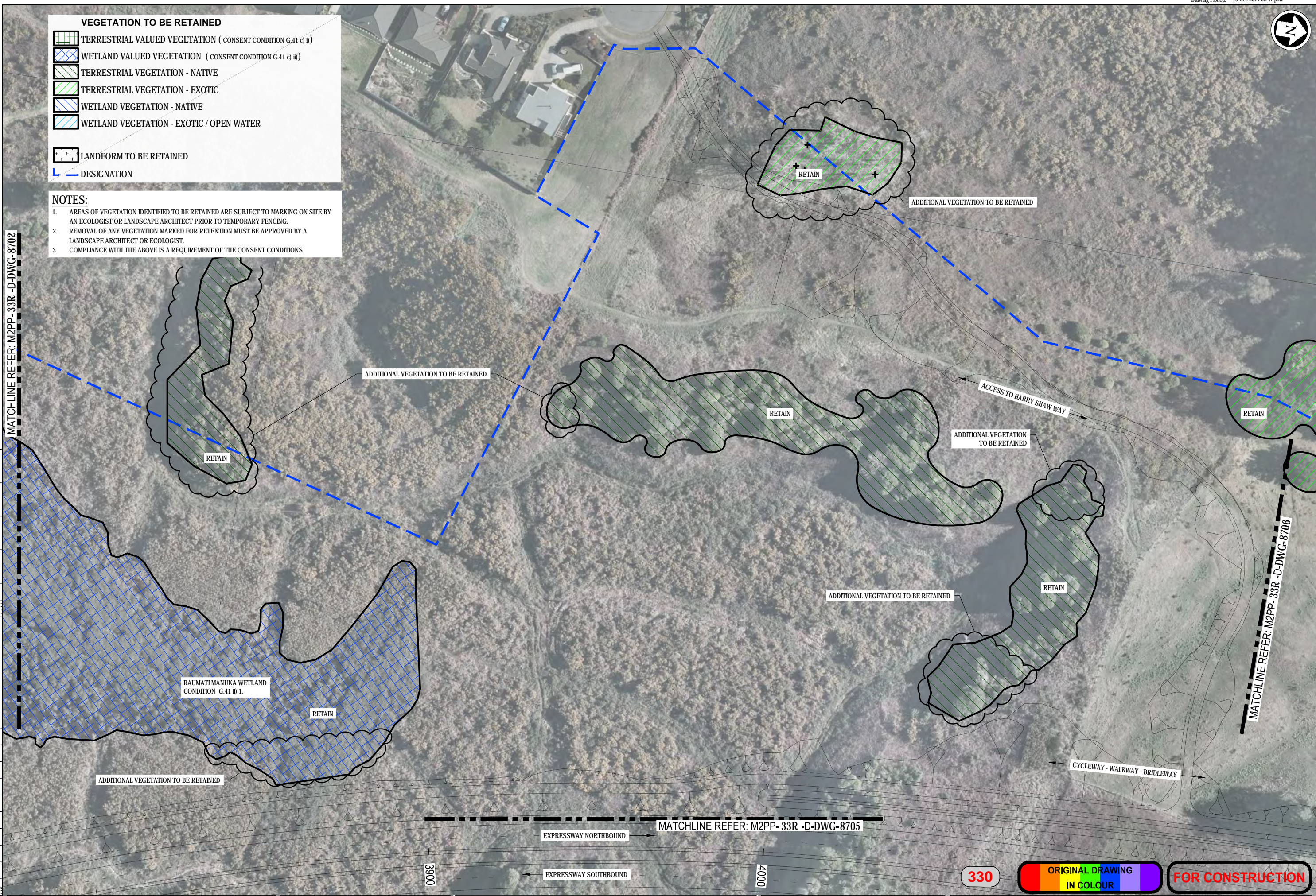
**NOTES:**

- AREAS OF VEGETATION IDENTIFIED TO BE RETAINED ARE SUBJECT TO MARKING ON SITE BY AN ECOLOGIST OR LANDSCAPE ARCHITECT PRIOR TO TEMPORARY FENCING.
- REMOVAL OF ANY VEGETATION MARKED FOR RETENTION MUST BE APPROVED BY A LANDSCAPE ARCHITECT OR ECOLOGIST.
- COMPLIANCE WITH THE ABOVE IS A REQUIREMENT OF THE CONSENT CONDITIONS.

MATCHLINE REFER: M2PP-33R-D-DWG-8702

A1 REPRODUCTION SCALE  
0mm 20 40 60 80 100

A3 REPRODUCTION SCALE  
0mm 10 20 30 40 50



No.	Revision	By	Chk	Chk-V	Appd	Date
2	FOR CONSTRUCTION - REVISED AS NOTED	MP				15.12.14
1	FOR CONSTRUCTION	MP	GFB	DH	SW	07.03.14

Original Scale (A1)	Design	S. DUNN	09.12.13	Approved For Construction
1:500	Drawn	M. POWELL	09.12.13	P. BRADSHAW
Reduced Scale (A3)	Dwg Verifier	B. FAULKNER	07.03.14	
1:1000	Dwg Check	C. F.B	07.03.14	Date 07.03.14

\* Refer to Revision 1 for Original Signature

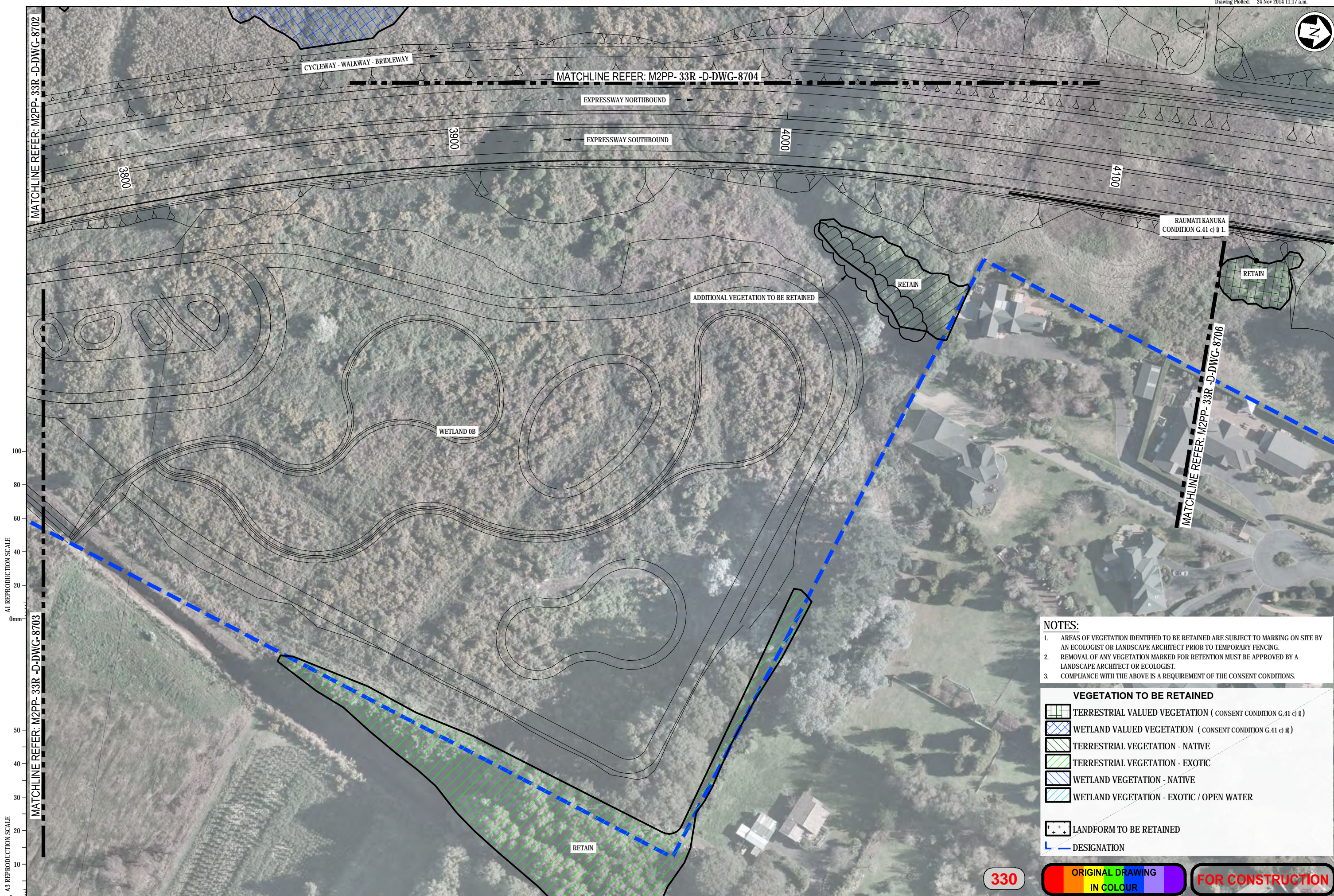
Project: SH1 MACKAYS TO PEKA PEKA EXPRESSWAY  
RP 1012/0.00 TO 1023/5.00

Title: LEINSTER AVE TO RAUMATI RD  
VEGETATION TO BE RETAINED  
SHEET 4

Drawing No: M2PP-33R-D-DWG-8704  
Rev: 2

**330** ORIGINAL DRAWING IN COLOUR FOR CONSTRUCTION





- NOTES:**
- AREAS OF VEGETATION IDENTIFIED TO BE RETAINED ARE SUBJECT TO MARKING ON SITE BY AN ECOLOGIST OR LANDSCAPE ARCHITECT PRIOR TO TEMPORARY FENCING.
  - REMOVAL OF ANY VEGETATION MARKED FOR RETENTION MUST BE APPROVED BY A LANDSCAPE ARCHITECT OR ECOLOGIST.
  - COMPLIANCE WITH THE ABOVE IS A REQUIREMENT OF THE CONSENT CONDITIONS.

**VEGETATION TO BE RETAINED**

- TERRESTRIAL VALUED VEGETATION ( CONSENT CONDITION G.41 c) ii)
- WETLAND VALUED VEGETATION ( CONSENT CONDITION G.41 c) iii)
- TERRESTRIAL VEGETATION - NATIVE
- TERRESTRIAL VEGETATION - EXOTIC
- WETLAND VEGETATION - NATIVE
- WETLAND VEGETATION - EXOTIC / OPEN WATER
- LANDFORM TO BE RETAINED
- DESIGNATION

**330 ORIGINAL DRAWING IN COLOUR FOR CONSTRUCTION**

No.	Revision	By	Chk	Chk-V	Appd	Date
1+	WORKING REVISION - REVISED AS NOTED	MP				
1	FOR CONSTRUCTION	MP	GFB	DH	SW	07.03.14

Original Scale (A1)	Design	Drawn	Checked	Approved For Construction
1:500	S. DUNN	M. POWELL	B. FAULKNER	P. BRADSHAW
Reduced Scale (A3)			C. F. B.	
1:1000				

\* Refer to Revision 1 for Original Signature

**NZ TRANSPORT AGENCY**  
WAKA KOTAHU

**MacKays to Peka Peka**  
Wellington Northern Corridor

Project: SH1 MACKAYS TO PEKA PEKA EXPRESSWAY  
RP 1012/0.00 TO 1023/5.00

Title: LEINSTER AVE TO RAUMATI RD  
VEGETATION TO BE RETAINED  
SHEET 5

Drawing No: M2PP-33R-D-DWG-8705  
Rev: 1+



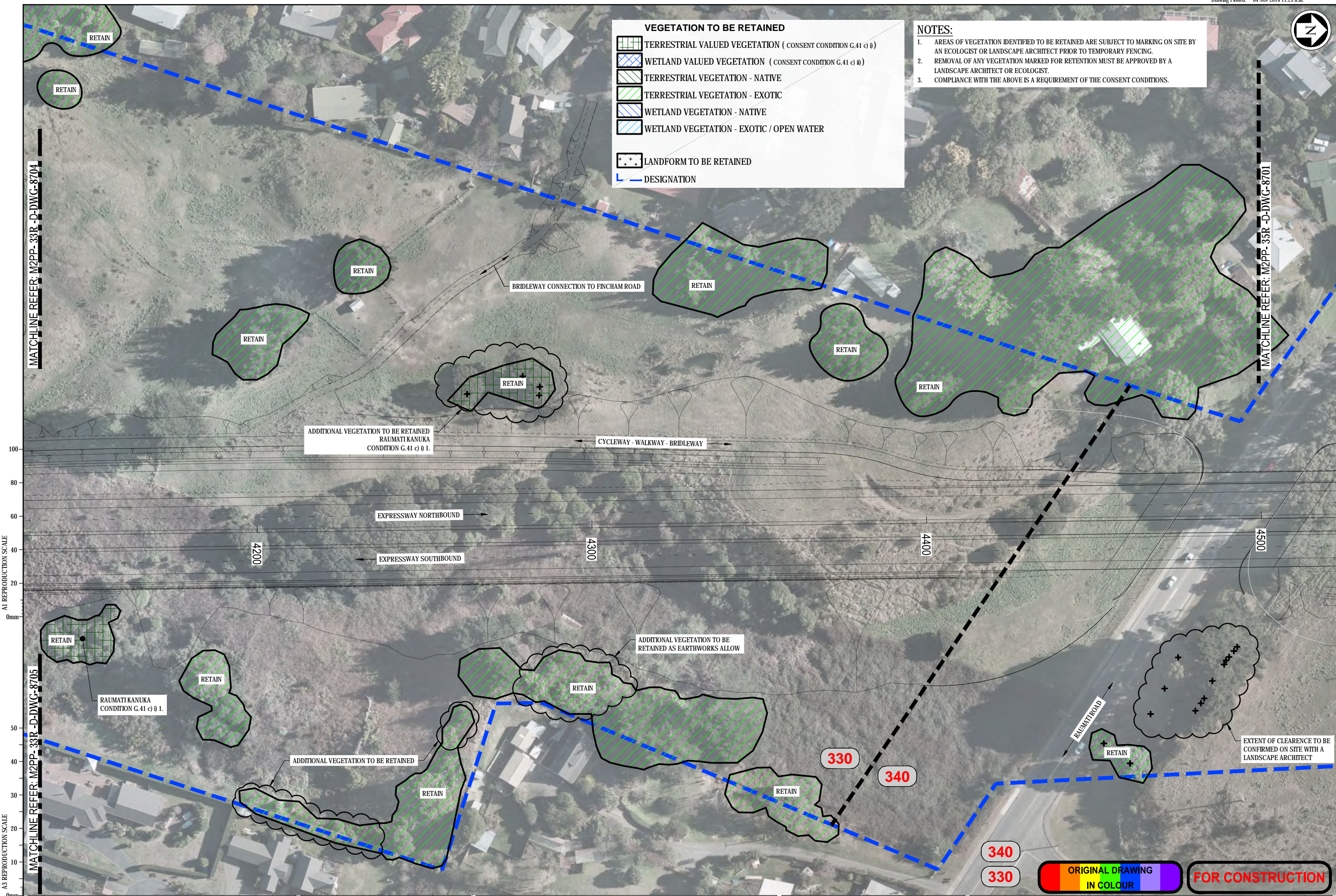


**VEGETATION TO BE RETAINED**

- TERRESTRIAL VALUED VEGETATION ( CONSENT CONDITION G.41 c) i)
- WETLAND VALUED VEGETATION ( CONSENT CONDITION G.41 c) ii)
- TERRESTRIAL VEGETATION - NATIVE
- TERRESTRIAL VEGETATION - EXOTIC
- WETLAND VEGETATION - NATIVE
- WETLAND VEGETATION - EXOTIC / OPEN WATER
- LANDFORM TO BE RETAINED
- DESIGNATION

**NOTES:**

1. AREAS OF VEGETATION IDENTIFIED TO BE RETAINED ARE SUBJECT TO MARKING ON SITE BY AN ECOLOGIST OR LANDSCAPE ARCHITECT PRIOR TO TEMPORARY FENCING.
2. REMOVAL OF ANY VEGETATION MARKED FOR RETENTION MUST BE APPROVED BY A LANDSCAPE ARCHITECT OR ECOLOGIST.
3. COMPLIANCE WITH THE ABOVE IS A REQUIREMENT OF THE CONSENT CONDITIONS.



No.	Revision	By	Chk	Chk-V	Appd	Date
3	FOR CONSTRUCTION - REVISED AS NOTED	MP	GFB	BF	DS	05.11.14
2	FOR KCDC CERTIFICATION - REVISED AS NOTED	MP	GFB	BF	DS	29.10.14
1	FOR CONSTRUCTION	MP	GFB	DH	SW	07.03.14

Original Scale (A1)	Design	S. DUNN	09.12.13	Approved For Construction
1:500	Drawn	M. POWELL	09.12.13	P. BRADSHAW
Reduced Scale (A3)	Dwg Verifier	B. FAULKNER	07.03.14	
1:1000	Dwg Check	C. F. B.	07.03.14	Date 07.03.14

**NZ TRANSPORT AGENCY**  
WAKA KOTAHU

**MacKays to Peka Peka**  
Wellington Northern Corridor

Project: SH1 MACKAYS TO PEKA PEKA EXPRESSWAY  
RP 1012/0.00 TO 1023/5.00

Title: LEINSTER AVE TO RAUMATI RD  
VEGETATION TO BE RETAINED  
SHEET 6

Drawing No: M2PP-33R-D-DWG-8706  
Rev: 3

ORIGINAL DRAWING IN COLOUR FOR CONSTRUCTION



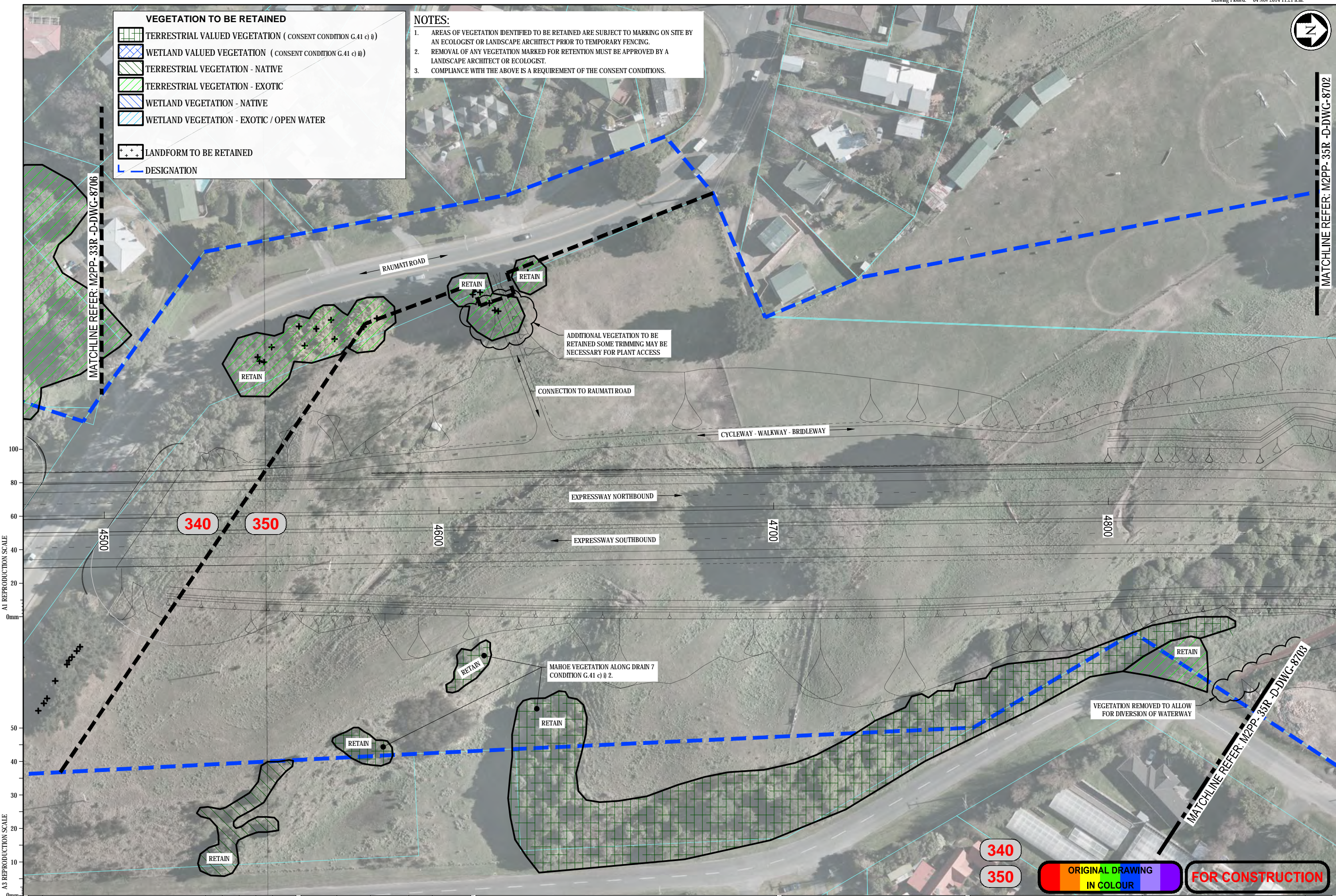


**VEGETATION TO BE RETAINED**

	TERRESTRIAL VALUED VEGETATION ( CONSENT CONDITION G.41 c) i)
	WETLAND VALUED VEGETATION ( CONSENT CONDITION G.41 c) ii)
	TERRESTRIAL VEGETATION - NATIVE
	TERRESTRIAL VEGETATION - EXOTIC
	WETLAND VEGETATION - NATIVE
	WETLAND VEGETATION - EXOTIC / OPEN WATER
	LANDFORM TO BE RETAINED
	DESIGNATION

**NOTES:**

1. AREAS OF VEGETATION IDENTIFIED TO BE RETAINED ARE SUBJECT TO MARKING ON SITE BY AN ECOLOGIST OR LANDSCAPE ARCHITECT PRIOR TO TEMPORARY FENCING.
2. REMOVAL OF ANY VEGETATION MARKED FOR RETENTION MUST BE APPROVED BY A LANDSCAPE ARCHITECT OR ECOLOGIST.
3. COMPLIANCE WITH THE ABOVE IS A REQUIREMENT OF THE CONSENT CONDITIONS.



A1 REPRODUCTION SCALE  
0mm 20 40 60 80 100

A3 REPRODUCTION SCALE  
0mm 10 20 30 40 50

MATCHLINE REFER: M2PP-33R-D-DWG-8706

MATCHLINE REFER: M2PP-35R-D-DWG-8702

MATCHLINE REFER: M2PP-33R-D-DWG-8703

No.	Revision	By	Chk	Chk-V	Appd	Date
3	FOR CONSTRUCTION - REVISED AS NOTED	MP	GFB	BF	DS	05.11.14
2	FOR KCDC CERTIFICATION - REVISED AS NOTED	MP	GFB	BF	DS	29.10.14
1	FOR CONSTRUCTION - WEED CLEARANCE	MP	GFB	DH	DS	17.03.14

Original Scale (A1)	Design	Drawn	Checked	Approved For Construction
1:500	S DUNN 09.12.13	M POWELL 09.12.13	B FAULKNER 17.03.14	P BRADSHAW 17.03.14
Reduced Scale (A3)	1:1000	C. F. B. 17.03.14		Date 19.03.14

**NZ TRANSPORT AGENCY** WAKA KOTAHU

**MacKays to Peka Peka**  
Wellington Northern Corridor

Project: SH1 MACKAYS TO PEKA PEKA EXPRESSWAY  
RP 1012/0.00 TO 1023/5.00

Title: RAUMATI RD TO WHAREMAKAU VEGETATION TO BE RETAINED SHEET 1

Drawing No: M2PP-35R-D-DWG-8701  
Rev: 3

ORIGINAL DRAWING IN COLOUR FOR CONSTRUCTION



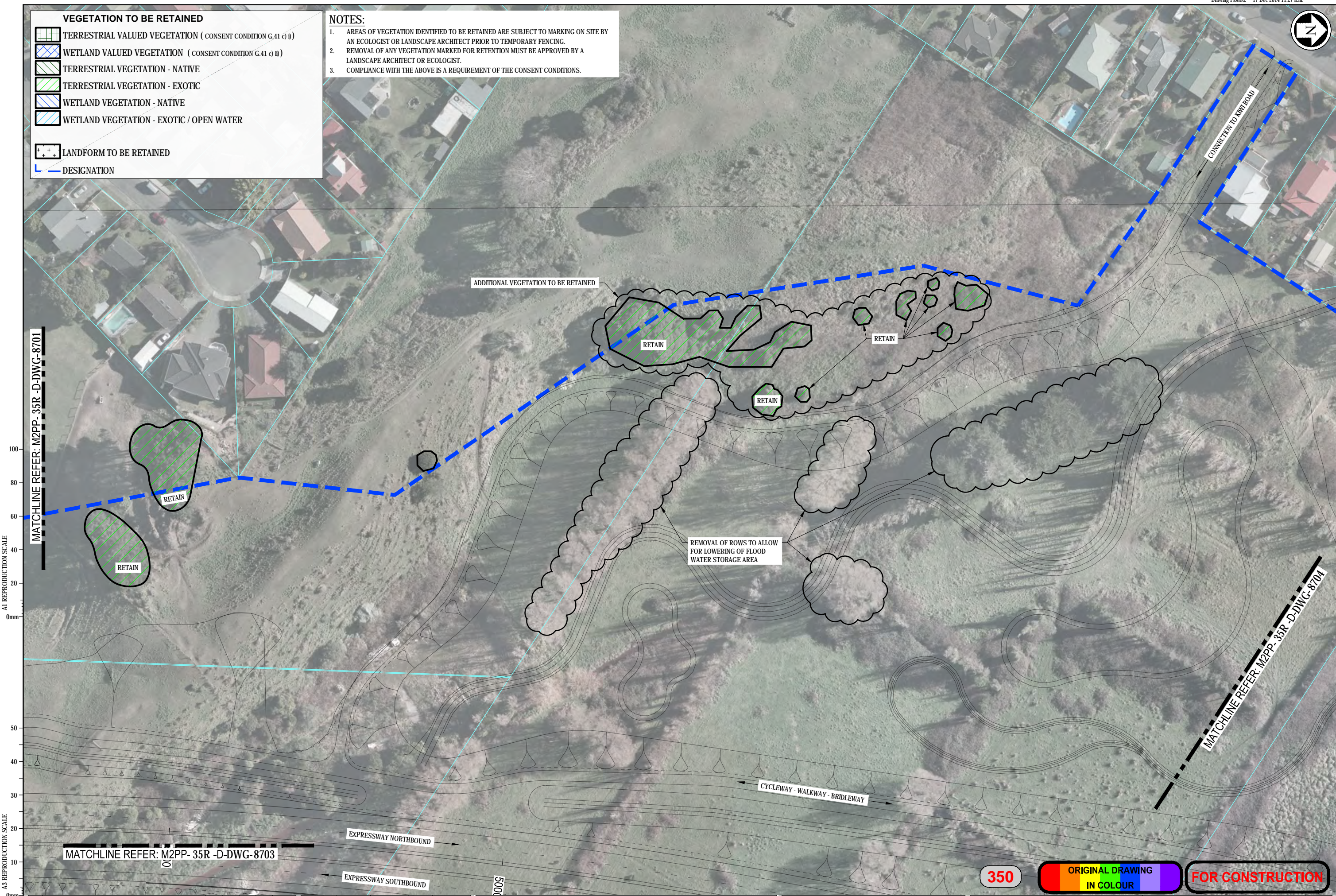


**VEGETATION TO BE RETAINED**

- TERRESTRIAL VALUED VEGETATION ( CONSENT CONDITION G.41 c) i)
- WETLAND VALUED VEGETATION ( CONSENT CONDITION G.41 c) ii)
- TERRESTRIAL VEGETATION - NATIVE
- TERRESTRIAL VEGETATION - EXOTIC
- WETLAND VEGETATION - NATIVE
- WETLAND VEGETATION - EXOTIC / OPEN WATER
- LANDFORM TO BE RETAINED
- DESIGNATION

**NOTES:**

1. AREAS OF VEGETATION IDENTIFIED TO BE RETAINED ARE SUBJECT TO MARKING ON SITE BY AN ECOLOGIST OR LANDSCAPE ARCHITECT PRIOR TO TEMPORARY FENCING.
2. REMOVAL OF ANY VEGETATION MARKED FOR RETENTION MUST BE APPROVED BY A LANDSCAPE ARCHITECT OR ECOLOGIST.
3. COMPLIANCE WITH THE ABOVE IS A REQUIREMENT OF THE CONSENT CONDITIONS.



A1 REPRODUCTION SCALE  
MATCHLINE REFER: M2PP-35R-D-DWG-8701

A3 REPRODUCTION SCALE  
MATCHLINE REFER: M2PP-35R-D-DWG-8703

MATCHLINE REFER: M2PP-35R-D-DWG-8704

No.	Revision	By	Chk	Chk-V	Appd	Date
3	FOR CONSTRUCTION - REVISED AS NOTED	MP	GFB	BF	DS	05.11.14
2	FOR KDC CERTIFICATION - REVISED AS NOTED	MP	GFB	BF	DS	29.10.14
1	FOR CONSTRUCTION - WEED CLEARANCE	MP	GFB	DH	DS	17.03.14

Original Scale (A1)	Design	Date	Approved For Construction
1:500	S DUNN	09.12.13	M POWELL
Reduced Scale (A3)	Dwg Verifier	09.12.13	B. FAULKNER
1:1000	Dwg Check	17.03.14	C. F. B



**MacKays to Peka Peka**  
Wellington Northern Corridor

Project: SH1 MACKAYS TO PEKA PEKA EXPRESSWAY  
RP 1012/0.00 TO 1023/5.00

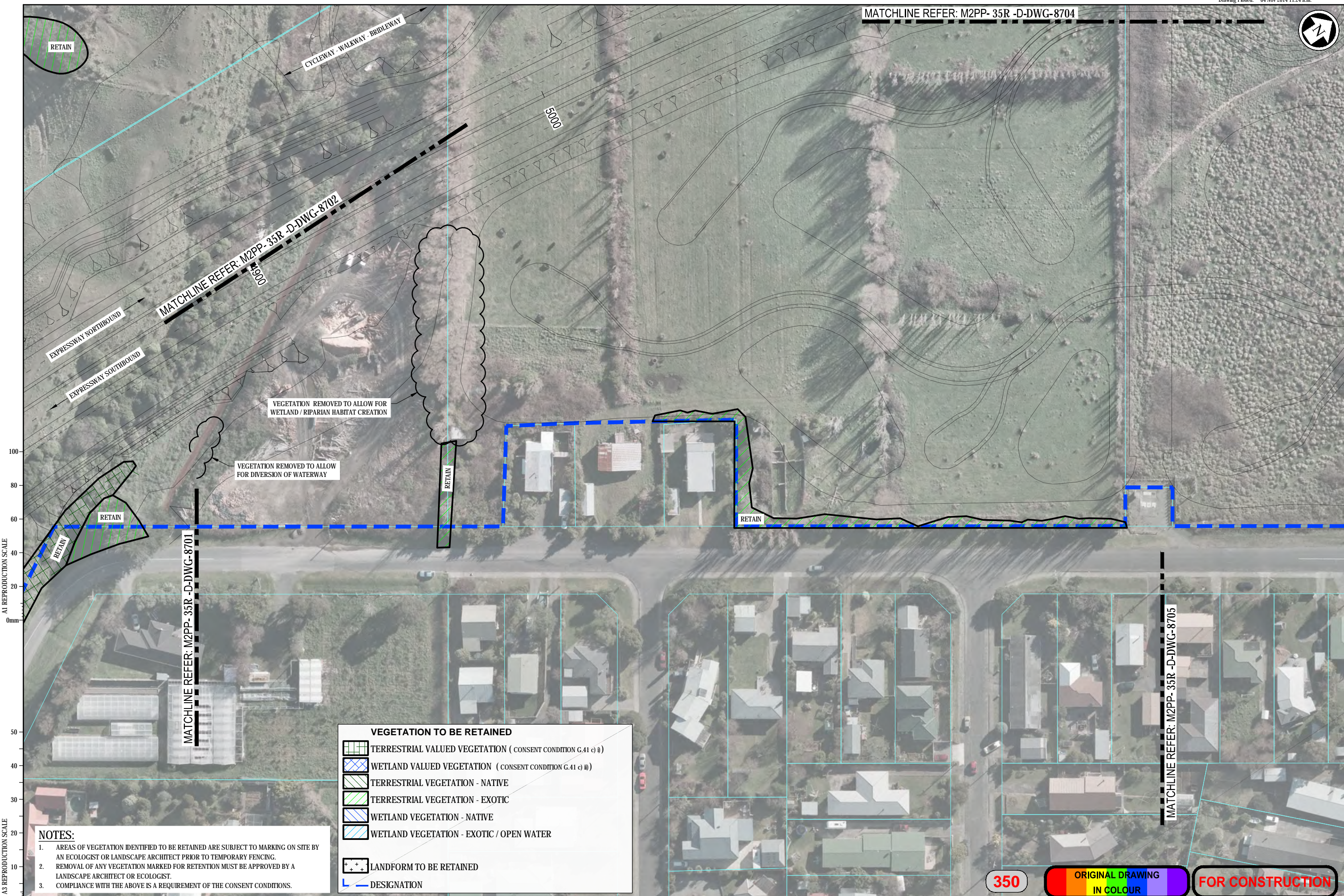
Title: RAUMATI RD TO WHAREMAKAU VEGETATION TO BE RETAINED SHEET 2

Drawing No: M2PP-35R-D-DWG-8702  
Rev: 3

350 ORIGINAL DRAWING IN COLOUR FOR CONSTRUCTION



MATCHLINE REFER: M2PP-35R-D-DWG-8704



A1 REPRODUCTION SCALE  
0mm 20 40 60 80 100

A3 REPRODUCTION SCALE  
0mm 10 20 30 40 50

**NOTES:**

- AREAS OF VEGETATION IDENTIFIED TO BE RETAINED ARE SUBJECT TO MARKING ON SITE BY AN ECOLOGIST OR LANDSCAPE ARCHITECT PRIOR TO TEMPORARY FENCING.
- REMOVAL OF ANY VEGETATION MARKED FOR RETENTION MUST BE APPROVED BY A LANDSCAPE ARCHITECT OR ECOLOGIST.
- COMPLIANCE WITH THE ABOVE IS A REQUIREMENT OF THE CONSENT CONDITIONS.

**VEGETATION TO BE RETAINED**

- TERRESTRIAL VALUED VEGETATION ( CONSENT CONDITION G.41 (c) (i) )
- WETLAND VALUED VEGETATION ( CONSENT CONDITION G.41 (c) (ii) )
- TERRESTRIAL VEGETATION - NATIVE
- TERRESTRIAL VEGETATION - EXOTIC
- WETLAND VEGETATION - NATIVE
- WETLAND VEGETATION - EXOTIC / OPEN WATER
- LANDFORM TO BE RETAINED
- DESIGNATION

No.	Revision	By	Chk	Chk-V	Appd	Date
3	FOR CONSTRUCTION - REVISED AS NOTED	MP	GFB	BF	DS	05.11.14
2	FOR KCDC CERTIFICATION - REVISED AS NOTED	MP	GFB	BF	DS	29.10.14
1	FOR CONSTRUCTION - WEED CLEARANCE	MP	GFB	DH	DS	17.03.14

Original Scale (A1)	Design	Drawn	Checked	Approved For Construction
1:500	S DUNN 09.12.13	M POWELL 09.12.13	B. FAULKNER 17.03.14	P. BRADSHAW
Reduced Scale (A3)			C. F.B 17.03.14	Date 19.03.14

\* Refer to Revision 1 for Original Signature

**NZ TRANSPORT AGENCY**  
WAKA KOTAHĪ

**MacKays to Peka Peka**  
Wellington Northern Corridor

Project: SH1 MACKAYS TO PEKA PEKA EXPRESSWAY  
RP 1012/0.00 TO 1023/5.00

Title: RAUMATI RD TO WHAREMAKAU VEGETATION TO BE RETAINED SHEET 3

Drawing No: M2PP-35R-D-DWG-8703

Rev. 3

350 ORIGINAL DRAWING IN COLOUR FOR CONSTRUCTION