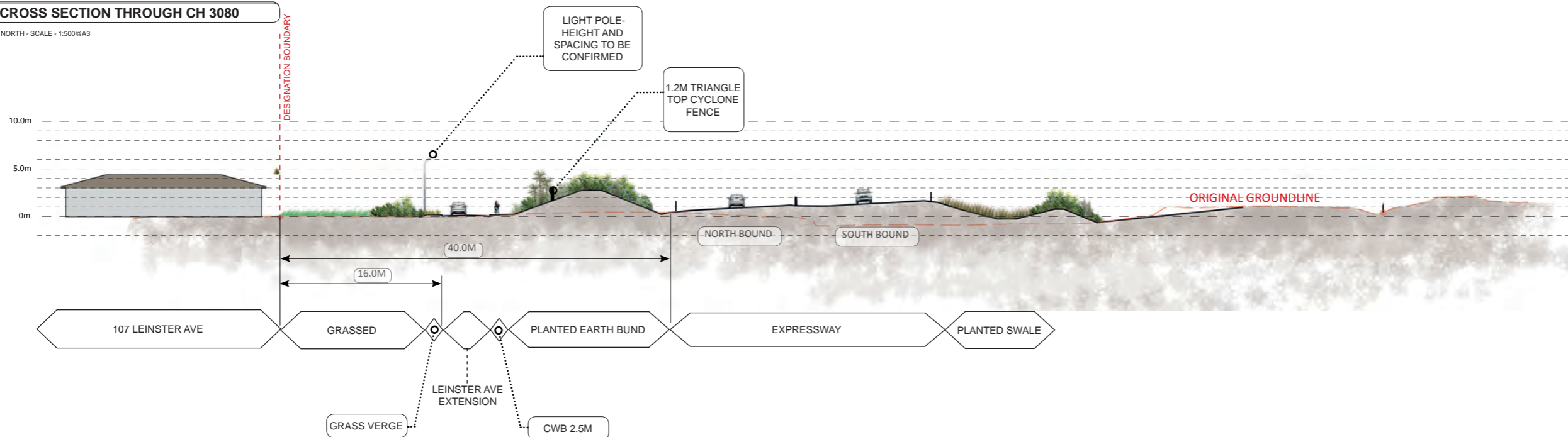


**CS1 - CROSS SECTION THROUGH CH 3080**

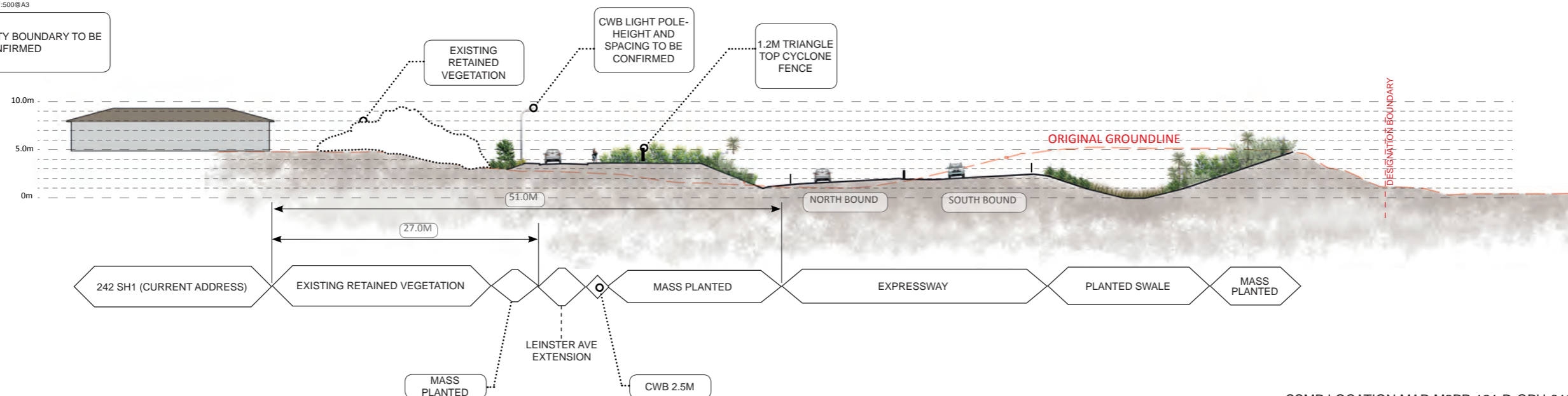
FACING NORTH - SCALE - 1:500@A3



**CS2 - CROSS SECTION THROUGH CH 3440**

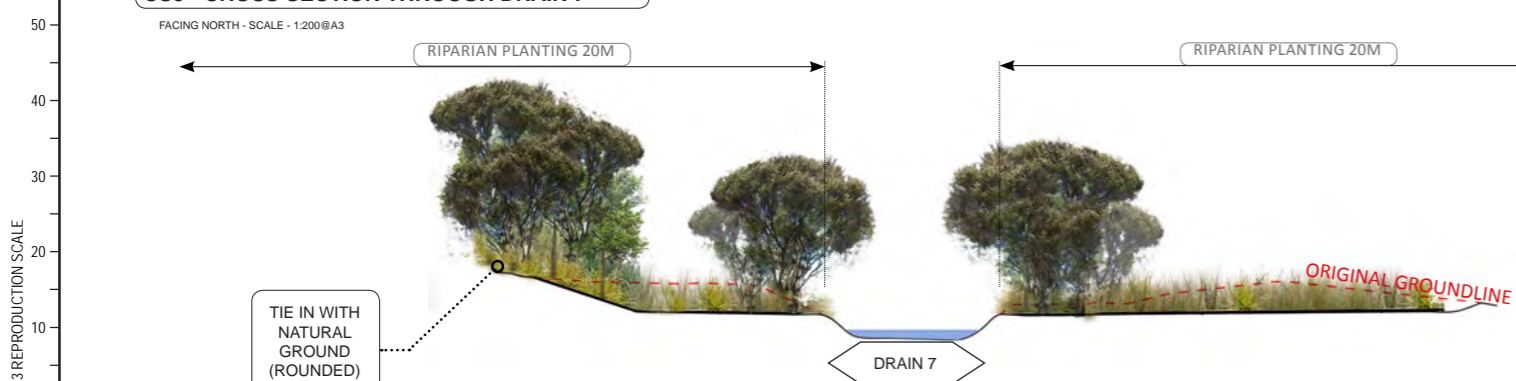
FACING NORTH - SCALE - 1:500@A3

NOTE: PROPERTY BOUNDARY TO BE CONFIRMED



**CS3 - CROSS SECTION THROUGH DRAIN 7**

FACING NORTH - SCALE - 1:200@A3



SSMP LOCATION MAP-M2PP-121-D-GPH-8101



C	CERTIFIED ISSUE	VB			17/12/14
No.	Revision	By	Chk	Appd	Date

Original Scale (A1)	Design Drawn	Approved For Construction?
AS SHOWN	Drawn	Date
Reduced Scale (A3)	Design Check	
AS SHOWN	Refer to Revision 1 for Original Signature	



Project: SH1 MACKAYS TO PEKA PEKA EXPRESSWAY  
RP 1012/0.00 TO 1023/5.00

Title: SSMP 2[330-340-350] - SHEET 6 SECTIONS

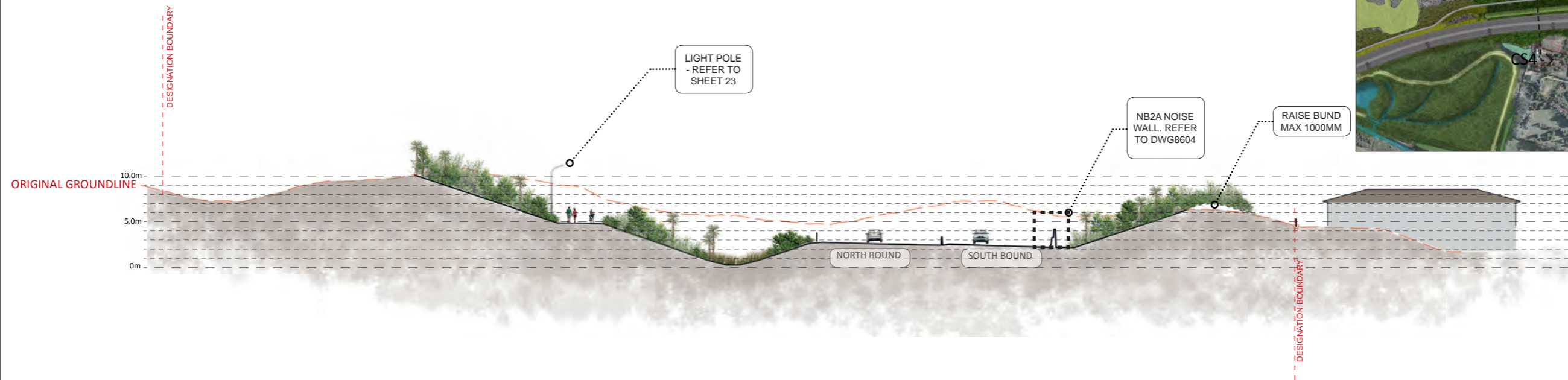
Drawing No: M2PP-121-D-DWG-8501

Rev: C

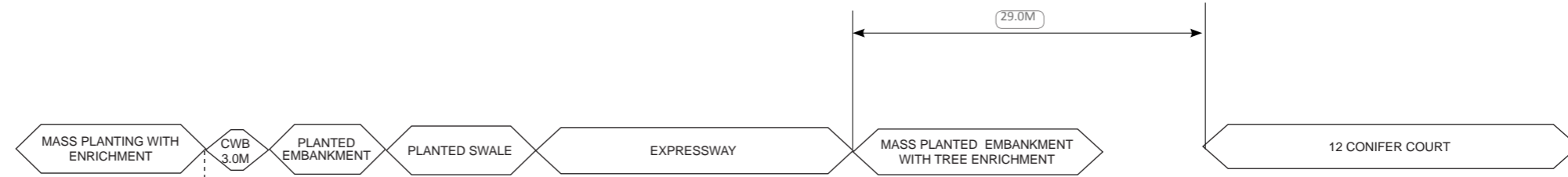


**CS4 - CROSS SECTION THROUGH CH 4080**

FACING NORTH - SCALE - 1:500 @A3

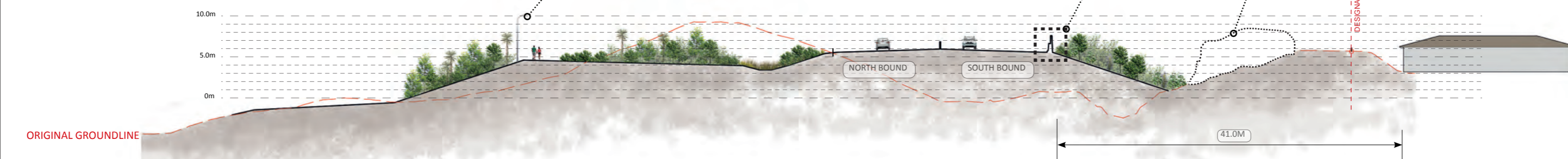


SSMP LOCATION MAP-M2PP-121-D-GPH-8102



**CS5 - CROSS SECTION THROUGH CH 4280**

FACING NORTH - SCALE - 1:500 @A3



SSMP LOCATION MAP-M2PP-121-D-GPH-8102



A1 REPRODUCTION SCALE

A3 REPRODUCTION SCALE

DETAIL DESIGN (DET)

No.	Revision	By	Chk	Chk.V	Appd	Date
C	CERTIFIED ISSUE	VB				17/12/14

Original Scale (A1)	Design	Approved For Construction?
AS SHOWN	Drawn	Date
Ridroad	Design Verifier	
Scale (A3)	Design Check	
AS SHOWN		



Project: SH1 MACKAYS TO PEKA PEKA EXPRESSWAY  
RP 1012/0.00 TO 1023/5.00

Title: SSMP 2[330-340-350] - SHEET 7 SECTIONS

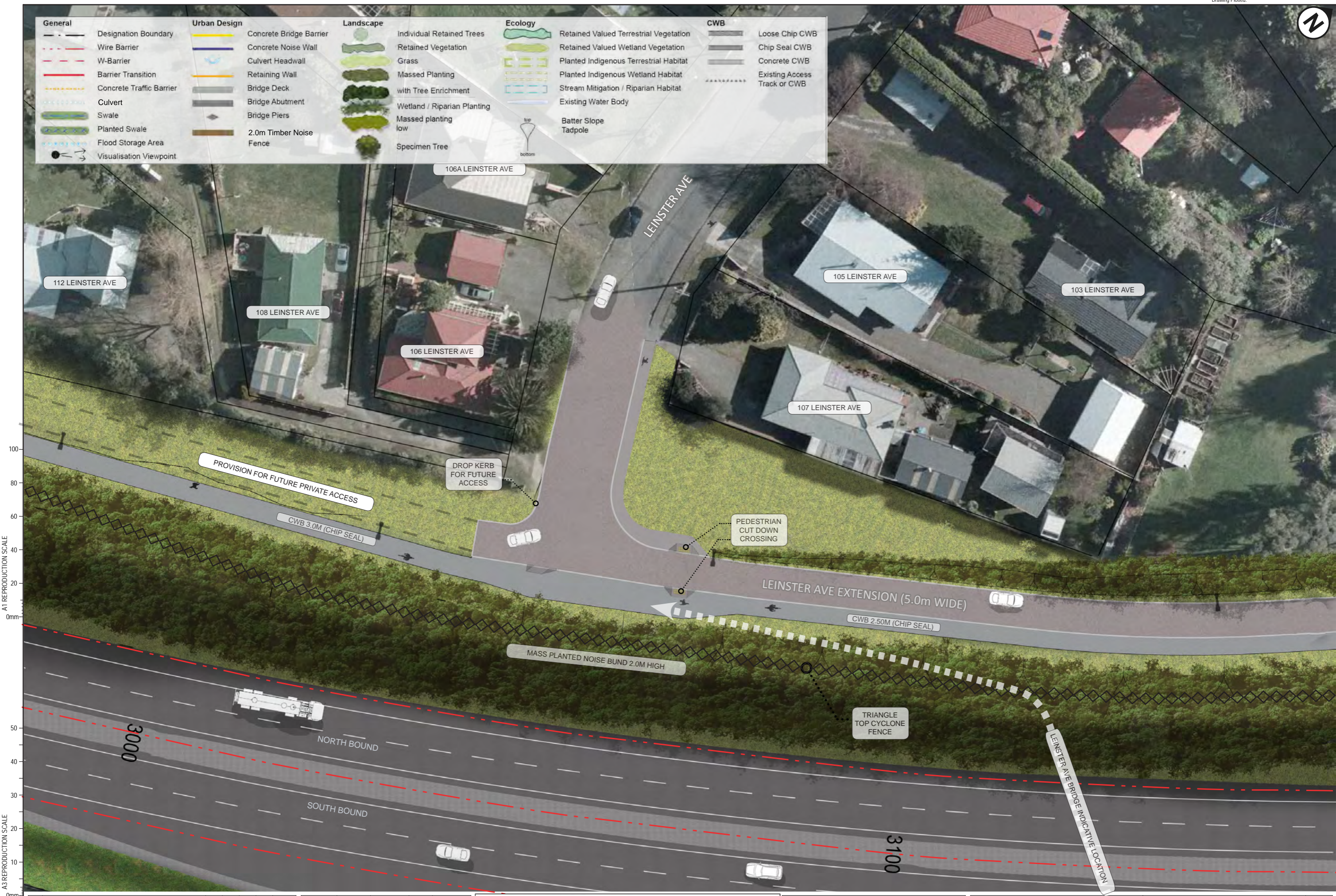
Drawing No: M2PP-121-D-DWG-8502

Rev: C





General	Urban Design	Landscape	Ecology	CWB
Designation Boundary	Concrete Bridge Barrier	Individual Retained Trees	Retained Valued Terrestrial Vegetation	Loose Chip CWB
Wire Barrier	Concrete Noise Wall	Retained Vegetation	Retained Valued Wetland Vegetation	Chip Seal CWB
W-Barrier	Culvert Headwall	Grass	Planted Indigenous Terrestrial Habitat	Concrete CWB
Barrier Transition	Retaining Wall	Massed Planting	Planted Indigenous Wetland Habitat	Existing Access Track or CWB
Concrete Traffic Barrier	Bridge Deck	with Tree Enrichment	Stream Mitigation / Riparian Habitat	
Culvert	Bridge Abutment	Wetland / Riparian Planting	Existing Water Body	
Swale	Bridge Piers	Massed planting low	Batter Slope	
Planted Swale	2.0m Timber Noise Fence	Specimen Tree	Tadpole	
Flood Storage Area				
Visualisation Viewpoint				



A1 REPRODUCTION SCALE  
0mm

A3 REPRODUCTION SCALE  
0mm

DETAIL DESIGN (DET)

No.	Revision	By	Chk	Chk.V	Appd	Date
C	CERTIFIED ISSUE	VB				17/12/14

Original Scale (A1)	Design	Approved For Construction?
1:250	Drawn	
Reduced Scale (A3)	Drawn Verifier	Date
1:500	Design Check	



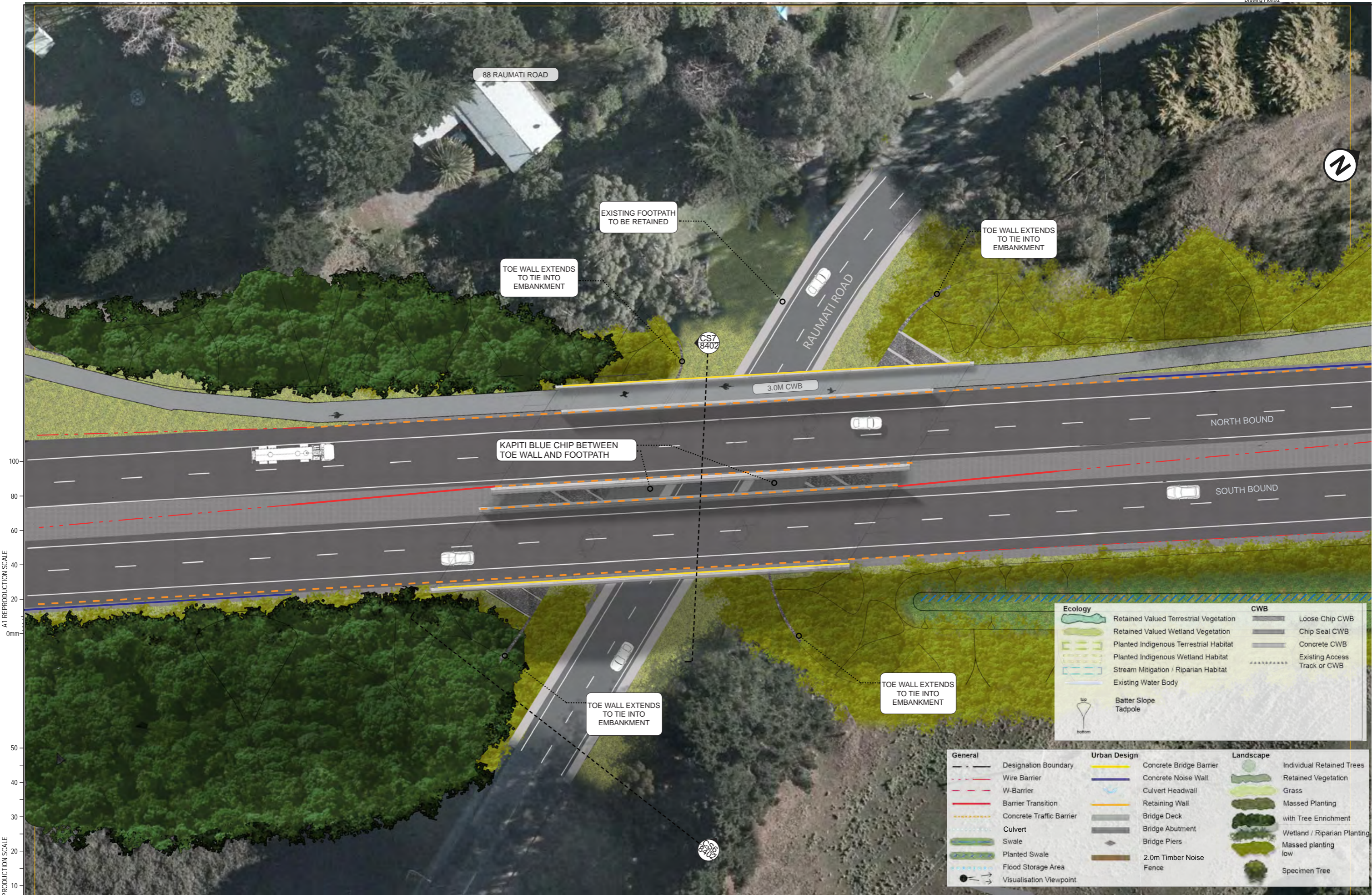
Project SH1 MACKAYS TO PEKA PEKA EXPRESSWAY  
RP 1012/0.00 TO 1023/5.00

Title: SSMP 2[330-340-350] - SHEET 8  
LEINSTER EXTENSION

Drawing No: M2PP-121-D-DWG-8302

Rev. C





A1 REPRODUCTION SCALE

A3 REPRODUCTION SCALE

Ecology		CWB	
	Retained Valued Terrestrial Vegetation		Loose Chip CWB
	Retained Valued Wetland Vegetation		Chip Seal CWB
	Planted Indigenous Terrestrial Habitat		Concrete CWB
	Planted Indigenous Wetland Habitat		Existing Access Track or CWB
	Stream Mitigation / Riparian Habitat		
	Existing Water Body		
	Batter Slope		
	Tadpole		

General	Urban Design	Landscape	
	Designation Boundary		Individual Retained Trees
	Wire Barrier		Retained Vegetation
	W-Barrier		Grass
	Barrier Transition		Massed Planting
	Concrete Traffic Barrier		with Tree Enrichment
	Culvert		Wetland / Riparian Planting
	Swale		Massed planting low
	Planted Swale		Specimen Tree
	Flood Storage Area		
	Visualisation Viewpoint		
		Concrete Bridge Barrier	
		Concrete Noise Wall	
		Culvert Headwall	
		Retaining Wall	
		Bridge Deck	
		Bridge Abutment	
		Bridge Piers	
		2.0m Timber Noise Fence	

No.	Revision	By	Chk	Chk.V	Appd	Date
C	CERTIFIED ISSUE	VB				17/12/14

Original Scale (A1)	Design	Approved For Construction
1:250	Drawn	
Reduced Scale (A3)	Design Verifier	
1:500	Design Check	
	Date	

**NZ TRANSPORT AGENCY**  
WAKA KOTAHI

**MacKays to Peka Peka**  
Wellington Northern Corridor

Project: SH1 MACKAYS TO PEKA PEKA EXPRESSWAY  
RP 1012/0.00 TO 1023/5.00

Title: SSMP 2[330-340-350] - SHEET 9  
BRIDGE MASTERPLAN

Drawing No: M2PP-121-D-DWG-8301  
Rev: C

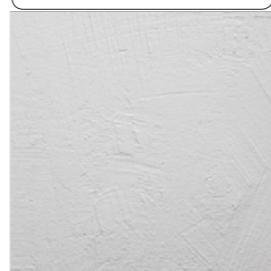
DETAIL DESIGN (DET)



**CS6- CROSS SECTIONAL ELEVATION- RAUMATI BRIDGE**

FACING EAST SCALE - 1:250@A3

**MATERIAL A**



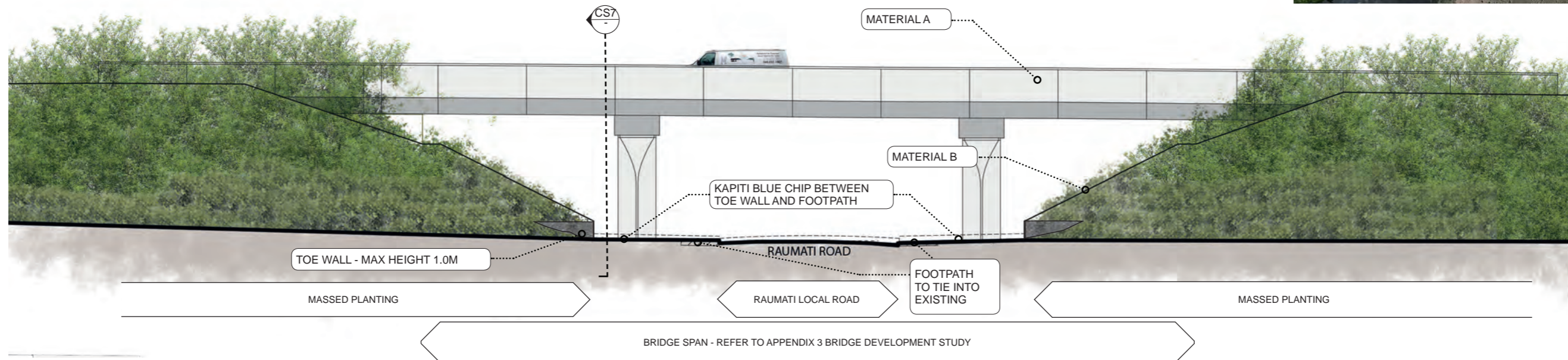
BRIDGE BARRIER:  
PRECAST  
CONCRETE WITH  
2 COATS WHITE  
KIEM COATING &  
ANTI GRAFFITI  
PROTECTION-  
PENDING SAMPLE  
PANEL APPROVAL

**MATERIAL B**



BRIDGE ABUTMENT:  
PRECAST  
CONCRETE PANEL  
WITH INLAID OTAKI  
PEB 20MM STONE  
AND MATT GRAFFITI  
PROTECTION-  
PENDING SAMPLE  
PANEL APPROVAL

SITE CONTEXT PLAN-M2PP-121-D-GPH-8301



**CS7-CROSS SECTIONAL ELEVATION-ABUTMENT**

FACING SOUTH SCALE - 1:200@A3

**MATERIAL A**

**MATERIAL B**

2.6M EXPOSED AGGREGATE PANELS

300MM WIDE CONCRETE STITCH

1.0M

SOUTHBOUND EXPRESSWAY

NORTHBOUND EXPRESSWAY

CWB

TO WALL EXTENDS TO TIE INTO EMBANKMENT

BRIDGE SPILL THROUGH ABUTMENT & TOE WALL

TO WALL EXTENDS TO TIE INTO EMBANKMENT

A1 REPRODUCTION SCALE

A3 REPRODUCTION SCALE

No.	Revision	By	Chk	Chk.V	Appd	Date
C	CERTIFIED ISSUE	VB				17/12/14

Original Scale (A1)	Design	Approved For Construction?
AS SHOWN	Drawn	Date
Reduced Scale (A3)	Design Verifier	
AS SHOWN	Design Check	

\* Refer to Revision 1 for Original Signature



**MacKays to Peka Peka**  
Wellington Northern Corridor

Project: SH1 MACKAYS TO PEKA PEKA EXPRESSWAY  
RP 1012/0.00 TO 1023/5.00

Sheet: SSMP 2[330-340-350]- SHEET 10  
BRIDGE ELEVATIONS

Drawing No: M2PP-121-D-DWG-8402

Rev. C



VISUALISATION CONTEXT



A1 REPRODUCTION SCALE  
0mm 20 40 60 80 100

VISUALISATION - RAUMATI BRIDGE (EAST SIDE OF BRIDGE LOOKING WEST FROM RAUMATI ROAD)

A3 REPRODUCTION SCALE  
0mm 10 20 30 40 50

No.	Revision	By	Chk	Chk.V	Appd	Date
C	CERTIFIED ISSUE	VB				17/12/14

Original Scale (A1)	Design	Approved For Construction*
AS SHOWN	Drawn	Date
Reduced Scale (A3)	Design Verifier	
AS SHOWN	Design Check	

\* Refer to Revision 1 for Original Signature

Project: SH1 MACKAYS TO PEKA PEKA EXPRESSWAY  
RP 1012/0.00 TO 1023/5.00

Title: SSMP 2[330-340-350] - SHEET 11  
RAUMATI ROAD

Drawing No: M2PP-121-D-DWG-8801

Rev. C

DETAIL DESIGN (DET)