

M2PP-121-D-PLNM-0002

Appendix 1: DRAWING SET

Site Specific Management Plan 002 - [sector 330-340-350]  
MacKays to Peka Peka Expressway

17 DECEMBER 2014 - REV C - CERTIFIED ISSUE



SSMP#	SECTOR	NAME	NOTES
SSMP1	310/320	RAUMATI SOUTH	
SSMP2	330/340/350	RAUMATI NORTH	
SSMP3	360/370/380	WHAREMAUKU BASIN	
SSMP4	410/420	KAPITI MAZENGARB	
SSMP5&6	430/440/460	OTAIHANGA NORTH&SOUTH	
SSMP7	470	WAIKANA E RIVER	
SSMP8	480/510	TE MOANA	
SSMP9	520	NGARARA	
SSMP10	530/540/550/580	PEKA PEKA SOUTH	ISSUED IN TWO PARTS: -SSMP10-550 -SSMP10-530/540/580
SSMP11	560/570	PEKA PEKA NORTH	



LEGEND	
	ROAD
	SSMP SHEET (ROAD)
	SSMP SHEET (BRIDGE)
	PARCEL BOUNDARIES
	SSMP BOUNDARY
	CURRENT SSMP SHEET (ROAD)
	CURRENT SSMP SHEET (BRIDGE)
	CONSTRUCTION BOUNDARY

A1 REPRODUCTION SCALE  
0mm

A3 REPRODUCTION SCALE  
0mm

No.	Revision	By	Chk	Chk.V	Appd	Date
C	CERTIFIED ISSUE	VB				17/12/14

Original Scale (A1)	Design Drawn	Approved For Construction
1:25,000		22/08/14
Reduced Scale (A3)	Design Check	Date
1:50,000		

\* Refer to Revision 1 for Original Signature



Project	SH1 MACKAYS TO PEKA PEKA EXPRESSWAY RP 1012/0.00 TO 1023/5.00
---------	--

Title	SSMP 2 [330-340-350] - SHEET 1 LOCATION PLAN
-------	---

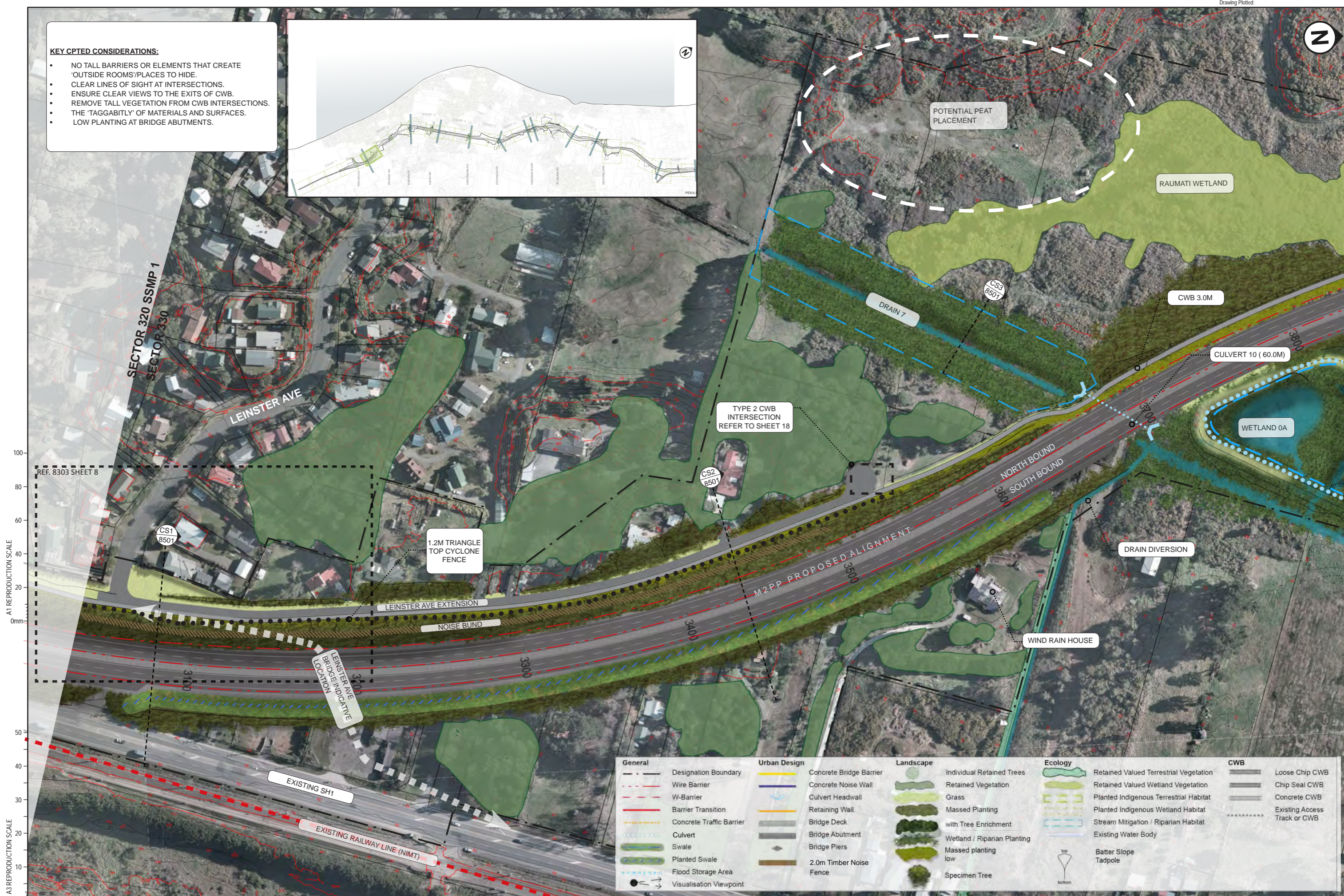
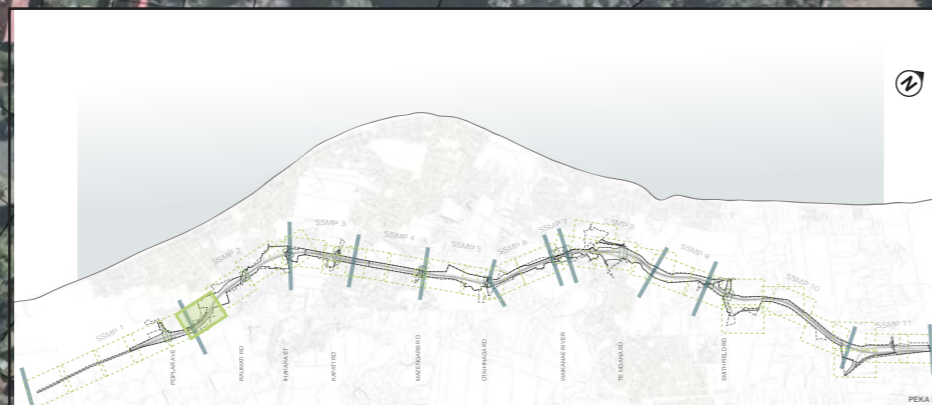
Drawing No.	M2PP-121-D-DWG-8001
Rev.	C

DETAIL DESIGN (DET)



KEY CPTED CONSIDERATIONS:

- NO TALL BARRIERS OR ELEMENTS THAT CREATE 'OUTSIDE ROOMS'/PLACES TO HIDE.
- CLEAR LINES OF SIGHT AT INTERSECTIONS.
- ENSURE CLEAR VIEWS TO THE EXITS OF CWB.
- REMOVE TALL VEGETATION FROM CWB INTERSECTIONS.
- THE 'TAGGABILITY' OF MATERIALS AND SURFACES.
- LOW PLANTING AT BRIDGE ABUTMENTS.



A1 REPRODUCTION SCALE  
0mm 20 40 60 80 100

A3 REPRODUCTION SCALE  
0mm 10 20 30 40 50

REF. 8303 SHEET 8

SECTOR 320 SSMP 1  
SECTOR 330

LEINSTER AVE

CS1  
8501

1.2M TRIANGLE  
TOP CYCLONE  
FENCE

LEINSTER AVE EXTENSION

NOISE BUND

LEINSTER AVE  
BRIDGE INDICATIVE  
LOCATION

EXISTING SH1

EXISTING RAILWAY LINE (NIMT)

TYPE 2 CWB  
INTERSECTION  
REFER TO SHEET 18

CS2  
8501

POTENTIAL PEAT  
PLACEMENT

DRAIN 7

CWB 3.0M

CULVERT 10 ( 60.0M)

WETLAND 0A

NORTH BOUND  
3640  
SOUTH BOUND  
3640

DRAIN DIVERSION

WIND RAIN HOUSE

General	Urban Design	Landscape	Ecology	CWB
Designation Boundary	Concrete Bridge Barrier	Individual Retained Trees	Retained Valued Terrestrial Vegetation	Loose Chip CWB
Wire Barrier	Concrete Noise Wall	Retained Vegetation	Retained Valued Wetland Vegetation	Chip Seal CWB
W-Barrier	Culvert Headwall	Grass	Planted Indigenous Terrestrial Habitat	Concrete CWB
Barrier Transition	Retaining Wall	Massed Planting	Planted Indigenous Wetland Habitat	Existing Access Track or CWB
Concrete Traffic Barrier	Bridge Deck	with Tree Enrichment	Stream Mitigation / Riparian Habitat	
Culvert	Bridge Abutment	Wetland / Riparian Planting	Existing Water Body	
Swale	Bridge Piers	Massed planting low	Batter Slope	
Planted Swale	2.0m Timber Noise Fence	Specimen Tree	Tadpole	
Flood Storage Area				
Visualisation Viewpoint				

C	CERTIFIED ISSUE	VB	17/12/14
No.	Revision	By	Date

Original Scale (A1)	Design	Approved For Construction
1:1000	Drawn	Date
Reduced Scale (A3)	Drawn	
1:2000	Checked	



Project: SH1 MACKAYS TO PEKA PEKA EXPRESSWAY  
RP 1012/0.00 TO 1023/5.00

Title: SSMP 2 [330-340-350] - SHEET 2  
MASTER PLAN

Drawing No: M2PP-121-D-DWG-8101  
Rev: C

DETAIL DESIGN (DET)





A1 REPRODUCTION SCALE  
0mm

A3 REPRODUCTION SCALE  
0mm

- KEY CPTD CONSIDERATIONS:**
- NO TALL BARRIERS OR ELEMENTS THAT CREATE 'OUTSIDE ROOMS'/PLACES TO HIDE.
  - CLEAR LINES OF SIGHT AT INTERSECTIONS.
  - ENSURE CLEAR VIEWS TO THE EXITS OF CWB.
  - REMOVE TALL VEGETATION FROM CWB INTERSECTIONS.
  - THE 'TAGGABILITY' OF MATERIALS AND SURFACES.
  - LOW PLANTING 5.0M WIDE FROM EDGE OF FOOTPATH ALONG RAUMATI ROAD TO MAINTAIN LEGIBILITY AND ELIMINATE PLACES FOR HIDING.
  - LOW PLANTING AT BRIDGE ABUTMENTS.

General	Urban Design	Landscape	Ecology	CWB
— Designation Boundary	Concrete Bridge Barrier	Individual Retained Trees	Retained Valued Terrestrial Vegetation	Loose Chip CWB
- - - Wire Barrier	Concrete Noise Wall	Retained Vegetation	Retained Valued Wetland Vegetation	Chip Seal CWB
- · - W-Barrier	Culvert Headwall	Grass	Planted Indigenous Terrestrial Habitat	Concrete CWB
— · — Barrier Transition	Retaining Wall	Massed Planting	Planted Indigenous Wetland Habitat	Existing Access Track or CWB
- · - Concrete Traffic Barrier	Bridge Deck	with Tree Enrichment	Stream Mitigation / Riparian Habitat	
- · - Culvert	Bridge Abutment	Wetland / Riparian Planting	Existing Water Body	
- · - Swale	Bridge Piers	Massed planting low		
- · - Planted Swale	2.0m Timber Noise Fence	Specimen Tree		
- · - Flood Storage Area				
● Visualisation Viewpoint				

No.	Revision	By	Chk	Chk.V	Appd	Date
A	ISSUE FOR INFORMATION	VB				22/08/14

Original Scale (A1)	Design	LK	22/08/14	Approved For Construction*
1:1000	Drawn	VB	22/08/14	Date
Reduced Scale (A3)	Design Verifier			
1:2000	Design Check			



Project SH1 MACKAYS TO PEKA PEKA EXPRESSWAY  
RP 1012/0.00 TO 1023/5.00

Title: SSMP 2[330-340-350] - SHEET 3  
MASTER PLAN

Drawing No: M2PP-121-D-DWG-8102  
Rev: A

DETAIL DESIGN (DET)

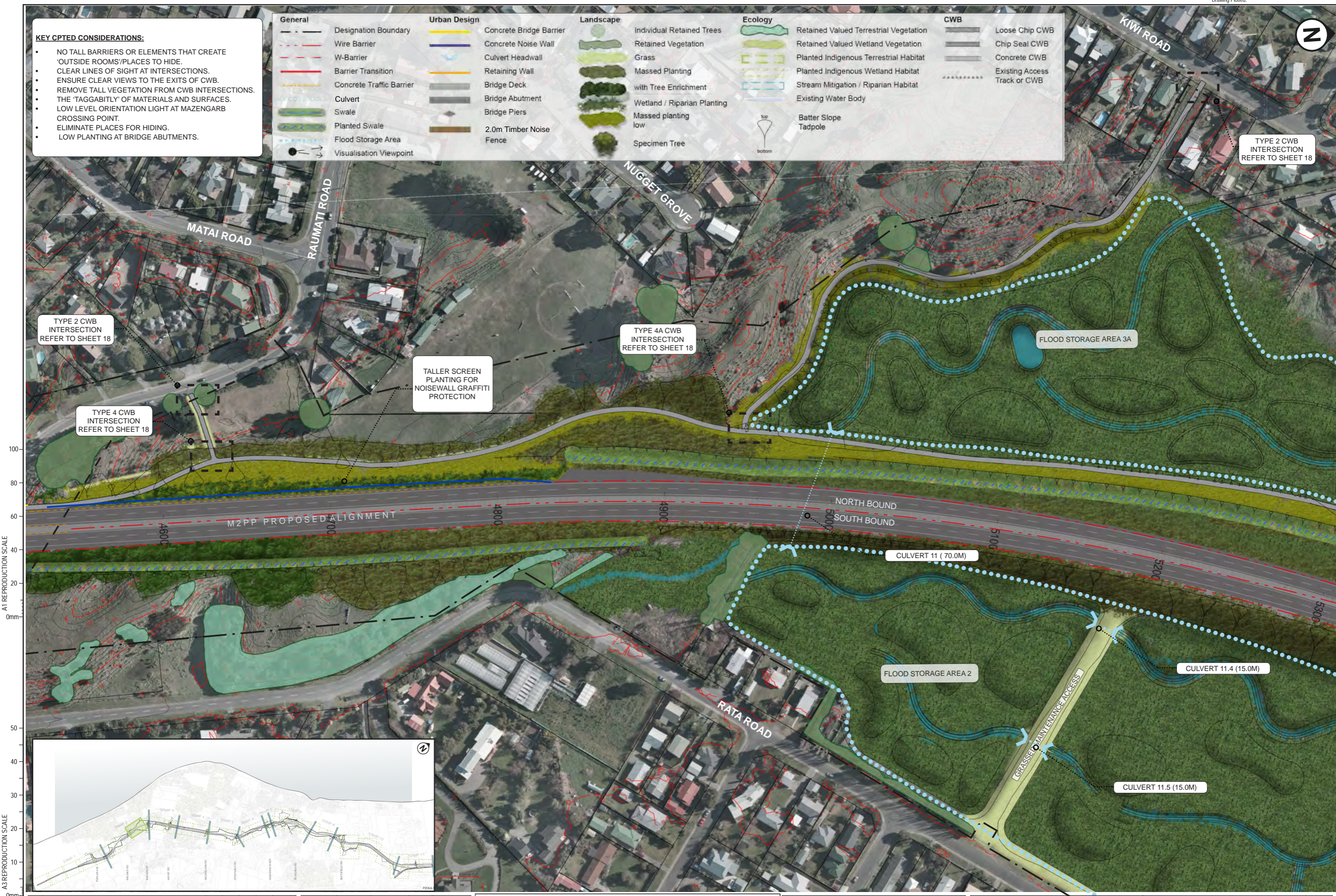
Document No.





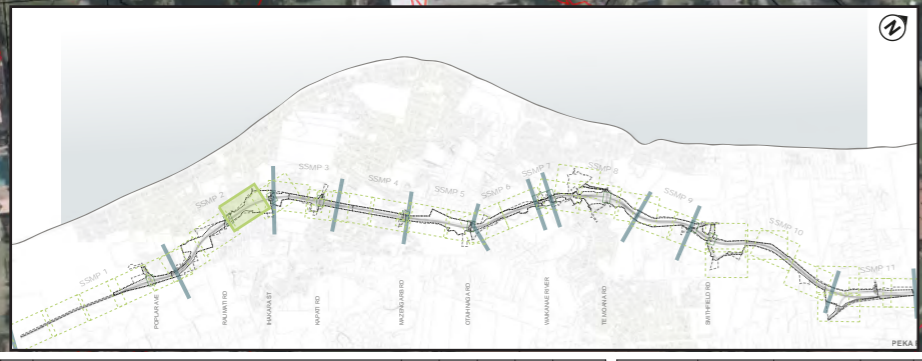
- KEY CPTED CONSIDERATIONS:**
- NO TALL BARRIERS OR ELEMENTS THAT CREATE 'OUTSIDE ROOMS'/PLACES TO HIDE.
  - CLEAR LINES OF SIGHT AT INTERSECTIONS.
  - ENSURE CLEAR VIEWS TO THE EXITS OF CWB.
  - REMOVE TALL VEGETATION FROM CWB INTERSECTIONS. THE 'TAGGABILITY' OF MATERIALS AND SURFACES.
  - LOW LEVEL ORIENTATION LIGHT AT MAZENGARB CROSSING POINT.
  - ELIMINATE PLACES FOR HIDING.
  - LOW PLANTING AT BRIDGE ABUTMENTS.

General	Urban Design	Landscape	Ecology	CWB
Designation Boundary	Concrete Bridge Barrier	Individual Retained Trees	Retained Valued Terrestrial Vegetation	Loose Chip CWB
Wire Barrier	Concrete Noise Wall	Retained Vegetation	Retained Valued Wetland Vegetation	Chip Seal CWB
W-Barrier	Culvert Headwall	Grass	Planted Indigenous Terrestrial Habitat	Concrete CWB
Barrier Transition	Retaining Wall	Massed Planting	Planted Indigenous Wetland Habitat	Existing Access Track or CWB
Concrete Traffic Barrier	Bridge Deck	Massed Planting with Tree Enrichment	Stream Mitigation / Riparian Habitat	
Culvert	Bridge Abutment	Wetland / Riparian Planting	Existing Water Body	
Swale	Bridge Piers	Massed planting low		
Planted Swale	2.0m Timber Noise Fence	Specimen Tree	Batter Slope Tadpole	
Flood Storage Area				
Visualisation Viewpoint				



A1 REPRODUCTION SCALE  
0mm

A3 REPRODUCTION SCALE  
0mm



No.	Revision	By	Chk	Chk.V	Appd	Date

Original Scale (A1)	Design	LK	22/08/14	Approved For Construction
1:1000	Drawn	VB	22/08/14	Date
Reduced Scale (A3)	Design Verifier			
1:2000	Design Check			



Project SH1 MACKAYS TO PEKA PEKA EXPRESSWAY  
RP 1012/0.00 TO 1023/5.00

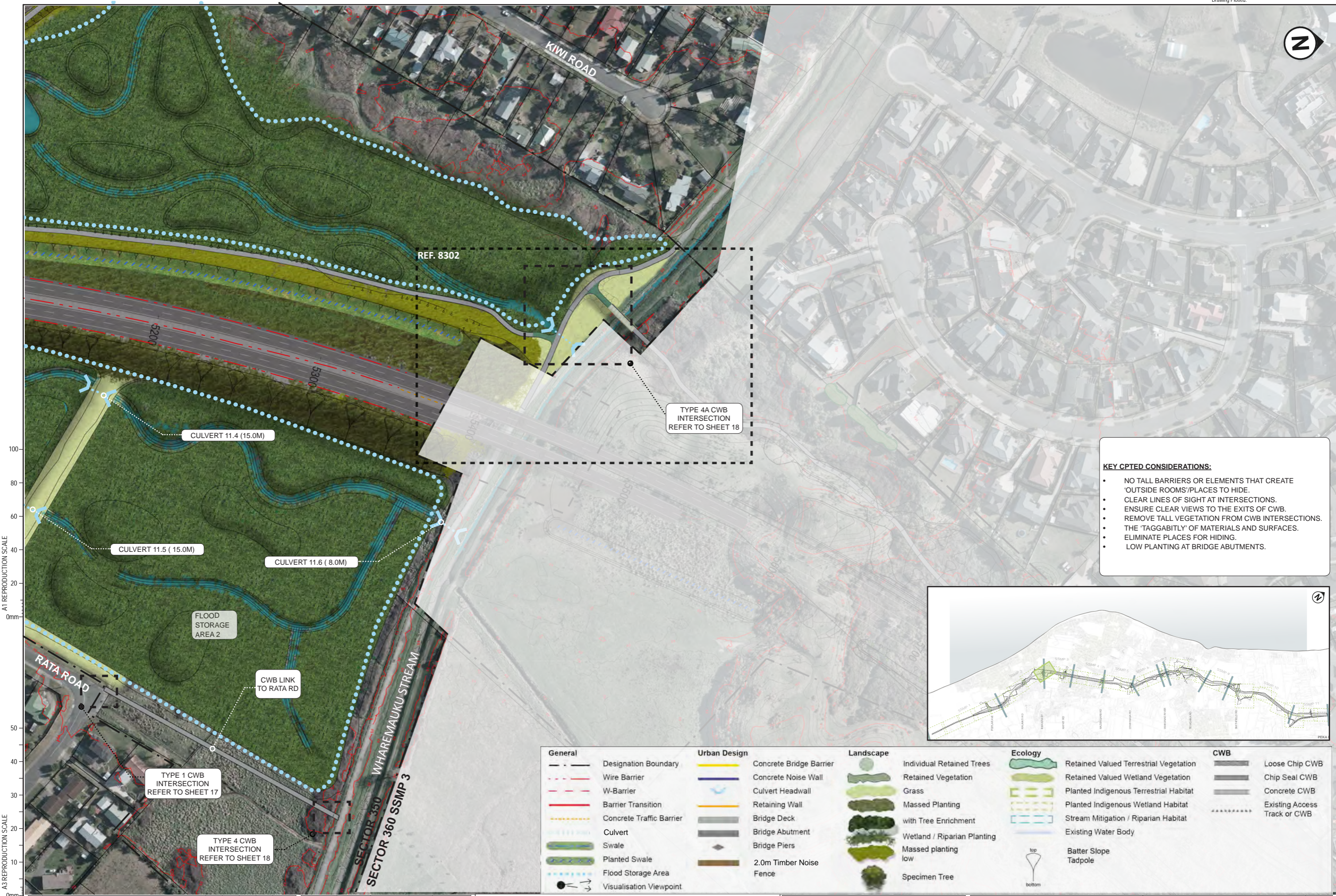
Title: SSMP 2[330-340-350] - SHEET 4  
MASTER PLAN

Drawing No: M2PP-121-D-DWG-8103

Rev. 1

DETAIL DESIGN (DET)





- KEY CPTED CONSIDERATIONS:**
- NO TALL BARRIERS OR ELEMENTS THAT CREATE 'OUTSIDE ROOMS'/PLACES TO HIDE.
  - CLEAR LINES OF SIGHT AT INTERSECTIONS.
  - ENSURE CLEAR VIEWS TO THE EXITS OF CWB.
  - REMOVE TALL VEGETATION FROM CWB INTERSECTIONS.
  - THE 'TAGGABILITY' OF MATERIALS AND SURFACES.
  - ELIMINATE PLACES FOR HIDING.
  - LOW PLANTING AT BRIDGE ABUTMENTS.



General	Urban Design	Landscape	Ecology	CWB
<ul style="list-style-type: none"> <li>Designation Boundary</li> <li>Wire Barrier</li> <li>W-Barrier</li> <li>Barrier Transition</li> <li>Concrete Traffic Barrier</li> <li>Culvert</li> <li>Swale</li> <li>Planted Swale</li> <li>Flood Storage Area</li> <li>Visualisation Viewpoint</li> </ul>	<ul style="list-style-type: none"> <li>Concrete Bridge Barrier</li> <li>Concrete Noise Wall</li> <li>Culvert Headwall</li> <li>Retaining Wall</li> <li>Bridge Deck</li> <li>Bridge Abutment</li> <li>Bridge Piers</li> <li>2.0m Timber Noise Fence</li> </ul>	<ul style="list-style-type: none"> <li>Individual Retained Trees</li> <li>Retained Vegetation</li> <li>Grass</li> <li>Massed Planting with Tree Enrichment</li> <li>Wetland / Riparian Planting</li> <li>Massed planting low</li> <li>Specimen Tree</li> </ul>	<ul style="list-style-type: none"> <li>Retained Valued Terrestrial Vegetation</li> <li>Retained Valued Wetland Vegetation</li> <li>Planted Indigenous Terrestrial Habitat</li> <li>Planted Indigenous Wetland Habitat</li> <li>Stream Mitigation / Riparian Habitat</li> <li>Existing Water Body</li> <li>Batter Slope</li> <li>Tadpole</li> </ul>	<ul style="list-style-type: none"> <li>Loose Chip CWB</li> <li>Chip Seal CWB</li> <li>Concrete CWB</li> <li>Existing Access Track or CWB</li> </ul>

A3 REPRODUCTION SCALE		A1 REPRODUCTION SCALE	
0mm	10	0mm	100
20	30	20	80
40	40	40	60
50	50	60	40
60	60	80	20
80	80	100	0mm

Original Scale (A1)	1:1000	Design		Approved For Construction	
Reduced Scale (A3)	1:2000	Drawn		Date	
		Design Verifier			
		Design Check			

**NZ TRANSPORT AGENCY**  
WAKA KOTAHI

**MacKays to Peka Peka**  
Wellington Northern Corridor

Project: SH1 MACKAYS TO PEKA PEKA EXPRESSWAY  
RP 1012/0.00 TO 1023/5.00

Title: SSMP 2[330-340-350] - SHEET 5  
MASTER PLAN

Drawing No: M2PP-121-D-DWG-8104  
Rev: C

DETAIL DESIGN (DET)

Document No.