

VEGETATION TO BE RETAINED

	TERRESTRIAL VALUED VEGETATION (CONSENT CONDITION G.41 c) i)
	WETLAND VALUED VEGETATION (CONSENT CONDITION G.41 c) ii)
	TERRESTRIAL VEGETATION - NATIVE
	TERRESTRIAL VEGETATION - EXOTIC
	WETLAND VEGETATION - NATIVE
	WETLAND VEGETATION - EXOTIC / OPEN WATER
	LANDFORM TO BE RETAINED
	DESIGNATION

NOTES:

1. AREAS OF VEGETATION IDENTIFIED TO BE RETAINED ARE SUBJECT TO MARKING ON SITE BY AN ECOLOGIST OR LANDSCAPE ARCHITECT PRIOR TO TEMPORARY FENCING.
2. REMOVAL OF ANY VEGETATION MARKED FOR RETENTION MUST BE APPROVED BY A LANDSCAPE ARCHITECT OR ECOLOGIST.
3. COMPLIANCE WITH THE ABOVE IS A REQUIREMENT OF THE CONSENT CONDITIONS.

A1 REPRODUCTION SCALE
0mm

A3 REPRODUCTION SCALE
0mm

MATCHLINE REFER: M2PP-32R-D-DWG-8702

No.	Revision	By	Chk	Chk.V	Appd	Date
2	FOR CONSTRUCTION - NO CHANGE IFC	MP	WCH			24.10.14
1	FOR CONSTRUCTION	MP	WCH	SW		13.11.13

Original Scale (A1)	Design	Drawn	Date	Approved For Construction
1:500	B FAULKNER	M POWELL	19.09.13	P BRADSHAW
Reduced Scale (A3)	Design	Checked	Date	
1:1000	B FAULKNER	W HOLCROFT	13.11.13	15.11.13

NZ TRANSPORT AGENCY
WAKA KOTAHĪ

MacKays to Peka Peka
Wellington Northern Corridor

Project: SH1 MACKAYS TO PEKA PEKA EXPRESSWAY
RP 1012/0.00 TO 1023/5.00

Title: POPLAR AVE INTERCHANGE VEGETATION TO BE RETAINED SHEET 3

Drawing No: M2PP-32R-D-DWG-8703
Rev: 2

320

ORIGINAL DRAWING
IN COLOUR

FOR CONSTRUCTION

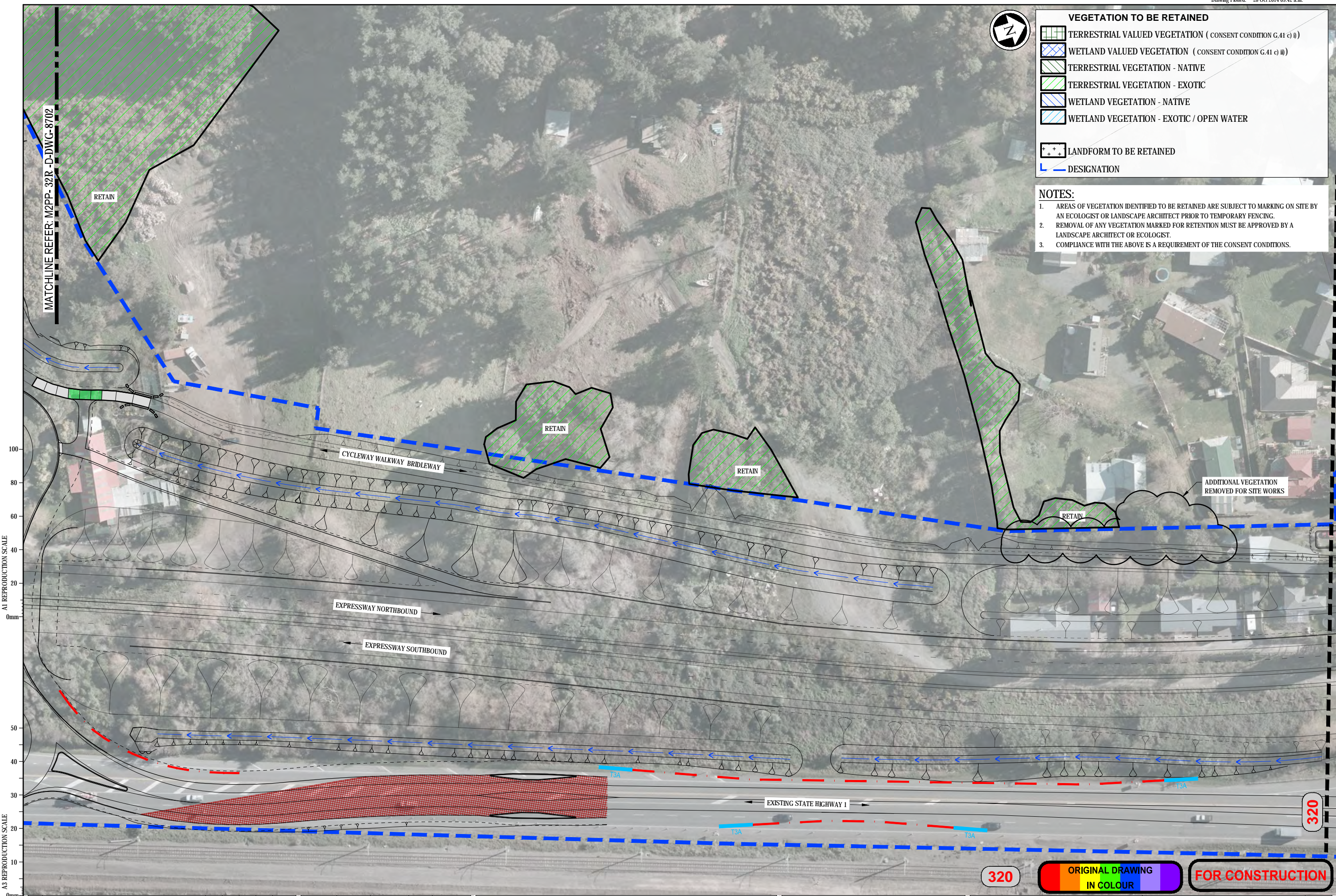


VEGETATION TO BE RETAINED

- TERRESTRIAL VALUED VEGETATION (CONSENT CONDITION G.41 c) i)
- WETLAND VALUED VEGETATION (CONSENT CONDITION G.41 c) ii)
- TERRESTRIAL VEGETATION - NATIVE
- TERRESTRIAL VEGETATION - EXOTIC
- WETLAND VEGETATION - NATIVE
- WETLAND VEGETATION - EXOTIC / OPEN WATER
- LANDFORM TO BE RETAINED
- DESIGNATION

NOTES:

1. AREAS OF VEGETATION IDENTIFIED TO BE RETAINED ARE SUBJECT TO MARKING ON SITE BY AN ECOLOGIST OR LANDSCAPE ARCHITECT PRIOR TO TEMPORARY FENCING.
2. REMOVAL OF ANY VEGETATION MARKED FOR RETENTION MUST BE APPROVED BY A LANDSCAPE ARCHITECT OR ECOLOGIST.
3. COMPLIANCE WITH THE ABOVE IS A REQUIREMENT OF THE CONSENT CONDITIONS.



A1 REPRODUCTION SCALE
0mm 20 40 60 80 100

A3 REPRODUCTION SCALE
0mm 10 20 30 40 50

No.	Revision	By	Chk	Chk-V	Appd	Date
2	FOR CONSTRUCTION - REVISED AS NOTED	MP	GFB	DH	DC	24.10.14
1	FOR CONSTRUCTION	MP	WCH	DH	SW	13.11.13

Original Scale (A1)	Design	Drawn	Date	Approved For Construction
1:500	B FAULKNER	M POWELL	19.09.13	P BRADSHAW
Reduced Scale (A3)	Dwg Verifier	B EVANS	12.11.13	
1:1000	Dwg Check	W HOLCROFT	13.11.13	Date 15.11.13

* Refer to Revision 1 for Original Signature

Project: SH1 MACKAYS TO PEKA PEKA EXPRESSWAY
RP 1012/0.00 TO 1023/5.00

Title: POPLAR AVE INTERCHANGE VEGETATION TO BE RETAINED SHEET 4

Drawing No: M2PP-32R-D-DWG-8704
Rev: 2

320

ORIGINAL DRAWING
IN COLOUR

FOR CONSTRUCTION

KEY

PLANTING TYPE PLANTING MIX AREA CODE ASSOCIATED SHEET NUMBER	MASSED PLANTING	TREES - FORESTRY GRADE	GRASS - LOW	WETLAND PLANTING
MASSED PLANTING - LOW	TREES - SPECIMEN GRADE	GRASS - SWALE	RIPARIAN PLANTING	
MASSED PLANTING - TREE ENRICHMENT	TREES - POLE GRADE	GRASS - ROUGH		
MASSED PLANTING - SWALE	TREE WIND SHELTER			
PLANTING BOUNDARY	EXISTING VEGETATION TO BE RETAINED			
				DESIGNATION

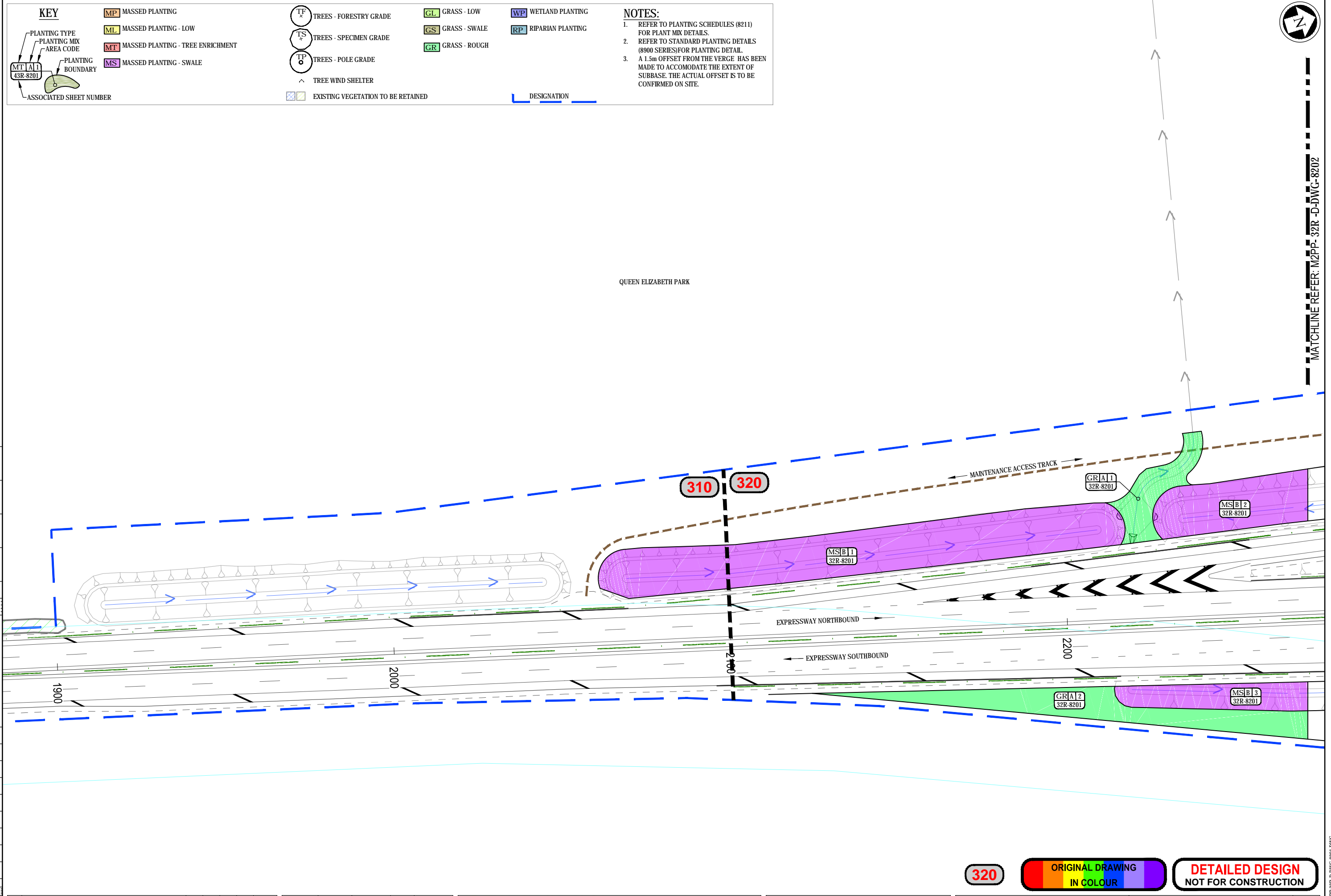
NOTES:

- REFER TO PLANTING SCHEDULES (8211) FOR PLANT MIX DETAILS.
- REFER TO STANDARD PLANTING DETAILS (8900 SERIES) FOR PLANTING DETAIL.
- A 1.5m OFFSET FROM THE VERGE HAS BEEN MADE TO ACCOMMODATE THE EXTENT OF SUBBASE. THE ACTUAL OFFSET IS TO BE CONFIRMED ON SITE.



A1 REPRODUCTION SCALE
0mm 10 20 30 40 50 60 80 100

A3 REPRODUCTION SCALE
0mm 10 20 30 40 50



MATCHLINE REFER: M2PP-32R-D-DWG-8202

No.	Revision	By	Chk	Chk-V	Appd	Date
A	FOR DETAILED DESIGN	MP	GFB	DH	DC	24.10.14

Original Scale (A1)	Design	Drawn	Date	Approved For Construction*
1:500	F BAGGLEY	M. POWELL	11.08.14	
Reduced Scale (A3)		Dwg Verifier	Date	
1:1000		B EVANS	24.10.14	
		Dwg Check	Date	
		G F B	24.10.14	

* Refer to Revision 1 for Original Signature

Project: SH1 MACKAYS TO PEKA PEKA EXPRESSWAY
RP 1012/0.00 TO 1023/5.00

Title: POPLAR AVE INTERCHANGE PLANTING PLAN SHEET 1

Drawing No: M2PP-32R-D-DWG-8201
Rev: A

320 ORIGINAL DRAWING IN COLOUR DETAILED DESIGN NOT FOR CONSTRUCTION

MATCHLINE REFER: M2PP- 32R -D-DWG-8204

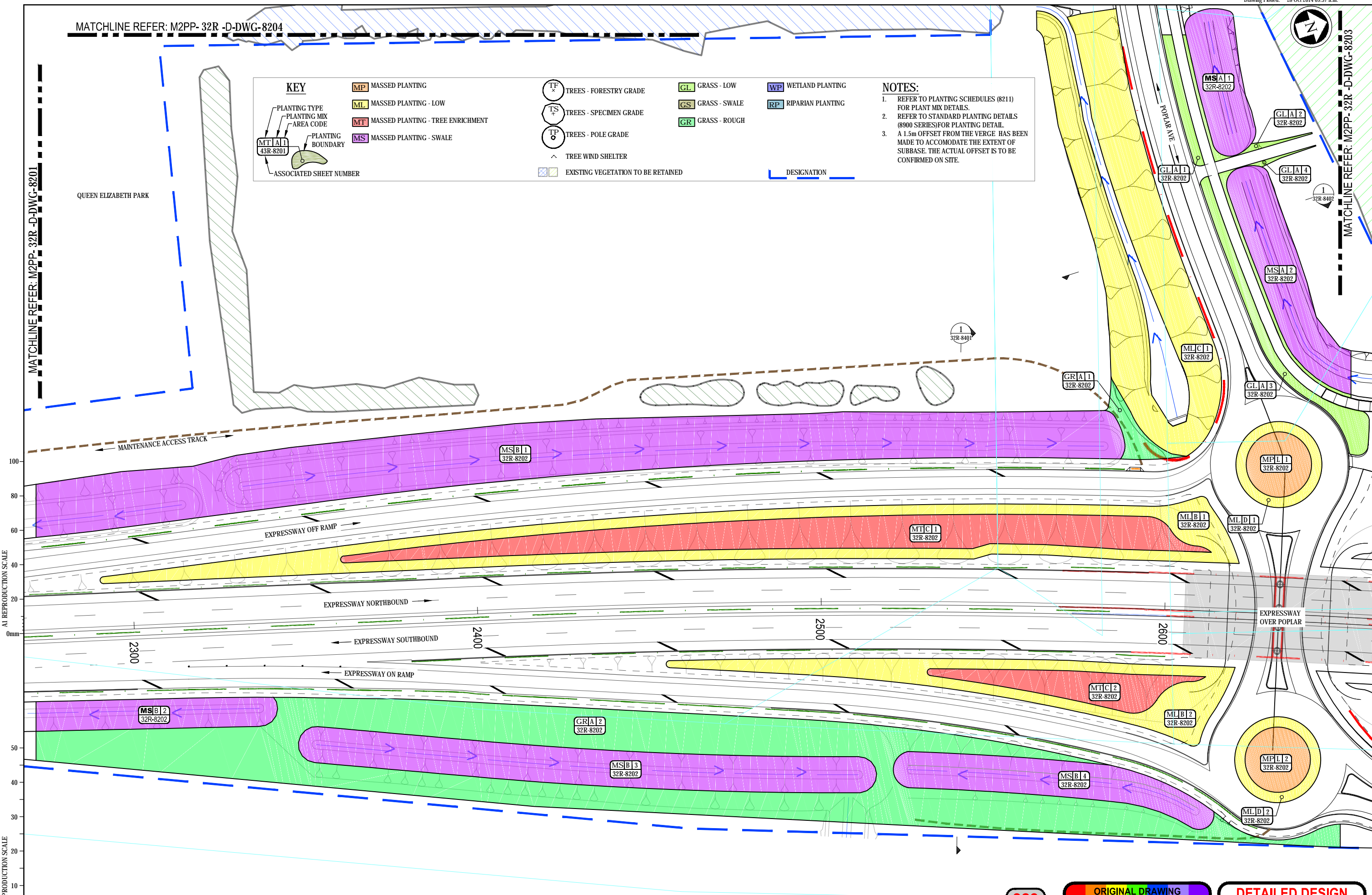
MATCHLINE REFER: M2PP- 32R -D-DWG-8203

KEY

PLANTING TYPE PLANTING MIX AREA CODE	MASSED PLANTING	TREES - FORESTRY GRADE	GRASS - LOW	WETLAND PLANTING
PLANTING BOUNDARY	MASSED PLANTING - LOW	TREES - SPECIMEN GRADE	GRASS - SWALE	RIPARIAN PLANTING
ASSOCIATED SHEET NUMBER	MASSED PLANTING - TREE ENRICHMENT	TREES - POLE GRADE	GRASS - ROUGH	
	MASSED PLANTING - SWALE	TREE WIND SHELTER		
		EXISTING VEGETATION TO BE RETAINED		DESIGNATION

NOTES:

- REFER TO PLANTING SCHEDULES (8211) FOR PLANT MIX DETAILS.
- REFER TO STANDARD PLANTING DETAILS (8900 SERIES) FOR PLANTING DETAIL.
- A 1.5m OFFSET FROM THE VERGE HAS BEEN MADE TO ACCOMMODATE THE EXTENT OF SUBBASE. THE ACTUAL OFFSET IS TO BE CONFIRMED ON SITE.



A1 REPRODUCTION SCALE

A3 REPRODUCTION SCALE

No.	Revision	By	Chk	Chk-V	Appd	Date
A	FOR DETAILED DESIGN	MP	GFB	DH	DC	24.10.14

Original Scale (A1)	Design	Drawn	Date	Approved For Construction*
1:500	F BAGGLEY	M. POWELL	11.08.14	11.08.14
Reduced Scale (A3)	Dwg Verifier	B EVANS	24.10.14	
1:1000	Dwg Check	C F-B	24.10.14	

* Refer to Revision 1 for Original Signature



MacKays to Peka Peka
Wellington Northern Corridor

Project: SH1 MACKAYS TO PEKA PEKA EXPRESSWAY
RP 1012/0.00 TO 1023/5.00

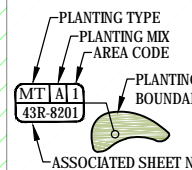
320 ORIGINAL DRAWING IN COLOUR DETAILED DESIGN NOT FOR CONSTRUCTION

Title: POPLAR AVE INTERCHANGE PLANTING PLAN SHEET 2

Drawing No: M2PP-32R-D-DWG-8202 Rev: A



KEY



- MP** MASSED PLANTING
- ML** MASSED PLANTING - LOW
- MT** MASSED PLANTING - TREE ENRICHMENT
- MS** MASSED PLANTING - SWALE

- TF** TREES - FORESTRY GRADE
- TS** TREES - SPECIMEN GRADE
- TP** TREES - POLE GRADE
- ^ TREE WIND SHELTER
- EXISTING VEGETATION TO BE RETAINED

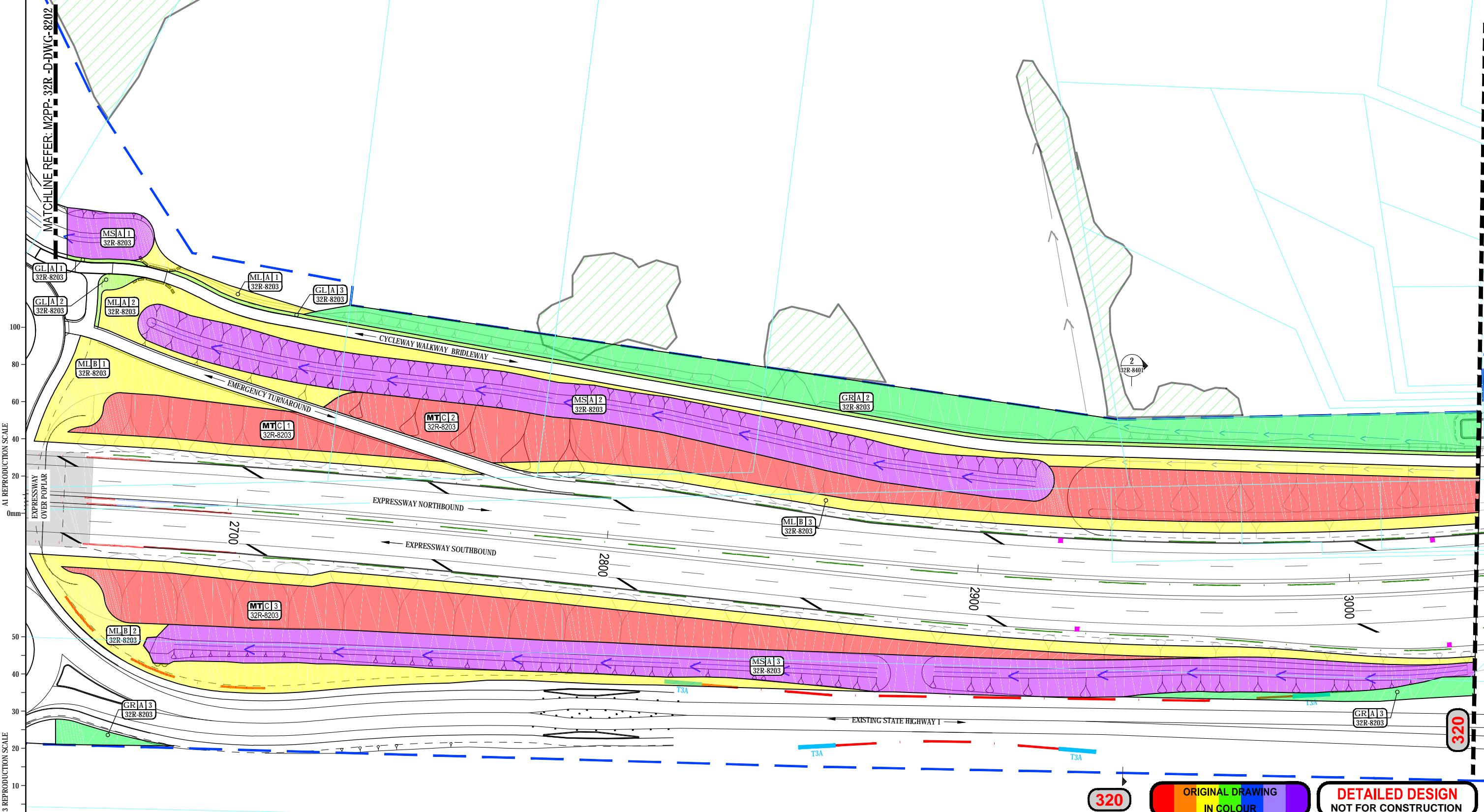
- GL** GRASS - LOW
- GS** GRASS - SWALE
- GR** GRASS - ROUGH

- WP** WETLAND PLANTING
- RP** RIPARIAN PLANTING

DESIGNATION

NOTES:

1. REFER TO PLANTING SCHEDULES (8211) FOR PLANT MIX DETAILS.
2. REFER TO STANDARD PLANTING DETAILS (8900 SERIES) FOR PLANTING DETAIL.
3. A 1.5m OFFSET FROM THE VERGE HAS BEEN MADE TO ACCOMMODATE THE EXTENT OF SUBBASE. THE ACTUAL OFFSET IS TO BE CONFIRMED ON SITE.



A1 REPRODUCTION SCALE

A3 REPRODUCTION SCALE

320

ORIGINAL DRAWING
IN COLOUR

DETAILED DESIGN
NOT FOR CONSTRUCTION

No.	Revision	By	Chk	Chk-V	Appd	Date
A	FOR DETAILED DESIGN	MP	GFB	DH	DC	24.10.14

Original Scale (A1)	Design	F BAGGLEY	11.08.14	Approved For Construction*
1:500	Drawn	M. POWELL	11.08.14	
Reduced Scale (A3)	Design Checker	B EVANS	24.10.14	Date
1:1000	Dwg Check	G F-B	24.10.14	

MacKays to Peka Peka

Wellington Northern Corridor

Project: SH1 MACKAYS TO PEKA PEKA EXPRESSWAY
RP 1012/0.00 TO 1023/5.00

Title: POPLAR AVE INTERCHANGE PLANTING PLAN SHEET 3

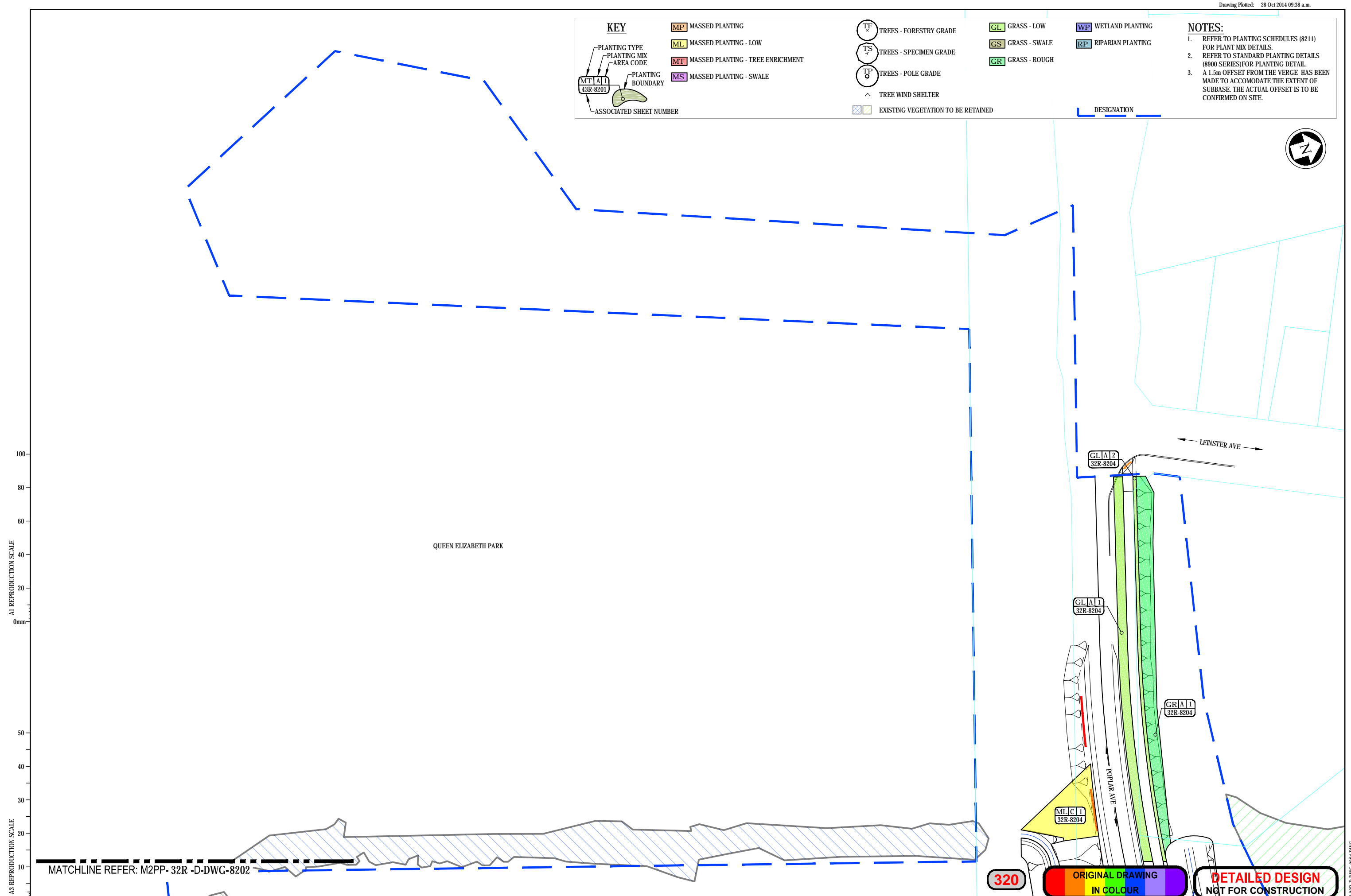
Drawing No: M2PP-32R-D-DWG-8203
Rev: A

KEY

PLANTING TYPE PLANTING MIX AREA CODE	MASSED PLANTING	TREES - FORESTRY GRADE	GRASS - LOW	WETLAND PLANTING
PLANTING BOUNDARY	MASSED PLANTING - LOW	TREES - SPECIMEN GRADE	GRASS - SWALE	RIPARIAN PLANTING
ASSOCIATED SHEET NUMBER	MASSED PLANTING - TREE ENRICHMENT	TREES - POLE GRADE	GRASS - ROUGH	
	MASSED PLANTING - SWALE	TREE WIND SHELTER		
		EXISTING VEGETATION TO BE RETAINED		

NOTES:

- REFER TO PLANTING SCHEDULES (8211) FOR PLANT MIX DETAILS.
- REFER TO STANDARD PLANTING DETAILS (8900 SERIES) FOR PLANTING DETAIL.
- A 1.5m OFFSET FROM THE VERGE HAS BEEN MADE TO ACCOMMODATE THE EXTENT OF SUBBASE. THE ACTUAL OFFSET IS TO BE CONFIRMED ON SITE.



A1 REPRODUCTION SCALE
0mm 20 40 60 80 100

A3 REPRODUCTION SCALE
0mm 10 20 30 40 50

No.	Revision	By	Chk	Chk-V	Appd	Date
A	FOR DETAILED DESIGN	MP	GFB	DH	DC	24.10.14

Original Scale (A1)	Design	Drawn	Date	Approved For Construction*
1:500	F BAGGALEY	M. POWELL	11.08.14	
Reduced Scale (A3)	Dwg Verifier	Dwg Check	Date	
1:1000	B EVANS	G F-B	24.10.14	

* Refer to Revision 1 for Original Signature

NZ TRANSPORT AGENCY
WAKA KOTAHU

MacKays to Peka Peka
Wellington Northern Corridor

Project: SH1 MACKAYS TO PEKA PEKA EXPRESSWAY
RP 1012/0.00 TO 1023/5.00

Title: POPLAR AVE INTERCHANGE PLANTING PLAN SHEET 4

Drawing No: M2PP-32R-D-DWG-8204
Rev: A

320 ORIGINAL DRAWING IN COLOUR DETAILED DESIGN NOT FOR CONSTRUCTION

PLANT TYPE	PLANT MIX	BOTANICAL NAME	COMMON NAME	GRADE	% MIX	NOTES	PLAN REFERENCE	TOTAL
AREA ADJUSTED FOR SLOPE AREA 50955 m ² 53430 m ²								
MT MIX = 1.0M CRS MASSED PLANTING. ENRICHMENT 10.0M CRS, PLANT CENTRES (METRES) MULCH TYPE OM = ORGANIC MULCH, GM = GRADED GRAVEL MULCH, BC = BICOIR N = NO MULCH (IN RIPARIAN / WETLAND ZONES), WM = WOOL MAT SQUARE (RIPARIAN EROSION)								
MASSED LOW EDGE PLANTING - ADJACENT TO CYCLEWAY								
ML	A	Acaena novae-zelandiae	Red bidibidi	1.0 litre	10%	front edge		146 No
ML	A	Austrodenia fulvida	syn Cortaderia, toetoe	1.0 litre	5%	back		73 No
ML	A	Carex dipsacea	Teasel sedge	1.0 litre	10%	front edge		146 No
ML	A	Carex solandri	Forest sedge, Solander's sedge	1.0 litre	10%	front edge		146 No
ML	A	Carex virgata	Swamp sedge	1.0 litre	5%	mid back		73 No
ML	A	Coprosma areolata	Thin leaved Coprosma	1.0 litre	3%	back		44 No
ML	A	Coprosma propinqua	Mingimingi	1.0 litre	5%	mid back		73 No
ML	A	Coprosma repens	Taupata	1.0 litre	10%	mid back		146 No
ML	A	Ficinia nodosa	Wiwi, Knobby club rush	1.0 litre	10%	front edge		146 No
ML	A	Hebe stricta	Koromiko	1.0 litre	10%	back		146 No
ML	A	Melicope simplex		1.0 litre	2%	mid		29 No
ML	A	Muehlenbeckia complexa	Pohuehue, wire vine	1.0 litre	20%	front edge		292 No
MASSED LOW EDGE PLANTING - ADJACENT TO EXPRESSWAY								
ML	B	Acaena novae-zelandiae	Red bidibidi	1.0 litre	10%	front edge		749 No
ML	B	Austrodenia fulvida	syn Cortaderia, toetoe	1.0 litre	5%	back		375 No
ML	B	Carex dipsacea	Teasel sedge	1.0 litre	15%	front edge		1124 No
ML	B	Carex solandri	Forest sedge, Solander's sedge	1.0 litre	10%	front edge		749 No
ML	B	Carex virgata	Swamp sedge	1.0 litre	5%	mid back		375 No
ML	B	Coprosma acerosa	Sand Coprosma	1.0 litre	10%	front mid		749 No
ML	B	Coprosma areolata	Thin leaved Coprosma	1.0 litre	2%	back		150 No
ML	B	Coprosma propinqua	Mingimingi	1.0 litre	10%	mid back		749 No
ML	B	Coprosma repens	Taupata	1.0 litre	8%	mid back		599 No
ML	B	Ficinia nodosa	Wiwi, Knobby club rush	1.0 litre	15%	front edge		1124 No
ML	B	Melicope simplex		1.0 litre	5%	mid		375 No
ML	B	Hebe stricta	Koromiko	1.0 litre	5%	back		375 No
MASSED LOW PLANTING - ROUNDABOUT EDGE FOR SIGHTLINES								
ML	D	Muehlenbeckia complexa	Pohuehue, wire vine	1.0 litre	100%			435 No
MASSED LOW EDGE - QUEEN ELIZABETH PARK DRAIN								
ML	C	Carex lessoniana	Cutty grass	0.5 litre	40%			1221 No
ML	C	Coprosma propinqua	Mingimingi	0.5 litre	10%			305 No
ML	C	Cordyline australis	Ti kouka	0.5 litre	5%			153 No
ML	C	Leptospermum scoparium	Manuka	0.5 litre	25%			763 No
ML	C	Phormium tenax	Harakeke, Flax	0.5 litre	20%			611 No

PLANT TYPE	PLANT MIX	BOTANICAL NAME	COMMON NAME	GRADE	% MIX	NOTES	PLAN REFERENCE	TOTAL
MASSED PLANTING - CENTRE OF ROUNDABOUT (POPLAR AVE)								
MP	L	Cordyline australis	Ti kouka	1.0 litre	15%			89 No
MP	L	Leptospermum scoparium	Manuka	1.0 litre	30%			178 No
MP	L	Phormium tenax	Harakeke, Flax	0.5 litre	55%			327 No
MASSED PLANTING + TREE ENRICHMENT								
MT	C	Aristolelia serrata	Makomako	1.0 litre	5%			446 No
MT	C	Carex lessoniana	Cutty grass	1.0 litre	5%	front		446 No
MT	C	Carpodetus serratus	Putaputaweta	1.0 litre	5%			446 No
MT	C	Coprosma propinqua	Mingimingi	1.0 litre	7%			624 No
MT	C	Coprosma robusta	Karamu	1.0 litre	10%			892 No
MT	C	Cordyline australis	Ti kouka	1.0 litre	5%			446 No
MT	C	Griselinia lucida	Puka, Broadleaf	1.0 litre	2%			178 No
MT	C	Hebe stricta	Koromiko	1.0 litre	8%	front		714 No
MT	C	Kunzea ericoides	Kanuka	1.0 litre	12%			1070 No
MT	C	Macropiper excelsum	Kawakawa	1.0 litre	5%			446 No
MT	C	Melicope ramiflorus	Mahoe	1.0 litre	5%			446 No
MT	C	Melicope ternata	Wharangi	1.0 litre	3%			268 No
MT	C	Myoporum laetum	Ngaio	1.0 litre	3%			268 No
MT	C	Myrsine australis	Mapou, Matipo	1.0 litre	7%			624 No
MT	C	Oleandra solandri	Coastal tree daisy	1.0 litre	5%			446 No
MT	C	Pittosporum tenuifolium	Kohuhu	1.0 litre	8%			714 No
MT	C	Pseudopanax arboreus	Whauwhaupaku, Fivefinger	1.0 litre	2%			178 No
MT	C	Sophora microphylla	Kowhai	1.0 litre	3%			268 No
MT	C	Alectryon excelsus	Titoki	Pb18	30%	enrich		268 No
MT	C	Dysoxylum spectabile	Kohekohe	Pb18	40%	enrich		357 No
MT	C	Knightia excelsa	Rewarewa	Pb18	15%	enrich		134 No
MT	C	Podocarpus totara	Totara	Pb18	15%	enrich		134 No
MASSED SWALE PLANTING								
MS	A	Apodasmia similis	Oioi	0.5 litre	100%	no mulch		13750 No
MASSED SWALE PLANTING - WITH WOODY PLANTS AT TOP EDGES								
MS	B	Apodasmia similis	Oioi	0.5 litre	50%	base / lower sides		10453 No
		Cordyline australis	Ti kouka	1.0 litre	10%	top slope / outer edges		1176 No
MS	B	Leptospermum scoparium	Manuka	1.0 litre	25%	top slope / outer edges		2940 No
MS	B	Phormium tenax	Harakeke, Flax	0.5 litre	15%	top slope / outer edges		1764 No
GRASS								
GL	A	Grass low grow mix	sown, close mow to 100mm	sow				1458 m ²
GR	A	Grass rank - (low grow mix)	sown, allowed to grow rank.	sow				10522 m ²
TOTAL								

A3 REPRODUCTION SCALE

100
80
60
40
20
0mm

50
40
30
20
10
0mm

No.	Revision	By	Chk	Chk-V	Appd	Date
A	FOR DETAILED DESIGN	MP	GFB	DH	DC	24.10.14

Original Scale (A1)	Design	F BAGALLEY	16.09.14	Approved For Construction
NTS	Drawn	M POWELL	16.09.14	
Reduced Scale (A3)	Dwg. Verifier	B EVANS	24.10.14	
NTS	Dwg. Check	G F-B	24.10.14	

Project: SH1 MACKAYS TO PEKA PEKA EXPRESSWAY
 RP 1012/0.00 TO 1023/5.00

Title: POPLAR AVE INTERCHANGE PLANTING SCHEDULE

320 DETAILED DESIGN NOT FOR CONSTRUCTION

Drawing No: M2PP-32R-D-DWG-8211 Rev: A