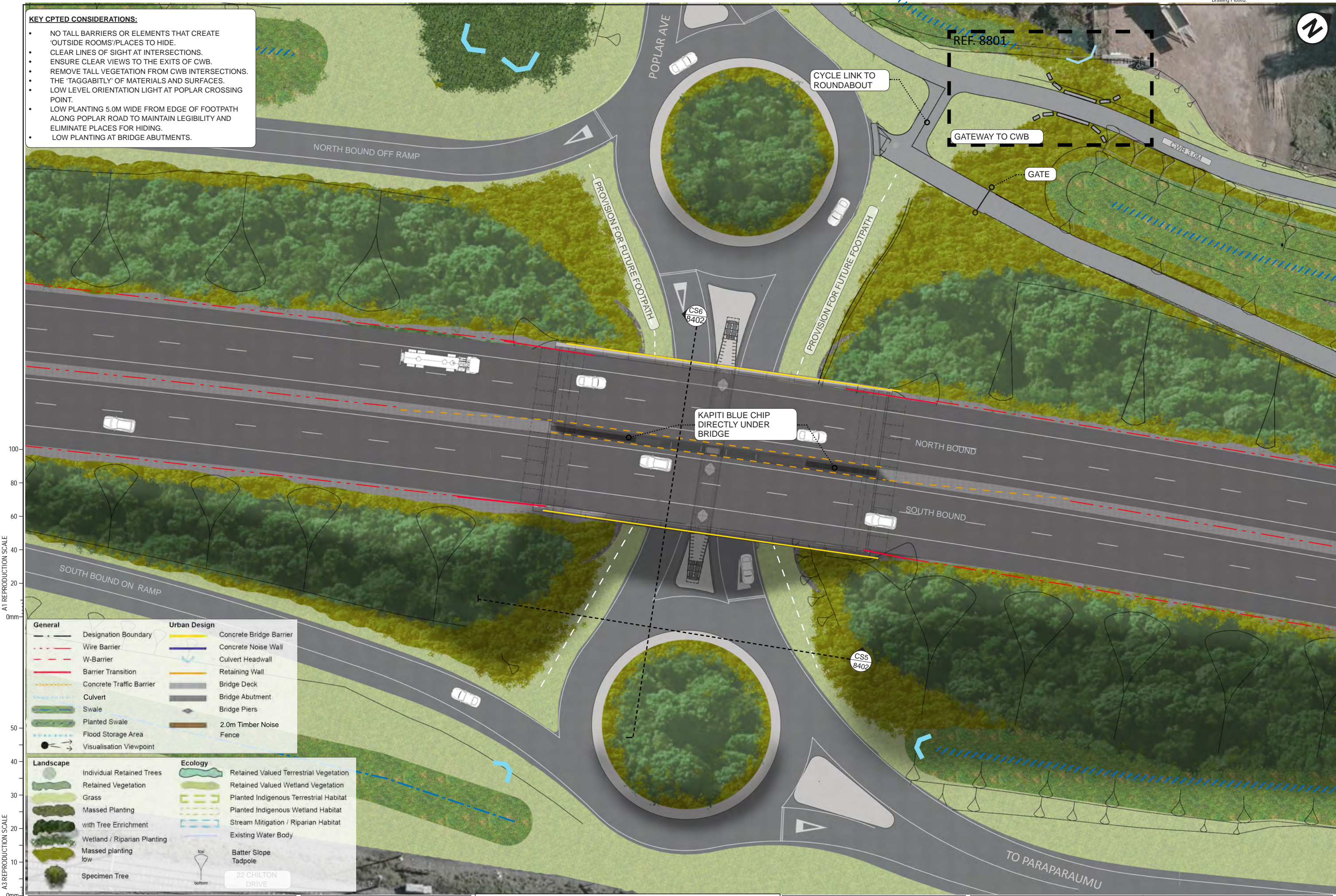




- KEY CPTED CONSIDERATIONS:**
- NO TALL BARRIERS OR ELEMENTS THAT CREATE 'OUTSIDE ROOMS/PLACES TO HIDE.
 - CLEAR LINES OF SIGHT AT INTERSECTIONS.
 - ENSURE CLEAR VIEWS TO THE EXITS OF CWB.
 - REMOVE TALL VEGETATION FROM CWB INTERSECTIONS.
 - THE 'TAGGABITLY' OF MATERIALS AND SURFACES.
 - LOW LEVEL ORIENTATION LIGHT AT POPLAR CROSSING POINT.
 - LOW PLANTING 5.0M WIDE FROM EDGE OF FOOTPATH ALONG POPLAR ROAD TO MAINTAIN LEGIBILITY AND ELIMINATE PLACES FOR HIDING.
 - LOW PLANTING AT BRIDGE ABUTMENTS.



A1 REPRODUCTION SCALE

A3 REPRODUCTION SCALE

General		Urban Design	
---	Designation Boundary	---	Concrete Bridge Barrier
- - -	Wire Barrier	---	Concrete Noise Wall
- - -	W-Barrier	---	Culvert Headwall
- - -	Barrier Transition	---	Retaining Wall
- - -	Concrete Traffic Barrier	---	Bridge Deck
- - -	Culvert	---	Bridge Abutment
- - -	Swale	---	Bridge Piers
- - -	Planted Swale	---	2.0m Timber Noise Fence
- - -	Flood Storage Area		
- - -	Visualisation Viewpoint		

Landscape		Ecology	
---	Individual Retained Trees	---	Retained Valued Terrestrial Vegetation
---	Retained Vegetation	---	Retained Valued Wetland Vegetation
---	Grass	---	Planted Indigenous Terrestrial Habitat
---	Massed Planting	---	Planted Indigenous Wetland Habitat
---	with Tree Enrichment	---	Stream Mitigation / Riparian Habitat
---	Wetland / Riparian Planting	---	Existing Water Body
---	Massed planting low	---	Batter Slope
---	Specimen Tree	---	Tadpole

No.	Revision	By	Chk	Chk.V	Appd	Date
C	CERTIFIED ISSUE	VB				10/11/14

Original Scale (A1)	Design	Drawn	Checked	Approved For Construction
1:250	LK	VB	VB	11/10/14
Reduced Scale (A3)	Design Verifier	Design Check		
1:500				



MacKays to Peka Peka
Wellington Northern Corridor

Project: SH1 MACKAYS TO PEKA PEKA EXPRESSWAY
RP 1012/0.00 TO 1023/5.00

Title: SSMP 1 [320] - SHEET 6
BRIDGE MASTERPLAN

Drawing No: M2PP-121-D-DWG-8301

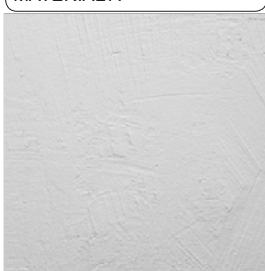
Rev: C

DETAIL DESIGN (DET)

CS5 - CROSS SECTIONAL ELEVATION- POPLAR AVE BRIDGE

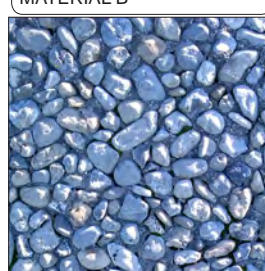
FACING WEST SCALE - 1:200@A3

MATERIAL A

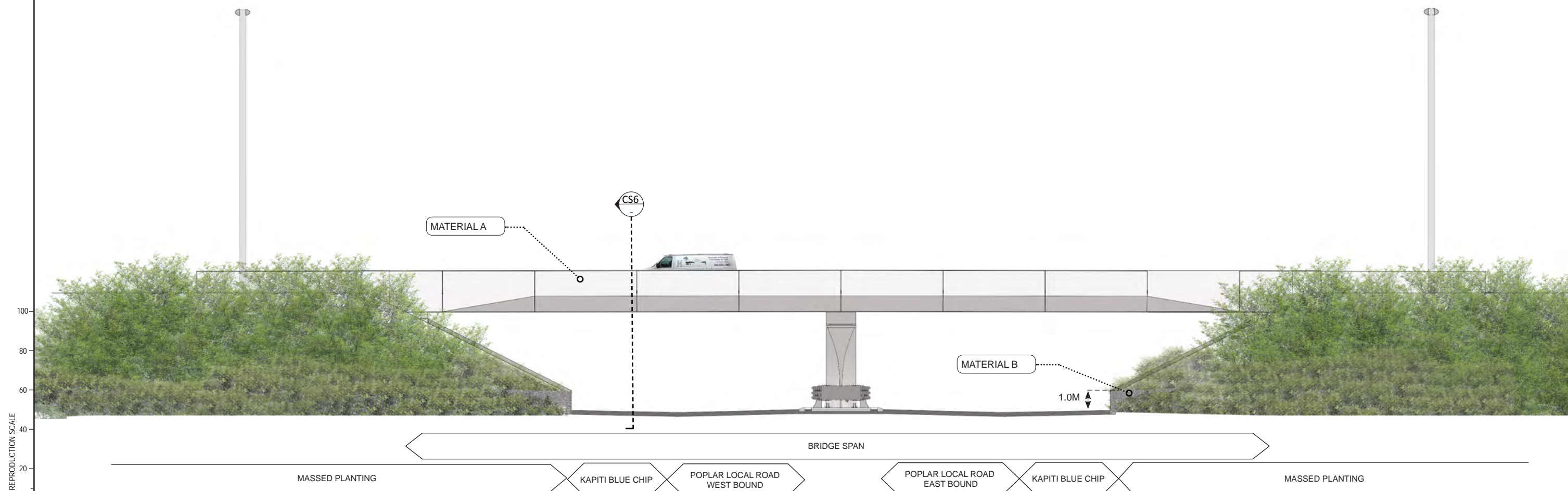
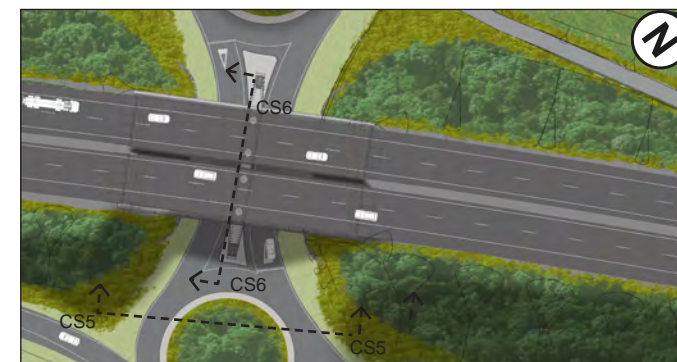


BRIDGE BARRIER:
PRECAST
CONCRETE WITH
2 COATS WHITE
KIEB COATING &
ANTI GRAFFITI
PROTECTION-
PENDING SAMPLE
PANEL APPROVAL

MATERIAL B

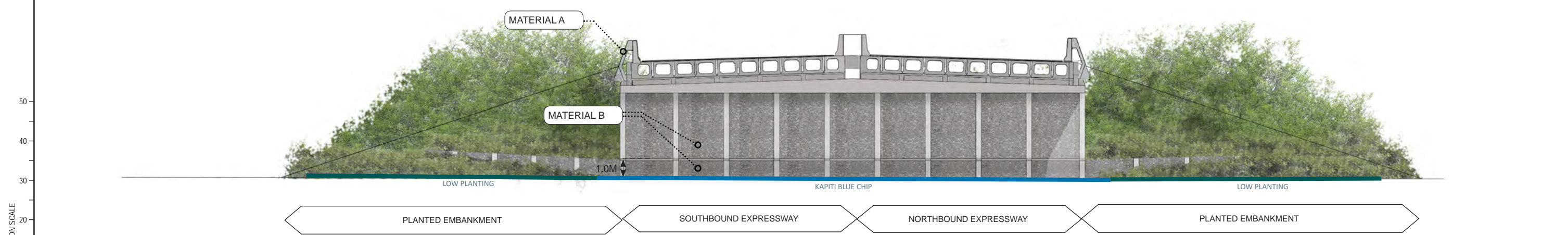


BRIDGE ABUTMENT:
PRECAST
CONCRETE PANEL
WITH INLAID OTAKI
PEB 20MM STONE
AND MATT GRAFFITI
PROTECTION-
PENDING SAMPLE
PANEL APPROVAL



CS6-CROSS SECTIONAL ELEVATION-ABUTMENT

FACING SOUTH SCALE - 1:200@A3



No.	Revision	By	Chk	Chk.V	Appd	Date
C	CERTIFIED ISSUE	VB				10/11/14

Original Scale (A1)	Design	LK	11/10/14	Approved For Construction?
AS SHOWN	Drawn	VB	11/10/14	Date
Ridroad	Design Check			
Scale (A3)				
AS SHOWN				

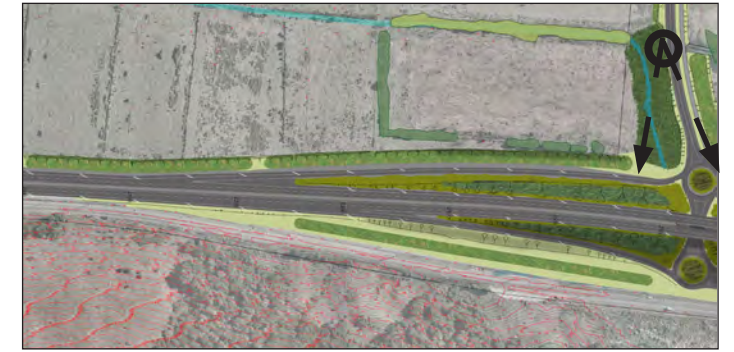


Project: SH1 MACKAYS TO PEKA PEKA EXPRESSWAY
RP 1012/0.00 TO 1023/5.00

Title: SSMP 1 [320]- SHEET 7
BRIDGE ELEVATIONS

Drawing No: M2PP-121-D-DWG-8402
Rev: C

VISUALISATION CONTEXT



A1 REPRODUCTION SCALE
0mm
20
40
60
80
100

DETAIL DESIGN (DET)

VISUALISATION - POPLAR AVE BRIDGE (WEST SIDE OF BRIDGE LOOKING EAST FROM POPLAR AVENUE)

A3 REPRODUCTION SCALE
0mm
10
20
30
40
50

No.	Revision	By	Chk	Chk.V	Appd	Date
C	CERTIFIED ISSUE	VB				10/11/14

Original Scale (A1)	Design	LK	11/10/14	Approved For Construction*
AS SHOWN	Drawn	VB	11/10/14	
Roadwork	Design Verifier			
Scale (A3)	Design Check			
AS SHOWN				Date










Project: SH1 MACKAYS TO PEKA PEKA EXPRESSWAY
RP 1012/0.00 TO 1023/5.00

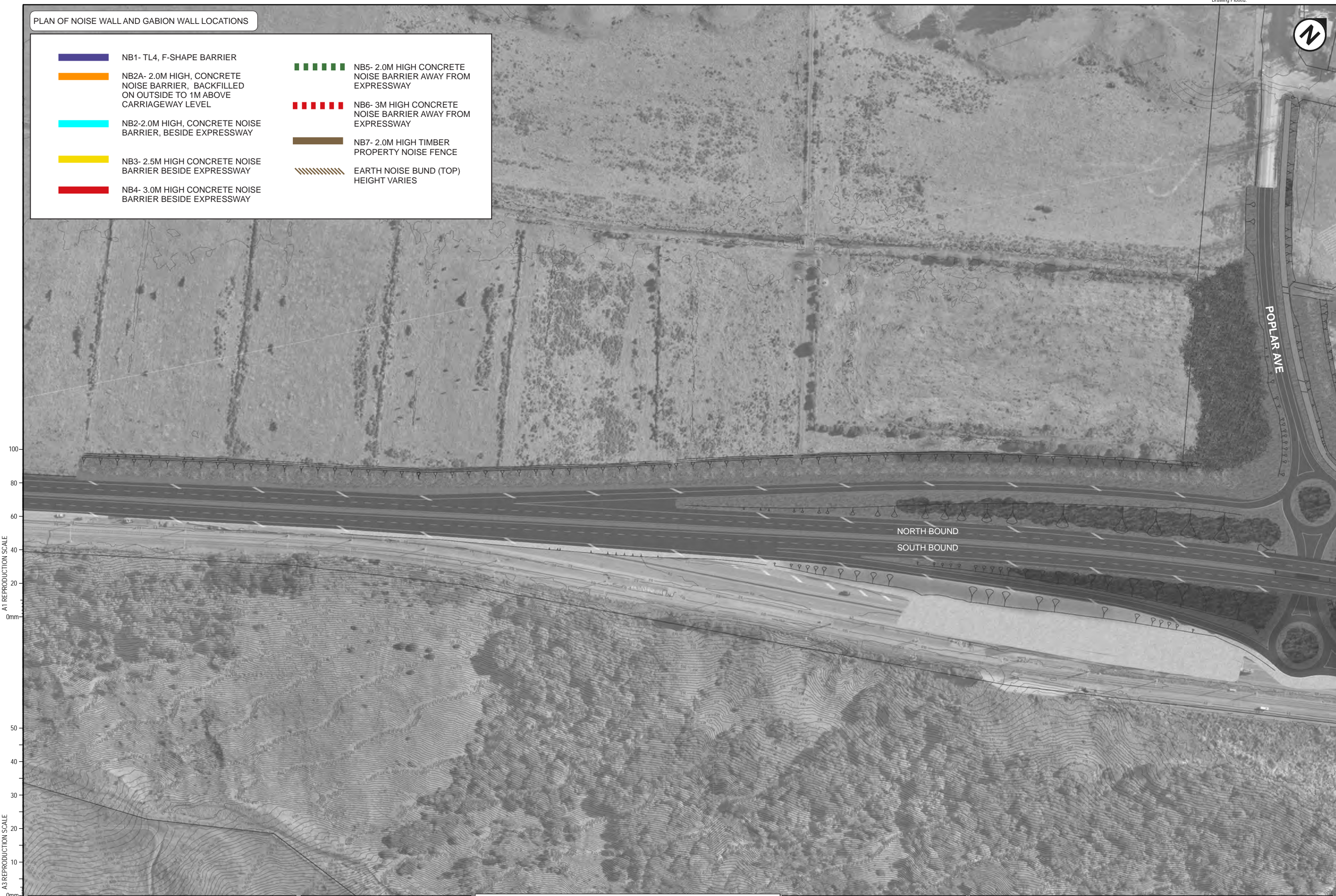
Title: SSMP 1 [320] - SHEET 8
POPLAR AVE

Drawing No: M2PP-121-D-DWG-8801

Rev: C

PLAN OF NOISE WALL AND GABION WALL LOCATIONS

-  NB1- TL4, F-SHAPE BARRIER
-  NB2A- 2.0M HIGH, CONCRETE NOISE BARRIER, BACKFILLED ON OUTSIDE TO 1M ABOVE CARRIAGEWAY LEVEL
-  NB2-2.0M HIGH, CONCRETE NOISE BARRIER, BESIDE EXPRESSWAY
-  NB3- 2.5M HIGH CONCRETE NOISE BARRIER BESIDE EXPRESSWAY
-  NB4- 3.0M HIGH CONCRETE NOISE BARRIER BESIDE EXPRESSWAY
-  NB5- 2.0M HIGH CONCRETE NOISE BARRIER AWAY FROM EXPRESSWAY
-  NB6- 3M HIGH CONCRETE NOISE BARRIER AWAY FROM EXPRESSWAY
-  NB7- 2.0M HIGH TIMBER PROPERTY NOISE FENCE
-  EARTH NOISE BUND (TOP) HEIGHT VARIES



A1 REPRODUCTION SCALE
0mm

A3 REPRODUCTION SCALE
0mm

DETAIL DESIGN (DET)

No.	Revision	By	Chk	Chk.V	Appd	Date
C	CERTIFIED ISSUE	VB				10/11/14

Original Scale (A1)	Design	Drawn	Checked	Approved For Construction
1:1000	LK	VB	VB	11/10/14
Reduced Scale (A3)	Design Verifier	Design Check	Date	
1:2000				



MacKays to Peka Peka
Wellington Northern Corridor

Project SH1 MACKAYS TO PEKA PEKA EXPRESSWAY
RP 1012/0.00 TO 1023/5.00

Title: SSMP 1 [320]-SHEET 9
NOISE WALL LOCATIONS

Drawing No: M2PP-121-D-DWG-8601

Rev: C



PLAN OF NOISE WALL AND GABION WALL LOCATIONS

- NB1- TL4, F-SHAPE BARRIER
- NB2A- 2.0M HIGH, CONCRETE NOISE BARRIER, BACKFILLED ON OUTSIDE TO 1M ABOVE CARRIAGEWAY LEVEL
- NB2-2.0M HIGH, CONCRETE NOISE BARRIER, BESIDE EXPRESSWAY
- NB3- 2.5M HIGH CONCRETE NOISE BARRIER BESIDE EXPRESSWAY
- NB4- 3.0M HIGH CONCRETE NOISE BARRIER BESIDE EXPRESSWAY
- NB5- 2.0M HIGH CONCRETE NOISE BARRIER AWAY FROM EXPRESSWAY
- NB6- 3M HIGH CONCRETE NOISE BARRIER AWAY FROM EXPRESSWAY
- NB7- 2.0M HIGH TIMBER PROPERTY NOISE FENCE
- EARTH NOISE BUND (TOP) HEIGHT VARIES



A1 REPRODUCTION SCALE

A3 REPRODUCTION SCALE

DETAIL DESIGN (DET)

No.	Revision	By	Chk	Chk.V	Appd	Date
C	CERTIFIED ISSUE	VB				10/11/14

Original Scale (A1)	Design	LK	11/10/14	Approved For Construction*
1:1000	Drawn	VB	11/10/14	Date
Ridiculous Scale (A3)	Design Verifier			
1:2000	Design Check			

* Refer to Revision 1 for Original Signature



Project: SH1 MACKAYS TO PEKA PEKA EXPRESSWAY
RP 1012/0.00 TO 1023/5.00

Title: SSMP 1 [320] - SHEET 10
NOISE WALL LOCATIONS

Drawing No: M2PP-121-D-DWG-8602

Rev: C

PLAN OF LIGHTING LOCATIONS

- P-CYCLEWAY LIGHTING
- D-ROAD LIGHTING
- U-UNDER BRIDGE LIGHTING
- UA-UNDER BRIDGE LIGHTING - ARCHITECTURAL

NOTE:
INDICATIVE
LIGHTING
FROM TOC
DESIGN - POLE
HEIGHTS AND
SPACING BY
OTHERS



A1 REPRODUCTION SCALE
0mm
100
80
60
40
20

A3 REPRODUCTION SCALE
0mm
50
40
30
20
10

DETAIL DESIGN (DET)

No.	Revision	By	Chk	Chk.V	Appd	Date
C	CERTIFIED ISSUE	VB				10/11/14

Original Scale (A1)	Design	LJK	11/10/14	Approved For Construction*
1:250	Drawn	VB	11/10/14	
Reduced Scale (A3)	Design Verifier			Date
1:500	Design Check			

Project SH1 MACKAYS TO PEKA PEKA EXPRESSWAY
RP 1012/0.00 TO 1023/5.00

Title: SSMP 1 [320] - SHEET 11 LIGHTING PLAN

Drawing No: M2PP-121-D-DWG-8701

Rev: C



PLAN OF LIGHTING LOCATIONS

- P-CYCLEWAY LIGHTING
- D-ROAD LIGHTING
- U-UNDER BRIDGE LIGHTING
- UA-UNDER BRIDGE LIGHTING - ARCHITECTURAL

NOTE:
INDICATIVE
LIGHTING
FROM TOC
DESIGN - POLE
HEIGHTS AND
SPACING BY
OTHERS



A1 REPRODUCTION SCALE
0mm 20 40 60 80 100

A3 REPRODUCTION SCALE
0mm 10 20 30 40 50

DETAIL DESIGN (DET)

No.	Revision	By	Chk	Chk.V	Appd	Date
C	CERTIFIED ISSUE	VB				10/11/14

Original Scale (A1)	Design	LK	11/10/14	Approved For Construction*
1:250	Drawn	VB	11/10/14	Date
Reduced Scale (A3)	Design Verifier			
1:500	Design Check			

* Refer to Revision 1 for Original Signature



Project: SH1 MACKAYS TO PEKA PEKA EXPRESSWAY
RP 1012/0.00 TO 1023/5.00

Title: SSMP 1 [320] - SHEET 12
LIGHTING PLAN

Drawing No: M2PP-121-D-DWG-8702

Rev: C