

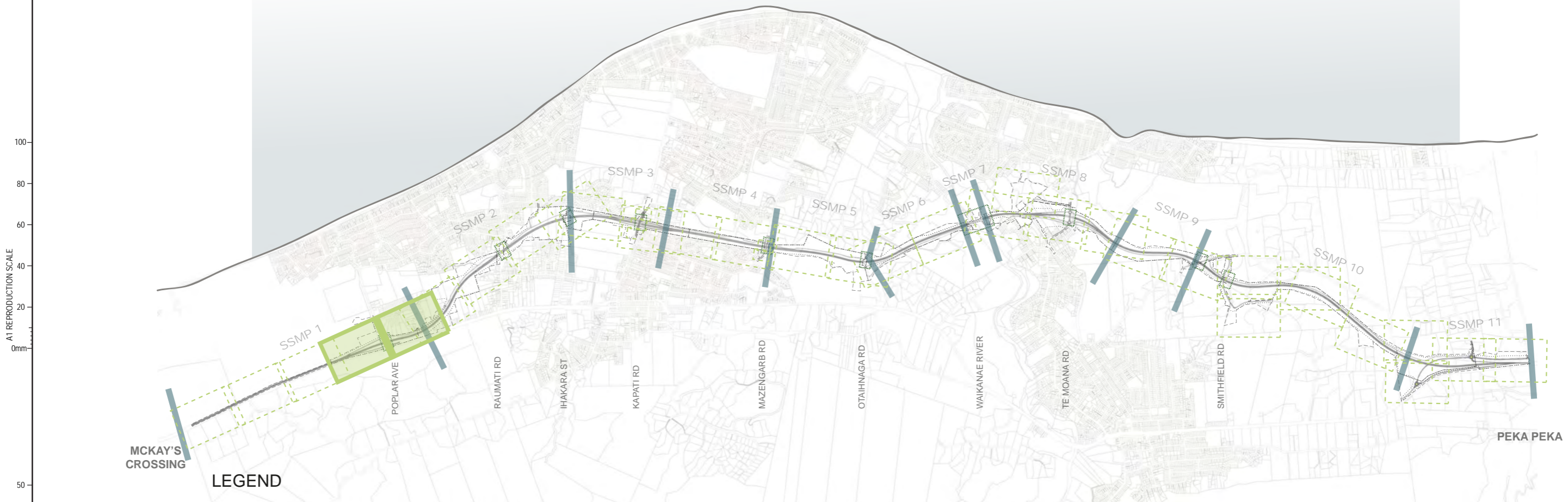
M2PP-121-D-PLNM-0001

Appendix 1: DRAWING SET

Site Specific Management Plan 001 - [sector 320]
MacKays to Peka Peka Expressway

17 DECEMBER 2014 - REV C - CERTIFIED ISSUE

SSMP#	SECTOR	NAME	NOTES
SSMP1	310/320	RAUMATI SOUTH	ISSUED IN TWO PARTS: -SSMP1- 310 -SSMP1- 320
SSMP2	330/340/350	RAUMATI NORTH	
SSMP3	360/370/380	WHAREMAUKU BASIN	
SSMP4	410/420	KAPITI MAZENGARB	
SSMP5&6	430/440/460	OTAIHANGA NORTH&SOUTH	
SSMP7	470	WAIKANA E RIVER	
SSMP8	480/510	TE MOANA	
SSMP9	520	NGARARA	
SSMP10	530/540/550/580	PEKA PEKA SOUTH	ISSUED IN TWO PARTS: -SSMP10-550 -SSMP10-530/540/580
SSMP11	560/570	PEKA PEKA NORTH	



LEGEND

	ROAD		SSMP SHEET (ROAD)		SSMP SHEET (BRIDGE)		PARCEL BOUNDARIES
	SSMP BOUNDARY		CURRENT SSMP SHEET (ROAD)		CURRENT SSMP SHEET (BRIDGE)		CONSTRUCTION BOUNDARY

A1 REPRODUCTION SCALE
0mm
20
40
60
80
100

A3 REPRODUCTION SCALE
0mm
10
20
30
40

DETAIL DESIGN (DET)

No.	Revision	By	Chk	Chk.V	Appd	Date
C	CERTIFIED ISSUE	VB				10/11/14

Original Scale (A1)	Design	LK	11/10/14	Approved For Construction
1:25,000	Drawn	VB	11/10/14	Date
Reduced Scale (A3)	Design Verifier			
1:50,000	Design Check			
	* Refer to Revision 1 for Original Signature			



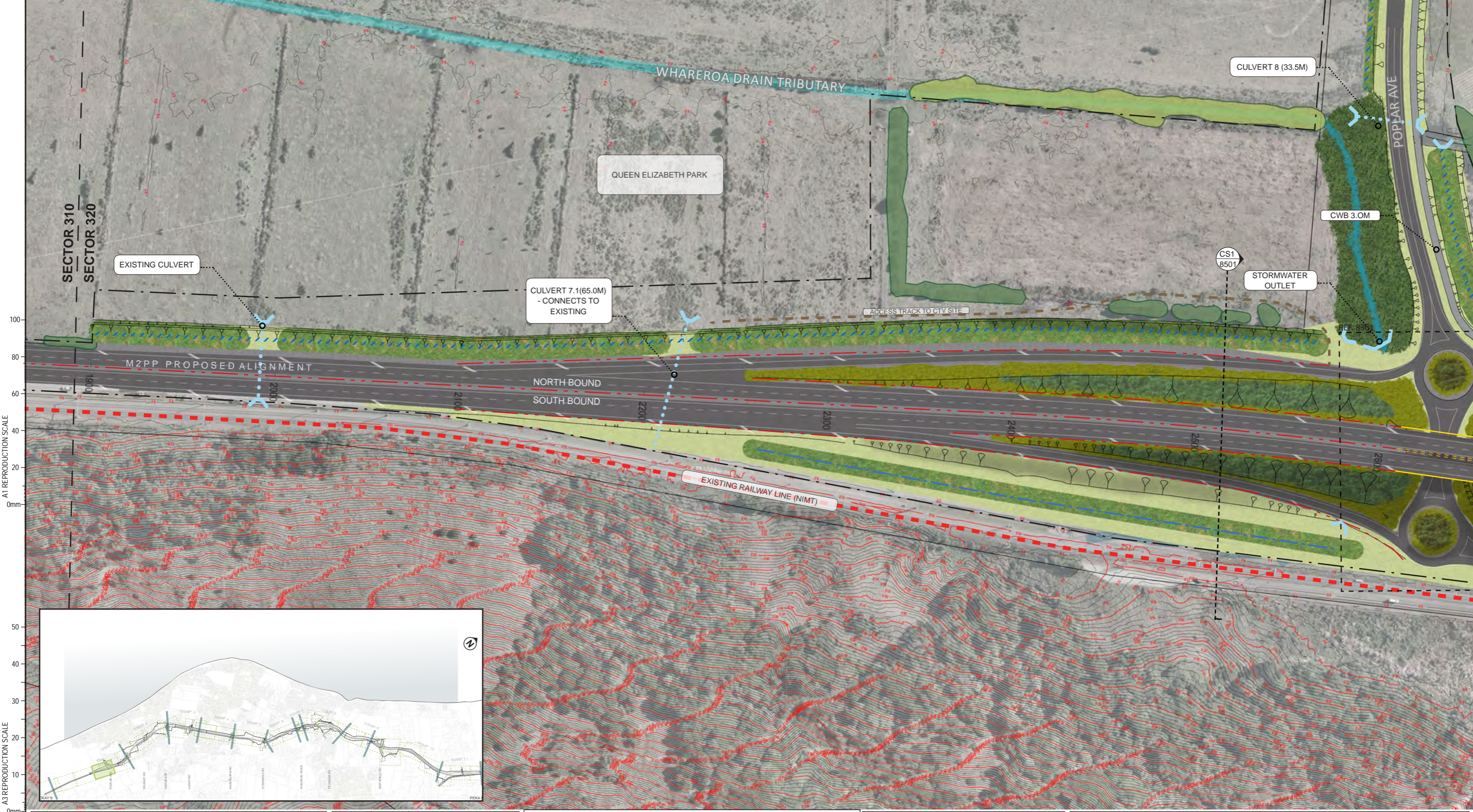
Project	SH1 MACKAYS TO PEKA PEKA EXPRESSWAY
	RP 1012/0.00 TO 1023/5.00

Title	SSMP 1 [320] - SHEET 1
	LOCATION PLAN

Drawing No.	M2PP-121-D-DWG-8000
Rev.	C

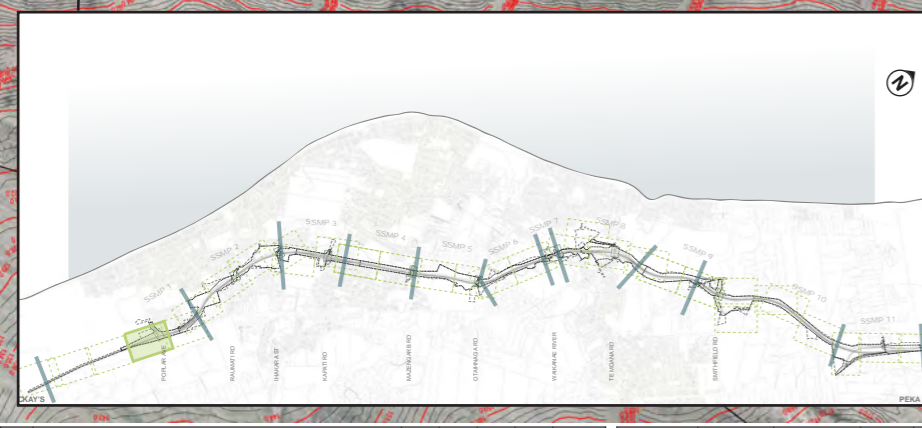


General	Urban Design	Landscape	Ecology	CWB
Designation Boundary	Concrete Bridge Barrier	Individual Retained Trees	Retained Valued Terrestrial Vegetation	Loose Chip CWB
Wire Barrier	Concrete Noise Wall	Retained Vegetation	Retained Valued Wetland Vegetation	Chip Seal CWB
W-Barrier	Culvert Headwall	Grass	Planted Indigenous Terrestrial Habitat	Concrete CWB
Barrier Transition	Retaining Wall	Massed Planting	Planted Indigenous Wetland Habitat	Existing Access Track or CWB
Concrete Traffic Barrier	Bridge Deck	Massed Planting with Tree Enrichment	Stream Mitigation / Riparian Habitat	
Culvert	Bridge Abutment	Wetland / Riparian Planting	Existing Water Body	
Swale	Bridge Piers	Massed planting low	Batter Slope Tadpole	
Planted Swale	2.0m Timber Noise Fence	Specimen Tree		
Flood Storage Area				
Visualisation Viewpoint				



A1 REPRODUCTION SCALE

A3 REPRODUCTION SCALE



No.	Revision	By	Chk	Chk.V	Appd	Date
C	CERTIFIED ISSUE	VB				10/11/14

Original Scale (A1)	Design	LK	11/10/14	Approved For Construction*
1:250	Drawn	VB	11/10/14	Date
Reduced Scale (A3)	Design Verifier			
1:500	Dwg Check			

* Refer to Revision 1 for Original Signature



Project: SH1 MACKAYS TO PEKA PEKA EXPRESSWAY
RP 1012/0.00 TO 1023/5.00

Title: SSMP 1 [320] - SHEET 2 MASTERPLAN

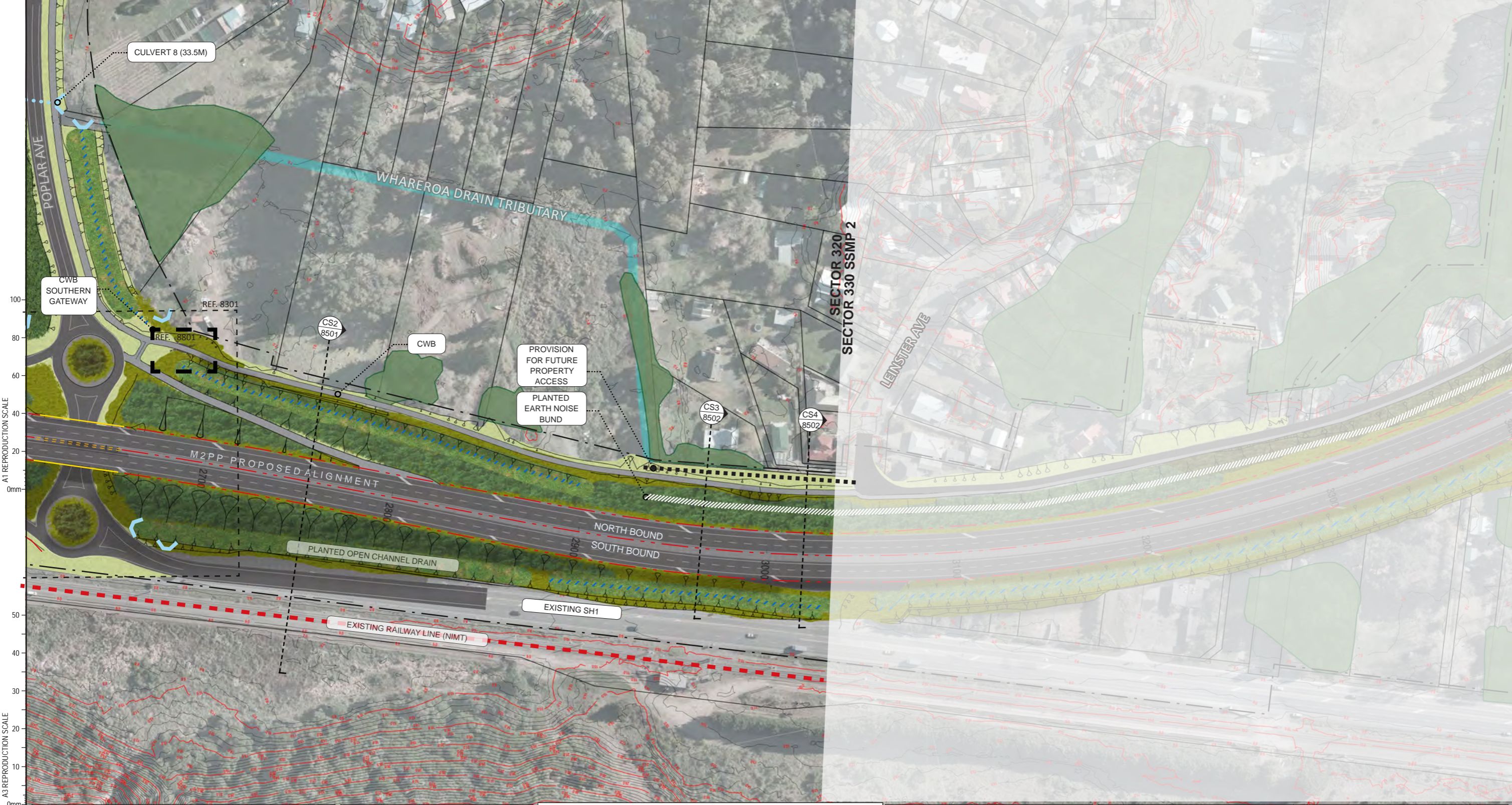
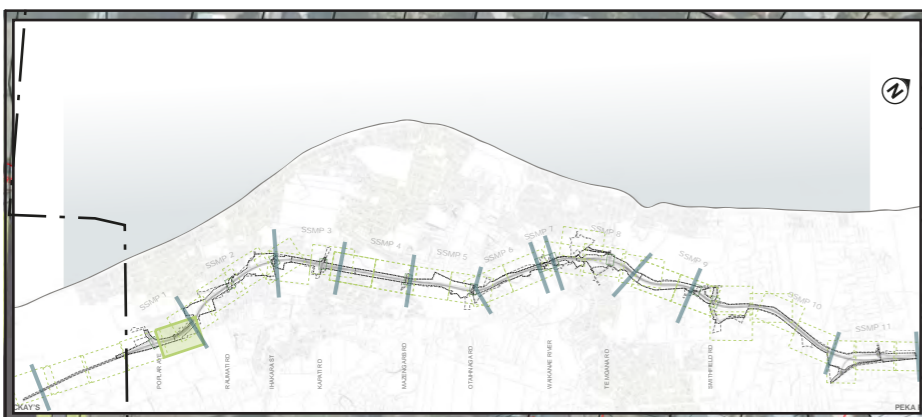
Drawing No: M2PP-121-D-DWG-8101

Rev: C

DETAIL DESIGN (DET)



General	Urban Design	Landscape	Ecology	CWB
--- Designation Boundary	--- Concrete Bridge Barrier	● Individual Retained Trees	■ Retained Valued Terrestrial Vegetation	--- Loose Chip CWB
- - - Wire Barrier	--- Concrete Noise Wall	■ Retained Vegetation	■ Retained Valued Wetland Vegetation	--- Chip Seal CWB
- - - W-Barrier	--- Culvert Headwall	■ Grass	■ Planted Indigenous Terrestrial Habitat	--- Concrete CWB
- - - Barrier Transition	--- Retaining Wall	■ Massed Planting	■ Planted Indigenous Wetland Habitat	--- Existing Access Track or CWB
- - - Concrete Traffic Barrier	--- Bridge Deck	■ Massed Planting with Tree Enrichment	■ Stream Mitigation / Riparian Habitat	
--- Culvert	--- Bridge Abutment	■ Wetland / Riparian Planting	■ Existing Water Body	
--- Swale	--- Bridge Piers	■ Massed planting low	▲ Batter Slope Tadpole	
--- Planted Swale	--- 2.0m Timber Noise Fence	■ Specimen Tree		
● Visualisation Viewpoint				



A1 REPRODUCTION SCALE
0mm

A3 REPRODUCTION SCALE
0mm

DETAIL DESIGN (DET)

No.	Revision	By	Chk	Chk.V	Appd	Date
C	CERTIFIED ISSUE	VB				10/11/14

Original Scale (A1)	Design	LK	11/10/14	Approved For Construction*
1:250	Drawn	VB	11/10/14	Date
Reduced Scale (A3)	Design Verifier			
1:500	Design Check			



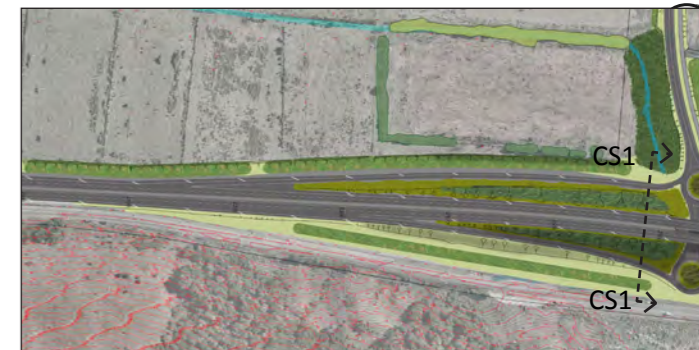
Project SH1 MACKAYS TO PEKA PEKA EXPRESSWAY
RP 1012/0.00 TO 1023/5.00

Title: SSMP 1 [320] - SHEET 3
MASTERPLAN

Drawing No: M2PP-121-D-DWG-8102

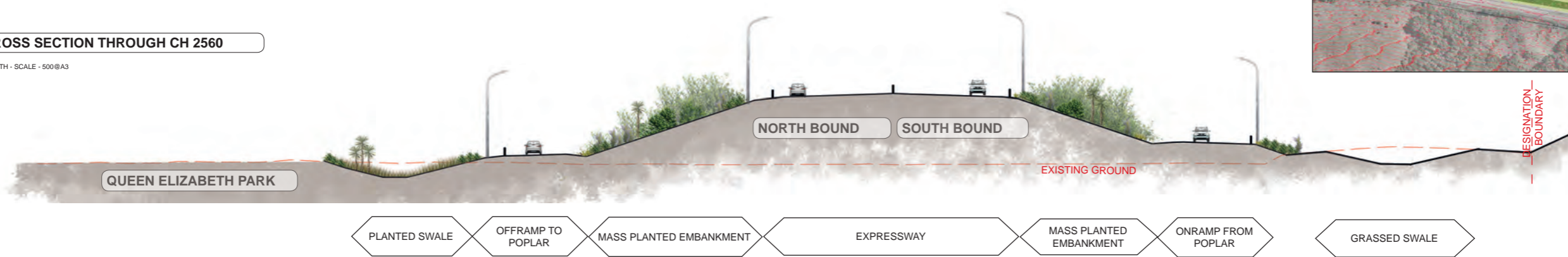
Rev. C

SSMP LOCATION MAP-M2PP-121-D-GPH-8101



CS1 - CROSS SECTION THROUGH CH 2560

FACING NORTH - SCALE - 500@A3



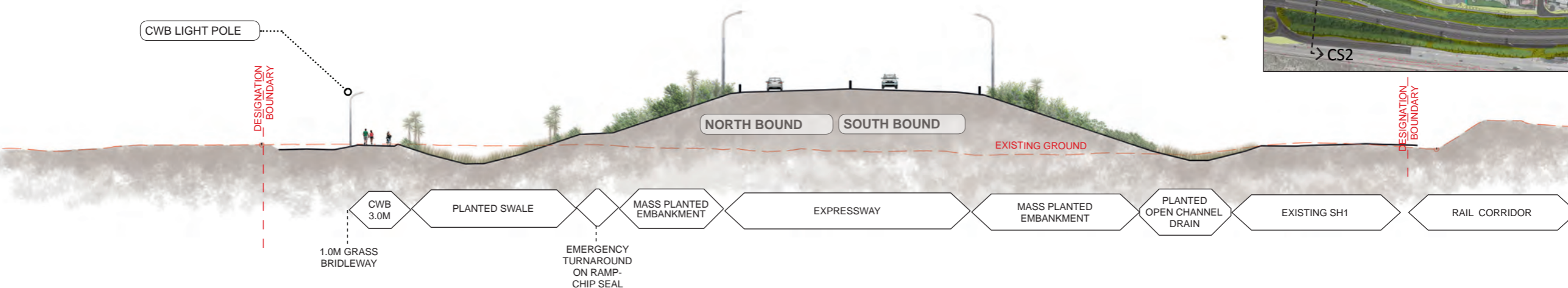
SSMP LOCATION MAP-M2PP-121-D-GPH-8102



CS2 - CROSS SECTION THROUGH CH 2720

FACING NORTH - SCALE - 500@A3

A1 REPRODUCTION SCALE
0mm 20 40 60 80 100



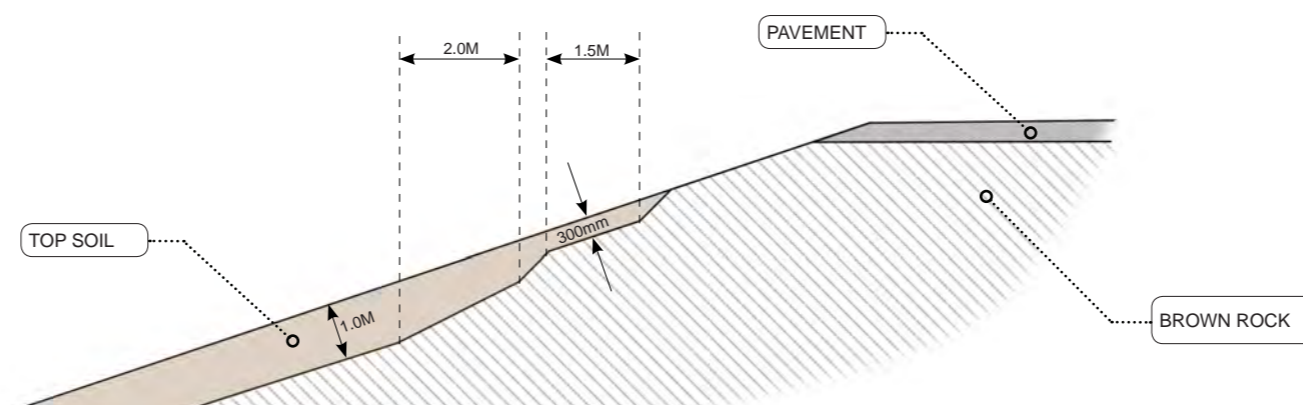
TOPSOIL / PAVEMENT TRANSITION SECTION

FACING NORTH - SCALE - 125@A3

A3 REPRODUCTION SCALE
0mm 10 20 30 40 50

TYPICAL DETAIL WHERE BATTER SLOPE IS 3H : 1V

WHERE THERE IS PEAT PLACEMENT IN LIEU OF FULL DEPTH TOPSOIL, THE TOP 300MM SHALL BE QUALITY TOP SOIL OR PEAT BLEND.



No.	Revision	By	Chk	Chk.V	Appd	Date
C	CERTIFIED ISSUE	VB				10/11/14

Original Scale (A1)	Design	LJK	11/10/14	Approved For Construction*
AS SHOWN	Drawn	VB	11/10/14	
Reduced Scale (A3)	Design Check			
AS SHOWN				

* Refer to Revision 1 for Original Signature



Project: SH1 MACKAYS TO PEKA PEKA EXPRESSWAY
RP 1012/0.00 TO 1023/5.00

Title: SSMP 1 [320] - SHEET 4 SECTIONS

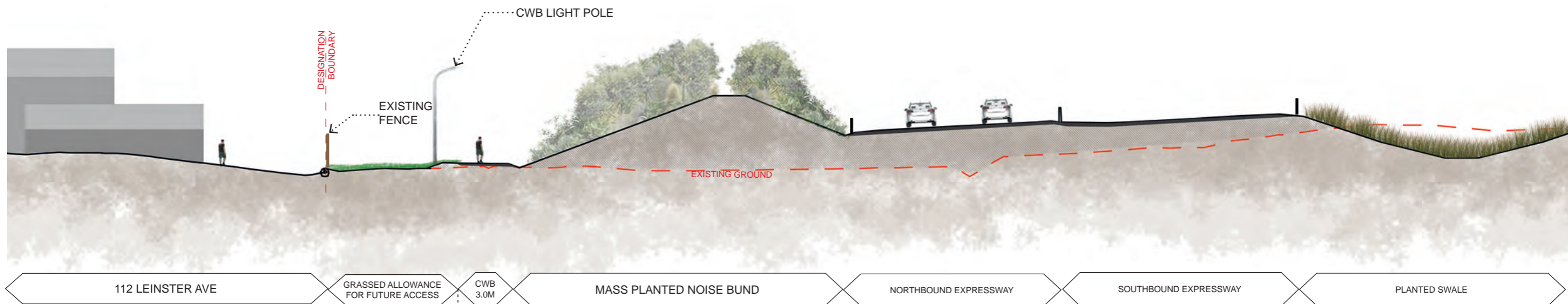
Document No: M2PP-121-D-DWG-8501

Rev: C

DETAIL DESIGN (DET)

CS3 - CROSS SECTION THROUGH CH 2960

FACING NORTH - SCALE - 250@A3

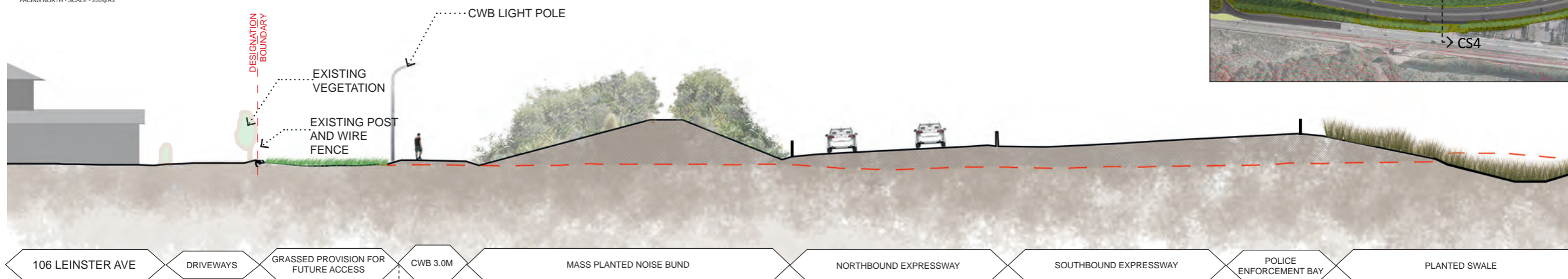


SSMP LOCATION MAP-M2PP-121-D-GPH-8102



CS4 - CROSS SECTION THROUGH CH 3040

FACING NORTH - SCALE - 250@A3



SSMP LOCATION MAP-M2PP-121-D-GPH-8102



A1 REPRODUCTION SCALE

A3 REPRODUCTION SCALE

No.	Revision	By	Chk	Chk.V	Appd	Date
C	CERTIFIED ISSUE	VB				10/11/14

Original Scale (A1)	Design	LJK	11/10/14	Approved For Construction?
AS SHOWN	Drawn	VB	11/10/14	Date
Ridged	Design Check			
Scale (A3)	AS SHOWN			



MacKays to Peka Peka
Wellington Northern Corridor

Project: SH1 MACKAYS TO PEKA PEKA EXPRESSWAY
RP 1012/0.00 TO 1023/5.00

Title: SSMP 1 [320]- SHEET 5 SECTION

Drawing No: M2PP-121-D-DWG-8502

Rev: C

DETAIL DESIGN (DET)

Document No.