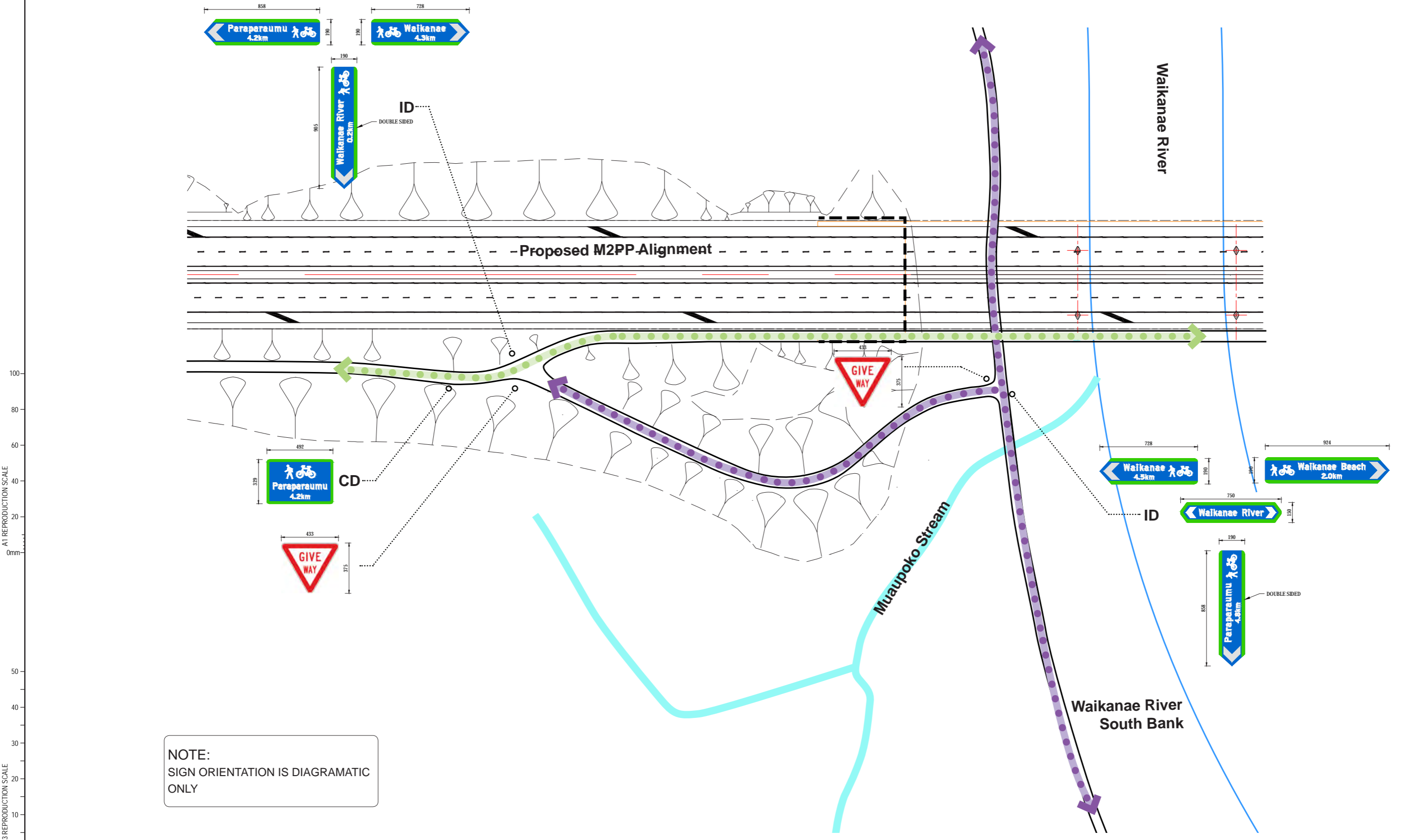


DETAIL PLAN - SIGNAGE - WAIKANAĒ RIVER SOUTH BANK



A1 REPRODUCTION SCALE
0mm 10 20 30 40 50 60 80 100

A3 REPRODUCTION SCALE
0mm 10 20 30 40 50

NOTE:
SIGN ORIENTATION IS DIAGRAMATIC
ONLY

| | | | | | |
|-----|--|----|-----|-------|----------|
| C | FOR CERTIFICATION (WITH REQUESTED ALTERATIONS) | | | | 13.12.13 |
| B | FOR CERTIFICATION | | | | 28.11.13 |
| A | PRELIMINARY ISSUE | | | | 12.09.13 |
| No. | Revision | By | Chk | Chk.V | Appd |

| | | |
|---------------------|--|----------------------------|
| Original Scale (A1) | Design | Approved For Construction* |
| 1:500 | Drawn | Date |
| Reduced Scale (A3) | Drawn Verifier | |
| 1:1000 | Drawn Check | |
| | * Refer to Revision 1 for Original Signature | |

Mackays to Peka Peka

Project: SH1 MACKAYS TO PEKA PEKA EXPRESSWAY
RP 1012/0.00 TO 1023/5.00

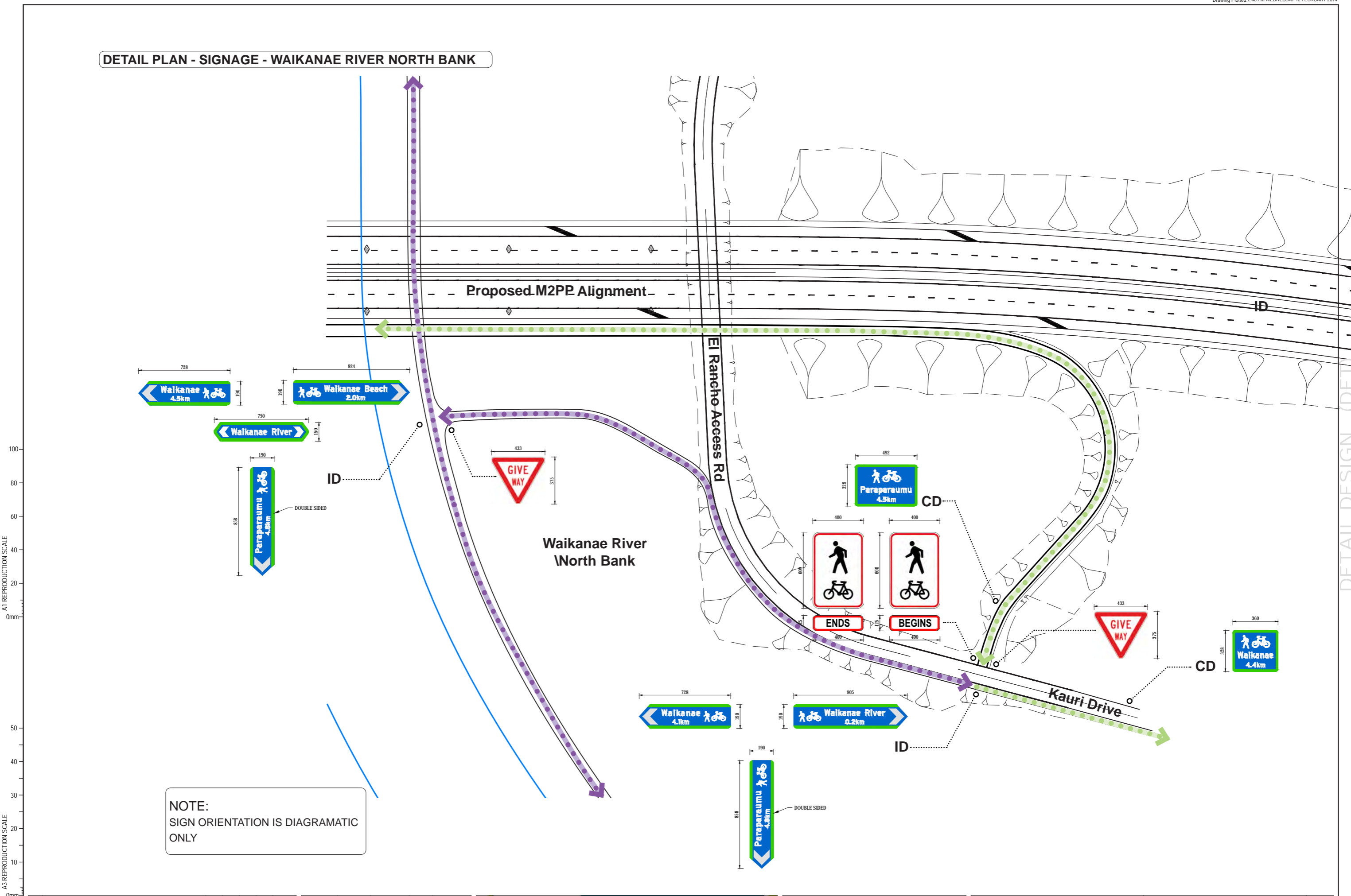
Title: SSMP 7 - SHEET 14
SOUTH BANK CWB SIGNAGE

Drawing No: M2PP-121-D-GPH-8902

Rev. C

DETAIL DESIGN (DET)

DETAIL PLAN - SIGNAGE - WAIKANAĒ RIVER NORTH BANK



NOTE:
SIGN ORIENTATION IS DIAGRAMATIC ONLY

A1 REPRODUCTION SCALE
0mm 20 40 60 80 100

A3 REPRODUCTION SCALE
0mm 10 20 30 40 50

DETAIL DESIGN (DET)

| | | | | | |
|-----|--|----|-----|-------|----------|
| C | FOR CERTIFICATION (WITH REQUESTED ALTERATIONS) | | | | 13.12.13 |
| B | FOR CERTIFICATION | | | | 28.11.13 |
| A | PRELIMINARY ISSUE | | | | 12.09.13 |
| No. | Revision | By | Chk | Chk.V | Appd |

| | | |
|---------------------|----------------|----------------------------|
| Original Scale (A1) | Design | Approved For Construction? |
| 1:500 | Drawn | Date |
| Reduced Scale (A3) | Design Checker | |
| 1:1000 | Checked | |

Project: SH1 MACKAYS TO PEKA PEKA EXPRESSWAY
RP 1012/0.00 TO 1023/5.00

Title: SSMP 7 - SHEET 15
NORTH BANK CWB SIGNAGE

Drawing No: M2PP-121-D-GPH-8903

Rev: C

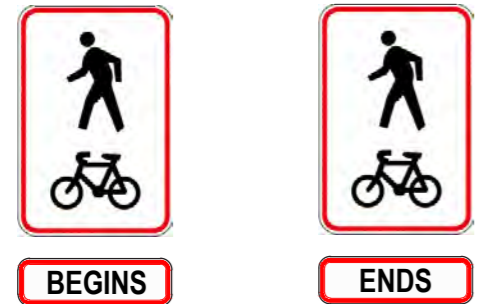
AI - ADVANCED INFO SIGNS

AT START OF ROUTE.
INCLUDES:

- MAP & INFO
- LENGTH & DURATION OF RIDE / WALK

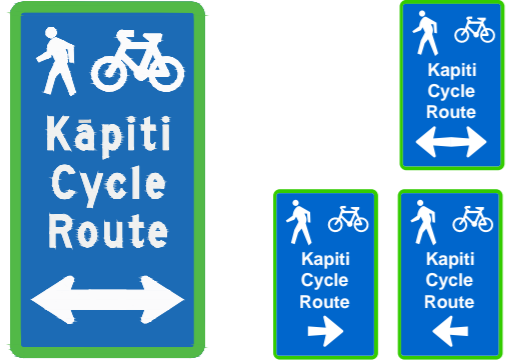
AI - Advance Information Signs are not an essential requirement for public access tracks or cycle routes, nor are they standardised in terms of their design and layout. These signs may, if desired and appropriate, be installed at or near the start point of the route to provide detailed information, such as a map and information about the length and duration to ride etc. These signs should be clearly visible from the road, allowing cyclists and pedestrians a safe place to stop clear of the roadway or cycleway to read the information.

BE - BEGINNING AND ENDING SIGNS



BE - Begins/Ends Signs are used to indicate the start and/or end point of a cycle route. They will include route specific information. Route Begins Signs should be installed on the left hand side of the CWB immediately beyond or adjacent to any advance information sign or at a logical starting point for the cycle route.

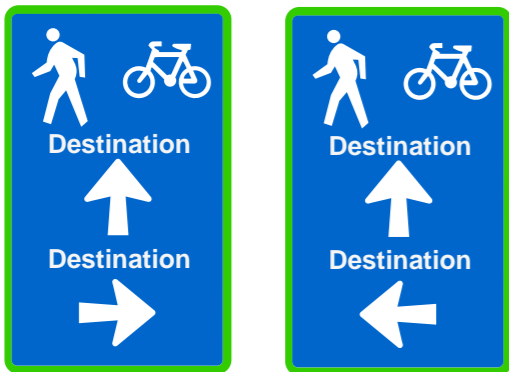
AD01 - ADVANCED DIRECTION SIGN - ON LOCAL ROAD APPROACHING CWB



AD - The purpose of the Advance Direction Sign is to give cyclists prior warning, to enable them to make decisions and, if necessary, place themselves in the best position to make any change in direction required before they reach the intersection. These signs should be used in any situation where the cyclist could easily miss making a required turn at an approaching intersection.

To occur 40-60m in advance of an intersection and should only include information about the destination, not the distance.

AD - ADVANCED DIRECTION - ON CWB



AD - The purpose of the Advance Direction Sign is to give cyclists prior warning, to enable them to make decisions and, if necessary, place themselves in the best position to make any change in direction required before they reach the intersection. These signs should be used in any situation where the cyclist could easily miss making a required turn at an approaching intersection.

To occur 40-60m in advance of an intersection and should only include information about the destination, not the distance.

ID - INTERSECTION DIRECTION



ID - The Intersection Direction Sign is located at or as near as possible to the actual intersection. Should include both information about the destination and the distance.

Multiple signs and destinations to be on one post

CD - CONFIRMATION DIRECTION



CD - The Confirmation Direction Sign is used to confirm the direction/destination of travel after an intersection it is intended to provide assurance to cyclists. The CD sign features a straight ahead arrow and should include both information about the destination and the distance.

As a general rule of thumb, these signs should be installed; between 20-50m beyond an intersection where an Advance Direction Sign has been used and should generally be visible from that intersection;

Cyclists should see a CD sign at least every 15-30 minutes of typical cyclist travel, or every 5-10 km.

LOCAL ROAD INTERSECTION SIGNS



LR + GW - Local road (LR) and Giveaway (GW) signs should be used where the CWB crosses a local road. These are to be located at or as near as possible to the actual intersection. Where possible the LR should be kept to one per intersection and be able to be read by people on either side of the intersection. Both the LR and GW should share the same post and or be incorporated onto an existing post.

A1 REPRODUCTION SCALE

A3 REPRODUCTION SCALE

| | | | | | | |
|-----|--|----|-----|-------|------|----------|
| C | FOR CERTIFICATION (WITH REQUESTED ALTERATIONS) | | | | | 13.12.13 |
| B | FOR CERTIFICATION | | | | | 28.11.13 |
| A | PRELIMINARY ISSUE | - | | | | 12.09.13 |
| No. | Revision | By | Chk | Chk.V | Appd | Date |

| | | |
|---------------------|-----------------|----------------------------|
| Original Scale (A1) | Design | Approved For Construction? |
| NTS | Drawn | Date |
| Reduced Scale (A3) | Design Verifier | |
| NTS | Design Check | |

* Refer to Revision 1 for Original Signature

Mackays to Peka Peka

Project: SH1 MACKAYS TO PEKA PEKA EXPRESSWAY
RP 1012/0.00 TO 1023/5.00

Title: SSMP 7 - SHEET 16
CWB SIGN TYPES

Drawing No: M2PP-121-D-GPH-8901
Rev: C

DETAIL DESIGN (DET)

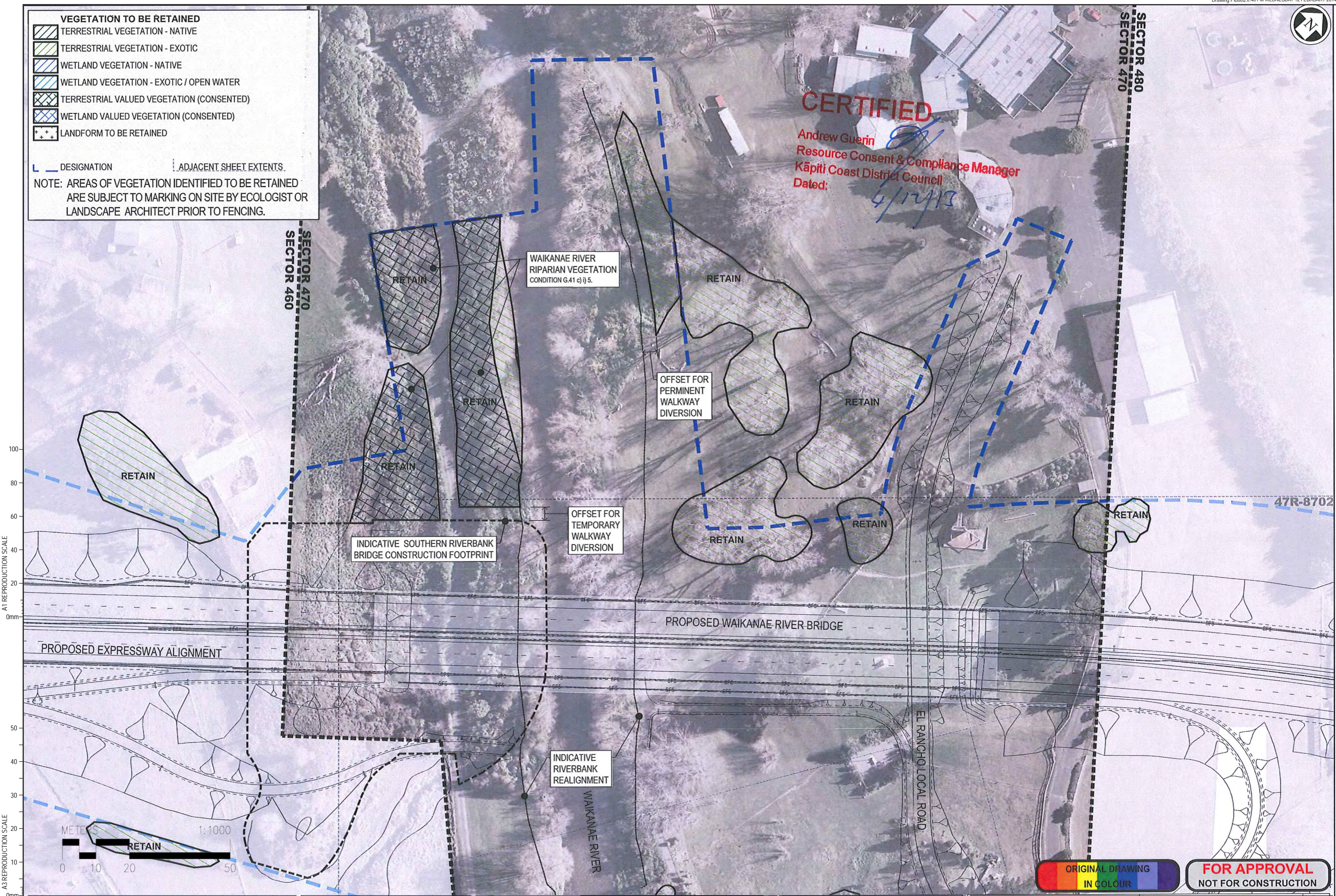


VEGETATION TO BE RETAINED

- TERRESTRIAL VEGETATION - NATIVE
- TERRESTRIAL VEGETATION - EXOTIC
- WETLAND VEGETATION - NATIVE
- WETLAND VEGETATION - EXOTIC / OPEN WATER
- TERRESTRIAL VALUED VEGETATION (CONSENTED)
- WETLAND VALUED VEGETATION (CONSENTED)
- LANDFORM TO BE RETAINED

DESIGNATION ADJACENT SHEET EXTENTS.

NOTE: AREAS OF VEGETATION IDENTIFIED TO BE RETAINED ARE SUBJECT TO MARKING ON SITE BY ECOLOGIST OR LANDSCAPE ARCHITECT PRIOR TO FENCING.



A1 REPRODUCTION SCALE
0mm 20 40 60 80 100

A3 REPRODUCTION SCALE
0mm 10 20 30 40 50

| | | | | | |
|-----|--|----|-----|-------|----------|
| C | FOR CERTIFICATION (WITH REQUESTED ALTERATIONS) | | | | 13.12.13 |
| B | FOR CERTIFICATION | | | | 28.11.13 |
| A | PRELIMINARY ISSUE | | | | 12.09.13 |
| No. | Revision | By | Chk | Chk.V | Appd |

| | | |
|---------------------|----------------|----------------------------|
| Original Scale (A1) | Design | Approved For Construction? |
| 1:500 | Drawn | |
| Reduced Scale (A3) | Drawn Verifier | Date |
| 1:1000 | Drawn Check | |

* Refer to Revision 1 for Original Signature



Mackays to Peka Peka

Project: SH1 MACKAYS TO PEKA PEKA EXPRESSWAY
RP 1012/0.00 TO 1023/5.00

Title: SSMP 7 - SHEET 17
VEGETATION TO BE RETAINED

Document No: M2PP-47R-D-DWG-8701

Rev: C



FOR APPROVAL
NOT FOR CONSTRUCTION

DETAIL DESIGN (DET)

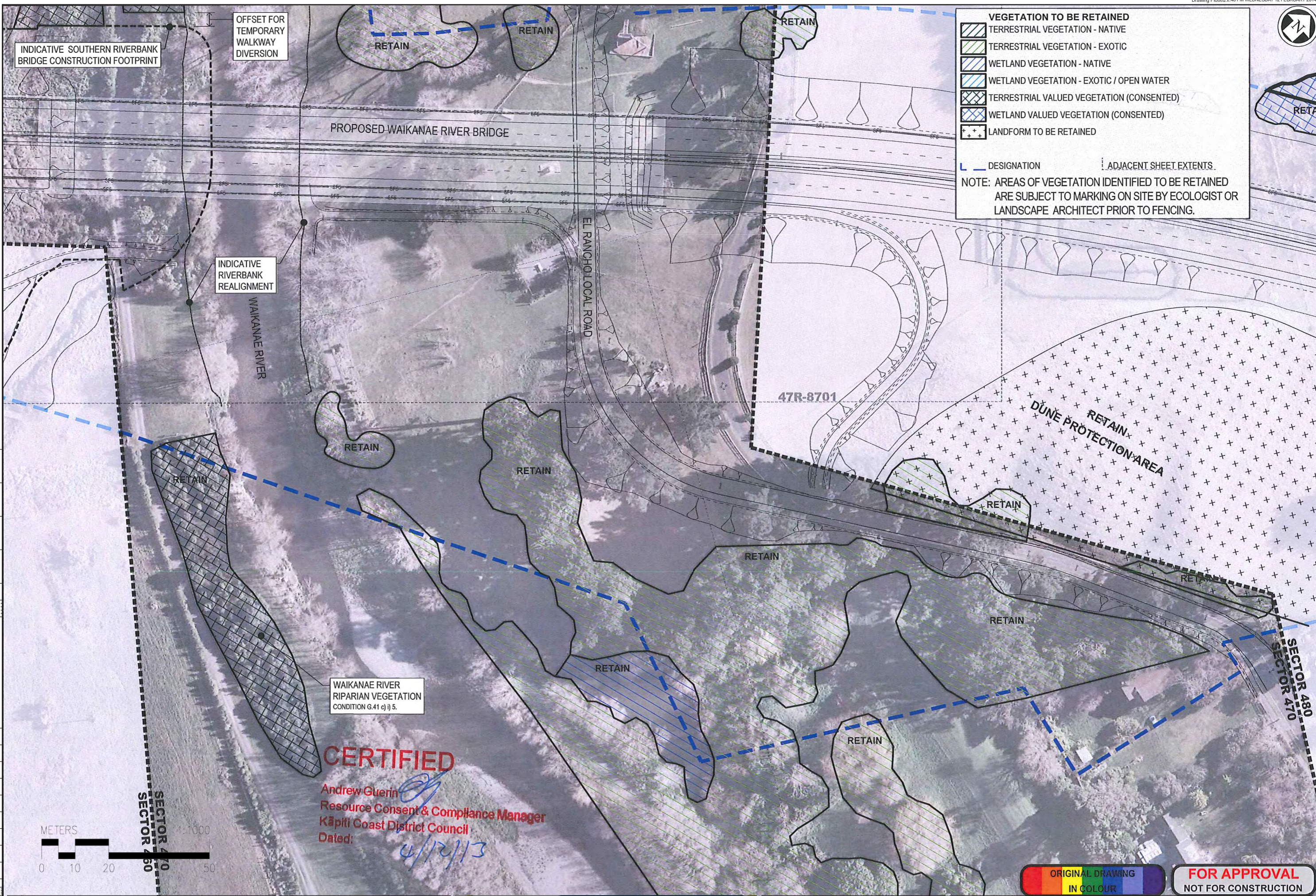


VEGETATION TO BE RETAINED

- TERRESTRIAL VEGETATION - NATIVE
- TERRESTRIAL VEGETATION - EXOTIC
- WETLAND VEGETATION - NATIVE
- WETLAND VEGETATION - EXOTIC / OPEN WATER
- TERRESTRIAL VALUED VEGETATION (CONSENTED)
- WETLAND VALUED VEGETATION (CONSENTED)
- LANDFORM TO BE RETAINED

DESIGNATION ADJACENT SHEET EXTENTS.

NOTE: AREAS OF VEGETATION IDENTIFIED TO BE RETAINED ARE SUBJECT TO MARKING ON SITE BY ECOLOGIST OR LANDSCAPE ARCHITECT PRIOR TO FENCING.



A1 REPRODUCTION SCALE
0mm

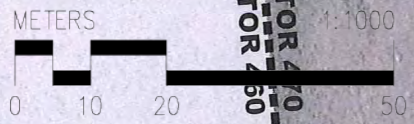
A3 REPRODUCTION SCALE
0mm

SECTOR 470
SECTOR 460

SECTOR 480
SECTOR 470

WAIKANA RIVER
RIPARIAN VEGETATION
CONDITION G.41 c) 1) 5.

CERTIFIED
Andrew Guerin
Resource Consent & Compliance Manager
Kapiti Coast District Council
Dated: 4/12/13



ORIGINAL DRAWING
IN COLOUR

FOR APPROVAL
NOT FOR CONSTRUCTION

| | | | | | |
|-----|--|----|-----|-------|----------|
| C | FOR CERTIFICATION (WITH REQUESTED ALTERATIONS) | | | | 13.12.13 |
| B | FOR CERTIFICATION | | | | 28.11.13 |
| A | PRELIMINARY ISSUE | | | | 12.09.13 |
| No. | Revision | By | Chk | Chk.V | Appd |

| | | |
|---------------------|----------------|----------------------------|
| Original Scale (A1) | Design | Approved For Construction* |
| 1:500 | Drawn | |
| Reduced Scale (A3) | Drawn Verifier | |
| 1:1000 | Drawn Check | |
| | Date | |



Mackays to Peka Peka

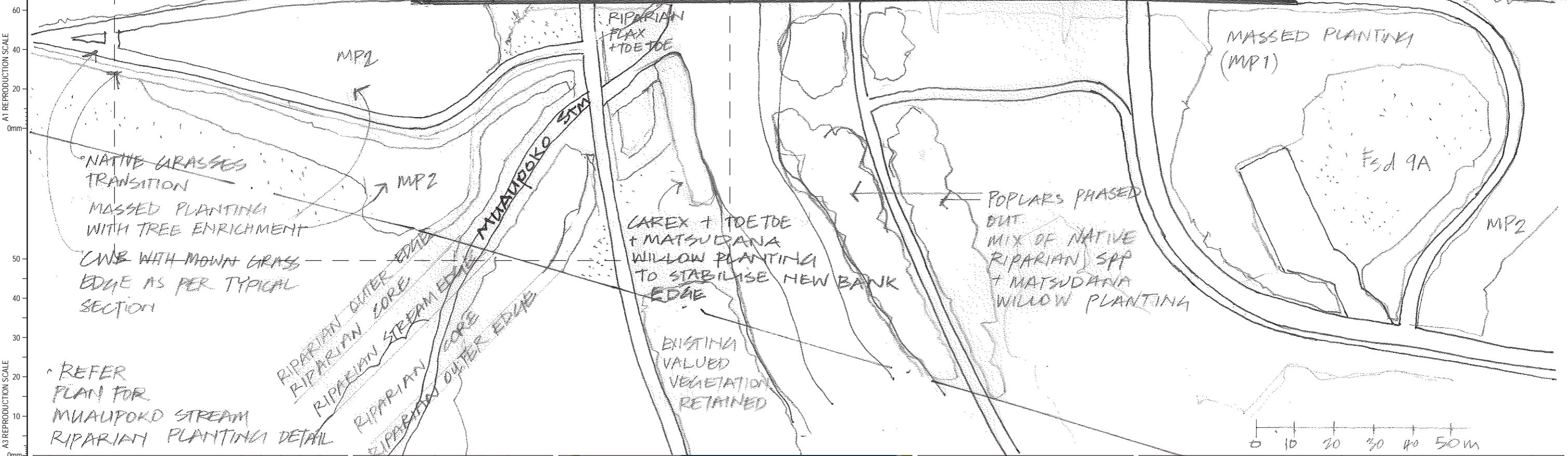
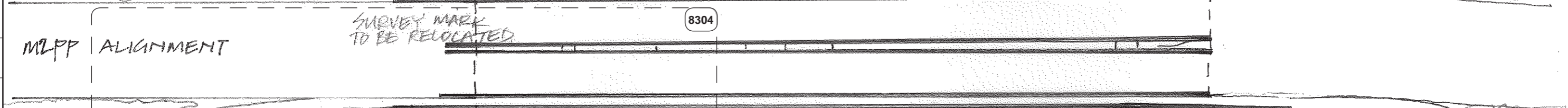
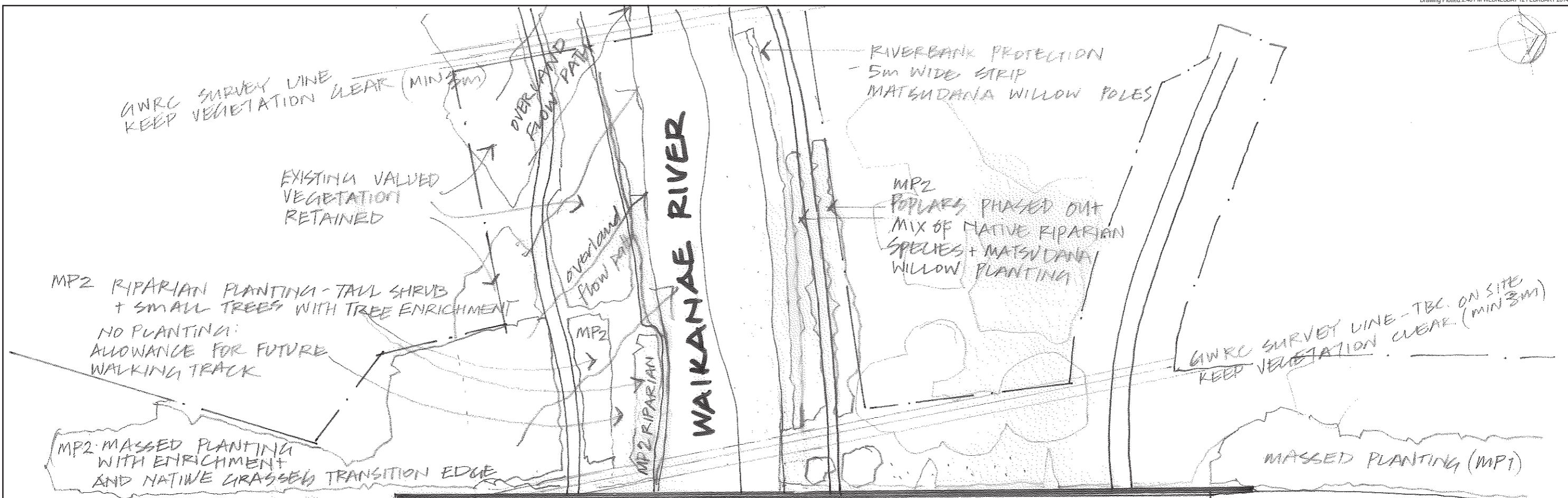
Project: SH1 MACKAYS TO PEKA PEKA EXPRESSWAY
RP 1012/0.00 TO 1023/5.00

Title: SSMP 7 - SHEET 18
VEGETATION TO BE RETAINED

Drawing No: M2PP-47R-D-DWG-8702

Rev: C

DETAIL DESIGN (DET)



A1 REPRODUCTION SCALE
0mm

A3 REPRODUCTION SCALE
0mm

| | | | | | |
|-----|--|----|-----|-------|----------|
| C | FOR CERTIFICATION (WITH REQUESTED ALTERATIONS) | | | | 13.12.13 |
| B | FOR CERTIFICATION | | | | 28.11.13 |
| A | PRELIMINARY ISSUE | | | | 12.09.13 |
| No. | Revision | By | CHK | CHK.V | Appd |

| | | | |
|---------------------|-----------------|----|---------------------------|
| Original Scale (A1) | Design | SD | Approved For Construction |
| NTS | Drawn | SD | 23.08.13 |
| Reduced Scale (A3) | Design Verifier | | |
| NTS | Design Check | | |

NZ TRANSPORT AGENCY
Mackays to Peka Peka

Project: SH1 MACKAYS TO PEKA PEKA EXPRESSWAY
 RP 1012/0.00 TO 1023/5.00

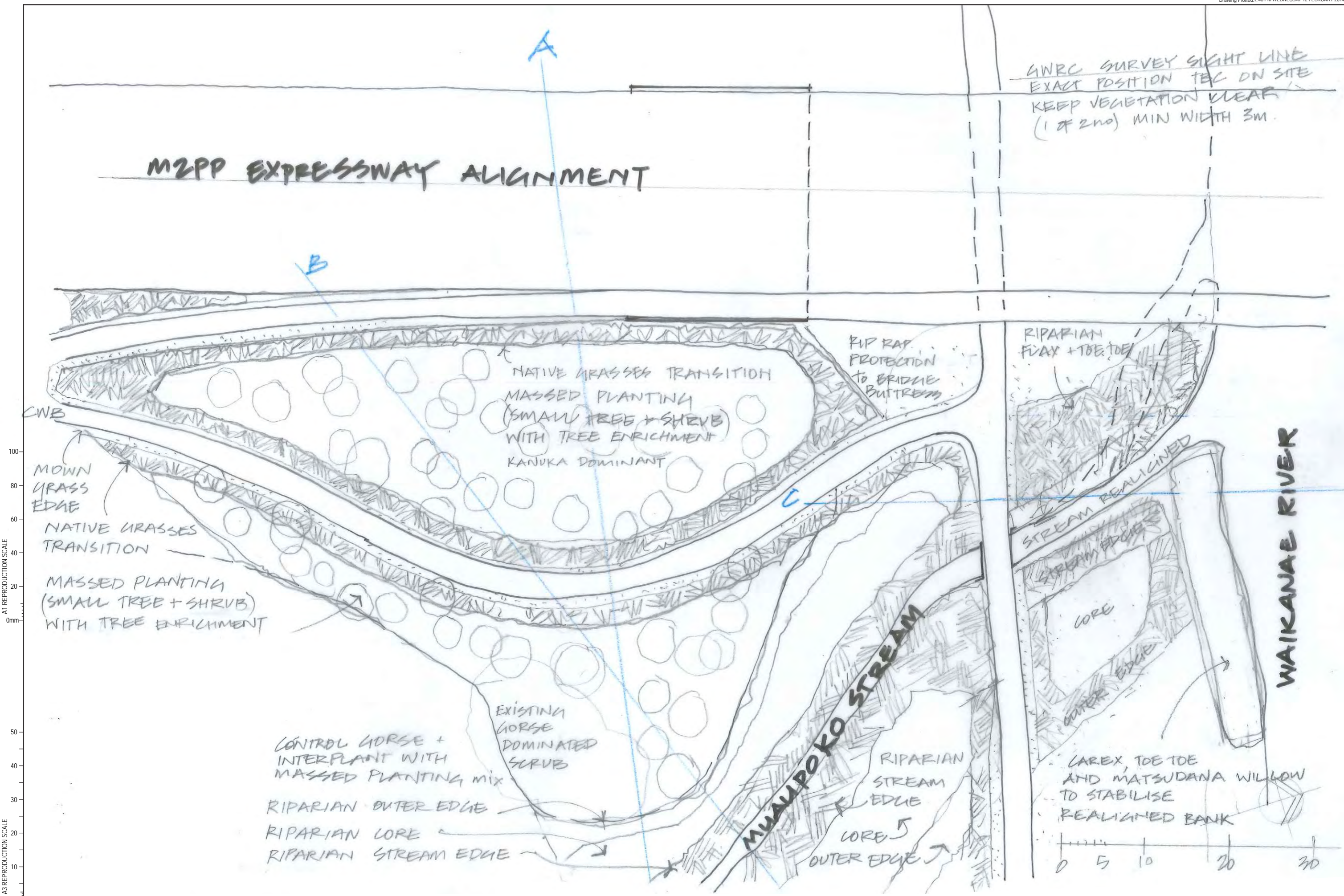
Title: SSMP 7 - SHEET 19 PLANTING PLAN

Document No: M2PP-121-D-GPH-8201
 Rev: C

DETAIL DESIGN (DET)

M2PP EXPRESSWAY ALIGNMENT

GNRC SURVEY SIGHT LINE
EXACT POSITION TEC ON SITE
KEEP VEGETATION CLEAR
(1 of 2nd) MIN WIDTH 3m.



A1 REPRODUCTION SCALE
0mm

A3 REPRODUCTION SCALE
0mm



| | | | | | |
|-----|--|----|-----|-------|----------|
| C | FOR CERTIFICATION (WITH REQUESTED ALTERATIONS) | | | | 13.12.13 |
| B | FOR CERTIFICATION | | | | 28.11.13 |
| A | PRELIMINARY ISSUE | | | | 12.09.13 |
| No. | Revision | By | Chk | Chk.V | Appd |

| | | | |
|---------------------|-----------------|----|----------------------------|
| Original Scale (A1) | Design | FB | Approved For Construction* |
| NTS | Drawn | MP | 23.06.13 |
| Reduced Scale (A3) | Design Verifier | | |
| NTS | Design Check | | |



Mackays to Peka Peka

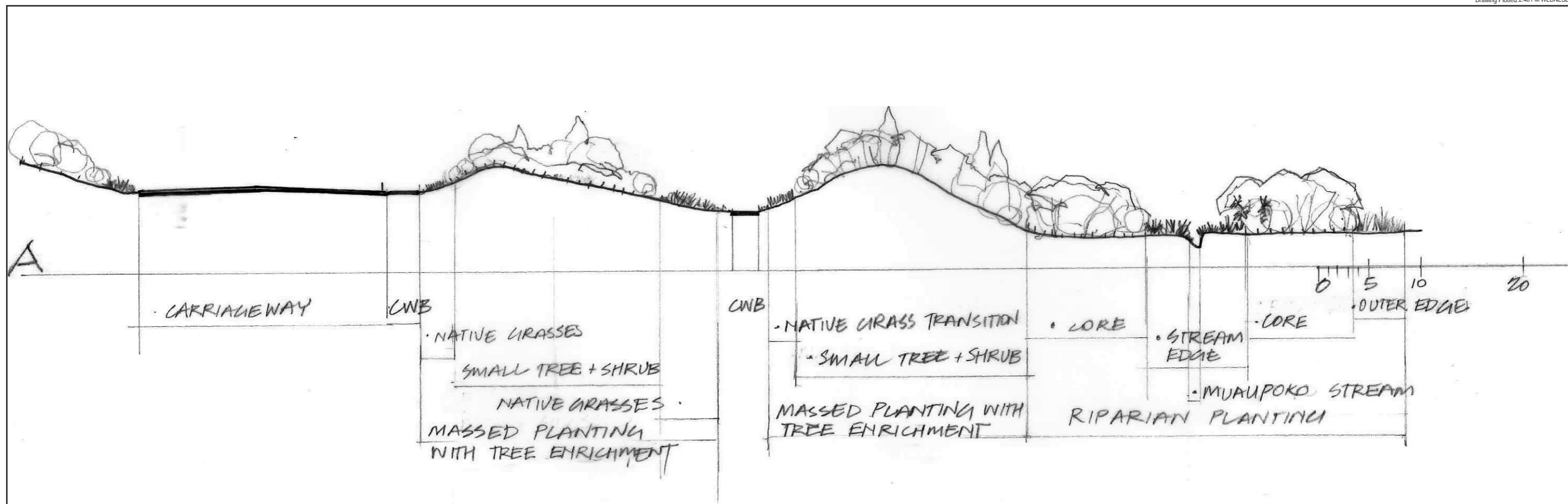
Project: SH1 MACKAYS TO PEKA PEKA EXPRESSWAY
RP 1012/0.00 TO 1023/5.00

Title: SSMP 7 - SHEET 20
PLANTING DETAIL PLAN
SOUTHERN ABUTMENT

Drawing No: M2PP-121-D-GPH-8304

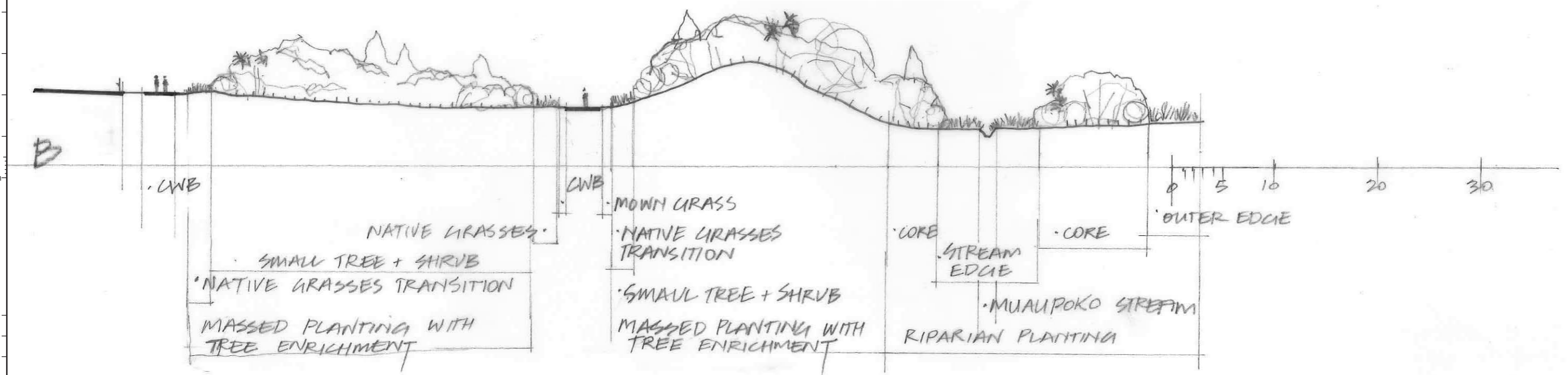
Rev: C

DETAIL DESIGN (DET)



A1 REPRODUCTION SCALE

A3 REPRODUCTION SCALE



DETAIL DESIGN (DET)

| | | | | | |
|-----|--|----|-----|-------|----------|
| C | FOR CERTIFICATION (WITH REQUESTED ALTERATIONS) | | | | 13.12.13 |
| B | FOR CERTIFICATION | | | | 28.11.13 |
| A | PRELIMINARY ISSUE | | | | 12.09.13 |
| No. | Revision | By | Chk | Chk.V | Appd |

| | | | |
|---------------------|-----------------|----|----------------------------|
| Original Scale (A1) | Design | FB | Approved For Construction* |
| NTS | Drawn | MP | 23.06.13 |
| Reduced Scale (A3) | Design Verifier | | |
| NTS | Design Check | | |

* Refer to Revision 1 for Original Signature

NZ TRANSPORT AGENCY

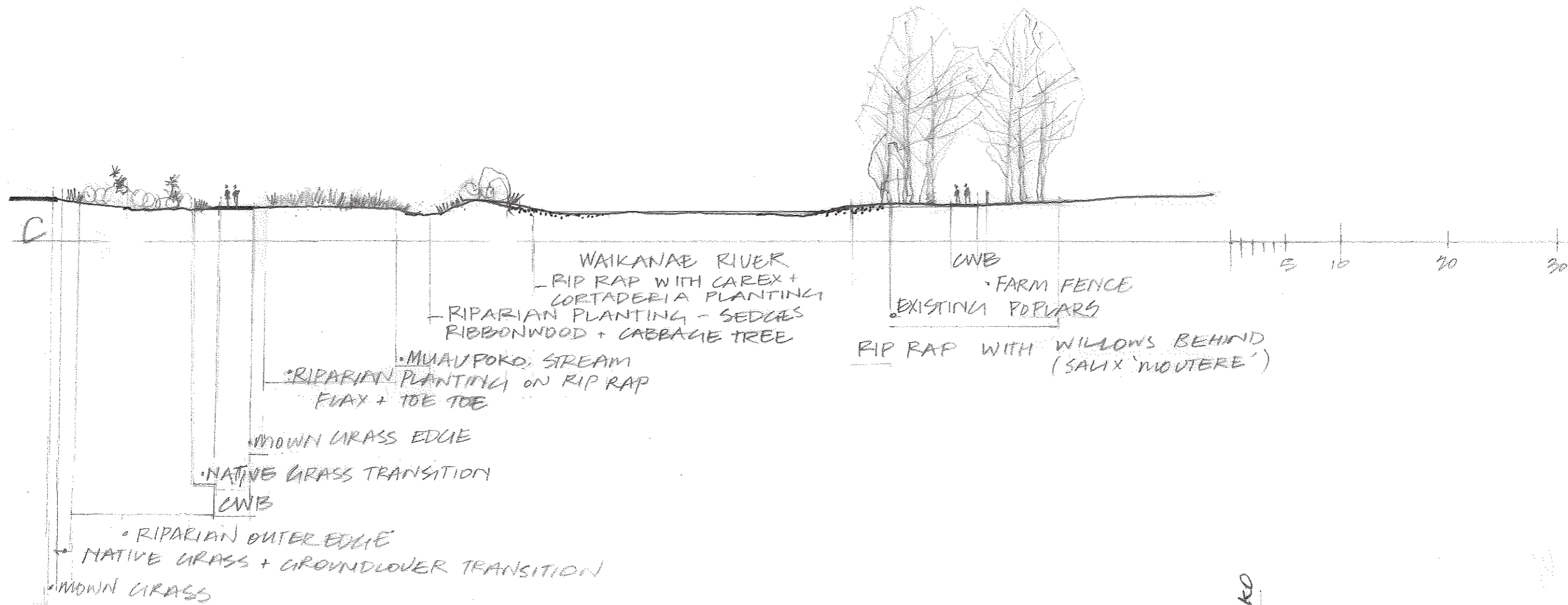
Mackays to Peka Peka

Project: SH1 MACKAYS TO PEKA PEKA EXPRESSWAY
RP 1012/0.00 TO 1023/5.00

Title: SSMP 7 - SHEET 21 PLANTING SECTIONS

Drawing No: M2PP-121-D-GPH-8411

Rev: C

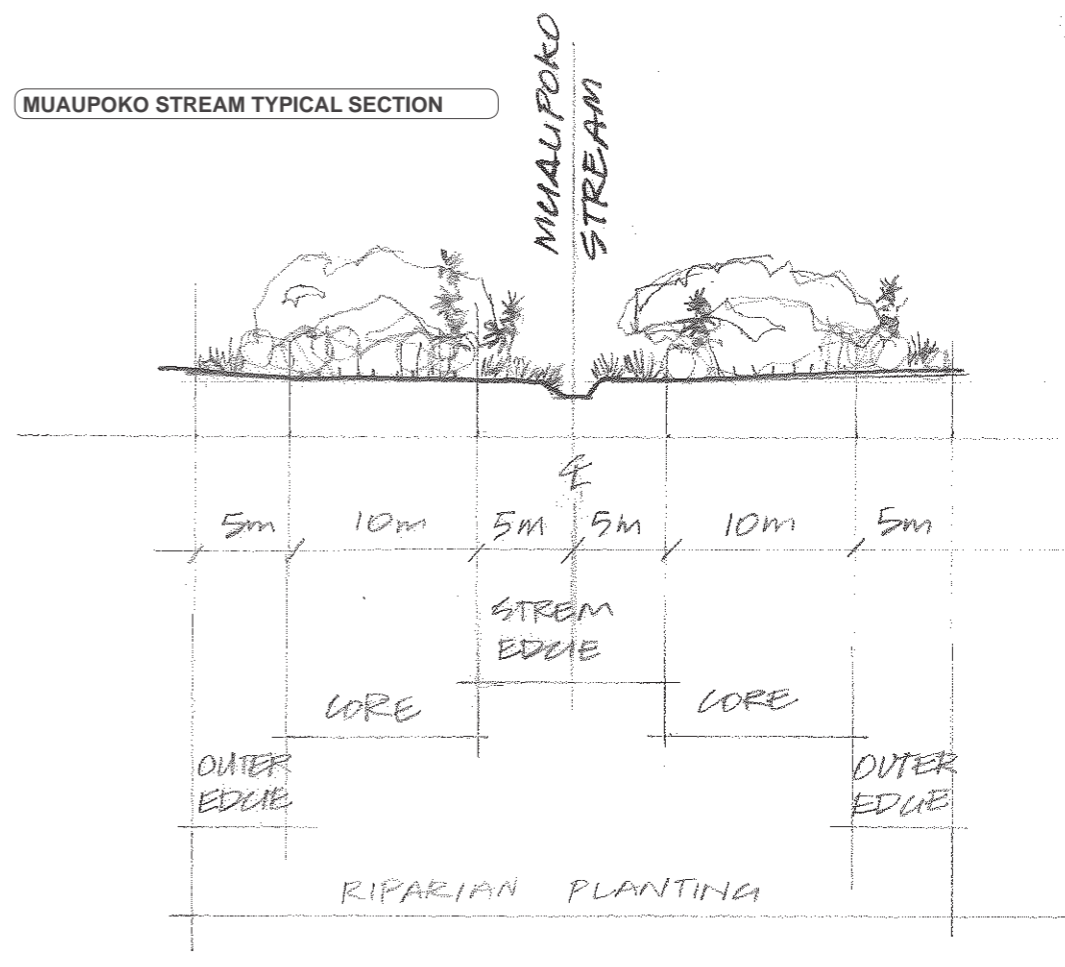
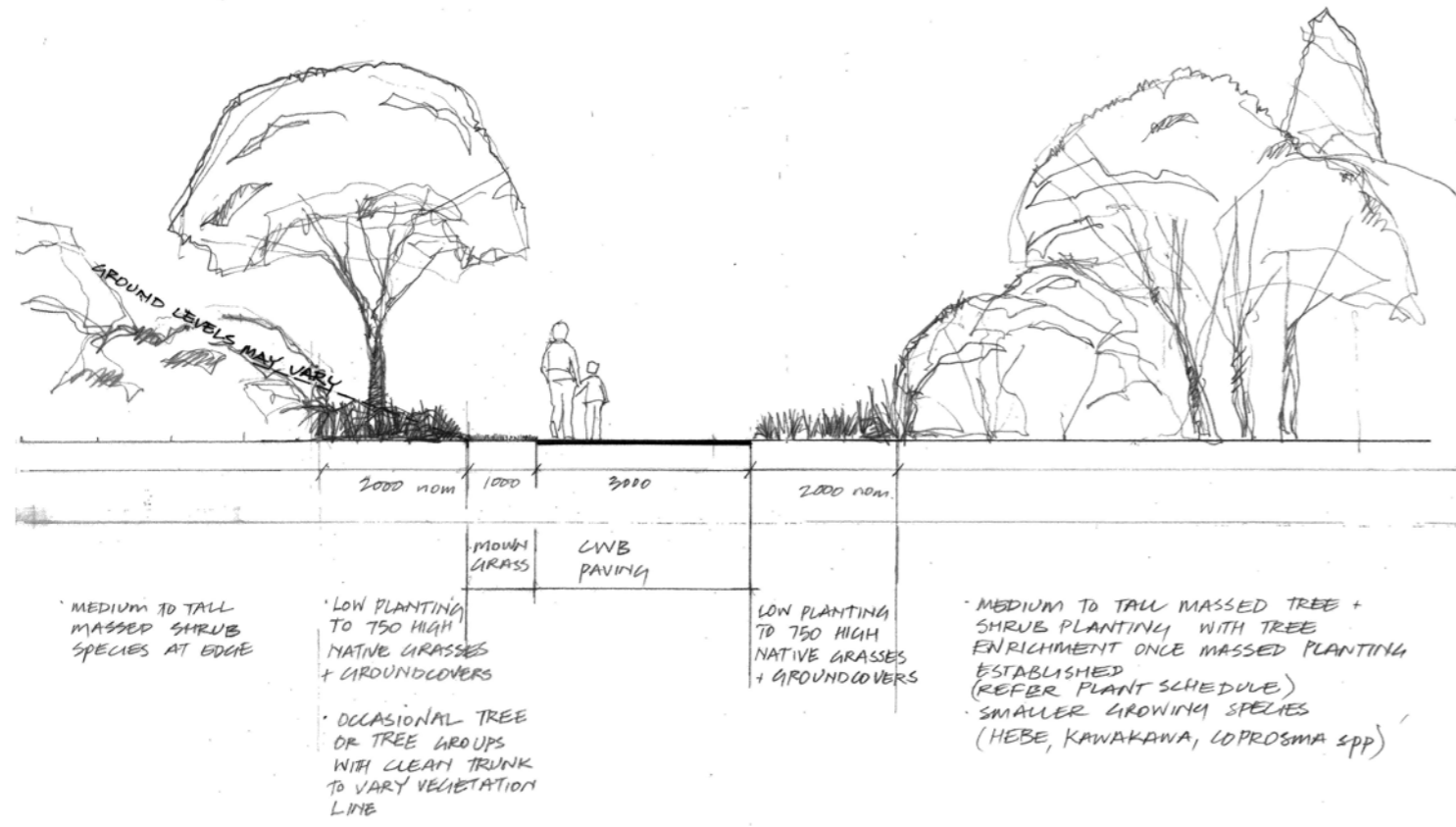


CWB TYPICAL PLANTING SECTION

MUAUPOKO STREAM TYPICAL SECTION

A1 REPRODUCTION SCALE

A3 REPRODUCTION SCALE



| | | | | | |
|-----|--|----|-----|-------|----------|
| C | FOR CERTIFICATION (WITH REQUESTED ALTERATIONS) | | | | 13.12.13 |
| B | FOR CERTIFICATION | | | | 28.11.13 |
| A | PRELIMINARY ISSUE | | | | 12.09.13 |
| No. | Revision | By | Chk | Chk.V | Appd |

| | | | |
|---------------------|-----------------|----------|---------------------------|
| Original Scale (A1) | Design | FB | Approved For Construction |
| Drawn | MP | 23.06.13 | |
| Reduced Scale (A3) | Design Verifier | | |
| NTS | Design Check | | |

| | |
|---------|--|
| Project | SH1 MACKAYS TO PEKA PEKA EXPRESSWAY RP 1012/0.00 TO 1023/5.00 |
|---------|--|

| | |
|-------|--|
| Title | SSMP 7 - SHEET 22 PLANTING SECTIONS & DETAILS |
|-------|--|

| | |
|-------------|---------------------|
| Drawing No. | M2PP-121-D-GPH-8412 |
|-------------|---------------------|

| | |
|------|---|
| Rev. | C |
|------|---|

DETAIL DESIGN (DET)

SSMP7 WAIKANAE RIVER PLANT SCHEDULE

| Botanical name | Common name | % | Grade | Crs |
|--|----------------|----|-------|-----|
| MUAUPOKO STREAM RIPARIAN PLANTING | | | | |
| Stream edge | | | | |
| Austroderia fulvida | (toe toe) | 20 | 0.5L | 1m |
| Carex secta | (pukio) | 20 | 0.5L | 1m |
| Phormium tenax | (harakeke) | 60 | 0.5L | 1m |
| Core | | | | |
| Dysoxylum spectabile | (kohekohe) | 10 | 1.0L | 1m |
| Carpodetus serrata | (putaputaweta) | 10 | 1.0L | 1m |
| Cordyline australis | (ti kouka) | 15 | 1.0L | 1m |
| Macropiper excelsum | (kawakawa) | 10 | 1.0L | 1m |
| Melicope ternata | (wharangi) | 5 | 1.0L | 1m |
| Melicytus ramiflorus | (mahoe) | 10 | 1.0L | 1m |
| Myrsine australis | (red mapou) | 15 | 1.0L | 1m |
| Plagianthus regius | Ribbonwood | 15 | 1.0L | 1m |
| Sophora microphylla | (kowhai) | 10 | 1.0L | 1m |
| Outer edge | | | | |
| Phormium tenax | (harakeke) | 90 | 0.5L | 1m |
| Myrsine australis | (red mapou) | 10 | 1.0L | 1m |

SOUTH BANK MP2 - Massed planting with tree enrichment

| Massed planting | | | | |
|--------------------------|----------------------|----|------|----|
| Aristolelia serrata | (makomako) | - | - | - |
| Coprosma repens | (taupata) | - | - | - |
| Coprosma robusta | (karamu) | 10 | 1.0L | 1m |
| Cordyline australis | (ti kouka) | 15 | 1.0L | 1m |
| Hebe stricta | (koromiko) | - | - | 1m |
| Kunzea ericoides | (kanuka) | 45 | 1.0L | 1m |
| Leptospermum scoparium | (manuka) | - | - | - |
| Melicytus ramiflorus | (mahoe) | 5 | 1.0L | 1m |
| Myoporum laetum | (ngaio) | - | - | - |
| Myrsine australis | (red mapou) | 5 | 1.0L | 1m |
| Olearia paniculata | (akariho) | 5 | 1.0L | 1m |
| Olearia solandri | (coastal tree daisy) | 5 | 1.0L | 1m |
| Phormium tenax | (harakeke, Flax) | 5 | 1.0L | 1m |
| Pittosporum eugeniioides | (tarata) | 5 | 1.0L | 1m |
| Pittosporum tenuifolium | (kohuhu) | - | - | - |
| Sophora microphylla | (kowhai) | - | - | - |

| Tree enrichment | | | | |
|--------------------------|-------------|--|------|--|
| Alectryon excelsus | (titoki) | | Pb18 | |
| Dacrycarpus dacrydioides | (kahikatea) | | Pb18 | |
| Dysoxylum spectabile | (kohekohe) | | Pb18 | |
| Knightia excelsa | (rewarewa) | | Pb18 | |
| Podocarpus totara | (totara) | | PB18 | |

| Edge transition zone, nom 2m wide - native grasses, low groundcovers and small shrubs | | | | |
|--|-----------------------|--|------|----|
| Carex testacea | (speckled sedge) | | 0.5L | 1m |
| Carex dipsacea | (treasel sedge) | | 0.5L | 1m |
| Carex flagellifera | (Glen Murray tussock) | | 0.5L | 1m |
| Muehlenbeckia complexa | Pohuehue, wire vine | | 1.0L | 1m |

| Riverbank protection | | | | |
|----------------------------------|--------------------|--|-------|----|
| Salix matsudana x alba 'Moutere' | (matsudana willow) | | poles | 1m |

A1 REPRODUCTION SCALE
0mm
20
40
60
80
100
A3 REPRODUCTION SCALE
0mm
10
20
30
40
50

DETAIL DESIGN (DET)

| No. | Revision | By | Chk | Chk.V | Appd | Date |
|-----|--|----|-----|-------|------|----------|
| C | FOR CERTIFICATION (WITH REQUESTED ALTERATIONS) | | | | | 13.12.13 |
| B | FOR CERTIFICATION | | | | | 28.11.13 |
| A | PRELIMINARY ISSUE | | | | | 12.09.13 |

| | | |
|---------------------|----------------|----------------------------|
| Original Scale (A1) | Design | Approved For Construction* |
| NTS | Drawn | Date |
| Reduced Scale (A3) | Drawn Verifier | |
| NTS | Drawn Check | |

* Refer to Revision 1 for Original Signature



| | |
|---------|--|
| Project | SH1 MACKAYS TO PEKA PEKA EXPRESSWAY RP 1012/0.00 TO 1023/5.00 |
|---------|--|

| | |
|-------|--|
| Title | SSMP 7 - SHEET 23 PLANTING SCHEDULE |
|-------|--|

| | | | |
|-------------|---|------|---|
| Drawing No. | - | Rev. | C |
|-------------|---|------|---|