



**VEGETATION TO BE RETAINED**

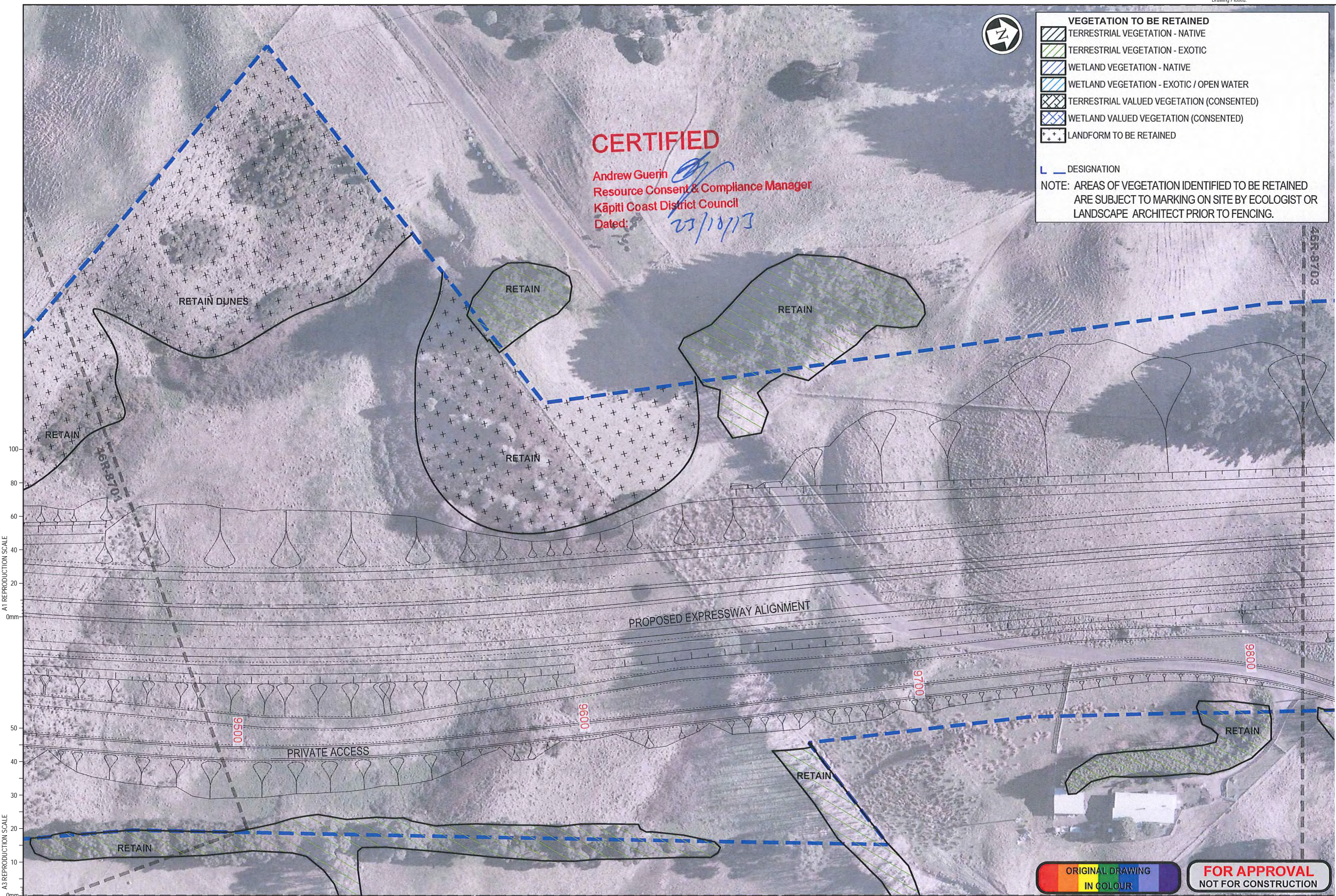
- TERRESTRIAL VEGETATION - NATIVE
- TERRESTRIAL VEGETATION - EXOTIC
- WETLAND VEGETATION - NATIVE
- WETLAND VEGETATION - EXOTIC / OPEN WATER
- TERRESTRIAL VALUED VEGETATION (CONSENTED)
- WETLAND VALUED VEGETATION (CONSENTED)
- LANDFORM TO BE RETAINED

**DESIGNATION**

NOTE: AREAS OF VEGETATION IDENTIFIED TO BE RETAINED ARE SUBJECT TO MARKING ON SITE BY ECOLOGIST OR LANDSCAPE ARCHITECT PRIOR TO FENCING.

**CERTIFIED**

Andrew Guerin  
 Resource Consent & Compliance Manager  
 Kāpiti Coast District Council  
 Dated: 23/10/13



A1 REPRODUCTION SCALE  
0mm 20 40 60 80 100

A3 REPRODUCTION SCALE  
0mm 10 20 30 40 50

DETAIL DESIGN (DET)

**ORIGINAL DRAWING IN COLOUR**

**FOR APPROVAL NOT FOR CONSTRUCTION**

No.	Revision	By	Chk	Chk.V	Appd	Date
B	FOR CERTIFICATION					20.12.13
A	PRELIMINARY ISSUE					19.09.13

**NZ TRANSPORT AGENCY**  
WAKA KOTAHĪ

**MacKays to Peka Peka**  
Wellington Northern Corridor

Project: SH1 MACKAYS TO PEKA PEKA EXPRESSWAY  
 RP 1012/0.00 TO 1023/5.00

Title: SSMP 5 & 6 - SHEET 26  
 VEGETATION TO BE RETAINED

Drawing No: M2PP-46R-D-DWG-8702  
 Rev: B

**VEGETATION TO BE RETAINED**

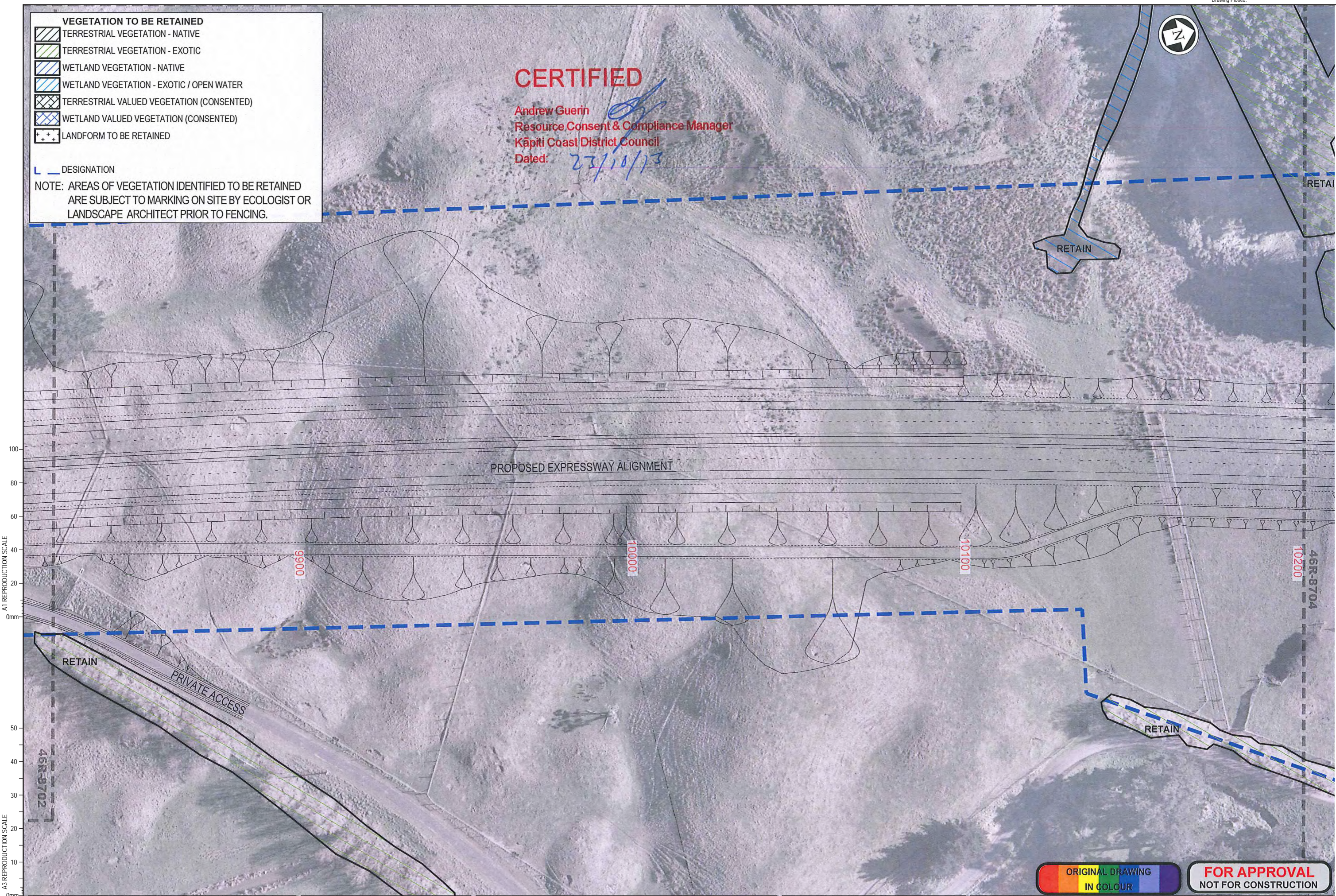
- TERRESTRIAL VEGETATION - NATIVE
- TERRESTRIAL VEGETATION - EXOTIC
- WETLAND VEGETATION - NATIVE
- WETLAND VEGETATION - EXOTIC / OPEN WATER
- TERRESTRIAL VALUED VEGETATION (CONSENTED)
- WETLAND VALUED VEGETATION (CONSENTED)
- LANDFORM TO BE RETAINED

DESIGNATION

NOTE: AREAS OF VEGETATION IDENTIFIED TO BE RETAINED ARE SUBJECT TO MARKING ON SITE BY ECOLOGIST OR LANDSCAPE ARCHITECT PRIOR TO FENCING.

**CERTIFIED**

Andrew Guerin  
 Resource Consent & Compliance Manager  
 Kāpiti Coast District Council  
 Dated: 23/10/13



DETAIL DESIGN (DET)

A1 REPRODUCTION SCALE

A3 REPRODUCTION SCALE

ORIGINAL DRAWING  
 IN COLOUR

**FOR APPROVAL**  
 NOT FOR CONSTRUCTION

No.	Revision	By	Chk	Chk.V	Appd	Date
B	FOR CERTIFICATION					20.12.13
A	PRELIMINARY ISSUE					19.09.13

Original Scale (A1)	Design	Approved For Construction*
1:500	Drawn	
Reduced Scale (A3)	Design Verifier	
1:1000	Design Check	

\* Refer to Revision 1 for Original Signature

Project: SH1 MACKAYS TO PEKA PEKA EXPRESSWAY  
 RP 1012/0.00 TO 1023/5.00

Title: SSMP 5 & 6 - SHEET 27  
 VEGETATION TO BE RETAINED

Drawing No: M2PP-46R-D-DWG-8731  
 Rev: B



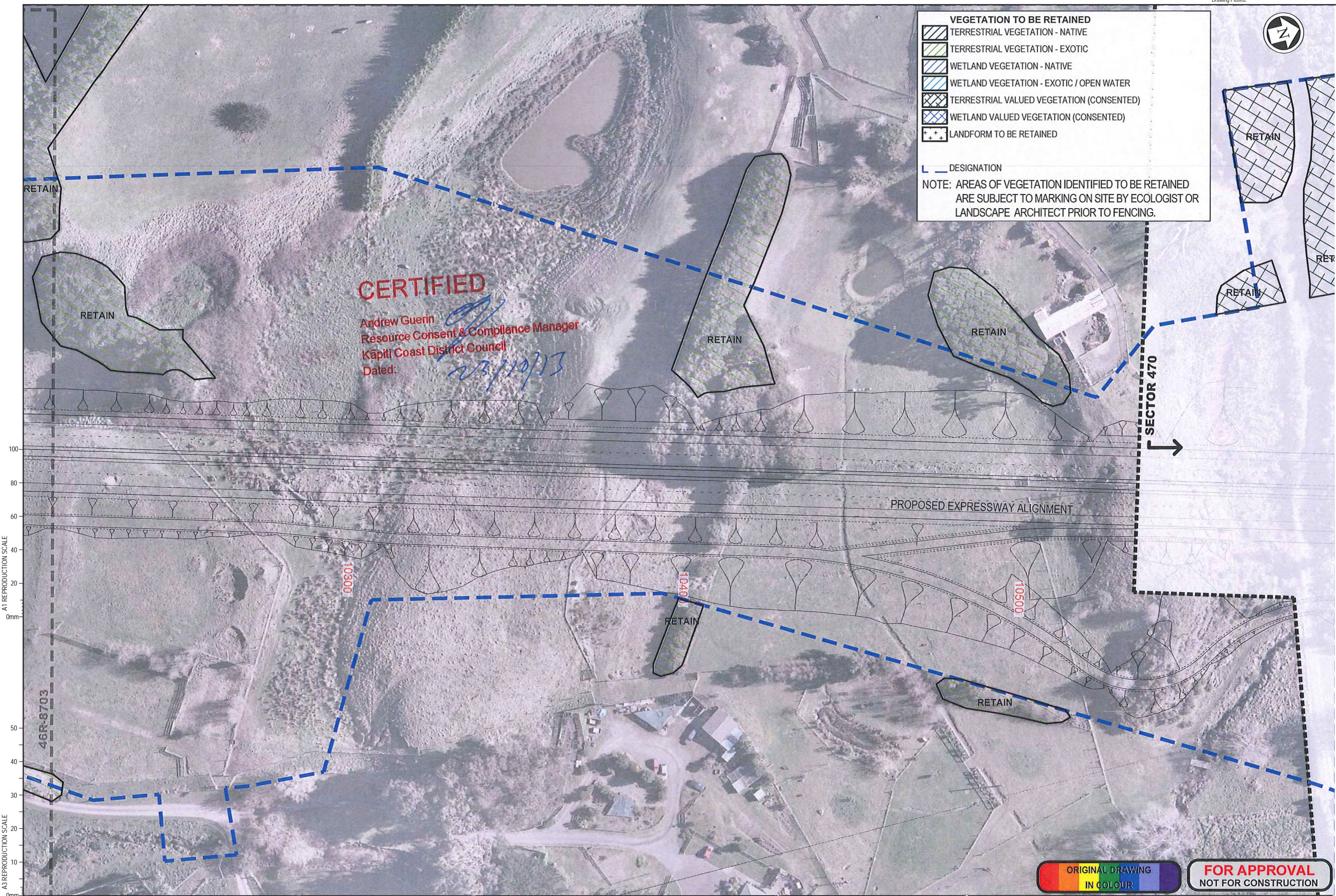
**VEGETATION TO BE RETAINED**

- TERRESTRIAL VEGETATION - NATIVE
- TERRESTRIAL VEGETATION - EXOTIC
- WETLAND VEGETATION - NATIVE
- WETLAND VEGETATION - EXOTIC / OPEN WATER
- TERRESTRIAL VALUED VEGETATION (CONSENTED)
- WETLAND VALUED VEGETATION (CONSENTED)
- LANDFORM TO BE RETAINED

**DESIGNATION**

**NOTE: AREAS OF VEGETATION IDENTIFIED TO BE RETAINED ARE SUBJECT TO MARKING ON SITE BY ECOLOGIST OR LANDSCAPE ARCHITECT PRIOR TO FENCING.**

**CERTIFIED**  
 Andrew Guerin  
 Resource Consent & Compliance Manager  
 Kāpiti Coast District Council  
 Dated: 23/10/13



A1 REPRODUCTION SCALE  
 0mm  
 10  
 20  
 30  
 40  
 50  
 60  
 80  
 100

A3 REPRODUCTION SCALE  
 0mm  
 10  
 20  
 30  
 40  
 50  
 60  
 80  
 100

**ORIGINAL DRAWING**  
 IN COLOUR

**FOR APPROVAL**  
 NOT FOR CONSTRUCTION

No.	Revision	By	Chk	Chk.V	Appd	Date
B	FOR CERTIFICATION					20.12.13
A	PRELIMINARY ISSUE					19.09.13

Original Scale (A1)	Design	Approved For Construction*
1:500	Drawn	
Reduced Scale (A3)	Design Verifier	
1:1000	Design Check	

\* Refer to Revision 1 for Original Signature

**NZ TRANSPORT AGENCY**  
 WAKA KOTAHĀ

**MacKays to Peka Peka**  
 Wellington Northern Corridor

Project: SH1 MACKAYS TO PEKA PEKA EXPRESSWAY  
 RP 1012/0.00 TO 1023/5.00

Title: SSMP 5 & 6 - SHEET 28  
 VEGETATION TO BE RETAINED

Drawing No: M2PP-46R-D-DWG-8704  
 Rev: B

DETAIL DESIGN (DET)