

A1 REPRODUCTION SCALE
0mm

A3 REPRODUCTION SCALE
0mm

VEGETATION TO BE RETAINED

- TERRESTRIAL VEGETATION - NATIVE
- TERRESTRIAL VEGETATION - EXOTIC
- WETLAND VEGETATION - NATIVE
- WETLAND VEGETATION - EXOTIC / OPEN WATER
- TERRESTRIAL VALUED VEGETATION (CONSENTED)
- WETLAND VALUED VEGETATION (CONSENTED)
- LANDFORM TO BE RETAINED

DESIGNATION
 ADJACENT SHEET EXTENTS.

NOTE: AREAS OF VEGETATION IDENTIFIED TO BE RETAINED ARE SUBJECT TO MARKING ON SITE BY ECOLOGIST OR LANDSCAPE ARCHITECT PRIOR TO FENCING.

430

ORIGINAL DRAWING
IN COLOUR

FOR APPROVAL
NOT FOR CONSTRUCTION

| | | | | | |
|-----|-------------------|----|-----|------|----------|
| B | FOR CERTIFICATION | | | | 20.12.13 |
| A | PRELIMINARY ISSUE | | | | 19.09.13 |
| No. | Revision | By | Chk | Appd | Date |

| | | |
|---------------------|--|----------------------------|
| Original Scale (A1) | Design | Approved For Construction* |
| 1:500 | Drawn | Date |
| Reduced Scale (A3) | Drawn Verifier | |
| 1:1000 | Design Check | |
| | * Refer to Revision 1 for Original Signature | |



Project SH1 MACKAYS TO PEKA PEKA EXPRESSWAY
RP 1012/0.00 TO 1023/5.00

Title: SSMP 5 & 6 - SHEET 23
VEGETATION TO BE RETAINED

Drawing No: M2PP-43R-D-DWG-8705

Rev: B

DETAIL DESIGN (DET)



43R-8705

43R-8704

PINES REMOVED IN APPROXIMATELY 2011, NOW REGENERATING SCRUB

RETAIN DUNE

RETAIN

CERTIFIED

Andrew Guerin
Resource Consent & Compliance Manager
Kāpiti Coast District Council
Dated: 12/12/13

SECTOR 440
SECTOR 430

OTAIHANGA ROAD

RETAIN

A1 REPRODUCTION SCALE
0mm
20
40
60
80
100

A3 REPRODUCTION SCALE
0mm
10
20
30
40
50

VEGETATION TO BE RETAINED

- TERRESTRIAL VEGETATION - NATIVE
- TERRESTRIAL VEGETATION - EXOTIC
- WETLAND VEGETATION - NATIVE
- WETLAND VEGETATION - EXOTIC / OPEN WATER
- TERRESTRIAL VALUED VEGETATION (CONSENTED)
- WETLAND VALUED VEGETATION (CONSENTED)
- LANDFORM TO BE RETAINED

DESIGNATION ADJACENT SHEET EXTENTS.

NOTE: AREAS OF VEGETATION IDENTIFIED TO BE RETAINED ARE SUBJECT TO MARKING ON SITE BY ECOLOGIST OR LANDSCAPE ARCHITECT PRIOR TO FENCING.

430 ORIGINAL DRAWING IN COLOUR **FOR APPROVAL NOT FOR CONSTRUCTION**

| | | | | | | |
|-----|-------------------|----|-----|-------|------|----------|
| No. | Revision | By | Chk | Chk.V | Appd | Date |
| B | FOR CERTIFICATION | | | | | 20.12.13 |
| A | PRELIMINARY ISSUE | | | | | 19.09.13 |

| | | |
|---------------------|-----------------|----------------------------|
| Original Scale (A1) | Design | Approved For Construction* |
| 1:500 | Drawn | Date |
| Reduced Scale (A3) | Design Verifier | |
| 1:1000 | Design Check | |

* Refer to Revision 1 for Original Signature

NZ TRANSPORT AGENCY WAKA KOTAHU
MacKays to Peka Peka
Wellington Northern Corridor

Project: SH1 MACKAYS TO PEKA PEKA EXPRESSWAY
RP 1012/0.00 TO 1023/5.00

Title: SSMP 5 & 6 - SHEET 24
VEGETATION TO BE RETAINED

Drawing No: M2PP-43R-D-DWG-8706

Rev: B

DETAIL DESIGN (DET)

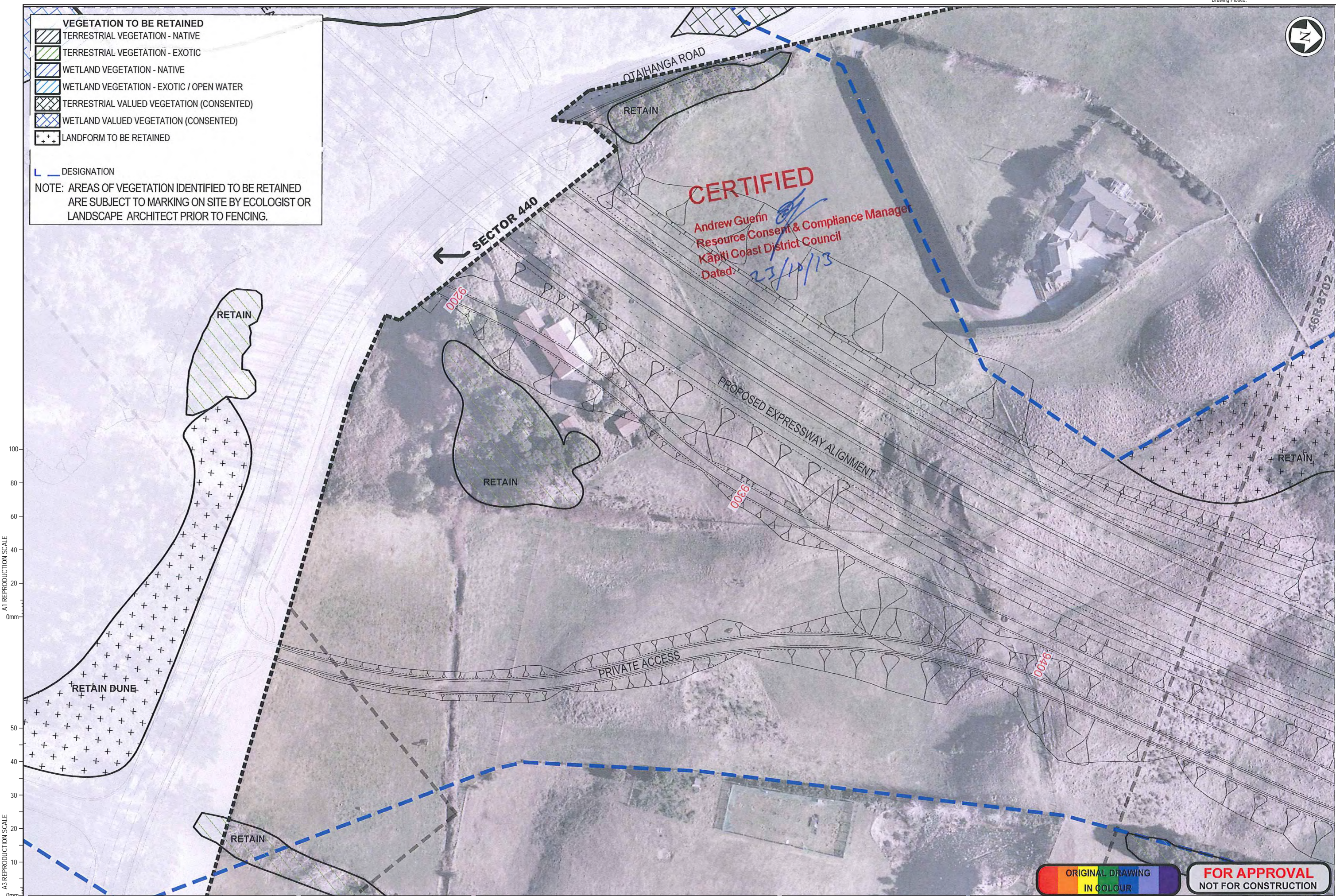


VEGETATION TO BE RETAINED

- TERRESTRIAL VEGETATION - NATIVE
- TERRESTRIAL VEGETATION - EXOTIC
- WETLAND VEGETATION - NATIVE
- WETLAND VEGETATION - EXOTIC / OPEN WATER
- TERRESTRIAL VALUED VEGETATION (CONSENTED)
- WETLAND VALUED VEGETATION (CONSENTED)
- LANDFORM TO BE RETAINED

DESIGNATION

NOTE: AREAS OF VEGETATION IDENTIFIED TO BE RETAINED ARE SUBJECT TO MARKING ON SITE BY ECOLOGIST OR LANDSCAPE ARCHITECT PRIOR TO FENCING.



CERTIFIED
 Andrew Guerin
 Resource Consent & Compliance Manager
 Kapiti Coast District Council
 Dated: 23/10/13

A1 REPRODUCTION SCALE
0mm 20 40 60 80 100

A3 REPRODUCTION SCALE
0mm 10 20 30 40 50

DETAIL DESIGN (DET)

| | | | | | | |
|-----|-------------------|----|-----|-------|------|----------|
| No. | Revision | By | Chk | Chk.V | Appd | Date |
| B | FOR CERTIFICATION | | | | | 20.12.13 |
| A | PRELIMINARY ISSUE | | | | | 19.09.13 |

| | | |
|---------------------|-----------------|----------------------------|
| Original Scale (A1) | Design | Approved For Construction* |
| 1:500 | Drawn | Date |
| Reduced Scale (A3) | Design Verifier | |
| 1:1000 | Design Check | |

* Refer to Revision 1 for Original Signature

NZ TRANSPORT AGENCY
 WAKA KOTAHU

MacKays to Peka Peka
 Wellington Northern Corridor

Project: SH1 MACKAYS TO PEKA PEKA EXPRESSWAY
 RP 1012/0.00 TO 1023/5.00

Title: SSMP 5 & 6 - SHEET 25
 VEGETATION TO BE RETAINED

Drawing No: M2PP-46R-D-DWG-8701
 Rev: B

ORIGINAL DRAWING
 IN COLOUR

FOR APPROVAL
 NOT FOR CONSTRUCTION