



VEGETATION TO BE RETAINED

- TERRESTRIAL VEGETATION - NATIVE
- TERRESTRIAL VEGETATION - EXOTIC
- WETLAND VEGETATION - NATIVE
- WETLAND VEGETATION - EXOTIC / OPEN WATER
- TERRESTRIAL VALUED VEGETATION (CONSENTED)
- WETLAND VALUED VEGETATION (CONSENTED)
- LANDFORM TO BE RETAINED

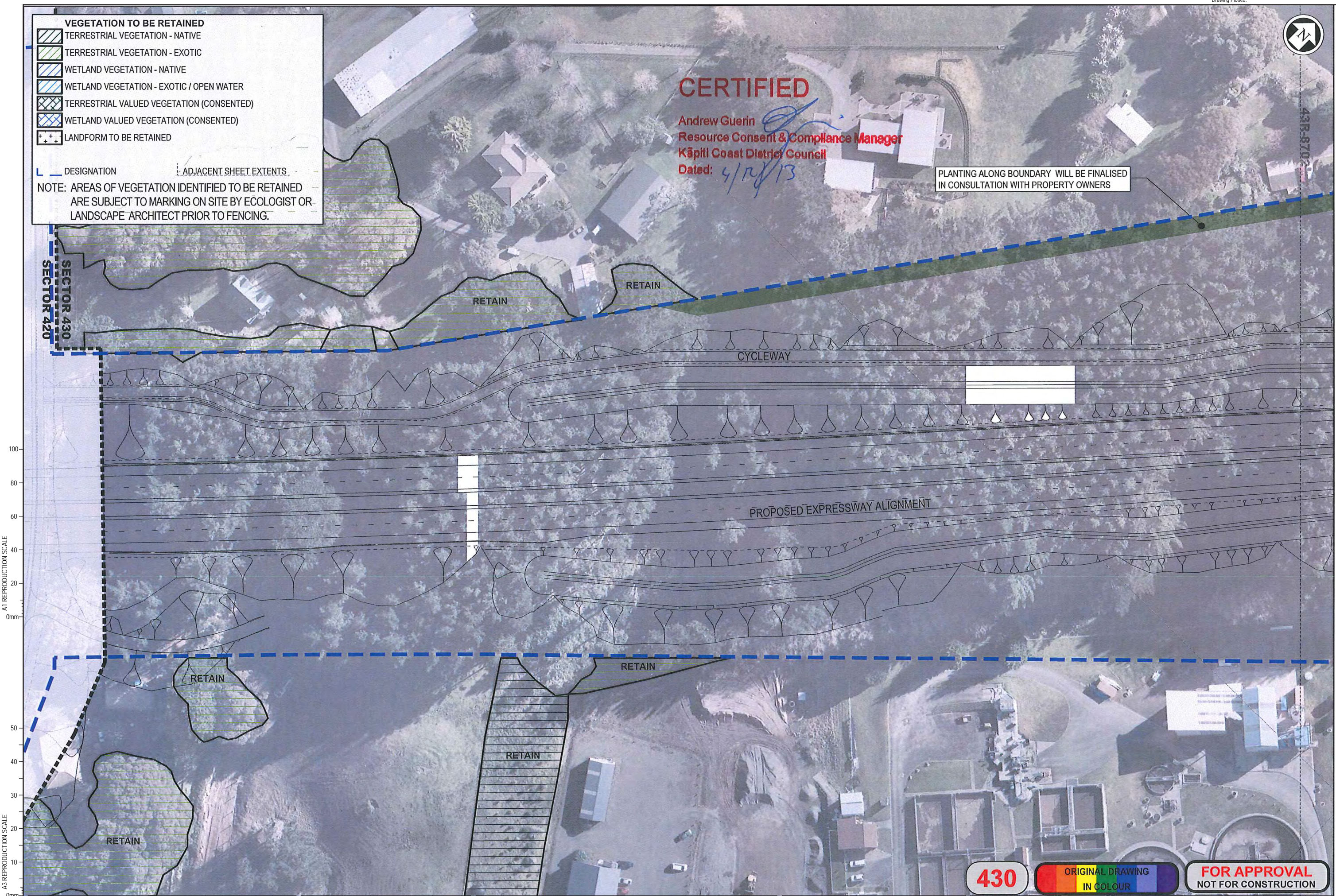
DESIGNATION ADJACENT SHEET EXTENTS

NOTE: AREAS OF VEGETATION IDENTIFIED TO BE RETAINED ARE SUBJECT TO MARKING ON SITE BY ECOLOGIST OR LANDSCAPE ARCHITECT PRIOR TO FENCING.

CERTIFIED

Andrew Guerin
 Resource Consent & Compliance Manager
 Kāpiti Coast District Council
 Dated: 4/12/13

PLANTING ALONG BOUNDARY WILL BE FINALISED IN CONSULTATION WITH PROPERTY OWNERS



DETAIL DESIGN (DET)

430

ORIGINAL DRAWING
IN COLOUR

FOR APPROVAL
NOT FOR CONSTRUCTION

No.	Revision	By	Chk	Chk.V	Appd	Date
B	FOR CERTIFICATION					20.12.13
A	PRELIMINARY ISSUE					19.09.13

Original Scale (A1)	Design	Approved For Construction*
1:500	Drawn	
Reduced Scale (A3)	Design Verifier	
1:1000	Design Check	

* Refer to Revision 1 for Original Signature

Project: SH1 MACKAYS TO PEKA PEKA EXPRESSWAY
 RP 1012/0.00 TO 1023/5.00

Title: SSMP 5 & 6 - SHEET 19
 VEGETATION TO BE RETAINED

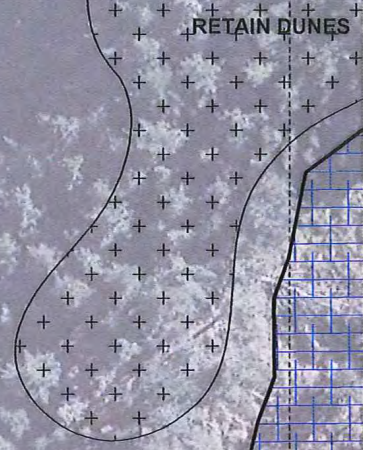
Drawing No: M2PP-43R-D-DWG-8701
 Rev: B



CERTIFIED

Andrew Guerin
Resource Consent & Compliance Manager
Kāpiti Coast District Council
Dated: 15/12/13

PLANTING ALONG BOUNDARY WILL BE FINALISED
IN CONSULTATION WITH PROPERTY OWNERS



PLANTS FROM AREA TO BE
TRANSPLANTED TO WETLAND
MITIGATION AREAS

CYCLEWAY

PROPOSED EXPRESSWAY ALIGNMENT

RETAIN

OTAIHANGA SOUTHERN WETLANDS
CONDITION G.41 (j) 3.

VEGETATION TO BE RETAINED

- TERRESTRIAL VEGETATION - NATIVE
- TERRESTRIAL VEGETATION - EXOTIC
- WETLAND VEGETATION - NATIVE
- WETLAND VEGETATION - EXOTIC / OPEN WATER
- TERRESTRIAL VALUED VEGETATION (CONSENTED)
- WETLAND VALUED VEGETATION (CONSENTED)
- LANDFORM TO BE RETAINED

DESIGNATION ADJACENT SHEET EXTENTS.

NOTE: AREAS OF VEGETATION IDENTIFIED TO BE RETAINED
ARE SUBJECT TO MARKING ON SITE BY ECOLOGIST OR
LANDSCAPE ARCHITECT PRIOR TO FENCING.

A1 REPRODUCTION SCALE
0mm
20
40
60
80
100

A3 REPRODUCTION SCALE
0mm
10
20
30
40
50

DETAIL DESIGN (DET)

No.	Revision	By	Chk	Chk.V	Appd	Date
B	FOR CERTIFICATION					20.12.13
A	PRELIMINARY ISSUE					19.09.13

Original Scale (A1)	Design	Approved For Construction*
1:500	Drawn	Date
Reduced Scale (A3)	Drawn Verifier	
1:1000	Design Check	

* Refer to Revision 1 for Original Signature

Project: SH1 MACKAYS TO PEKA PEKA EXPRESSWAY
RP 1012/0.00 TO 1023/5.00

430

ORIGINAL DRAWING
IN COLOUR

FOR APPROVAL
NOT FOR CONSTRUCTION

Title: SSMP 5 & 6 - SHEET 20
VEGETATION TO BE RETAINED

Drawing No: M2PP-43R-D-DWG-8702

Rev: B

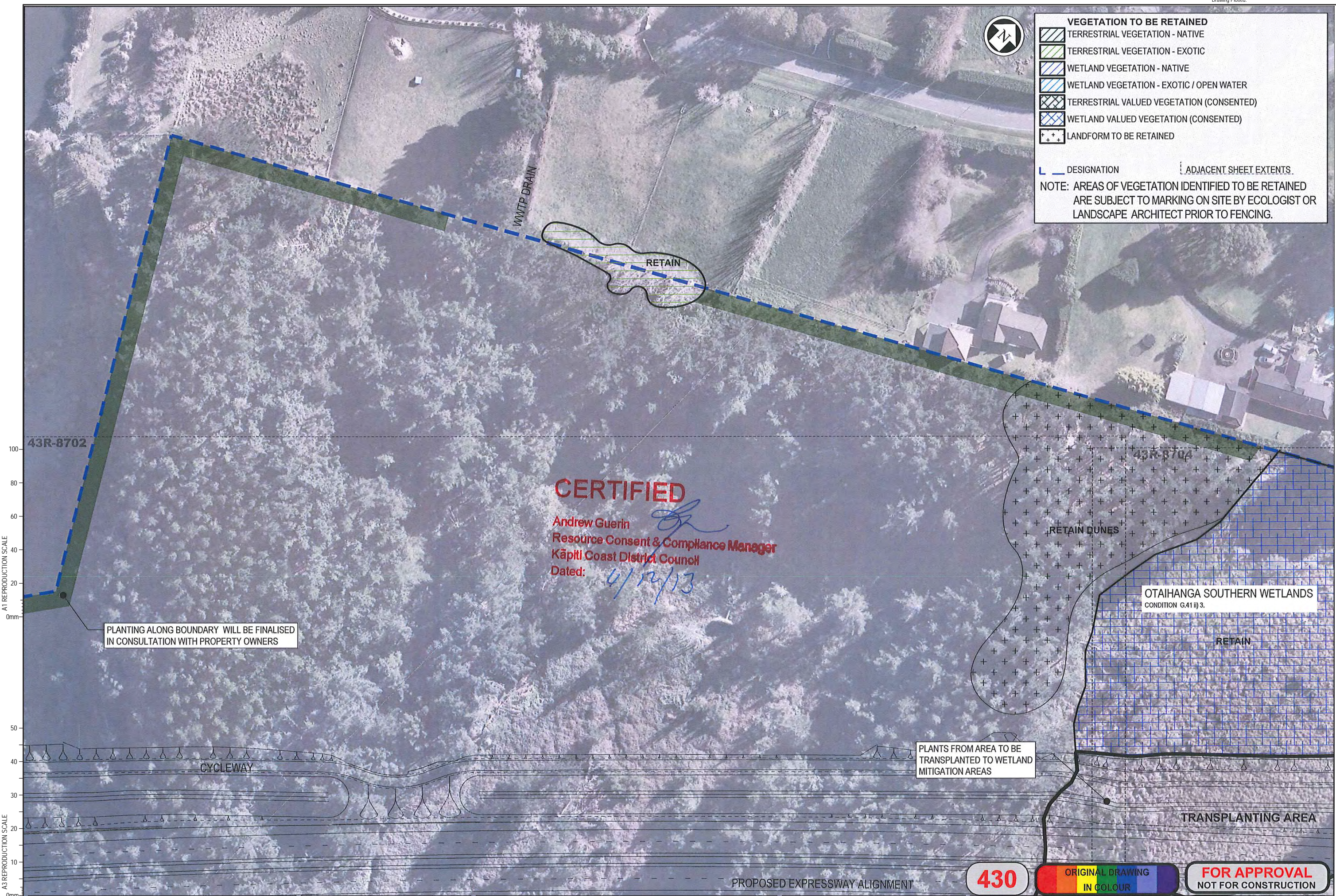


VEGETATION TO BE RETAINED

- TERRESTRIAL VEGETATION - NATIVE
- TERRESTRIAL VEGETATION - EXOTIC
- WETLAND VEGETATION - NATIVE
- WETLAND VEGETATION - EXOTIC / OPEN WATER
- TERRESTRIAL VALUED VEGETATION (CONSENTED)
- WETLAND VALUED VEGETATION (CONSENTED)
- LANDFORM TO BE RETAINED

DESIGNATION ADJACENT SHEET EXTENTS.

NOTE: AREAS OF VEGETATION IDENTIFIED TO BE RETAINED ARE SUBJECT TO MARKING ON SITE BY ECOLOGIST OR LANDSCAPE ARCHITECT PRIOR TO FENCING.



CERTIFIED
 Andrew Guerin
 Resource Consent & Compliance Manager
 Kāpiti Coast District Council
 Dated: 4/12/13

PLANTING ALONG BOUNDARY WILL BE FINALISED IN CONSULTATION WITH PROPERTY OWNERS

PLANTS FROM AREA TO BE TRANSPLANTED TO WETLAND MITIGATION AREAS

OTAIHANGA SOUTHERN WETLANDS
 CONDITION G.41(i) 3.

430

ORIGINAL DRAWING
 IN COLOUR

FOR APPROVAL
 NOT FOR CONSTRUCTION

A1 REPRODUCTION SCALE
 0mm

A3 REPRODUCTION SCALE
 0mm

No.	Revision	By	Chk	Chk.V	Appd	Date
B	FOR CERTIFICATION					20.12.13
A	PRELIMINARY ISSUE					19.09.13

Original Scale (A1)	Design	Approved For Construction*
1:500	Drawn	
Reduced Scale (A3)	Design Verifier	Date
1:1000	Design Check	

NZ TRANSPORT AGENCY
 WAKA KOTAHĪ

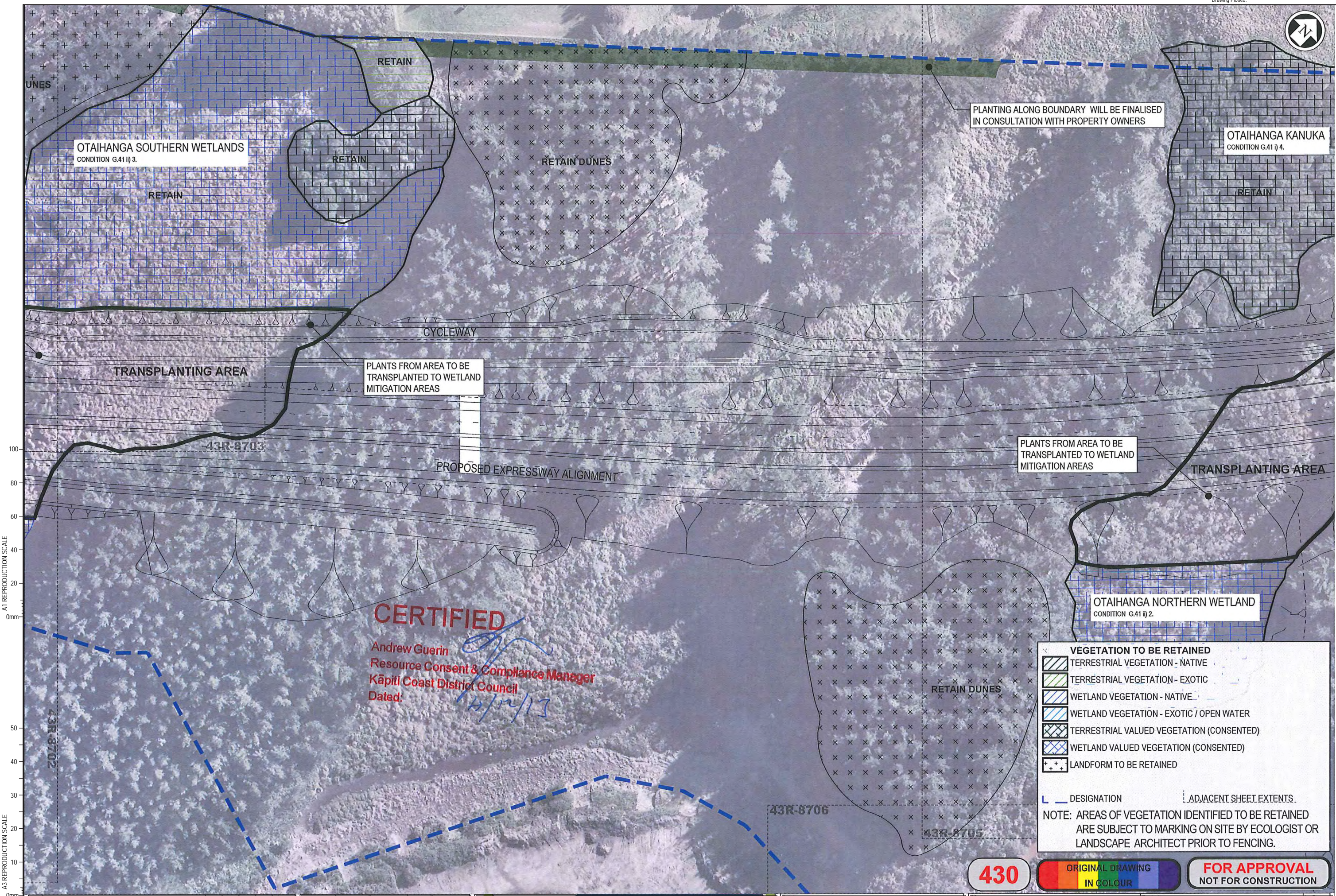
MacKays to Peka Peka
 Wellington Northern Corridor

Project: SH1 MACKAYS TO PEKA PEKA EXPRESSWAY
 RP 1012/0.00 TO 1023/5.00

Title: SSMP 5 & 6 - SHEET 21
 VEGETATION TO BE RETAINED

Drawing No: M2PP-43R-D-DWG-8703
 Rev: B

DETAIL DESIGN (DET)



CERTIFIED
Andrew Guerin
Resource Consent & Compliance Manager
Kāpiti Coast District Council
Dated: 14/12/13

VEGETATION TO BE RETAINED

- TERRESTRIAL VEGETATION - NATIVE
- TERRESTRIAL VEGETATION - EXOTIC
- WETLAND VEGETATION - NATIVE
- WETLAND VEGETATION - EXOTIC / OPEN WATER
- TERRESTRIAL VALUED VEGETATION (CONSENTED)
- WETLAND VALUED VEGETATION (CONSENTED)
- LANDFORM TO BE RETAINED

DESIGNATION ADJACENT SHEET EXTENTS.

NOTE: AREAS OF VEGETATION IDENTIFIED TO BE RETAINED ARE SUBJECT TO MARKING ON SITE BY ECOLOGIST OR LANDSCAPE ARCHITECT PRIOR TO FENCING.

A1 REPRODUCTION SCALE
0mm
20
40
60
80
100

A3 REPRODUCTION SCALE
0mm
10
20
30
40
50

DETAIL DESIGN (DET)

No.	Revision	By	Chk	Chk.V	Appd	Date
B	FOR CERTIFICATION					20.12.13
A	PRELIMINARY ISSUE					19.09.13

Original Scale (A1)	Design	Approved For Construction*
1:500	Drawn	
Reduced Scale (A3)	Draw Verifier	
1:1000	Draw Check	
	* Refer to Revision 1 for Original Signature	

NZ TRANSPORT AGENCY
WAKA KOTAHU

MacKays to Peka Peka
Wellington Northern Corridor

Project: SH1 MACKAYS TO PEKA PEKA EXPRESSWAY
RP 1012/0.00 TO 1023/5.00

Title: SSMP 5 & 6 - SHEET 22
VEGETATION TO BE RETAINED

Drawing No.: M2PP-43R-D-DWG-8704
Rev: B