

Appendix 1: DRAWING SET

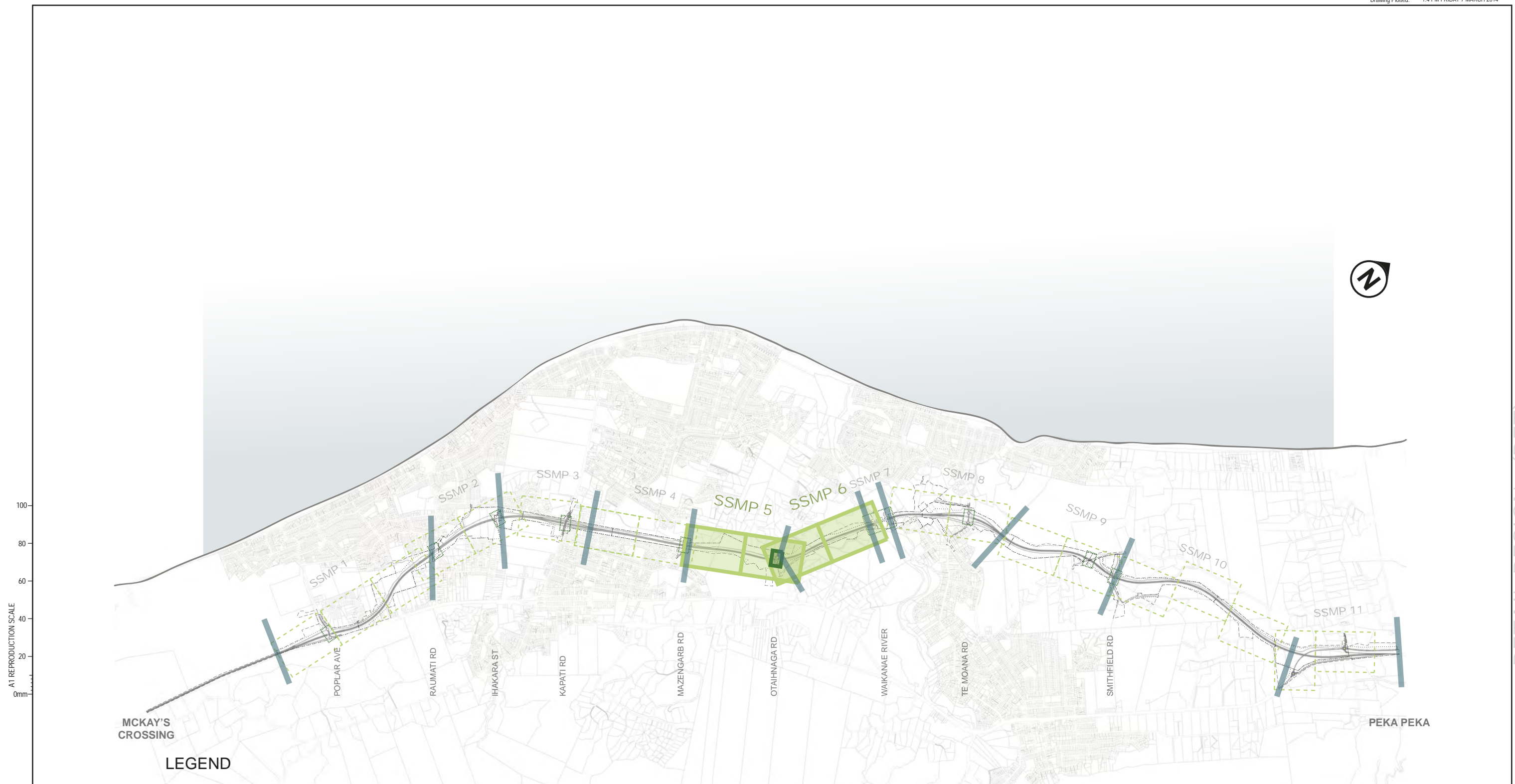
Site Specific Management Plan 005 + 006 - Otaihanga North and South [COMBINED]

MacKays to Peka Peka Expressway

M2PP-121-D-MPL-0006

29 JANUARY 2014





**LEGEND**

	ROAD		SSMP SHEET (ROAD)		SSMP SHEET (BRIDGE)		PARCEL BOUNDARIES
	SSMP BOUNDARY		CURRENT SSMP SHEET (ROAD)		CURRENT SSMP SHEET (BRIDGE)		CONSTRUCTION BOUNDARY

A1 REPRODUCTION SCALE  
0mm 20 40 60 80 100

A3 REPRODUCTION SCALE  
0mm 10 20 30 40 50

B	FOR CERTIFICATION				20.12.13
A	PRELIMINARY ISSUE				19.09.13
No.	Revision	By	Chk	Chk.V	Appd

Original Scale (A1)	Design	Drawn	Approved For Construction
1:25,000	-	-	Date
Reduced Scale (A3)	Design Verifier		
1:50,000	Design Check		
	* Refer to Revision 1 for Original Signature		

**MacKays to Peka Peka**  
Wellington Northern Corridor

Project: SH1 MACKAYS TO PEKA PEKA EXPRESSWAY  
RP 1012/0.00 TO 1023/5.00

Title: SSMP 5 & 6 - SHEET 1  
LOCATION PLAN

Drawing No: M2PP-121-D-GPH-8056

Rev. B

DETAIL DESIGN (DET)

Document No.





General	Urban Design	Landscape	Ecology	CWB
--- Designation Boundary	Concrete Bridge Barrier	Individual Retained Trees	Retained Valued Terrestrial Vegetation	Loose Chip CWB
- - - Wire Barrier	Concrete Noise Wall	Retained Vegetation	Retained Valued Wetland Vegetation	Chip Seal CWB
- - - W-Barrier	Culvert Headwall	Grass	Planted Indigenous Terrestrial Habitat	Concrete CWB
- - - Barrier Transition	Retaining Wall	Massed Planting	Planted Indigenous Wetland Habitat	Existing Access Track or CWB
- - - Concrete Traffic Barrier	Bridge Deck	with Tree Enrichment	Stream Mitigation / Riparian Habitat	
- - - Culvert	Bridge Abutment	Wetland / Riparian Planting	Existing Water Body	
- - - Swale	Bridge Piers	Native Tree Planting		
- - - Planted Swale		Exotic Tree Planting		

OTAIHANGA WETLANDS SSEMP FOCUS AREA	
Stream Mitigation	438 qm
Riparian Planting	1.55 ha
Wetland Habitat	1.8 ha



No.	Revision	By	Chk	Chk.V	Appd	Date
B	FOR CERTIFICATION					20.12.13
A	PRELIMINARY ISSUE					19.09.13



Project: SH1 MACKAYS TO PEKA PEKA EXPRESSWAY  
RP 1012/0.00 TO 1023/5.00

Title: SSMP 5 & 6 - SHEET 2 MASTERPLAN

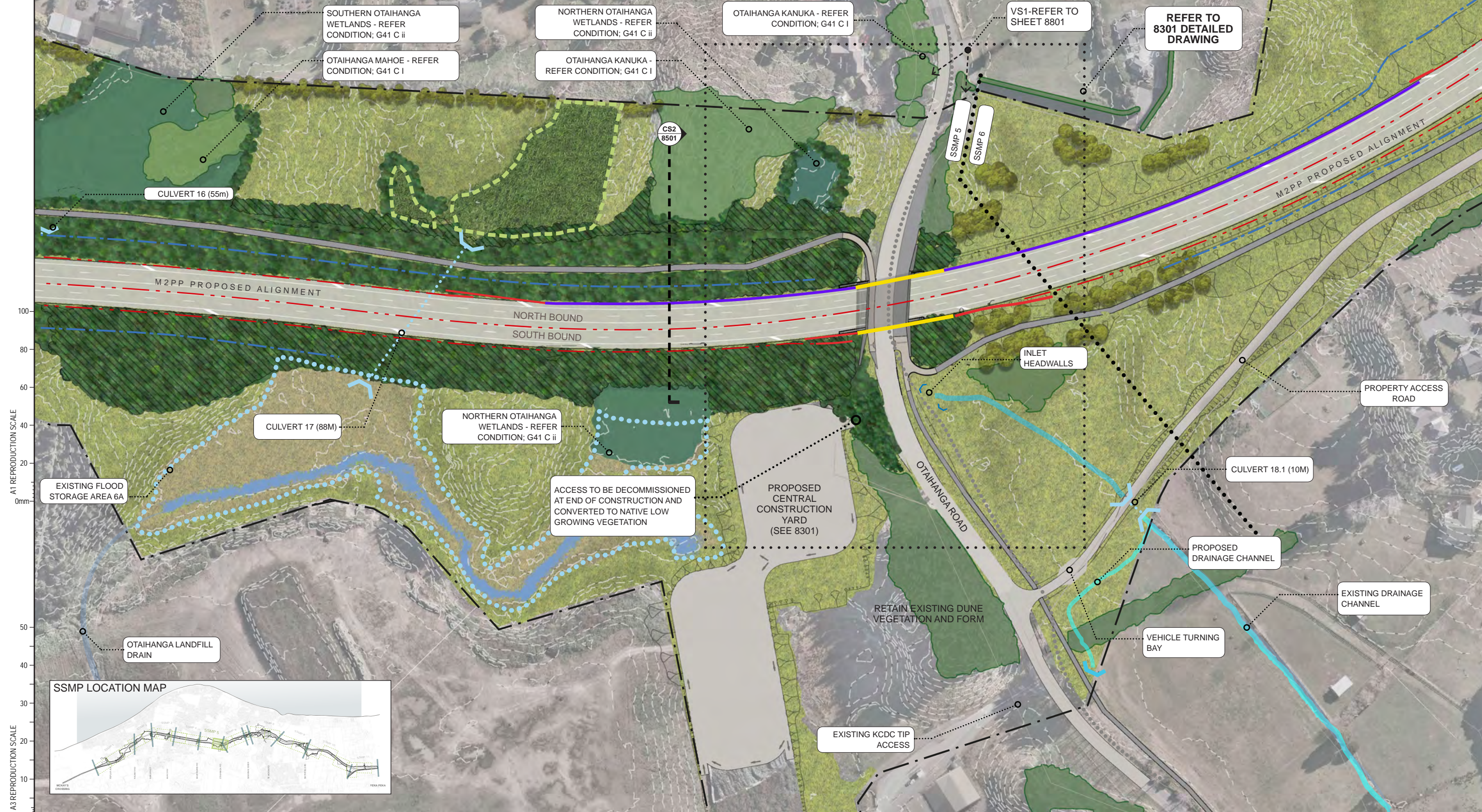
Drawing No: M2PP-121-D-GPH-8101  
Rev: B

DETAIL DESIGN (DET)



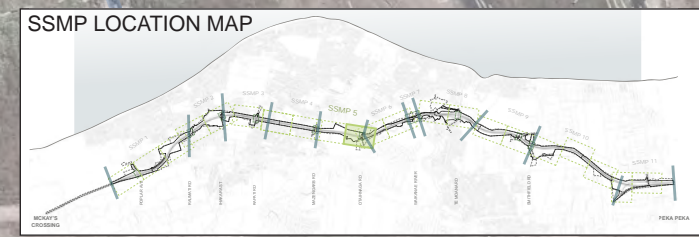


General	Urban Design	Landscape	Ecology	CWB
--- Designation Boundary	Concrete Bridge Barrier	Individual Retained Trees	Retained Valued Terrestrial Vegetation	Loose Chip CWB
- - - Wire Barrier	Concrete Noise Wall	Retained Vegetation	Retained Valued Wetland Vegetation	Chip Seal CWB
- - - W-Barrier	Culvert Headwall	Grass	Planted Indigenous Terrestrial Habitat	Concrete CWB
--- Barrier Transition	Retaining Wall	Massed Planting	Planted Indigenous Wetland Habitat	Existing Access Track or CWB
--- Concrete Traffic Barrier	Bridge Deck	with Tree Enrichment	Stream Mitigation / Riparian Habitat	
--- Culvert	Bridge Abutment	Wetland / Riparian Planting	Existing Water Body	
--- Swale	Bridge Piers	Native Tree Planting		
--- Planted Swale		Exotic Tree Planting		



A1 REPRODUCTION SCALE  
0mm

A3 REPRODUCTION SCALE  
0mm



No.	Revision	By	Chk	Chk.V	Appd	Date
B	FOR CERTIFICATION					20.12.13
A	PRELIMINARY ISSUE					19.09.13

WAKA KOTAHĀ | Wellington Northern Corridor

Project: SH1 MACKAYS TO PEKA PEKA EXPRESSWAY  
RP 1012/0.00 TO 1023/5.00

Title: SSMP 5 & 6 - SHEET 3  
MASTERPLAN

Document No.: M2PP-121-D-GPH-8102

DETAIL DESIGN (DET)



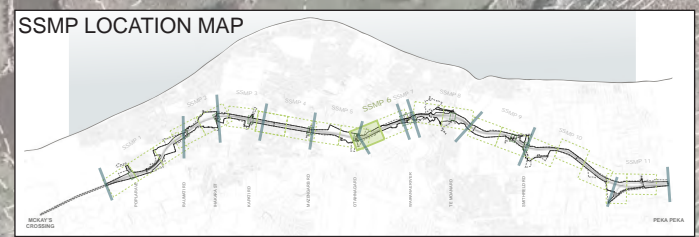


General	Urban Design	Landscape	Ecology	CWB
Designation Boundary	Concrete Bridge Barrier	Individual Retained Trees	Retained Valued Terrestrial Vegetation	Loose Chip CWB
Wire Barrier	Concrete Noise Wall	Retained Vegetation	Retained Valued Wetland Vegetation	Chip Seal CWB
W-Barrier	Culvert Headwall	Grass	Planted Indigenous Terrestrial Habitat	Concrete CWB
Barrier Transition	Retaining Wall	Massed Planting	Planted Indigenous Wetland Habitat	Existing Access Track or CWB
Concrete Traffic Barrier	Bridge Deck	Massed Planting with Tree Enrichment	Stream Mitigation / Riparian Habitat	
Culvert	Bridge Abutment	Wetland / Riparian Planting	Existing Water Body	
Swale	Bridge Piers	Native Tree Planting		
Planted Swale		Exotic Tree Planting		



A1 REPRODUCTION SCALE  
0mm  
20  
40  
60  
80  
100

A3 REPRODUCTION SCALE  
0mm  
10  
20  
30  
40  
50



No.	Revision	By	Chk	Chk.V	Appd	Date
B	FOR CERTIFICATION					20.12.13
A	PRELIMINARY ISSUE					19.09.13

Original Scale (A1)	Design Drawn	Approved For Construction?
Reduced Scale (A3)	Design Drawn	Date

\* Refer to Revision 1 for Original Signature



Project: SH1 MACKAYS TO PEKA PEKA EXPRESSWAY  
RP 1012/0.00 TO 1023/5.00

Title: SSMP 6 - SHEET 4 MASTERPLAN

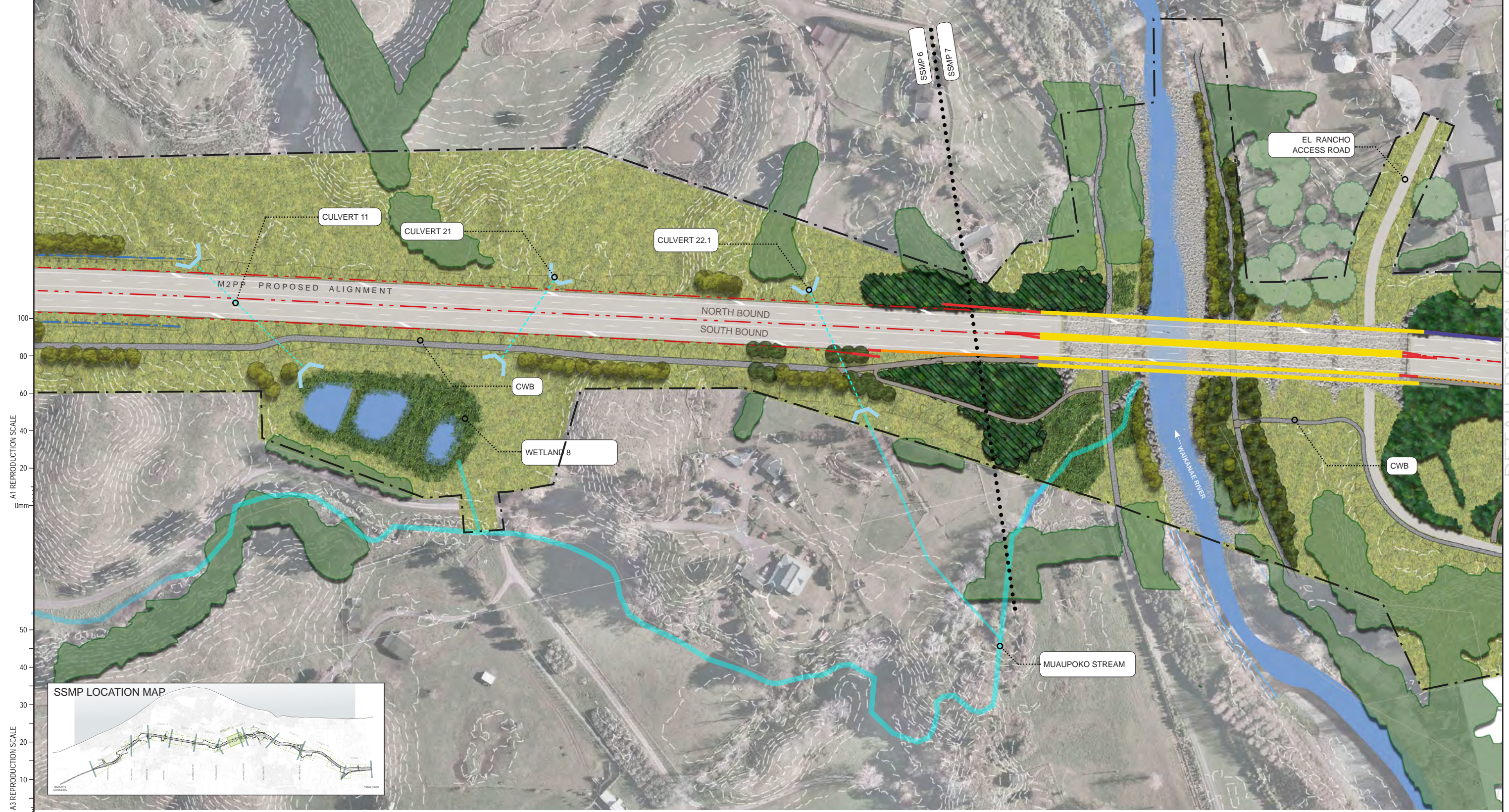
Drawing No: M2PP-121-D-GPH-8103  
Rev: B

DETAIL DESIGN (DET)

Document No.

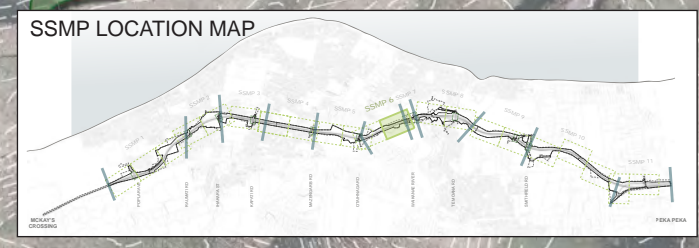


General	Urban Design	Landscape	Ecology	CWB
--- Designation Boundary	Concrete Bridge Barrier	Individual Retained Trees	Retained Valued Terrestrial Vegetation	Loose Chip CWB
- - - Wire Barrier	Concrete Noise Wall	Retained Vegetation	Retained Valued Wetland Vegetation	Chip Seal CWB
- - - W-Barrier	Culvert Headwall	Grass	Planted Indigenous Terrestrial Habitat	Concrete CWB
--- Barrier Transition	Retaining Wall	Massed Planting	Planted Indigenous Wetland Habitat	Existing Access Track or CWB
--- Concrete Traffic Barrier	Bridge Deck	with Tree Enrichment	Stream Mitigation / Riparian Habitat	
--- Culvert	Bridge Abutment	Wetland / Riparian Planting	Existing Water Body	
--- Swale	Bridge Piers	Native Tree Planting		
--- Planted Swale		Exotic Tree Planting		



A1 REPRODUCTION SCALE  
0mm  
20  
40  
60  
80  
100

A3 REPRODUCTION SCALE  
0mm  
10  
20  
30



No.	Revision	By	Chk	Chk.V	Appd	Date
B	FOR CERTIFICATION					20.12.13
A	PRELIMINARY ISSUE					19.09.13

Original Scale (A1)	Design	Approved For Construction?
1:1000	Drawn	
Reduced Scale (A3)	Drawn Verifier	Date
1:2000	Design Check	

\* Refer to Revision 1 for Original Signature

Project: SH1 MACKAYS TO PEKA PEKA EXPRESSWAY  
RP 1012/0.00 TO 1023/5.00

Title: SSMP 6 - SHEET 5 MASTERPLAN

Drawing No: M2PP-121-D-GPH-8104

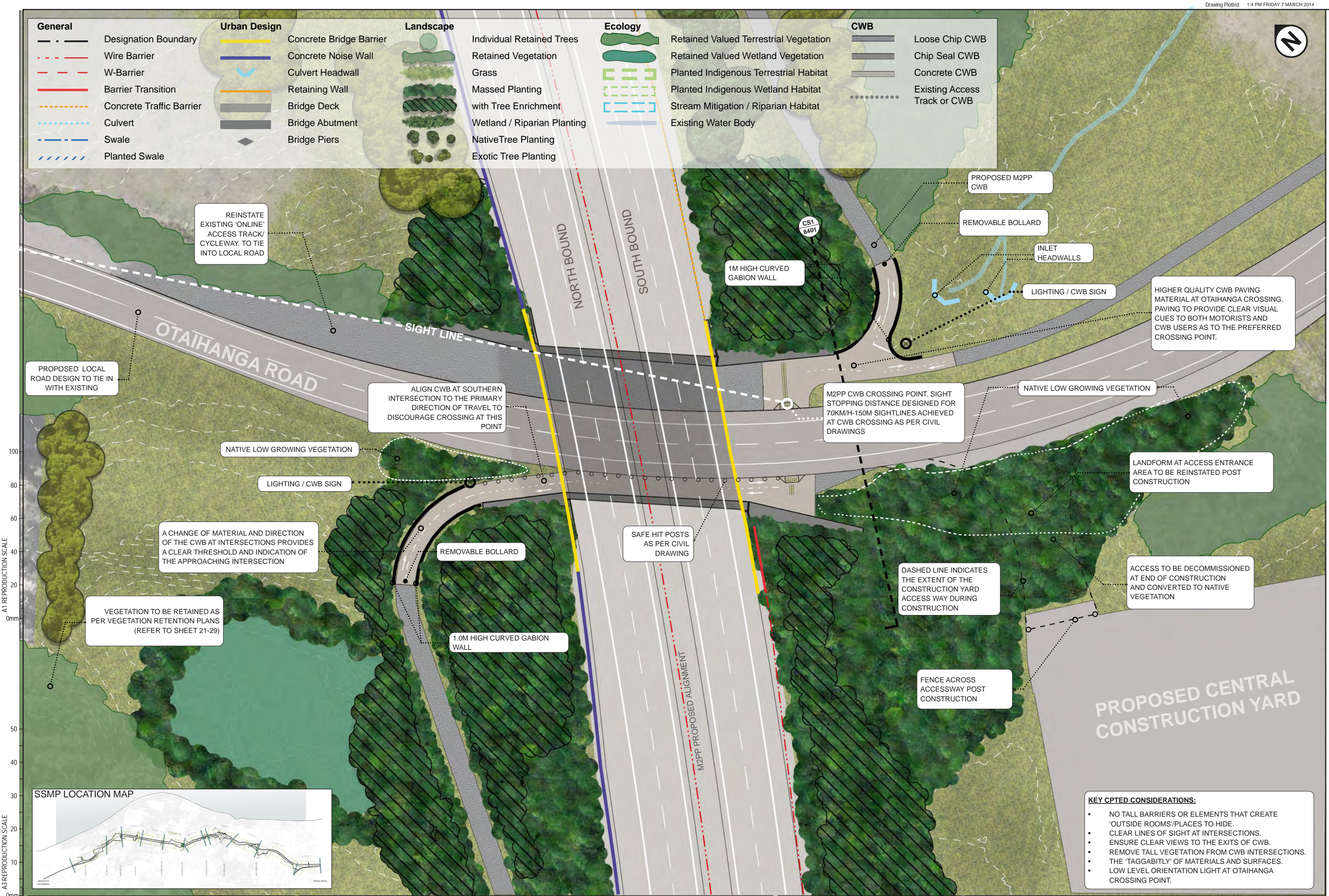
Rev: B

DETAIL DESIGN (DET)





General	Urban Design	Landscape	Ecology	CWB
--- Designation Boundary	Concrete Bridge Barrier	Individual Retained Trees	Retained Valued Terrestrial Vegetation	Loose Chip CWB
- - - Wire Barrier	Concrete Noise Wall	Retained Vegetation	Retained Valued Wetland Vegetation	Chip Seal CWB
- - - W-Barrier	Culvert Headwall	Grass	Planted Indigenous Terrestrial Habitat	Concrete CWB
--- Barrier Transition	Retaining Wall	Massed Planting	Planted Indigenous Wetland Habitat	Existing Access Track or CWB
--- Concrete Traffic Barrier	Bridge Deck	with Tree Enrichment	Stream Mitigation / Riparian Habitat	
--- Culvert	Bridge Abutment	Wetland / Riparian Planting	Existing Water Body	
--- Swale	Bridge Piers	Native Tree Planting		
--- Planted Swale		Exotic Tree Planting		



A1 REPRODUCTION SCALE  
0mm  
20  
40  
60  
80  
100

A3 REPRODUCTION SCALE  
0mm  
10  
20  
30  
40  
50



- KEY CPTED CONSIDERATIONS:**
- NO TALL BARRIERS OR ELEMENTS THAT CREATE 'OUTSIDE ROOMS'/PLACES TO HIDE.
  - CLEAR LINES OF SIGHT AT INTERSECTIONS.
  - ENSURE CLEAR VIEWS TO THE EXITS OF CWB.
  - REMOVE TALL VEGETATION FROM CWB INTERSECTIONS.
  - THE 'TAGGABILITY' OF MATERIALS AND SURFACES.
  - LOW LEVEL ORIENTATION LIGHT AT OTAIHANGA CROSSING POINT.

No.	Revision	By	Chk	Chk.V	Appd	Date
C	KDCDC COMMENTS FOR CERTIFICATION					03-02-14
B	PRELIMINARY ISSUE					20-12-13
A						19-09-13

**NZ TRANSPORT AGENCY**  
WAKA KOTAHĪ

**MacKays to Peka Peka**  
Wellington Northern Corridor

Project: SH1 MACKAYS TO PEKA PEKA EXPRESSWAY  
RP 1012/0.00 TO 1023/5.00

Title: SSMP 5 & 6 - SHEET 6 BRIDGE MASTERPLAN

Document No.: M2PP-121-D-GPH-8301

Rev: C

DETAIL DESIGN (DET)