



A1 REPRODUCTION SCALE

A3 REPRODUCTION SCALE

LIGHTING VISUALISATION - MAZENBARG ROAD BRIDGE CROSSING (WEST SIDE OF EXPRESSWAY LOOKING EAST)

DETAIL DESIGN (DET)

No.	Revision	By	Chk	Chk.V	Appd	Date
C	CERTIFIED ISSUE - REV C	VB			DC	21.07/14

Original Scale (A1)	Design	SD	21.07/14	Approved For Construction*
AS SHOWN	Drawn	VB	21.07/14	
Reduced Scale (A3)	Design Verifier			
AS SHOWN	Dwg Check			

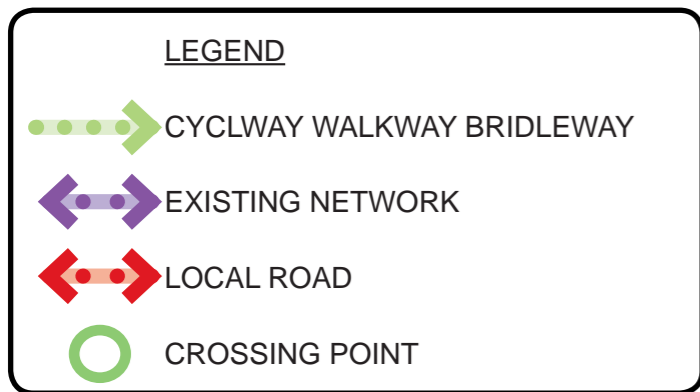
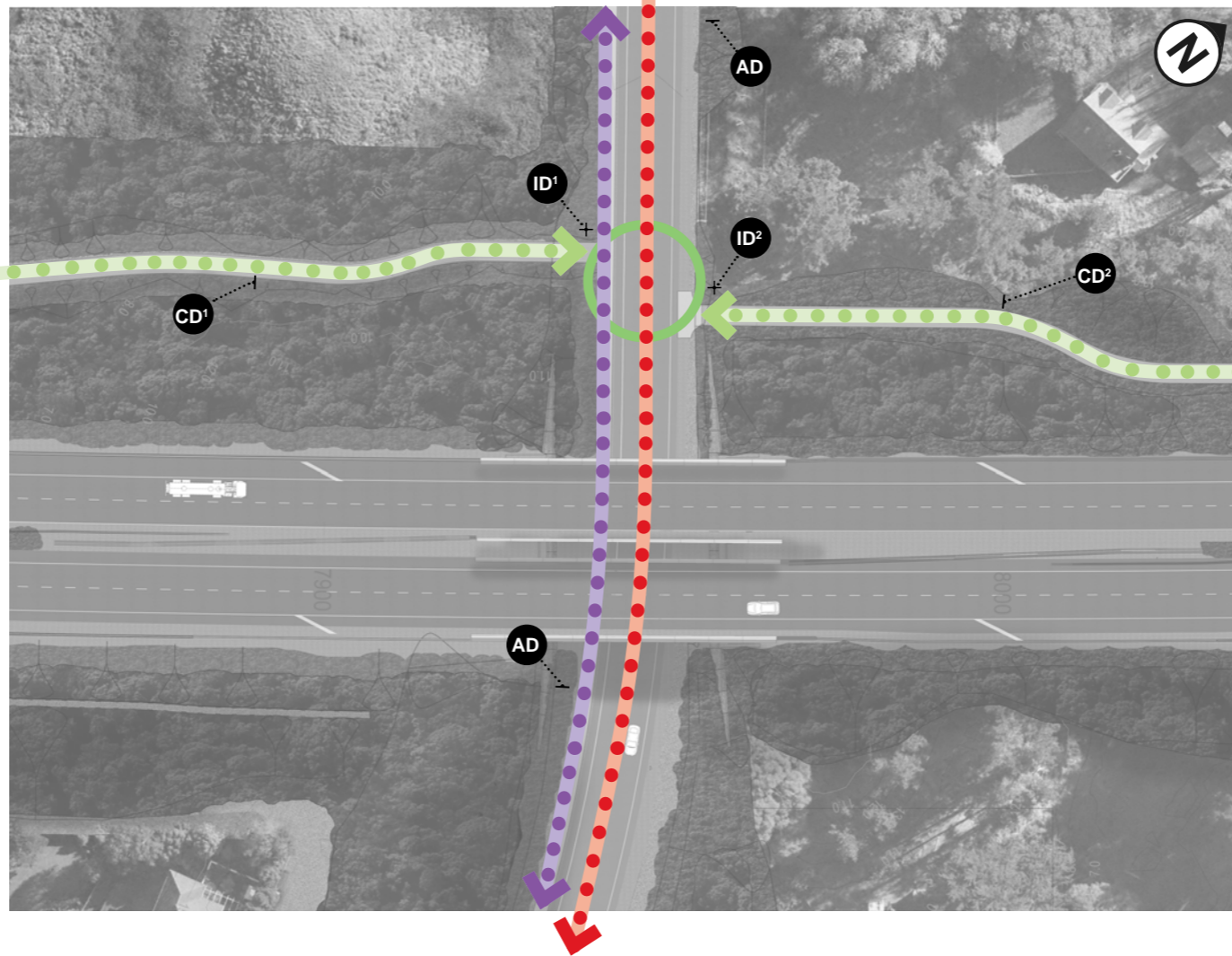
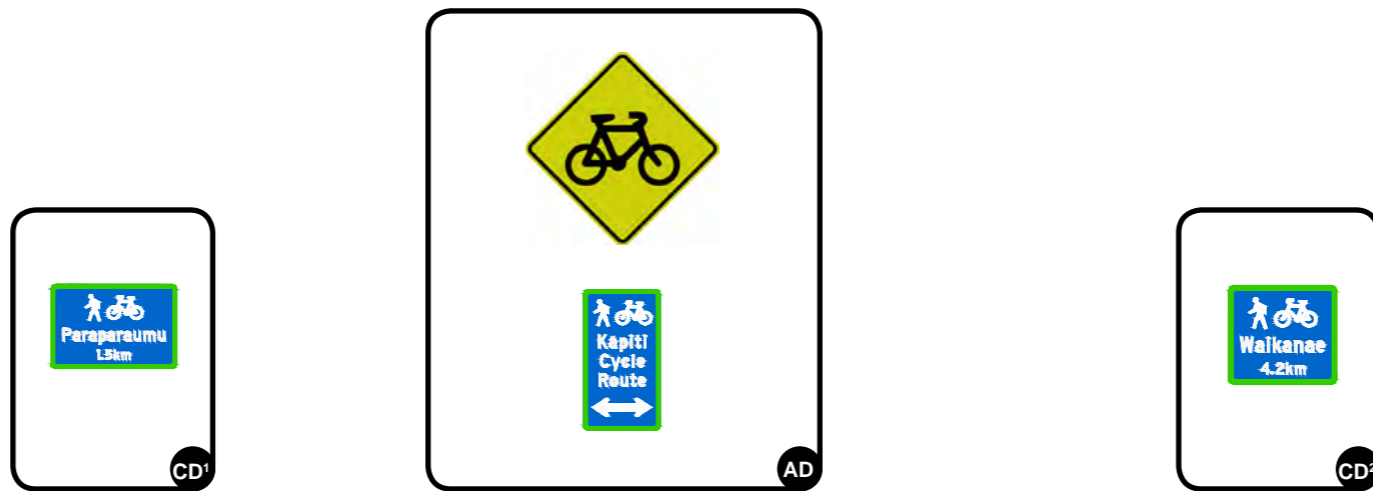
* Refer to Revision 1 for Original Signature

Project: SH1 MACKAYS TO PEKA PEKA EXPRESSWAY
RP 1012/0.00 TO 1023/5.00

Title: SHEET 20
INDICATIVE MAZENBARG BRIDGE LIGHTING

Drawing No: M2PP-121-D-DWG-8703

Rev: C



A1 REPRODUCTION SCALE

A3 REPRODUCTION SCALE

No.	Revision	By	Chk	Chk.V	Appd	Date
C	CERTIFIED ISSUE - REV C	VB		DC		21.07/14

Original Scale (A1)	Design	SD	21.07/14	Approved For Construction*
AS SHOWN	Drawn	VB	21.07/14	Date
Roadwork	Design Verifier			
Scale (A3)	Design Check			
AS SHOWN	* Refer to Revision 1 for Original Signature			



MacKays to Peka Peka
Wellington Northern Corridor

Project: SH1 MACKAYS TO PEKA PEKA EXPRESSWAY
RP 1012/0.00 TO 1023/5.00

Title: SHEET 21
SIGNAGE LOCATION PLAN

Drawing No: M2PP-121-D-DWG-8902

Rev: C

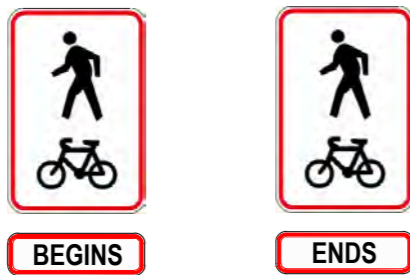
TYPICAL SIGN TYPES:

AI - ADVANCED INFO SIGNS

AT START OF ROUTE.
INCLUDES:
• MAP & INFO
• LENGTH & DURATION OF RIDE / WALK

AI - Advance Information Signs are not an essential requirement for public access tracks or cycle routes, nor are they standardised in terms of their design and layout. These signs may, if desired and appropriate, be installed at or near the start point of the route to provide detailed information, such as a map and information about the length and duration to ride etc. These signs should be clearly visible from the road, allowing cyclists and pedestrians a safe place to stop clear of the roadway or cycleway to read the information.

BE - BEGINNING AND ENDING SIGNS



BE - Begins/Ends Signs are used to indicate the start and/or end point of a cycle route. They will include route specific information. Route Begins Signs should be installed on the left hand side of the CWB immediately beyond or adjacent to any advance information sign or at a logical starting point for the cycle route.

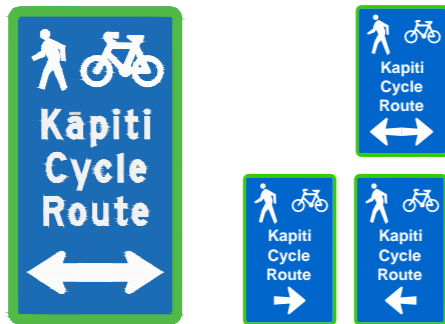
ID - INTERSECTION DIRECTION



ID - The Intersection Direction Sign is located at or as near as possible to the actual intersection. Should include both Information about the destination and the distance.

Multiple signs and destinations to be on one post

AD01 - ADVANCED DIRECTION SIGN - ON LOCAL ROAD APPROACHING CWB



AD - The purpose of the Advance Direction Sign is to give cyclists prior warning, to enable them to make decisions and, if necessary, place themselves in the best position to make any change in direction required before they reach the intersection. These signs should be used in any situation where the cyclist could easily miss making a required turn at an approaching intersection.

To occur 40-60m in advance of an intersection and should only include Information about the destination, not the distance.

CD - CONFIRMATION DIRECTION



CD - The Confirmation Direction Sign is used to confirm the direction/ destination of travel after an intersection it is intended to provide assurance to cyclists. The CD sign features a straight ahead arrow and should include both Information about the destination and the distance.

As a general rule of thumb, these signs should be installed; between 20-50m beyond an intersection where an Advance Direction Sign has been used and should generally be visible from that intersection;

Cyclists should see a CD sign at least every 15-30 minutes of typical cyclist travel, or every 5-10 km.

AD - ADVANCED DIRECTION - ON CWB



AD - The purpose of the Advance Direction Sign is to give cyclists prior warning, to enable them to make decisions and, if necessary, place themselves in the best position to make any change in direction required before they reach the intersection. These signs should be used in any situation where the cyclist could easily miss making a required turn at an approaching intersection.

To occur 40-60m in advance of an intersection and should only include Information about the destination, not the distance.

LOCAL ROAD INTERSECTION SIGNS



LR + GW - Local road (LR) and Giveaway (GW) signs should to be used where the CWB crosses a local road. These are to be located at or as near as possible to the actual intersection. Where possible the LR should be kept to one per intersection and be able to be read by people on either side of the intersection. Both the LR and GW should share the same post and or be incorporated onto an existing post.

A1 REPRODUCTION SCALE
0mm
20
40
60
80
100
A3 REPRODUCTION SCALE
0mm
10
20
30
40
50

No.	Revision	By	Chk	Chk.V	Appd	Date
C	CERTIFIED ISSUE - REV C	VB		DC		21.07/14

Original Scale (A1)	Design	SD	21.07/14	Approved For Construction*
AS SHOWN	Drawn	VB	21.07/14	Date
Scale (A3)	Design Verifier			
AS SHOWN	Design Check			

* Refer to Revision 1 for Original Signature

Project	SH1 MACKAYS TO PEKA PEKA EXPRESSWAY RP 1012/0.00 TO 1023/5.00
---------	--

Title	SHEET 22 CWB SIGN TYPE SUMMARY
-------	-----------------------------------

Drawing No.	M2PP-121-D-DWG-8901	Rev.	C
-------------	---------------------	------	---



MATCHLINE REFER: M2PP-41R-D-DWG-G-8702

380 **410**

RETAIN

CYCLEWAY (CWB)

EXPRESSWAY NORTHBOUND

EXPRESSWAY SOUTHBOUND

7000

7100

7200

A1 REPRODUCTION SCALE

A3 REPRODUCTION SCALE

VEGETATION TO BE RETAINED

- TERRESTRIAL VALUED VEGETATION (CONSENT CONDITION G.41 c) i)
- WETLAND VALUED VEGETATION (CONSENT CONDITION G.41 c) ii)
- TERRESTRIAL VEGETATION - NATIVE
- TERRESTRIAL VEGETATION - EXOTIC
- WETLAND VEGETATION - NATIVE
- WETLAND VEGETATION - EXOTIC / OPEN WATER
- LANDFORM TO BE RETAINED
- DESIGNATION

NOTES:

- AREAS OF VEGETATION IDENTIFIED TO BE RETAINED ARE SUBJECT TO MARKING ON SITE BY AN ECOLOGIST OR LANDSCAPE ARCHITECT PRIOR TO TEMPORARY FENCING.
- REMOVAL OF ANY VEGETATION MARKED FOR RETENTION MUST BE APPROVED BY A LANDSCAPE ARCHITECT OR ECOLOGIST.
- COMPLIANCE WITH THE ABOVE IS A REQUIREMENT OF THE CONSENT CONDITIONS.

No.	Revision	By	CHK	CHK.V	Appd	Date
3	FOR CONSTRUCTION	MP	MP	SD	DC	27.08.14
2	FOR KCDC CERTIFICATION	MP	MP	BF	PB	08.07.14
1	FOR CONSTRUCTION - WEED CLEARANCE	MP	GFB	DH	DC	17.03.14

Original Scale (A1)	Design	Drawn	Dsg Verifier	Dsg Check	Approved For Construction*
1:500	S. DUNN	M. POWELL	B. FAULKNER	G. F-B	P. BRADSHAW
Reduced Scale (A3)					
1:1000					

* Refer to Revision 1 for Original Signature



MacKays to Peka Peka
Wellington Northern Corridor

Project: SH1 MACKAYS TO PEKA PEKA EXPRESSWAY
RP 1012/0.00 TO 1023/5.00

Title: KAPITI RD TO MAZENGARB RD VEGETATION TO BE RETAINED SHEET 1

Drawing No: M2PP-41R-D-DWG-8701
Rev: 3

410

ORIGINAL DRAWING
IN COLOUR

FOR CONSTRUCTION



MATCHLINE REFER: M2PP-41R-D-DWG-8701

MATCHLINE REFER: M2PP-41R-D-DWG-8703



A1 REPRODUCTION SCALE
0mm

A3 REPRODUCTION SCALE
0mm

VEGETATION TO BE RETAINED

	TERRESTRIAL VALUED VEGETATION (CONSENT CONDITION G.41 c) ii)
	WETLAND VALUED VEGETATION (CONSENT CONDITION G.41 c) ii)
	TERRESTRIAL VEGETATION - NATIVE
	TERRESTRIAL VEGETATION - EXOTIC
	WETLAND VEGETATION - NATIVE
	WETLAND VEGETATION - EXOTIC / OPEN WATER
	LANDFORM TO BE RETAINED
	DESIGNATION

NOTES:

- AREAS OF VEGETATION IDENTIFIED TO BE RETAINED ARE SUBJECT TO MARKING ON SITE BY AN ECOLOGIST OR LANDSCAPE ARCHITECT PRIOR TO TEMPORARY FENCING.
- REMOVAL OF ANY VEGETATION MARKED FOR RETENTION MUST BE APPROVED BY A LANDSCAPE ARCHITECT OR ECOLOGIST.
- COMPLIANCE WITH THE ABOVE IS A REQUIREMENT OF THE CONSENT CONDITIONS.

No.	Revision	By	CHK	CHK.V	Appd	Date
3	FOR CONSTRUCTION	MP	MP	SD	DC	27.08.14
2	FOR KDCDC CERTIFICATION	MP	MP	BF	PB	08.07.14
1	FOR CONSTRUCTION - WEED CLEARANCE	MP	GFB	DH	DC	17.03.14

Original Scale (A1)	Design	S. DUNN	24.01.14	Approved For Construction*
1:500	Drawn	M. POWELL	24.01.14	P. BRADSHAW
Reduced Scale (A3)	Dwg. Verifier	B. FAULKNER	17.03.14	
1:1000	Dwg. Check	G. F-B	17.03.14	Date: 19.03.14

* Refer to Revision 1 for Original Signature



MacKays to Peka Peka
Wellington Northern Corridor

Project: SH1 MACKAYS TO PEKA PEKA EXPRESSWAY
RP 1012/0.00 TO 1023/5.00

410

ORIGINAL DRAWING
IN COLOUR

FOR CONSTRUCTION

Title: KAPITI RD TO MAZENGARB RD
VEGETATION TO BE RETAINED
SHEET 2

Drawing No: M2PP-41R-D-DWG-8702
Rev. 3



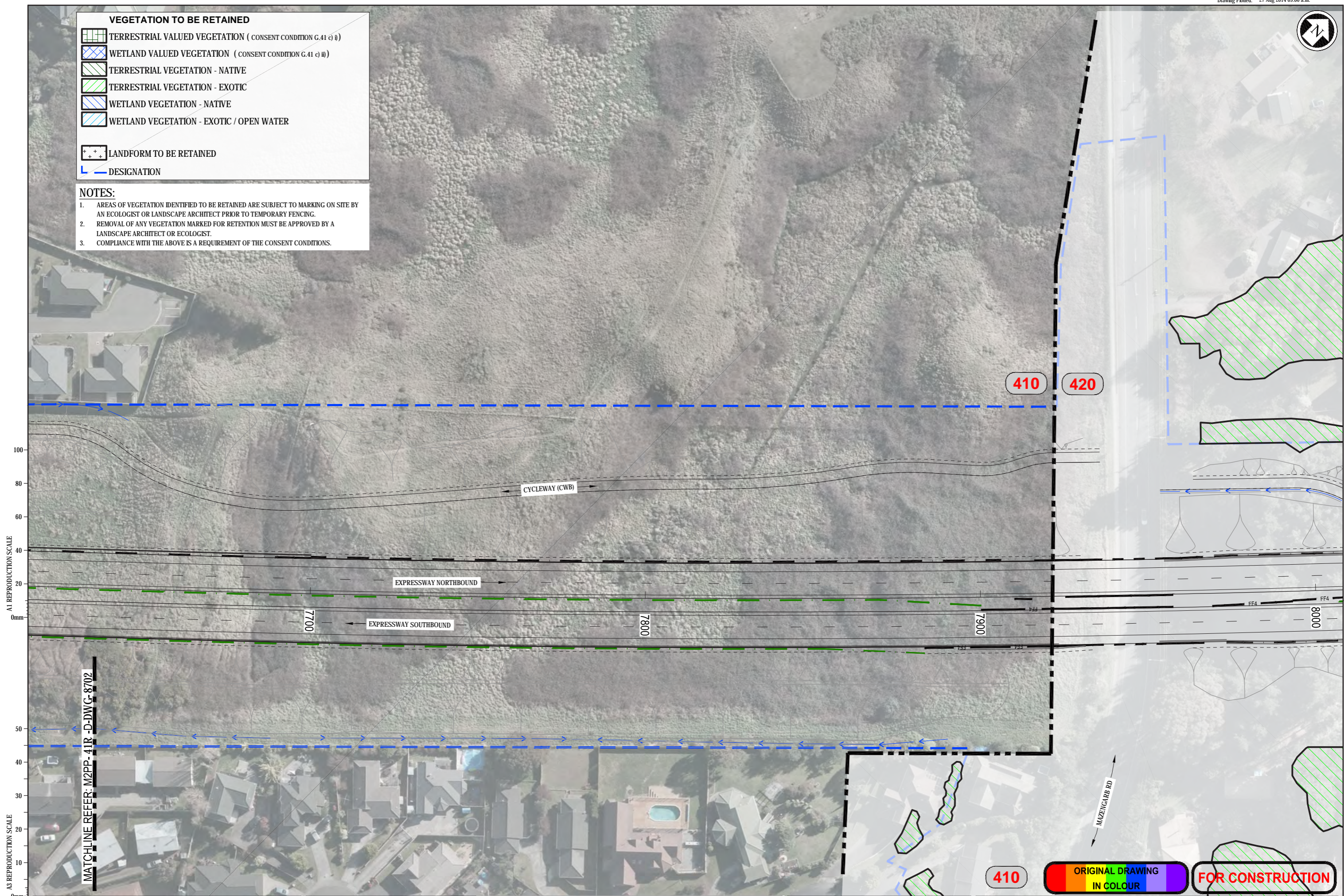
VEGETATION TO BE RETAINED

- TERRESTRIAL VALUED VEGETATION (CONSENT CONDITION G.41 c i)
- WETLAND VALUED VEGETATION (CONSENT CONDITION G.41 c ii)
- TERRESTRIAL VEGETATION - NATIVE
- TERRESTRIAL VEGETATION - EXOTIC
- WETLAND VEGETATION - NATIVE
- WETLAND VEGETATION - EXOTIC / OPEN WATER

LANDFORM TO BE RETAINED

DESIGNATION

- NOTES:**
1. AREAS OF VEGETATION IDENTIFIED TO BE RETAINED ARE SUBJECT TO MARKING ON SITE BY AN ECOLOGIST OR LANDSCAPE ARCHITECT PRIOR TO TEMPORARY FENCING.
 2. REMOVAL OF ANY VEGETATION MARKED FOR RETENTION MUST BE APPROVED BY A LANDSCAPE ARCHITECT OR ECOLOGIST.
 3. COMPLIANCE WITH THE ABOVE IS A REQUIREMENT OF THE CONSENT CONDITIONS.



A1 REPRODUCTION SCALE

A3 REPRODUCTION SCALE

MATCHLINE REFER: M2PP-41R-D-DWG-8702

No.	Revision	By	CHK	CHK.V	Appd	Date
3	FOR CONSTRUCTION	MP	MP	SD	DC	27.08.14
2	FOR KCDC CERTIFICATION	MP	MP	BF	PB	08.07.14
1	FOR CONSTRUCTION - WEED CLEARANCE	MP	GFB	DH	DC	17.03.14

Original Scale (A1)	Design	F.BAGGALEY	31.01.14	Approved For Construction*
1:500	Drawn	M.POWELL	31.01.14	P. BRADSHAW
Reduced Scale (A3)	Dwg. Verifier	B. FAULKNER	17.03.14	
1:1000	Dwg. Check	G. F-B	17.03.14	Date 19.03.14

NZ TRANSPORT AGENCY
WAKA KOTAHĪ

MacKays to Peka Peka
Wellington Northern Corridor

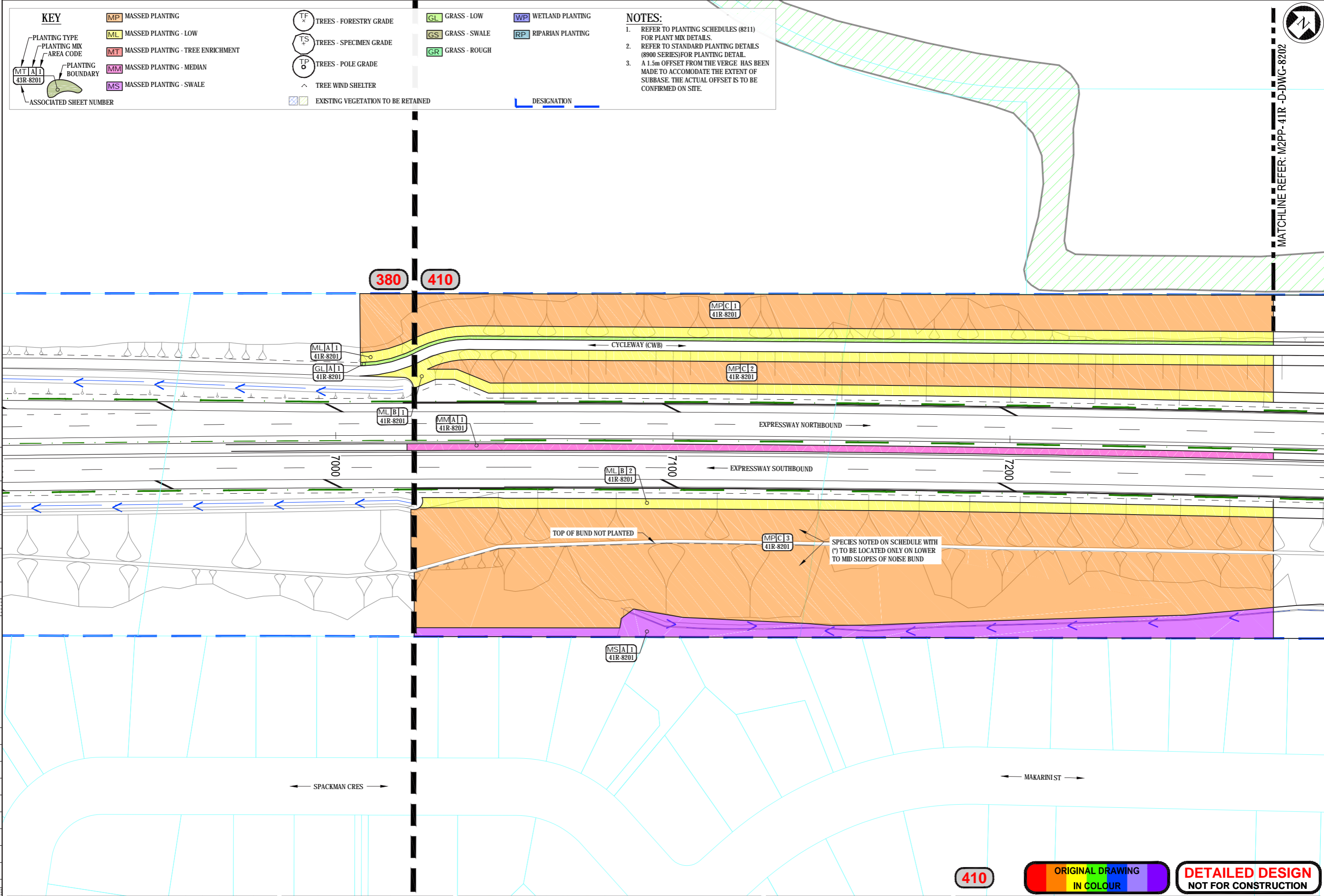
Project: SH1 MACKAYS TO PEKA PEKA EXPRESSWAY
RP 1012/0.00 TO 1023/5.00

Title: KAPITI RD TO MAZENGARB RD VEGETATION TO BE RETAINED
SHEET 3

Drawing No: M2PP-41R-D-DWG-8703
Rev: 3



MATCHLINE REFER: M2PP-41R-D-DWG-8202



KEY

PLANTING TYPE
PLANTING MIX
AREA CODE

PLANTING BOUNDARY

ASSOCIATED SHEET NUMBER

MP MASSED PLANTING

ML MASSED PLANTING - LOW

MT MASSED PLANTING - TREE ENRICHMENT

MM MASSED PLANTING - MEDIAN

MS MASSED PLANTING - SWALE

TF TREES - FORESTRY GRADE

TS TREES - SPECIMEN GRADE

TP TREES - POLE GRADE

^ TREE WIND SHELTER

EXISTING VEGETATION TO BE RETAINED

GL GRASS - LOW

GS GRASS - SWALE

GR GRASS - ROUGH

WP WETLAND PLANTING

RP RIPARIAN PLANTING

DESIGNATION

NOTES:

- REFER TO PLANTING SCHEDULES (8211) FOR PLANT MIX DETAILS.
- REFER TO STANDARD PLANTING DETAILS (8900 SERIES) FOR PLANTING DETAIL.
- A 1.5m OFFSET FROM THE VERGE HAS BEEN MADE TO ACCOMMODATE THE EXTENT OF SUBBASE. THE ACTUAL OFFSET IS TO BE CONFIRMED ON SITE.

A1 REPRODUCTION SCALE
0mm
20
40
60
80
100

A3 REPRODUCTION SCALE
0mm
10
20
30
40
50

No.	Revision	By	Chk	Chk.V	Appd	Date
B	FOR DETAILED DESIGN	MP	G.F-B	DH	DC	19.08.14
A	85% REVIEW	MP			DC	22.07.14

Original Scale (A1)	Design	S DUNN	12.06.14	Approved For Construction*
1:500	Drawn	M POWELL	12.06.14	
Reduced Scale (A3)	Dwg Verifier	B.EVANS	19.08.14	
1:1000	Dwg Check	J.VERANO	19.08.14	

* Refer to Revision 1 for Original Signature

NZ TRANSPORT AGENCY
WAKA KOTAHI

MacKays to Peka Peka
Wellington Northern Corridor

Project **SH1 MACKAYS TO PEKA PEKA EXPRESSWAY**
RP 1012/0.00 TO 1023/5.00

Title: **KAPITI TO MAZENGARB PLANTING PLANS SHEET 1**

Drawing No: **M2PP-41R-D-DWG-8201**

Rev: **B**

410 ORIGINAL DRAWING IN COLOUR DETAILED DESIGN NOT FOR CONSTRUCTION

KEY

PLANTING TYPE PLANTING MIX AREA CODE	MASSED PLANTING	TREES - FORESTRY GRADE	GRASS - LOW	WETLAND PLANTING
PLANTING BOUNDARY	MASSED PLANTING - LOW	TREES - SPECIMEN GRADE	GRASS - SWALE	RIPARIAN PLANTING
ASSOCIATED SHEET NUMBER	MASSED PLANTING - TREE ENRICHMENT	TREES - POLE GRADE	GRASS - ROUGH	
	MASSED PLANTING - MEDIAN	TREE WIND SHELTER		
	MASSED PLANTING - SWALE	EXISTING VEGETATION TO BE RETAINED		DESIGNATION

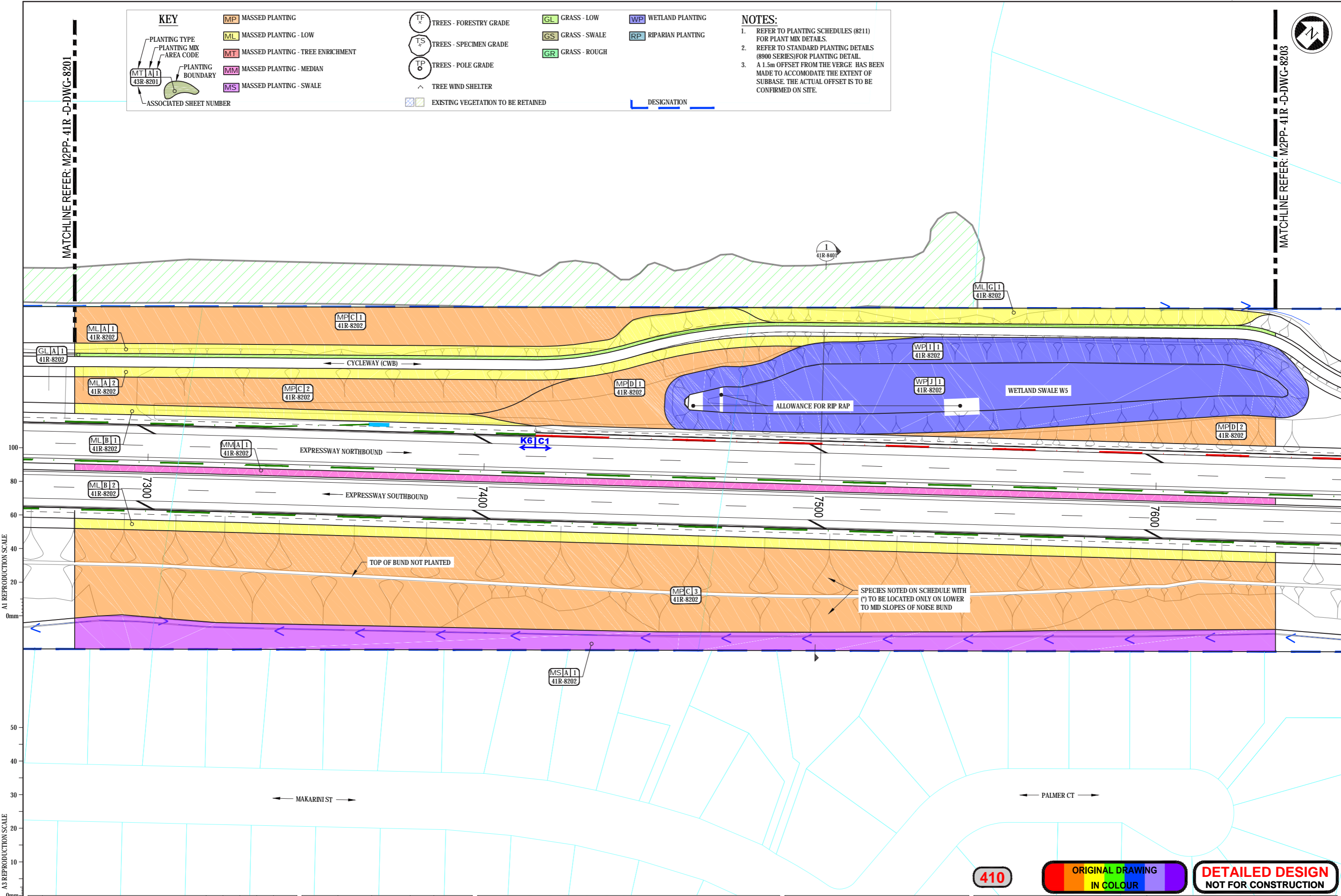
NOTES:

- REFER TO PLANTING SCHEDULES (8211) FOR PLANT MIX DETAILS.
- REFER TO STANDARD PLANTING DETAILS (8900 SERIES) FOR PLANTING DETAIL.
- A 1.5m OFFSET FROM THE VERGE HAS BEEN MADE TO ACCOMMODATE THE EXTENT OF SUBBASE. THE ACTUAL OFFSET IS TO BE CONFIRMED ON SITE.



MATCHLINE REFER: M2PP-41R-D-DWG-8201

MATCHLINE REFER: M2PP-41R-D-DWG-8203



A1 REPRODUCTION SCALE

A3 REPRODUCTION SCALE

No.	Revision	By	Chk	Chk.V	Appd	Date
B	FOR DETAILED DESIGN	MP	G.F-B	DH	DC	19.08.14
A	85% REVIEW	MP			DC	22.07.14

Original Scale (A1)	Design	S DUNN	12.06.14	Approved For Construction*
1:500	Drawn	M POWELL	12.06.14	
Reduced Scale (A3)	Dwg Verifier	B.EVANS	19.08.14	
1:1000	Dwg Check	J.VEBANO	19.08.14	

* Refer to Revision 1 for Original Signature



Project: SH1 MACKAYS TO PEKA PEKA EXPRESSWAY
RP 1012/0.00 TO 1023/5.00

410



Title: KAPITI TO MAZENGARB PLANTING PLANS SHEET 2

Drawing No: M2PP-41R-D-DWG-8202

Rev. B

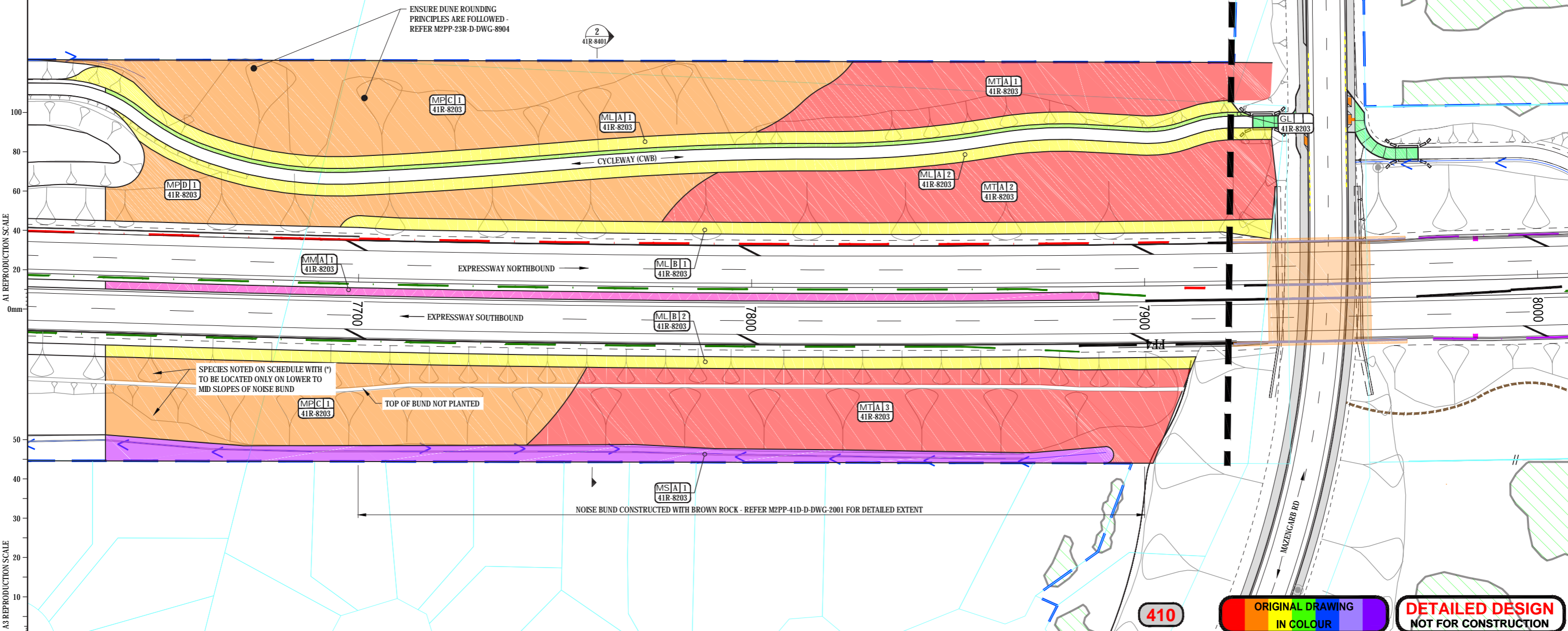
KEY

PLANTING TYPE PLANTING MIX AREA CODE	MASSED PLANTING	TREES - FORESTRY GRADE	GRASS - LOW	WETLAND PLANTING
PLANTING BOUNDARY	MASSED PLANTING - LOW	TREES - SPECIMEN GRADE	GRASS - SWALE	RIPARIAN PLANTING
ASSOCIATED SHEET NUMBER	MASSED PLANTING - TREE ENRICHMENT	TREES - POLE GRADE	GRASS - ROUGH	
	MASSED PLANTING - MEDIAN	TREE WIND SHELTER		
	MASSED PLANTING - SWALE	EXISTING VEGETATION TO BE RETAINED		

NOTES:

- REFER TO PLANTING SCHEDULES (8211) FOR PLANT MIX DETAILS.
- REFER TO STANDARD PLANTING DETAILS (8900 SERIES) FOR PLANTING DETAIL.
- A 1.5m OFFSET FROM THE VERGE HAS BEEN MADE TO ACCOMMODATE THE EXTENT OF SUBBASE. THE ACTUAL OFFSET IS TO BE CONFIRMED ON SITE.

MATCHLINE REFER: M2PP-41R-D-DWG-8202



A1 REPRODUCTION SCALE

A3 REPRODUCTION SCALE

ORIGINAL DRAWING
IN COLOUR

DETAILED DESIGN
NOT FOR CONSTRUCTION

No.	Revision	By	Clk	Chk	Appd	Date
B	FOR DETAILED DESIGN	MP	G F-B	DH	DC	19.08.14
A	85% REVIEW	MP			DC	22.07.14

Original Scale (A1)	Design	Drawn	Checked	Approved For Construction
1:500	S DUNN	M POWELL	12.06.14	
Reduced Scale (A3)	1:1000	B EVANS	19.08.14	
		J VERANO	19.08.14	

* Refer to Revision 1 for Original Signature

NZ TRANSPORT AGENCY
WAKA KOTAHU

MacKays to Peka Peka
Wellington Northern Corridor

Project: SH1 MACKAYS TO PEKA PEKA EXPRESSWAY
RP 1012/0.00 TO 1023/5.00

Title: KAPITI TO MAZENGARB PLANTING PLANS SHEET 3

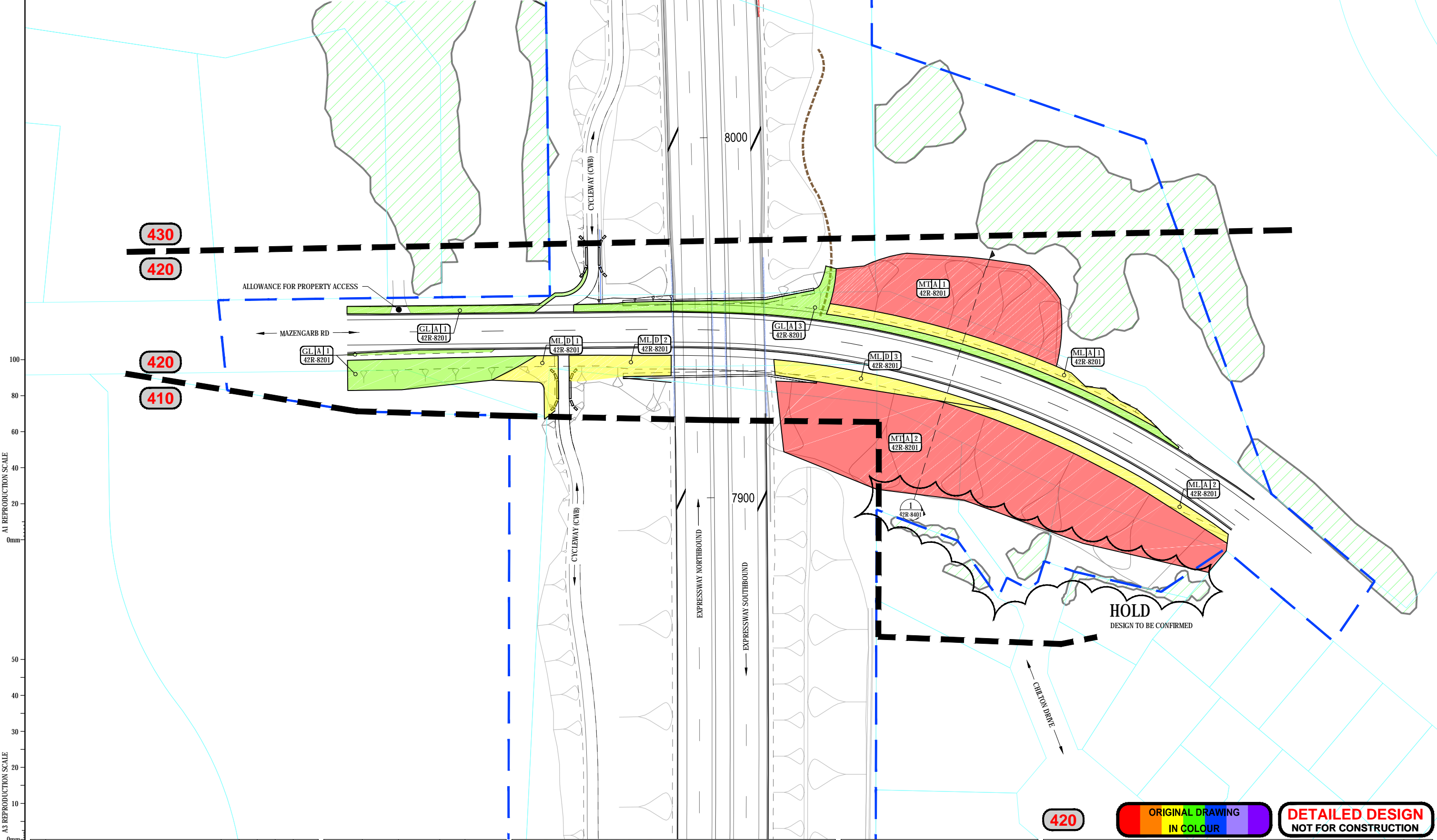
Drawing No: M2PP-41R-D-DWG-8203
Rev: B

KEY

PLANTING TYPE	MASSED PLANTING	TREES - FORESTRY GRADE	GRASS - LOW	WETLAND PLANTING
PLANTING MIX AREA CODE	MASSED PLANTING - LOW	TREES - SPECIMEN GRADE	GRASS - SWALE	RIPARIAN PLANTING
PLANTING BOUNDARY	MASSED PLANTING - TREE ENRICHMENT	TREES - POLE GRADE	GRASS - ROUGH	
ASSOCIATED SHEET NUMBER	MASSED PLANTING - MEDIAN	TREE WIND SHELTER		
	MASSED PLANTING - SWALE	EXISTING VEGETATION TO BE RETAINED		

NOTES:

- REFER TO PLANTING SCHEDULES (8211) FOR PLANT MIX DETAILS.
- REFER TO STANDARD PLANTING DETAILS (8900 SERIES) FOR PLANTING DETAIL.
- A 1.5m OFFSET FROM THE VERGE HAS BEEN MADE TO ACCOMMODATE THE EXTENT OF SUBBASE. THE ACTUAL OFFSET IS TO BE CONFIRMED ON SITE.



A1 REPRODUCTION SCALE
0mm
20
40
60
80
100

A3 REPRODUCTION SCALE
0mm
10
20
30
40
50

No.	Revision	By	Chk	Chk.V	Appd	Date
B	FOR DETAILED DESIGN	MP				.08.14
A	85% REVIEW	MP		DC		22.07.14

Original Scale (A1)	Design	S DUNN	02.07.14	Approved For Construction*
1:500	Drawn	M POWELL	02.07.14	
Reduced Scale (A3)	Dwg Verifier		.08.14	Date
1:1000	Dwg Check		.08.14	

* Refer to Revision 1 for Original Signature

NZ TRANSPORT AGENCY
WAKA KOTAHI

MacKays to Peka Peka
Wellington Northern Corridor

Project: SH1 MACKAYS TO PEKA PEKA EXPRESSWAY
RP 1012/0.00 TO 1023/5.00

Title: MAZENGARB ROAD CROSSING PLANTING PLAN

Drawing No: M2PP-42R-D-DWG-8201
Rev: B

420 ORIGINAL DRAWING IN COLOUR DETAILED DESIGN NOT FOR CONSTRUCTION

PLAN REFERENCE	
TOTAL	

AREA ADJUSTED FOR SLOPE
 MT MIX - 1.0M CRS MASSED PLANTING, ENRICHMENT 10.0M CRS, PLANT CENTRES (METRES)
 MULCH TYPE OM = ORGANIC MULCH, GM = GRADED GRAVEL MULCH, BC = BIOCOIR
 N = NO MULCH (IN RIPARIAN / WETLAND ZONES), WM = WOOL MAT SQUARE (RIPARIAN EROSION)

PLANT TYPE	MIX	BOTANICAL NAME	COMMON NAME	GRADE	% MIX	NOTES		
MASSED LOW EDGE PLANTING - ADJACENT TO CYCLIFWAY								
ML A		Acaena novae-zelandiae	Red bidibidi	1.0 litre	10%	front edge	475	no
ML A		Austroderia fulvida	syn Cortaderia, toetoe	1.0 litre	5%	back	238	no
ML A		Carex dipsacea	Treasel sedge	1.0 litre	10%	front edge	475	no
ML A		Carex solandri	Forest sedge, Solander's sedge	1.0 litre	10%	front edge	475	no
ML A		Carex virgata	Swamp sedge	1.0 litre	5%	mid back	238	no
ML A		Coprosma areolata	Thin leaved Coprosma	1.0 litre	5%	back	238	no
ML A		Coprosma propinqua	Mingimingi	1.0 litre	5%	mid back	238	no
ML A		Coprosma repens	Taupata	1.0 litre	10%	mid back	475	no
ML A		Ficinia nodosa	Wiwi, Knobby club rush	1.0 litre	10%	front edge	475	no
ML A		Hebe stricta	Koromiko	1.0 litre	10%	back	475	no
ML A		Muehlenbeckia complexa	Pohuehue, wire vine	1.0 litre	20%	front edge	950	no
MASSED LOW EDGE PLANTING - ADJACENT TO EXPRESSWAY								
ML B		Acaena novae zelandiae	Red bidibidi	1.0 litre	10%	front edge	559	no
ML B		Austroderia fulvida	syn Cortaderia, toetoe	1.0 litre	5%	back	280	no
ML B		Carex dipsacea	Treasel sedge	1.0 litre	10%	front edge	559	no
ML B		Carex solandri	Forest sedge, Solander's sedge	1.0 litre	10%	front edge	559	no
ML B		Carex virgata	Swamp sedge	1.0 litre	5%	mid back	280	no
ML B		Coprosma acerosa	Sand Coprosma	1.0 litre	10%	front mid	559	no
ML B		Coprosma areolata	Thin leaved Coprosma	1.0 litre	5%	back	280	no
ML B		Coprosma propinqua	Mingimingi	1.0 litre	5%	mid back	280	no
ML B		Coprosma repens	Taupata	1.0 litre	5%	mid back	280	no
ML B		Ficinia nodosa	Wiwi, Knobby club rush	1.0 litre	10%	front edge	559	no
ML B		Hebe stricta	Koromiko	1.0 litre	5%	back	280	no
MASSED LOW EDGE PLANTING WITH SMALL SCREEN TREE - LIMITED WIDTH FOR VEGETATION BUFFER OR SCREEN PLANTING ON BOUNDARY								
ML G		Coprosma areolata	Thin leaved Coprosma	1.0 litre	5%		37	no
ML G		Coprosma propinqua	Mingimingi	1.0 litre	10%		73	no
ML G		Cordyline australis	Ti kouka	1.0 litre	5%	groups of 3 or 5	37	no
ML G		Corokia cotoneaster	Korokia taranga	1.0 litre	10%		73	no
ML G		Griselinia lucida	Puka, Broadleaf	1.0 litre	5%		37	no
ML G		Hebe stricta	Koromiko	1.0 litre	10%		73	no
ML G		Melicope ternata	Wharangi	1.0 litre	5%		37	no
ML G		Myrsine australis	Mapou, Matipo	1.0 litre	15%	back	110	no
ML G		Pittosporum tenuifolium	Kohuhu	1.0 litre	5%	back	37	no
ML G		Phormium tenax	Harakeke, Flax	1.0 litre	10%	back	73	no
ML G		Pseudopanax crassifolius	Horoeka, Lancewood	1.0 litre	15%	groups of 3 or 4	110	no
ML G		Sophora microphylla	Kowhai	1.0 litre	5%		37	no
MASSED LOW PLANTING - EDGE OF EMBANKMENT AND FOOTPATH EDGE FOR SIGHTLINES								
ML D		Muehlenbeckia complexa	Pohuehue, wire vine	1.0 litre	100%		549	no
MASSED PLANTING - GENERAL MIX								
MP C		*Aristotelia serrata	Makomako	1.0 litre	5%		1649	no
MP C		Carex lesomana	Cutty grass	1.0 litre	5%	east toe of bund	1649	no
MP C		*Carpodetus serratus	Putaputaweta	1.0 litre	5%		1649	no
MP C		Coprosma propinqua	Mingimingi	1.0 litre	10%		3299	no
MP C		Coprosma robusta	Karamu	1.0 litre	12%		3958	no
MP C		Cordyline australis	Ti kouka	1.0 litre	5%		1649	no
MP C		Griselinia lucida	Puka, Broadleaf	1.0 litre	2%		660	no
MP C		Hebe stricta	Koromiko	1.0 litre	8%	east toe of bund	2639	no
MP C		*Kunzea ericoides	Kanuka	1.0 litre	12%		3958	no
MP C		*Melicytus ramiflorus	Mahoe	1.0 litre	5%		1649	no
MP C		Melicope ternata	Wharangi	1.0 litre	3%		990	no
MP C		*Myoporum laetum	Ngao	1.0 litre	3%		990	no
MP C		Myrsine australis	Mapou, Matipo	1.0 litre	7%		2309	no
MP C		Olearia solandri	Coastal tree daisy	1.0 litre	5%		1649	no
MP C		*Pittosporum tenuifolium	Kohuhu	1.0 litre	8%		2639	no
MP C		Pseudopanax arboreus	Whauwhaupaku, Fivefinger	1.0 litre	2%		660	no
MP C		*Sophora microphylla	Kowhai	1.0 litre	3%		990	no
MASSED PLANTING - SCREEN NOISEWALL, ADJOINS A WETLAND								
MP D		Austroderia fulvida	syn Cortaderia, toetoe	1.0 litre	5%		75	no
MP D		Phormium tenax	Harakeke, Flax	1.0 litre	10%		150	no
MP D		Coprosma propinqua	Mingimingi	1.0 litre	10%		150	no
MP D		Coprosma tenuicaulis	Hukihuki, swamp Coprosma	1.0 litre	5%		75	no
MP D		Cordyline australis	Ti kouka	1.0 litre	10%	large groups	150	no
MP D		leptospermum scoparium	Manuka	1.0 litre	21%		316	no
MP D		Pseudopanax crassifolius	Horoeka, Lancewood	1.0 litre	7%		105	no
MP D		Carex secta	Pukio, Purei	1.0 litre	10%		150	no
MP D		Cyperus ustulatus	Toetoe upokotangata, Giant umbrel	1.0 litre	20%		301	no
MP D		Dacrydium dacrydioides	Kalikatea	Pb18	2%	mid zone groups	30	no

MASSED PLANTING + TREE ENRICHMENT - GENERAL HARDY MIX (LINK TO 430)								
MT A		Aristotelia serrata	Makomako	1.0 litre	5%		581	no
MT A		Carpodetus serratus	Putaputaweta	1.0 litre	5%		581	no
MT A		Coprosma areolata	Thin leaved Coprosma	1.0 litre	5%		581	no
MT A		Coprosma repens	Taupata	1.0 litre	5%		581	no
MT A		Coprosma robusta	Karamu	1.0 litre	5%	east toe of bund	581	no
MT A		Griselinia lucida	Puka, Broadleaf	1.0 litre	5%		581	no
MT A		Hebe stricta	Koromiko	1.0 litre	5%	east toe of bund	581	no
MT A		Kunzea ericoides	Kanuka	1.0 litre	15%		1742	no
MT A		leptospermum scoparium	Manuka	1.0 litre	10%		1161	no
MT A		Melicope ternata	Wharangi	1.0 litre	5%	east toe of bund	581	no
MT A		Melicytus ramiflorus	Mahoe	1.0 litre	5%		581	no
MT A		Myoporum laetum	Ngao	1.0 litre	5%		581	no
MT A		Myrsine australis	Mapou, Matipo	1.0 litre	5%		581	no
MT A		Olearia solandri	Coastal tree daisy	1.0 litre	5%		581	no
MT A		Phormium tenax	Harakeke, Flax	1.0 litre	5%	east toe of bund	581	no
MT A		Pittosporum eugeninoides	Tarata, Lemonwood	1.0 litre	5%		581	no
MT A		Pittosporum tenuifolium	Kohuhu	1.0 litre	5%		581	no
MT A		*Knightia excelsa	Rewarewa	Pb18	30%	enrich	348	no
MT A		*Podocarpus totara	Totara	Pb18	10%	enrich	116	no
MT A		Alectryon excelsus	Titoki	Pb18	20%	enrich	232	no
MT A		*Dysoxylum spectabile	Konekohe	Pb18	40%	enrich	465	no
WETLAND PLANTING - EDGE BARRIER AND NOISEWALL SCREENING								
WP I		Carex secta	Pukio, Purei	0.5 litre	40%		1879	no
WP I		Cordyline australis	Ti kouka	1.0 litre	5%		235	no
WP I		Cyperus ustulatus	Toetoe upokotangata, Giant umbrella sedge	0.5 litre	30%	cwb edge	1410	no
WP I		leptospermum scoparium	Manuka	1.0 litre	15%	noise wall edge and groups to CWB	705	no
WP I		Phormium tenax	Harakeke, Flax	0.5 litre	10%	noise wall edge	470	no
WETLAND PLANTING - WETLAND SWALE WS LOWER SLOPES AND BASE								
WP J		Carex secta	Pukio, Purei	0.5 litre	30%		1113	no
WP J		Carex geminata	Cutty grass		50%		1855	no
WP J		Cyperus ustulatus	Toetoe upokotangata, Giant umbrella sedge	0.5 litre	20%		742	no
MASSED MEDIAN PLANTING								
MM A		Ficinia nodosa	Wiwi, Knobby club rush	1.0 litre	100%		3083	no
MASSED SWALE PLANTING								
MS A		Apodasmia similis	Oioi	0.5 litre	100%	no mulch	8579	no
GRASS								
GL A		Grass low grow mix	sown, close mow to 100mm	sow			1933	m ²

A3 REPRODUCTION SCALE
0mm 20 40 60 80 100

PLANTING SCHEDULE

No.	Revision	By	Chk	Chk.V	Appd	Date
A	FOR DETAILED DESIGN	MP				.08.14

Original Scale (A1)	Design	S DUNN	23.06.14	Approved For Construction
NTS	Drawn	M POWELL	23.06.14	
Reduced Scale (A3)	Dwg Checker		.08.14	Date
NTS	Dwg Check		.08.14	Date

Project: SH1 MACKAYS TO PEKA PEKA EXPRESSWAY
 RP 1012/0.00 TO 1023/5.00

Title: KAPITI TO MAZENGARB PLANTING SCHEDULE

Drawing No: M2PP-41R-D-DWG-8211
 Rev: A

410 420 DETAILED DESIGN NOT FOR CONSTRUCTION