



CHILTON DRIVE PLANTING KEY

-  **Vegetation High - small ornamental tree**
 - Prunus 'Shimidsu Sakura' (flowering cherry) and other varieties
 - Sophora tetraptera (kowhai)
 - Azara microphylla (vanilla tree)
 - Leptospermum 'Copper Sheen'
 - Pittosporum eugenioides (tarata)
 - Melicope ternata (wharangi)
-  **Vegetation Low- up to 1 metre high shrubs and groundcovers**
 - Phormium cookianum varieties (coloured flax)
 - Hebe
 - Raphiolepis (Indian hawthorn)
 - Coprosma 'Poor Knights' and other varieties
 - Sophora 'Dragons gold'
-  **Existing vegetation to be retained**
-  **Grass**

General	Urban Design	Landscape	Ecology	CWB
Designation Boundary	Concrete Bridge Barrier	Individual Retained Trees	Retained Valued Terrestrial Vegetation	Loose Chip CWB
Wire Barrier	Concrete Noise Wall	Retained Vegetation	Retained Valued Wetland Vegetation	Chip Seal CWB
W-Barrier	Culvert Headwall	Grass	Planted Indigenous Terrestrial Habitat	Concrete CWB
Barrier Transition	Retaining Wall	Massed Planting	Planted Indigenous Wetland Habitat	Existing Access Track or CWB
Concrete Traffic Barrier	Bridge Deck	Massed Planting with Tree Enrichment	Stream Mitigation / Riparian Habitat	
Culvert	Bridge Abutment	Wetland / Riparian Planting	Existing Water Body	
Swale	Bridge Piers	Massed planting low	Batter Slope	
Planted Swale	2.0M Timber Noise Fence	Specimen Tree	Tadpole	
Flood Storage Area				
Visualisation Viewpoint				

A1 REPRODUCTION SCALE
0mm

A3 REPRODUCTION SCALE
0mm

C	CERTIFIED ISSUE - REV C	VB	DC	21/07/14	Original Scale (A1) 1:250 Reduced Scale (A3) 1:500	Design Drawn 21/07/14	SD 21/07/14	Approved For Construction 21/07/14
No.	Revision	By	Chk	Appd	Date	Drawn	Date	Date



Project SH1 MACKAYS TO PEKA PEKA EXPRESSWAY
RP 1012/0.00 TO 1023/5.00

Title: SSMP 4 [410-420] - SHEET 5
BRIDGE MASTERPLAN

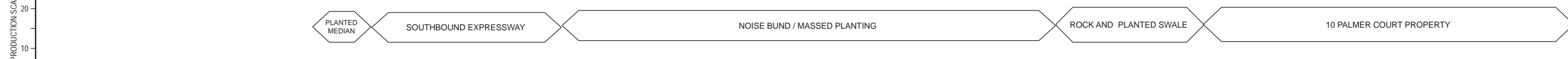
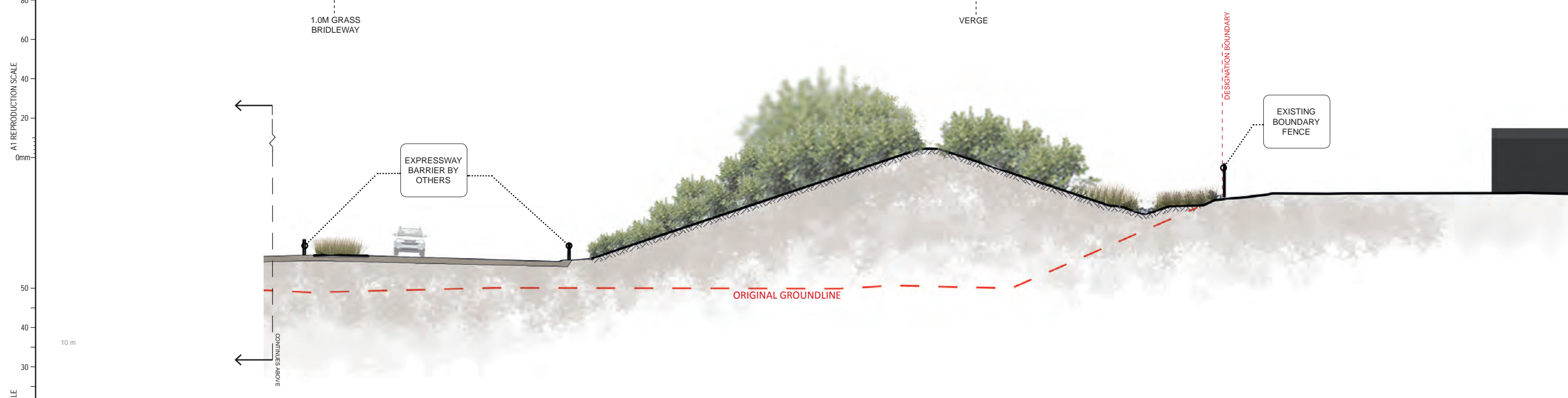
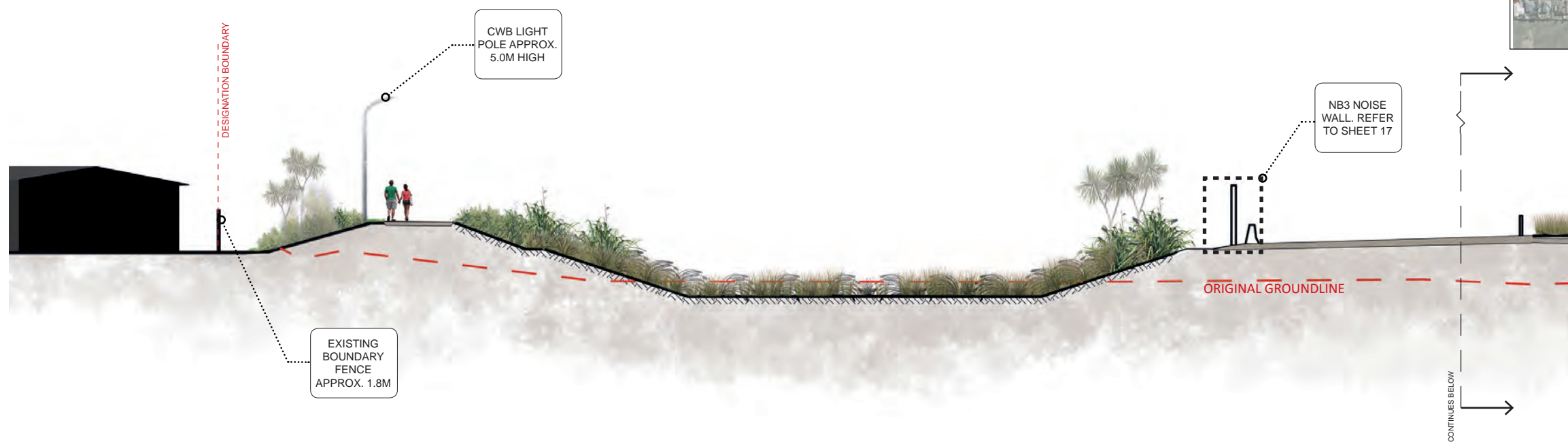
Drawing No. M2PP-121-D-DWG-8302
Rev. C

DETAIL DESIGN (DET)

CS1 - CROSS SECTION THROUGH CH 7580

FACING NORTH - SCALE - 1:250@A3

SSMP LOCATION MAP-M2PP-121-D-GPH-8102



A1 REPRODUCTION SCALE

A3 REPRODUCTION SCALE

No.	Revision	By	Chk	Chk.V	Appd	Date
C	CERTIFIED ISSUE - REV C	VB		DC		21.07/14

Original Scale (A1)	Design	SD	21.07/14	Approved For Construction*
AS SHOWN	Drawn	VB	21.07/14	
Reduced Scale (A3)	Design Check			
AS SHOWN	* Refer to Revision 1 for Original Signature			



Project: SH1 MACKAYS TO PEKA PEKA EXPRESSWAY
RP 1012/0.00 TO 1023/5.00

Title: SSMP 4[410-420] - SHEET 6 SECTION

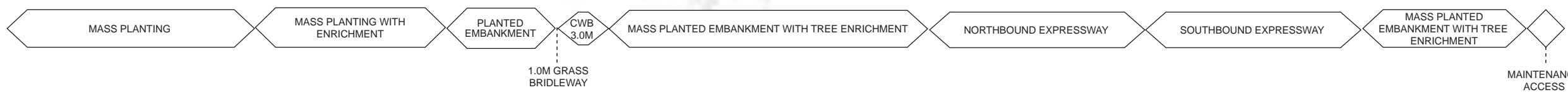
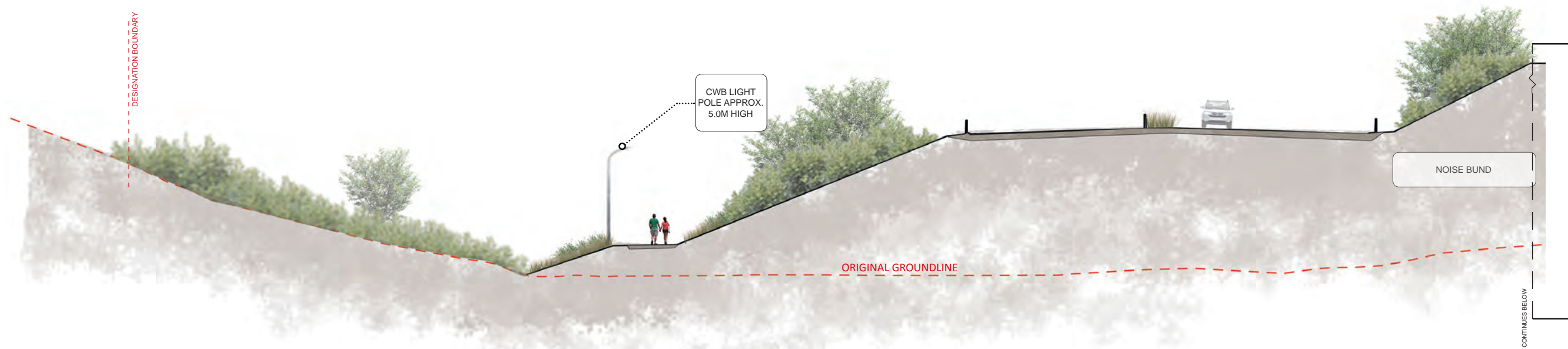
Drawing No: M2PP-121-D-DWG-8501

Rev: C

DETAIL DESIGN (DET)

CS2 - CROSS SECTION THROUGH CH 7800

FACING NORTH - SCALE - 1:250@A3



A1 REPRODUCTION SCALE
0mm

0mm

20

40

60

80

100

0mm

20

40

60

80

100

0mm

20

40

60

80

100

0mm

20

40

60

80

100

0mm

20

40

60

80

100

0mm

20

40

60

80

100

0mm

20

40

60

80

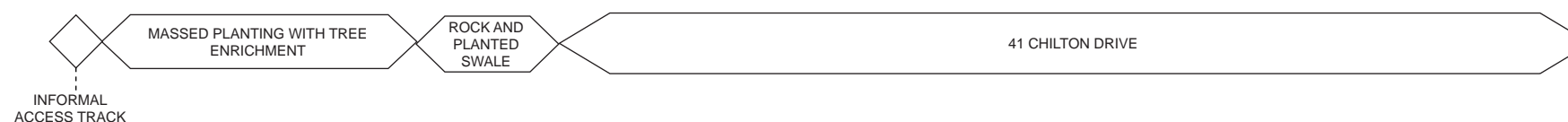
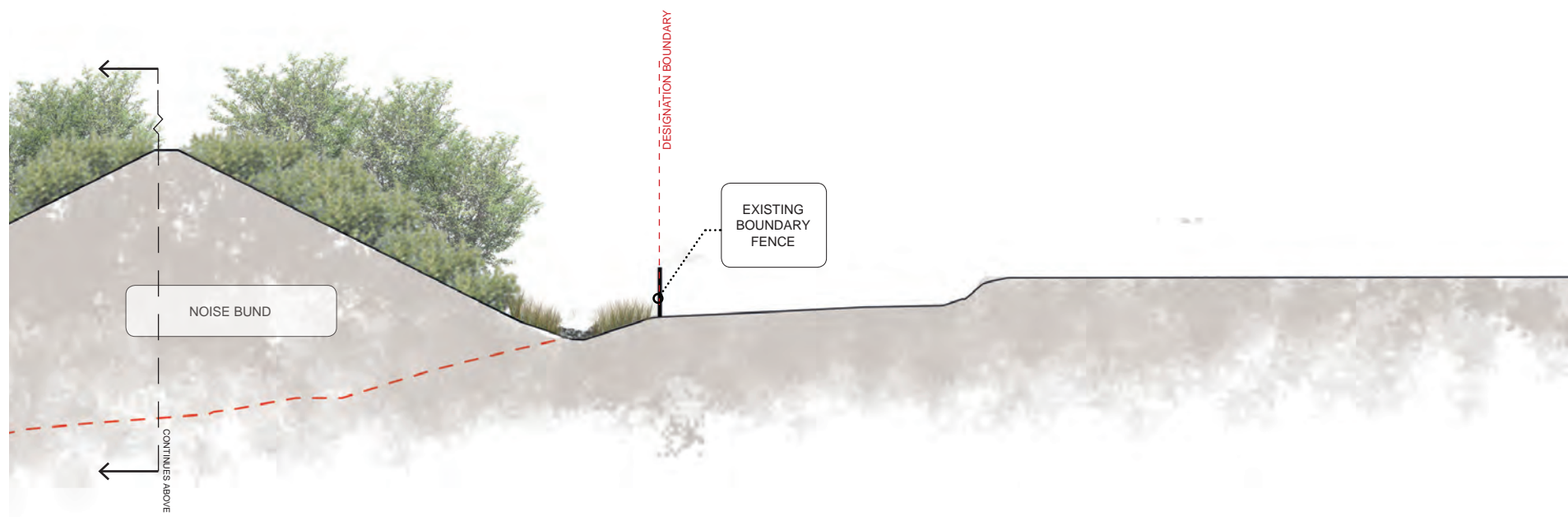
100

0mm

20

40

SSMP LOCATION MAP-M2PP-121-D-GPH-8102



No.	Revision	By	Chk	Chk.V	Appd	Date
C	CERTIFIED ISSUE - REV C	VB		DC		21.07/14

Original Scale (A1)	Design	SD	21.07/14	Approved For Construction?
AS SHOWN	Drawn	VB	21.07/14	
Reduced Scale (A3)	Design Check			Date
AS SHOWN				

Project: SH1 MACKAYS TO PEKA PEKA EXPRESSWAY
RP 1012/0.00 TO 1023/5.00

Title: SSMP 4[410-420] - SHEET 7 SECTION

Drawing No: M2PP-121-D-DWG-8502

Rev: C

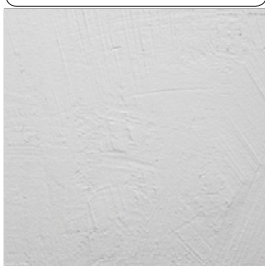
DETAIL DESIGN (DET)

Document No.

CS3 - CROSS SECTIONAL ELEVATION- MAZENGARB BRIDGE

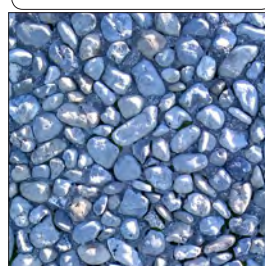
FACING WEST SCALE - 1:200@A3

MATERIAL A



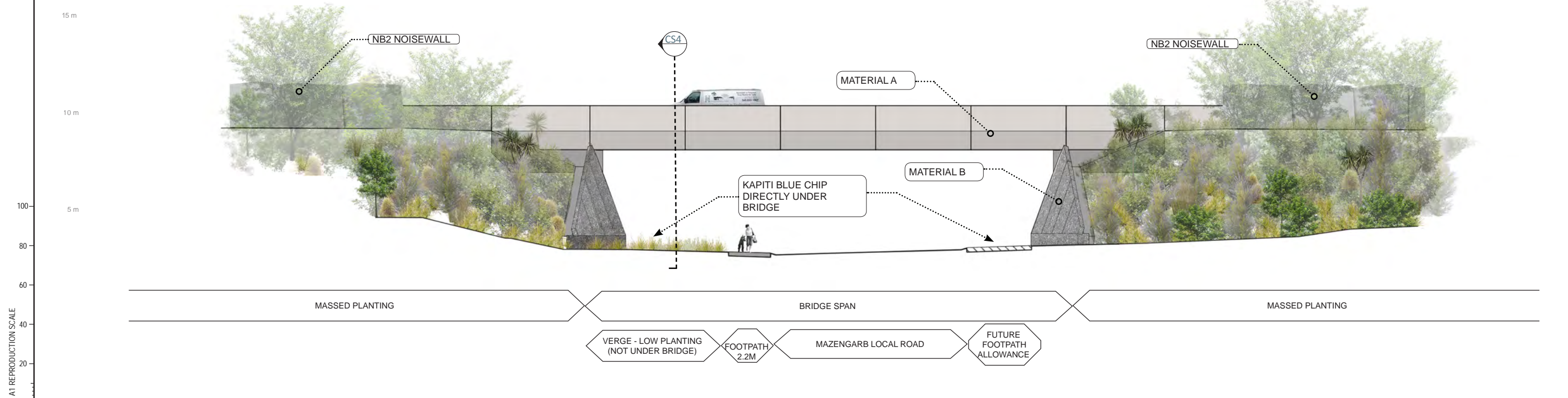
BRIDGE BARRIER:
PRECAST
CONCRETE WITH
2 COATS WHITE
KIEB COATING &
ANTI GRAFFITI
PROTECTION-
PENDING SAMPLE
PANEL APPROVAL

MATERIAL B



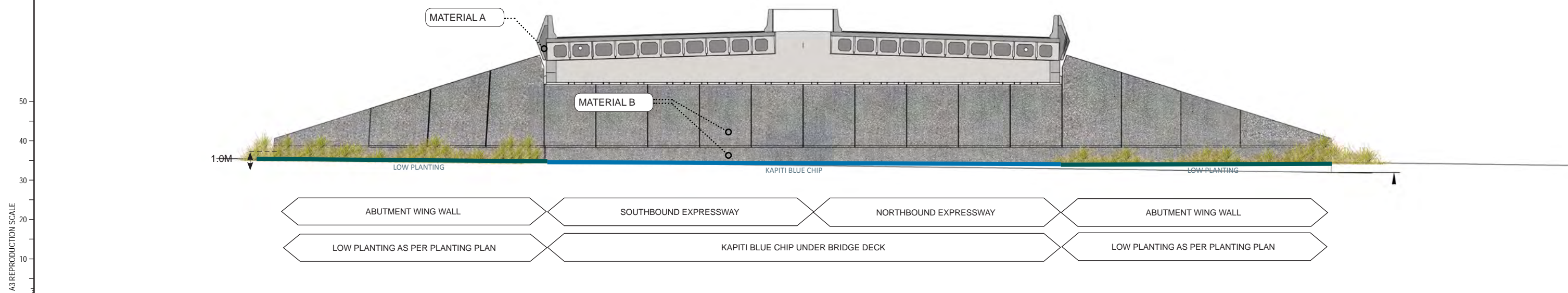
BRIDGE ABUTMENT:
PRECAST
CONCRETE PANEL
WITH INLAID OTAKI
PEB 40MM STONE
AND MATT GRAFFITI
PROTECTION-
PENDING SAMPLE
PANEL APPROVAL

SITE CONTEXT PLAN-M2PP-121-D-GPH-8301



CS4-CROSS SECTIONAL ELEVATION-ABUTMENT

FACING SOUTH SCALE - 1:200@A3



A1 REPRODUCTION SCALE

A3 REPRODUCTION SCALE

No.	Revision	By	Chk	Chk.V	Appd	Date
C	CERTIFIED ISSUE - REV C	VB		DC		21.07/14

Original Scale (A1)	Design Drawn	SD	21.07/14	Approved For Construction?
AS SHOWN	VB	VB	21.07/14	
Roadwork Scale (A3)	Dwg Verifier			Date
AS SHOWN	Dwg Check			

* Refer to Revision 1 for Original Signature

Project: SH1 MACKAYS TO PEKA PEKA EXPRESSWAY
RP 1012/0.00 TO 1023/5.00

Title: SSMP 4[410-420] - SHEET 8
BRIDGE ELEVATIONS

Drawing No: M2PP-121-D-DWG-8402

Rev: C

DETAIL DESIGN (DET)

VISUALISATION CONTEXT



VISUALISATION - MAZENGARB ROAD BRIDGE (WEST SIDE OF BRIDGE LOOKING EAST FROM MAZENGARB ROAD)

NOTE: GABIONS MARK LOCATION OF ACCESS TO CWB

A1 REPRODUCTION SCALE
0mm 20 40 60 80 100

A3 REPRODUCTION SCALE
0mm 10 20 30 40 50

No.	Revision	By	Chk	Chk.V	Appd	Date
C	CERTIFIED ISSUE - REV C	VB			DC	21.07/14

Original Scale (A1)	Design	SD	21.07/14	Approved For Construction*
AS SHOWN	Drawn	VB	21.07/14	
Ridroad Scale (A3)	Design Verifier			
AS SHOWN	Design Check			

* Refer to Revision 1 for Original Signature

Project: SH1 MACKAYS TO PEKA PEKA EXPRESSWAY
RP 1012/0.00 TO 1023/5.00

Title: SSMP 4[410-420] - SHEET 9
MAZENGARB ROAD

Drawing No: M2PP-121-D-DWG-8801
Rev: C

DETAIL DESIGN (DET)



PLAN OF NOISE WALL AND GABION WALL LOCATIONS

- NB1- TL4, F-SHAPE BARRIER
- NB2A- 2.0M HIGH, CONCRETE NOISE BARRIER, BACKFILLED ON OUTSIDE TO 1M ABOVE CARRIAGEWAY LEVEL
- NB2- 2.0M HIGH, CONCRETE NOISE BARRIER, BESIDE EXPRESSWAY
- NB2A- 2.0M HIGH, CONCRETE, NOISE BARRIER, BESIDE EXPRESSWAY BACKFILLED ON OUTSIDE TO 1.0M ABOVE CARRIAGEWAY LEVEL
- NB3- 2.5M HIGH CONCRETE NOISE BARRIER BESIDE EXPRESSWAY
- NB4- 3.0M HIGH CONCRETE NOISE BARRIER BESIDE EXPRESSWAY
- NB5- 2.0M HIGH CONCRETE NOISE BARRIER AWAY FROM EXPRESSWAY
- NB6- 3M HIGH CONCRETE NOISE BARRIER AWAY FROM EXPRESSWAY
- NB7- 2.0M HIGH TIMBER PROPERTY NOISE FENCE
- EARTH NOISE BUND (TOP) HEIGHT VARIES



A1 REPRODUCTION SCALE
0mm
10
20
30
40
50
60
80
100

DETAIL DESIGN (DET)

No.	Revision	By	Chk	Chk.V	Appd	Date
C	CERTIFIED ISSUE - REV C	VB		DC		21/07/14

Original Scale (A1)	Design	SD	21/07/14	Approved For Construction*
1:1000	Drawn	VB	21/07/14	Date
Reduced Scale (A3)	Design Check			
1:2000	* Refer to Revision 1 for Original Signature			



Project: SH1 MACKAYS TO PEKA PEKA EXPRESSWAY
RP 1012/0.00 TO 1023/5.00

Title: SSMP4 - SHEET 10
NOISE WALL LOCATIONS

Drawing No: M2PP-121-D-DWG-8601

Rev: C



PLAN OF NOISE WALL AND GABION WALL LOCATIONS

- NB1- TL4, F-SHAPE BARRIER
- NB2A- 2.0M HIGH, CONCRETE NOISE BARRIER, BACKFILLED ON OUTSIDE TO 1M ABOVE CARRIAGEWAY LEVEL
- NB2- 2.0M HIGH, CONCRETE NOISE BARRIER, BESIDE EXPRESSWAY
- NB2A- 2.0M HIGH, CONCRETE, NOISE BARRIER, BESIDE EXPRESSWAY BACKFILLED ON OUTSIDE TO 1.0M ABOVE CARRIAGEWAY LEVEL
- NB3- 2.5M HIGH CONCRETE NOISE BARRIER BESIDE EXPRESSWAY
- NB4- 3.0M HIGH CONCRETE NOISE BARRIER BESIDE EXPRESSWAY
- NB5- 2.0M HIGH CONCRETE NOISE BARRIER AWAY FROM EXPRESSWAY
- NB6- 3M HIGH CONCRETE NOISE BARRIER AWAY FROM EXPRESSWAY
- NB7- 2.0M HIGH TIMBER PROPERTY NOISE FENCE
- EARTH NOISE BUND (TOP) HEIGHT VARIES



A1 REPRODUCTION SCALE
0mm
20
40
60
80
100

A3 REPRODUCTION SCALE
0mm
10
20
30
40
50

DETAIL DESIGN (DET)

No.	Revision	By	Chk	Chk.V	Appd	Date
C	CERTIFIED ISSUE - REV C	VB		DC		21/07/14

Original Scale (A1)	Design	SD	21/07/14	Approved For Construction*
1:1000	Drawn	VB	21/07/14	Date
Reduced Scale (A3)	Design Verifier			
1:2000	Design Check			

* Refer to Revision 1 for Original Signature



MacKays to Peka Peka
Wellington Northern Corridor

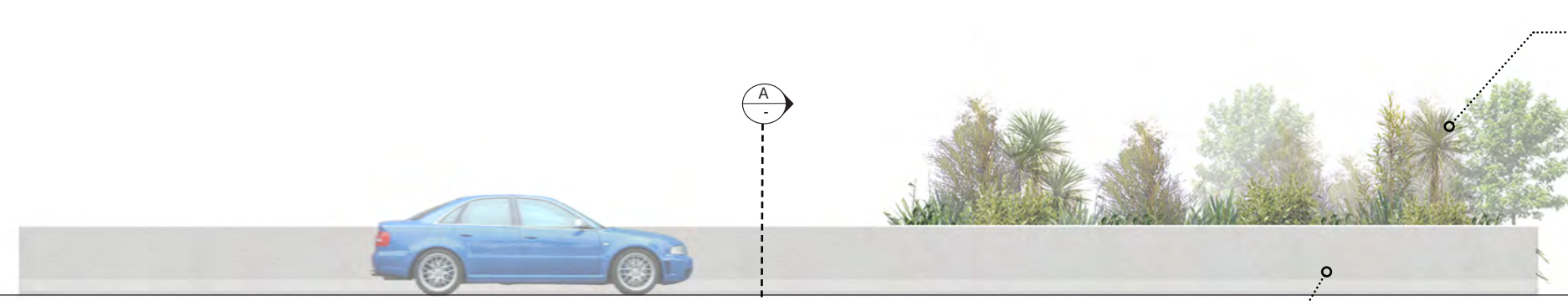
Project: SH1 MACKAYS TO PEKA PEKA EXPRESSWAY
RP 1012/0.00 TO 1023/5.00

Title: SSMP4 - SHEET 11
NOISE WALL LOCATIONS

Drawing No: M2PP-121-D-DWG-8602

Rev: C

ELEVATION 1 - NOISE WALL NB1(TL4)- EXPRESSWAY SIDE

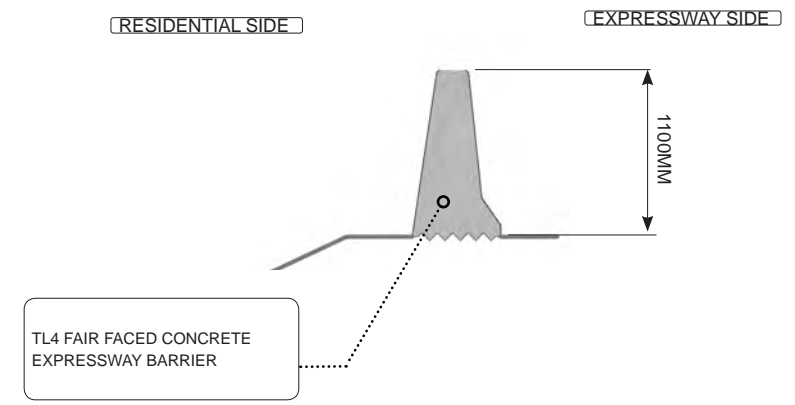


ELEVATION 2 - NOISE WALL NB1 (TL4)- RESIDENTIAL SIDE



SECTION A - NOISE WALL NB1 (TL4)

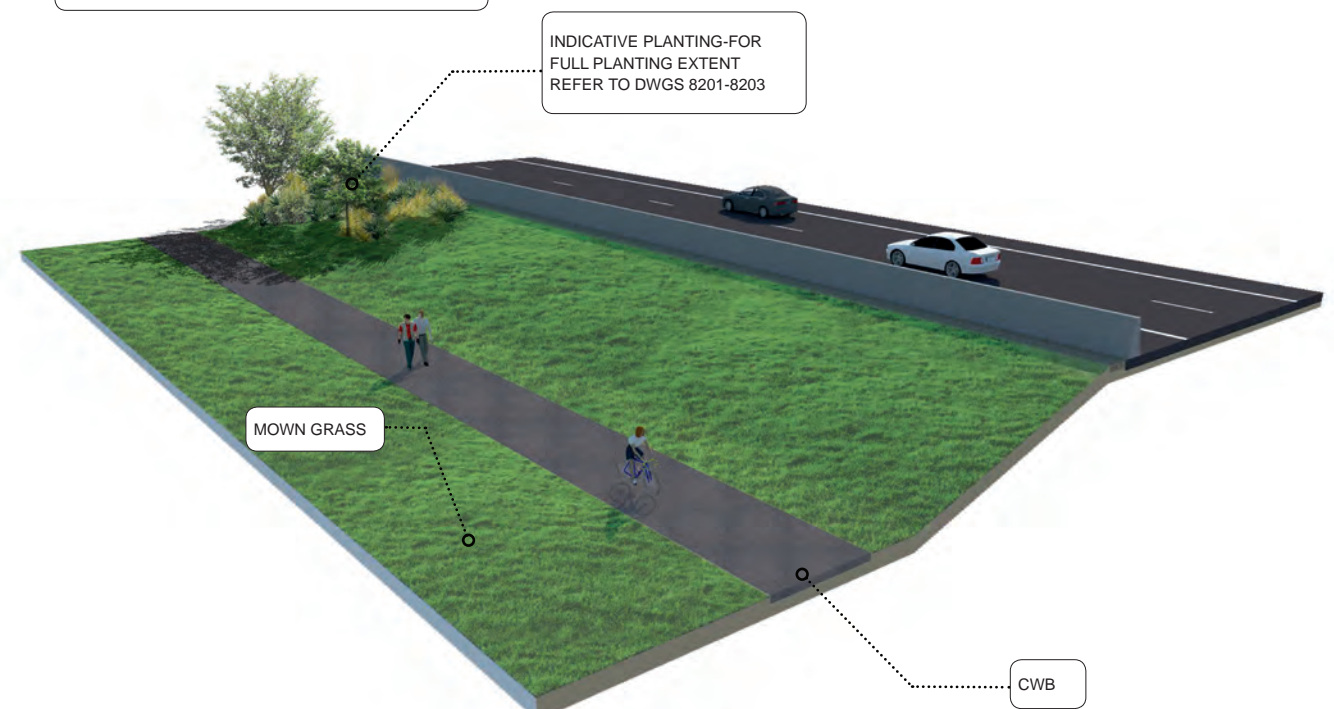
SCALE - 1:25@A3



VISUALISATION EXPRESSWAY SIDE



VISUALISATION RESIDENTIAL SIDE



A1 REPRODUCTION SCALE
0mm
20
40
60
80
100

A3 REPRODUCTION SCALE
0mm
10
20
30
40
50

No.	Revision	By	Chk	Chk.V	Appd	Date
	CERTIFIED ISSUE - REV C	VB		DC		21.07/14

Original Scale (A1)	Design	SD	21.07/14	Approved For Construction?
AS SHOWN	Drawn	VB	21.07/14	
Reduced Scale (A3)	Design Verifier			Date
AS SHOWN	Design Check			

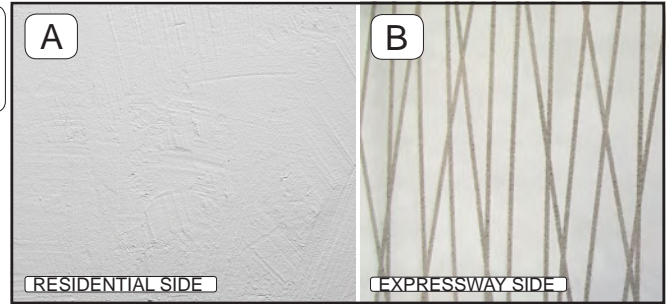
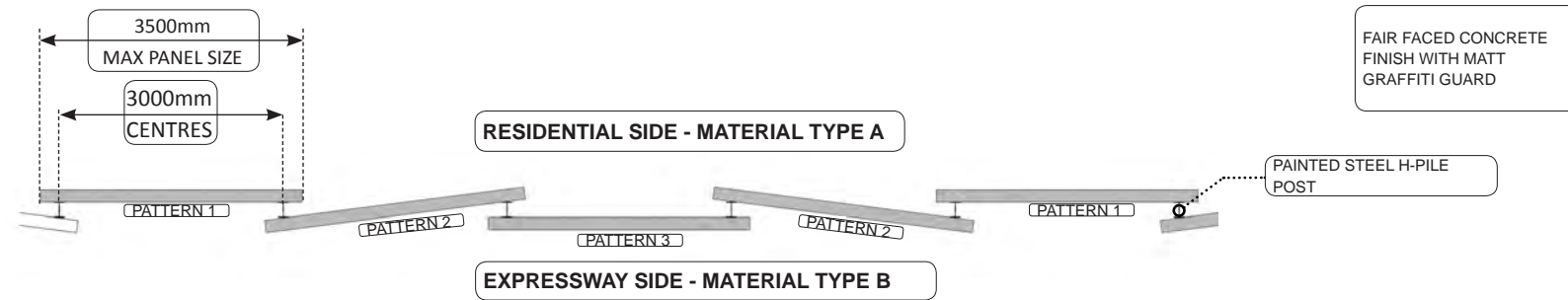
* Refer to Revision 1 for Original Signature

Project: SH1 MACKAYS TO PEKA PEKA EXPRESSWAY
RP 1012/0.00 TO 1023/5.00

Title: SHEET 12
NOISE WALL NB1

Drawing No: M2PP-121-D-DWG-8603

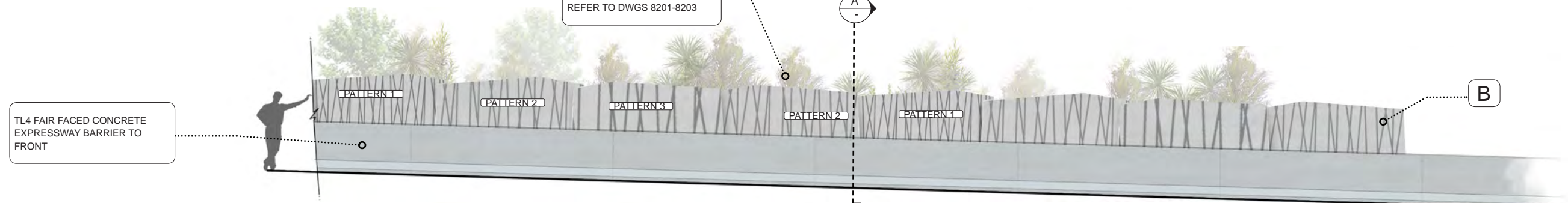
Rev: B



- FAIR FACED CONCRETE WITH EXPOSED CONCRETE PATTERN.
- CONCRETE PATTERN: VERTEX BY GRAPHIC CONCRETE
- 3 PATTERN SIZES:
 - PATTERN 1: SMALL
 - PATTERN 2: MEDIUM
 - PATTERN 3: LARGE

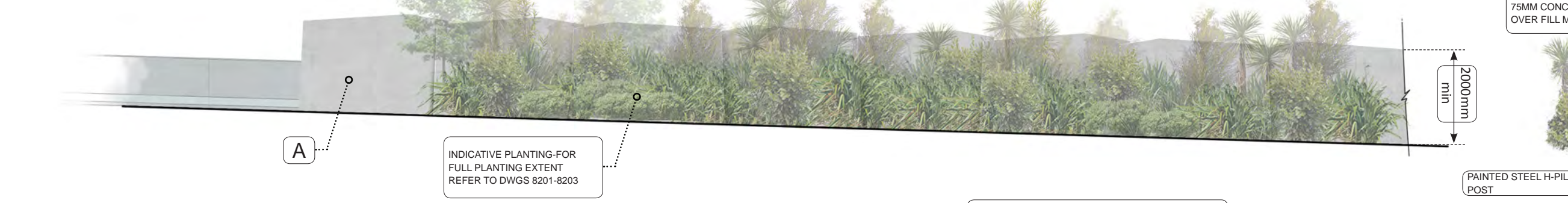
ELEVATION 1 - NOISE WALL NB2 - EXPRESSWAY SIDE

SCALE 1:100 @ A3

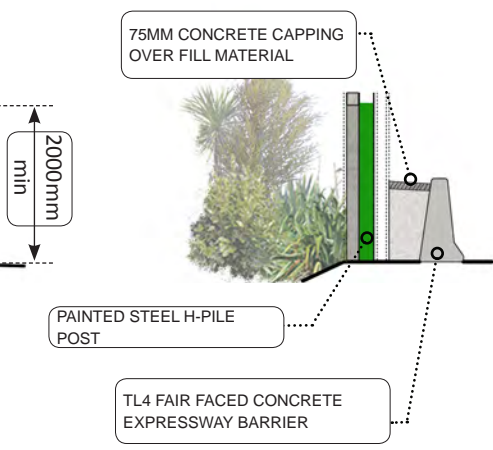


ELEVATION 2 - NOISE WALL NB2 - RESIDENTIAL SIDE

SCALE 1:100 @ A3



SECTION A - NOISE WALL NB2 - 2M



VISUALISATION-RESIDENTIAL SIDE

VISUALISATION-EXPRESSWAY SIDE

A1 REPRODUCTION SCALE

A3 REPRODUCTION SCALE



No.	Revision	By	Chk	Chk.V	Appd	Date
C	CERTIFIED ISSUE - REV C	VB		DC		21.07/14

Original Scale (A1)	Design	SD	21.07/14	Approved For Construction?
AS SHOWN	Drawn	VB	21.07/14	Date
Reduced Scale (A3)	Design Verifier			
AS SHOWN	Design Check			

* Refer to Revision 1 for Original Signature

NZ TRANSPORT AGENCY
WAKA KOTAHI

MacKays to Peka Peka
Wellington Northern Corridor

Project: SH1 MACKAYS TO PEKA PEKA EXPRESSWAY
RP 1012/0.00 TO 1023/5.00

Title: SHEET 13
NOISE WALL NB2 - 2M

Drawing No: M2PP-121-D-DWG-8604

Rev: C

DETAIL DESIGN (DET)

Document No.