

M2PP-121-D-PLNM-0003

Appendix 1: DRAWING SET

Site Specific Management Plan 003 - [sectors 360/370/380]  
MacKays to Peka Peka Expressway

01 SEPTEMBER 2014 - CERTIFIED ISSUE - REV C



SSMP#	SECTOR	NAME	NOTES
SSMP1	320	[RAUMATI SOUTH]	
SSMP2	330/340/350	[RAUMATI NORTH]	
SSMP3	360/370/380	[WHAREMAUKU BASIN]	
SSMP4	410/420	[KAPITI MAZENGARB]	
SSMP5&6	430/440/460	[OTAIHANGA NORTH&SOUTH]	
SSMP7	470	[WAIKANA E RIVER]	
SSMP8	480/510	[TE MOANA]	
SSMP9	520	[NGARARA]	
SSMP10	530/540/550/580	PEKA PEKA SOUTH	ISSUED IN TWO PARTS: -SSMP10-550 -SSMP10-580/540/530
SSMP11	560/570	[[PEKA PEKA NORTH]	



**LEGEND**

	ROAD		SSMP SHEET (ROAD)		SSMP SHEET (BRIDGE)		PARCEL BOUNDARIES
	SSMP BOUNDARY		CURRENT SSMP SHEET (ROAD)		CURRENT SSMP SHEET (BRIDGE)		CONSTRUCTION BOUNDARY

A1 REPRODUCTION SCALE  
0mm

A3 REPRODUCTION SCALE  
0mm

No.	Revision	By	Chk	Chk.V	Appd	Date
C	CERTIFIED ISSUE - REV C	VB		DS		18/07/14

Original Scale (A1)	Design	FB	18/07/14	Approved For Construction*
1:25,000	Drawn	VB	18/07/14	
Reduced Scale (A3)	Design Verifier			Date
1:50,000	Design Check			

Project	SH1 MACKAYS TO PEKA PEKA EXPRESSWAY RP 1012/0.00 TO 1023/5.00
---------	--

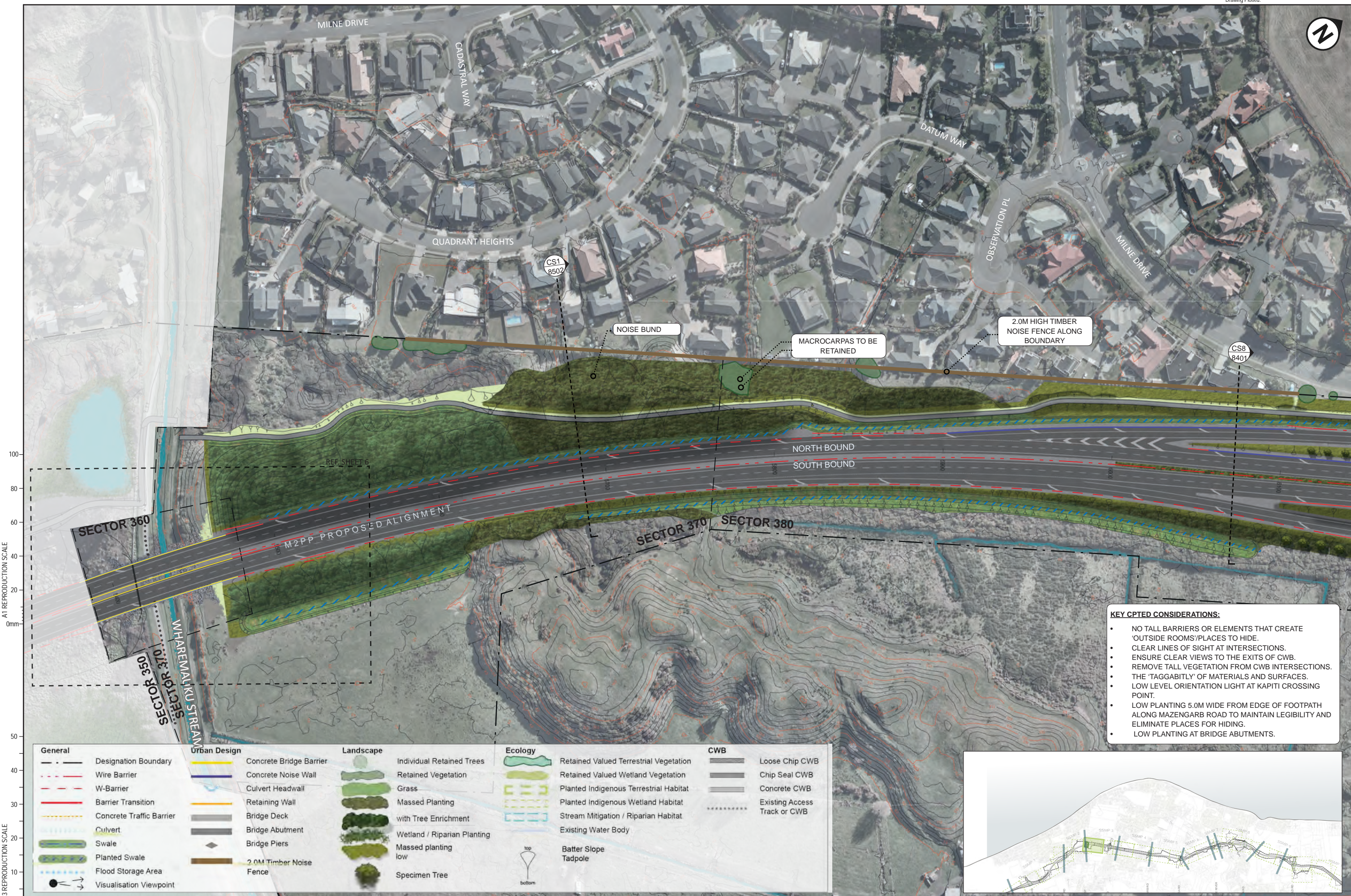
Title	SSMP 3 [350/370/380] - SHEET 1 LOCATION PLAN
-------	---

Drawing No.	M2PP-121-D-DWG-8001
Rev.	C

DETAIL DESIGN (DET)

Document No.





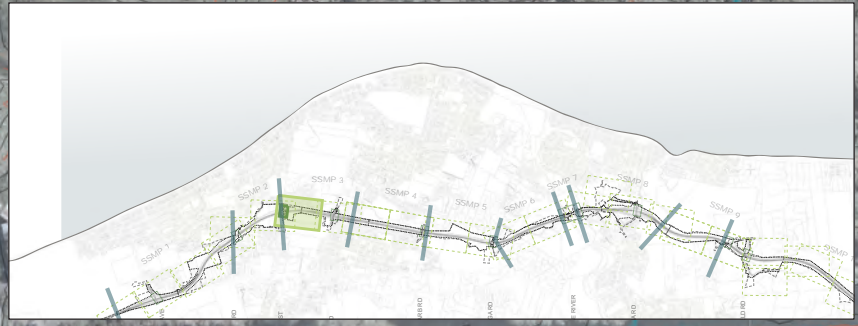
A1 REPRODUCTION SCALE

A3 REPRODUCTION SCALE

DETAIL DESIGN (DET)

- KEY CPTD CONSIDERATIONS:**
- NO TALL BARRIERS OR ELEMENTS THAT CREATE 'OUTSIDE ROOMS'/PLACES TO HIDE.
  - CLEAR LINES OF SIGHT AT INTERSECTIONS.
  - ENSURE CLEAR VIEWS TO THE EXITS OF CWB.
  - REMOVE TALL VEGETATION FROM CWB INTERSECTIONS.
  - THE 'TAGGABILITY' OF MATERIALS AND SURFACES.
  - LOW LEVEL ORIENTATION LIGHT AT KAPITI CROSSING POINT.
  - LOW PLANTING 5.0M WIDE FROM EDGE OF FOOTPATH ALONG MAZENGARB ROAD TO MAINTAIN LEGIBILITY AND ELIMINATE PLACES FOR HIDING.
  - LOW PLANTING AT BRIDGE ABUTMENTS.

General	Urban Design	Landscape	Ecology	CWB
--- Designation Boundary	Concrete Bridge Barrier	Individual Retained Trees	Retained Valued Terrestrial Vegetation	Loose Chip CWB
--- Wire Barrier	Concrete Noise Wall	Retained Vegetation	Retained Valued Wetland Vegetation	Chip Seal CWB
--- W-Barrier	Culvert Headwall	Grass	Planted Indigenous Terrestrial Habitat	Concrete CWB
--- Barrier Transition	Retaining Wall	Massed Planting	Planted Indigenous Wetland Habitat	Existing Access Track or CWB
--- Concrete Traffic Barrier	Bridge Deck	with Tree Enrichment	Stream Mitigation / Riparian Habitat	
--- Culvert	Bridge Abutment	Wetland / Riparian Planting	Existing Water Body	
--- Swale	Bridge Piers	Massed planting low	Batter Slope	
--- Planted Swale	2.0M Timber Noise Fence	Specimen Tree	Tadpole	
--- Flood Storage Area				
--- Visualisation Viewpoint				



No.	Revision	By	Chk	Chk.V	Appd	Date
C	CERTIFIED ISSUE - REV C	VB		DS		18/07/14

Original Scale (A1)	Design	FB	18/07/14	Approved For Construction?
1:1000	Drawn	VB		
Reduced Scale (A3)	Design	Chk	18/07/14	Date
1:2000	Checked			



Project: SH1 MACKAYS TO PEKA PEKA EXPRESSWAY  
RP 1012/0.00 TO 1023/5.00

Title: SSMP 3 [350/370/380] - SHEET 2  
MASTER PLAN

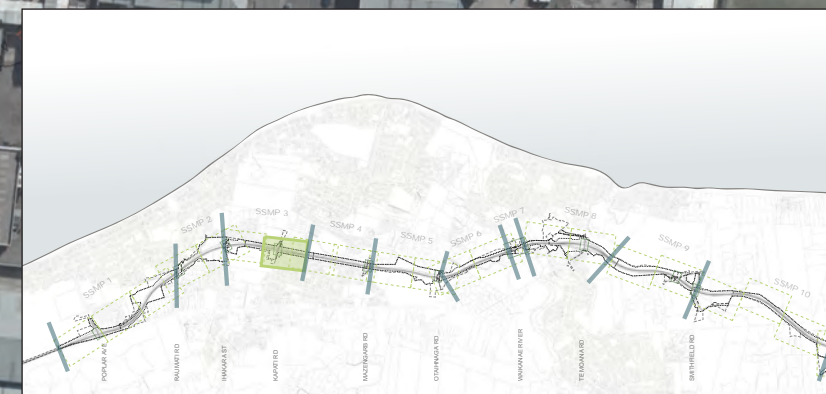
Drawing No: M2PP-121-D-DWG-8101

Rev: C



**KEY CPTED CONSIDERATIONS:**

- NO TALL BARRIERS OR ELEMENTS THAT CREATE 'OUTSIDE ROOMS'/PLACES TO HIDE.
- CLEAR LINES OF SIGHT AT INTERSECTIONS.
- ENSURE CLEAR VIEWS TO THE EXITS OF CWB.
- REMOVE TALL VEGETATION FROM CWB INTERSECTIONS.
- THE 'TAGGABILITY' OF MATERIALS AND SURFACES.
- LOW LEVEL ORIENTATION LIGHT AT KAPITI CROSSING POINT.
- LOW PLANTING 5.0M WIDE FROM EDGE OF FOOTPATH ALONG MAZENGARB ROAD TO MAINTAIN LEGIBILITY AND ELIMINATE PLACES FOR HIDING.
- LOW PLANTING AT BRIDGE ABUTMENTS.



A1 REPRODUCTION SCALE  
0mm

A3 REPRODUCTION SCALE  
0mm

General	Urban Design	Landscape	Ecology	CWB
Designation Boundary	Concrete Bridge Barrier	Individual Retained Trees	Retained Valued Terrestrial Vegetation	Loose Chip CWB
Wire Barrier	Concrete Noise Wall	Retained Vegetation	Retained Valued Wetland Vegetation	Chip Seal CWB
W-Barrier	Culvert Headwall	Grass	Planted Indigenous Terrestrial Habitat	Concrete CWB
Barrier Transition	Retaining Wall	Massed Planting	Planted Indigenous Wetland Habitat	Existing Access Track or CWB
Concrete Traffic Barrier	Bridge Deck	with Tree Enrichment	Stream Mitigation / Riparian Habitat	
Culvert	Bridge Abutment	Wetland / Riparian Planting	Existing Water Body	
Swale	Bridge Piers	Massed planting low	Batter Slope	
Planted Swale	2.0M Timber Noise Fence	Specimen Tree	Tadpole	
Flood Storage Area				
Visualisation Viewpoint				

No.	Revision	By	Chk	Chk.V	Appd	Date
C	CERTIFIED ISSUE - REV C	VB		DS		18/07/14

Original Scale (A1)	Design	FB	18/07/14	Approved For Construction
1:1000	Drawn	VB	18/07/14	
Reduced Scale (A3)	Design Check			Date
1:2000				



Project SH1 MACKAYS TO PEKA PEKA EXPRESSWAY  
RP 1012/0.00 TO 1023/5.00

Title: SSMP 3 [350/370/380] - SHEET 3  
MASTER PLAN

Drawing No: M2PP-121-D-DWG-8102  
Rev: C

DETAIL DESIGN (DET)

Document No.

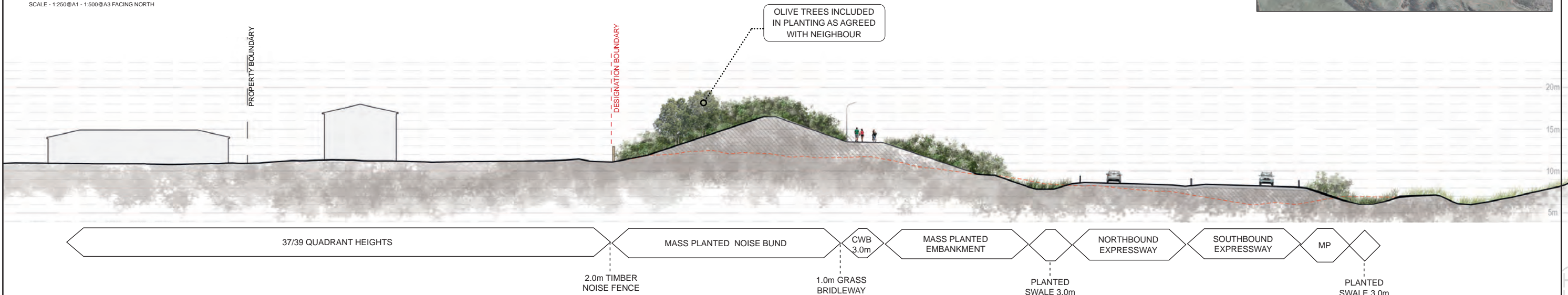


SITE CONTEXT PLAN-M2PP-121-D-GPH-8101



**CS1 - CROSS SECTION-NOISE BUND**

SCALE - 1:250@A1 - 1:500@A3 FACING NORTH



SITE CONTEXT PLAN-M2PP-121-D-GPH-8102

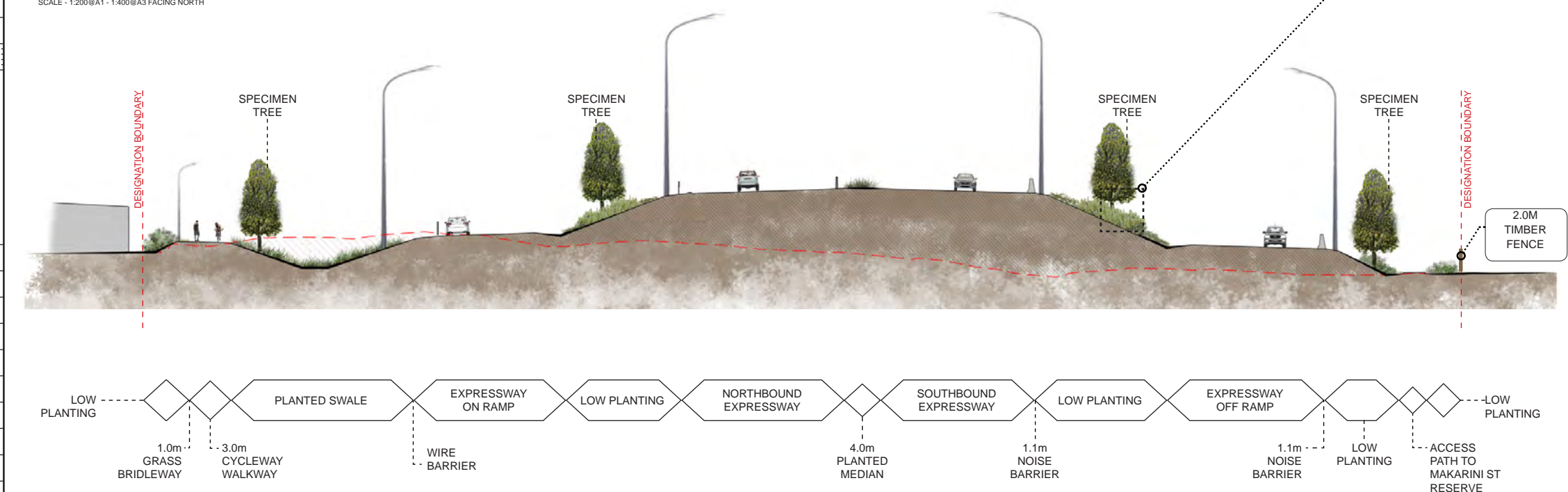


**CS2 - CROSS SECTION-EXPRESSWAY NORTH OF KAPITI ROAD**

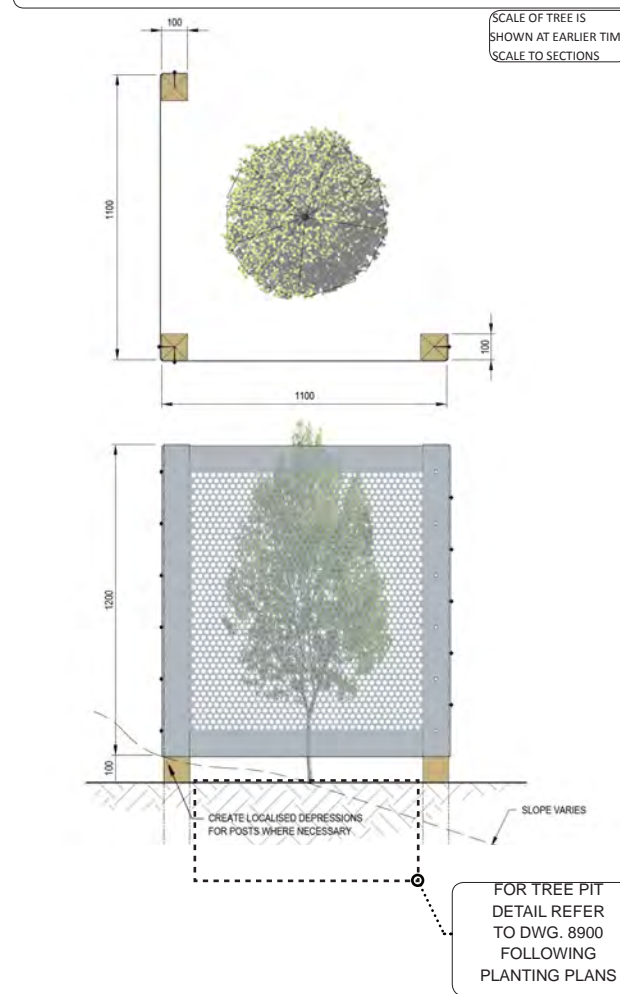
SCALE - 1:200@A1 - 1:400@A3 FACING NORTH

A1 REPRODUCTION SCALE

A3 REPRODUCTION SCALE



**TREE WIND SHELTER DETAIL**



No.	Revision	By	Chk	Chk.V	Appd	Date
C	CERTIFIED ISSUE - REV C	VB		DS		18/07/14

Original Scale (A1)	Design	FB	18/07/14	Approved For Construction?
AS SHOWN	Drawn	VB	18/07/14	Date
Reduced Scale (A3)	Design Check			
AS SHOWN	* Refer to Revision 1 for Original Signature			

**NZ TRANSPORT AGENCY** WAKA KOTAHI

**MacKays to Peka Peka**  
Wellington Northern Corridor

Project: SH1 MACKAYS TO PEKA PEKA EXPRESSWAY  
RP 1012/0.00 TO 1023/5.00

Title: SSMP3[360/370/380] SHEET 4  
CROSS SECTIONS

Drawing No: M2PP-121-D-DWG-8502  
Rev: C

DETAIL DESIGN (DET)



**CS3 - CROSS SECTION- WETLAND 4**

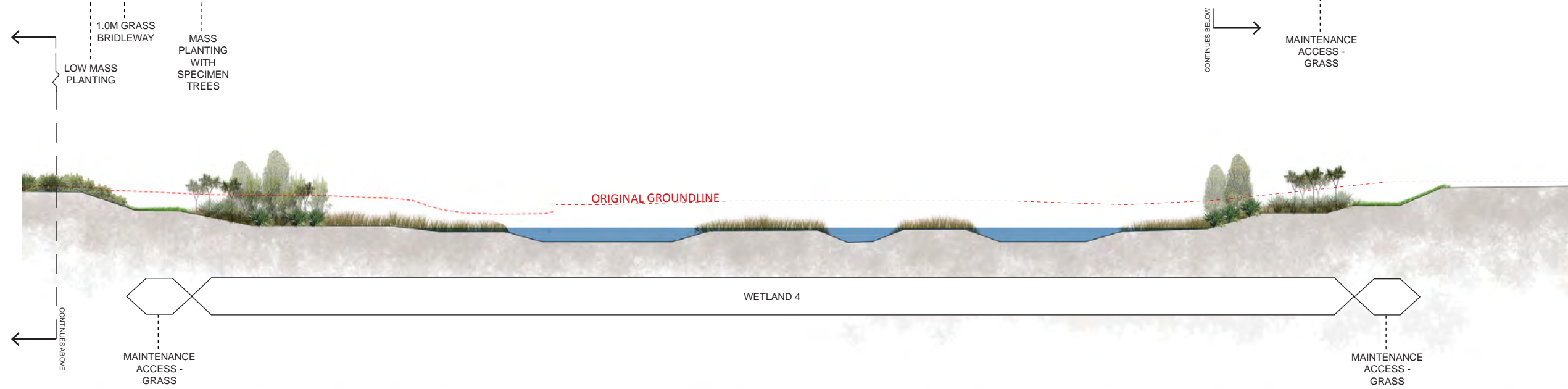
FACING WEST SCALE - 1:200@A1 1:400@A3

**SITE CONTEXT PLAN-M2PP-121-D-GPH-8301**



A1 REPRODUCTION SCALE

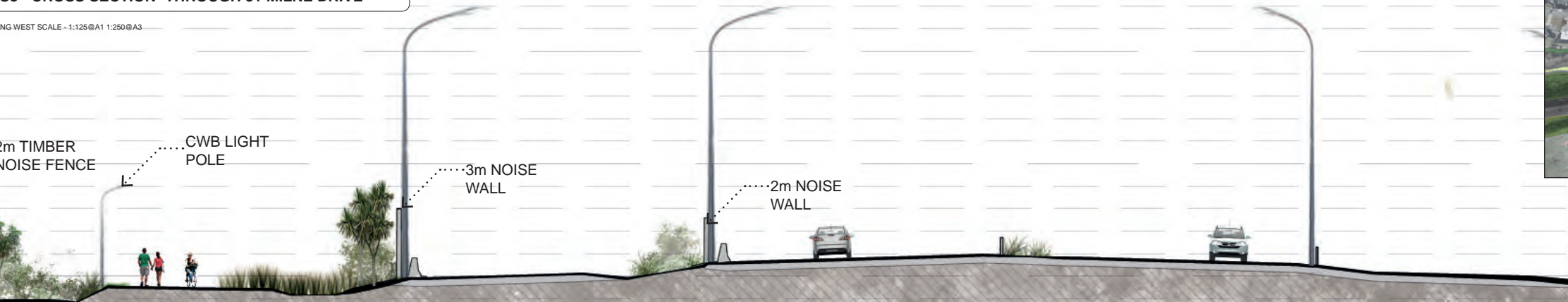
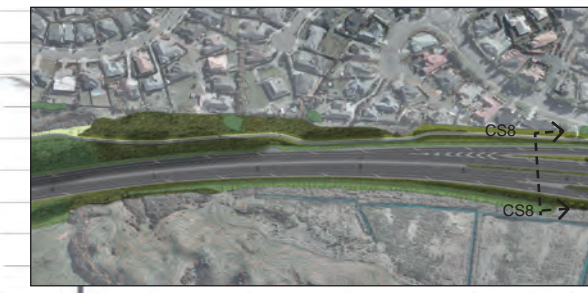
15 m  
100  
10 m  
80  
60  
5 m  
40  
20  
0mm



**CS8 - CROSS SECTION- THROUGH 51 MILNE DRIVE**

FACING WEST SCALE - 1:125@A1 1:250@A3

**SITE CONTEXT PLAN-M2PP-121-D-GPH-8101**



A3 REPRODUCTION SCALE

50  
40  
30  
20  
10  
0mm

DETAIL DESIGN (DET)

No.	Revision	By	Chk	Chk.V	Appd	Date
C	CERTIFIED ISSUE - REV C	VB		DS		18/07/14

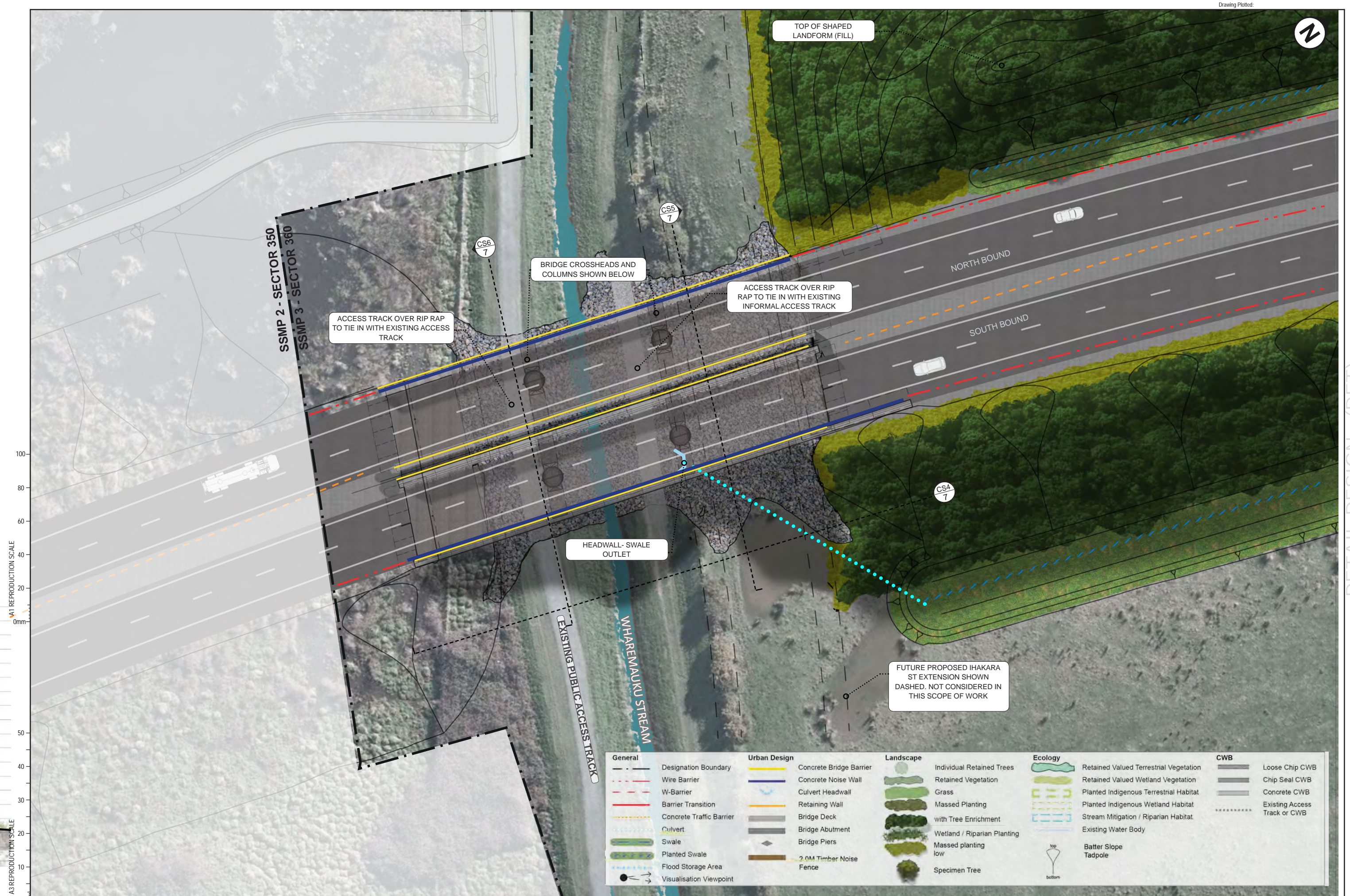
Original Scale (A1)	Design	FB	18/07/14	Approved For Construction?
AS SHOWN	Drawn	VB	18/07/14	Date
Ridiculous Scale (A3)	Design Verifier			
AS SHOWN	Design Check			

Project: SH1 MACKAYS TO PEKA PEKA EXPRESSWAY  
RP 1012/0.00 TO 1023/5.00

Title: SSMP 3[350/370/380] - SHEET 5  
WETLAND LONG SECTION

Drawing No: M2PP-121-D-DWG-8401  
Rev: C





A1 REPRODUCTION SCALE  
0mm  
20  
40  
60  
80  
100

A3 REPRODUCTION SCALE  
0mm  
10  
20  
30  
40

General	Urban Design	Landscape	Ecology	CWB
--- Designation Boundary	Concrete Bridge Barrier	Individual Retained Trees	Retained Valued Terrestrial Vegetation	Loose Chip CWB
- - - Wire Barrier	Concrete Noise Wall	Retained Vegetation	Retained Valued Wetland Vegetation	Chip Seal CWB
- - - W-Barrier	Culvert Headwall	Grass	Planted Indigenous Terrestrial Habitat	Concrete CWB
- - - Barrier Transition	Retaining Wall	Massed Planting	Planted Indigenous Wetland Habitat	Existing Access Track or CWB
- - - Concrete Traffic Barrier	Bridge Deck	with Tree Enrichment	Stream Mitigation / Riparian Habitat	
--- Culvert	Bridge Abutment	Wetland / Riparian Planting	Existing Water Body	
--- Swale	Bridge Piers	Massed planting low		
--- Planted Swale	2.0M Timber Noise Fence	Specimen Tree		
--- Flood Storage Area				
● Visualisation Viewpoint				

C	CERTIFIED ISSUE - REV C	VB	DS	18/07/14
No.	Revision	By	Chk	Date

Original Scale (A1)	Design	FB	18/07/14	Approved For Construction
1:250	Drawn	VB	18/07/14	
Reduced Scale (A3)	Design Verifier			
1:500	Design Check			
	Date			

**NZ TRANSPORT AGENCY**  
WAKA KOTAHĪ

**MacKays to Peka Peka**  
Wellington Northern Corridor

Project: SH1 MACKAYS TO PEKA PEKA EXPRESSWAY  
RP 1012/0.00 TO 1023/5.00

Title: SSMP 3 [350/370/380] - SHEET 6  
WHAREMAUKU BRIDGE

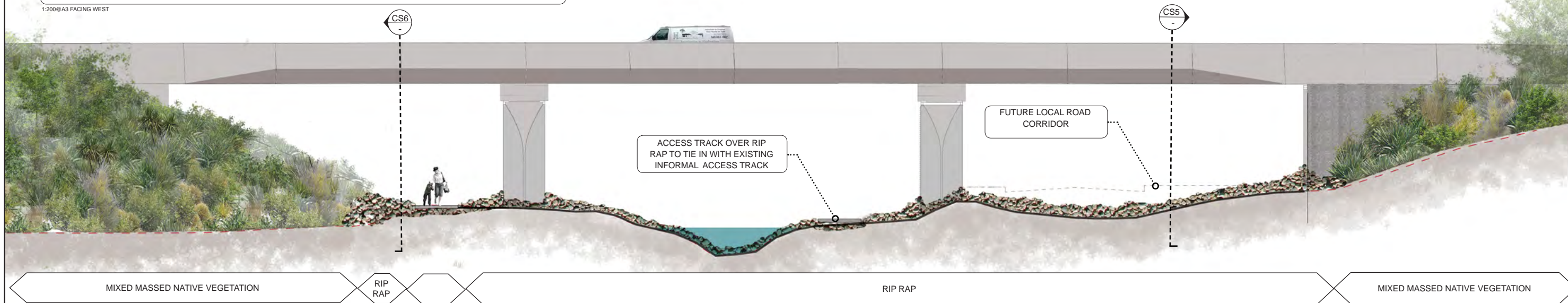
Drawing No: M2PP-121-D-DWG-8401  
Rev: C

DETAIL DESIGN (DET)



**CS4 - CROSS SECTIONAL ELEVATION - WHAREMAUKU STREAM BRIDGE ABUTMENTS**

1:200@A3 FACING WEST



MIXED MASSED NATIVE VEGETATION

RIP RAP

RIP RAP

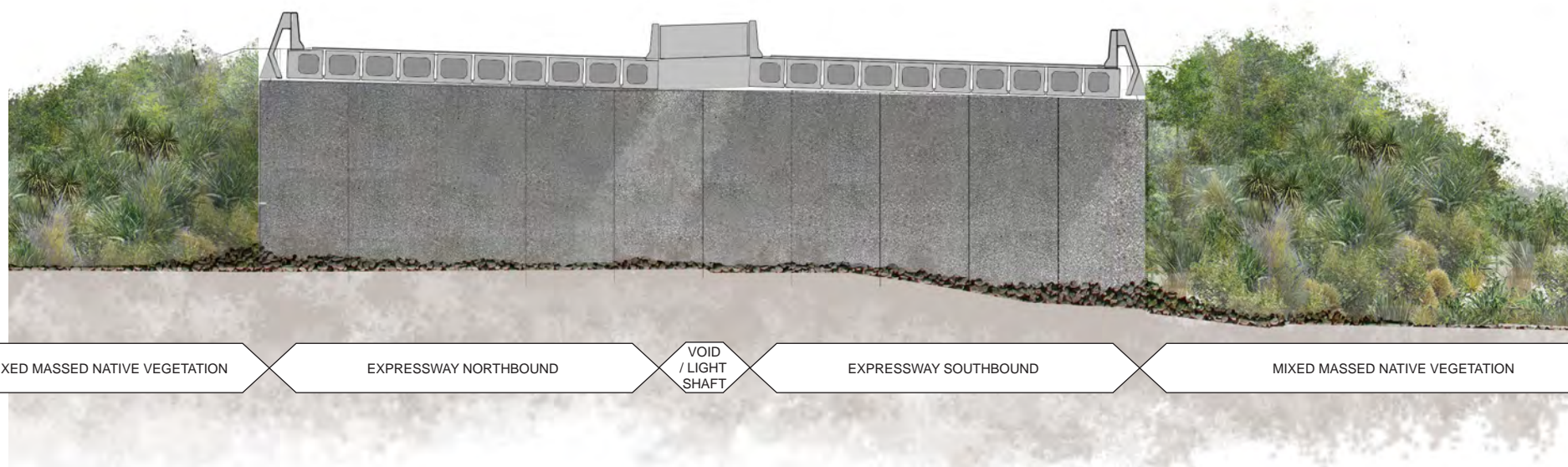
MIXED MASSED NATIVE VEGETATION

ACCESS TRACK OVER RIP RAP TO TIE IN WITH EXISTING ACCESS TRACK

WHAREMAUKU STREAM CORRIDOR

**CS5 - NORTH ABUTMENT**

1:200@A3 FACING NORTH



MIXED MASSED NATIVE VEGETATION

EXPRESSWAY NORTHBOUND

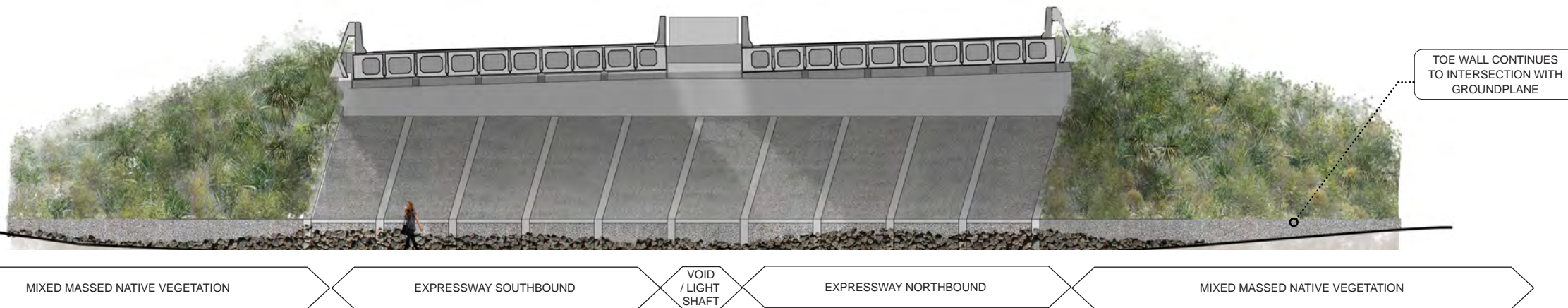
VOID / LIGHT SHAFT

EXPRESSWAY SOUTHBOUND

MIXED MASSED NATIVE VEGETATION

**CS6 - SOUTH ABUTMENT**

1:200@A3 FACING SOUTH



MIXED MASSED NATIVE VEGETATION

EXPRESSWAY SOUTHBOUND

VOID / LIGHT SHAFT

EXPRESSWAY NORTHBOUND

MIXED MASSED NATIVE VEGETATION

TOE WALL CONTINUES TO INTERSECTION WITH GROUNDPLANE

A1 REPRODUCTION SCALE

A3 REPRODUCTION SCALE

No.	Revision	By	Chk	Chk.V	Appd	Date
C	CERTIFIED ISSUE - REV C	VB		DS		18/07/14

Original Scale (A1)	Design	FB	18/07/14	Approved For Construction*
AS SHOWN	Drawn	VB	18/07/14	Date
Reduced Scale (A3)	Design Verifier			
AS SHOWN	Design Check			



**MacKays to Peka Peka**  
Wellington Northern Corridor

Project: SH1 MACKAYS TO PEKA PEKA EXPRESSWAY  
RP 1012/0.00 TO 1023/5.00

Title: SSMP 3[350/370/380] - SHEET 7 ROAD SECTIONS

Drawing No: M2PP-121-D-DWG-8501

Rev: C





A1 REPRODUCTION SCALE  
0mm

A3 REPRODUCTION SCALE  
0mm

**PROPOSED VISUALISATION - WHAREMAUKU STREAM BRIDGE (EAST SIDE OF EXPRESSWAY LOOKING WEST)**

**NOTE:** TO BETTER REPRESENT THE BRIDGE, THE PROPOSED VISUALISATION HAS BEEN DRAWN FROM A VANTAGE POINT THAT IS CLOSER TO THE BRIDGE THAN THE ORIGINAL AEE RENDER

**NOTE:** CWB BRIDGE NOT SHOWN

DETAIL DESIGN (DET)

No.	Revision	By	Chk	Chk.V	Appd	Date
C	CERTIFIED ISSUE - REV C	VB			DS	18/07/14

Original Scale (A1)	Design	Drawn	Date	Approved For Construction*
AS SHOWN	FB	VB	18/07/14	
Ridroad Scale (A3)	Design Verifier			
AS SHOWN	Design Check			

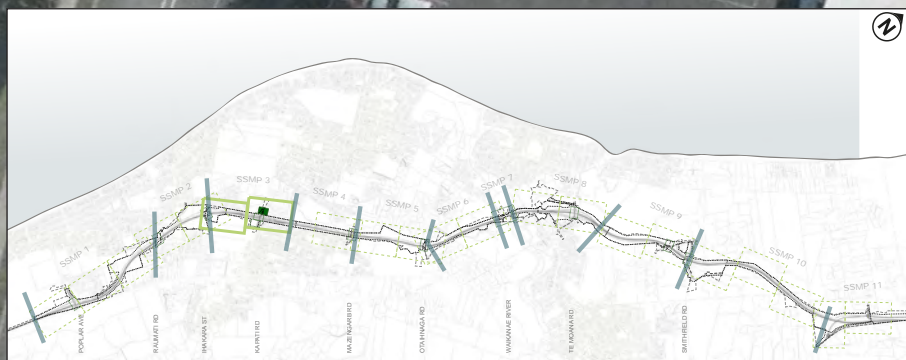
\* Refer to Revision 1 for Original Signature

Project: SH1 MACKAYS TO PEKA PEKA EXPRESSWAY  
RP 1012/0.00 TO 1023/5.00

Title: SSMP 3[350/370/380] - SHEET 8  
WHAREMAUKU STREAM

Drawing No: M2PP-121-D-DWG-8801  
Rev: C





Landscape		Ecology		CWB	
	Individual Retained Trees		Retained Valued Terrestrial Vegetation		Loose Chip CWB
	Retained Vegetation		Retained Valued Wetland Vegetation		Chip Seal CWB
	Grass		Planted Indigenous Terrestrial Habitat		Concrete CWB
	Massed Planting		Planted Indigenous Wetland Habitat		Existing Access
	Massed Planting with Tree Enrichment		Stream Mitigation / Riparian Habitat		Track or CWB
	Wetland / Riparian Planting		Existing Water Body		
	Massed planting low		Batter Slope		
	Specimen Tree		Tadpole		

- KEY CPTED CONSIDERATIONS:**
- NO TALL BARRIERS OR ELEMENTS THAT CREATE 'OUTSIDE ROOMS'/PLACES TO HIDE.
  - CLEAR LINES OF SIGHT AT INTERSECTIONS.
  - ENSURE CLEAR VIEWS TO THE EXITS OF CWB.
  - REMOVE TALL VEGETATION FROM CWB INTERSECTIONS.
  - THE 'TAGGABILITY' OF MATERIALS AND SURFACES.
  - LOW LEVEL ORIENTATION LIGHT AT OTAIHANGA CROSSING POINT.

A1 REPRODUCTION SCALE  
0mm 20 40 60 80 100

A3 REPRODUCTION SCALE  
0mm 10 20 30 40 50



DETAIL DESIGN (DET)

No.	Revision	By	Chk	Chk.V	Appd	Date
C	CERTIFIED ISSUE - REV C	VB		DS		18/07/14

Original Scale (A1)	Design	FB	18/07/14	Approved For Construction*
1:250	Drawn	VB	18/07/14	
Reduced Scale (A3)	Design Verifier			Date
1:500	Design Check			

\* Refer to Revision 1 for Original Signature



**MacKays to Peka Peka**  
Wellington Northern Corridor

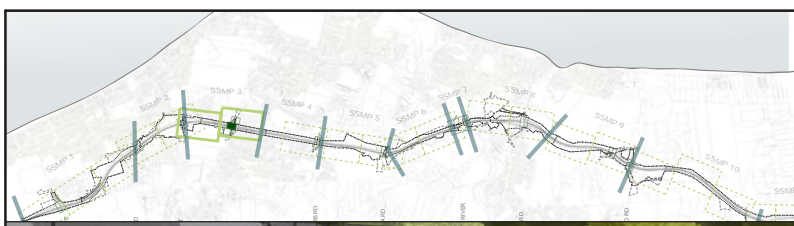
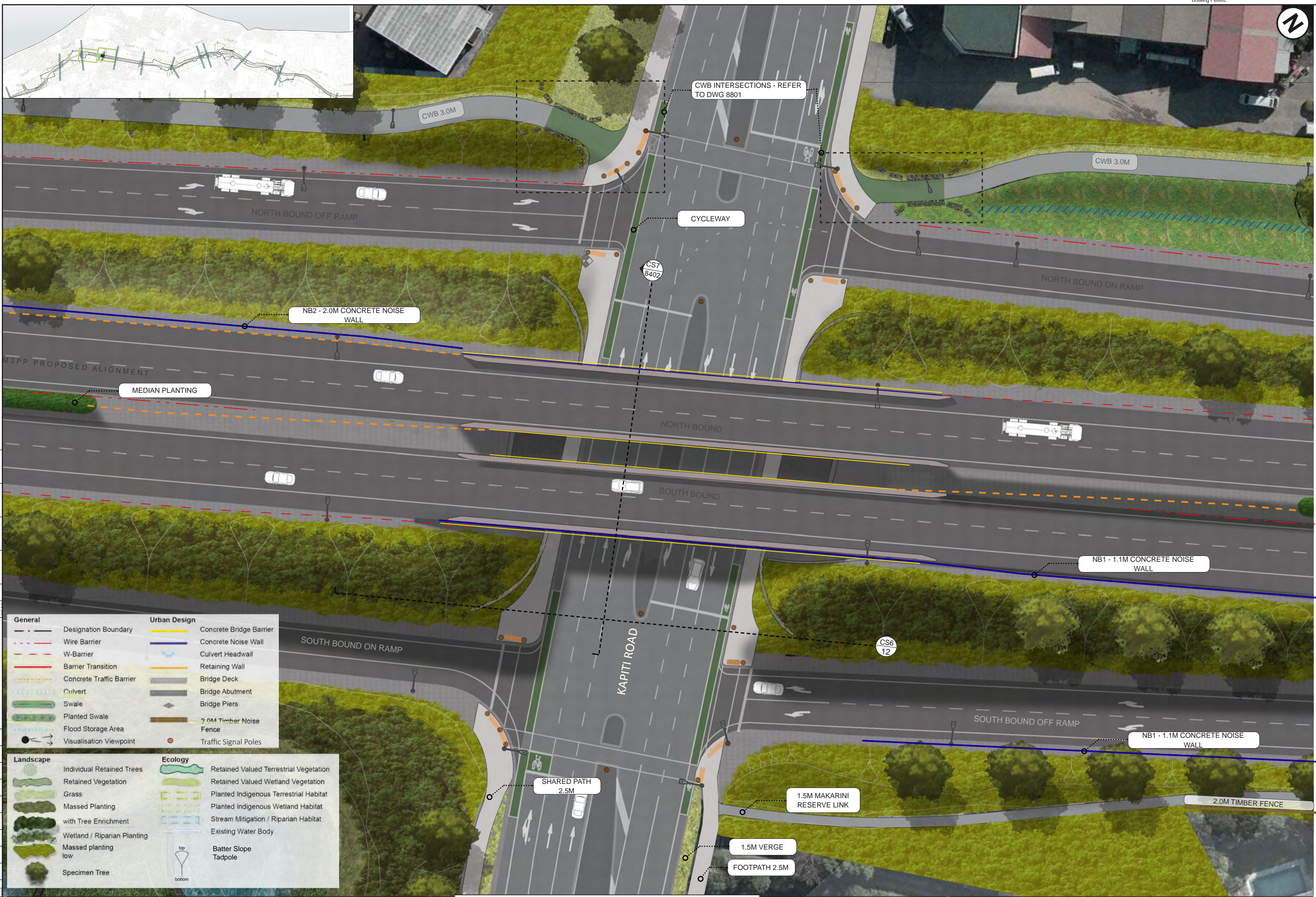
Project: SH1 MACKAYS TO PEKA PEKA EXPRESSWAY  
RP 1012/0.00 TO 1023/5.00

Title: SSMP 3[350/370/380] - SHEET 9  
BRIDGE MASTERPLAN

Drawing No: M2PP-121-D-DWG-8301

Rev: C





A1 REPRODUCTION SCALE  
0mm  
20  
40  
60  
80  
100

A3 REPRODUCTION SCALE  
0mm  
10  
20  
30  
40

General		Urban Design	
	Designation Boundary		Concrete Bridge Barrier
	Wire Barrier		Concrete Noise Wall
	W-Barrier		Culvert Headwall
	Barrier Transition		Retaining Wall
	Concrete Traffic Barrier		Bridge Deck
	Culvert		Bridge Abutment
	Swale		Bridge Piers
	Planted Swale		2.0M Timber Noise Fence
	Flood Storage Area		Traffic Signal Poles
	Visualisation Viewpoint		

Landscape		Ecology	
	Individual Retained Trees		Retained Valued Terrestrial Vegetation
	Retained Vegetation		Retained Valued Wetland Vegetation
	Grass		Planted Indigenous Terrestrial Habitat
	Massed Planting		Planted Indigenous Wetland Habitat
	with Tree Enrichment		Stream Mitigation / Riparian Habitat
	Wetland / Riparian Planting		Existing Water Body
	Massed planting low		Batter Slope
	Specimen Tree		Tadpole

No.	Revision	By	Chk	Chk.V	Appd	Date
C	CERTIFIED ISSUE - REV C	VB		DS		18/07/14

Original Scale (A1)	Design	FB	18/07/14	Approved For Construction
1:250	Drawn	VB	18/07/14	
Reduced Scale (A3)	Design	Chk	Date	
1:500	Verifier			
	Check			

**NZ TRANSPORT AGENCY**  
WAKA KOTAHĪ

**MacKays to Peka Peka**  
Wellington Northern Corridor

Project: SH1 MACKAYS TO PEKA PEKA EXPRESSWAY  
RP 1012/0.00 TO 1023/5.00

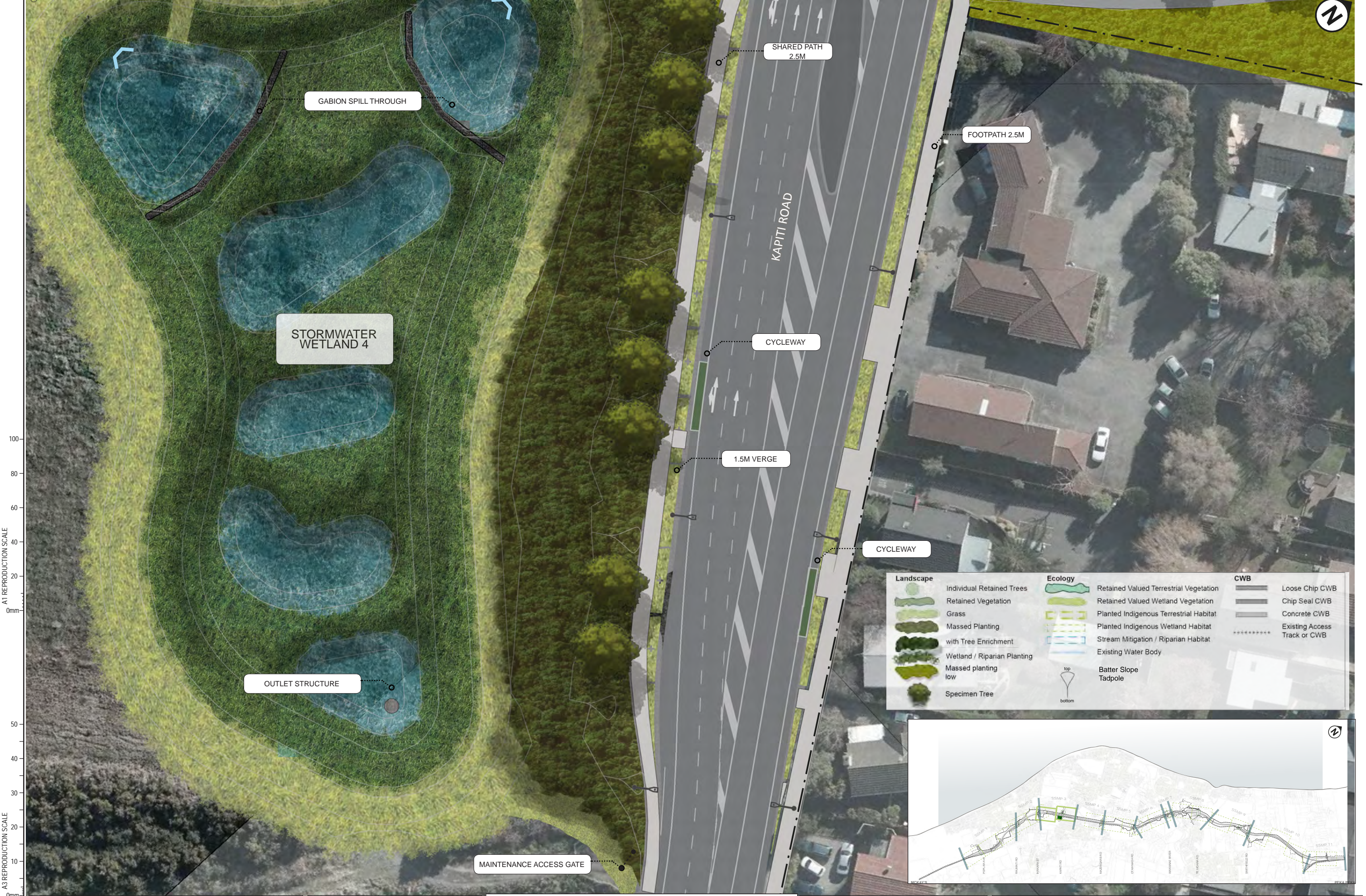
Title: SSMP 3[350/370/380] - SHEET 10  
KAPITI BRIDGE

Drawing No: M2PP-121-D-DWG-8302

Rev: C

DETAIL DESIGN (DET)





A1 REPRODUCTION SCALE  
0mm 20 40 60 80 100

A3 REPRODUCTION SCALE  
0mm 10 20 30 40 50

No.	Revision	By	Chk	Chk.V	Appd	Date
C	CERTIFIED ISSUE - REV C	VB		DS		18/07/14

Original Scale (A1)	Design	FB	18/07/14	Approved For Construction
1:250	Drawn	VB	18/07/14	
Reduced Scale (A3)	Design Verifier			
1:500	Dwg Check			



**MacKays to Peka Peka**  
Wellington Northern Corridor

Project: SH1 MACKAYS TO PEKA PEKA EXPRESSWAY  
RP 1012/0.00 TO 1023/5.00

Title: SSMP 3[350/370/380] - SHEET 11  
BRIDGE MASTERPLAN

Drawing No: M2PP-121-D-DWG-8303

C

DETAIL DESIGN (DET)



**CS6 - CROSS SECTIONAL ELEVATION-KAPITI BRIDGE**

FACING WEST SCALE - 1:200@A3

**MATERIAL A**



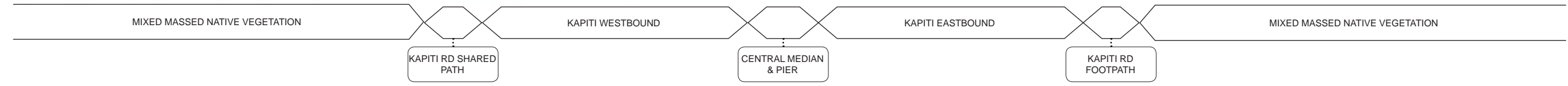
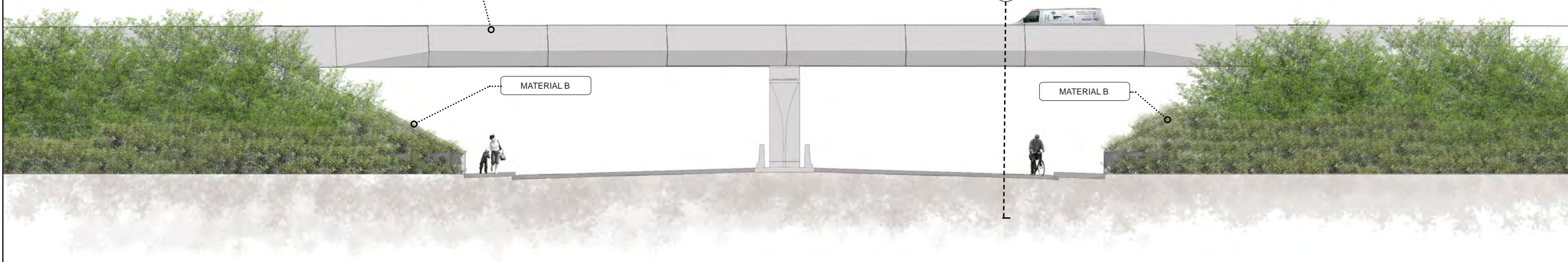
BRIDGE BARRIER:  
PRECAST  
CONCRETE WITH  
2 COATS WHITE  
KIEH COATING &  
ANTI GRAFFITI  
PROTECTION-  
PENDING SAMPLE  
PANEL APPROVAL

**MATERIAL B**



BRIDGE ABUTMENT:  
PRECAST CONCRETE  
PANEL WITH FORMLINER  
PATTERN ALTERNATING  
BETWEEN EACH  
PANEL. MATT GRAFFITI  
PROTECTION - PENDING  
SAMPLE PANEL APPROVAL

SITE CONTEXT PLAN-M2PP-121-D-GPH-8102



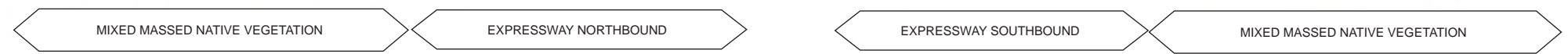
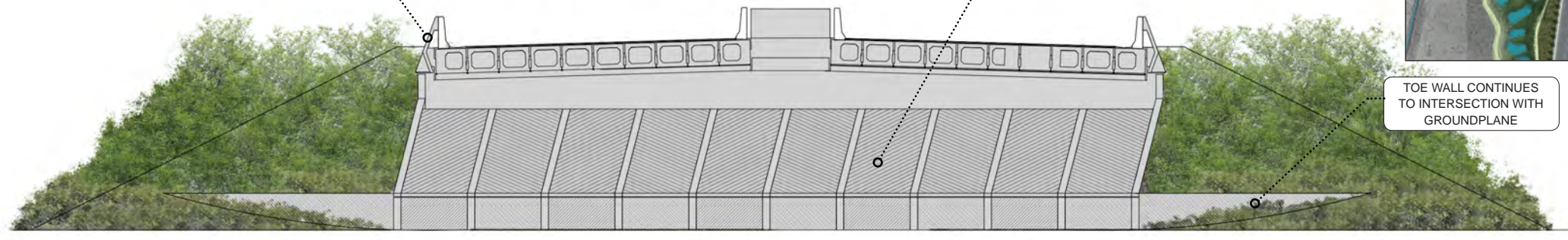
**CS7-CROSS SECTIONAL ELEVATION-ABUTMENT**

FACING NORTH SCALE - 1:200@A3

**MATERIAL A**

**MATERIAL B**

SITE CONTEXT PLAN-M2PP-121-D-GPH-8102



A1 REPRODUCTION SCALE

A3 REPRODUCTION SCALE

No.	Revision	By	Chk	Chk.V	Appd	Date
C	CERTIFIED ISSUE - REV C	VB		DS		18/07/14

Original Scale (A1)	Design	FB	18/07/14	Approved For Construction?
AS SHOWN	Drawn	VB	18/07/14	Date
Roadwork Scale (A3)	Design Verifier			
AS SHOWN	Design Check			

Project: SH1 MACKAYS TO PEKA PEKA EXPRESSWAY  
RP 1012/0.00 TO 1023/5.00

Title: SSMP 3[350/370/380] - SHEET 12  
ROAD SECTIONS

Drawing No: M2PP-121-D-DWG-8402

Rev: C

DETAIL DESIGN (DET)