



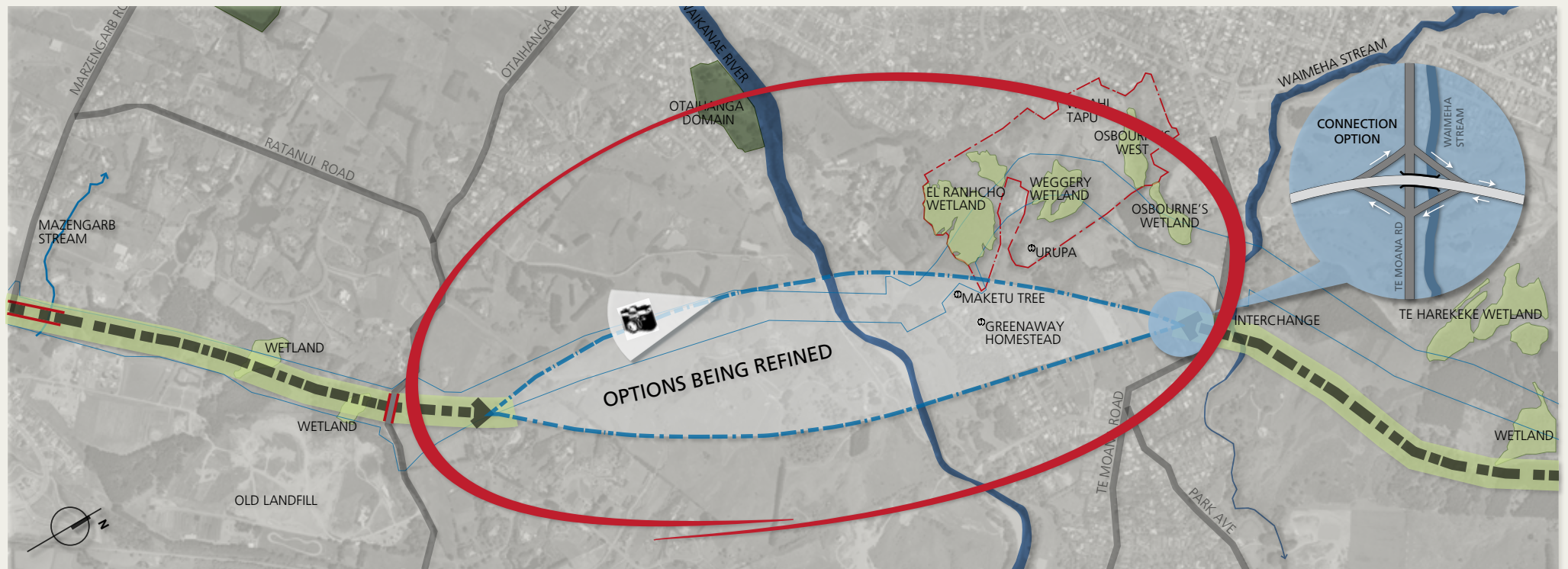
1 MacKays to Peka Peka Expressway

Recent design progress

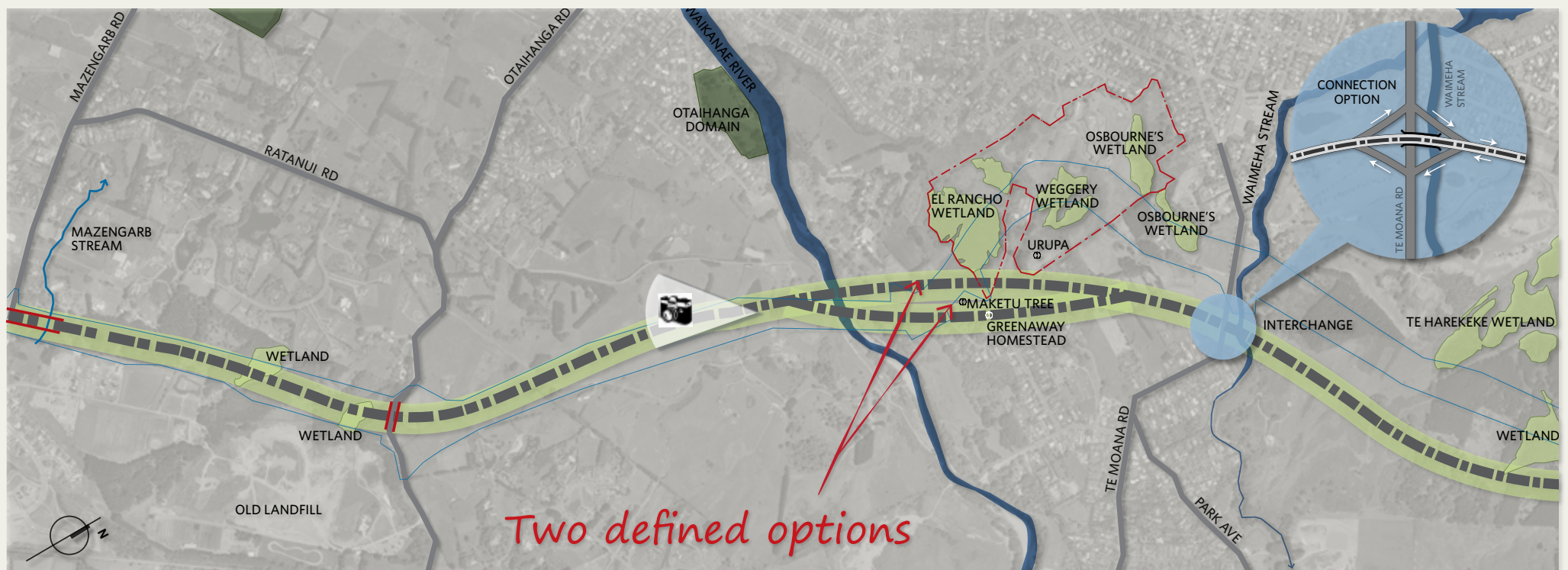
In the last two months significant progress has been made in Waikanae

If consultation had started on 7 November we would not have been able to show you specific options for the route between Otaihanga Road and Te Moana Road because we were still evaluating a number of options. Recent design progress has enabled us to identify the two best options for us to present to you.

Then



Now



We have also been able to refine our design for how the connections at the southern and northern ends of the route could work

At the **southern end** our earlier design had not yet resolved how to maintain the link between Poplar Avenue and Main Road. This has now been resolved and is shown on Poster 9.

At the **northern end** we have been able to improve the design for this connection resulting in reduced land requirement. This is shown on Poster 12.