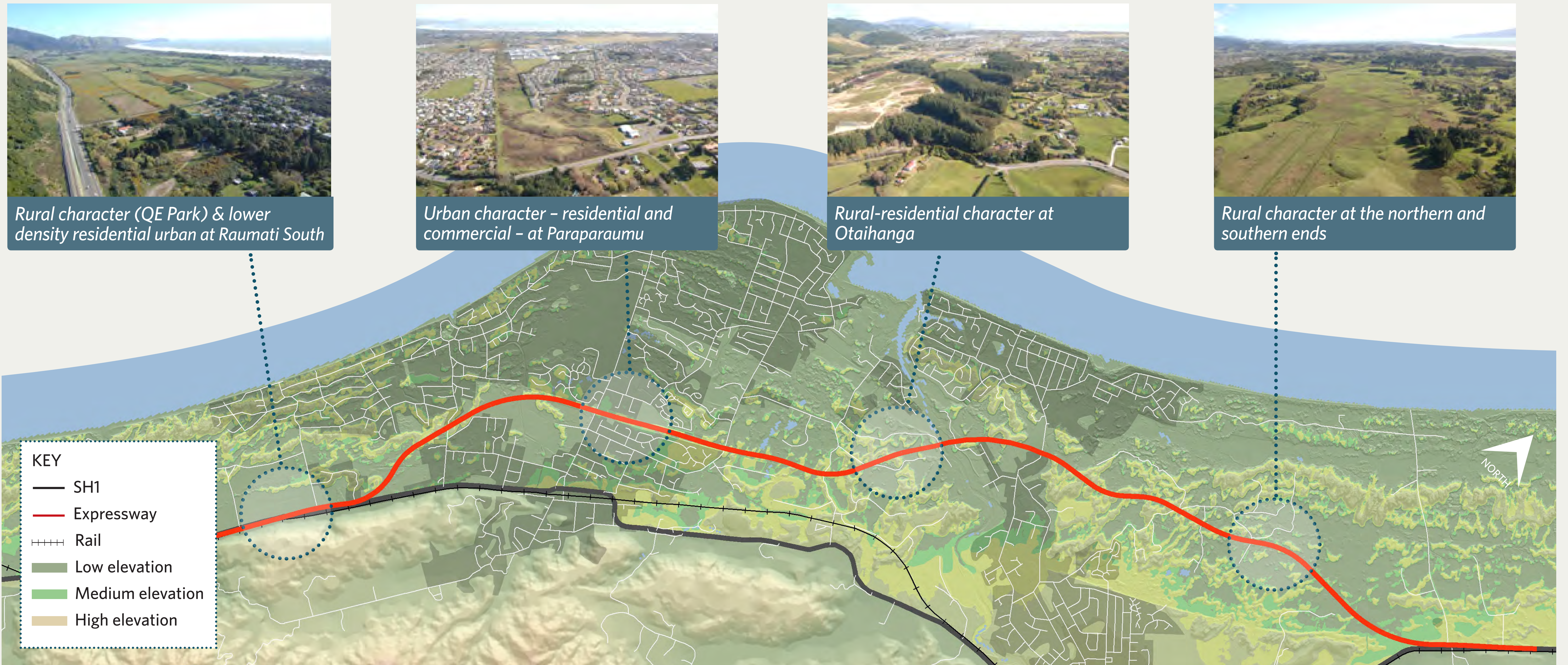


1 MacKays to Peka Peka Expressway

Landscape

15

The expressway passes through landscape with different characters - these are urban, rural-residential and rural.



Landscape features

Natural features such as dunes, wetlands, streams, and vegetation are distinctive elements along the route and combine to contribute to the sense of place.



Dunes at Raumati Road - many of the dunes that originally dominated the coastal plains have been lost through urban and farming development.



Vegetation - comprises a mix of exotic shrubland, pasture, shelterbelts and amenity tree planting, and small areas of young regenerating native vegetation.



Wetlands at Otaihanga - some wetlands have degraded through weed infestation and poor quality water runoff.



Waimeha Stream - many of the once meandering streams and wetlands have been channelled into narrow drains to assist the ability of the land to be farmed or urbanised.

Approach

The landscape design approach has been to:

- avoid natural features wherever possible
- shape and integrate earthworks created by construction of the expressway with adjoining landforms
- locate planted buffer areas between the expressway and the surrounding landscape
- plant species along the route to reflect the local landscape character
- use plant species that will thrive in the local environmental conditions
- utilise wetland areas for stormwater as part of the expressway and integrate them into the design as part of the landscape mitigation.

