

SH1 RE-ROUTE & EXPRESSWAY CONSTRUCTION THROUGH PEKA PEKA

What to expect over the next few months

If you live close to this area, or drive the existing part of State Highway 1 where we're working, you'll have noticed our team working near SH1 and through the top of Peka Peka and Te Kowhai Roads over the past months.

There will be a lot more happening as the Expressway opening gets closer, including several re-routes of local and SH1 traffic. This information sheet tells you what to expect, when we are planning to do work and what that might mean for you while we build the final local and Expressway connections.

STAGED SH1 RE-ROUTE

There are temporary re-routes of SH1 traffic through Peka Peka planned for October until the Expressway opens.

These changes are so we can continue works in the Peka Peka interchange area as quickly as possible, without having to close lanes and to keep road users and workers safe.

We'll be telling road users about the final start times for these re-routes before then, through our normal channels like the Express Lane newsletter and also through local and wider media. There'll also be clear signage before and during the changes to help guide you to the correct route.

The re-routes will carry SH1 traffic along the new local link road and over the bridge we have built as part of the Expressway construction. This is so we can finish work on local Expressway connections where we need to work along the current SH1.

The link road for SH1 traffic driving south from Te Horo and Ōtaki will start just in front of the former entrance to Te Kowhai Road. For traffic coming from Waikanae, the link road starts about 800 metres south of Peka Peka Road on SH1.

There will be **two stages** to the SH1 route change after we have completed building an access ramp near the top of Te Kowhai Road along the state highway.

- **First, all northbound SH1 traffic** will be re-routed along the link road past the top of Peka Peka Road. We expect this will be for a few days and no more than a week.
- **After this, both north and southbound SH1 traffic** will travel this new route. At that point we'll be able to start work on the southbound off-ramp from the Expressway, to the north of Hadfield Road, and this area needs to be closed to traffic.

The temporary SH1 route is about 350 metres longer than the current drive on the existing SH1 through this area. Once the Expressway is open, traffic will use this local road to connect with Peka Peka Road, Te Kowhai Road, Hadfield Road and the partial interchange northbound on-ramp.

LOCAL ACCESS DURING THE RE-ROUTE

- **Peka Peka Road** residents will access their road directly via this link road, at a temporary t-intersection. There will be a turn pocket arrangement the same as at the existing intersection with SH1.
- **Te Kowhai and Gary Road** residents will join the link road route from a separate access road near the top of the old intersection with SH1.
- **Hadfield and Octavius Road** residents will need to use this re-route to drive north and return from the north, while we construct a southbound off-ramp for the Expressway opening.

The maps over the page show the temporary SH1 re-routes at each stage, until both north and southbound traffic has been re-routed.

The re-route will be in place until the Expressway opens.



HEADING NORTH TOWARDS THE LINK ROAD BRIDGE AT PEKA PEKA

Our works are weather dependent so if anything changes we'll keep you in the loop While we plan to our best ability, there are times when weather, or other things, change that plan.

BEFORE THE RE-ROUTE - Ramp construction

An access ramp will be constructed near the top of Te Kowhai Road but SH1 will continue to flow as it does now, with the 70km/h speed limit in place. Later we'll be redirecting SH1 traffic onto this ramp, through the new link roads and past a new access point to Peka Peka Road.

RE-ROUTE STAGE 1 - Northbound SH1 traffic will be re-routed along the link road past the top of Peka Peka Road

We'll be working hard to make this arrangement is as short as possible, so we can get north and southbound SH1 traffic onto the same route quickly. We expect it will be for a few days and means the following local routes will be in place:



To reach Peka Peka Road from the north

Continue on the southbound SH1 route until the new link road turnoff on the right and then travel north back to the intersection with Peka Peka Road.

To travel south from Peka Peka Rd and Te Kowhai Road

If you want to travel south on SH1 directly from these two streets there will be a southbound route open for you to use, over the bridge to the south.

To reach Hadfield Road from the north

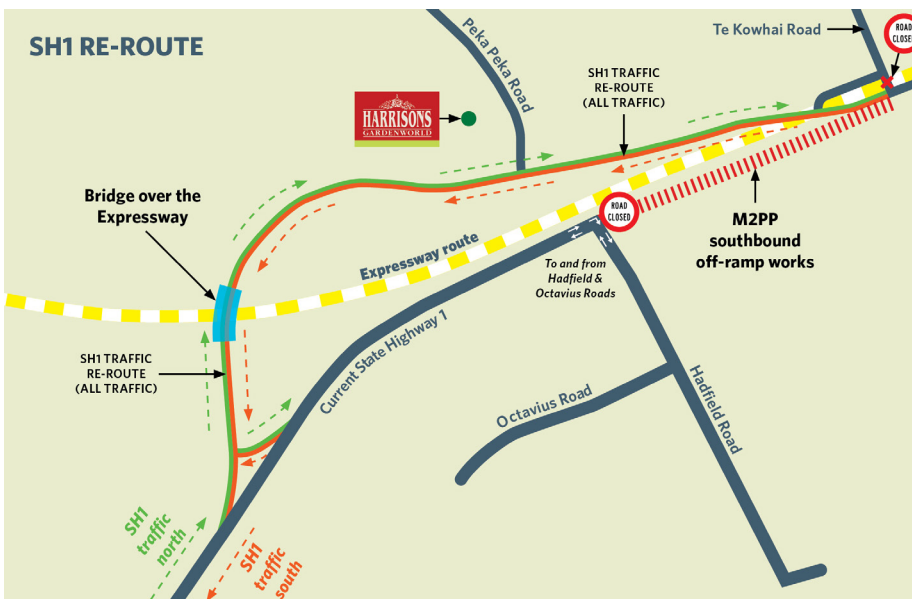
Continue on the southbound SH1 route and turn left into your street as you do now.

To reach Hadfield Road from the south

Continue along the northbound SH1 route and turn left at the link road. Turn right

through the turn bay at the island and continue north to Hadfield Road. Southbound SH1 traffic will be on the other side of this route back to your street.

RE-ROUTE STAGE 2 - All SH1 traffic will be re-routed along the link road past the top of Peka Peka Road



QUESTIONS AND ANSWERS

How will I know which way to go and when?

There will be plenty of clear signage and speed reductions during the works to help traffic safely use the correct routes.

Will the speed be reduced?

We expect the speed limit for the link road will be 70 km/h as it has been in this area throughout the interchange finishing works.

What delays might occur for road users?

We're conscious of the potential for some small delays as people adjust to the new route, and we'll be working hard to keep disruption to a minimum. The temporary SH1 route is about 350 metres longer than the current drive.