



# Lyttelton Tunnel Fire Protection Upgrade Project

PROJECT UPDATE

MARCH 2018



Work to improve safety in the Lyttelton Tunnel with a new \$28.7 million fire protection system is ramping up - the current contractual completion date is December 2018.

Once the system is operating, it will improve safety for tunnel travellers, on a route that's an economic life line for both Canterbury and the South Island.

## MANAGING TUNNEL TRAFFIC

Up to 15 separate full late night/early morning tunnel closures could be required in the second half of this year as part of the installation and testing of the tunnel's new fire suppression system.

The aim is to keep full traffic lane closures to an absolute minimum as well as disruptions to motorists. The community and tunnel users will be given at least 3 weeks notice prior to the full closures.

Emergency services will have access through the tunnel at all times. A 90-day schedule for single and full traffic lane closures is updated monthly and can be viewed at [www.nzta.govt.nz/assets/projects/lyttelton-tunnel/lyttelton-tunnel-lane-closures.pdf](http://www.nzta.govt.nz/assets/projects/lyttelton-tunnel/lyttelton-tunnel-lane-closures.pdf)

## WHAT DOES THE PROJECT INVOLVE?

The project involves installing a new deluge fire suppression system designed to contain a fire until emergency services reach the scene and building a large reservoir to supply water for this system. Some earthquake strengthening of the tunnel portal buildings will be carried out along with communication equipment upgrades.

A new wastewater pipe is being installed to futureproof wastewater services in Lyttelton and surrounding areas. Find out more about this project at <https://ccc.govt.nz/services/water-and-drainage/wastewater/wastewater-projects/lyttelton-harbour-wastewater-project>

## WHAT'S BEEN COMPLETED SO FAR?

Construction of a pump house is nearly complete and ground works have started for the building of a large new water reservoir. Work is on track with laying a 200 metre long pipe to feed water from the reservoir to the pump house.

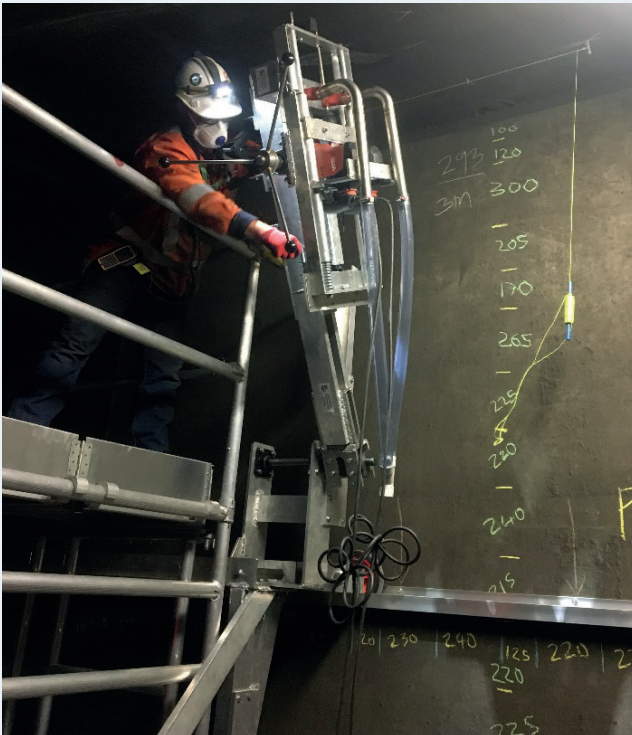


Two of the pumps for the water deluge system

## AN INSIDE JOB

Finding a suitable work platform for the construction crew to do their jobs in the confined surrounding of the tunnel duct was challenging. This had to provide a safe and stable working surface to install brackets for the sewer line inside the tunnel ventilation duct.

Crews often have to walk up to 1km to reach their work site inside the tunnel ducts dressed in full protection kit – not an easy task.



The working platform and drill rig designed for ensuring tunnel duct panels loading restrictions and increased hole drilling efficiencies are achieved during the installation of 9km of new pipe, held in place by 1326 brackets.



One of the wall mounted speakers for a new public address system to improve communications inside the Lyttelton Tunnel. The system broadcasts safety instructions to tunnel users in an emergency.



Get the latest tunnel travel information at:

- [www.tfc.govt.nz](http://www.tfc.govt.nz)
- [www.facebook.com/nztasouthisland](https://www.facebook.com/nztasouthisland)
- [www.nzta.govt.nz/traffic](http://www.nzta.govt.nz/traffic)
- [twitter.com/NZTACWC](https://twitter.com/NZTACWC)
- Call 0800 4 HIGHWAYS (0800 44 44 49)
- Register for traffic updates at: [www.onthemove.govt.nz](http://www.onthemove.govt.nz)

Find out more about this project at:

- [www.nzta.govt.nz/lyttelton-tunnel](http://www.nzta.govt.nz/lyttelton-tunnel)

For questions or feedback on the construction of this project, contact McConnell Dowell at:

- [lyttelton@mcgroup.com](mailto:lyttelton@mcgroup.com)
- Call 0508 MCD COMMS (0508 62326667)