

# Huntly project update

August 2018



The Northern Interchange bridge abutments will be spanned by beams up to 50 metres long.

## On-site info day

**Mark down Saturday 27 October. That's when we are planning to open up the project to the public.**

It will be based at the site office, off McVie Road next to the new expressway. There will be displays and presentations but the highlight is sure to be bus rides on the new route up the Taupiri Range. How far we can go by bus depends on pavement progress over winter.

Look out for more information about the day in the next project update, or on Facebook [www.facebook.com/waikatoexpressway](http://www.facebook.com/waikatoexpressway).

## Lots to see north and south

Much of the 15km Huntly section of the Waikato Expressway is being built out of sight, but SH1 travellers are getting a good look now at progress on the northern and southern interchanges.

The structures team are now cracking on with bridge building at the Northern Interchange after traffic was switched on to the new on-ramp in June.

This has opened up the site and created space so construction can continue on the super structure of the bridge.

This bridge will take the traffic over the North Island Main Trunk Railway line and the south-bound off-ramp to Huntly. The steel beams arrive in mid-August, with two cranes needed to lift them into place.

"The co-ordination of the two cranes working together will be a spectacular sight," says Fulton Hogan-HEB joint venture project director Tony Dickens.

"The bridge spans are up to 50 metres long so they will be transported to site in two halves. Each half will then be lifted on to temporary supporting towers so that they can be permanently bolted together."

The bridge will form the gateway to the greenfields section of the expressway. "It should attract a lot of attention from the travelling public. But please drive carefully through this construction site," says Tony.

There's also plenty of action down at the Gordonton Road Interchange at the southern end of the project where the Huntly section will seamlessly connect to the completed Ngaruawahia section.

"There's been good progress there on creating the on and off-ramps, and also on our final stream bridge over the Mangatoketoke."

With winter set in the project focus has switched to completing the bridge structures and laying pavements.

A very wet February meant there's still 300,000 cubic metres of earthworks remaining but that's expected to be gone by Christmas.

"The February delay made us change our earthworks goal to covering at least 6km of the subgrade with rock before winter and we actually

achieved 8km of subgrade covered. This has enabled us to keep making progress with the subgrade improvement layers, the subsoil drains, the network drainage and the Hi-Lab pavements despite the winter weather," says Tony.

"Progress has been good so far and consequently the first sections of the main alignment pavement are already being stabilised ready for the seal. Our target is to seal 6km of the alignment (that's both north and south-bound lanes) by Christmas 2018. When you add this to the 1km at the northern interchange it will mean that 50 per cent of the road will be sealed."

Construction continues on the three remaining local road bridges which will carry local traffic over the alignment. Orini Road overbridge was the final bridge to start construction with the Mechanically Stabilised Earth abutment walls under way.

Construction of the four river bridges is now completed, with just the "finishing" off work to complete Mangatoketoke Stream Bridge.



**Keeping you informed**

We'll keep you informed through these quarterly updates, information to residents about works in their area, and links on our website and Facebook page.



Follow us on Facebook  
[Facebook.com/waikatoexpressway](https://www.facebook.com/waikatoexpressway)



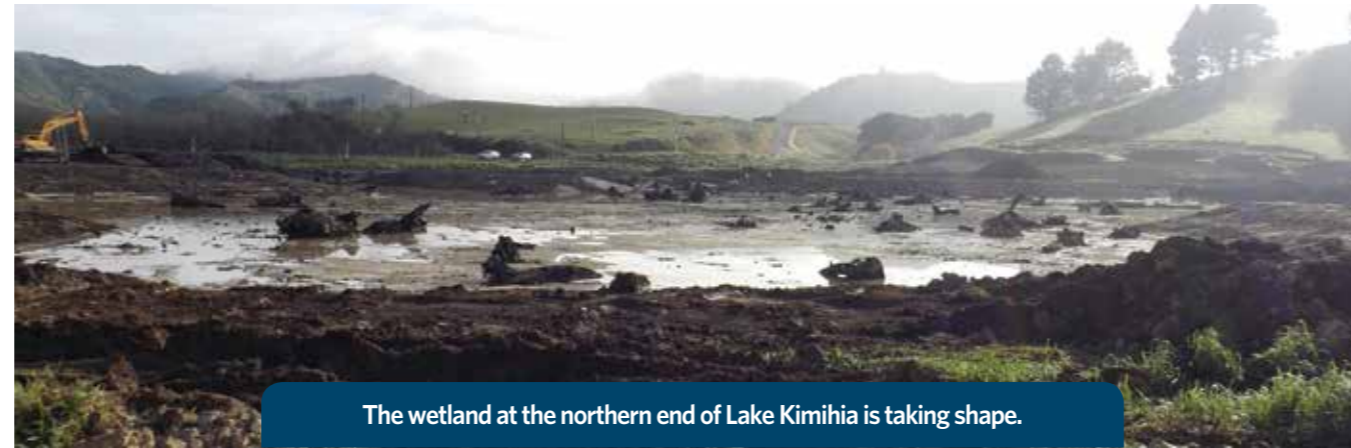
To sign up for our email newsletters go to  
[www.nzta.govt.nz/waikatoexpressway](http://www.nzta.govt.nz/waikatoexpressway)



# What's been happening this autumn and winter



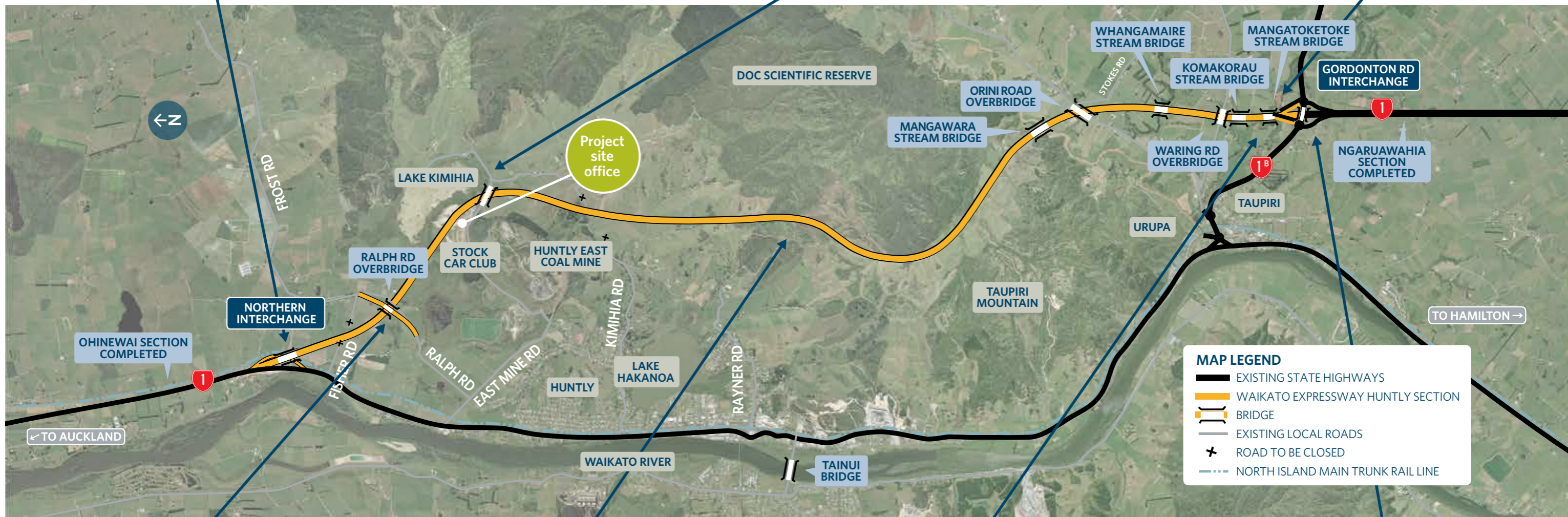
Sealing work at the Northern Interchange.



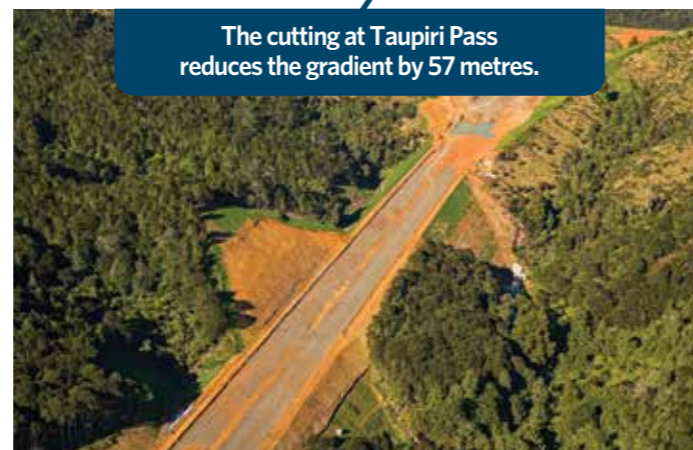
The wetland at the northern end of Lake Kimihia is taking shape.



Pavement construction is under way at multiple sites, including near Waring Road.



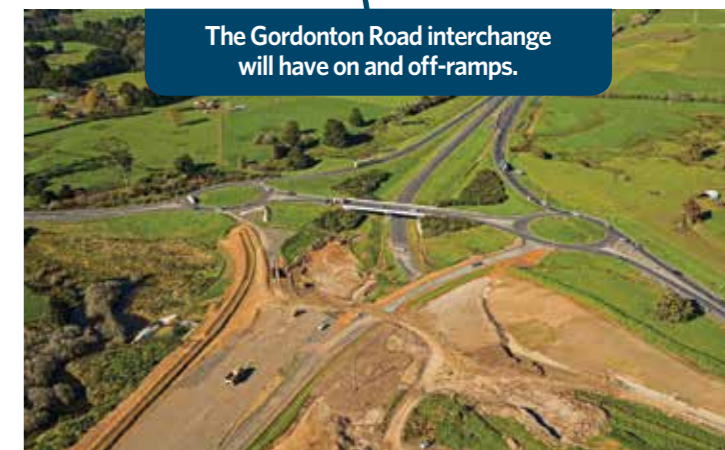
Planting on the roadside berms near Ralph Road.



The cutting at Taupiri Pass reduces the gradient by 57 metres.

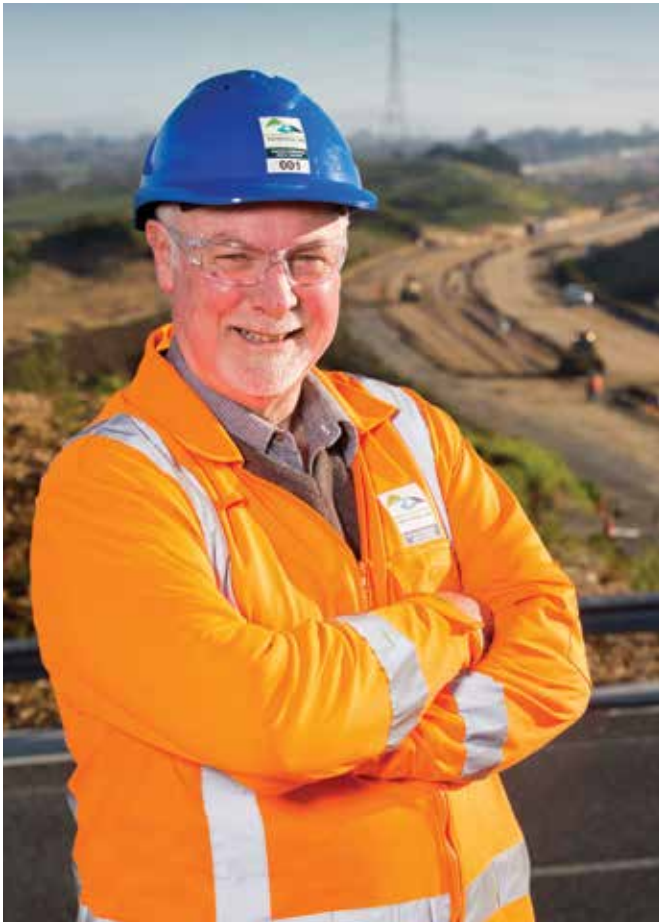


The concrete deck has gone on Mangatoketoke Stream bridge, the last stream bridge to be decked.



The Gordonton Road interchange will have on and off-ramps.





Retiring project director Tony Dickens says Huntly has been a career highlight.

## Tony finishing on a high

Huntly project director Tony Dickens wraps up 43 years in the construction industry with his retirement at the end of July.

A Fulton Hogan man for 36 years, Tony also headed the Alliance which built the Te Rapa section which opened in late 2012.

"The Huntly project has been a huge and enjoyable challenge but now there are other things I want to do in retirement.

"So I will watch the completion of Huntly with interest, but I won't be on site making the decisions."

Looking back on his career, Tony has gone from building driveways and carparks to managing large roading projects – an area where he has a huge depth of experience.

"Project management has definitely been my thing," says Tony. "I love the logistics of it, the engineering of it and the sense of achievement that comes from creating something from nothing,

the team building, and all those things that make up a project.

"I enjoy building teams. A project like Huntly is all about bringing together a couple of hundred people from all over the place, moulding them into a team and then delivering a project four or five years later exactly on time and on budget – which is a challenge I enjoy as well.

"I have had a fantastic career in which the ups have far outweighed the downs. And it would be fair to say that the Huntly project has been the highlight of my career, so I step away on a high."

Tony is looking forward to more family time, travelling with wife Rose, gardening and keeping fit on his bike.

Tony's No 2 at Huntly, Tony Adams, is stepping up the director's role.

## Construction manager takes the helm

New project director Tony Adams has been a familiar face at Huntly since the get-go in 2015.

He has been construction manager since March 2015 and steps up in to the director role with the retirement of Tony Dickens.

"I'm looking forward to the challenge and want to maintain the momentum of the project which is on track for completion in 2020."



Tony Adams

Tony joined Fulton Hogan as a young engineer in the Central Otago region 24 years ago and worked as a contract manager in Otago and Southland. He transferred to the Auckland region in 2007 as the contracts manager and has been involved in some

large earthworks projects such as the Auckland Airport second runway and Puketutu Island rehabilitation. He also spent several months working at Pago Pago in

America Samoa project managing an airport runway construction project.

This work experience has prepared him well for the challenges ahead. "Huntly's a great project with lots of challenges and a great team, so I'm keen to see this through."

Outside of work, Tony enjoys spending time with his wife Kelly and three children.

His two adult children are at university and in the workforce, and he is heavily involved in the surf lifesaving club at Whangamata.



### Information

**Project site office**  
199 McVie Road



**Freephone**  
0800 HUN INFO (486 463)

#### Lorraine Pennington

Fulton Hogan HEB Joint Venture, Stakeholder liaison manager

**Phone** 07 828 0137

**Mobile** 027 503 6749

**Email** [lorraine.pennington@huntlyproject.co.nz](mailto:lorraine.pennington@huntlyproject.co.nz)

#### Simon Brandon

NZ Transport Agency, Communication and stakeholder liaison manager

**Phone** 07 958 7888

**Mobile** 021 615 461

**Email** [simon.brandon@nzta.govt.nz](mailto:simon.brandon@nzta.govt.nz)