



Huntly project update

March 2017



The Huntly Project looking south towards the Taupiri Summit

Progress to date

Excellent progress has been made since the last newsletter, despite some poor weather over summer.

Over 1.2 million cubic metres of material has been shifted to date this earthworks season, and the project team was on track to meet the target of 2 million cubic metres but the two recent storms will make it a challenge to achieve. Other construction highlights include;

- The Mangawara Stream bridge concrete deck has now been placed and is able to be used by construction traffic to haul material from the northern side of the Mangawara Stream for the Orini Road embankments
- Soon all the beams on the Whangamaire Stream bridge will be in place to be followed by the deck construction
- Two successful drill and blasting operations have been completed at the Kimihia cut and the Taupiri Pass
- Northern interchange northern mechanically stabilised earth (MSE) wall completed and construction underway on the southern MSE wall
- Piling is about to re-commence at the Komakorau and Mangatoeketoke Stream bridges

Northern interchange traffic switch

At the Northern Interchange a series of changes in the road alignment has seen SH1 traffic moved to a long term temporary alignment with temporary restricted speed limits in place. In the future the temporary alignment will become the new south-bound off-ramp for Huntly bound traffic.



Public info day

Thursday May 18, 2pm-7pm
 Riverside Room, Huntly Civic Centre

This is your opportunity to check out the great work of the project team.

There will be photos, maps, displays and other information about the project, with staff on hand to answer your questions.



Keeping you informed

Keeping the community informed about progress on the Huntly section is important to the project team.

We'll also be keeping you informed through these quarterly newsletters, regular updates to residents of works happening in their area and links on our website and Facebook page.



Follow us on Facebook
[Facebook.com/waikatoexpressway](https://www.facebook.com/waikatoexpressway)



To sign up for our email newsletters go to
www.nzta.govt.nz/waikatoexpressway

An aerial view of what's happening



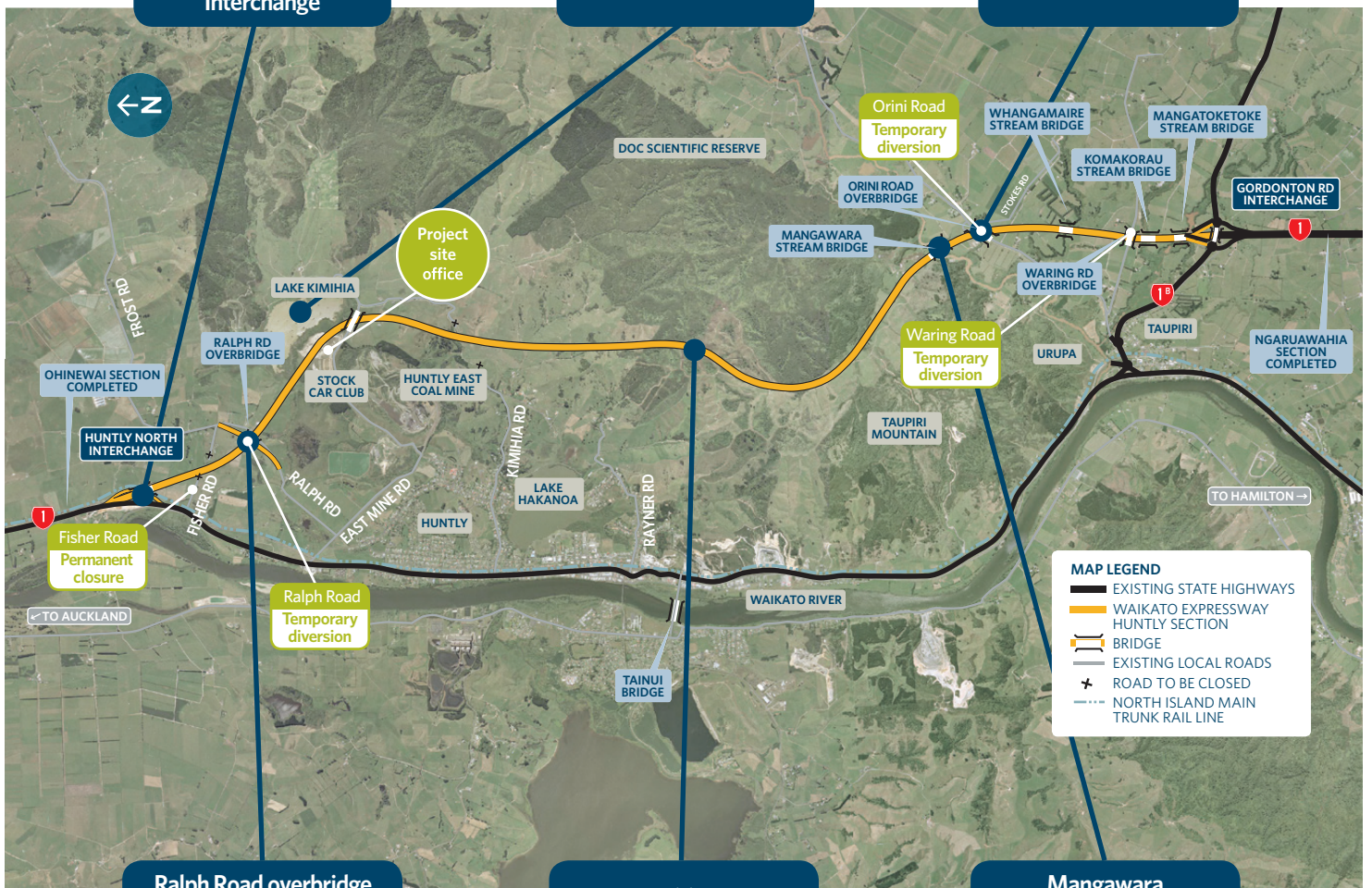
Huntly Northern Interchange



Lake Kimihia



Orini Road



Ralph Road overbridge and temporary diversion

Taupiri Pass

Mangawara Stream bridge



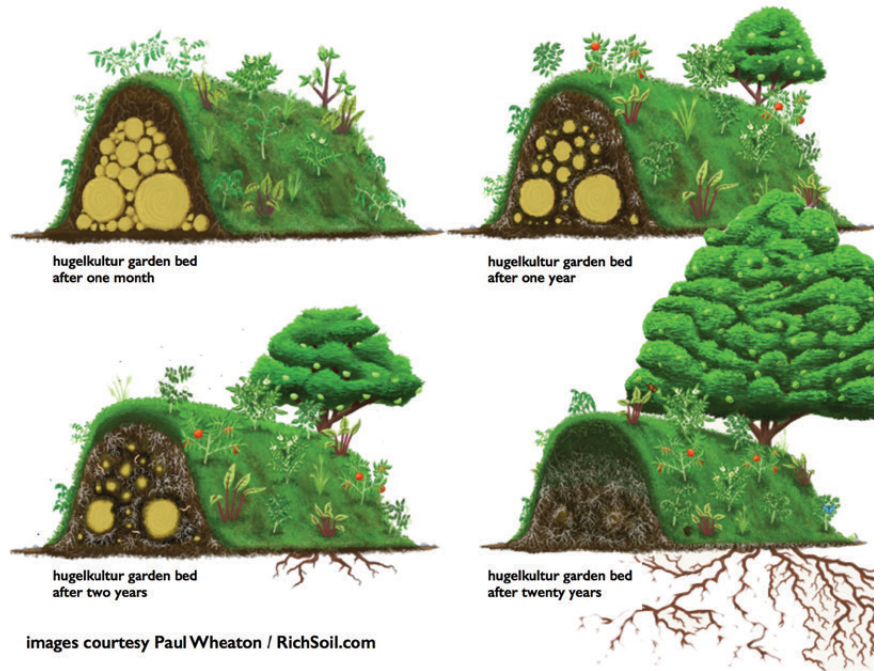
Hugelkultur at Huntly

At Huntly the team has created hugelkultur beds utilising the waste organic material created during tree clearing.

What is hugelkultur? It's a German term for using waste organic matter as compost in a raised garden bed that rots and breaks down over time creating a nutrient rich, organic material for plants to grow in.

By building hugelkulture beds we're helping the climate by ensuring that waste organic material is disposed of in a way that will create a nutrient rich base and help new plants to grow.

We'll have over 700 metres of hugelkulture beds planted with 22 varieties of native plants including flax, kahikatea, rimu, rewarewa and kowhai.



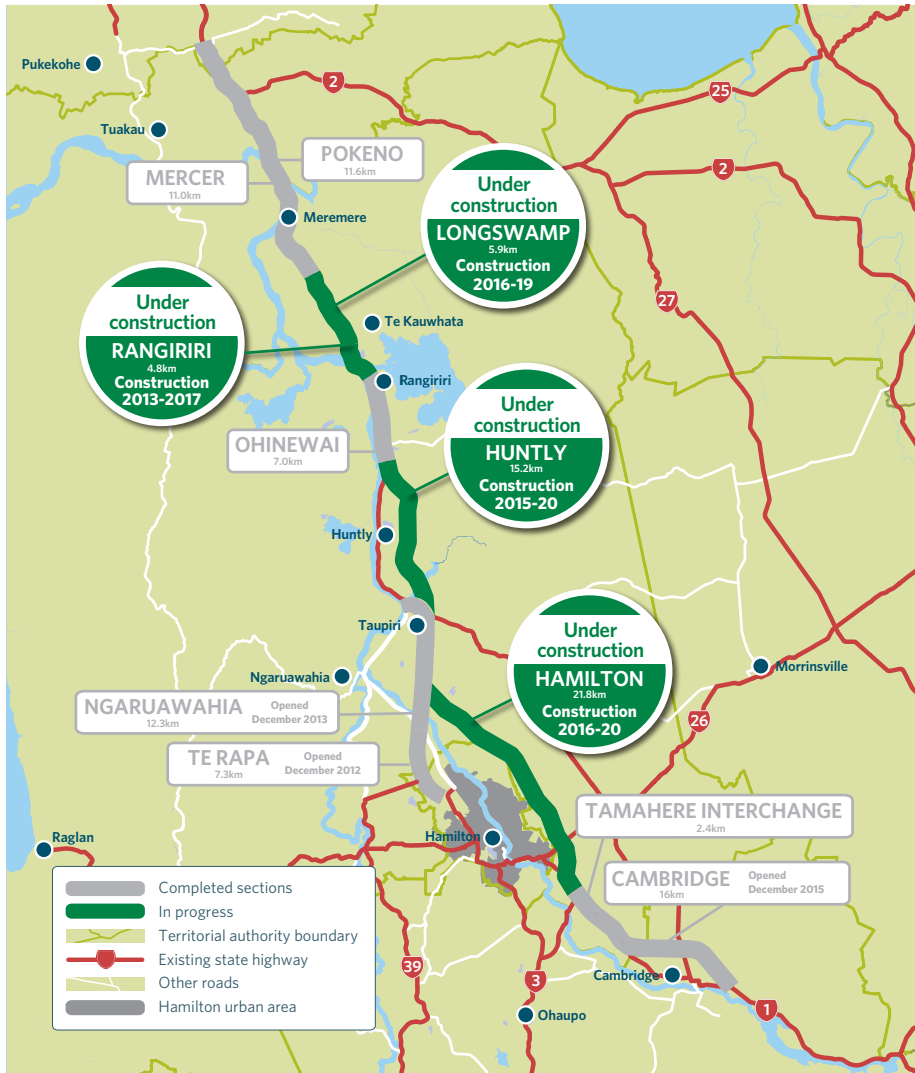
Hugelkultur beds at Huntly prior to planting

HUNTLY SECTION Did you know?

- 20 lizards were captured and 24 lizards were relocated as some lizards had babies
- About 1000 eels, as well as inanga, banded kokopu, koura and cran's bully have been fished from the swamps and streams and relocated to nearby streams with the help of local iwi
- There are over 150 different items of machinery on site
- Over 800,000 man hours have been worked to date

Expressway overview

The Waikato Expressway is one of the Government's seven Roads of National Significance. It will improve safety and reliability, and reduce travel times and congestion on State Highway 1 by delivering a four-lane highway from the Bombay Hills to south of Cambridge. The Expressway is being built in seven sections.



Did you know?

- The Huntly project, now in its second year, will be completed in 2020
- More than 150 different machines will be involved with earth moving this summer, aiming to move 2 million m³
- The Taupiri Pass has 1 million m³ of material to shift and the cutting will be 57m deep
- Nine bridges to be constructed; four local road bridges, four over streams, and one over the railway line

STAFF PROFILE

Stakeholder Liaison Manager

Trish Viall



I started with Fulton Hogan over eight years ago as a Stakeholder Manager. My first project was in Taupo working on the East Taupo Arterial for two years, then over four years in Papamoa whilst on the Tauranga Eastern Link project. We then moved (my husband also works on the projects) to Hamilton to work on the Huntly section.

I came from a sales and marketing background having worked for a NZ book publisher for 10 years prior, but I quickly gained construction experience in the intense atmosphere of project work.

My role is to be the intermediary between the project, key stakeholders, landowners and the wider public. I notify directly affected neighbours of any upcoming construction activities, answer any queries they may have as well as handle any compliments and complaints the project may receive.

I enjoy my job as a Stakeholder Manager as there is never a dull moment. My days are spent either in the office, out meeting with landowners, or driving through site among 100 tonne dump trucks.



Any questions?

Project site office
199 McVie Road



Freephone
0800 HUN INFO (486 463)

Trish Viall

Fulton Hogan HEB Joint Venture
Stakeholder liaison manager
Phone 07 828 0137
Mobile 027 548 7474

Simon Brandon

NZ Transport Agency
Communication and stakeholder liaison manager
Phone 07 958 7888
Email simon.brandton@nzta.govt.nz